

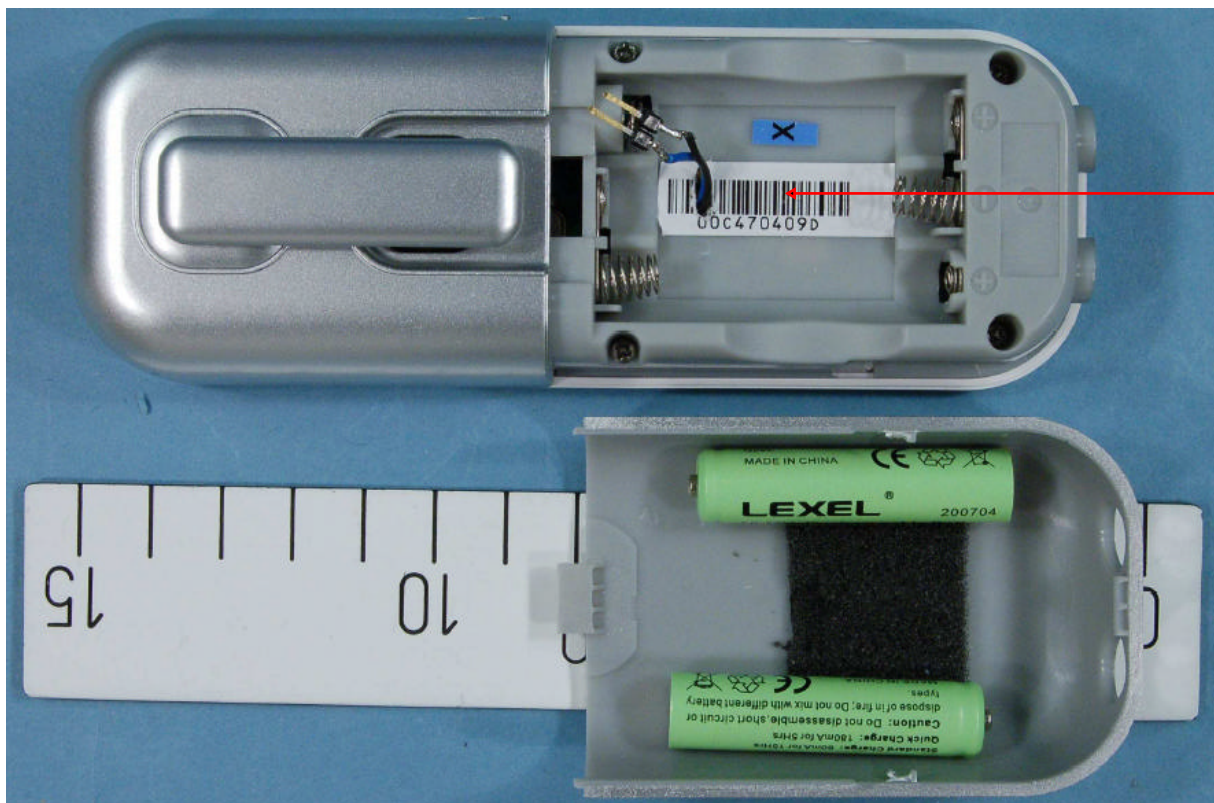
Label placement for DECT 6.0 Cordless Handset.

Handset label for model: A90-WMTAV3030-01

Country of origin: China



The label is to be placed on the handset in the battery compartment under the batteries.
(See picture below)



The handset will be sold without the batteries installed in the battery compartment.

Remark:

- AA - current year
(eg. "07" for year 2007)
- CC - current month
(eg. "06" for June)
- DDDDDD - progressive number
流水號
- RS,XX,YY - fixed letters 固定字母

H/S + CHARGER: A99-WMTAV3030-01
 HANDSET: A90-WMTAV3030-01
 S/N No : AARSCDDDDDD
 FCC ID : T7HWMTAV30-01
 IC : 4979B-WMTAV3001

CAUTION
 RISK OF DAMAGE TO
 THE PHONE MAY
 OCCUR IF BATTERY
 IS REPLACED BY AN
 INCORRECT TYPE.
 DISPOSE OF USED
 BATTERY PROPERLY.
 FOR BATTERIES SEE USER INSTRUCTION

ETL I.T.E.
 LISTED CM US
3126550
HAC

IPEI barcode

ASSEMBLED IN CHINA

H/S + CHARGER: A99-WMTAV3030-01
 HANDSET: A90-WMTAV3030-01
 S/N No : AARSCDDDDDD
 FCC ID : T7HWMTAV30-01
 IC : 4979B-WMTAV3001

CAUTION
 RISK OF DAMAGE TO
 THE PHONE MAY
 OCCUR IF BATTERY
 IS REPLACED BY AN
 INCORRECT TYPE.
 DISPOSE OF USED
 BATTERY PROPERLY.
 FOR BATTERIES SEE USER INSTRUCTION

ETL I.T.E.
 LISTED CM US
3126550
HAC

IPEI barcode

ASSEMBLED IN CHINA

P0611005-CT7381-HS-US-LB01
 SIZE:26 (W) x32 (H) mm
 COLOR:Black text on silver background
 BARCODE FORMAT:CODE 128 TABLE B FORMAT

2:1

IMPORTANT! Above information shows relative size and boldness only.
 Adjustment may be required at time of production by factories due to incline surface.

RTX consumer products Hong Kong Limited	
H/S Label (US)	
P0611005B-CT7381-HS-US-LB01	
	10-08-2007