

110d



The crossed-out wheeled bin symbol that can be found on your product means that the product is covered by the European Directive 2002/96/EC and it indicates that this product should not be disposed of via the normal household waste stream.

To prevent possible harm to the environment or human health, please separate this product from other waste streams to ensure that it can be recycled in an environmentally sound manner.

For more details on available collection facilities, please contact your local govern office or the retailer where you purchased this product.

Important Safety Instructions / Importantes Mesures De Sécurité

When using your telephone equipment, basic safety precautions should always be followed to reduce the risk of fire, electric shock and injury to persons, including the following:

1. Do not use this product near water, for example, near a bath tub, wash bowl, kitchen sink or laundry tub, in a wet basement or near a swimming pool.
2. Avoid using a telephone (other than a cordless type) during an electrical storm. There may be a remote risk of electric shock from lightning.
3. Do not use the telephone to report a gas leak in the vicinity of the leak.
4. Use only the power cord and batteries indicated in this manual. Do not dispose of batteries in a fire. They may explode. Check with local codes for possible special disposal instructions.

Certaines mesures de sécurité doivent être prises pendant l'utilisation de matériel téléphonique afin de réduire les risques d'incendie, de choc électrique et de blessures. En voici quelquesunes:

1. Ne pas utiliser l'appareil près de l'eau, p.ex., près d'une baignoire, d'un lavabo, d'un évier de cuisine, d'un bac à laver, dans un sous-sol humide ou près d'une piscine.
2. Éviter d'utiliser le téléphone (sauf s'il s'agit d'un appareil sans fil) pendant un orage électrique. Ceci peut présenter un risque de choc électrique causé par la foudre.
3. Ne pas utiliser l'appareil téléphonique pour signaler une fuite de gaz s'il est situé près de la fuite.
4. Utiliser seulement le cordon d'alimentation et le type de piles indiqués dans ce manuel. Ne pas jeter les piles dans le feu: elles peuvent exploser. Se conformer aux règlements pertinents quant à l'élimination des piles.

FCC Rules

This device complies with Part 15 of the FCC Rules. Operation is subject to the following two conditions: (1) this device may not cause harmful interference, and (2) this device must accept any interference received, including interference that may cause undesired operation.

Changes or modifications to the equipment not expressly approved by the party responsible for compliance could void the user's authority to operate the equipment.

NOTE: This equipment has been tested and found to comply with the limits for a Class B digital device, pursuant to Part 15 of the FCC Rules. These limits are designed to provide reasonable protection against harmful interference in a residential installation. This equipment generates, uses and can radiate radio frequency energy and, if not installed and used in accordance with the instructions, may cause harmful interference to radio communications. However, there is no guarantee that interference will not occur in a particular installation.

If this equipment does cause harmful interference to radio or television reception, which can be determined by turning the equipment off and on, the user is encouraged to try to correct the interference by one or more of the following measures:

- Reorient or relocate the receiving antenna.
- Increase the separation between the equipment and receiver.
- Connect the equipment into an outlet on a circuit different from that to which the receiver is connected.
- Consult the dealer or an experienced radio/TV technician for help.

This product has been shown to be capable of compliance for localized specific absorption rate (SAR) for uncontrolled environment/general population exposure limits specified in ANSI/IEEE Std. C95.1-1992 and had been tested in accordance with the measurement procedures specified in FCC/OET Bulletin 65 Supplement C (2001) and IEEE 1528-2003"

For body worn operation, this handset has also been tested and meets the FCC RF exposure guideline. Use of other accessories may not ensure compliance with FCC RF exposure guidelines.

This Class B digital apparatus complies with Canadian ICES-003

Cet appareil numérique de la classe B est conforme à la norme NMB-003 du Canada.
Le présent matériel est conforme aux spécifications techniques applicables d'Industrie Canada

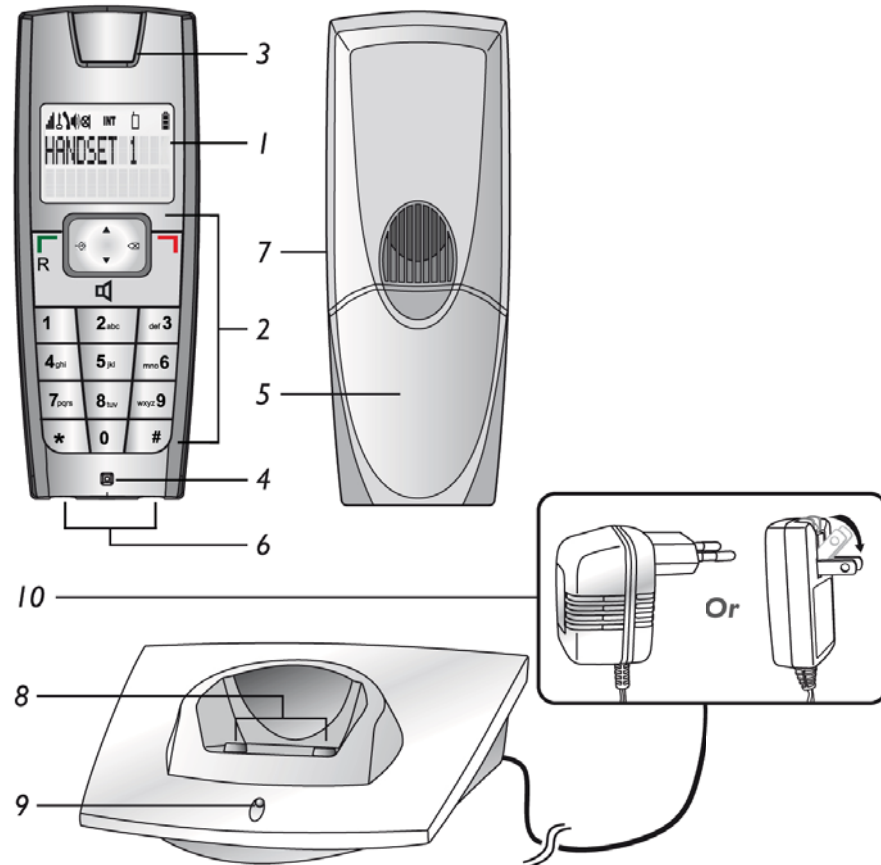
Privacy of communications may not be ensured when using this phone.

Handset

1. LCD screen
2. Function keys
3. Ear piece/Receiver
4. Mouth piece/Microphone
5. Battery compartment cover
6. Handset charge contacts
7. Headset jack (optional)

Charger Unit

8. Charger charge contacts
9. Power indicator
10. Power supply unit



Accessories & Content

Following items are included in the package of this Designer's Phone: –

- Handset unit
(additional handsets may be included according to product package)
- Charger unit
- Rechargeable AAA size NiMH batteries (1.2V 600mAh x 3 pieces)
- Power supply unit
- Instruction for user

Instruction for User

Congratulation on your purchase of this DESIGNER'S PHONE. This phone is designed with finishing touch by renowned Danish designer. It is a state of the art device created with consideration of form and function.

This designer's phone is powered with latest digital technology — DECT system (Digitally Enhanced Cordless Telecommunication). It brings you digital sound, penetrating range and user-friendly menu-driven functions.

According to the DECT system standard (GAP compatible), 6 different handsets (***sold separately***) can be registered to a single E-MTA cable modem unit to perform function of a mini-PABX system that offers you functions of intercom and call transfer between handsets and base unit.

In addition, its built-in caller ID decoder, re-dial, phone book, redial list and caller ID memory provide you great convenience to manage your phone calls.

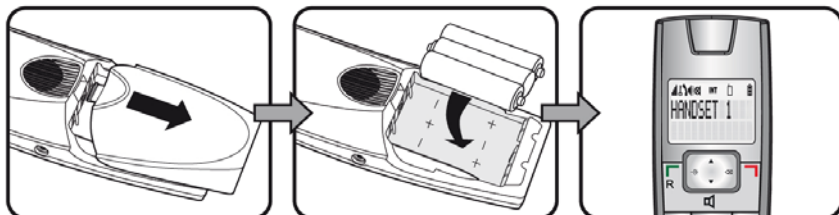
This Instruction for Users briefly describes the installation procedures and all built-in features at a glance.

Installation and Start-Up

The cordless phone system can only work under constant power supply to the E-MTA base station. It is advisable that another corded phone (works without main power supply) is connected to your phone system for emergency call purpose in case of power failure.

1. On the charger unit, connect the power supply unit to the power supply at the wall.

- On the handset, gently slide & open the battery cover and insert the rechargeable batteries come with the package. Make sure batteries following the polarity indication marked inside battery compartment. LCD screen will turn up as soon as battery connection is through.



IMPORTANT NOTICE :

This DECT phone has to be registered to the E-MTA cable modem.
Please read carefully the "READ ME FIRST" before you start the following installation.

- Put the handset onto the charger unit, according to picture shown, make sure charge indicator on the handset unit animates to show charging in progress.



IMPORTANT NOTICE : To obtain best battery performance, keep the handset being charged for 12 hours after first time installation.

Replacement of Batteries

Depending on your usage, it is recommended to change rechargeable batteries every year to achieve best performance.

Display & their Indication

In standby/idle mode:-



Symbol	Indication
	A "RSSI" symbol received signal strength from the E-MTA cable modem. If the handset is out of range, the display will show SEARCHING
	This will show when keypad lock is activated
	This will show when the line is engaged
	This will show when handset speakerphone mode is activated
	This will show when handset microphone is muted
INT	This will show when the phone is in intercom conversation mode
	This will show when the phone is in walkie-talkie mode
	It shows the battery capacity. During charging, it will show animated icon.
HANDSET 1	The handset is in standby mode. During standby mode, the given handset name will be displayed.

Handset Unit

Before going through the following keypad functions, it is a good idea to understand multiple functions may be assigned to a single button in order to reduce buttons cluster.

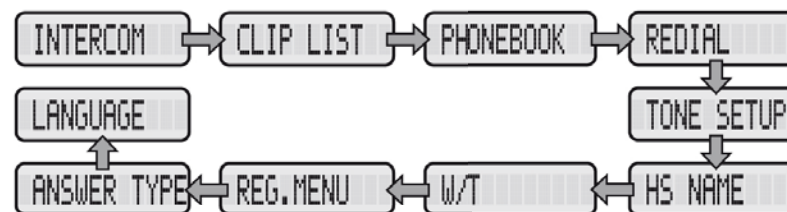
Button	In Standby	In Conversation	In Programming/Viewing Mode
	Push this button to answer an incoming call or to make a call. Long push this button to turn on the handset.	This button functions as Flash to switch between 2 lines	When reviewing phone book, redial list or caller ID records, push this button to start dialing.
	Long push this button to turn off the handset.	Push this button to end an call	To return standby mode
0 – 9	To enter digit 0-9	To send DTMF signal 0-9	To enter digit 0-9
	Push this button to enter Call log	To adjust receiver volume during conversation	To scroll through menu selections
	Push this button to review phonebook memories	To adjust receiver volume during conversation	To scroll through menu selections
	Push this button to enter menu mode. Long push this button and followed by handset number of the desired calling handset to make internal call to another handset (if more than 1 handset is connected)	Press this button followed by an internal handset number to perform call transfer. (If more than 1 handset is connected)	To confirm an action or selection
	Push this button to enter redial list. Long push this button to activate speakerphone mode	Push this button to activate or deactivate speakerphone mode	Push this button to switch the upper/lower case alphatet input in phone book node.
	No function	Mute	In programming mode, push this button to go back to previous menu or to cancel an action
#	Press and hold this button to insert pause	To enter DTMF #	Push and hold this button to insert a timed pause in phonebook records

Preparation Before Use

The Menu Button

This DECT phone is built with a user-friendly MENU function. All essential functions of this phone can be programmed via the Menu button and Up/Down arrow button / by a question & answer (Q&A) approach.

By pushing the / button on the handset, it leads you to browse through the following function menus in a circular manner. You may push to browse upward and to browse downward.



With the combination of Up/Down /, , delete buttons, you can set your phone up with great ease.

Throughout the remaining part of this Instruction, for Users, a quick Key Map will lead you to different programming areas where you will be asked to make your selections.

For example:

Key Map showing the key sequence for setting language area : –

Key Map:-



Above Key Map shows you the following steps:-

1. On the handset, push and release button.
2. Use / buttons to scroll until is shown on the screen.
3. Push to confirm.

Setting Language

Usually, English is factory-programmed display language. To change the language setting:-

Key Map:-



1. Use the / button to browse through available languages.
2. When desired language is shown, push button to confirm. A beep sound will be heard as confirmation.

Normal Operation

To Make & Receive Calls

To make a new call –

1. Make sure the symbol on the handset screen is steady and this indicates good connection to the base unit. If the display show **SEARCHING**, it indicates the handset is too far away from the base unit.
2. You may enter the telephone number to be called before or after pushing button. Entered number will be dialed automatically.

To receive a call –

1. If you have subscribed to caller ID service with your telephone operator, caller's number will show on the screen while the handset is ringing.
2. Simply push the button if you decide to answer the call.

To end a call, push button on the handset.

To Make & Receive Internal Calls (Intercom)

In a standard package, your phone comes with one handset only. Depending on the package you have purchased (please consult product packaging), separate handset may be included for extended usage.

Internal communication (INTERCOM) can be made between handsets - like intercom, call transfer & conference conversation.

Each handset is given an individual extension number. This individual extension number will be used when making intercom, call transfer & conference conversation.

To make an internal call to another handset

You may make intercom to another handset registered to the same E-MTA cable modem.

Long push button and entered desired handset number to send a ring to the desired handset. When the intercom is answered by the designated handset, intercom conversation can be started.

To answer an intercom ring, simply push button on the called extension unit.

Call Transfer

External call can be transferred from one handset to another handset.

1. During a conversation with external party.
2. Follow the instruction listed in above INTERCOM section to start an internal call, external call will be put on hold until intercom has been established.
3. Wait till the designated internal handset answers the INTERCOM.
4. When the INTERCOM is answered, push button on the calling handset to transfer the external call.

NOTE : If INTERCOM was not answered by designated handset, external call can be retrieved by pushing button on the calling handset.

Keypad Lock

During standby mode, you can lock the keypad by the following procedures.

1. Push button
2. Push button
3. then, the icon and **KEYS LOCKED** will display on the screen.
4. To unlock the keypad again, please repeat above procedure.

Phone Book

There are 40 phone book memory banks built inside this DECT phone (12 characters and 24 digits). You may store frequently used number into these memory banks.

If more than one handset comes with your product package (refer to information on package), phone book memories are independent among handsets. Phone book memory will not be automatically transferred from one handset to the others.

To Make a New Entry

Key Map:-



Or, you can directly enter the phonebook by pushing button.

1. The display will show **EDIT NUMBER**.
2. Use the alphanumeric buttons (0 to 9) to enter a number. Push to save the record.
3. The display will show **EDIT NAME**.
4. Use the alphanumeric buttons (2-9) to enter a name in the same manner as you manage alphabet input from your mobile phone. Use the button (0) to enter a space. Push switch between upper and lower case. Push button to confirm.
5. A beep sound will be heard as confirmation.

To Make a New Entry from Caller ID Memory

You may copy a number stored in Caller ID memory to phone book. (Consult sections of **Caller ID** for more details.)

1. You view the Call log to get your desired number.
2. Push button. The display will show **COPY TO PHB**.
3. Push button to confirm.
4. The display will show the number and ask you if you need to edit the number. If no editing, please push button to confirm.
5. The display will show **EDIT NAME**.
6. Enter your name and push button to confirm.

To Make a Call from Phone Book Memory

1. Push button to view the phonebook memories.
Push button to find the desired entry.
2. Push button to make the call.

To Delete Phone Book Memory

1. Push button to enter phonebook memory.
2. Find your desired entry.
3. Push button.
4. Push button to select **DELETE** or **DELETE ALL**.
5. Push button to confirm.

The entry is deleted!

To Change Phone Book Memory

1. Push button to enter phonebook memory.
2. Find your desired entry.
3. Push button.
4. Push button to select **EDIT**.
5. Push button to confirm.
6. You can now edit your entry.

Caller Line Identification Presentation (CLIP) Memory (Caller ID)

If caller ID service is available from your service operator and you have subscribed to this service, telephone number of the caller will be shown on the screens of handset when there is an incoming call. If the number is stored in the phone book, the name will be displayed.

NOTE:

- This DECT phone stores last 10 caller ID records into caller ID memory. Oldest record will be replaced by newest record.
- For unread Caller ID records, there will be mark “*” shown on the record.

To Review Caller ID Records

1. Push button to enter Call log.
2. Push button to scroll among records.
3. The Caller ID memory also tells the date/time of the call.

To Make Call from Caller ID Records

You may make a call from the caller ID records. Simply push button on the handset when the desired caller's number is shown when reviewing caller ID records.

To Delete Caller ID Records

You can delete all the Caller ID record in your phone by the following procedure:-

Key Map:-

→ browse the Caller ID record → → select **DELETE ALL** → →

Personalizing Your Phone

This DECT phone is built with features to offer you personalized settings, such as ringing melody, ringing volume and key click.

Setting Ring Volume & Melody

Different ringing melody and volume can be programmed to each handset.

To set external ring melody: –

Key Map:-

→ **TONE SETUP** → → **RING MELODY** → → scroll to your desired ring melody

To set internal ring melody: –

Key Map:-

→ **TONE SETUP** → → **INT MELODY** → → scroll to your desired ring melody

To set ring volume: –

Key Map:-

→ **TONE SETUP** → → **RING VOLUME** → → scroll to your desired ring volume

Setting Key Beep

When Key Beep turned on, a beep is heard when you push on any button. You may also select to turn key beep off.

Key Map:-

→ **TONE SETUP** → → **KEY TONE** → → select ON/OFF → →

Naming Your Handset

You may name your handset up to your preference.

Key Map:-

→ **HS NAME** → → enter your desired name → →

Enter the name up to 12 characters.

Walkie-Talkie (N/A in US version)

If you have more than one handset, you can use the DECT phone as walkie-talkie. You can use this function when you will be out of range from the cable modem. During walkie-talkie mode, the handset cannot receive incoming calls and cannot make out-going calls.

Please refer to below operation to apply on the two handsets you want to bring them to walkie-talkie mode

Key Map:-



1. The display will show **GROUP: _____**.
2. Enter any 4-digits number and both handsets must enter with the same number.
3. The display will show **HS NUMBER: _____**.
4. Define the handset number of the handset which already in the walkie-talkie mode.
5. Now the two handsets are now in walkie-talkie mode.
6. Push button following by the receiver handset number designated in procedure (4) to start a call.
7. Push button to end a call.

To disable walkie-talkie mode: –

Key Map:-



Answer Type

This phone offers 2 answer type modes for the user to select.

Any Key: During “Any Key” mode, you can answer the incoming call by pushing any buttons.

Normal: During “Normal” mode, you can answer the incoming call by only pushing button.

You can change the answer type by the following procedure:-

Key Map:-



Maintenance

1. Do not expose this product to dust, strong sunlight, humidity, high temperature or mechanical shock.
2. Do not use corrosive or abrasive cleansers on this product. Keep the unit dust free by wiping it with a soft, dry cloth.
3. Do not disassemble this product, it contains no user-serviceable parts.
4. In case of a thunderstorm, it is advised to disconnect the power adaptor, as product warranty does not cover damage caused by lightning/serge.
5. Only use adaptor and battery pack come with the package.
6. Use only supplied charging cradle for recharging the handset batteries.

Trouble Shooting

Q1. My phone does not work!

- A1. Make sure connection of adaptor cord are connected securely to the jack.
 A1. Make sure you have inserted batteries into the handset battery compartment, and they are charged with good capacity and inserted with correct polarity.
 A1. If you have connected more than one phone to the same cable modem, make sure all other telephones connected are put on hook. In some telephone systems, when the first phone on the same telephone line is used, all other telephones are electrically disconnected.
 A1. Try to connect another telephone to the telephone socket, if the problem persists, it appears that there is a problem with your telephone line system, consult your network provider.
 A1. If the person of the other end of the conversation does not hear your voice, make sure you have not activated the MUTE function. To test, activate the MUTE function once more and your phone should resume to normal operation.
 A1. Check if the antenna symbol on the screen is shown. If it is not, it indicates your handset is too far away from the base unit and radio signal is too weak. You should get closer to the base unit and try again.
 A1. In some critical situation, if the handset is without normal battery charging for a prolonged period of time, it may lock itself when battery level becomes too low. Try to disconnect the batteries and put them back on again and put the handset on charger for 12 hours to resume.

Q2. My phone does not ring!

- A2. Check if the phone is set to Silence mode.
 A2. Make sure your handset is not switched off.

Q3. The phone book memories do not work as expected!

- A3. Make sure you do not enter telephone number longer than limits mentioned in the phone book section.

Q4. Caller's number does not show on my phone!

- A4. Make sure your phone line is provided with caller ID function from the phone service provider. In most countries, caller ID function must be paid and subscribed separately from normal phone function. For details, please consult phone service provider.
 A4. Callers may suppress their caller's number when making their phone call. Caller's number does not necessary display when a call is received. For details, please consult phone service provider.
 A4. If a call is made from abroad, caller's number cannot be transmitted.
 A4. Check the **CLIP** format of your country. Details please refer to **CLIP FORMAT** section.

Q5. My handset does not work after I have registered my handset to a base unit from different maker!

- A5. According to DECT standard, handset (**GAP** compatible) can be registered to any DECT system base unit (**GAP** compatible). However, maker specific functions may not be compatible between products. It may happen that only basic function can be operated if handset and base unit from 2 makers are registered together.
 A5. Check if the other base unit is **GAP** compatible according to DECT standard. Only **GAP** compatible products can be compatible to each other.