

# Fluke TiS Family Functional Module

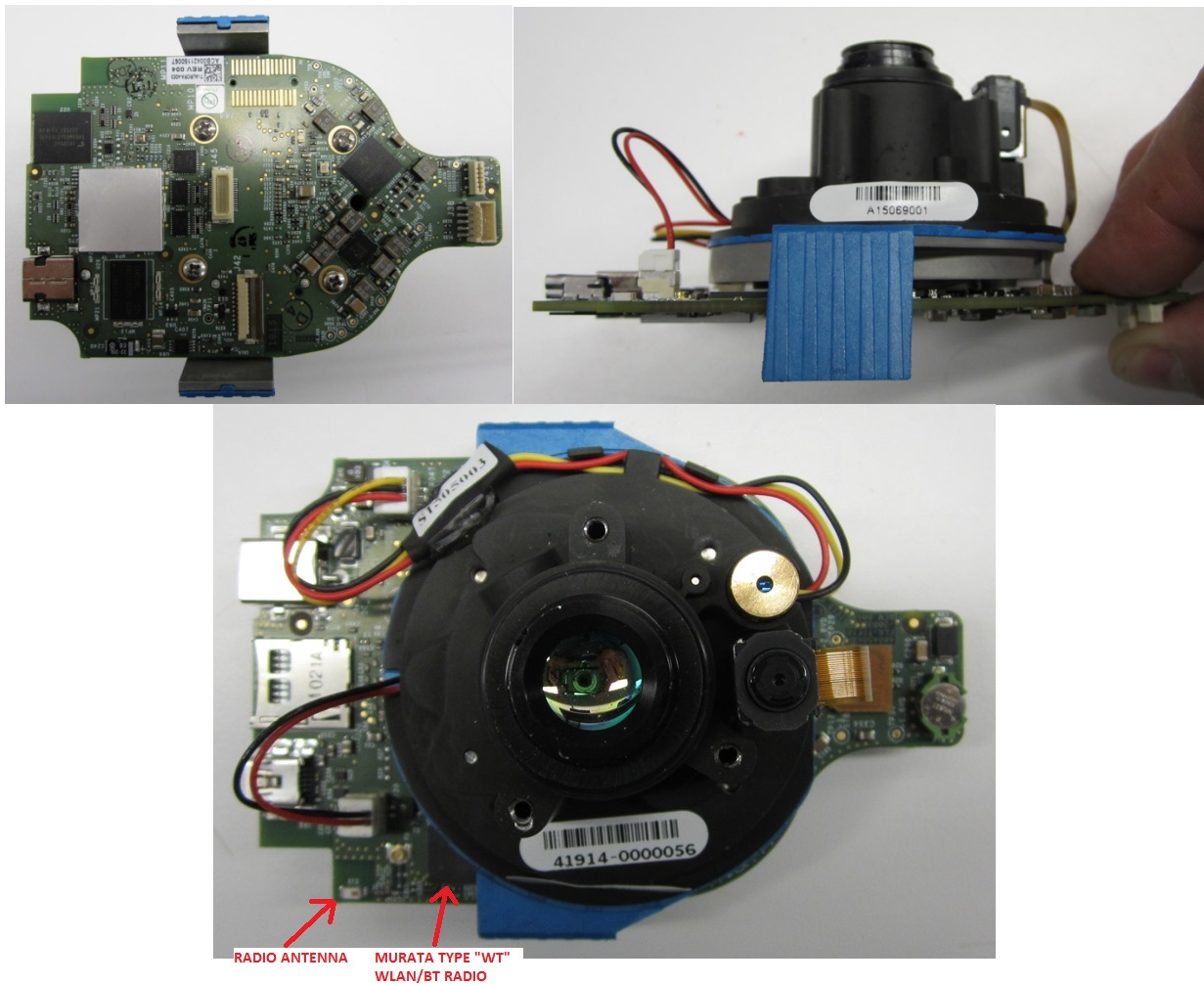
---

## Summary:

The following images illustrate the Aurora functional module. This module is identical across all models in the TiS series, including TiS10, TiS20, TiS40, TiS45, TiS50, TiS55, TiS60 and TiS65. Included in this module are the WiFi and Bluetooth radios, all processing elements, and all image capture elements. This is the minimum functional component required for the system firmware to function.

## Module Overview:

The following images show the functional module removed from the product case. The location of the radio electronics and antenna are labeled:



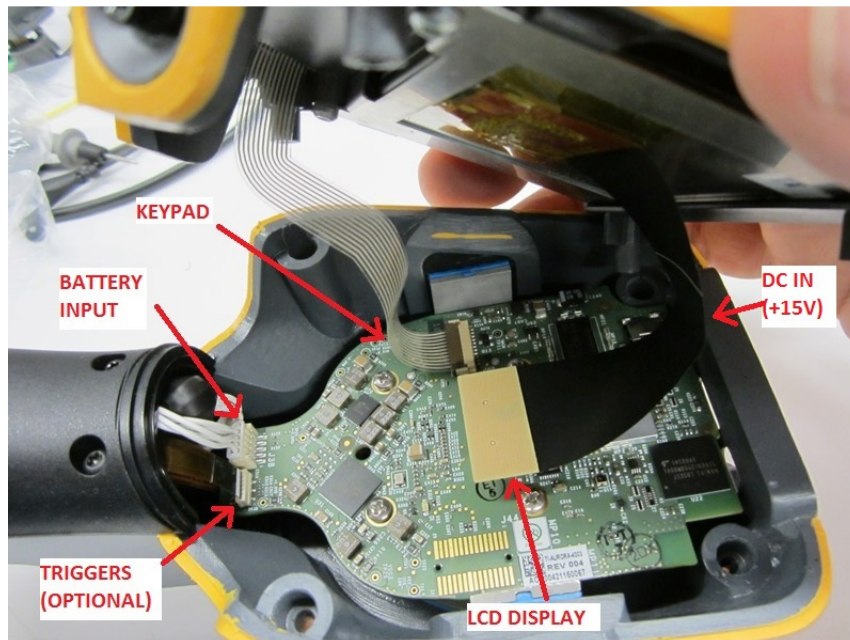
# Fluke TiS Family Functional Module

## Module Support for Compliance Testing

The functional module requires the following support hardware to enable functional testing:

- A power source, either from the battery input or the DC in barrel connector (+15VDC).
- A LCD display, to provide access to the GUI menu system.
- A keypad interface to provide operator input to the GUI.

The following pictures show the functional module with the required support hardware attached and labeled:



## Modifications to the functional module for conducted RF testing:

The following images show the modifications to the functional module for conducted RF testing. The feed to the on-board antenna is cut and replaced with a U.FL style connector. A U.FL/IPEX to SMA cable typically mounts to the case side:

