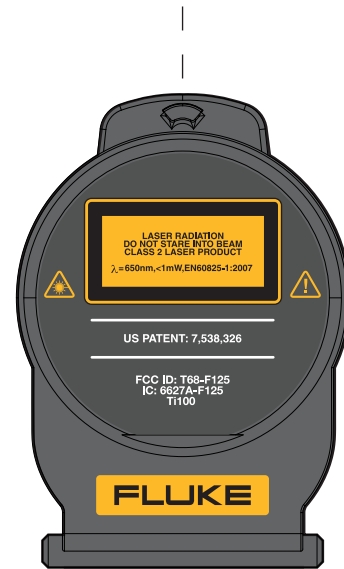


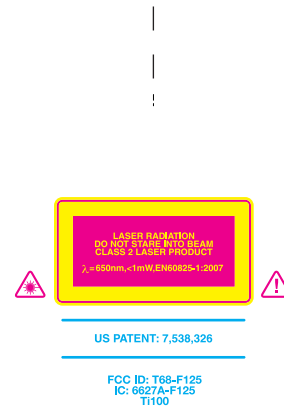
FOR REFERENCE

ARTWORK  
ROMULUS LASER DECAL

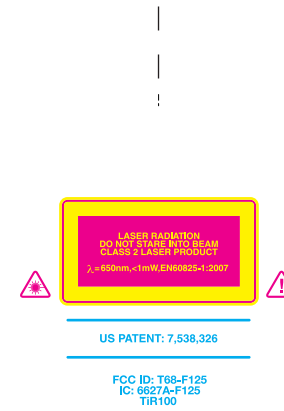
ARTWORK  
DUSTCAP FLUKE



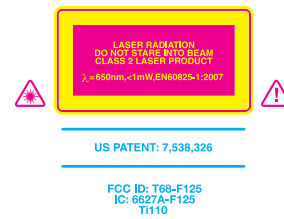
MODEL TI100



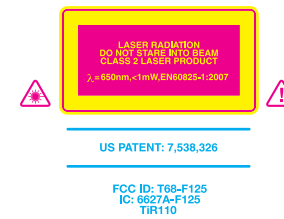
MODEL TIR100



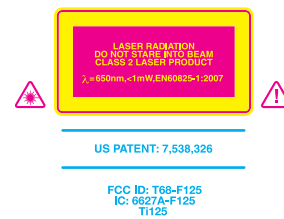
MODEL TI110



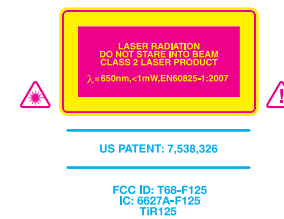
MODEL TIR110



MODEL TI125



MODEL TIR125



Fluke Yellow  
Munsell 9YR 7.36/14.6

Black, Low, Common, Ground, Text  
Munsell N 0.5/

White  
Munsell N9.5/

White  
Munsell N9.5/

Fluke Yellow  
Munsell 9YR 7.36/14.6

Black, Low, Common, Ground, Text  
Munsell N 0.5/

SPECS FOR DECAL

- SURFACE TEXTURE TO BE GE LEXAN FILM 8B35F VELVET/FINE MATTE FINISH OR EQUIVALENT.
- ALL GRAPHICS AND COLOR TO BE APPLIED ON BACK SIDE OF DECAL MATERIAL
- ALL GRAPHICS TO BE FLUKE GRAY 8 UNLESS OTHERWISE NOTED

Romulus Ti1xx Series Lens Cover Decal

**FLUKE**

Fluke Corporation  
P.O. Box 9090  
Everett, WA 98206-9090

DESIGNER  
APPLICATION

DWG. NO. REV05  
PART NO.

DATE 10/27/2011

SCALE

ID FILE lenscover\_back  
\_decal\_rev05.ai

PROPRIETARY NOTICE: This document and the technical data hereon disclosed, are proprietary to Fluke Corporation and shall not, without express written permission of Fluke Corporation, be used, released or disclosed in whole or in part, or used to solicit quotations from a competitive source or used for manufacture by anyone other than Fluke Corporation. The information hereon has been developed at private expense, and may only be used for purposes of engineering evaluation and for incorporation into technical specifications and other documents which specify procurement of products from Fluke Corporation.