

Internal Photos

Applicant: Johnson Outdoors

Model Name: Ulterra with iPilot Link

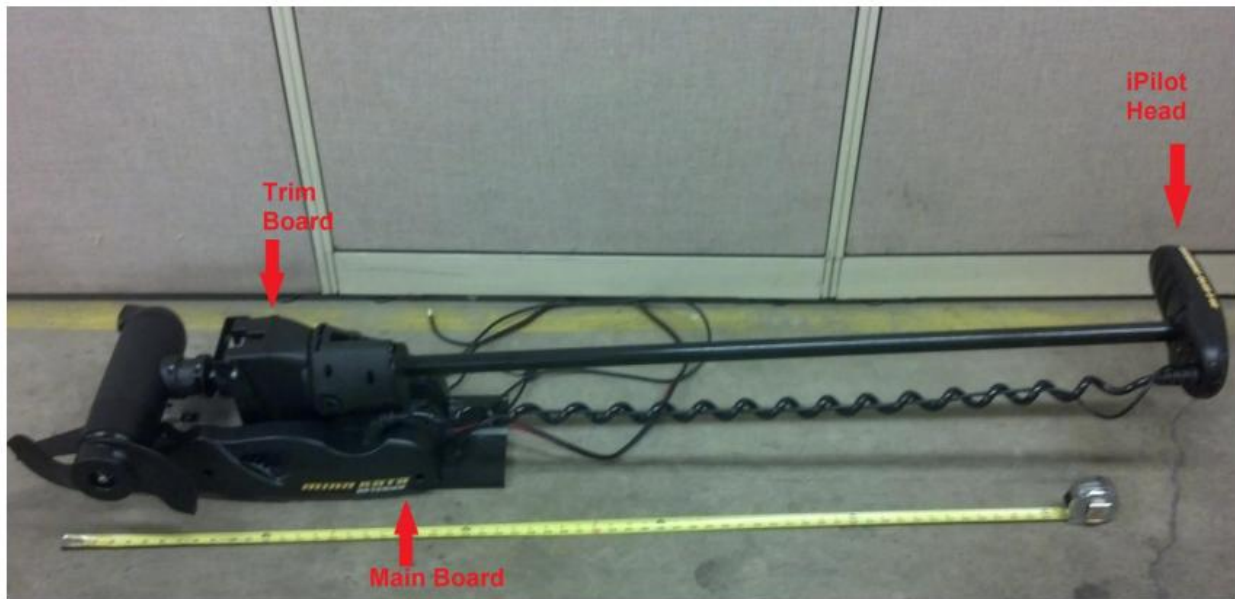


Figure 1 - Location of each circuit board assembly and radio

Internal Photos

Applicant: Johnson Outdoors

Model Name: Ulterra with iPilot Link



Figure 2 - Trim board in assembly

Internal Photos

Applicant: Johnson Outdoors

Model Name: Ulterra with iPilot Link

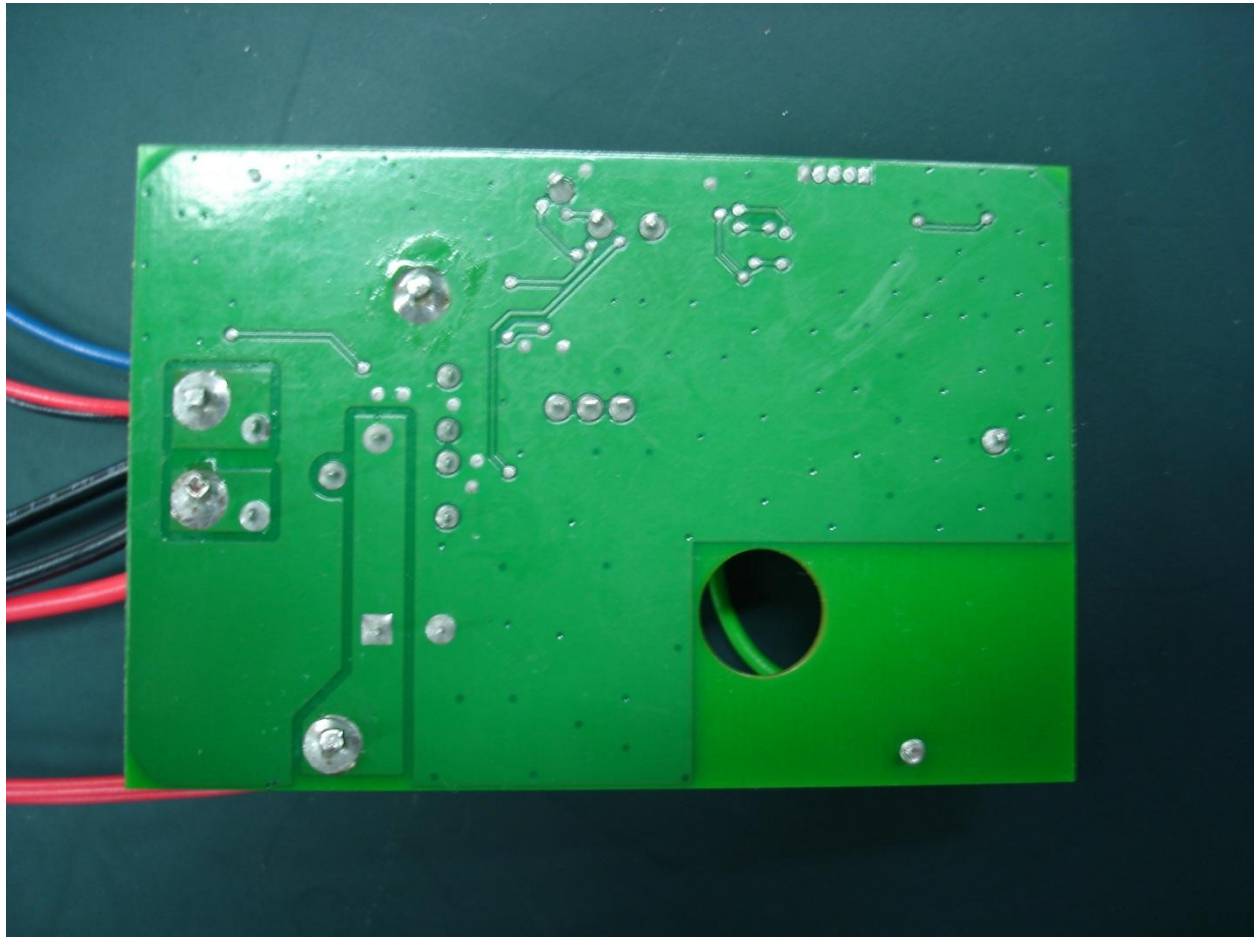


Figure 3 – Trim Board, Bottom

Internal Photos

Applicant: Johnson Outdoors

Model Name: Ulterra with iPilot Link

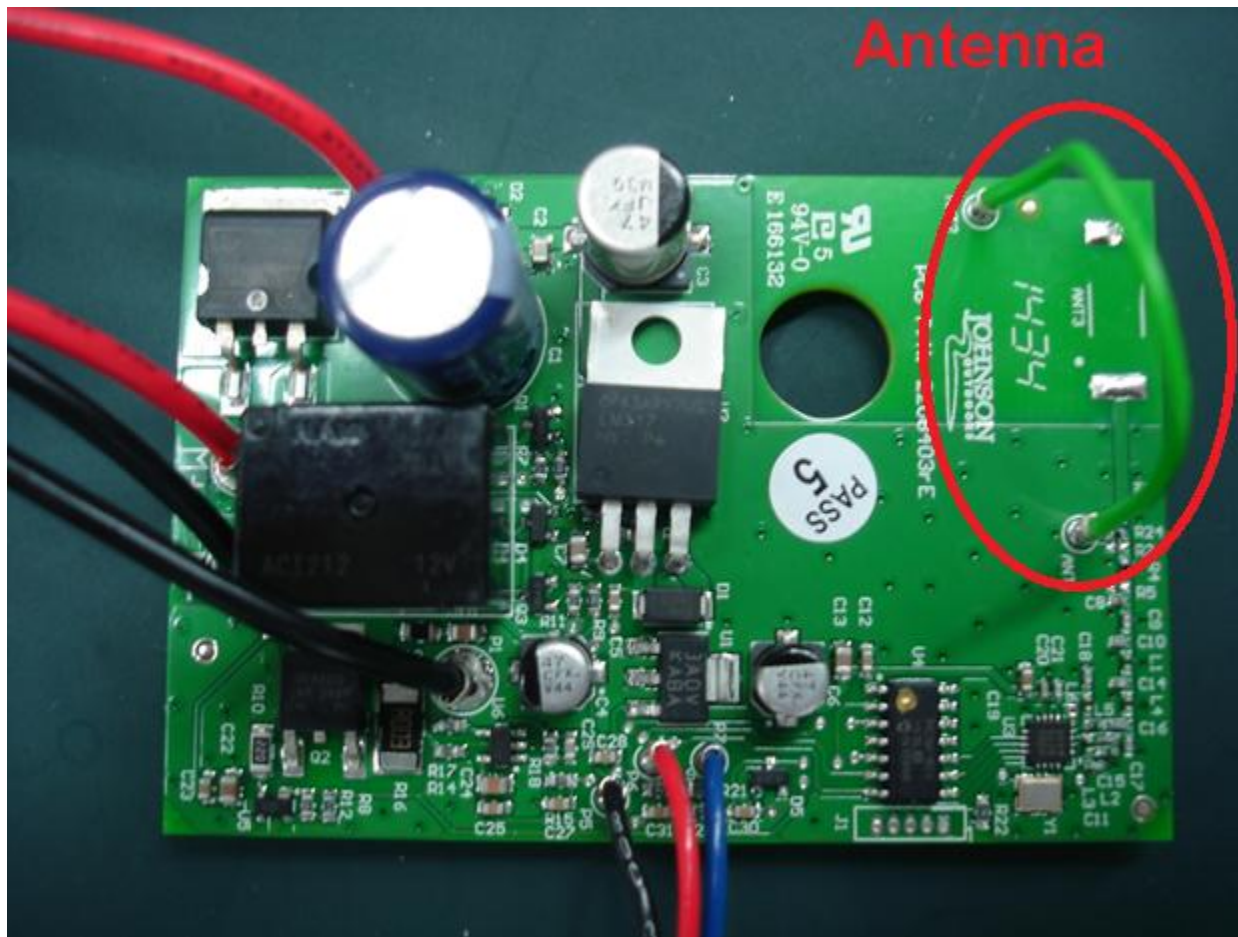


Figure 4 – Trim Board, Top

Internal Photos

Applicant: Johnson Outdoors

Model Name: Ultrerra with iPilot Link

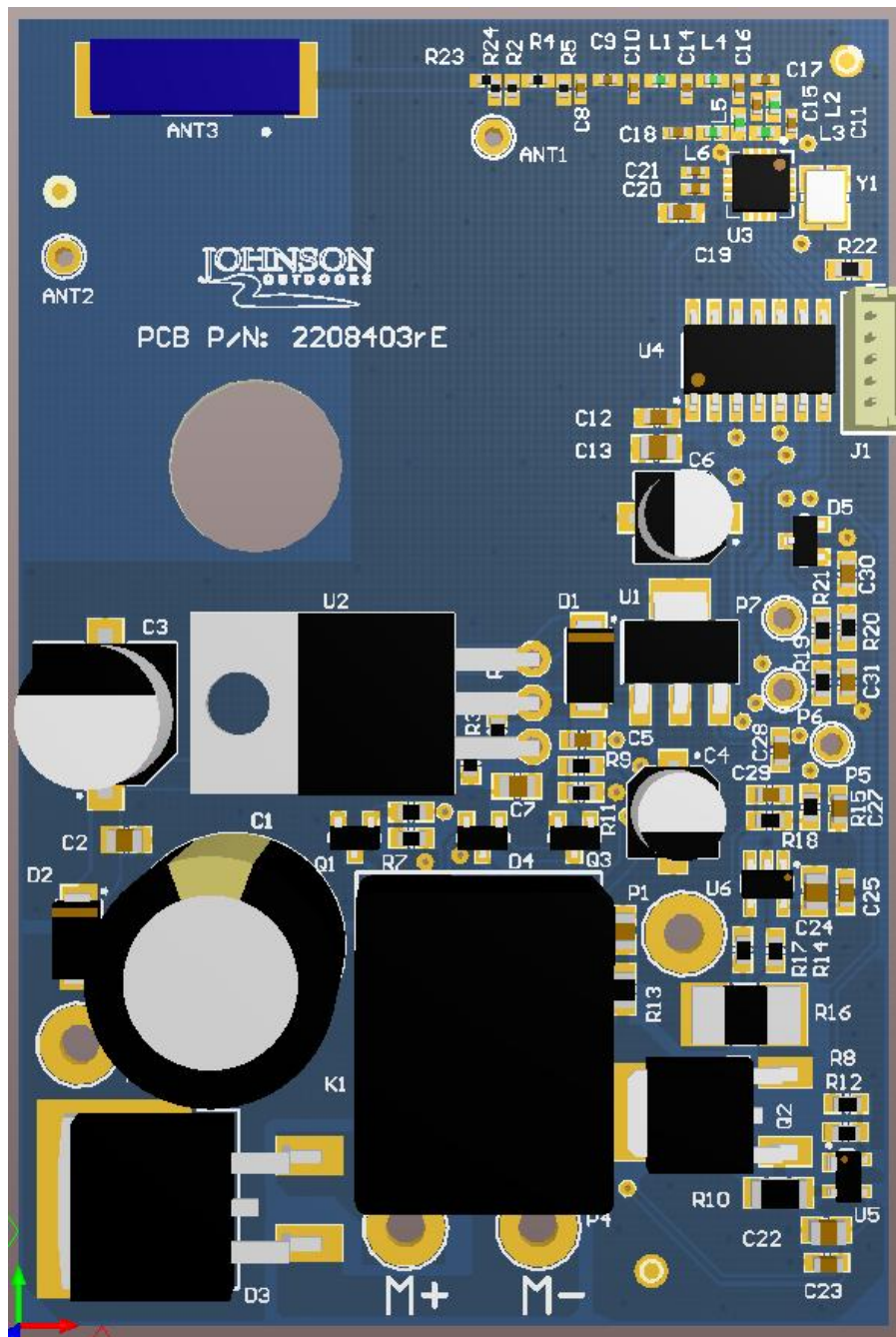


Figure 5 - Trim Board, Front

Internal Photos

Applicant: Johnson Outdoors

Model Name: Ulterra with iPilot Link

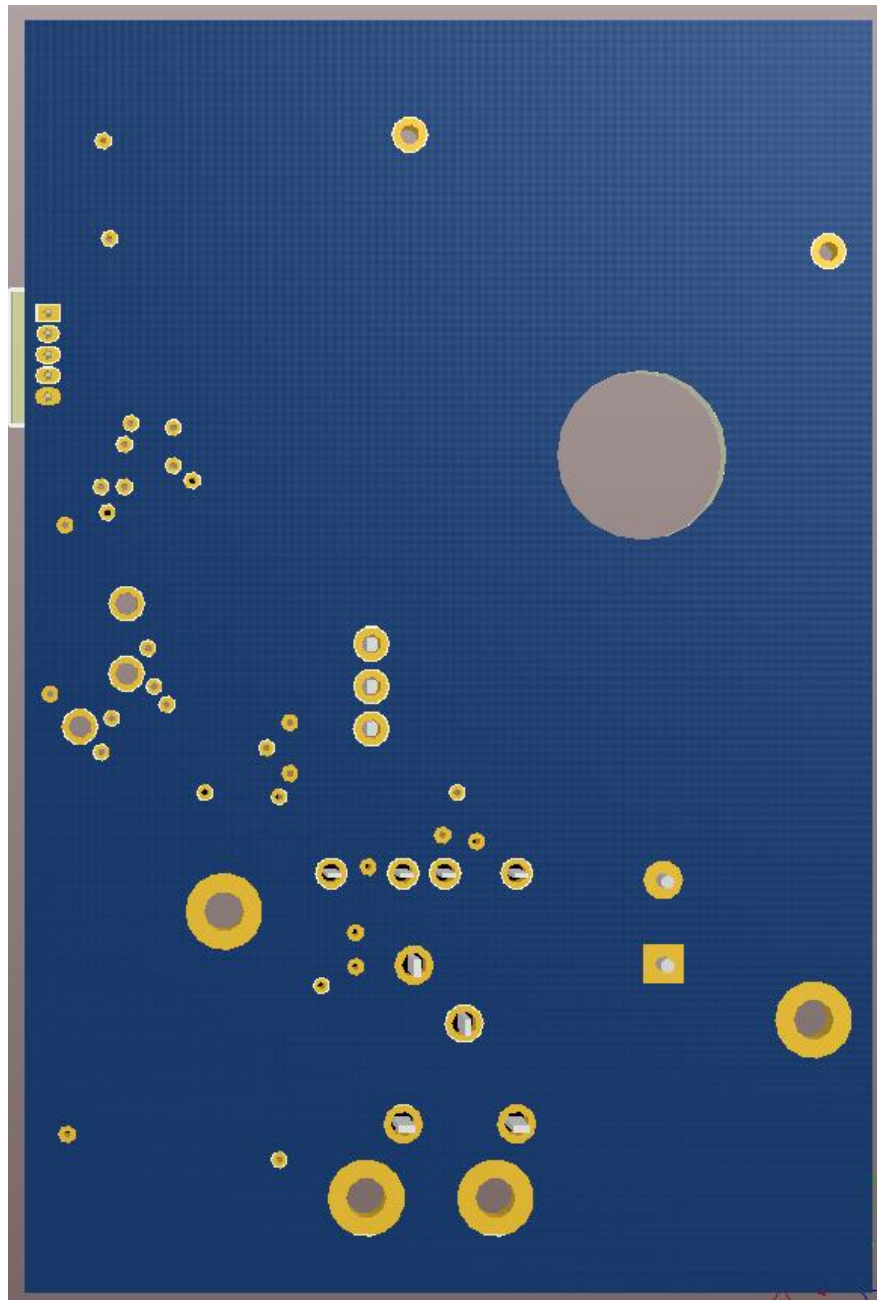


Figure 6 - Trim Board, Back

Internal Photos

Applicant: Johnson Outdoors

Model Name: Ulterra with iPilot Link

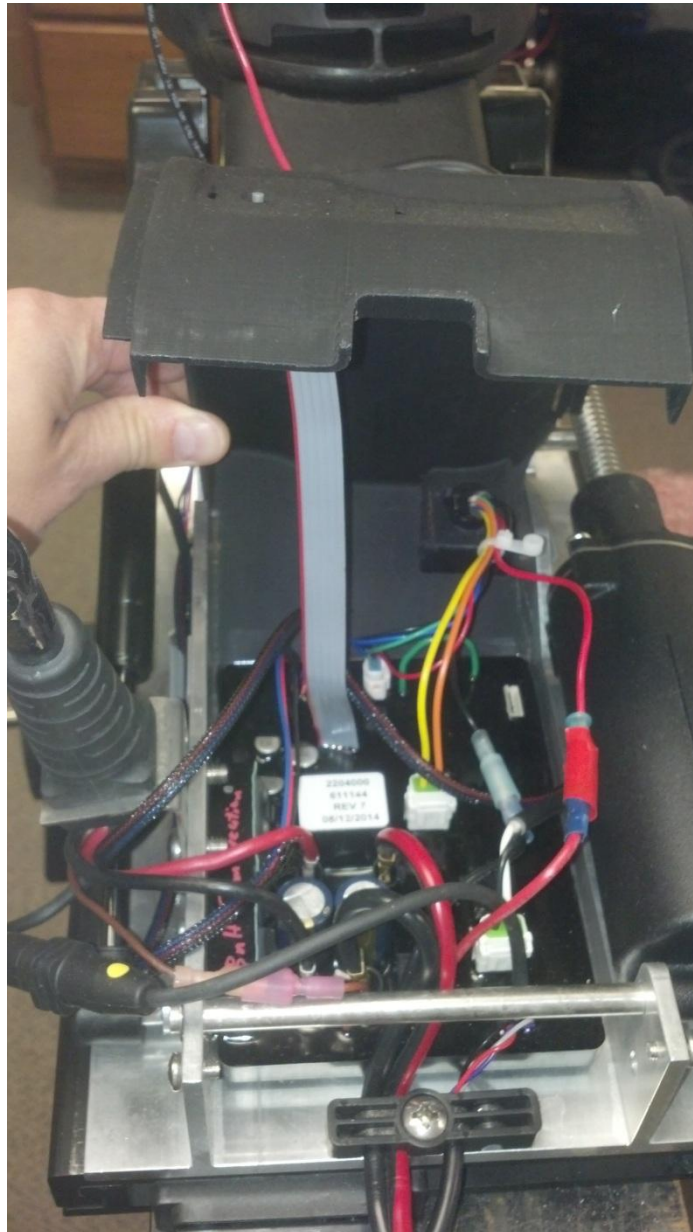


Figure 7 - Main board in assembly

Internal Photos

Applicant: Johnson Outdoors

Model Name: Ulterra with iPilot Link



Figure 8 - mains board, potting removed

Internal Photos

Applicant: Johnson Outdoors

Model Name: Ulterra with iPilot Link

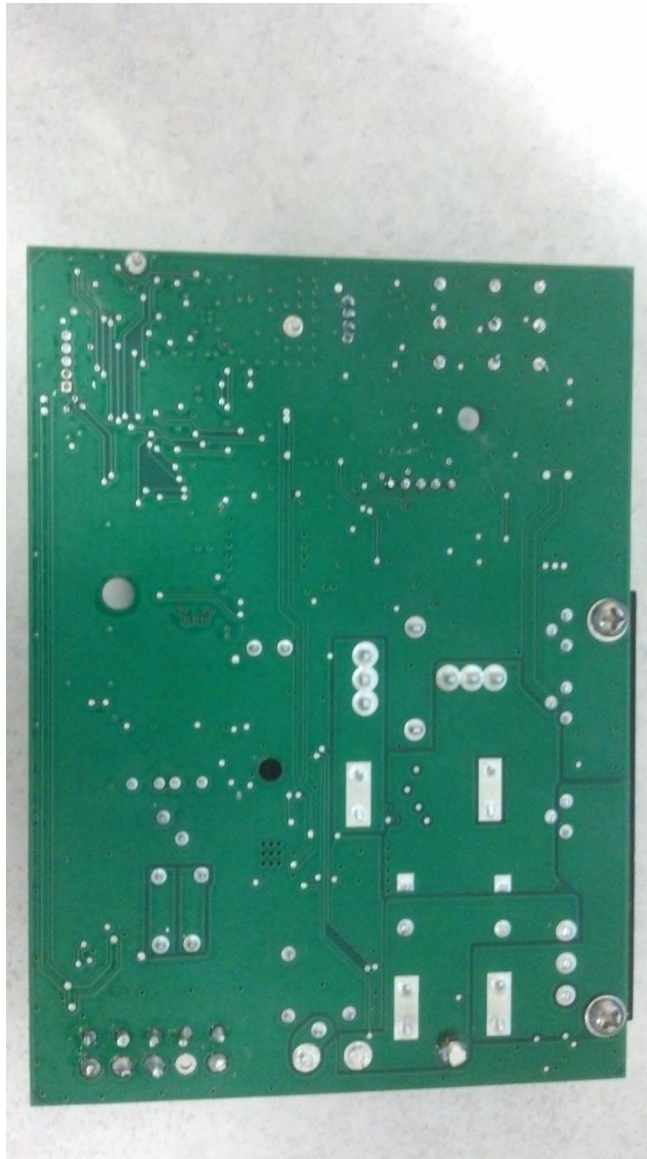


Figure 9 - Main Board Bottom

Internal Photos

Applicant: Johnson Outdoors

Model Name: Ulterra with iPilot Link



Figure 10 - Main Board with Potting. Antenna shown for 900 MHz band radio

Internal Photos

Applicant: Johnson Outdoors

Model Name: Ultrerra with iPilot Link

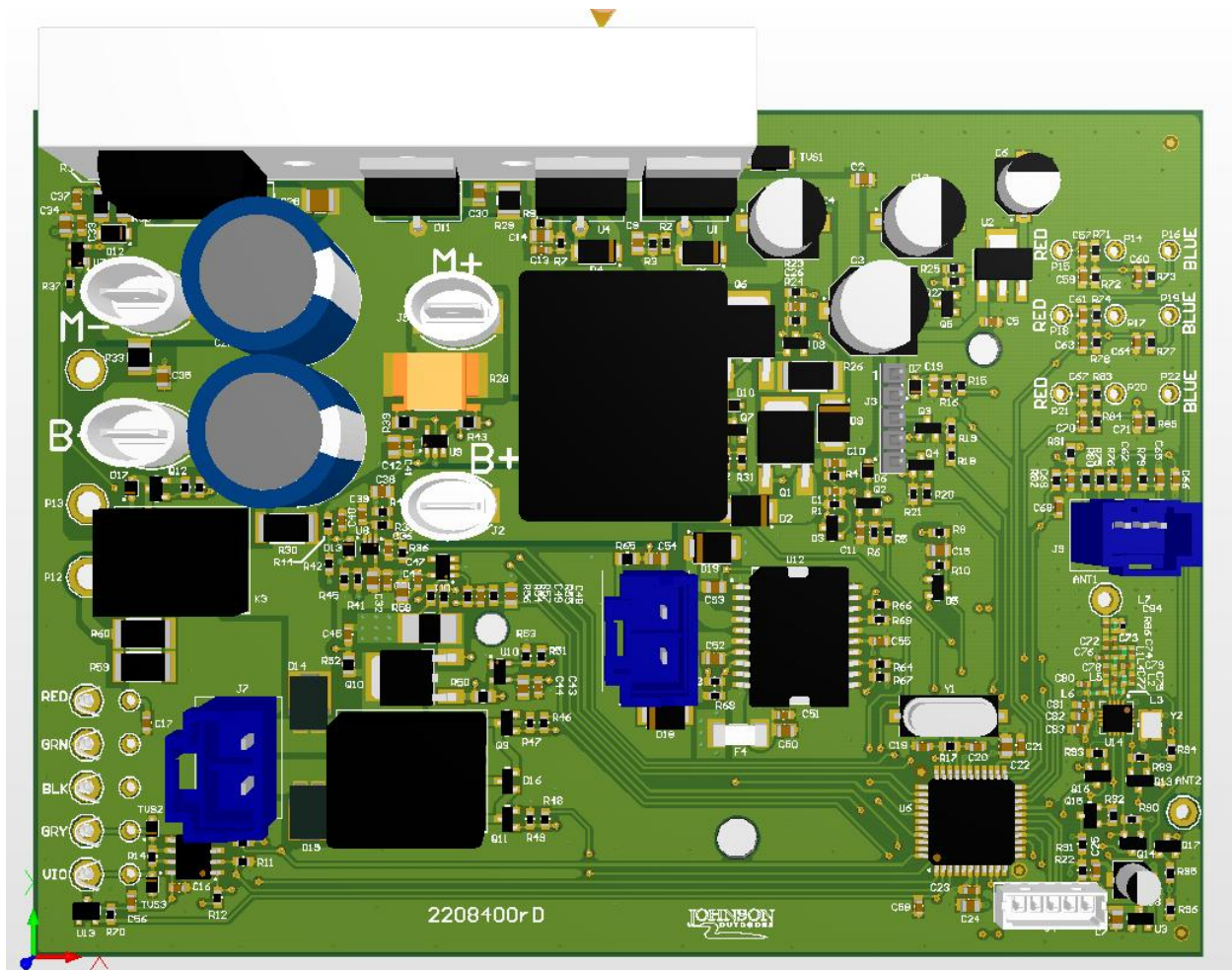


Figure 11 - Main Board, Front

Internal Photos

Applicant: Johnson Outdoors

Model Name: Ulterra with iPilot Link

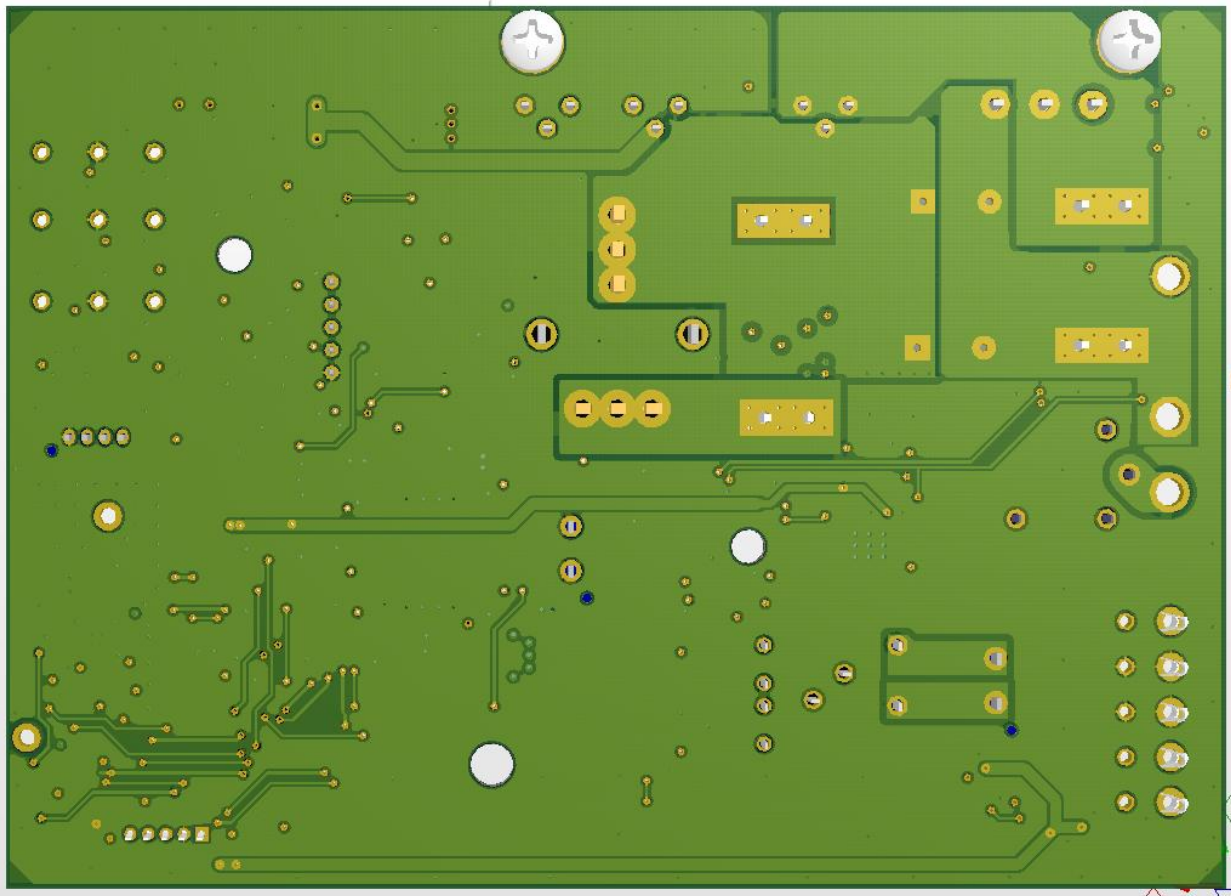


Figure 12 - Main Board, Back

Internal Photos

Applicant: Johnson Outdoors

Model Name: Ulterra with iPilot Link



Figure 13 - iPilot Link Head, Top

Internal Photos

Applicant: Johnson Outdoors

Model Name: Ulterra with iPilot Link



Figure 14 - iPilot Link Head, Underside

Internal Photos

Applicant: Johnson Outdoors

Model Name: Ulterra with iPilot Link



Figure 15 - iPilot Link head, Underside opened

Internal Photos

Applicant: Johnson Outdoors

Model Name: Ulterra with iPilot Link



Figure 16 - iPilot Link circuit board (antenna shown in top left)

Internal Photos

Applicant: Johnson Outdoors

Model Name: Ultrerra with iPilot Link

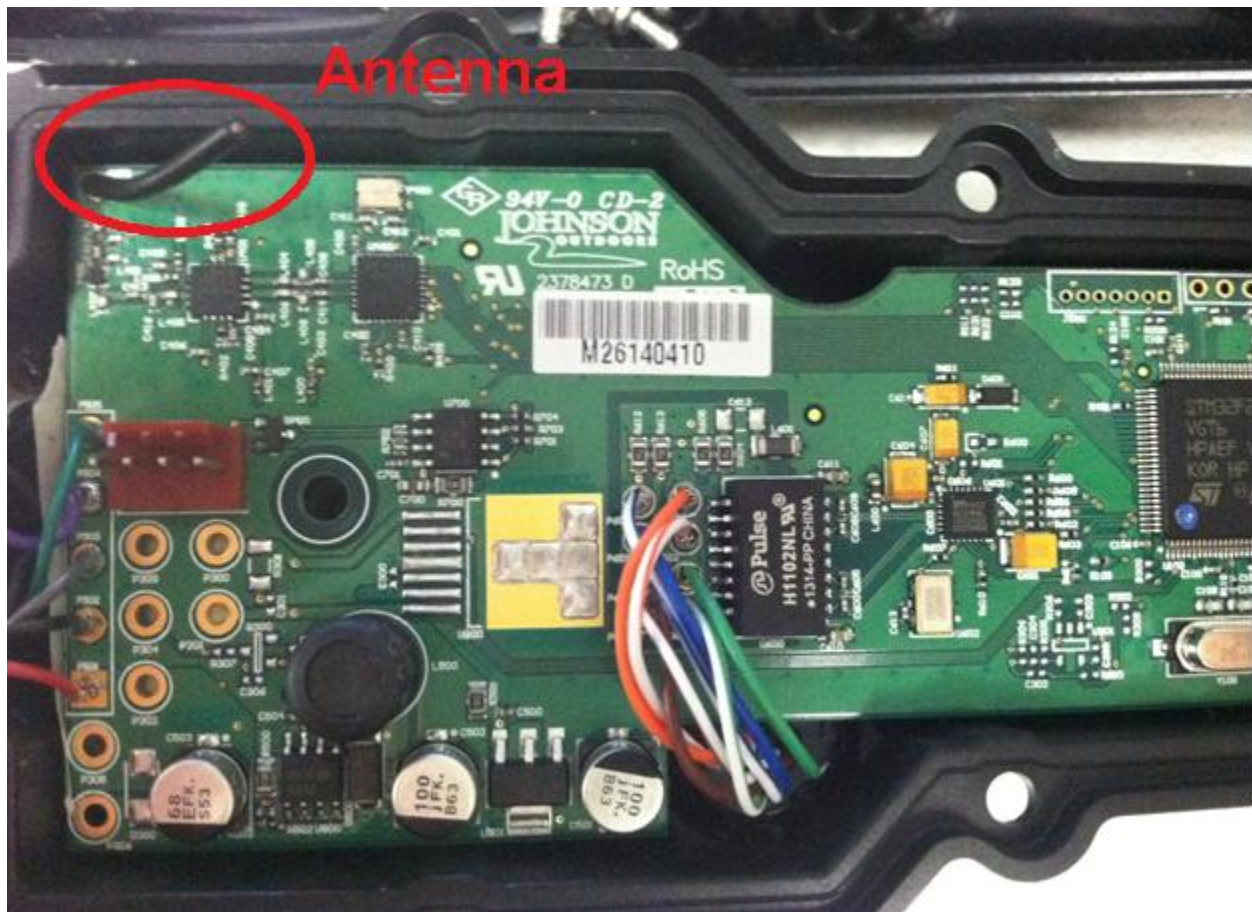


Figure 17 - iPilot Link circuit board detail. Antenna shown for 2.4Ghz transmitter

Internal Photos

Applicant: Johnson Outdoors

Model Name: Ulterra with iPilot Link

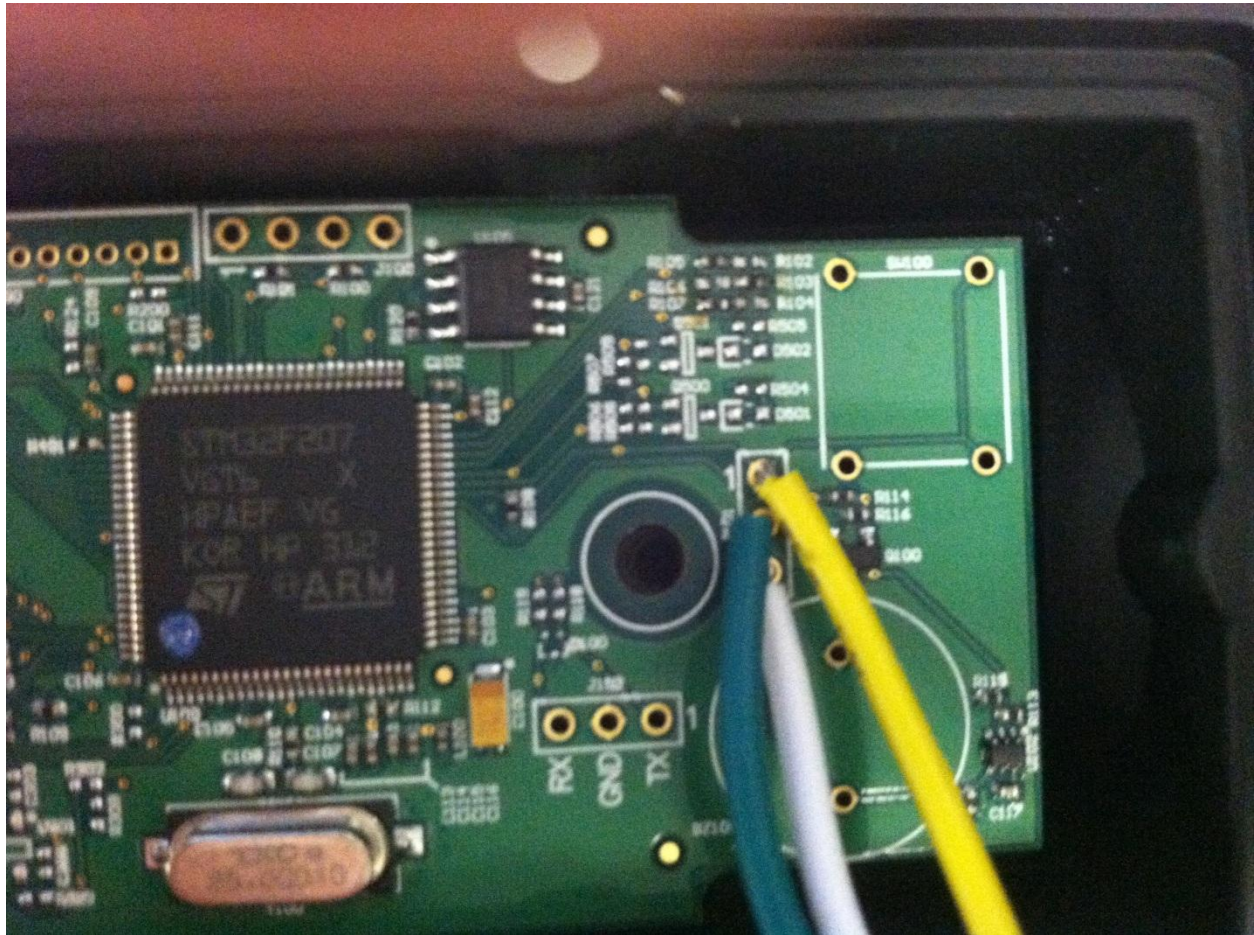


Figure 18 - i-Pilot Link circuit board detail

Internal Photos

Applicant: Johnson Outdoors

Model Name: Ulterra with iPilot Link

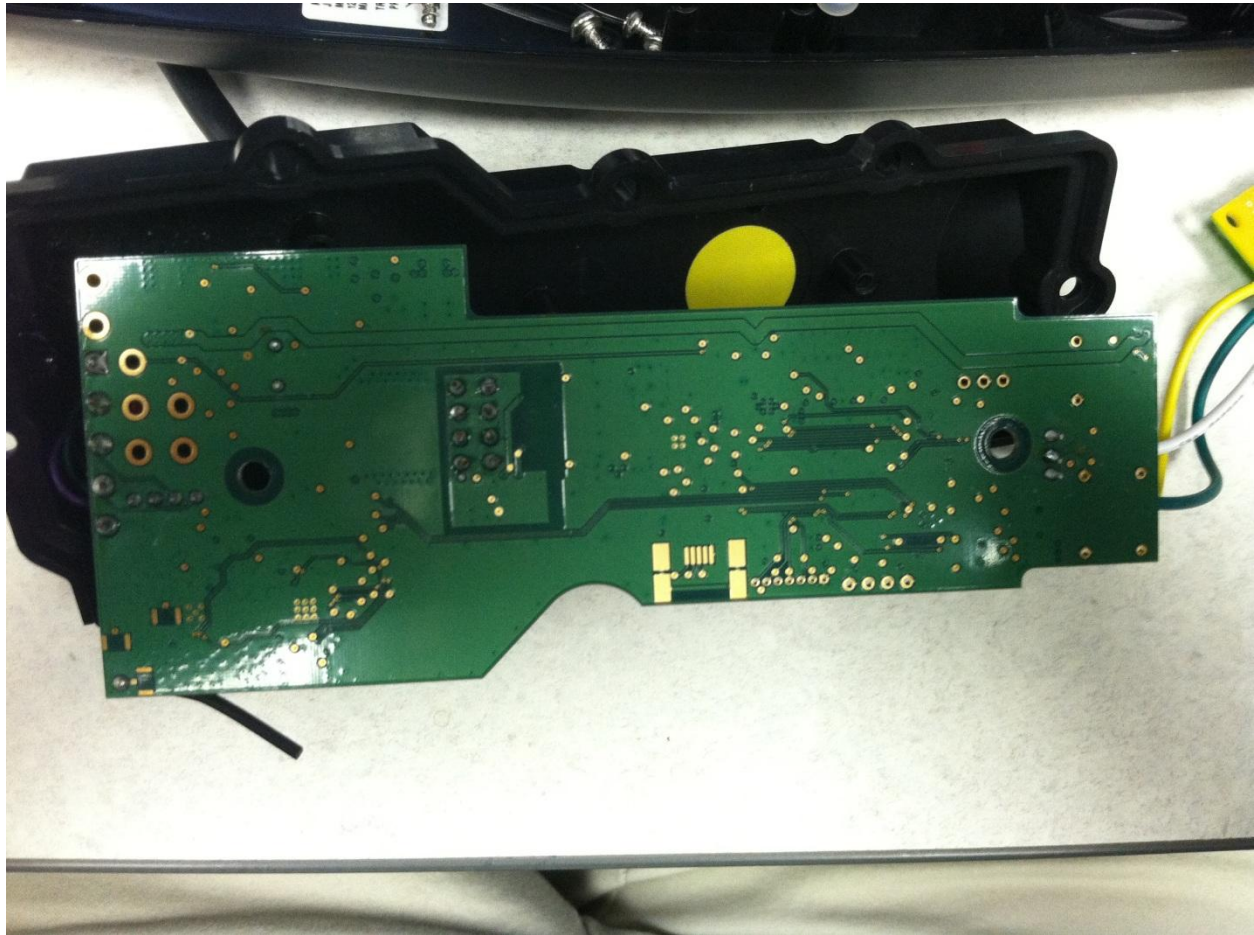


Figure 19 - iPilot Link circuit board, bottom

Internal Photos

Applicant: Johnson Outdoors

Model Name: Ulterra with iPilot Link



Figure 20 - iPilot Link button and beeper board, top

Internal Photos

Applicant: Johnson Outdoors

Model Name: Ulterra with iPilot Link

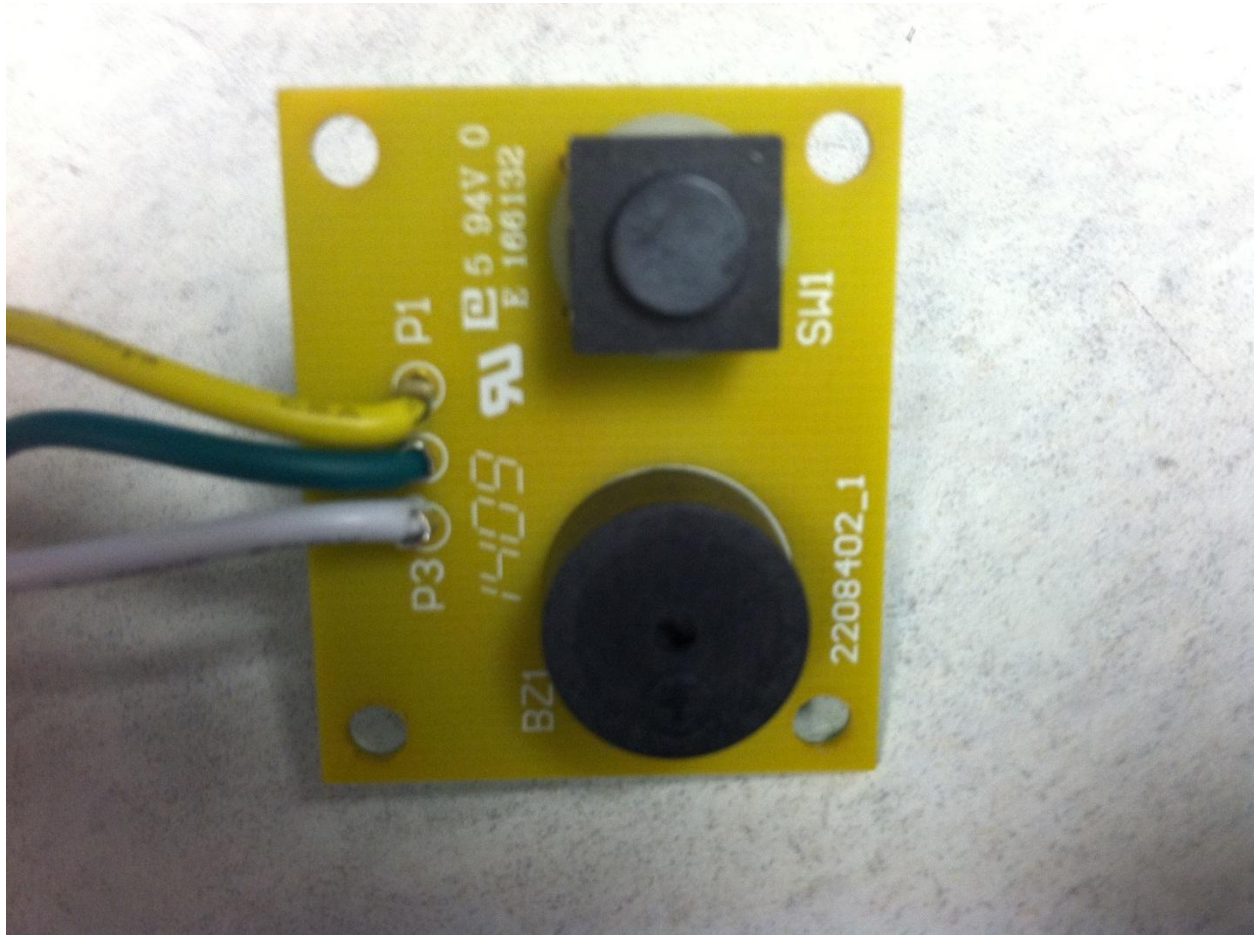


Figure 21 - iPilot Link button and beeper board, top

Internal Photos

Applicant: Johnson Outdoors

Model Name: Ultrerra with iPilot Link

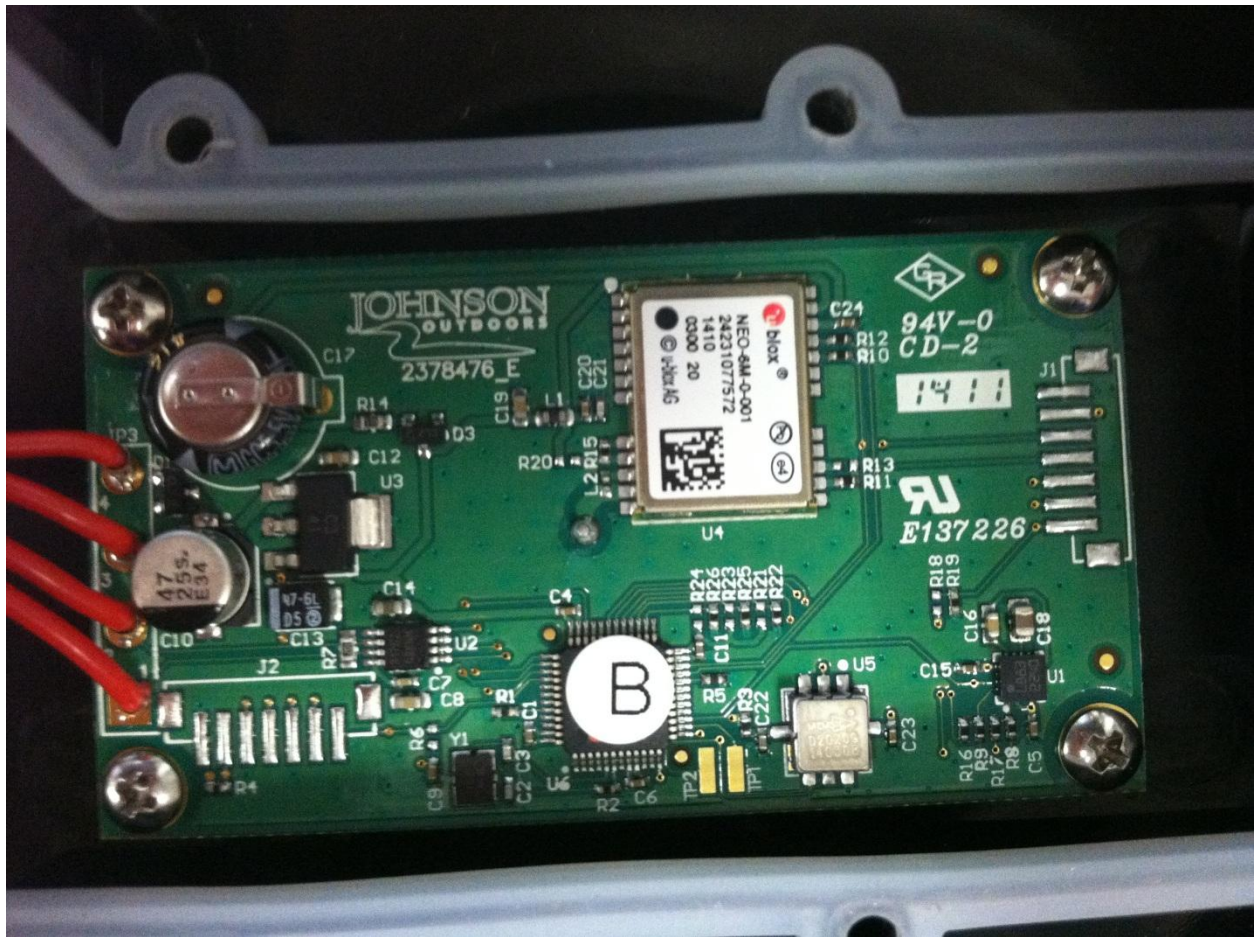


Figure 22 - iPilot Link Compass Board, top

Internal Photos

Applicant: Johnson Outdoors

Model Name: Ulterra with iPilot Link



Figure 23 - iPilot Link compass board, bottom