

D

C

B

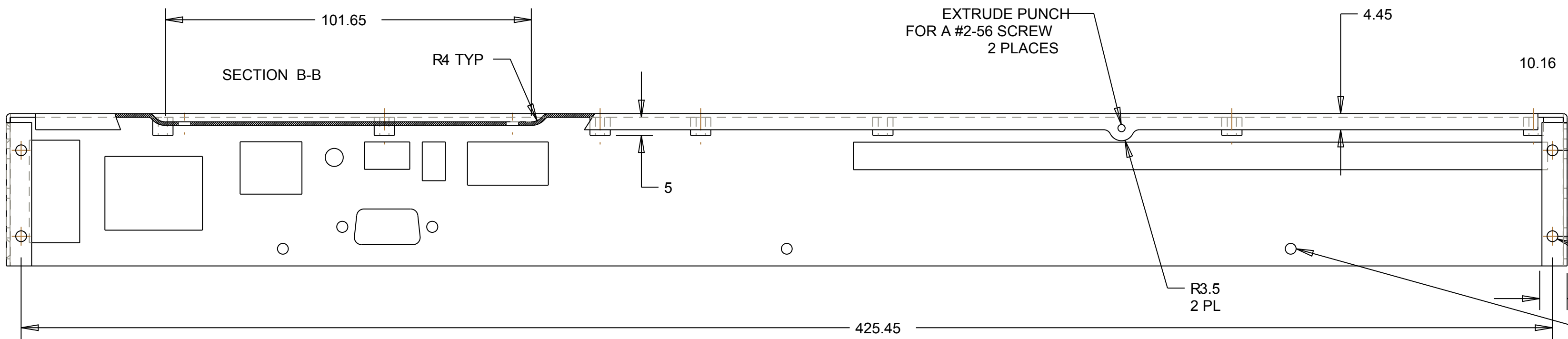
A

D

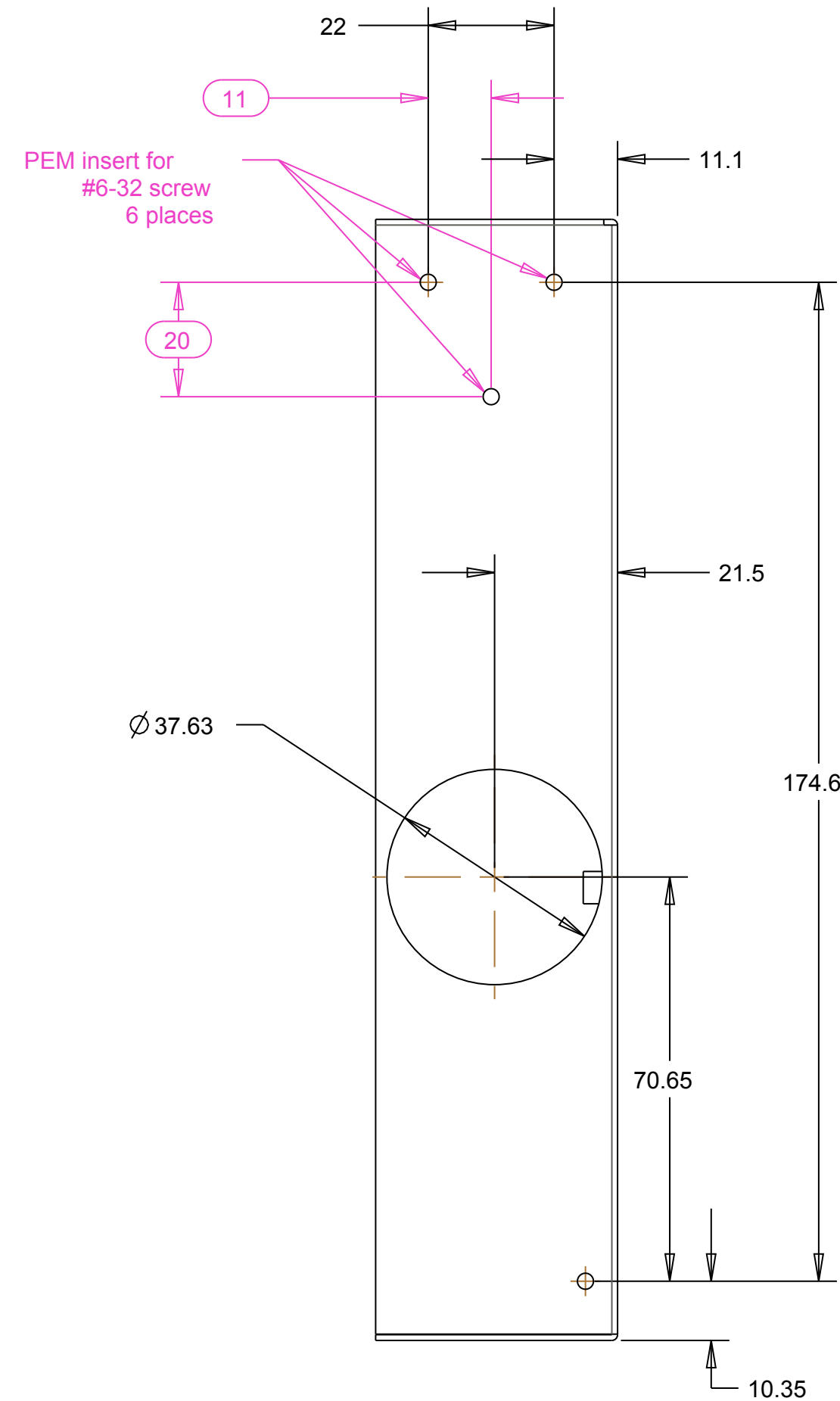
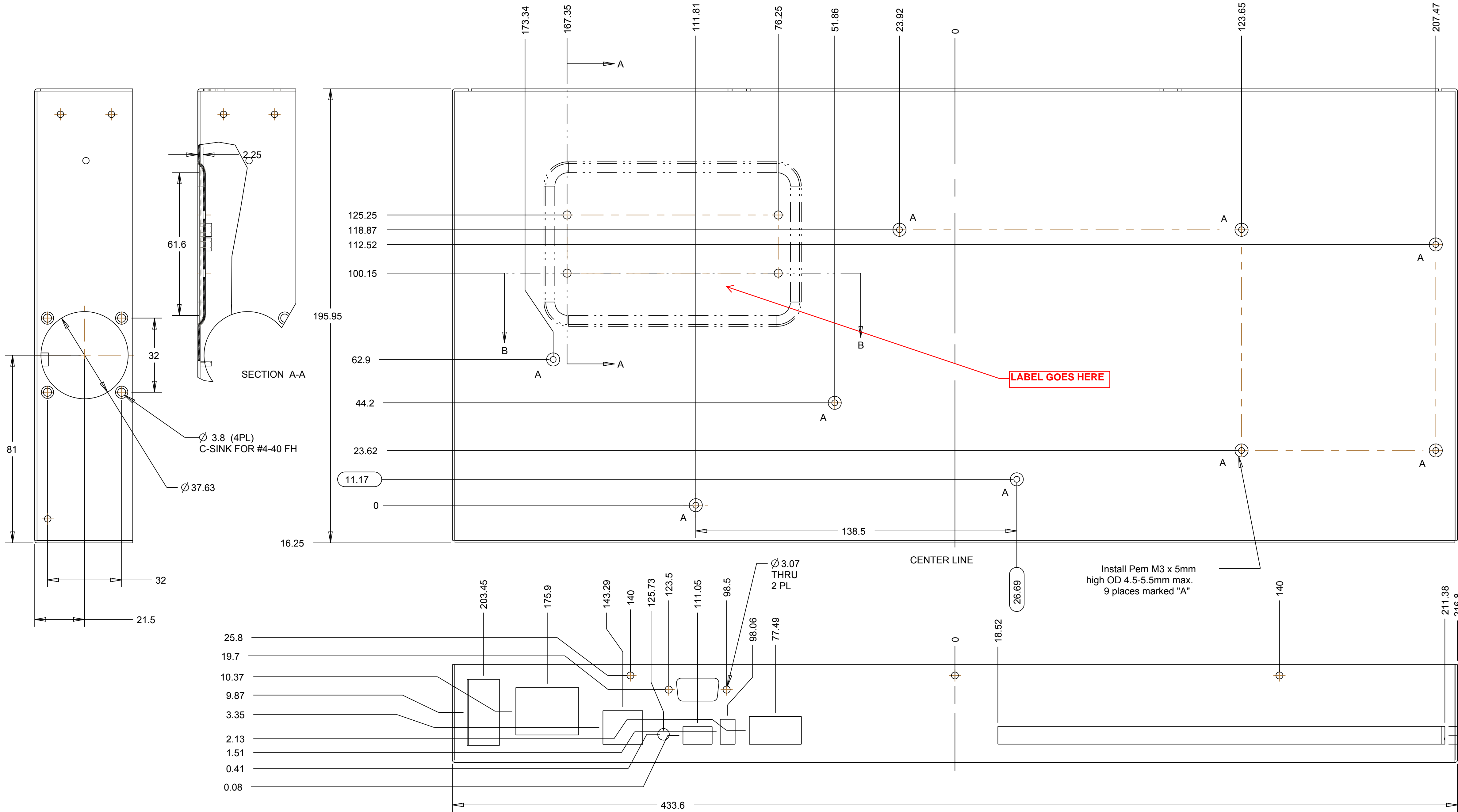
C

B

A



- 2 - chg extrude punch to M3 size. Add one "A" standoff
- 3 - add DB9 punchout in rear panel
- 4 - add 3, m3 extrude punch holes across back, add 2, #2-56 extrude punch holes across front edge material chg to Aluminum
- 5 - Add standoff (zone B4) - 05-08-09
- 6 - Add additional holes for adj. bracket. Change bracket mounting holes to PEM inserts (zone C1) ECO #258



All information contained with this document is owned by REVOLABS and shall not be reproduced or used in part or in whole as the basis for manufacture or sale of item(s) without prior written consent from REVOLABS.

NOTES:

1. MATERIAL: 18 GA BRUSHED ALUMINUM.
2. ALL SHARP EDGESTO BE BROKEN TO 0.30MM CHAMFER MAX.
3. PRIOR TO PAINTING OR FINISHING, PART MUST BE CLEANED.
4. ENTIRE EXTERNAL SURFACE OF PART TO BE POWDER COATED, BLACK, MEDIUM TEXTURE. MASK INSIDE SURFACE AREAS NOTED TO ALLOW FOR GROUND CONNECTION.

UNLESS OTHERWISE SPECIFIED ALL DIMENSIONS ARE IN MM. UNSPECIFIED TOLERANCES TO BE DETERMINED BY CHART BELOW.		REVOLABS		
		3D Model Name	1000398	
.X	±.25	BOTTOM/REAR PANEL, OPAL RACK		
.XX	±.13	PART NUMBER : 1000398	REV.	6
.XXX	±.04	Drawn by : S.Lyman	Date : 09/16/08	
ANGLES	±0.5 °	SCALE: 1.000	1 of 2	

D

C

B

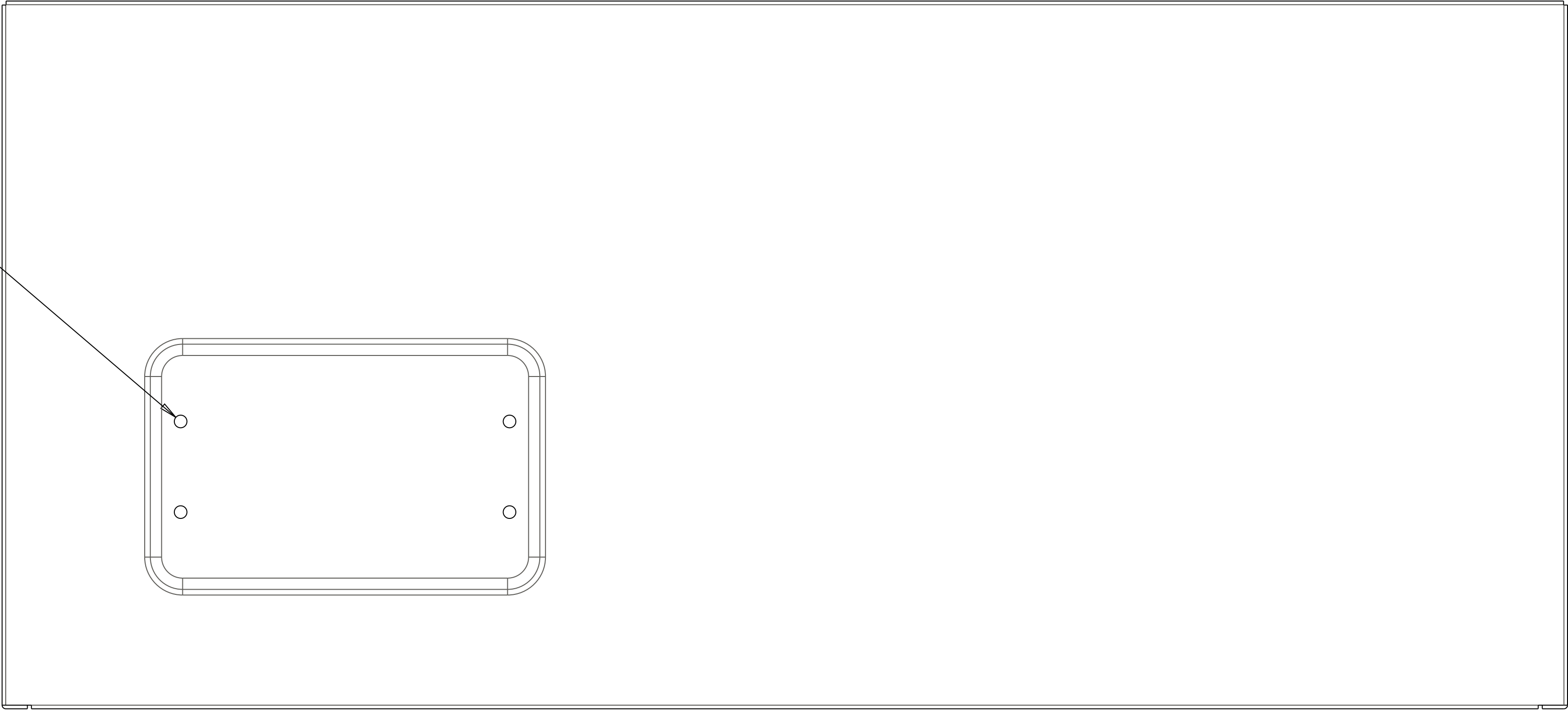
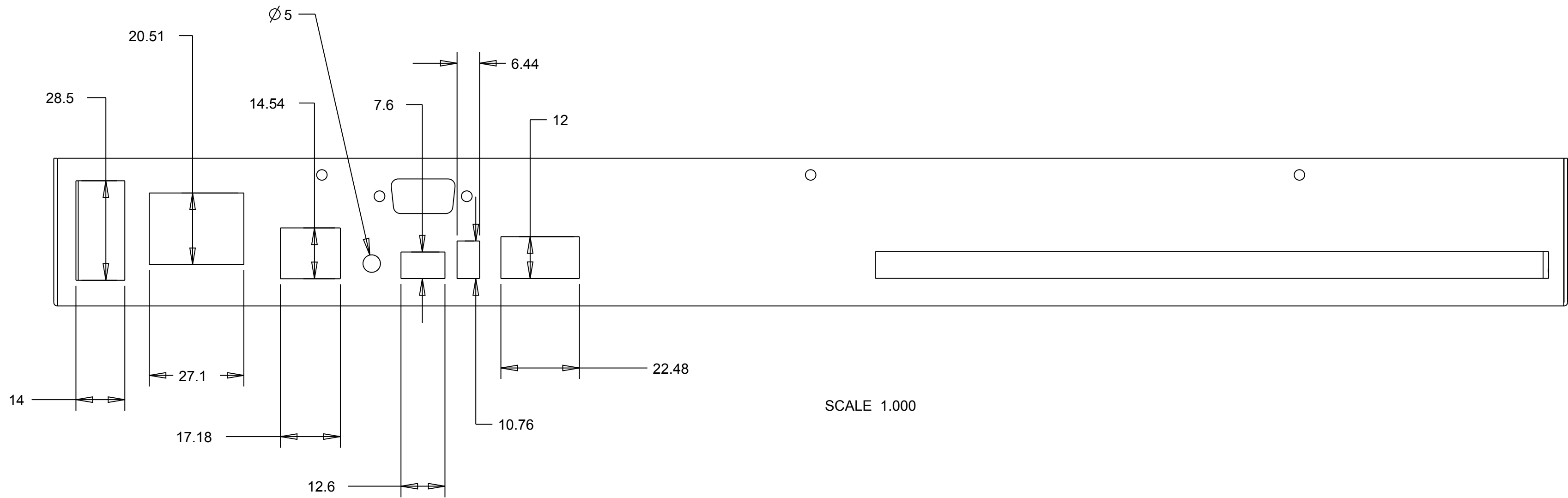
A

D

C

B

A



LABEL RECESS
PRESSED INTO BOTTOM 0.25MM DEEP

UNLESS OTHERWISE SPECIFIED ALL DIMENSIONS ARE IN MM. UNSPECIFIED TOLERANCES TO BE DETERMINED BY CHART BELOW.		REVOLABS				
		3D Model Name		1000398		
.X	±.25	SEE SHT- 1				
.XX	±.13	PART NUMBER : 1000398			REV.	SHT-1
.XXX	±.04	Drawn by : S.Lyman		Date : 09/16/08		
ANGLES	±0.5 °	SCALE: 1.000		2 of 2		