



Quanta Microsystems Inc.

ZM100 operation manual-RF mode



Quanta Microsystems, Inc.

Subject:	ZM100 operation manual-RF mode	Rev:	0.1		
Doc No.	OP_ZM100-1	Revised Date:	2007/05/16	Page:	2 of 9

Reason for Release :

Revision	Effective Date	Author	Description of Changes
0.1	05/16/2007	Samuel Wang	First draft



Subject:	ZM100 operation manual-RF mode	Rev:	0.1
Doc No.	OP_ZM100-1	Revised Date:	2007/05/16
		Page:	3 of 9

1. Adaptor board connection and setup

■ Power IN (+3.3Vdc)

◆ **USB plug in:**

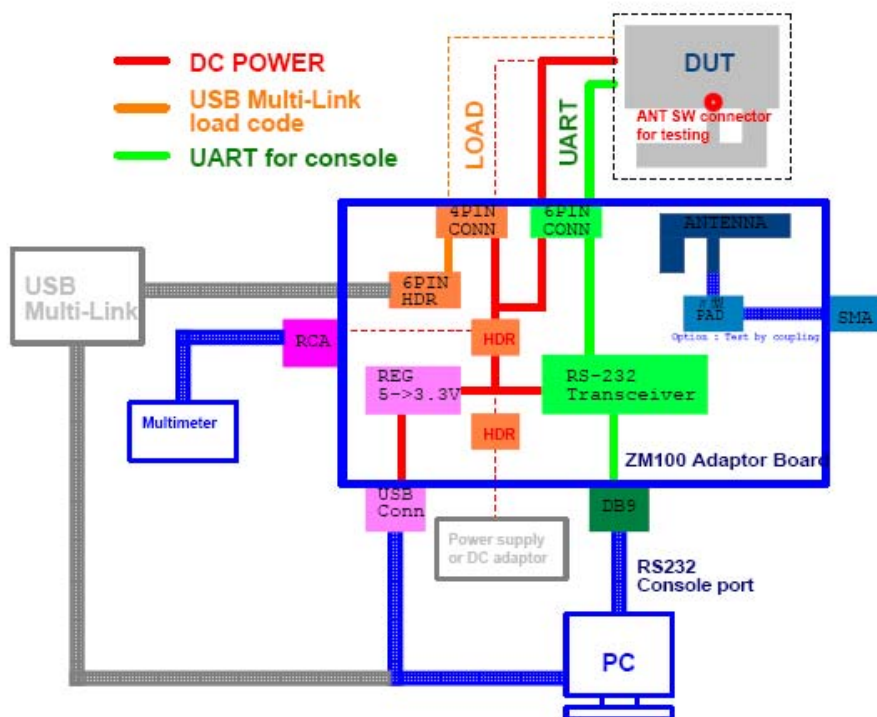
- J_USB should be selected as USB PWR IN mode
- USB +5V → LDO→+3.3V

◆ **RCA Jack plug in:**

- J_USB should be opened
- Use a +3.3V(inner) DC adaptor plug in CON_RCA

◆ **Pin header plug in:**

- Use other power source(such as power supply)
- Supply +3.3V and plug in by J_RCA pin header



DOWNLOAD SETUP
 1. ADAPTOR BOARD POWER IN
 2. PC =>USB Multi-Link =>4pin wire to DUT

RF TEST SETUP
 1. ADAPTOR BOARD POWER IN
 2. PC =>DB9 =>6pin wire to DUT
 3. ANT SW(or coupling) to test equipment

DUT 3.3V Power
 1. Provided by USB +5V => 3.3V LDO
 2. DC power supply (3.3V)
 3. 3.3V DC adaptor

QMI PROPERTY & CONFIDENTIAL!

Fig1.1 Adaptor board and DUT test setup

Quanta Microsystems, Inc. No. 5, Lane 91, Dongmei Rd. Hsinchu 300, Taiwan, R.O.C	
Model: 100ZM	
File: ZM100 Adaptor Board Block Diagram	Drawn: Samuel Wang
DWG No: BD_ZM100	Rev: R10
Size: A4	Date: Wednesday, April 04, 2007
	Sheet: 2 of 3

QMI PROPERTY & CONFIDENTIAL!



Subject:	ZM100 operation manual-RF mode	Rev:	0.1
Doc No.	OP_ZM100-1	Revised Date:	2007/05/16
		Page:	4 of 9

- **UART connection**
 - ◆ Use a D-SUB9 cable connects to PC com port
 - ◆ Open OS hyper terminal as a com port used
 - ◆ Set properties as following

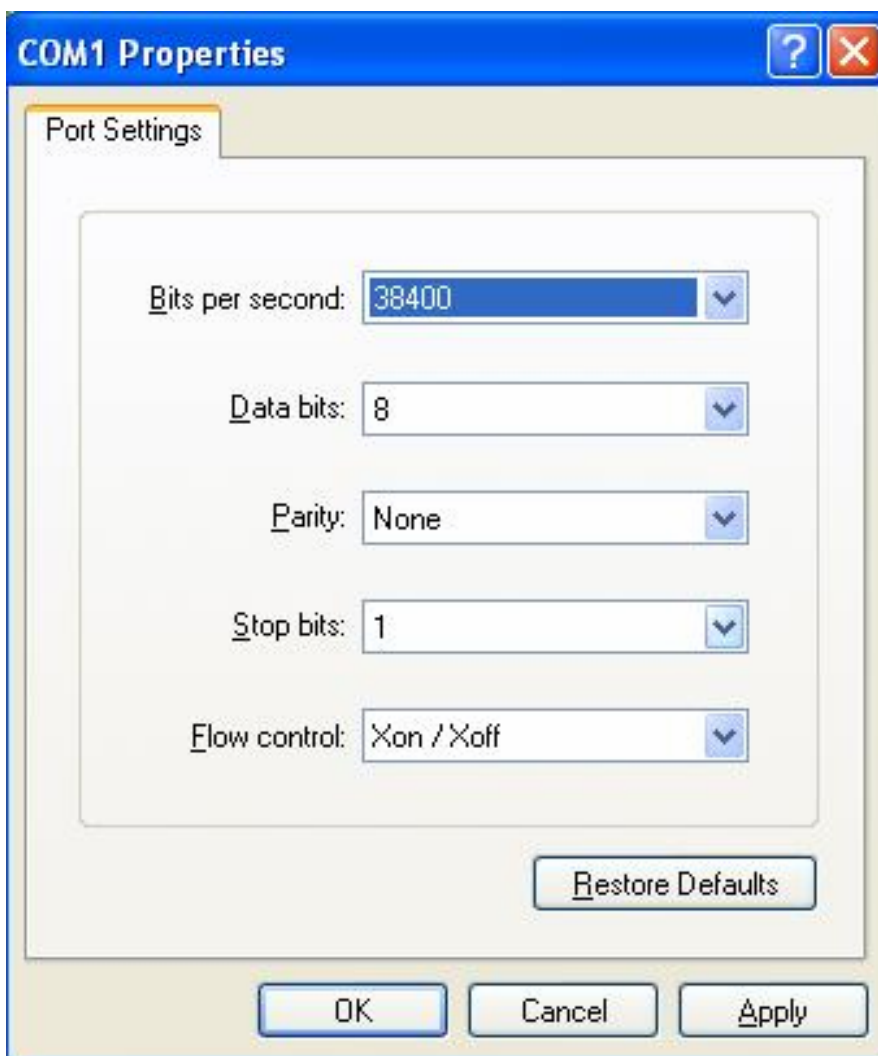


Fig 1.1 Hyper terminal COM port settings



Subject:	ZM100 operation manual-RF mode	Rev:	0.1
Doc No.	OP_ZM100-1	Revised Date:	2007/05/16
		Page:	5 of 9

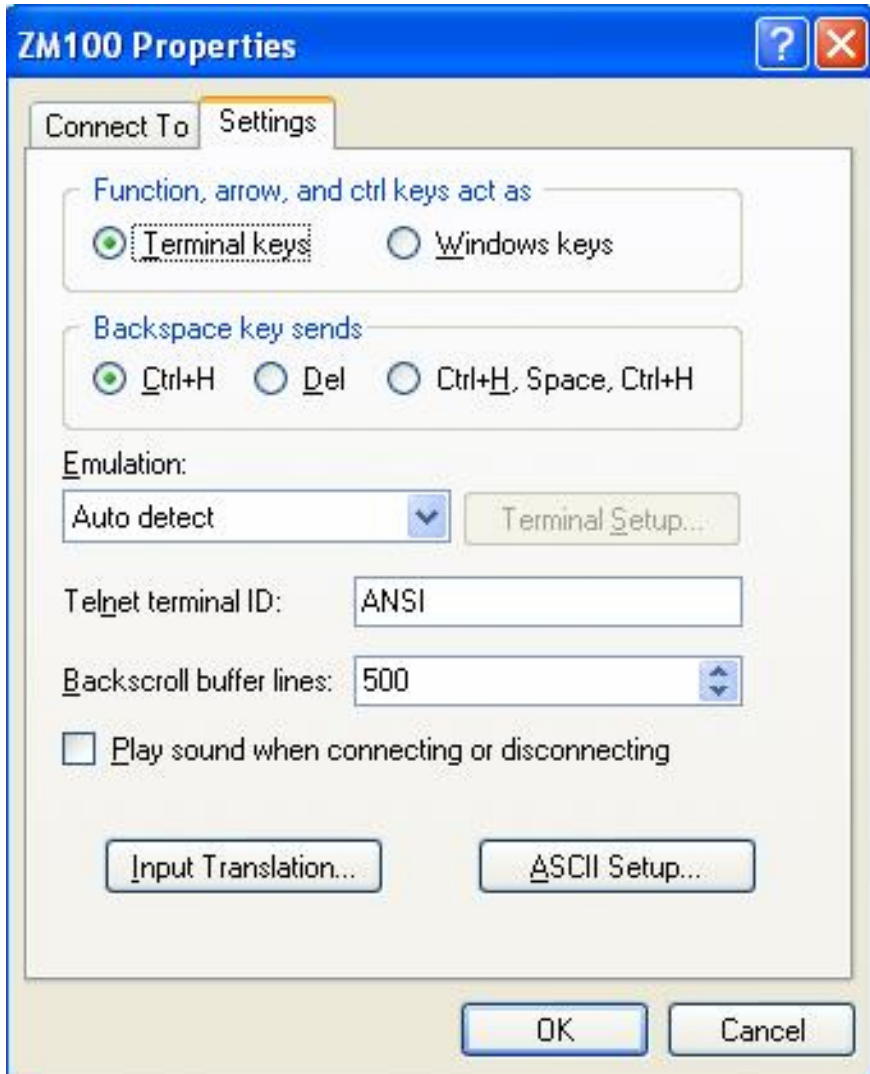


Fig 1.2 Hyper terminal Properties settings



Subject:	ZM100 operation manual-RF mode	Rev:	0.1
Doc No.	OP_ZM100-1	Revised Date:	2007/05/16
		Page:	6 of 9

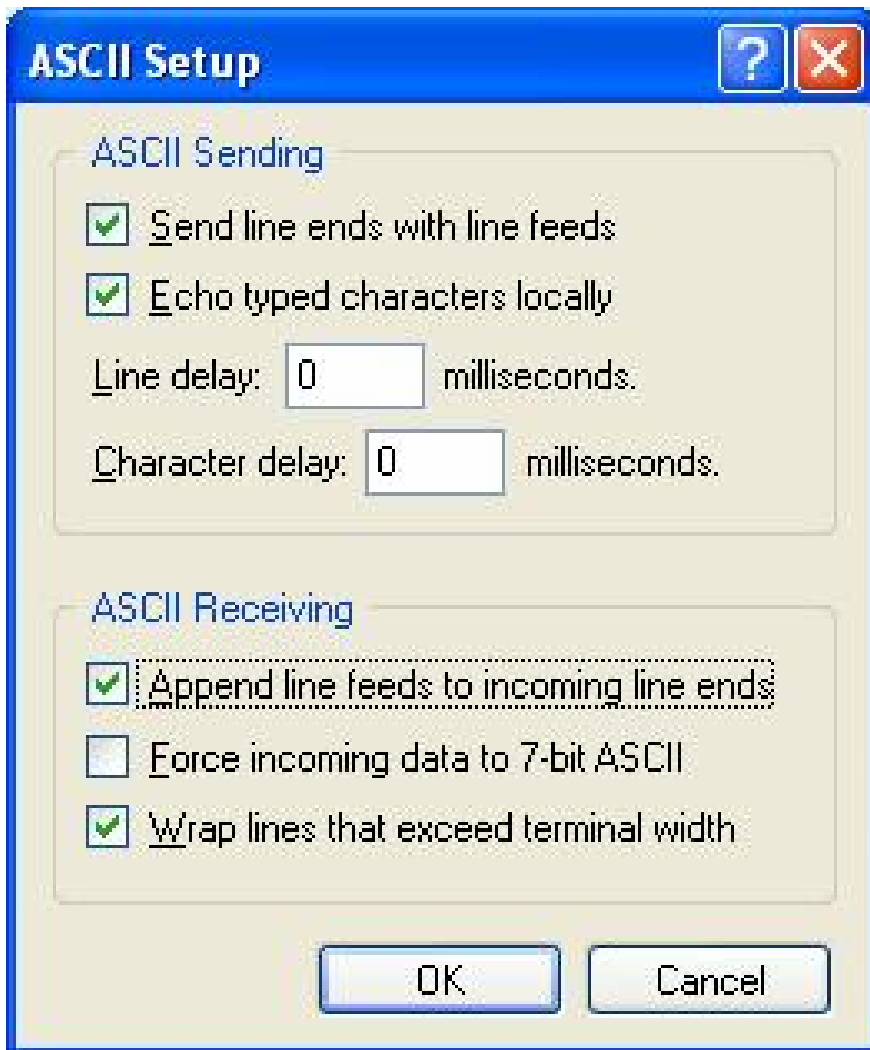


Fig 1.3 ASCII setup

After finished above item, connect DUT and adaptor board by 6pin wire connection. Then it will be operating as RF test mode



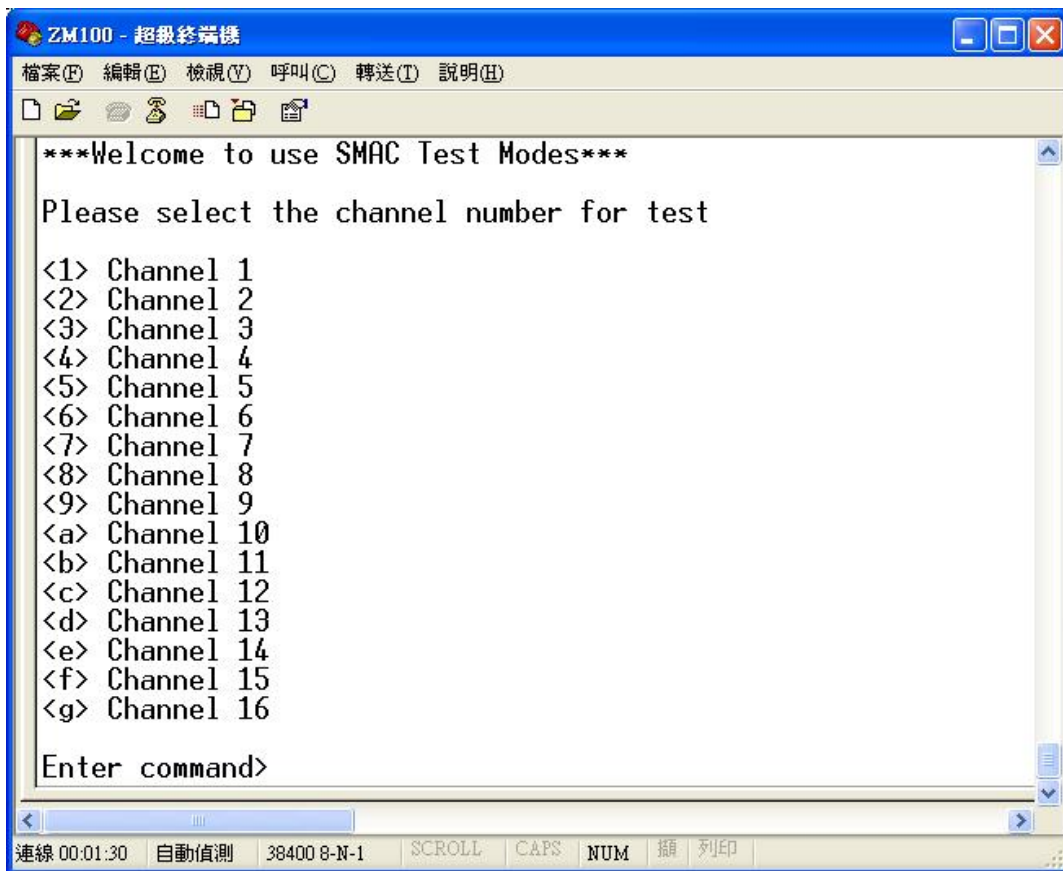
Subject:	ZM100 operation manual-RF mode	Rev:	0.1
Doc No.	OP_ZM100-1	Revised Date:	2007/05/16
		Page:	7 of 9

2. RF test mode application

■ Channel selection

◆ Set channel

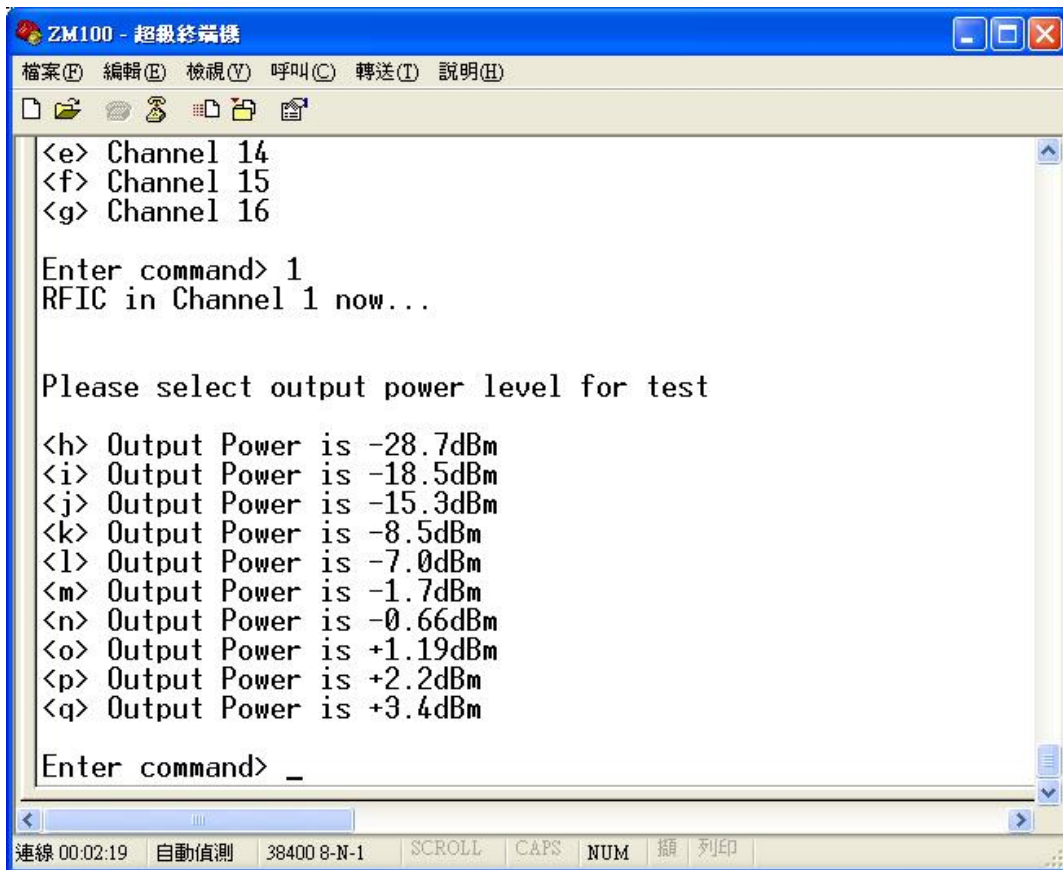
- Select character "1,2,3...,f,g to set channel 1~16





Subject:	ZM100 operation manual-RF mode	Rev:	0.1
Doc No.	OP_ZM100-1	Revised Date:	2007/05/16
		Page:	8 of 9

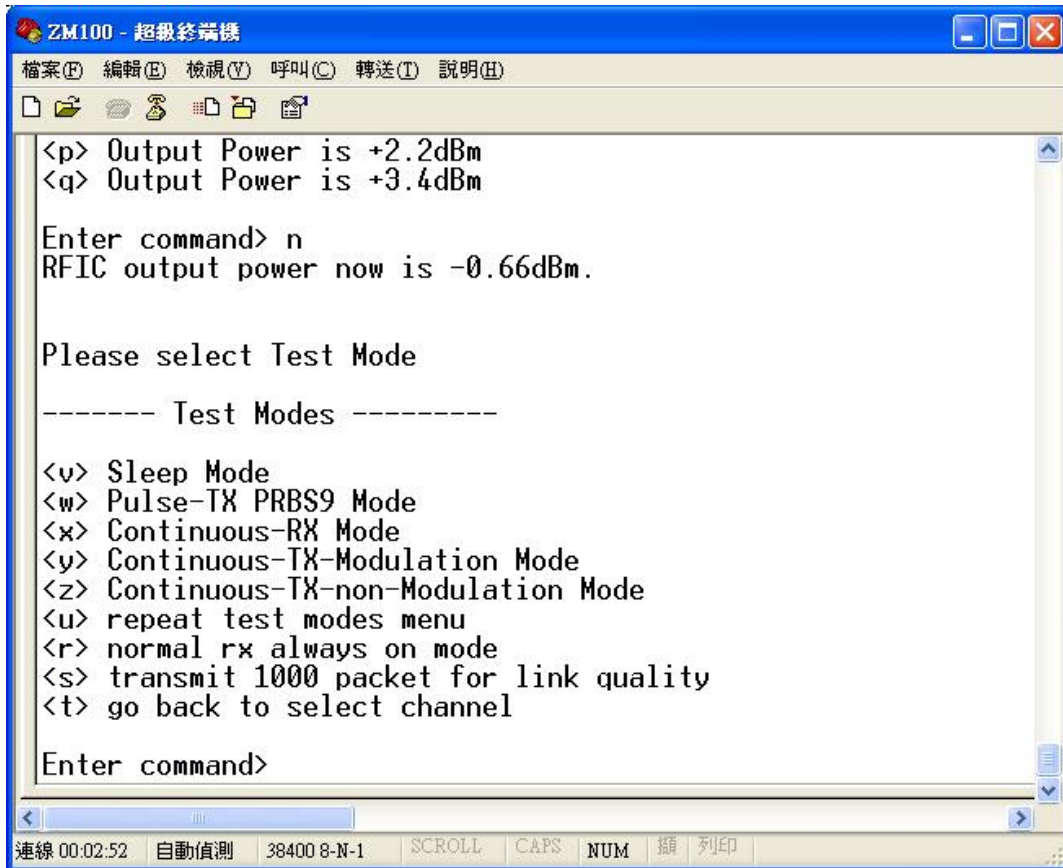
- ◆ Set output power
 - Default power: -0.66dBm (select character “n”)





Subject:	ZM100 operation manual-RF mode	Rev:	0.1
Doc No.	OP_ZM100-1	Revised Date:	2007/05/16
		Page:	9 of 9

- ◆ Set operation mode
 - Select character “v,w,x...r,s” for operation mode



After you finished testing, you can select character “t” to go back to main manual. If you can not go back to main manual (ex. DUT on sleep mode); it shall be power off then power on DUT to go back to main manual.

Federal Communication Commission Interference Statement

This equipment has been tested and found to comply with the limits for a Class B digital device, pursuant to Part 15 of the FCC Rules. These limits are designed to provide reasonable protection against harmful interference in a residential installation. This equipment generates, uses and can radiate radio frequency energy and, if not installed and used in accordance with the instructions, may cause harmful interference to radio communications. However, there is no guarantee that interference will not occur in a particular installation. If this equipment does cause harmful interference to radio or television reception, which can be determined by turning the equipment off and on, the user is encouraged to try to correct the interference by one of the following measures:

- Reorient or relocate the receiving antenna.
- Increase the separation between the equipment and receiver.
- Connect the equipment into an outlet on a circuit different from that to which the receiver is connected.
- Consult the dealer or an experienced radio/TV technician for help.

FCC Caution: Any changes or modifications not expressly approved by the party responsible for compliance could void the user's authority to operate this equipment.

This device complies with Part 15 of the FCC Rules. Operation is subject to the following two conditions: (1) This device may not cause harmful interference, and (2) this device must accept any interference received, including interference that may cause undesired operation.

FCC Radiation Exposure Statement:

This equipment complies with FCC radiation exposure limits set forth for an uncontrolled environment. This equipment should be installed and operated with minimum distance 20cm between the radiator & your body. This transmitter must not be co-located or operating in conjunction with any other antenna or transmitter.

This device is intended only for OEM integrators under the following conditions:

1. The antenna must be installed such that 20 cm is maintained between the antenna and users, and
2. The transmitter module may not be co-located with any other transmitter or antenna,

IMPORTANT NOTE: In the event that these conditions can not be met (for example certain laptop configurations or co-location with another transmitter), then the FCC authorization is no longer considered valid and the FCC ID can not be used on the final product. In these circumstances, the OEM integrator will be responsible for re-evaluating the end product (including the transmitter) and obtaining a separate FCC authorization.

End Product Labeling

This transmitter module is authorized only for use in device where the antenna may be installed such that 20 cm may be maintained between the antenna and users. The final end product must be labeled in a visible area with the following Contains: "FCC ID:T5U-ZM100".

Manual Information To the End User

The OEM integrator has to be aware not to provide information to the end user regarding how to install or remove this RF module in the user's manual of the end product which integrates this module.

The end user manual shall include all required regulatory information/warning as show in this manual.

IC Interference Statement

This device complies with RSS-210 of the IC Rules. Operation is subject to the following two conditions:

1. This device may not cause harmful interference, and
2. This device must accept any interference received, including interference that may cause undesired operation.

IC:7424A-ZM100

IC European Union Notice

Radio products with the CE marking comply with the R&TTE Directive (1999/5/EC), the EMC Directive (89/336/EEC) and the Low Voltage Directive (73/23/EEC) issued by the Commission of the European Community.

Compliance with these directives implies conformity to the following European Norms:

- ◆ EN 60950-1 Product Safety
- ◆ EN 300 328 Technical requirement for radio equipment
- ◆ EN 301 489-1/-17 General EMC requirements for radio equipment