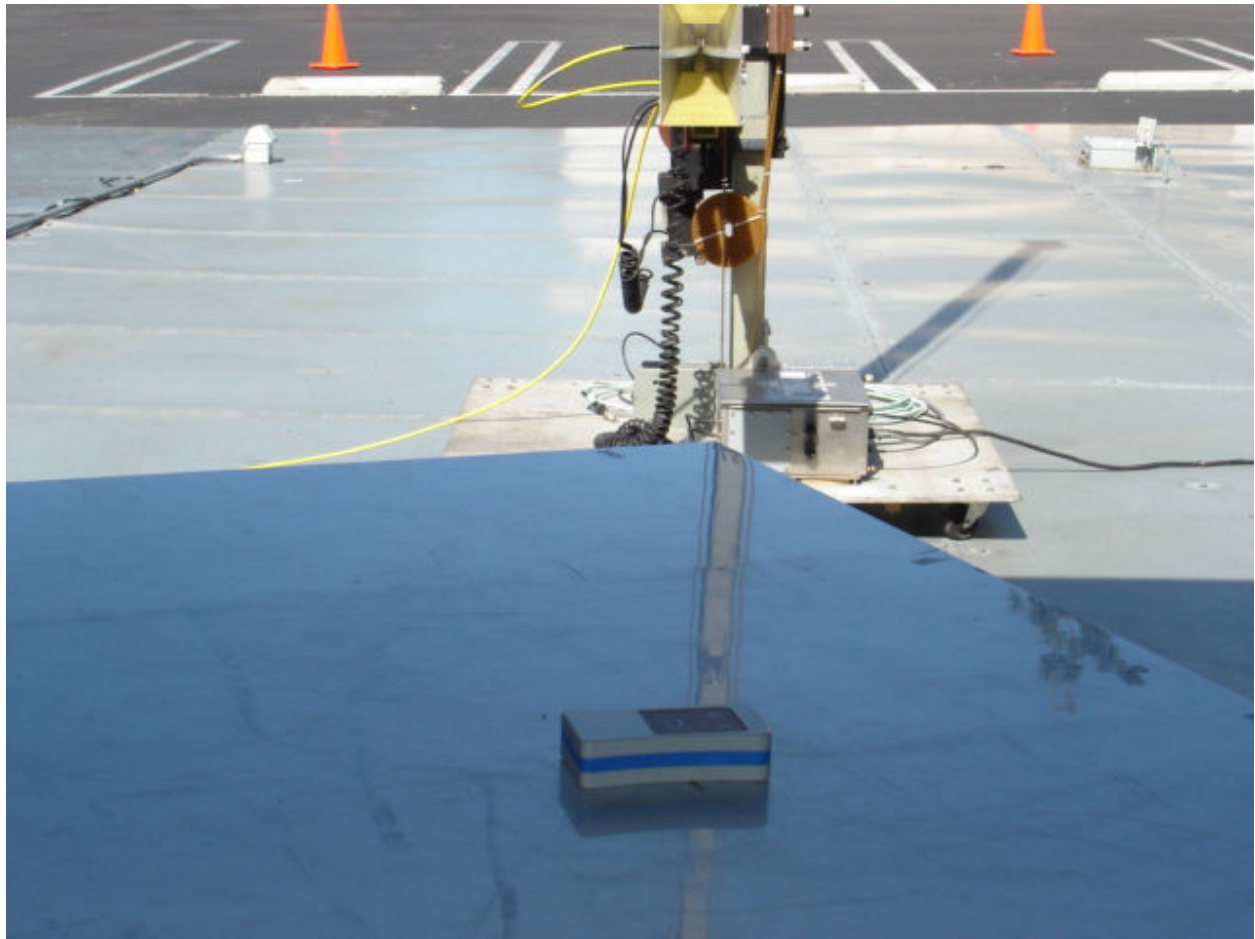




Detector, Radiated Emission (15.247 / 15.109)



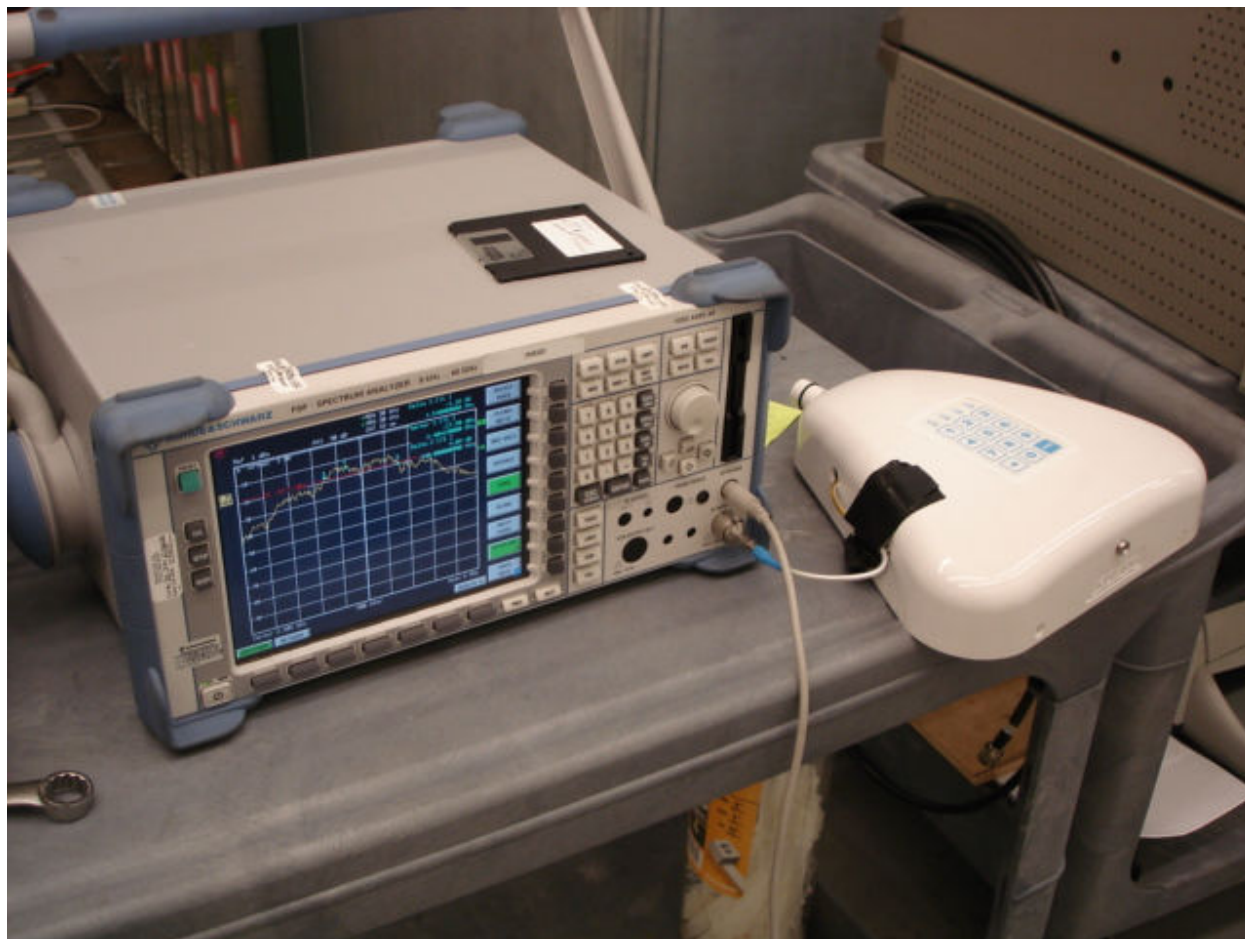
Remote, Radiated emission (15.247/15.109)



Remote, Conducted emission 1(15.107 / 15.207)



Remote, Conducted emission 2(15.107 / 15.207)



Conducted Output Power, 6 dB Bandwidth, Power density, Out of band antenna conducted emission (15.247)



Detector, Radiated emission prescan in the chamber



Remote, Radiated emission prescan in the chamber