

20130814_System check_Diple835v2 SN4d092

Frequency: 850 MHz; Duty Cycle: 1:1; Room Ambient Temperature: 24.0°C; Liquid Temperature: 23.5°C

Medium parameters used (interpolated): $f = 850$ MHz; $\sigma = 0.994$ S/m; $\epsilon_r = 55.009$; $\rho = 1000$ kg/m³

DASY5 Configuration:

- Area Scan Setting - Find Secondary Maximum Within: 2.0 dB and with a peak SAR value greater than 0.0012W/kg
- Electronics: DAE4 Sn877; Calibrated: 2013/03/12
- Probe: EX3DV4 - SN3665; ConvF(9.82, 9.82, 9.82); Calibrated: 2013/05/07;
- Sensor-Surface: 1.4mm (Mechanical Surface Detection)
- Phantom: ELI 4.0; Type: QDOVA001BA; Serial: 1056

Body/Pin=100mW, d=15mm/Area Scan (8x13x1): Measurement grid: dx=15mm, dy=15mm

[Info: Interpolated medium parameters used for SAR evaluation.](#)

Maximum value of SAR (measured) = 1.14 W/kg

Body/Pin=100mW, d=15mm/Zoom Scan (7x7x7)/Cube 0: Measurement grid: dx=5mm, dy=5mm, dz=5mm

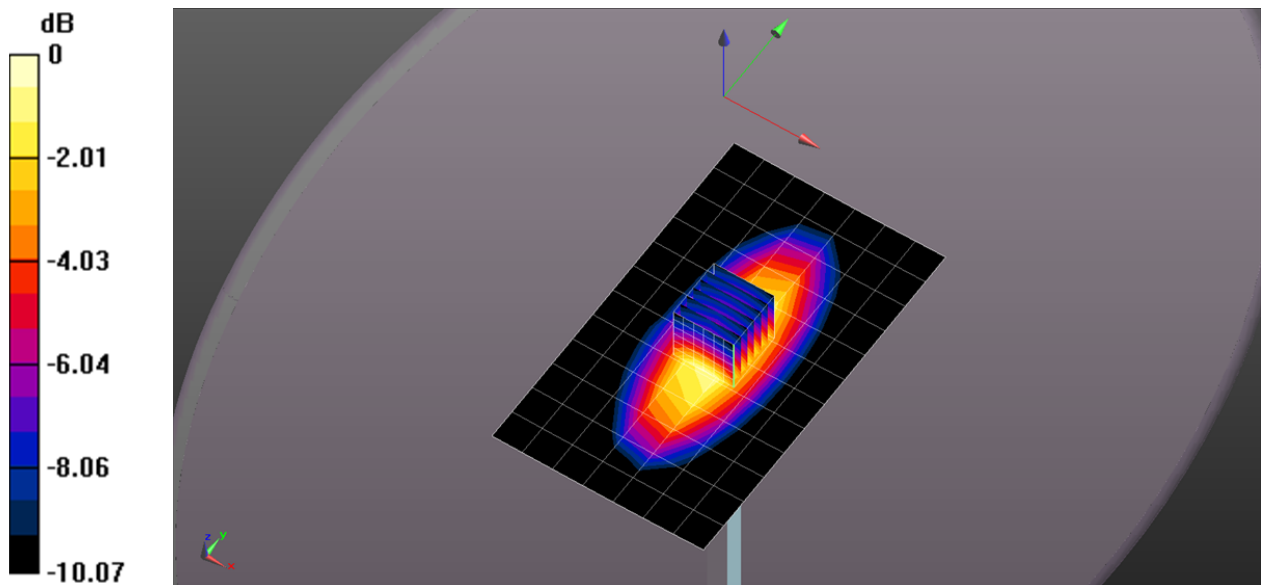
Reference Value = 38.016 V/m; Power Drift = -0.02 dB

Peak SAR (extrapolated) = 1.44 W/kg

SAR(1 g) = 0.969 W/kg; SAR(10 g) = 0.642 W/kg

[Info: Interpolated medium parameters used for SAR evaluation.](#)

Maximum value of SAR (measured) = 1.28 W/kg



0 dB = 1.28 W/kg = 1.07 dBW/kg

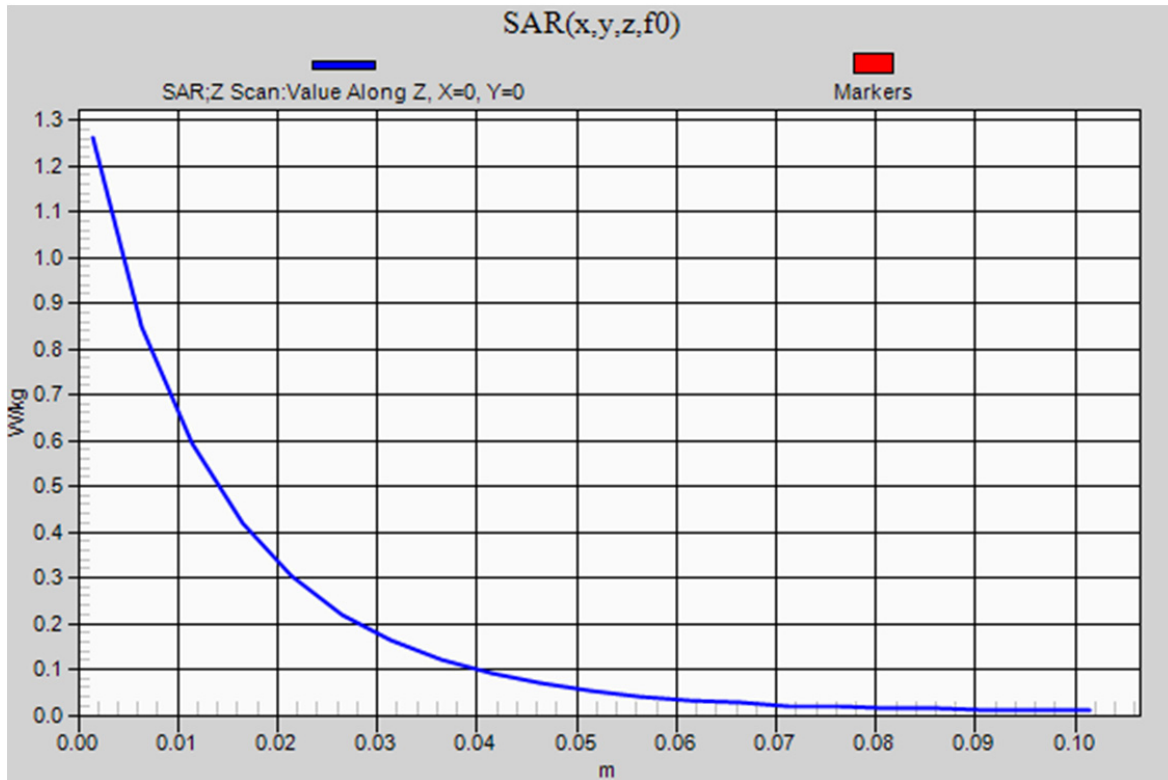
20130814_System check_Diple835v2 SN4d092

Frequency: 850 MHz; Duty Cycle: 1:1

Body/Pin=100mW, d=15mm/Z Scan (1x1x21): Measurement grid: dx=20mm, dy=20mm, dz=5mm

Info: [Interpolated medium parameters used for SAR evaluation.](#)

Maximum value of SAR (measured) = 1.26 W/kg



20130815_System Check_Diple1800v2 SN2d062

Frequency: 1800 MHz; Duty Cycle: 1:1; Room Ambient Temperature: 24.0°C; Liquid Temperature: 23.5°C

Medium parameters used (interpolated): $f = 1800$ MHz; $\sigma = 1.539$ S/m; $\epsilon_r = 52.664$; $\rho = 1000$ kg/m³

DASY5 Configuration:

- Area Scan Setting - Find Secondary Maximum Within: 2.0 dB and with a peak SAR value greater than 0.0012W/kg
- Electronics: DAE4 Sn877; Calibrated: 2013/03/12
- Probe: EX3DV4 - SN3665; ConvF(8.06, 8.06, 8.06); Calibrated: 2013/05/07;
- Sensor-Surface: 1.4mm (Mechanical Surface Detection)
- Phantom: ELI 4.0; Type: QDOVA001BA; Serial: 1056

Body/Pin=100mW, d=10mm/Area Scan (7x9x1): Measurement grid: dx=15mm, dy=15mm

Info: [Interpolated medium parameters used for SAR evaluation.](#)

Maximum value of SAR (measured) = 6.17 W/kg

Body/Pin=100mW, d=10mm/Zoom Scan (7x7x7)/Cube 0: Measurement grid: dx=5mm, dy=5mm, dz=5mm

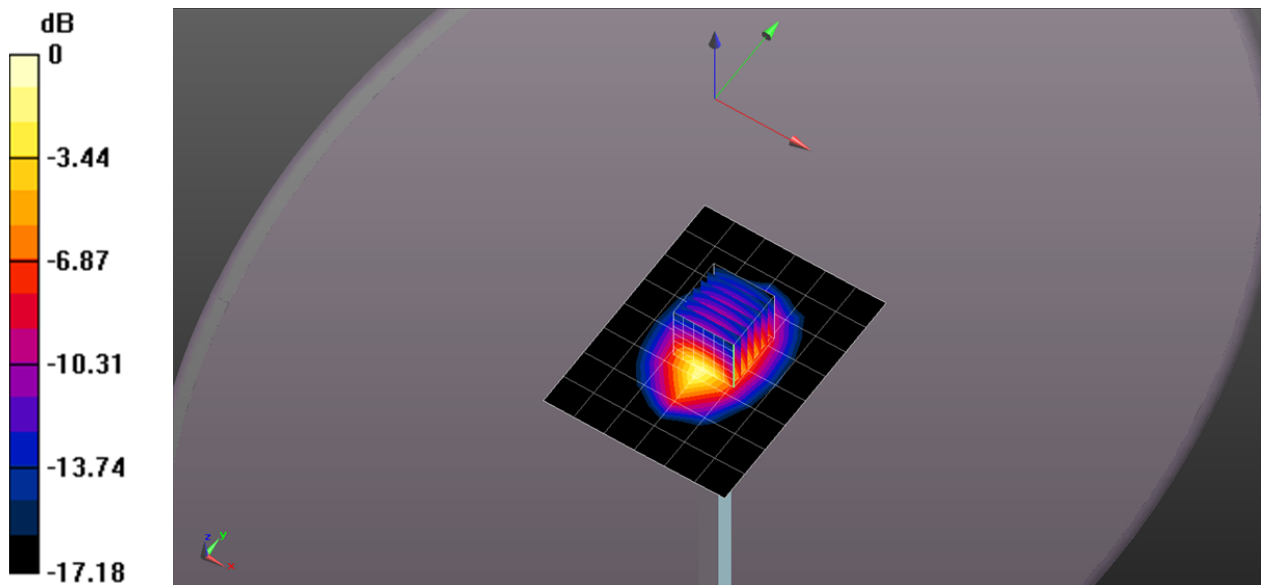
Reference Value = 65.411 V/m; Power Drift = -0.05 dB

Peak SAR (extrapolated) = 6.94 W/kg

SAR(1 g) = 3.86 W/kg; SAR(10 g) = 2.04 W/kg

Info: [Interpolated medium parameters used for SAR evaluation.](#)

Maximum value of SAR (measured) = 5.85 W/kg



0 dB = 5.85 W/kg = 7.67 dBW/kg

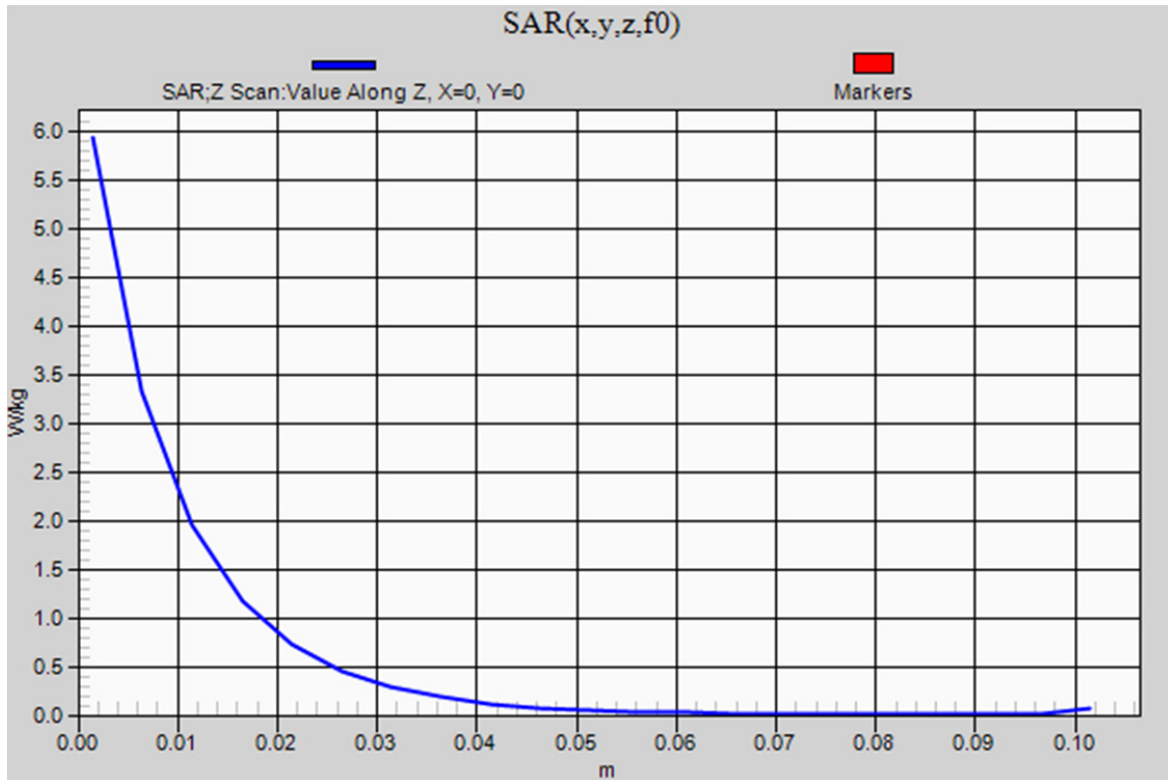
20130815_System Check_Diple1800v2 SN2d062

Frequency: 1800 MHz; Duty Cycle: 1:1

Body/Pin=100mW, d=10mm/Z Scan (1x1x21): Measurement grid: dx=20mm, dy=20mm, dz=5mm

Info: [Interpolated medium parameters used for SAR evaluation.](#)

Maximum value of SAR (measured) = 5.92 W/kg



20130815_System Check_Diple1900v2 SN5d056

Frequency: 1900 MHz; Duty Cycle: 1:1; Room Ambient Temperature: 24.0°C; Liquid Temperature: 23.5°C

Medium parameters used (interpolated): $f = 1900$ MHz; $\sigma = 1.503$ S/m; $\epsilon_r = 51.461$; $\rho = 1000$ kg/m³

DASY5 Configuration:

- Area Scan Setting - Find Secondary Maximum Within: 2.0 dB and with a peak SAR value greater than 0.0012W/kg
- Electronics: DAE4 Sn877; Calibrated: 2013/03/12
- Probe: EX3DV4 - SN3665; ConvF(7.75, 7.75, 7.75); Calibrated: 2013/05/07;
- Sensor-Surface: 1.4mm (Mechanical Surface Detection)
- Phantom: ELI 4.0; Type: QDOVA001BA; Serial: 1056

Body/Pin=100mW, d=10mm/Area Scan (7x9x1): Measurement grid: dx=15mm, dy=15mm

[Info: Interpolated medium parameters used for SAR evaluation.](#)

Maximum value of SAR (measured) = 6.07 W/kg

Body/Pin=100mW, d=10mm/Zoom Scan (7x7x7)/Cube 0: Measurement grid: dx=5mm, dy=5mm, dz=5mm

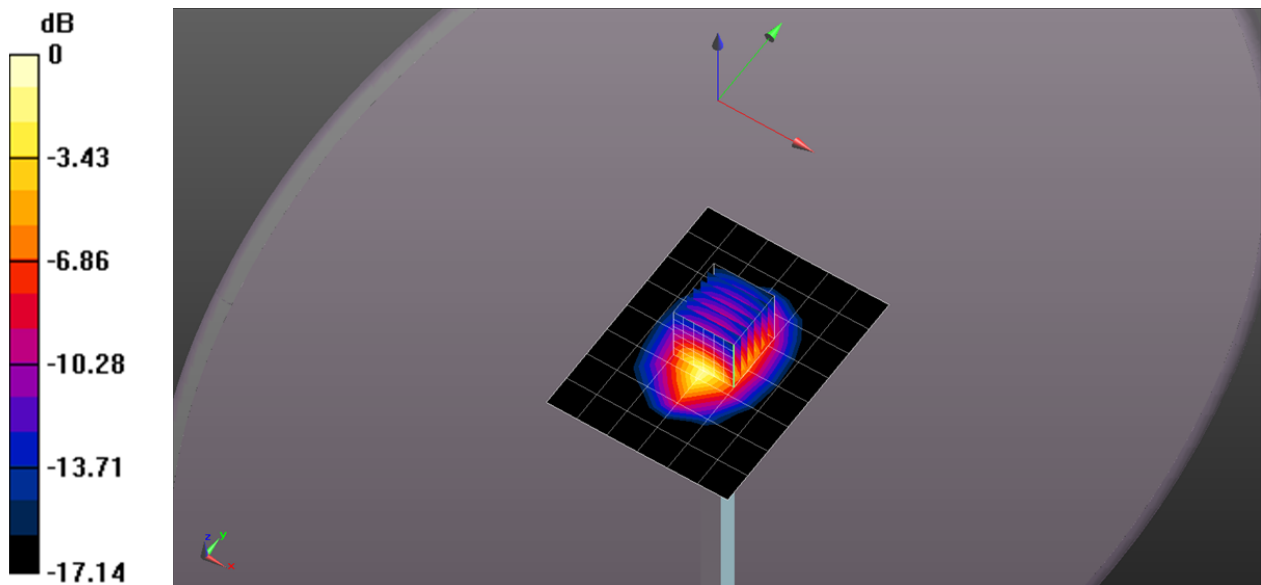
Reference Value = 65.854 V/m; Power Drift = 0.02 dB

Peak SAR (extrapolated) = 7.18 W/kg

SAR(1 g) = 3.99 W/kg; SAR(10 g) = 2.12 W/kg

[Info: Interpolated medium parameters used for SAR evaluation.](#)

Maximum value of SAR (measured) = 6.05 W/kg



0 dB = 6.05 W/kg = 7.82 dBW/kg

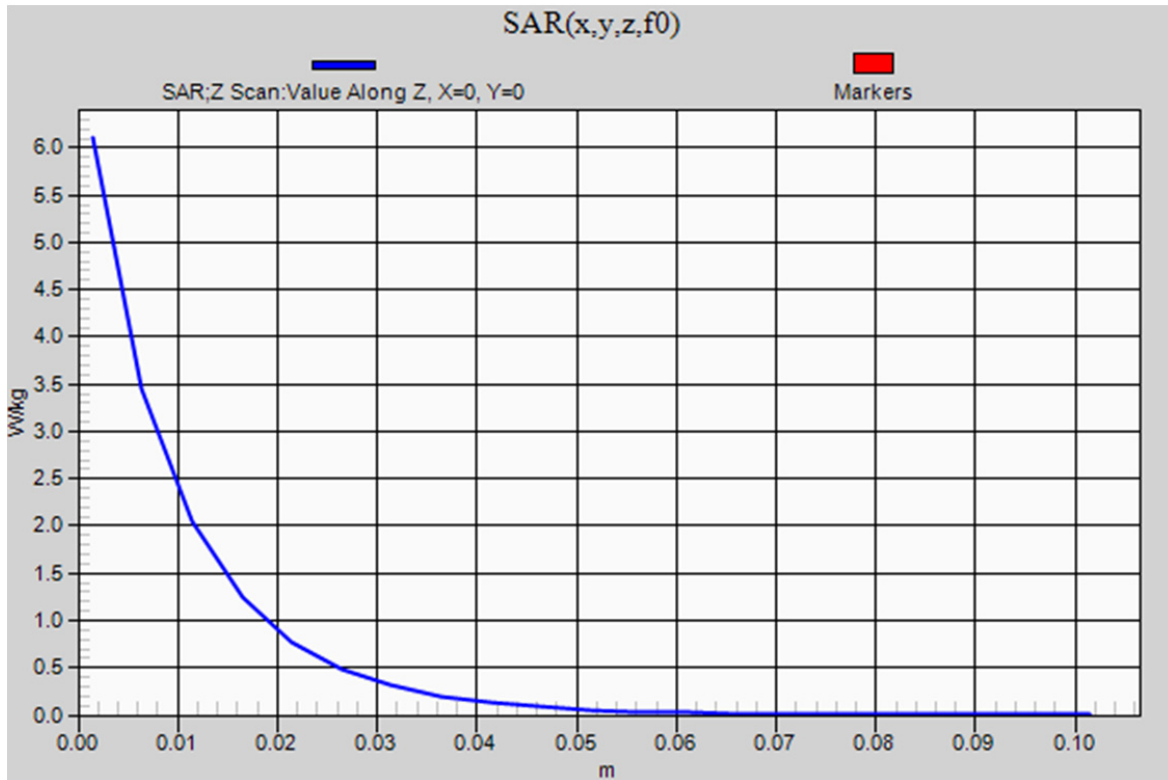
20130815_System Check_Diple1900v2 SN5d056

Frequency: 1900 MHz; Duty Cycle: 1:1

Body/Pin=100mW, d=10mm/Z Scan (1x1x21): Measurement grid: dx=20mm, dy=20mm, dz=5mm

[Info: Interpolated medium parameters used for SAR evaluation.](#)

Maximum value of SAR (measured) = 6.11 W/kg



20130816_System check_Diple835v2 SN4d092

Frequency: 850 MHz; Duty Cycle: 1:1; Room Ambient Temperature: 24.0°C; Liquid Temperature: 23.5°C

Medium parameters used (interpolated): $f = 850$ MHz; $\sigma = 0.992$ S/m; $\epsilon_r = 55.545$; $\rho = 1000$ kg/m³

DASY5 Configuration:

- Area Scan Setting - Find Secondary Maximum Within: 2.0 dB and with a peak SAR value greater than 0.0012W/kg
- Electronics: DAE4 Sn877; Calibrated: 2013/03/12
- Probe: EX3DV4 - SN3665; ConvF(9.82, 9.82, 9.82); Calibrated: 2013/05/07;
- Sensor-Surface: 1.4mm (Mechanical Surface Detection)
- Phantom: ELI 4.0; Type: QDOVA001BA; Serial: 1056

Body/Pin=100mW, d=15mm/Area Scan (8x13x1): Measurement grid: dx=15mm, dy=15mm

[Info: Interpolated medium parameters used for SAR evaluation.](#)

Maximum value of SAR (measured) = 1.14 W/kg

Body/Pin=100mW, d=15mm/Zoom Scan (7x7x7)/Cube 0: Measurement grid: dx=5mm, dy=5mm, dz=5mm

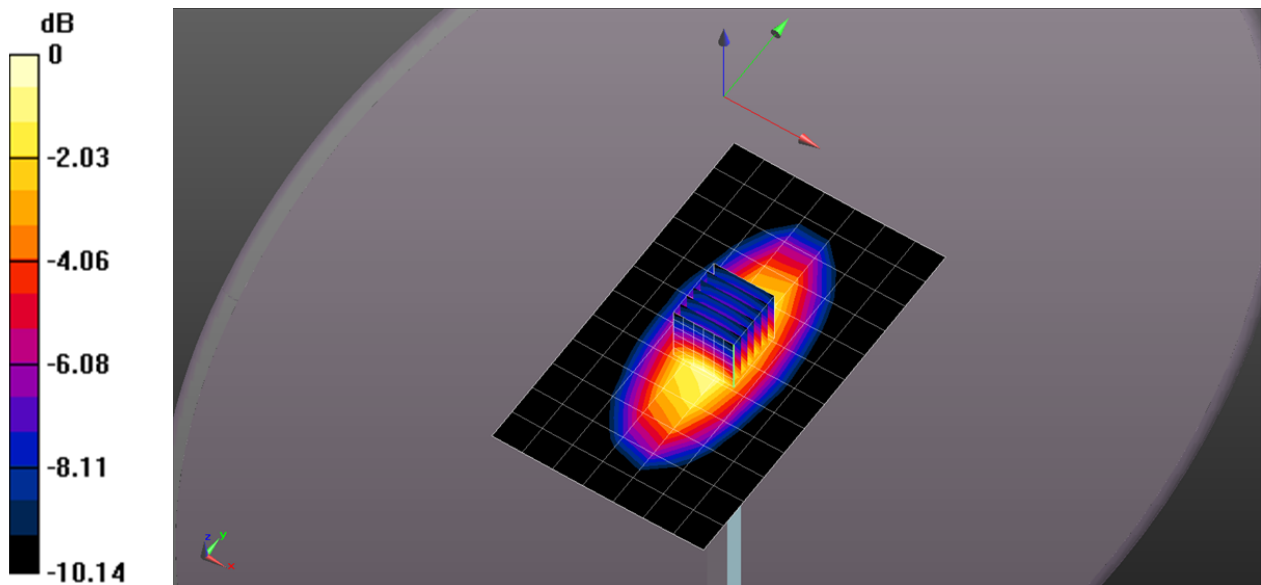
Reference Value = 37.584 V/m; Power Drift = -0.00 dB

Peak SAR (extrapolated) = 1.43 W/kg

SAR(1 g) = 0.957 W/kg; SAR(10 g) = 0.634 W/kg

[Info: Interpolated medium parameters used for SAR evaluation.](#)

Maximum value of SAR (measured) = 1.27 W/kg



0 dB = 1.27 W/kg = 1.04 dBW/kg

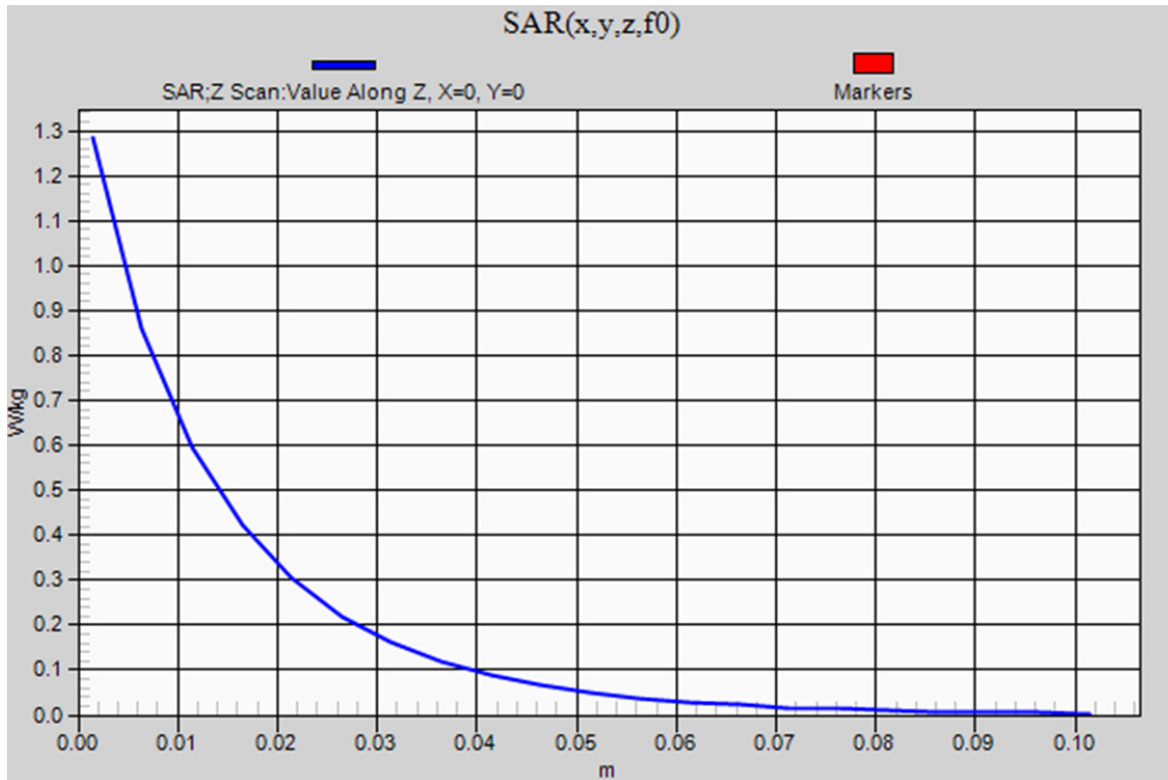
20130816_System check_Diple835v2 SN4d092

Frequency: 850 MHz; Duty Cycle: 1:1

Body/Pin=100mW, d=15mm/Z Scan (1x1x21): Measurement grid: dx=20mm, dy=20mm, dz=5mm

Info: [Interpolated medium parameters used for SAR evaluation.](#)

Maximum value of SAR (measured) = 1.28 W/kg



20130816_System check_Diple750v3 SN1020

Frequency: 750 MHz; Duty Cycle: 1:1; Room Ambient Temperature: 24.0°C; Liquid Temperature: 23.5°C

Medium parameters used (interpolated): $f = 750$ MHz; $\sigma = 0.968$ S/m; $\epsilon_r = 53.849$; $\rho = 1000$ kg/m³

DASY5 Configuration:

- Area Scan Setting - Find Secondary Maximum Within: 2.0 dB and with a peak SAR value greater than 0.0012W/kg
- Electronics: DAE4 Sn877; Calibrated: 2013/03/12
- Probe: EX3DV4 - SN3665; ConvF(9.92, 9.92, 9.92); Calibrated: 2013/05/07;
- Sensor-Surface: 1.4mm (Mechanical Surface Detection)
- Phantom: ELI 4.0; Type: QDOVA001BA; Serial: 1056

Body/Pin=100mW, d=15mm/Area Scan (7x15x1): Measurement grid: dx=15mm, dy=15mm

[Info: Interpolated medium parameters used for SAR evaluation.](#)

Maximum value of SAR (measured) = 1.17 W/kg

Body/Pin=100mW, d=15mm/Zoom Scan (7x7x7)/Cube 0: Measurement grid: dx=5mm, dy=5mm, dz=5mm

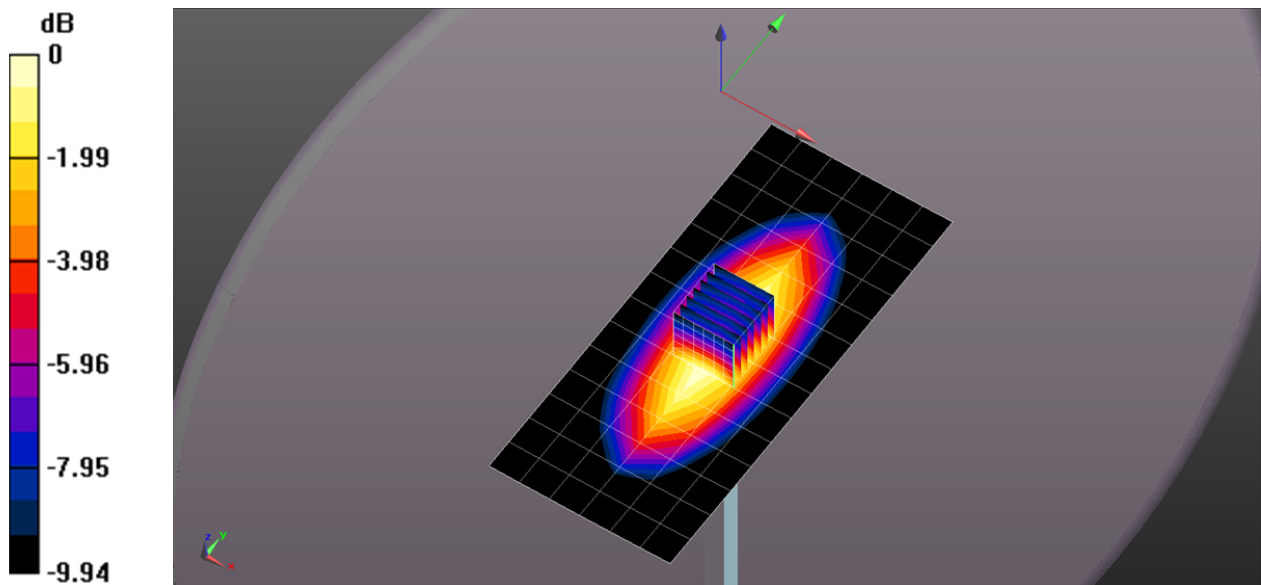
Reference Value = 36.746 V/m; Power Drift = -0.02 dB

Peak SAR (extrapolated) = 1.26 W/kg

SAR(1 g) = 0.833 W/kg; SAR(10 g) = 0.555 W/kg

[Info: Interpolated medium parameters used for SAR evaluation.](#)

Maximum value of SAR (measured) = 1.09 W/kg



0 dB = 1.09 W/kg = 0.37 dBW/kg

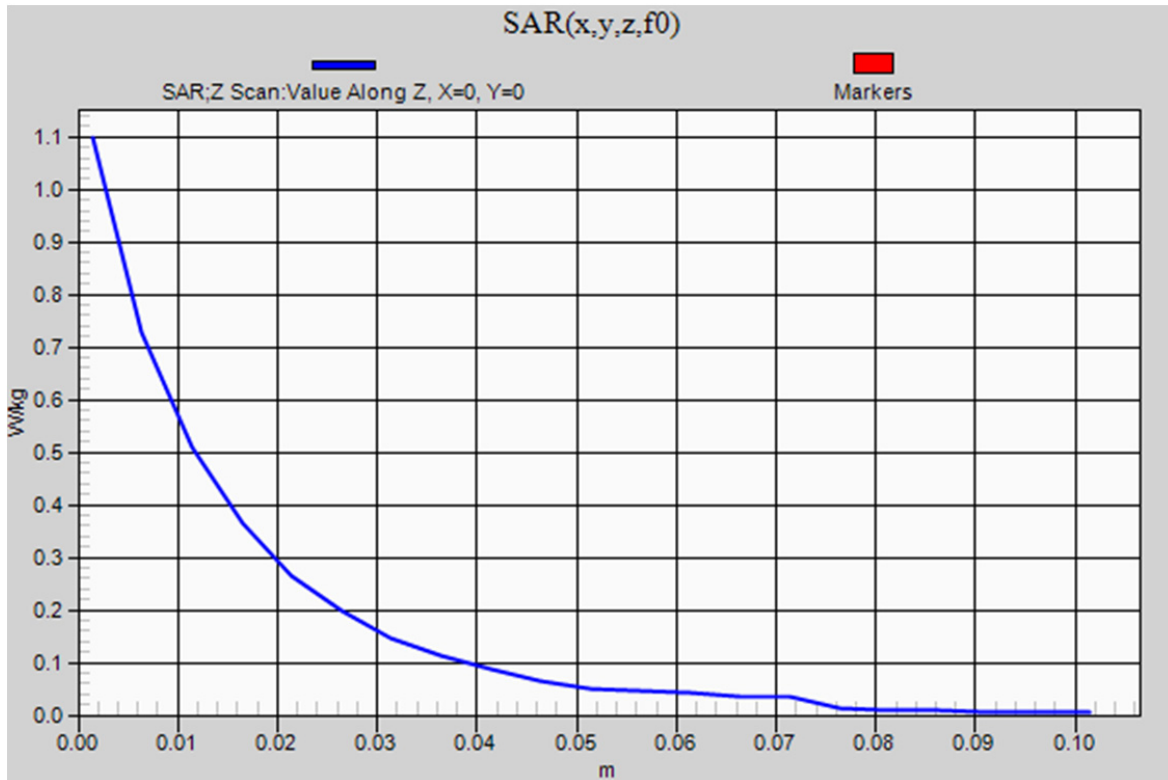
20130816_System check_Diple750v3 SN1020

Frequency: 750 MHz; Duty Cycle: 1:1

Body/Pin=100mW, d=15mm/Z Scan (1x1x21): Measurement grid: dx=20mm, dy=20mm, dz=5mm

Info: [Interpolated medium parameters used for SAR evaluation.](#)

Maximum value of SAR (measured) = 1.10 W/kg



20130819_System Check_Diple1800v2 SN2d062

Frequency: 1800 MHz; Duty Cycle: 1:1; Room Ambient Temperature: 24.0°C; Liquid Temperature: 23.5°C

Medium parameters used (interpolated): $f = 1800$ MHz; $\sigma = 1.535$ S/m; $\epsilon_r = 53.142$; $\rho = 1000$ kg/m³

DASY5 Configuration:

- Area Scan Setting - Find Secondary Maximum Within: 2.0 dB and with a peak SAR value greater than 0.0012W/kg
- Electronics: DAE4 Sn877; Calibrated: 2013/03/12
- Probe: EX3DV4 - SN3665; ConvF(8.06, 8.06, 8.06); Calibrated: 2013/05/07;
- Sensor-Surface: 1.4mm (Mechanical Surface Detection)
- Phantom: ELI 4.0; Type: QDOVA001BA; Serial: 1056

Body/Pin=100mW, d=10mm/Area Scan (7x9x1): Measurement grid: dx=15mm, dy=15mm

[Info: Interpolated medium parameters used for SAR evaluation.](#)

Maximum value of SAR (measured) = 6.05 W/kg

Body/Pin=100mW, d=10mm/Zoom Scan (7x7x7)/Cube 0: Measurement grid: dx=5mm, dy=5mm, dz=5mm

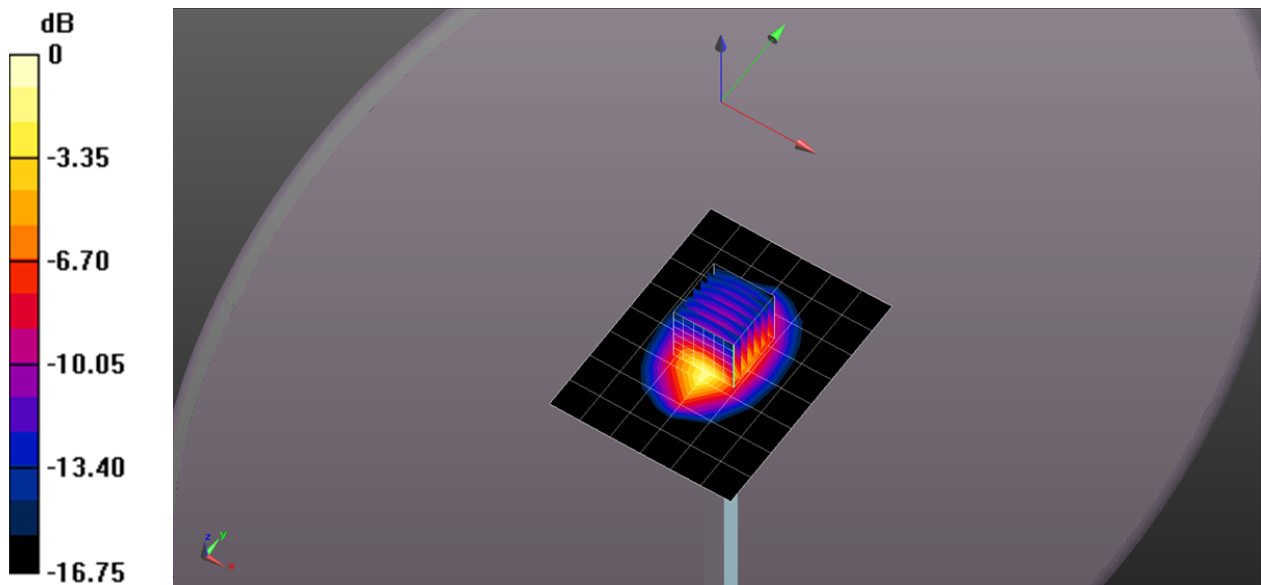
Reference Value = 65.690 V/m; Power Drift = 0.02 dB

Peak SAR (extrapolated) = 7.06 W/kg

SAR(1 g) = 3.91 W/kg; SAR(10 g) = 2.07 W/kg

[Info: Interpolated medium parameters used for SAR evaluation.](#)

Maximum value of SAR (measured) = 5.95 W/kg



0 dB = 5.95 W/kg = 7.75 dBW/kg

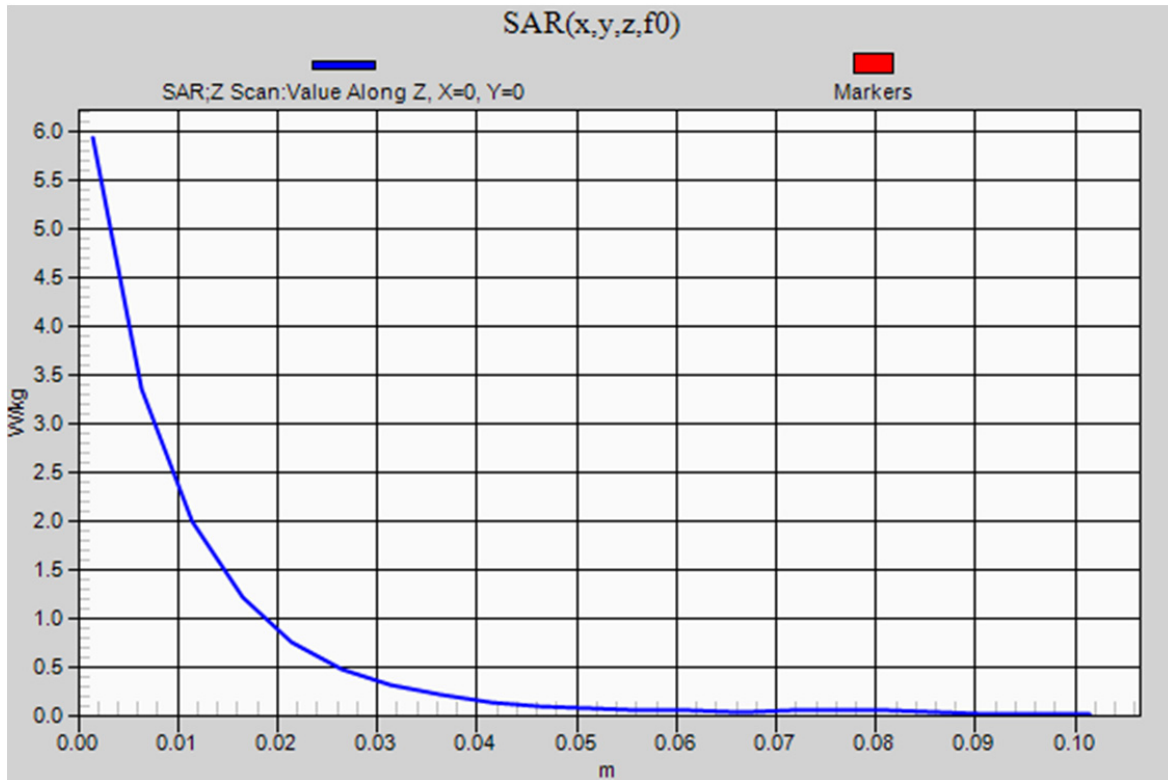
20130819_System Check_Diple1800v2 SN2d062

Frequency: 1800 MHz; Duty Cycle: 1:1

Body/Pin=100mW, d=10mm/Z Scan (1x1x21): Measurement grid: dx=20mm, dy=20mm, dz=5mm

Info: [Interpolated medium parameters used for SAR evaluation.](#)

Maximum value of SAR (measured) = 5.94 W/kg



20130820_System Check_Diple1900v2 SN5d056

Frequency: 1900 MHz; Duty Cycle: 1:1; Room Ambient Temperature: 24.0°C; Liquid Temperature: 23.5°C

Medium parameters used (interpolated): $f = 1900$ MHz; $\sigma = 1.504$ S/m; $\epsilon_r = 51.505$; $\rho = 1000$ kg/m³

DASY5 Configuration:

- Area Scan Setting - Find Secondary Maximum Within: 2.0 dB and with a peak SAR value greater than 0.0012W/kg
- Electronics: DAE4 Sn877; Calibrated: 2013/03/12
- Probe: EX3DV4 - SN3665; ConvF(7.75, 7.75, 7.75); Calibrated: 2013/05/07;
- Sensor-Surface: 1.4mm (Mechanical Surface Detection)
- Phantom: ELI 4.0; Type: QDOVA001BA; Serial: 1056

Body/Pin=100mW, d=10mm/Area Scan (7x9x1): Measurement grid: dx=15mm, dy=15mm

[Info: Interpolated medium parameters used for SAR evaluation.](#)

Maximum value of SAR (measured) = 6.06 W/kg

Body/Pin=100mW, d=10mm/Zoom Scan (7x7x7)/Cube 0: Measurement grid: dx=5mm, dy=5mm, dz=5mm

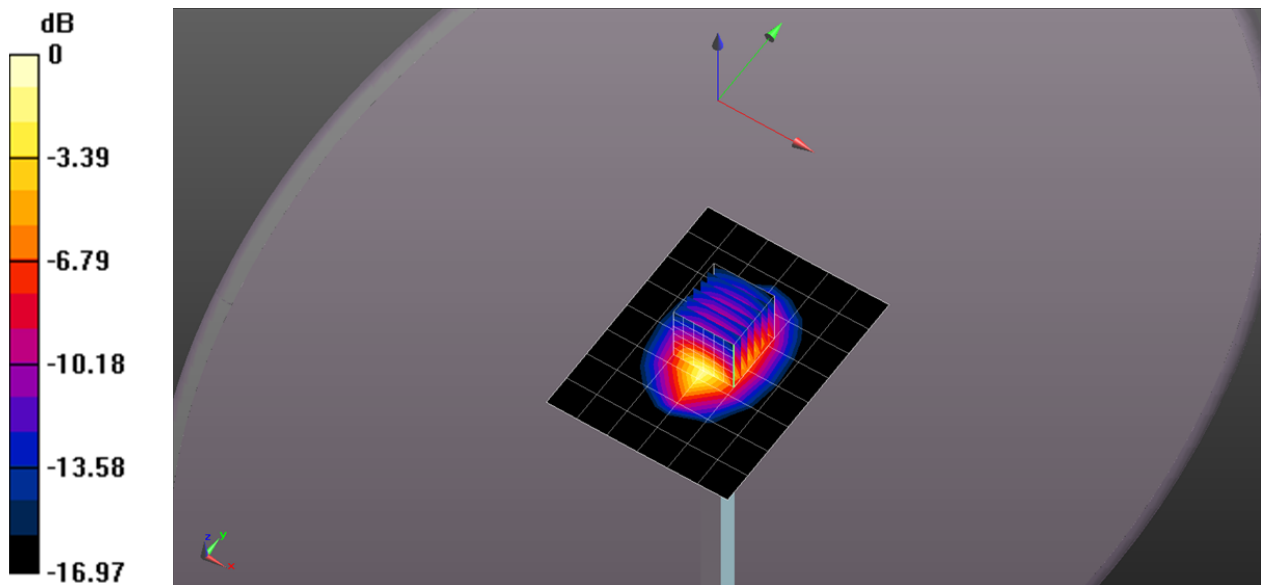
Reference Value = 65.690 V/m; Power Drift = 0.01 dB

Peak SAR (extrapolated) = 7.25 W/kg

SAR(1 g) = 4.04 W/kg; SAR(10 g) = 2.14 W/kg

[Info: Interpolated medium parameters used for SAR evaluation.](#)

Maximum value of SAR (measured) = 6.11 W/kg



0 dB = 6.11 W/kg = 7.86 dBW/kg

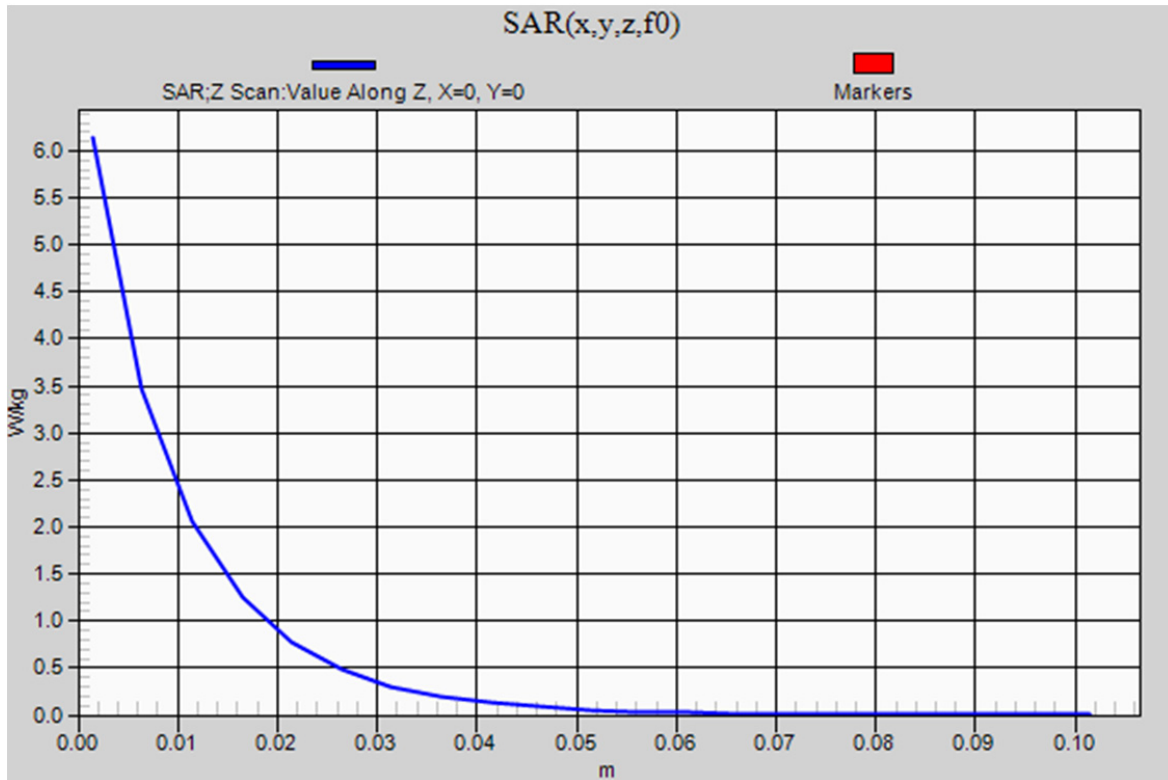
20130820_System Check_Dipole1900v2 SN5d056

Frequency: 1900 MHz; Duty Cycle: 1:1

Body/Pin=100mW, d=10mm/Z Scan (1x1x21): Measurement grid: dx=20mm, dy=20mm, dz=5mm

Info: [Interpolated medium parameters used for SAR evaluation.](#)

Maximum value of SAR (measured) = 6.14 W/kg



20130829_System check_Diple2450v2 SN728

Frequency: 2450 MHz; Duty Cycle: 1:1; Room Ambient Temperature: 24.0°C; Liquid Temperature: 23.5°C

Medium parameters used (interpolated): $f = 2450$ MHz; $\sigma = 1.954$ S/m; $\epsilon_r = 50.488$; $\rho = 1000$ kg/m³

DASY5 Configuration:

- Area Scan Setting - Find Secondary Maximum Within: 2.0 dB and with a peak SAR value greater than 0.0012W/kg
- Electronics: DAE4 Sn877; Calibrated: 2013/03/12
- Probe: EX3DV4 - SN3665; ConvF(7.4, 7.4, 7.4); Calibrated: 2013/05/07;
- Sensor-Surface: 1.4mm (Mechanical Surface Detection)
- Phantom: ELI 4.0; Type: QDOVA001BA; Serial: 1056

Body/Pin=100mW, d=10mm/Area Scan (7x9x1): Measurement grid: dx=15mm, dy=15mm

[Info: Interpolated medium parameters used for SAR evaluation.](#)

Maximum value of SAR (measured) = 8.49 W/kg

Body/Pin=100mW, d=10mm/Zoom Scan (7x7x7)/Cube 0: Measurement grid: dx=5mm, dy=5mm, dz=5mm

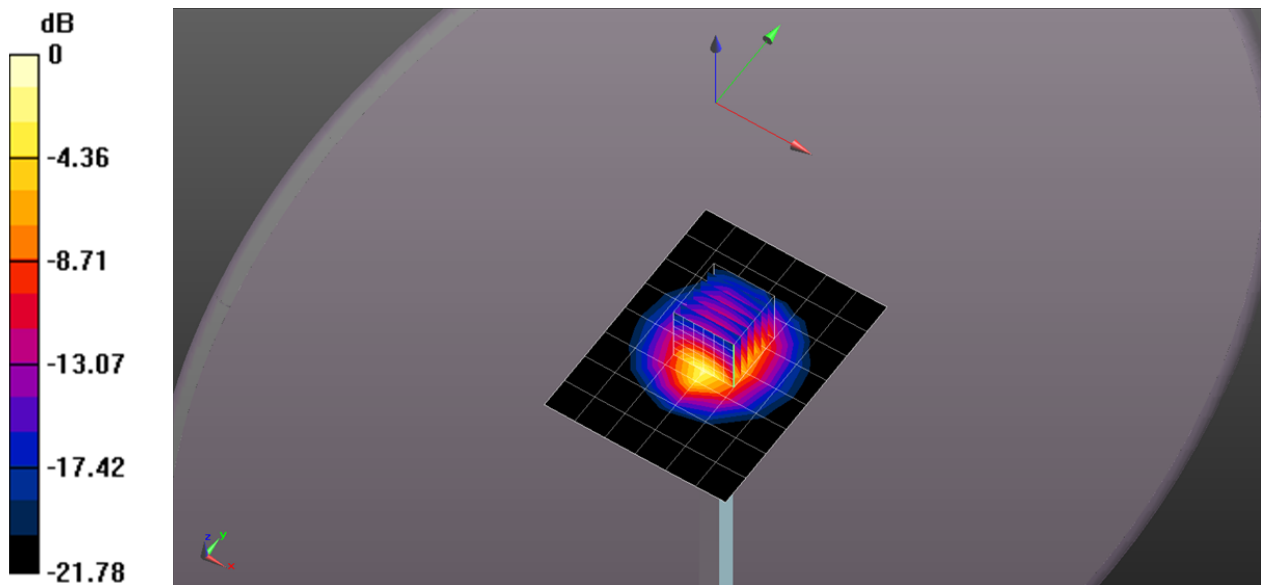
Reference Value = 67.275 V/m; Power Drift = -0.02 dB

Peak SAR (extrapolated) = 10.8 W/kg

SAR(1 g) = 5.22 W/kg; SAR(10 g) = 2.45 W/kg

[Info: Interpolated medium parameters used for SAR evaluation.](#)

Maximum value of SAR (measured) = 8.59 W/kg



0 dB = 8.59 W/kg = 9.34 dBW/kg

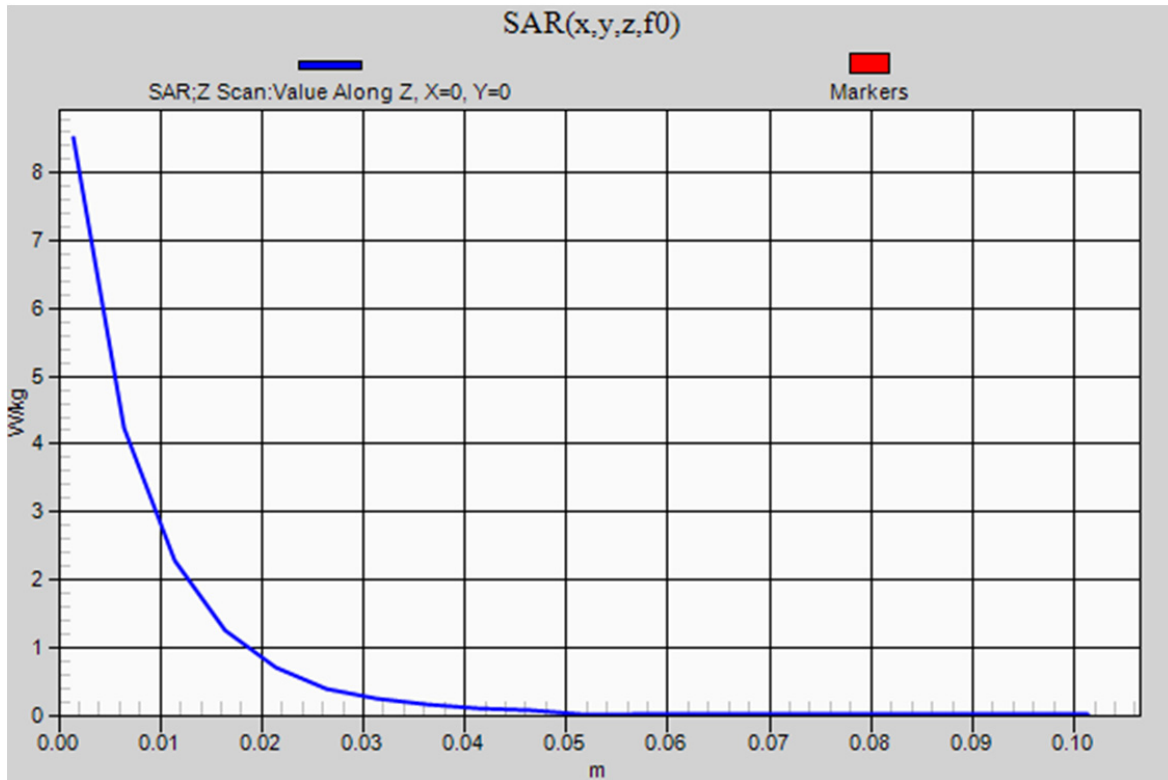
20130829_System check_Diple2450v2 SN728

Frequency: 2450 MHz; Duty Cycle: 1:1

Body/Pin=100mW, d=10mm/Z Scan (1x1x21): Measurement grid: dx=20mm, dy=20mm, dz=5mm

[Info: Interpolated medium parameters used for SAR evaluation.](#)

Maximum value of SAR (measured) = 8.52 W/kg



20130830_System check_Diple5GHzv2 SN1004

Frequency: 5200 MHz; Duty Cycle: 1:1; Room Ambient Temperature: 24.5°C; Liquid Temperature: 24.0°C

Medium parameters used (interpolated): $f = 5200$ MHz; $\sigma = 5.111$ S/m; $\epsilon_r = 49.066$; $\rho = 1000$ kg/m³

DASY5 Configuration:

- Area Scan Setting - Find Secondary Maximum Within: 2.0 dB and with a peak SAR value greater than 0.0012W/kg
- Electronics: DAE4 Sn877; Calibrated: 2013/03/12
- Probe: EX3DV4 - SN3665; ConvF(4.44, 4.44, 4.44); Calibrated: 2013/05/07;
- Sensor-Surface: 1.4mm (Mechanical Surface Detection)
- Phantom: ELI 4.0; Type: QDOVA001BA; Serial: 1056

Body/5200MHz,Pin=100mW,d=10mm/Area Scan (7x7x1): Measurement grid: dx=10mm, dy=10mm

[Info: Interpolated medium parameters used for SAR evaluation.](#)

Maximum value of SAR (measured) = 18.9 W/kg

Body/5200MHz,Pin=100mW,d=10mm/Zoom Scan (7x7x6)/Cube 0: Measurement grid: dx=4mm, dy=4mm, dz=1.4mm

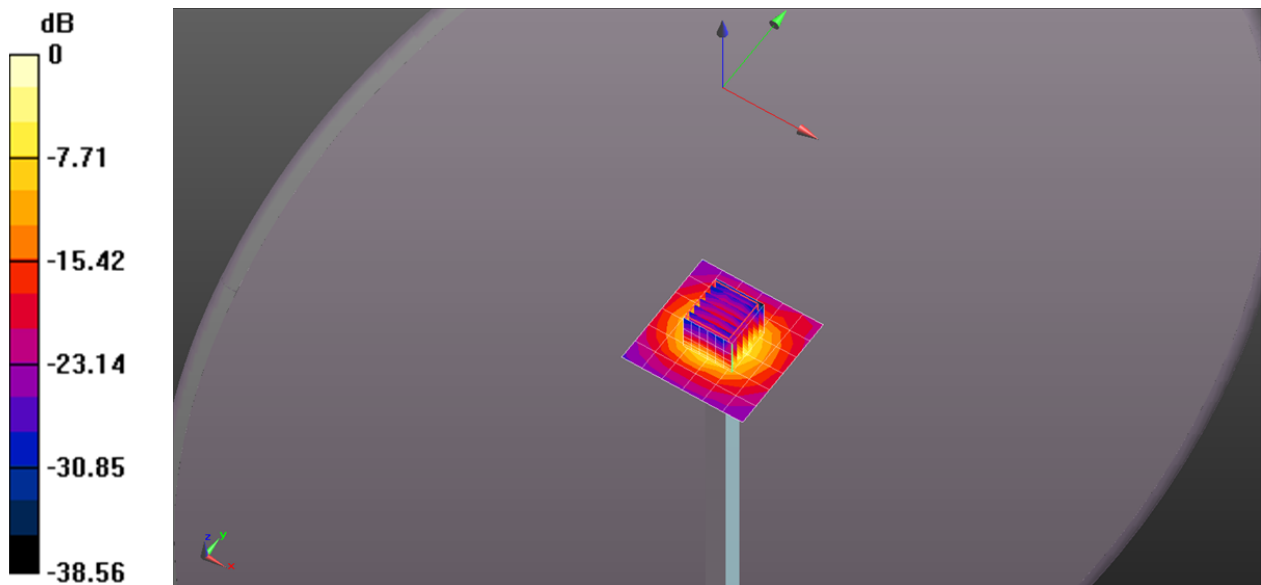
Reference Value = 42.483 V/m; Power Drift = -0.07 dB

Peak SAR (extrapolated) = 29.6 W/kg

SAR(1 g) = 7.4 W/kg; SAR(10 g) = 2.1 W/kg

[Info: Interpolated medium parameters used for SAR evaluation.](#)

Maximum value of SAR (measured) = 18.7 W/kg



0 dB = 18.7 W/kg = 12.72 dBW/kg

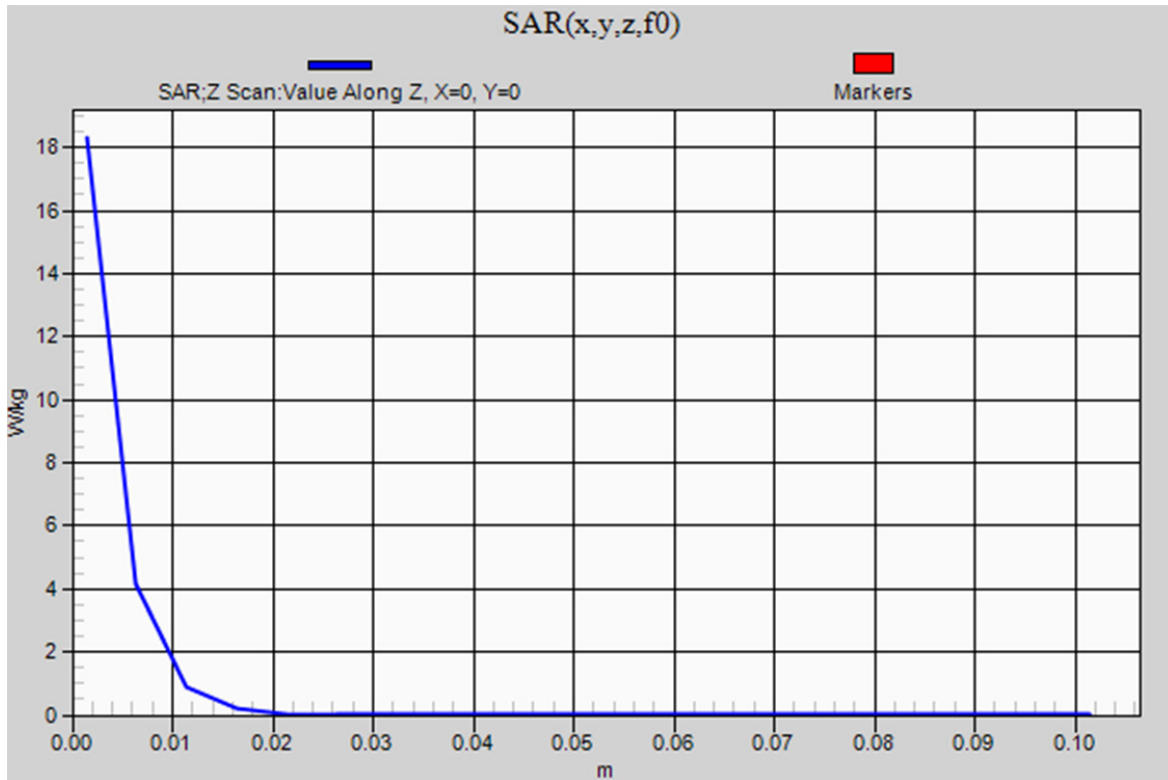
20130830_System check_Diple5GHzv2 SN1004

Frequency: 5200 MHz; Duty Cycle: 1:1

Body/5200MHz,Pin=100mW,d=10mm/Z Scan (1x1x21): Measurement grid: dx=20mm, dy=20mm, dz=5mm

[Info: Interpolated medium parameters used for SAR evaluation.](#)

Maximum value of SAR (measured) = 18.3 W/kg



20130830_System check_Diple5GHzv2 SN1004

Frequency: 5300 MHz; Duty Cycle: 1:1; Room Ambient Temperature: 24.5°C; Liquid Temperature: 24.0°C

Medium parameters used: $f = 5300.2$ MHz; $\sigma = 5.237$ S/m; $\epsilon_r = 48.939$; $\rho = 1000$ kg/m³

DASY5 Configuration:

- Area Scan Setting - Find Secondary Maximum Within: 2.0 dB and with a peak SAR value greater than 0.0012W/kg
- Electronics: DAE4 Sn877; Calibrated: 2013/03/12
- Probe: EX3DV4 - SN3665; ConvF(4.27, 4.27, 4.27); Calibrated: 2013/05/07;
- Sensor-Surface: 1.4mm (Mechanical Surface Detection (Locations From Previous Scan Used)), Sensor-Surface: 1.4mm (Mechanical Surface Detection)
- Phantom: ELI 4.0; Type: QDOVA001BA; Serial: 1056

Body/5300MHz,Pin=100mW,d=10mm/Area Scan (7x7x1): Measurement grid: dx=10mm, dy=10mm

Maximum value of SAR (measured) = 18.1 W/kg

Body/5300MHz,Pin=100mW,d=10mm/Zoom Scan (7x7x6)/Cube 0: Measurement grid: dx=4mm, dy=4mm, dz=1.4mm

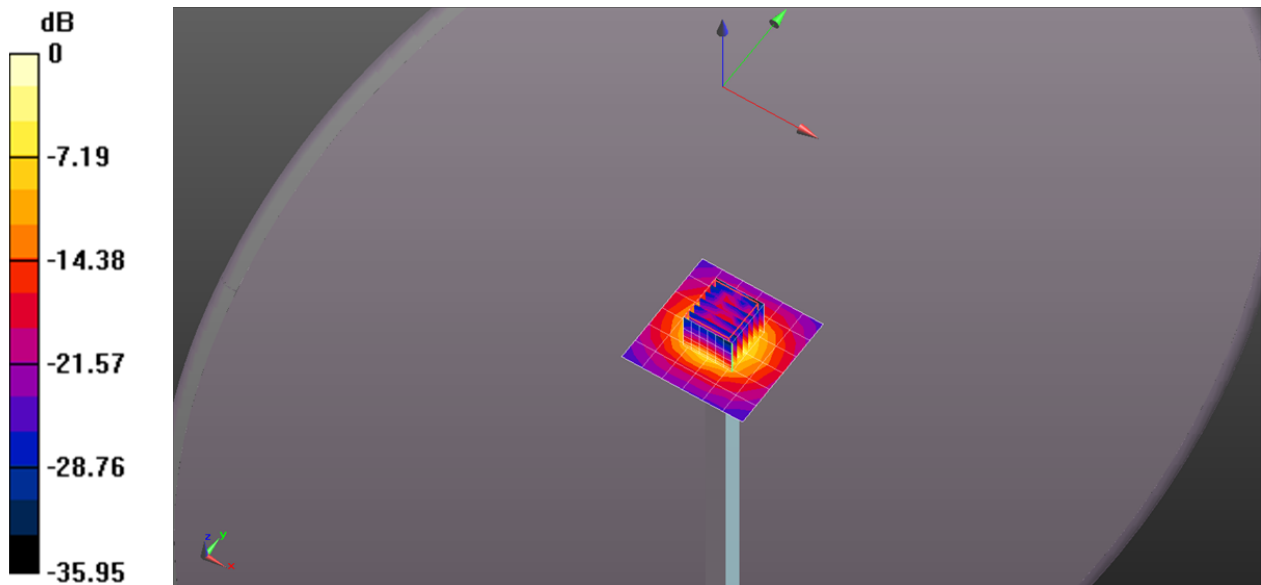
Reference Value = 40.281 V/m; Power Drift = 0.05 dB

Peak SAR (extrapolated) = 30.6 W/kg

Peak SAR (extrapolated) = 30.6 W/kg

SAR(1 g) = 7.3 W/kg; SAR(10 g) = 2.07 W/kg

Maximum value of SAR (measured) = 18.6 W/kg



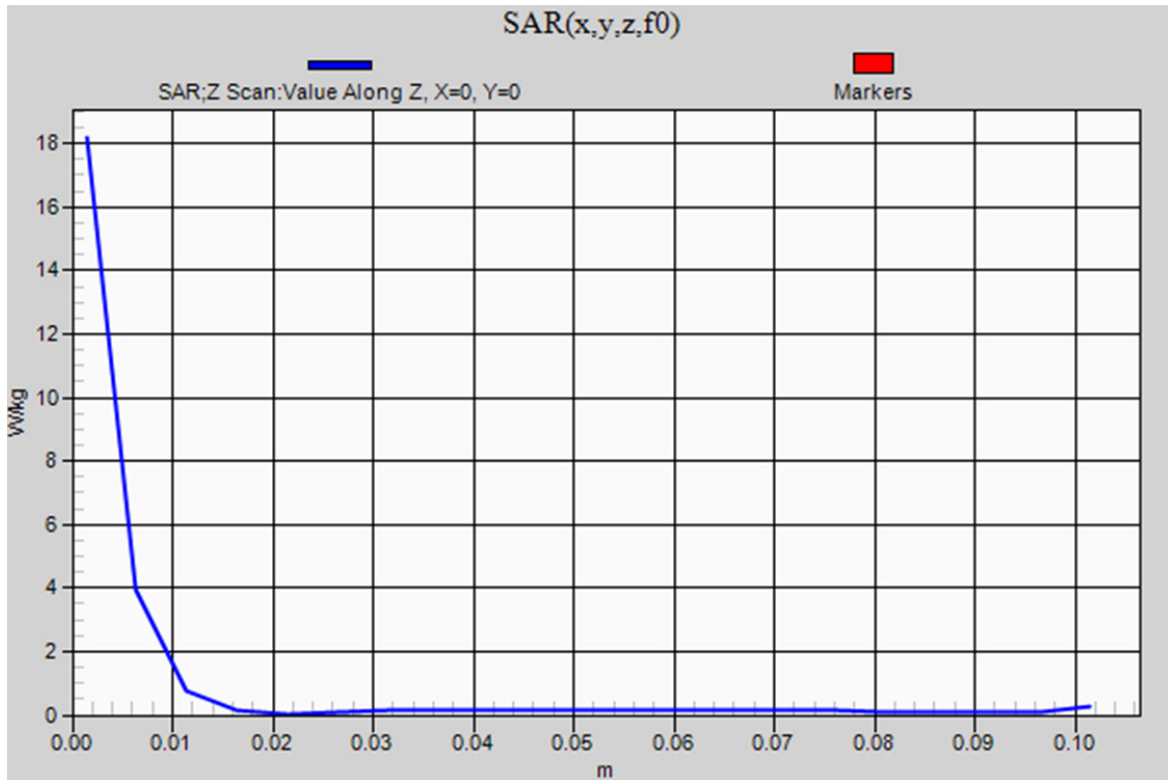
0 dB = 18.6 W/kg = 12.70 dBW/kg

20130830_System check_Diple5GHzv2 SN1004

Frequency: 5300 MHz; Duty Cycle: 1:1

Body/5300MHz,Pin=100mW,d=10mm/Z Scan (1x1x21): Measurement grid: dx=20mm, dy=20mm, dz=5mm

Maximum value of SAR (measured) = 18.2 W/kg



20130902_System check_Diple5GHzv2 SN1004

Frequency: 5600 MHz; Duty Cycle: 1:1; Room Ambient Temperature: 24.5°C; Liquid Temperature: 24.0°C

Medium parameters used: $f = 5600.5$ MHz; $\sigma = 5.745$ S/m; $\epsilon_r = 48.858$; $\rho = 1000$ kg/m³

DASY5 Configuration:

- Area Scan Setting - Find Secondary Maximum Within: 2.0 dB and with a peak SAR value greater than 0.0012W/kg
- Electronics: DAE4 Sn877; Calibrated: 2013/03/12
- Probe: EX3DV4 - SN3665; ConvF(4.07, 4.07, 4.07); Calibrated: 2013/05/07;
- Sensor-Surface: 1.4mm (Mechanical Surface Detection)
- Phantom: ELI 4.0; Type: QDOVA001BA; Serial: 1056

Body/5600MHz,Pin=100mW,d=10mm/Area Scan (7x7x1): Measurement grid: dx=10mm, dy=10mm

Maximum value of SAR (measured) = 18.3 W/kg

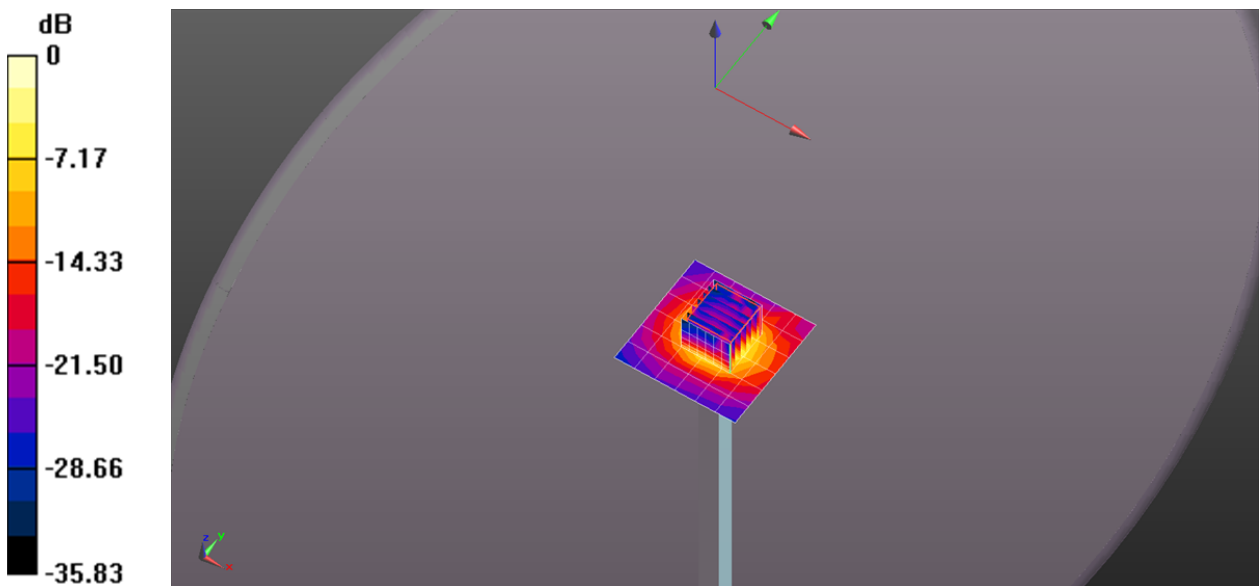
Body/5600MHz,Pin=100mW,d=10mm/Zoom Scan (7x7x6)/Cube 0: Measurement grid: dx=4mm, dy=4mm, dz=1.4mm

Reference Value = 36.172 V/m; Power Drift = -0.08 dB

Peak SAR (extrapolated) = 38.8 W/kg

SAR(1 g) = 7.73 W/kg; SAR(10 g) = 2.17 W/kg

Maximum value of SAR (measured) = 20.5 W/kg



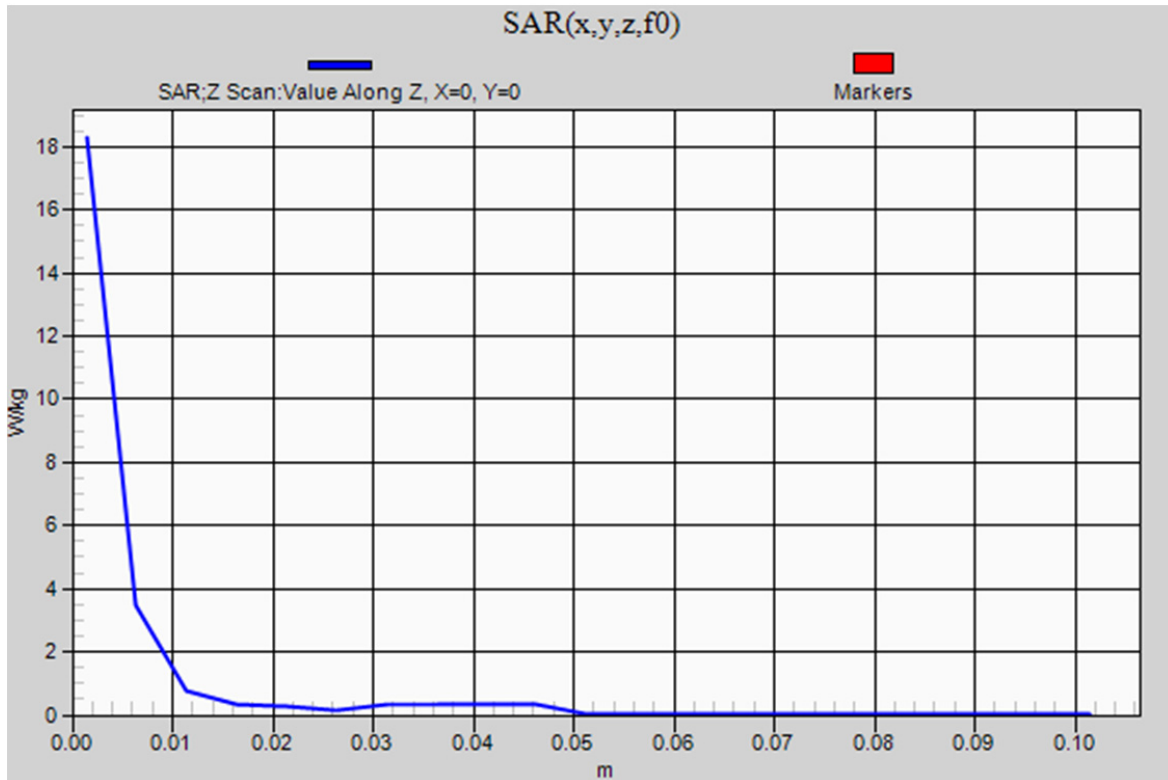
0 dB = 20.5 W/kg = 13.12 dBW/kg

20130902_System check_Diple5GHzv2 SN1004

Frequency: 5600 MHz; Duty Cycle: 1:1

Body/5600MHz,Pin=100mW,d=10mm/Z Scan (1x1x21): Measurement grid: dx=20mm, dy=20mm, dz=5mm

Maximum value of SAR (measured) = 18.3 W/kg



20130903_System check_Diple5GHzv2 SN1004

Frequency: 5600 MHz; Duty Cycle: 1:1; Room Ambient Temperature: 24.5°C; Liquid Temperature: 24.0°C

Medium parameters used: $f = 5600.5$ MHz; $\sigma = 5.941$ S/m; $\epsilon_r = 47.604$; $\rho = 1000$ kg/m³

DASY5 Configuration:

- Area Scan Setting - Find Secondary Maximum Within: 2.0 dB and with a peak SAR value greater than 0.0012W/kg
- Electronics: DAE4 Sn877; Calibrated: 2013/03/12
- Probe: EX3DV4 - SN3665; ConvF(4.07, 4.07, 4.07); Calibrated: 2013/05/07;
- Sensor-Surface: 1.4mm (Mechanical Surface Detection)
- Phantom: ELI 4.0; Type: QDOVA001BA; Serial: 1056

Body/5600MHz,Pin=100mW,d=10mm/Area Scan (7x7x1): Measurement grid: dx=10mm, dy=10mm

Maximum value of SAR (measured) = 20.0 W/kg

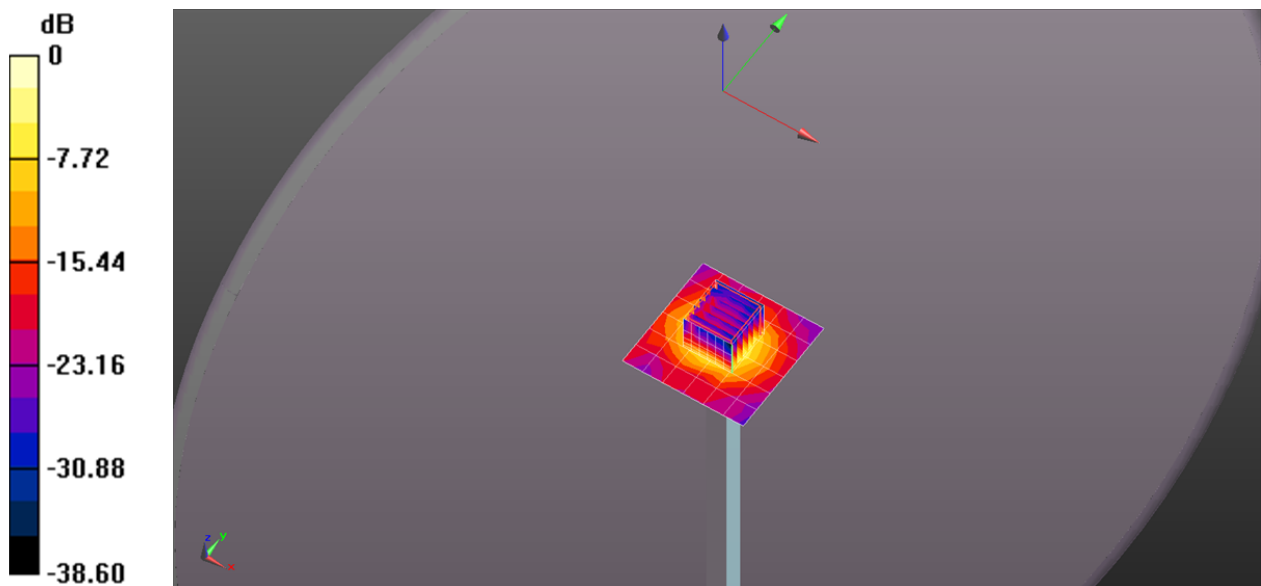
Body/5600MHz,Pin=100mW,d=10mm/Zoom Scan (7x7x6)/Cube 0: Measurement grid: dx=4mm, dy=4mm, dz=1.4mm

Reference Value = 37.887 V/m; Power Drift = -0.02 dB

Peak SAR (extrapolated) = 39.5 W/kg

SAR(1 g) = 8.11 W/kg; SAR(10 g) = 2.28 W/kg

Maximum value of SAR (measured) = 21.7 W/kg



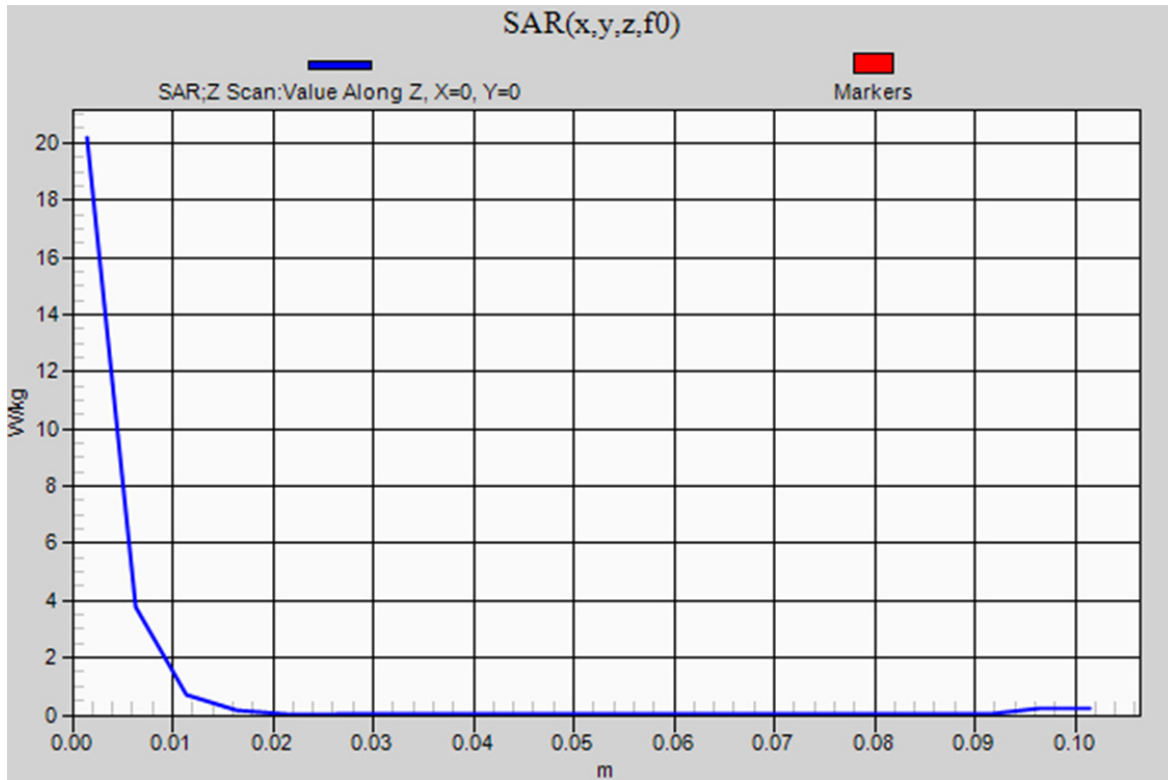
0 dB = 21.7 W/kg = 13.36 dBW/kg

20130903_System check_Diple5GHzv2 SN1004

Frequency: 5600 MHz; Duty Cycle: 1:1

Body/5600MHz,Pin=100mW,d=10mm/Z Scan (1x1x21): Measurement grid: dx=20mm, dy=20mm, dz=5mm

Maximum value of SAR (measured) = 20.2 W/kg



20130904_System check_Diple5GHzv2 SN1004

Frequency: 5800 MHz; Duty Cycle: 1:1; Room Ambient Temperature: 24.5°C; Liquid Temperature: 24.0°C

Medium parameters used (interpolated): $f = 5800$ MHz; $\sigma = 6.186$ S/m; $\epsilon_r = 47.231$; $\rho = 1000$ kg/m³

DASY5 Configuration:

- Area Scan Setting - Find Secondary Maximum Within: 2.0 dB and with a peak SAR value greater than 0.0012W/kg
- Electronics: DAE4 Sn877; Calibrated: 2013/03/12
- Probe: EX3DV4 - SN3665; ConvF(4.38, 4.38, 4.38); Calibrated: 2013/05/07;
- Sensor-Surface: 1.4mm (Mechanical Surface Detection)
- Phantom: ELI 4.0; Type: QDOVA001BA; Serial: 1056

Body/5800MHz,Pin=100mW,d=10mm/Area Scan (7x7x1): Measurement grid: dx=10mm, dy=10mm

[Info: Interpolated medium parameters used for SAR evaluation.](#)

Maximum value of SAR (measured) = 16.4 W/kg

Body/5800MHz,Pin=100mW,d=10mm/Zoom Scan (7x7x6)/Cube 0: Measurement grid: dx=4mm, dy=4mm, dz=1.4mm

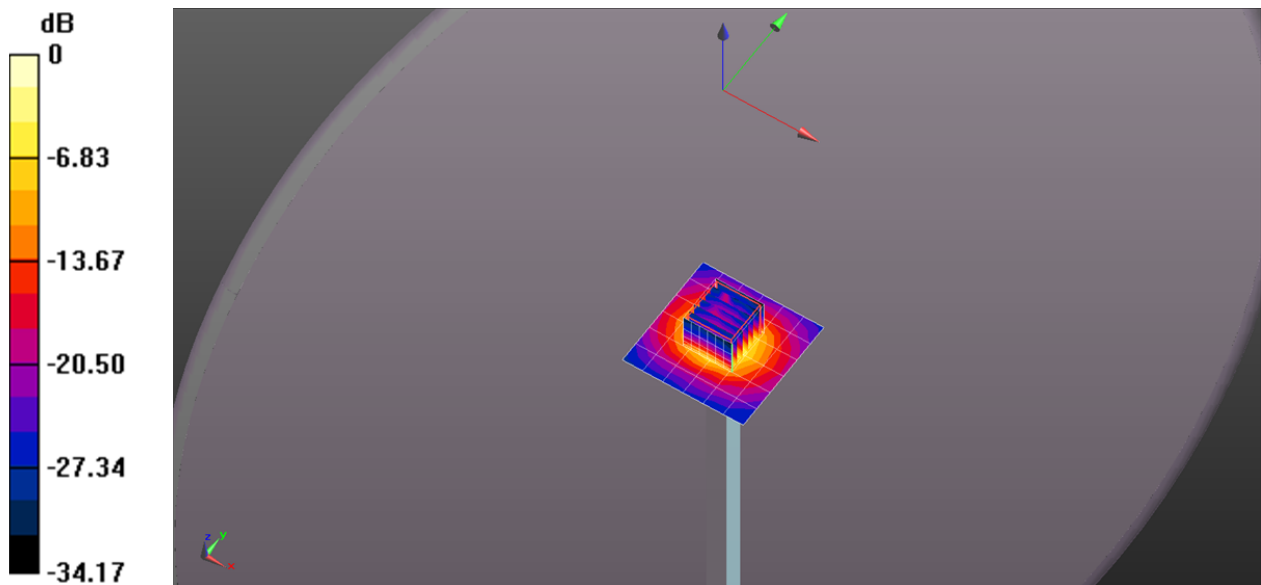
Reference Value = 34.208 V/m; Power Drift = 0.06 dB

Peak SAR (extrapolated) = 33.2 W/kg

SAR(1 g) = 7.21 W/kg; SAR(10 g) = 2.04 W/kg

[Info: Interpolated medium parameters used for SAR evaluation.](#)

Maximum value of SAR (measured) = 19.1 W/kg



0 dB = 19.1 W/kg = 12.81 dBW/kg

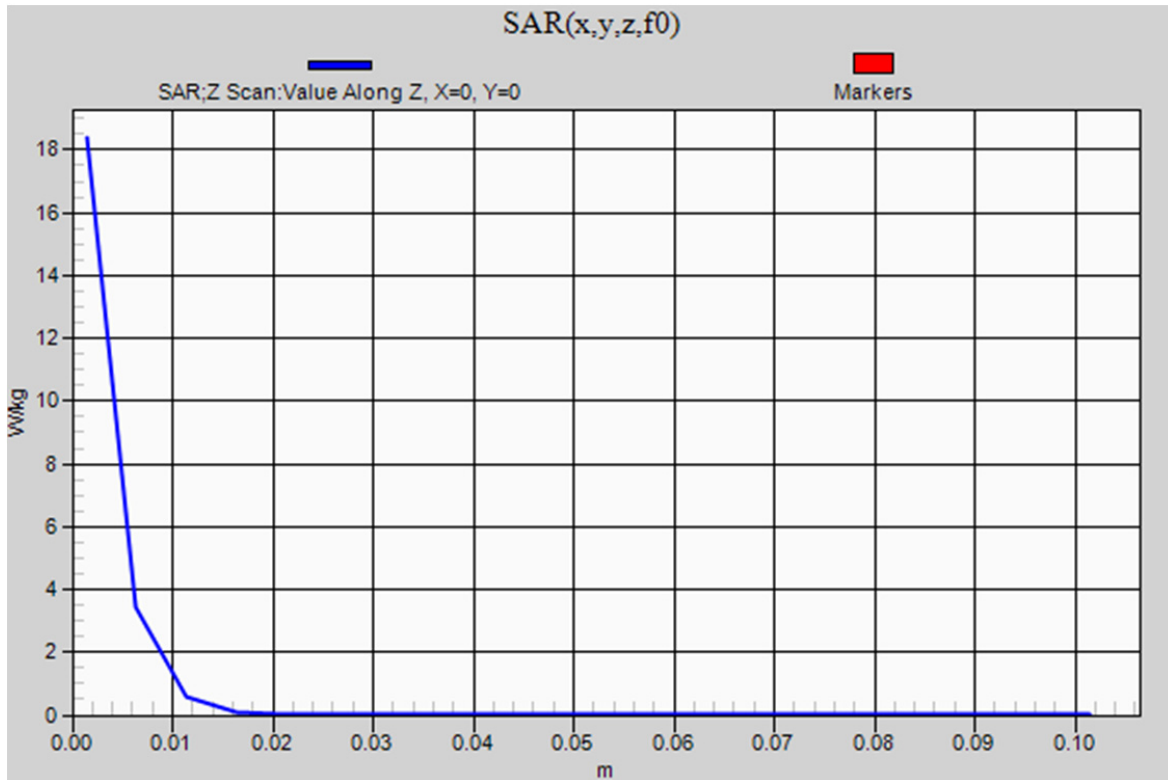
20130904_System check_Diple5GHzv2 SN1004

Frequency: 5800 MHz; Duty Cycle: 1:1

Body/5800MHz,Pin=100mW,d=10mm/Z Scan (1x1x21): Measurement grid: dx=20mm, dy=20mm, dz=5mm

[Info: Interpolated medium parameters used for SAR evaluation.](#)

Maximum value of SAR (measured) = 18.4 W/kg



20130905_System check_Diple5GHzv2 SN1004

Frequency: 5800 MHz; Duty Cycle: 1:1; Room Ambient Temperature: 24.5°C; Liquid Temperature: 24.0°C

Medium parameters used (interpolated): $f = 5800$ MHz; $\sigma = 5.906$ S/m; $\epsilon_r = 47.714$; $\rho = 1000$ kg/m³

DASY5 Configuration:

- Area Scan Setting - Find Secondary Maximum Within: 2.0 dB and with a peak SAR value greater than 0.0012W/kg
- Electronics: DAE4 Sn877; Calibrated: 2013/03/12
- Probe: EX3DV4 - SN3665; ConvF(4.38, 4.38, 4.38); Calibrated: 2013/05/07;
- Sensor-Surface: 1.4mm (Mechanical Surface Detection)
- Phantom: ELI 4.0; Type: QDOVA001BA; Serial: 1056

Body/5800MHz,Pin=100mW,d=10mm/Area Scan (7x7x1): Measurement grid: dx=10mm, dy=10mm

[Info: Interpolated medium parameters used for SAR evaluation.](#)

Maximum value of SAR (measured) = 19.1 W/kg

Body/5800MHz,Pin=100mW,d=10mm/Zoom Scan (7x7x6)/Cube 0: Measurement grid: dx=4mm,

dy=4mm, dz=1.4mm

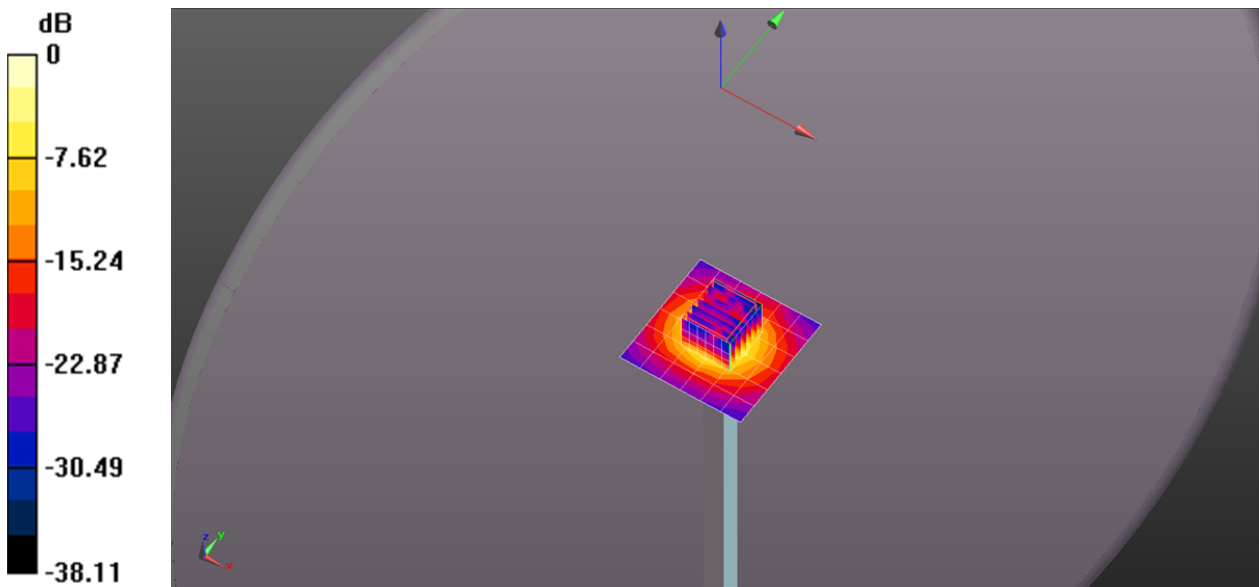
Reference Value = 37.027 V/m; Power Drift = 0.06 dB

Peak SAR (extrapolated) = 33.6 W/kg

SAR(1 g) = 7.11 W/kg; SAR(10 g) = 2.04 W/kg

[Info: Interpolated medium parameters used for SAR evaluation.](#)

Maximum value of SAR (measured) = 19.0 W/kg



0 dB = 19.0 W/kg = 12.79 dBW/kg

20130905_System check_Diple5GHzv2 SN1004

Frequency: 5800 MHz; Duty Cycle: 1:1

Body/5800MHz,Pin=100mW,d=10mm/Z Scan (1x1x21): Measurement grid: dx=20mm, dy=20mm, dz=5mm

[Info: Interpolated medium parameters used for SAR evaluation.](#)

Maximum value of SAR (measured) = 18.7 W/kg

