

M9700 Rugged Tablet PC

(Intel® Atom Duo Core N2600 Based Tablet PC)

USERS MANUAL

Version: 1.2

9.7" Rugged Tablet PC

IMPORTANT SAFETY INSTRUCTIONS

Please read these instructions carefully before using the product and save for later reference.

Follow all warnings and instructions marked on the product.

Unplug this product from the wall outlet before cleaning. Clean the product with a damp soft cloth. Do not use liquid or aerosol cleaners as it may cause permanent damage to the screen.

Do not use this product near water.

Do not place this product on an unstable cart, stand, or table. The product may fall, causing serious damage to the product.

This product should be operated from the type of power indicated on the marking label. If you are not sure of the type of power available, consult your dealer or local power company.

This product is equipped with a 3-wire grounding type plug, a plug having a third (grounding) pin. This plug will only fit into a grounding-type power outlet. This is a safety feature. If you are unable to insert the plug into the outlet, contact your electrician to replace your obsolete outlet. (For AC version only) Do not defeat the purpose of the grounding-type plug.

Do not allow anything to rest on the power cord. Do not locate this product where persons will walk on the cord.

Never push objects of any kind into this product through cabinet slots as they may touch dangerous voltage points or short out parts that could result in a risk of fire or electric shock. Never spill liquid of any kind on the product.

Do not attempt to service this product by yourself, as opening or removing covers may expose you to dangerous voltage points or other risks and will void the warranty. Refer all servicing to qualified service personnel.

Unplug this product from the wall outlet and refer servicing to qualified service personnel under the following conditions:

When the power cord or plug is damaged or frayed.

If liquid has been spilled into the product.

If rainy or water has been exposed to the product.

If the product does not operate normally that the operating instructions are followed. Adjust only those controls that are covered by the operating instructions since improper adjustment of other controls may result in damage and will often require extensive work by a qualified technician to restore the product to normal operation.

If the product has been dropped or the cabinet has been damaged.

If the product exhibited a distinct change in the performance, that indicates a need for service.

Copyright Notice

Copyright © 2012 Winmate Communication Inc., ALL RIGHTS RESERVED. No part of this document may be reproduced, copied, translated, or transmitted in any form or by any means, electronic or mechanical, for any purpose, without the prior written permission of the original manufacturer. **Trademark**

Acknowledgement

Brand and product names are trademarks or registered trademarks of their respective owners.

Disclaimer

Winmate Communication Inc. reserves the right to make any product changes without notice, including circuits and/or software described or contained in this manual in order to improve design and/or performance. Winmate Communication assumes no responsibility or liability for the use of the described product(s), conveys no license or title under any patent, copyright, or masks work rights to these products, and makes no representations or warranties that these products are free from patent, copyright, or mask work right infringement, unless otherwise specified. Applications that are described in this manual are for illustration purposes only. Winmate Communication Inc. makes no representation or warranty that such application will be suitable for the specified use without further testing or modification.

Warranty

Winmate warrants that each of its products will be free from material and workmanship defects for a period of one year from the invoice date. If the customer discovers a defect, Winmate will, at its option, repair or replace the defective product at no charge to the customer, provided it is returned during the warranty period of one year, with transportation charges prepaid. The returned product must be properly packaged in its original packaging to obtain warranty service.

If the serial number and the product shipping data differ by over 30 days, the in-warranty service will be made according to the shipping date. In the serial numbers the third and fourth two digits give the year of manufacture, and the fifth digit means the month (e. g., with A for October, B for November and C for December).

For example, the serial number 1W08Axxxxxxx means October of year 2008.

Customer Service

We provide service guide for any problem as follow steps : First, visit the website at <http://www.winmate.com.tw> to find the update information about the product. Second, contact with your distributor, sales representative, or our customer service center for technical support if you need additional assistance. You may have the following information ready before you call :

- ? ⑩ Product serial number
- ? ⑩ Peripheral attachments
- ? ⑩ Software (OS, version, application software, etc.)
- ? ⑩ Description of complete problem
- ? ⑩ The exact wording of any error messages

In addition, free technical support is available from our engineers every business day. We are always ready to give advice on application requirements or specific information on the installation and operation of any of our products. Please do not hesitate to call or e-mail us.

Notice

1. Do not touch the LCD panel surface with sharp or hard objects.
2. Do not use abrasive cleaners, waxes or solvents for cleaning, use only a dry or damp, soft cloth.
3. Use only with a high quality, safety-approved, AC/DC power adapter.

Safety Precautions

ⓘ Warning!



Always completely disconnect the power cord from your chassis whenever you work with the hardware. Do not make connections while the power is on. Sensitive electronic components can be damaged by sudden power surges. Only experienced electronics

personnel should open the PC chassis.



ⓘ Caution!

Always ground yourself to remove any static charge before touching the CPU card. Modern electronic devices are very sensitive to static electric charges. As a safety precaution, use a grounding wrist strap at all times. Place all electronic components in a static-dissipative surface or static-shielded bag when they are not in the chassis.

FEDERAL COMMUNICATIONS COMMISSION

This equipment has been tested and found to comply with the limits for a Class B digital device, pursuant to Part 15 of the FCC Rules. These limits are designed to provide reasonable protection against harmful interference in a residential installation. This equipment generates, uses and can radiate radio frequency energy and, if not installed and used in accordance with the instructions, may cause harmful interference to radio communications. However, there is no guarantee that interference will not occur in a particular installation. If this equipment does cause harmful interference to radio or television reception, which can be determined by turning the equipment off and on, the user is encouraged to try to correct the interference by one or more of the following measures:

- Reorient or relocate the receiving antenna.
- Increase the separation between the equipment and receiver.
- Connect the equipment into an outlet on a circuit different from that to which the receiver is connected.
- Consult the dealer or an experienced radio/TV technician for help.

CAUTION:

Any changes or modifications not expressly approved by the party responsible for compliance could void the user's authority to operate the equipment.

This transmitter must not be co-located or operating in conjunction with any other antenna or transmitter.

RF exposure warning

The equipment complies with FCC RF exposure limits set forth for an uncontrolled environment.

The antenna(s) used for this transmitter must not be co-located or operating in conjunction with any other antenna or transmitter.

RF exposure information (SAR)

This Rugged Table PC meets the government's requirements for exposure to radio waves. This Rugged Table PC is designed and manufactured not to exceed the emission limits for exposure to radio frequency (RF) energy set by the Federal Communications Commission of the U.S. Government. The exposure standard for wireless Rugged Table PC employs a unit of measurement known as the Specific Absorption Rate, or SAR. The SAR limit set by the FCC is 1.6 W/kg. Tests for SAR are conducted using standard operating positions accepted by the FCC with the Rugged Table PC transmitting at its highest certified power level in all tested frequency bands. Although the SAR is determined at the highest certified power level, the actual SAR level of the Rugged Table PC while operating can be well below the maximum value. This is because the Rugged Table PC is designed to operate at multiple power levels so as to use only the power required to reach the network. In general, the closer you are to a wireless base station antenna, the lower the power output. The highest SAR value for US model Rugged Table PC as reported to the FCC when tested for use at the body, as described in this user guide, is 0.770 W/kg.

Industry Canada Class B Statement

This Class [B] digital apparatus complies with Canadian ICES-003.
Cet appareil numérique de la classe [B] est conforme à la norme NMB-003 du Canada.

This device complies with Industry Canada licence-exempt RSS standard(s). Operation is subject to the following two conditions: (1) this device may not cause interference, and (2) this device must accept any interference, including interference that may cause undesired operation of the device.

IEEE 802.11b or 802.11g operation of this product in the Canada is firmware-limited to channels 1 through 11.

Déclarations d'exposition aux RF liées
Avertissement d'exposition RF: L'équipement est conforme aux limites d'exposition aux RF établies pour un environnement non contrôlé. L'antenne (s) utilisée pour ce transmetteur ne doit pas être co-localisés ou fonctionnant en conjonction avec une autre antenne ou transmetteur.

Ce dispositif est conforme à la norme de l'industrie Candada exempts de licence RSS (s). L'opération est soumise aux deux conditions suivantes: (1) Cet appareil ne peut causer d'interférences nuisibles, et (2) cet appareil doit accepter toute interférence reçue, y compris les interférences qui peuvent causer un mauvais fonctionnement de l'appareil.

Packaging List

This product is shipped with the items list below. Please make sure that all are in your package.

Item	Description	Note
Default Packing Accessories		
1	1 piece of Rugged Tablet PC Quick Start Guide.	
2	1 piece of CD for Recovery CD for Operation System (Windows embedded standard 7).	
3	1 piece of CD for M970D Manual.	
4	1 piece of 12V Adapter w/ Standard Power Cord. (Euro / U.S. Std type, 1.8m)	
5	LAN (female) Adapter cable	
6		
Optional Accessories		
1	Table Stand	
2	HDMI (female) Adapter cable	
3	Hand Strap	
4	Capacitive Touch Stylus	
5	VESA Mounting Kit	
6	Vehicle charger	

1 Power Button **Press 2 seconds continuous** to turn-on the PC. Press
 2 LED Indicator once to turn off backlight when PC is on. Press once to tune on backlight when backlight is off Need **8 seconds** continuous push to force the Tablet PC turn-off immediately. From right to left shows the status about **Power mode, Battery mode, Storage and WiFi** status mode.

3 Menu Push Menu function to show Brightness, Volume, Battery status and WiFi/Bluetooth on/off. **Chapter 2.2.1**

4 Hotkey (F1) 1 programmable Hot-key for user to define by application **Chapter 2.2.2**

Indicator Status Description
Green light : when Power On.
Orange Light : Under charging
Red Blinking Light : Low Battery
 Check **Chapter 3.2.3/ 2.4** for low battery and replacing battery

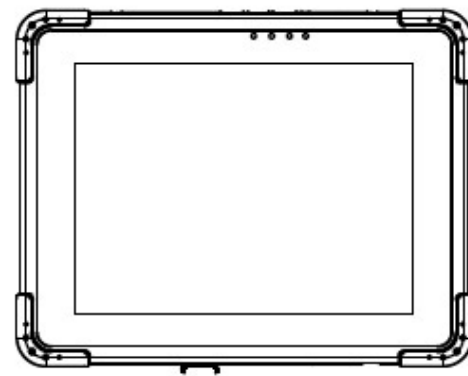
1 DC-in Connect with power adapter

Contents

IMPORTANT SAFETY INSTRUCTIONS.....	2
PACKAGING LIST	6
CHAPTER 1 GETTING STARTED.....	10
1.1 CONNECTING THE AC POWER.....	10
1.2 TURNING ON AND OFF THE TABLET PC.....	11
1.2.1 TURNING ON THE TABLET PC.....	11
1.2.2 TURNING OFF THE TABLET PC.....	11
1.3 THE OPTIMIZED USE FOR SUNLIGHT READABLE TOUCH SCREEN.....	12
1.4 TAKING A LOOK AT I/O FUNCTIONS (FOR 9.7 INCH TABLET PC).....	13
1.5 PRODUCT FEATURES AND SPECIFICATION	17
1.5.2 Product Features	17
1.5.2 Product Specification.....	18
CHAPTER 2 OPERATING TABLET PC AND HOTTAB HOTKEY UTILITY	21
2.2 STARTING AND STOPPING THE TABLET PC	21
2.2 QUICK TO KNOW MENU AND HOTTAB HOTKEY FUNCTION	22
2.2.1 How to use Menu Function	22
2.2.2 How to use Hotkey Function.....	24
Use the HotTab software utility to make it easy to program and define hot key by customer's usual application.	24
2.2.3 Connecting to a Wireless Network	27
2.2.4 Using the Bluetooth Wireless Feature.....	28
2.2.4 Using the 3G Feature (Optional)	30
2.2.6 Using the Camera Feature.....	33
CHAPTER 3 TABLET PC POWER MANAGEMENT	35
3.1 ABOUT AC ADAPTER	35
3.2 CHARGING AND CHECKING CHARGING STATUS	36
3.2.1 Charging the Battery Pack.....	36
3.2.3 Charging Approaches.....	36
3.2.3 Checking the Battery Level	37
3.2.4 Battery Low Signals and Actions	37
3.3 POWER MANAGEMENT.....	37
FOR DETAILED INFORMATION ON POWER MANAGEMENT, SEE WINDOWS' HELP.....	38
CHAPTER 4 EXPANDING YOUR TABLET PC.....	40
4.1 HOW AND WHEN TO USE BIOS SETUP	40
4.2 BIOS FUNCTIONS	41
4.2.1 Main Menu	41
4.2.2 Advanced Menu.....	41
4.2.3 Chipset Menu.....	46
4.2.4 Boot Menu	47
4.2.5 Security Menu	48
4.2.6 Save & Exit Menu.....	49

CHAPTER 1

Getting Started



CHAPTER 1 GETTING STARTED

This chapter guides you to get the Rugged Tablet PC ready for operating.

1.1 Connecting the AC Power

Our tablet PC can operate either on the external AC power adapter or internal battery power. It is suggested that you use AC power when you start up the tablet PC first time.

****Caution**

Use only the AC adapter included with your tablet PC. Using other AC adapters may damage the tablet PC.

1. Plug the DC cord of the AC power connector of the

adapter to the tablet PC.



2. Plug the female end of the the AC adapter and the male end to the power electrical outlet.

AC power cord to

3. When the AC adapter is connected, the Battery Pack is also under charging. You can check the Battery Status LED indicator to see the currently progress. The indicator turns to green when is fully charged.

(For information on using battery power, see "Chapter 3 The Power Management")

****Caution**

When you disconnect the AC adapter, disconnect from the electrical outlet first and then from the tablet PC. A reverse procedure may damage the AC adapter or the tablet PC. When unplugging the connector, always hold the plug head. Never pull on the cord.

1.2 Turning On and Off the Tablet PC

1.2.1 Turning on the Tablet PC

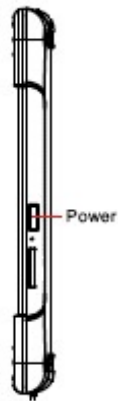
1. Place your tablet PC on a flat and stable surface or holding the tablet PC on your hand.
2. Make sure that the tablet PC is either connected to AC power or the battery pack with power.

3. Press the power button on the right side by 2-3 seconds to start it.

1.2.2 Turning off the Tablet PC To turn off the tablet PC power, use the "Shut Down" command of your operating system.

****Caution**

If you have to turn the tablet it off, wait for at least five on rapidly can damage it.



PC on again immediately after turning seconds. Turning the tablet PC off and

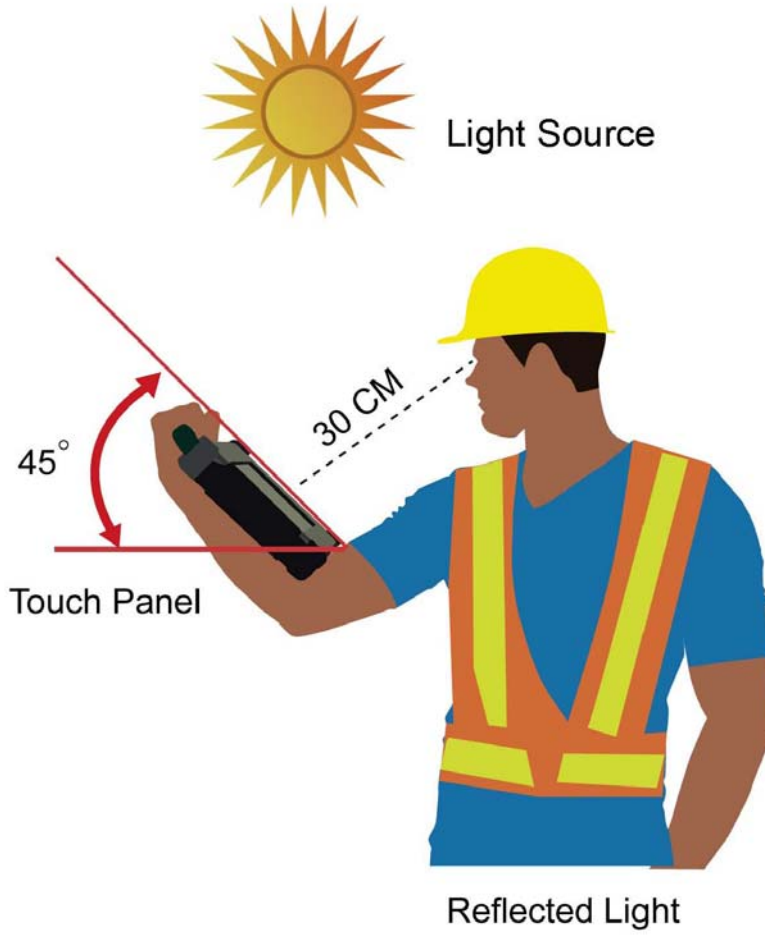
1.3 The Optimized Use for Sunlight Readable Touch screen.

With the imposed reflective function, the modified LCD can reflect the ambient light passing the LCD cell and utilize the reflected light beams as its illumination. The stronger the ambient light is, the brighter the LCD will appear. As a result, the modified LCD is viewable under lighting conditions. The optimized angle of view is forty-five degree. And the optimized distance of view is 30cm.

Light Source

****Caution**

Although transfective used in outdoor and it may increase lights under sunlight, that you should keep appropriate operation and storage, direct sunlight if ensure the LCD work stably, (32-121°F) operation temperature is



LCD is mainly environment the reflective it is suggested the LCD in temperature for and avoid possible. To transfective 0~50°C and storage suitable.

1.4 Taking a Look at I/O Functions (for 9.7 inch Tablet PC)

This section we will show the Tablet PC external connection parts and their functions.

Front side Control Functions



#	Components	Function Description	See Other Intro.
Item	Description		Note
Default Packing Accessories			
1	1 piece of Rugged Tablet PC Quick Start Guide.		
2	1 piece of CD for Recovery CD for Operation System (Windows embedded standard 7).		
3	1 piece of CD for M970D Manual.		
4	1 piece of 12V Adapter w/ Standard Power Cord. (Euro / U.S. Std type, 1.8m)		
5	LAN (female) Adapter cable		
6			
Optional Accessories			
1	Table Stand		
2	HDMI (female) Adapter cable		
3	Hand Strap		
4	Capacitive Touch Stylus		
5	VESA Mounting Kit		
6	Vehicle charger		

- 1 Power Button **Press 2 seconds continuous** to turn-on the PC. Press once to turn off backlight when PC is on. Press once to tune on backlight when backlight is off Need **8 seconds** continuous push to force the Tablet PC turn-off immediately. From right to left shows the status about [Power mode](#), [Battery mode](#), [Storage](#) and [WiFi](#) status mode.
- 2 LED Indicator

LED Indicator Status Description

LED Term	Power mode	Battery Status	Storage Status	Wi Fi Status
-----------------	-------------------	-----------------------	-----------------------	---------------------

LED Indicator

Item	Description	Note
Default Packing Accessories		
1	1 piece of Rugged Tablet PC Quick Start Guide.	
2	1 piece of CD for Recovery CD for Operation System (Windows embedded standard 7).	
3	1 piece of CD for M970D Manual.	
4	1 piece of 12V Adapter w/ Standard Power Cord. (Euro / U.S. Std type, 1.8m)	
5	LAN (female) Adapter cable	

Green light :

when storage under operation.

No light when storage stop operation.

Green light :

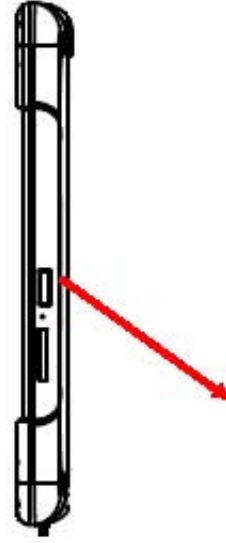
when Wi-Fi under operation.

No light when Wi-Fi stop operation.

Right side Input

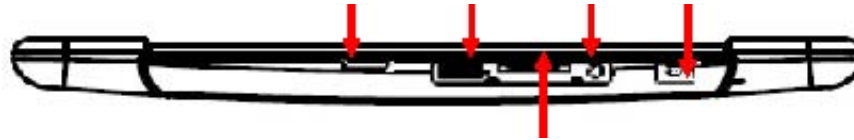
Power Button

LAN / HDMI



#	Components	Function Description	See Other Intro.
Item	Description		
Default Packing Accessories			
1	1 piece of Rugged Tablet PC Quick Start Guide		

Item	Description	Note
Default Packing Accessories		
1	1 piece of Rugged Tablet PC Quick Start Guide.	
2	1 piece of CD for Recovery CD for Operation System (Windows embedded standard 7)	



#	Components	Function Description	See Other Intro.
Item	Description		Note
Default Packing Accessories			
1	1 piece of Rugged Tablet PC Quick Start Guide.		
2	1 piece of CD for Recovery CD for Operation System (Windows embedded standard 7).		
3	1 piece of CD for M970D Manual.		

Item	Description	
Default Packing Accessories		
1	1 piece of Rugged Tablet PC Quick Start Guide.	
2	1 piece of CD for Recovery CD for Operation System (Windows embedded standard 7)	

Through the first Chapter 1.1 to 1.4, you can understand the basic information when you own the machine, in next Chapter you will understand more detail about how to operate the tablet PC. Between this, you can check our product function and specification.

1.5 Product Features and Specification

1.5.2 Product Features Our Rugged Tablet PCs are designed with state of the art industrial use, versatile functionality and solid products. With great mobility support and battery management. The 9.7" rugged tablet provides an alternative solution for those between general consumer and extremely rugged application.



- ? 9.7" 1024x768 Resolution IPS LED Panel
- ? Low-power system with Intel® Atom N2600 processor
- ? 2GB SODIMM DDR3-800 memory
- ? Built-in Wi-Fi/ Bluetooth Module
- ? Support 3G&GPS function (optional)
- ? Standard Battery 5300 mAh
- ? Mobile Rugged-Shock, Vibration, and transit drop
- ? 4 points Projective-capacity touch

1.5.2 Product Specification The product specification as the following table description:

System Specification

Item	Description	Note
Default Packing Accessories		
1	1 piece of Rugged Tablet PC Quick Start Guide.	
2	1 piece of CD for Recovery CD for Operation System (Windows embedded standard 7).	
3	1 piece of CD for M970D Manual.	
4	1 piece of 12V Adapter w/ Standard Power Cord. (Euro / U.S. Std type, 1.8m)	
5	LAN (female) Adapter cable	
6		
Optional Accessories		
1	Table Stand	
2	HDMI (female) Adapter cable	
3	Hand Strap	
4	Capacitive Touch Stylus	
5	VESA Mounting Kit	
6	Vehicle charger	
1	Power Button	Press 2 seconds continuous to turn-on the PC. Press once to turn off backlight when PC is on. Press once to tune on backlight when backlight is off Need 8 seconds continuous push to force the Tablet PC turn-off immediately. From right to left shows the status about Power mode , Battery mode , Storage and WiFi status mode.
2	LED Indicator	
3	Menu	Push Menu function to show Brightness, Volume, Battery status and WiFi/Bluetooth on/off. Chapter 2.2.1
4	Hotkey (F1)	1 programmable Hot-key for user to define by application. Chapter 2.2.2

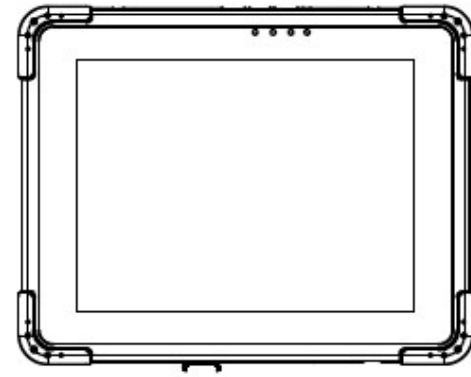
System Specification (continues)

Item	Description	Note
Default Packing Accessories		
1	1 piece of Rugged Tablet PC Quick Start Guide.	
2	1 piece of CD for Recovery CD for Operation System (Windows embedded standard 7).	
3	1 piece of CD for M970D Manual.	
4	1 piece of 12V Adapter w/ Standard Power Cord. (Euro / U.S. Std type, 1.8m)	
5	LAN (female) Adapter cable	
6		
Optional Accessories		
1	Table Stand	
2	HDMI (female) Adapter cable	
3	Hand Strap	
4	Capacitive Touch Stylus	
5	VESA Mounting Kit	
6	Vehicle charger	

- 1 Power Button **Press 2 seconds continuous** to turn-on the PC. Press
2 LED Indicator once to turn off backlight when PC is on. Press once to tune
on backlight when backlight is off Need **8 seconds**
continuous push to force the Tablet PC turn-off
immediately. From right to left shows the status about

CHAPTER 2

Operating Tablet PC and HotTab Hotkey Utility



CHAPTER 2 OPERATING TABLET PC AND HOTTAB HOTKEY UTILITY

This Chapter will guide you how to operate the Tablet PC, including start / stop the PC, and how to use menu function including basic hardware function adjustment and the HotTab hotkey utility software that is very easy & helpful for operating the computer.

2.2 Starting and Stopping the Tablet PC

Starting the Tablet PC You always start the tablet PC using the power button, **push the Power Button continuously by 2 seconds to turn on the Tablet PC.**

Our Tablet PC will starts up with an operating system (OS) existing on the storage device like the hard disk. The computer will automatically load the OS after you turn it on. This is normal booting process.

NOTE: The operating system is the platform for all software application programs to run on. The Tablet computer is recommended to use the Microsoft Windows XP embedded operating system for default solution.

Stopping the Tablet PC

When you finish your work, you can stop the tablet PC by turning off the power or leaving the tablet PC in Standby mode:

1 Power Off Following the shutdown process during operating system. The standard process can prevent

#	Stop mode	How to do	Start or Resume again
---	-----------	-----------	-----------------------

unsaved data loss or damage your software programs.

2 **Sleep (S3)** Under normal operating system, **Push the Power Button 0.5 second** to go to sleep mode.

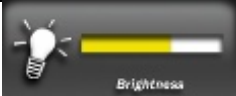
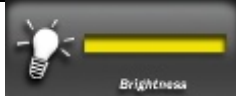


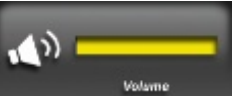

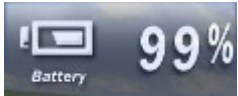
If you choose to stop in Standby mode, you can return to where you left off the next time you start up the tablet PC. ([See "Power Management" in Chapter 3 for more information.](#))

2.2 Quick to Know Menu and HotTab Hotkey Function



This section will introduce you about our easy-of-use function buttons. Our Tablet PC function buttons support very easy way and useful function to adjust Brightness, Volume and watch Battery current status. For programmable Hotkey function can also be defined by user to control by their common use application.

2.2.1 How to use Menu Function

Menu Function Adjustment

#	Action	Function Description	Funtion Adjustment
S h o w C u r r e n t B r i g h t	1 st Time	 <p>Brightness</p>	 <p>Brightness</p>
		 <p>Brightness</p>	<p>Click "Vol+" button to Click "Vol-" to decrease</p>
S h o w c	2 nd Time	 <p>Volume</p>	 <p>Volume</p>
		 <p>Volume</p>	<p>increase brightness (Or Drag brightness(Or Drag by by Touch)</p>
		 <p>Battery 99%</p>	<p>urrent Volume Click "Vol+" button to Click " Vol-" to decrease</p>
			<p>increase volume(Or Drag by volume(Or Drag by Touch)</p>

Menu Function Adjustment

#	Action	Function Description	Funtion Adjustment
4	Push "Menu" button 4 th Time		Show current on/off of Wireless\ Bluetooth \ Camera and 3G\GPS mode. 1. WiFi on/off 2. Bluetooth on/off 3. Camera on/off
5	Push "Menu" button continuously 5 seconds		

****NOTICE**

If you shutdown the Tablet PC during operating system (By Touch) under

Item	Description	Note
Default Packing Accessories		
1	1 piece of Rugged Tablet PC Quick Start Guide.	
2	1 piece of CD for Recovery CD for Operation System (Windows embedded standard 7).	
3	1 piece of CD for M970D Manual.	
4	1 piece of 12V Adapter w/ Standard Power Cord. (Euro / U.S. Std type, 1.8m)	
5	LAN (female) Adapter cable	
6		

f u n c t i o n	o n o r m a l
P u s h	L o c k
5	a l l
P u s h	o p e r a t i o n
5	b u t t o n * *
s e c o n d s	(n o t
t o	i n c l u d i n g
s e c o n d s	T o u c h
t o)
U n l o c k	
b a c k	
t	

2.2.2 How to use Hotkey Function

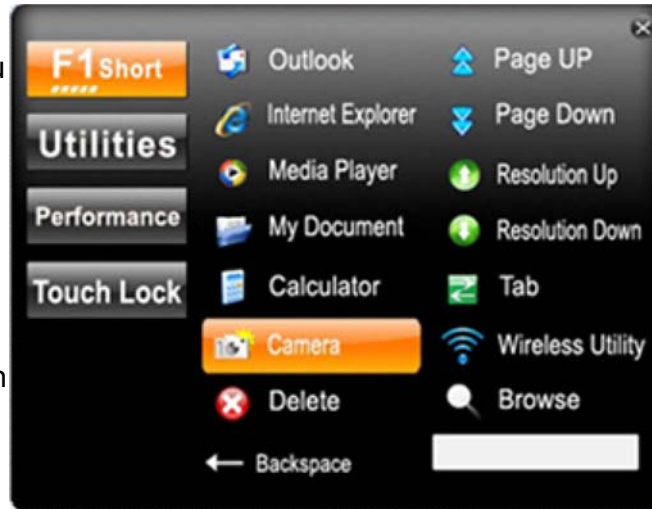
Hotkey Function

Use the HotTab software utility to make it easy to program and define hot key by customer's usual application.

Long press (3~4 seconds) the "F1" button on the top of your M970D and you can see the software application at center of desktop.

Choose one software as your hotkey function. After software application which you immediately when you short button.

The Hotkey software program programmable application Hotkey; we choose some function for default setup. For can choose his own application easy by setting up the the setup window.

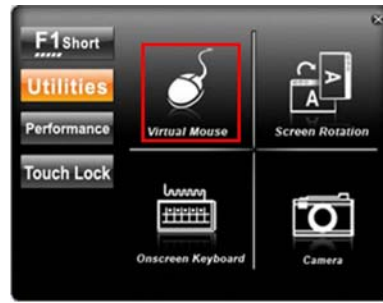


application that, the set will open press "F1"

is the software for the usual applied example, user program very function from

Utilities Function

A. The first is virtual mouse

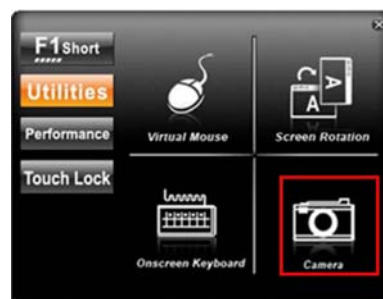
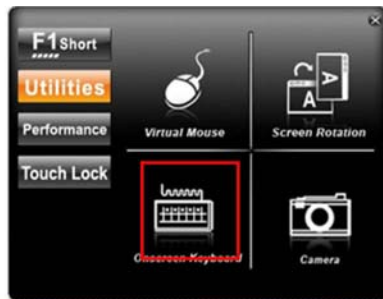
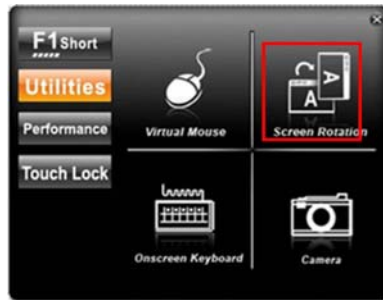


B. Screen rotation

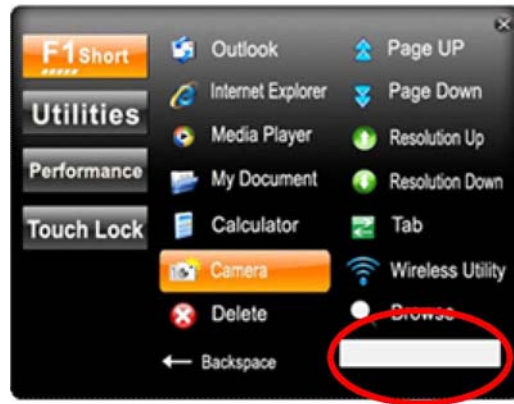
C. Onscreen Keyboard

D. Camera Function

Users Manual 25 Rugged Table PCs



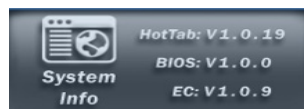
1 F1 Short function key You can set F1 button as a hotkey to open the programs listed on menu or use "Browse" and choose the execution program file.



2 Power Manage function



3 System Information When you press "menu button"



4 Low battery warning: When the battery under 10%, system will show the battery low to remind you to change the new battery or insert adapter to charge.



2.2.3 Connecting to a Wireless Network To connect to a wireless network:

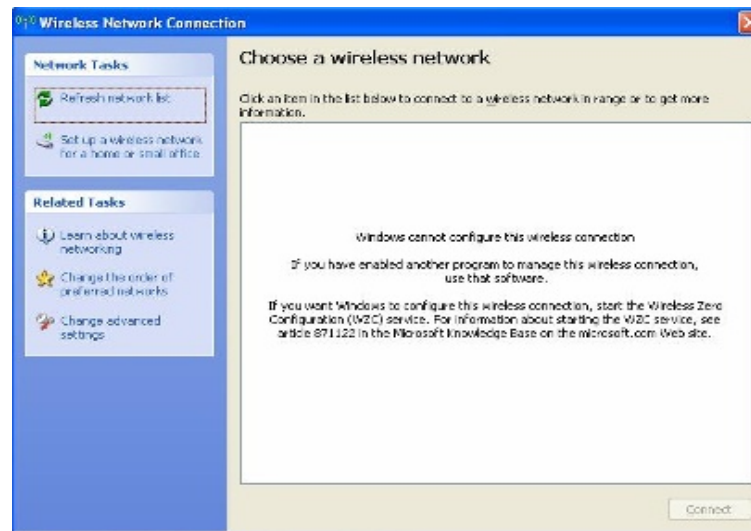
1. Push "Menu" button 4 times and making sure the "On".

Wireless function is



2. Please using the default Windows **Wireless Network**

Connection utility.



2.2.4 Using the Bluetooth Wireless Feature We apply Bluetooth 2.1+ EDR module for default function of the Tablet PC series. Depending on your application, the Bluetooth module can give you capability for short-range wireless communications between devices without requiring a cable connection. The transmission can go through walls, pockets and briefcases as long as two devices are within range around 10 meters. Following the easy step to connect to the Bluetooth communication.

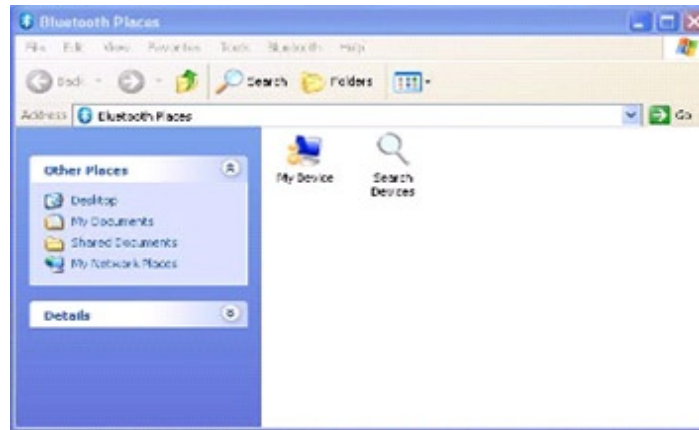
1. Push "Menu" button 4 times and making function is "On".

sure the Bluetooth

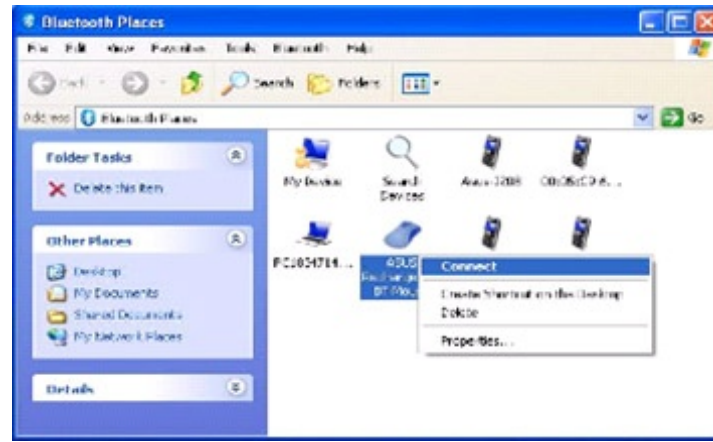


2. Double click the Bluetooth shortcut and bluetooth device automatically. Or double click "**Search Devices**" to search again.

it will search any

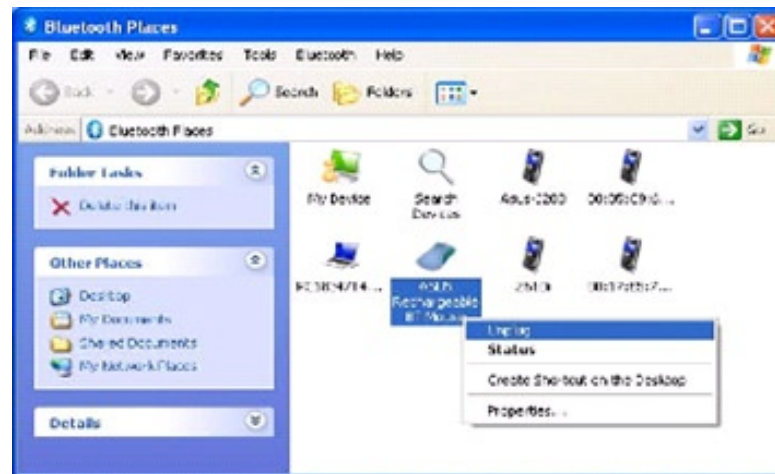


1. Choose the bluetooth device you want to connect, and left click to choose **"Connect"**. Then the device will be connected to the module.



2. When under connecting, left check the connection status, or choose **"Unplug"** to remove the connection.

click to



2.2.4 Using the 3G Feature (Optional) We apply a PCI Express® full size 3G module for optional function of the Tablet PC series. Depending on your application, the 3G module can datacard and host PC software combination deliver multiband CDMA2000® 1xEV-DO, UMTS, and GSM wireless wide area network (WWAN) connectivity in a single hardware configuration.

1. Push "Menu" button 4 times and "On".

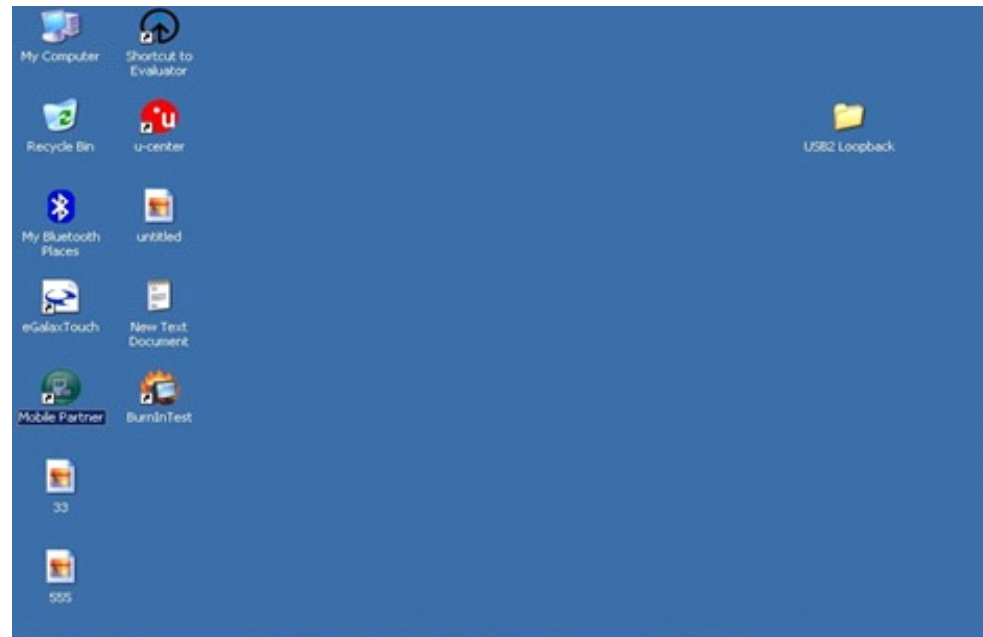
making sure the 3G Module is



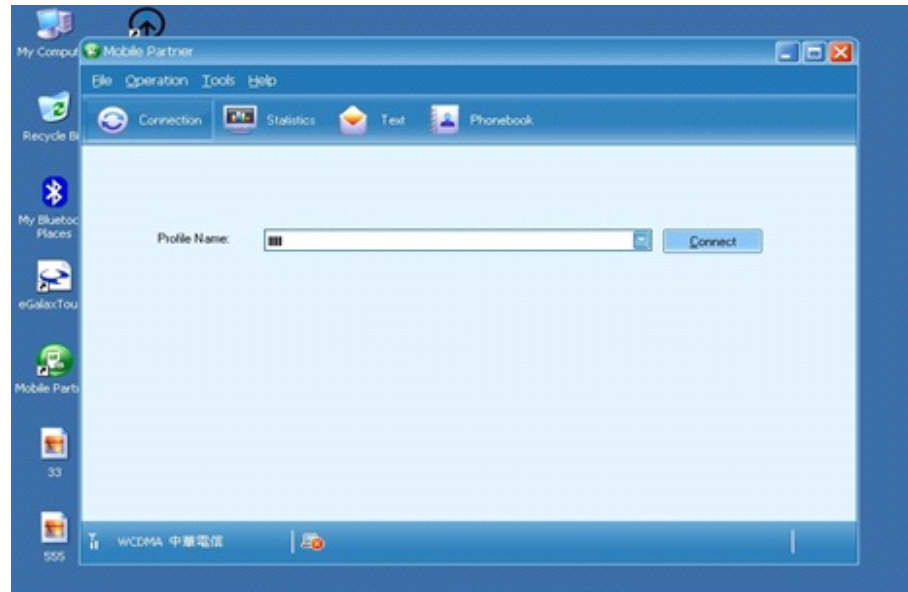
2. The shortcut of 3G application to executive Mobile Partner Internet application.

program shown on screen, then connection management

Users Manual 30 Rugged Table PCs

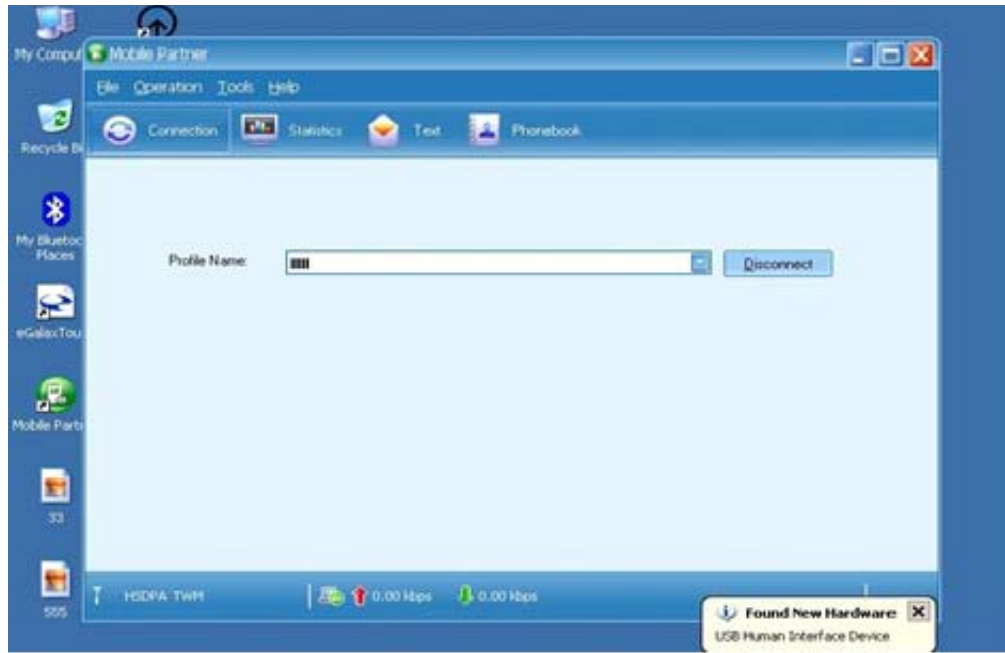


3. Confirm whether to detect the telecommunications system operators, then press the "Connect" connect to 3G networks.



4. After initialization is completed, it will automatically connect to 3G networks.

Note: No additional driver installation is required for 3G module.



2.2.6 Using the Camera Feature We apply a internal 2M Pixels Web Camera module for default function of the Tablet PC series.

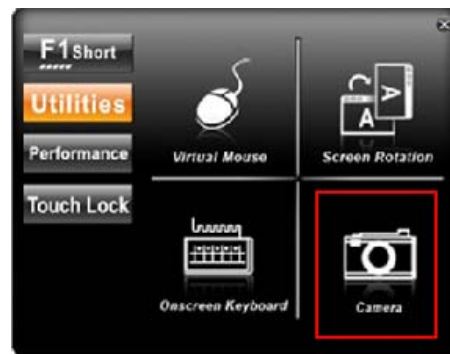
1. Push "Menu" button 4 times and is "On".

making sure the Camera function



2. Press "F1" button about 5 seconds to Then choose the camera function.

into the HotTab utilities menu.



3. Click the

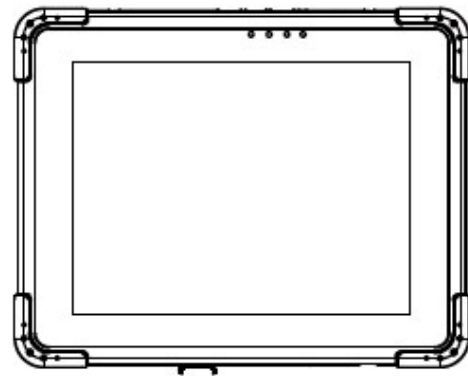
icon to take a

picture.

* Picture & video save path: C:\Webcam

CHAPTER 3

Tablet PC Power Management



CHAPTER 3 TABLET PC POWER MANAGEMENT**3.1 About AC Adapter**

Our Tablet PC support one set of AC adapter and power cord by country area. Please contact with your dealer for appropriate power cord if necessary.

****Caution**

1. **When you disconnect the disconnect from the outlet first and then from A reverse procedure may AC adapter or tablet PC.**
2. **Always hold the plug head unplug the connector, the cord.**
3. **The AC adapter is designed your tablet PC only. the AC adapter to another damage the adapter.**



AC adapter, electrical the tablet PC. damage the

when you never pull out

for use with Connecting device can

The adapter operates on any voltage in the range of 100~240 V AC. The AC adapter serves as a converter from AC (Alternating Current) to DC (Direct Current) power because the tablet PC runs on DC power input, but an electrical outlet usually provides AC power.

3.2 Charging and Checking Charging Status

3.2.1 Charging the Battery Pack The battery pack is the internal power source for the tablet PC. It is rechargeable using the AC adapter. The operating time of a fully charged battery pack depends on how you are using the tablet PC. When your applications often access peripherals, you will experience a shorter operating time.

NOTE:

1. **Charging will not start if the battery's temperature is below 0 °C (32 °F). It is also recommended not to charge the battery when temperature is above 45 °C (113 °F)**
2. **To prevent damage, the charging process may stop and the Battery Charge Indicator flashes red when the environmental temperature gets above 55 °C (131 °F)**

3.2.3 Charging Approaches There is one way recommended to charge the battery pack. By connecting the AC adapter to the tablet PC and an electrical outlet, the Battery Charge Indicator on the tablet PC glowed orange to indicate that charging is in progress. You are advised to keep the tablet PC power off while the battery is being charged. When the battery is fully charged, the Battery Charge Indicator glows green.

CAUTION:

- 1 **After the tablet PC has been fully recharged, do not immediately disconnect and reconnect the AC adapter to charge it again. The above-mentioned may damage the battery.**
- 2 **During charging, do not disconnect the AC adapter before the battery has been fully charged; otherwise you will get a prematurely charged battery.**

3.2.3 Checking the Battery Level

Any battery level indication is an estimated result. The actual operating time can be different from the estimated time, depending on how you are using the tablet PC.

In Windows operating system, you can check the approximate battery level using the battery meter function. To read the battery level in Windows, click the icon on the taskbar. (Click the icon if the tablet PC is using AC power.)

3.2.4 Battery Low Signals and Actions Battery Low occurs when the battery has approximately 10 % (Windows default setting) of its charge remaining. The tablet PC's Battery Charge Indicator (

) **blinks red to alert you take actions.**

NOTICE:

You can set up the Battery Low threshold and signals under Windows. Immediately save your data upon Battery Low. The remaining operating time depends on how you are using the tablet PC. If you are using the audio subsystem, hard or USB flash disk, the battery might run out of charge very quickly.

CAUTION:

- 1. If you do not take any action, the tablet PC will automatically hibernate and turn off.**
- 2. If you fail to save your data when the battery completely runs out of charge, then you will lose your data.**

3.3 Power Management

The Tablet PC supports ACPI (Advanced Configuration and Power Interface) for power management. The power management feature allows you to reduce the power consumption for energy saving. With an ACPI-compliant operating system such as Windows XP, power supply to different tablet PC components is controlled on an as-needed basis. This allows maximum power conservation and performance at the same time. In general, Windows' power management works in following state:

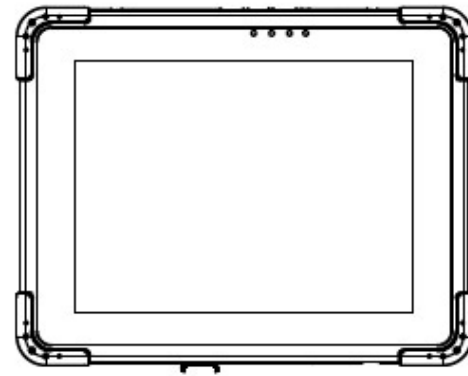
Item	Description	Note
Default Packing Accessories		
1	1 piece of Rugged Tablet PC Quick Start Guide.	
2	1 piece of CD for Recovery CD for Operation System (Windows embedded standard 7).	
3	1 piece of CD for M970D Manual.	
4	1 piece of 12V Adapter w/ Standard Power Cord. (Euro / U.S. Std type, 1.8m)	
5	LAN (female) Adapter cable	
6		
Optional Accessories		
1	Table Stand	
2	HDMI (female) Adapter cable	
3	Hand Strap	
4	Capacitive Touch Stylus	
5	VESA Mounting Kit	

* Depends on
your settings in

Windows. For detailed information on power management, see Windows'

CHAPTER 4

Expanding Your Tablet PC



CHAPTER 4 EXPANDING YOUR TABLET PC

4.1 How and When to Use BIOS Setup

For enter to the Tablet PC BIOS setup, you need to connect with an external USB keyboard, press “**Del**” key when the prompt appears on the screen during start up. The prompt screen shows only few seconds so need press Del key quickly.

****NOTICE**

Updated BIOS version may be published after the manual is released. Check with the latest version of BIOS on website.

You may need to run BIOS setup utility when the below status.

1. Error message on sreen indicate to check BIOS setup.
2. Restoring the factory default settings.
3. Modifying the specific hardware specification
4. Want to optimize the specification.

In order to control the keyboard to select BIOS utility setup, you need

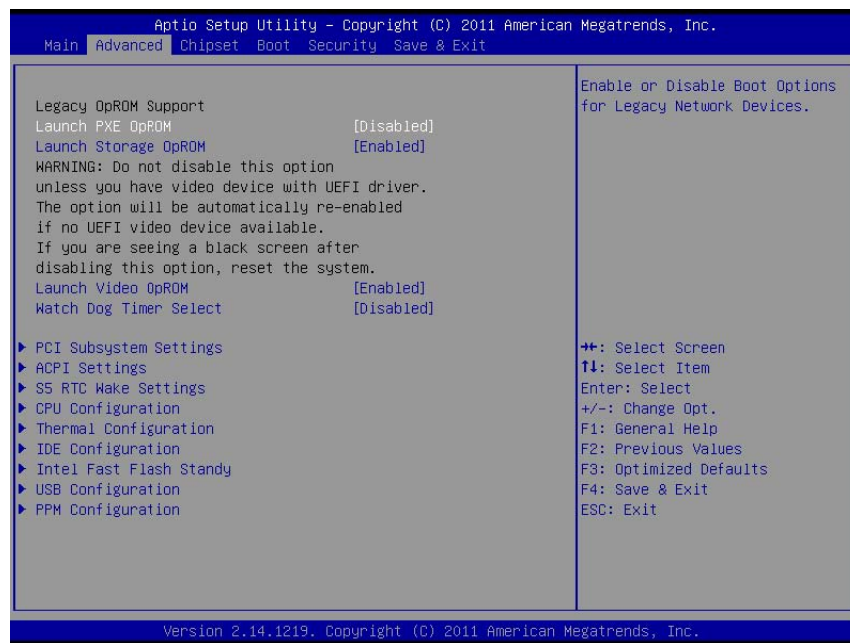
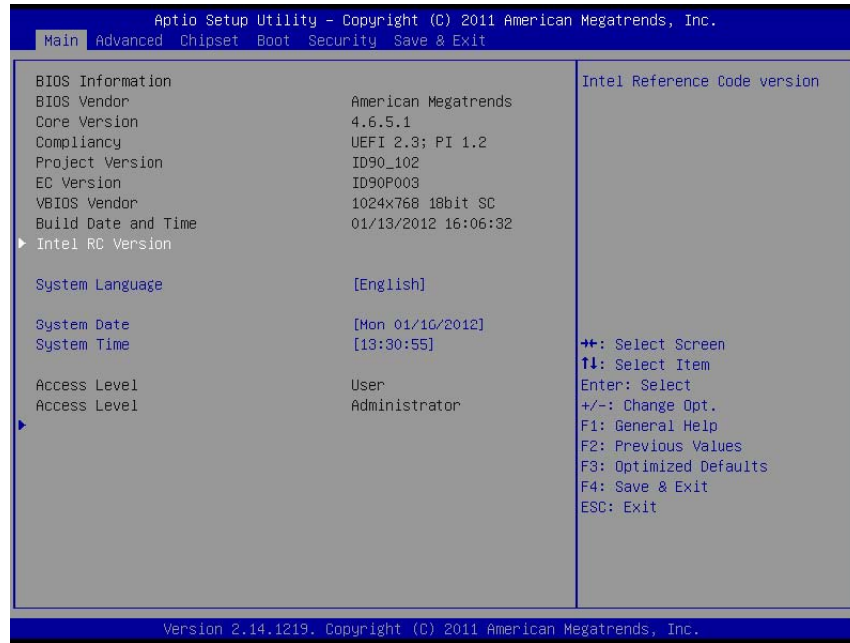
	Item	Description	Note
**NOTICE	Default Packing Accessories		
You can press the F2, F3, F4, -/+ Esc keys by connecting USB keyboard your table. Make sure the item	1	1 piece of Rugged Tablet PC Quick Start Guide.	F1, and a to PC. that
	2	1 piece of CD for Recovery CD for Operation System (Windows embedded standard 7).	
	3	1 piece of CD for M970D Manual.	
	4	1 piece of 12V Adapter w/ Standard Power Cord. (Euro / U.S. Std type, 1.8m)	
	5	LAN (female) Adapter cable	
	6		
	Optional Accessories		
	1	Table Stand	
	2	HDMI (female) Adapter cable	

“Legacy USB Support” under the Main menu is set at Enabled (default).

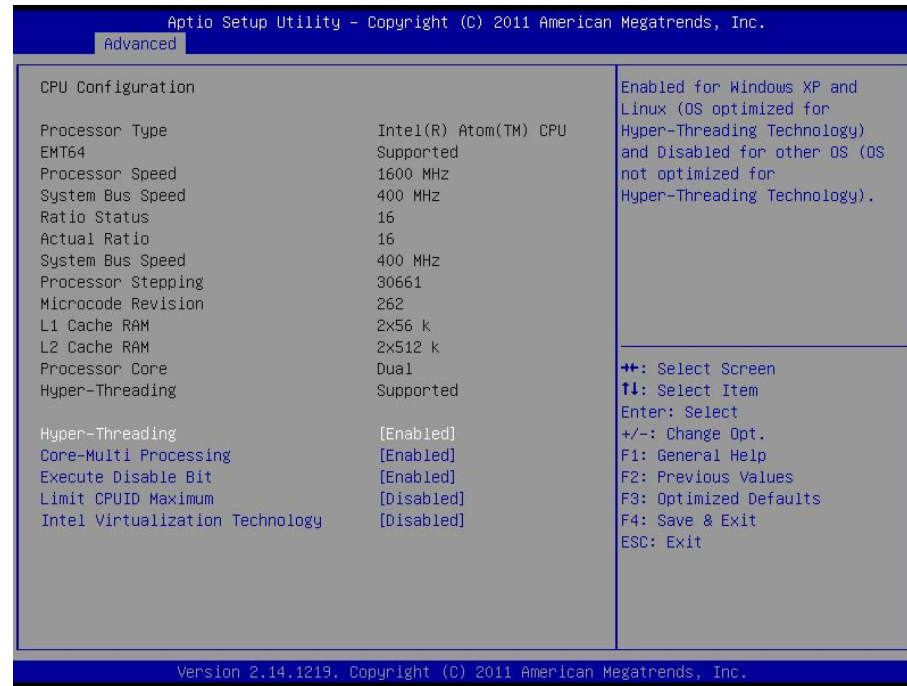
4.2 BIOS Functions

4.2.1 Main Menu The Main menu contains the information of the Tablet system including BIOS version, processor RC version, system language, time, and date.

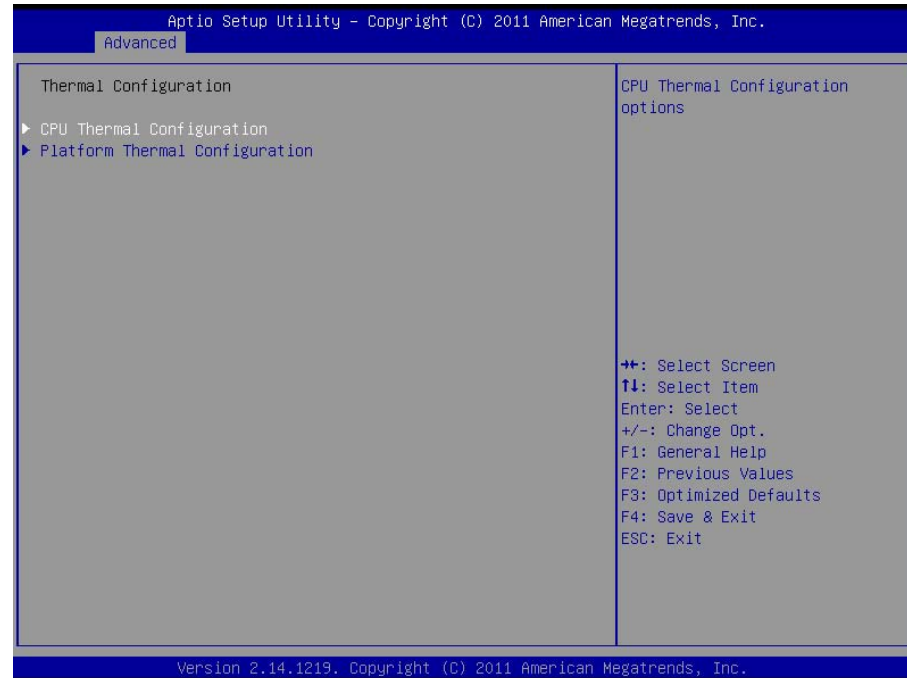
4.2.2 Advanced Menu The Advanced menu contains the selections of PXE OpROM and Watch Dog Timer, and the settings of PCI Subsystem, ACPI, and S5 RTC Wake. Besides, it also contains the configuration information of CPU, Thermal, IDE/SATA, USB, and PPM Configuration.



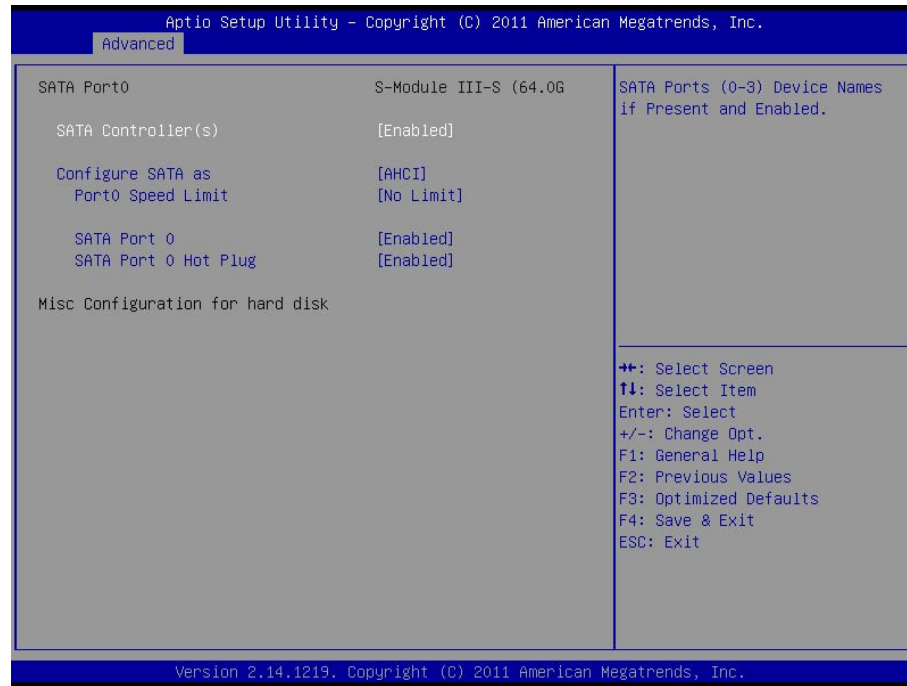
1. CPU Configuration



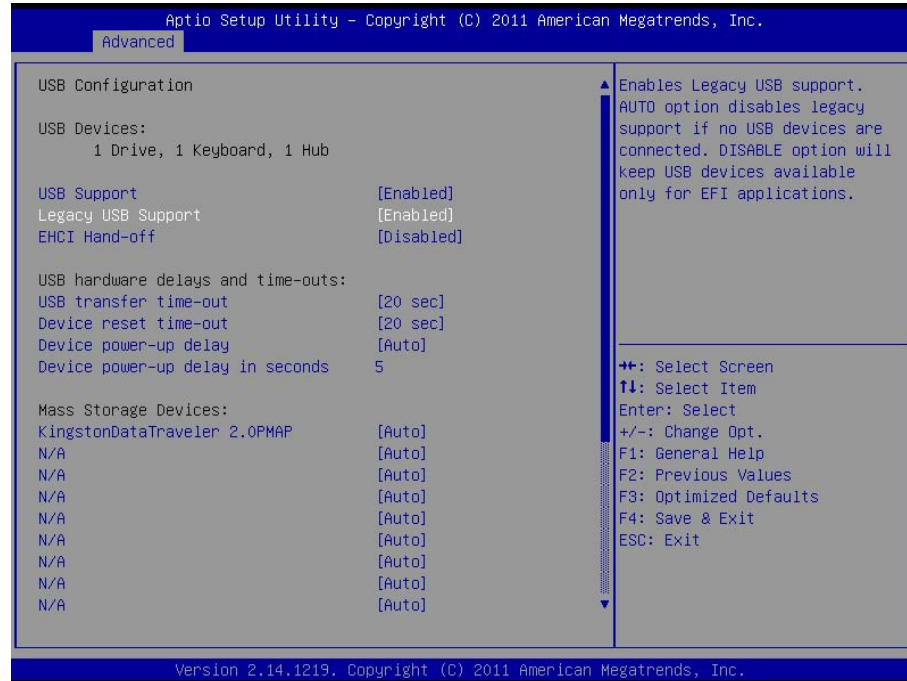
2. Thermal Configuration



1. IDE / SATA Configuration



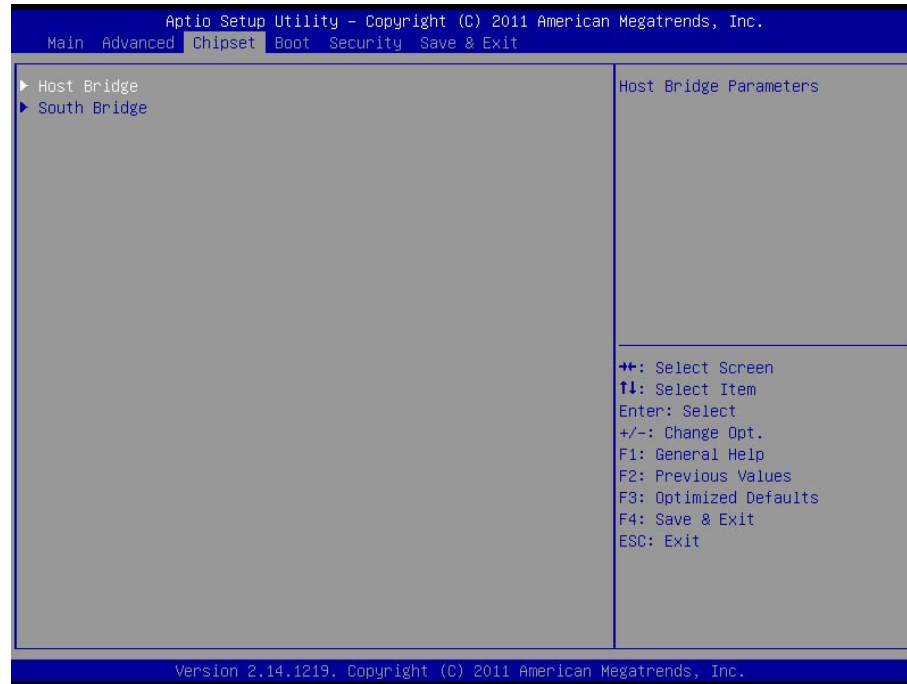
2. USB Configuration



5. PPM Configuration

4.2.3 Chipset Menu

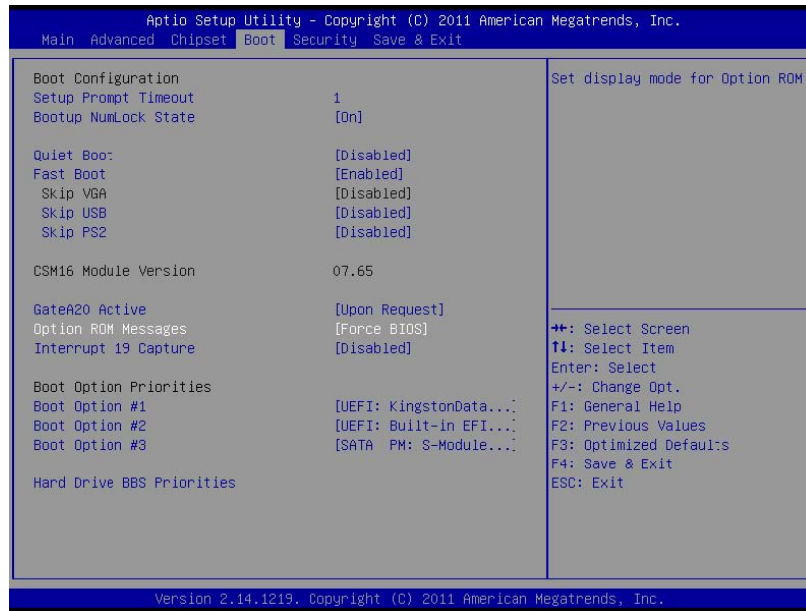
The Chipset menu contains the information of Host Bridge and South Bridge.



4.2.4 Boot Menu The Boot menu sets the sequence of the devices to be searched for the operating system.

The bootable devices will be automatically detected during POST and shown here, allowing you to set the sequence that the BIOS uses to look for a boot device from which to load the operating system. A brief description of button usage is listed next:

4.2.5 Security Menu In the Security menu, users can set Administrator Password, User Password, and HDD Security Configuration.



4.2.6 Save & Exit Menu The Exit menu displays ways of exiting BIOS Setup utility. After finishing with your settings, you must save and exit so that the changes can take effect.

Save Canges and Exit saves the changes you have made and exits BIOS Setup utility. **Discarding Changes and Exit** exits BIOS Setup utility without saving the changes you have made. **Save Canges and Rest** saves the changes you have made and resets BIOS system. **Discarding Changes and Reset** resets BIOS system without saving the changes you have made. **Save Changes** done so far to any of the setup options. **Discard Changes** done so far to any of the setup options. **Resotre Defaults** loads/restore the factory default values for all the items. **Save as User Defaults** saves the changes one so far as User Defaults. **Restore User Defaults** loads/restore the User default values for all the items.

