

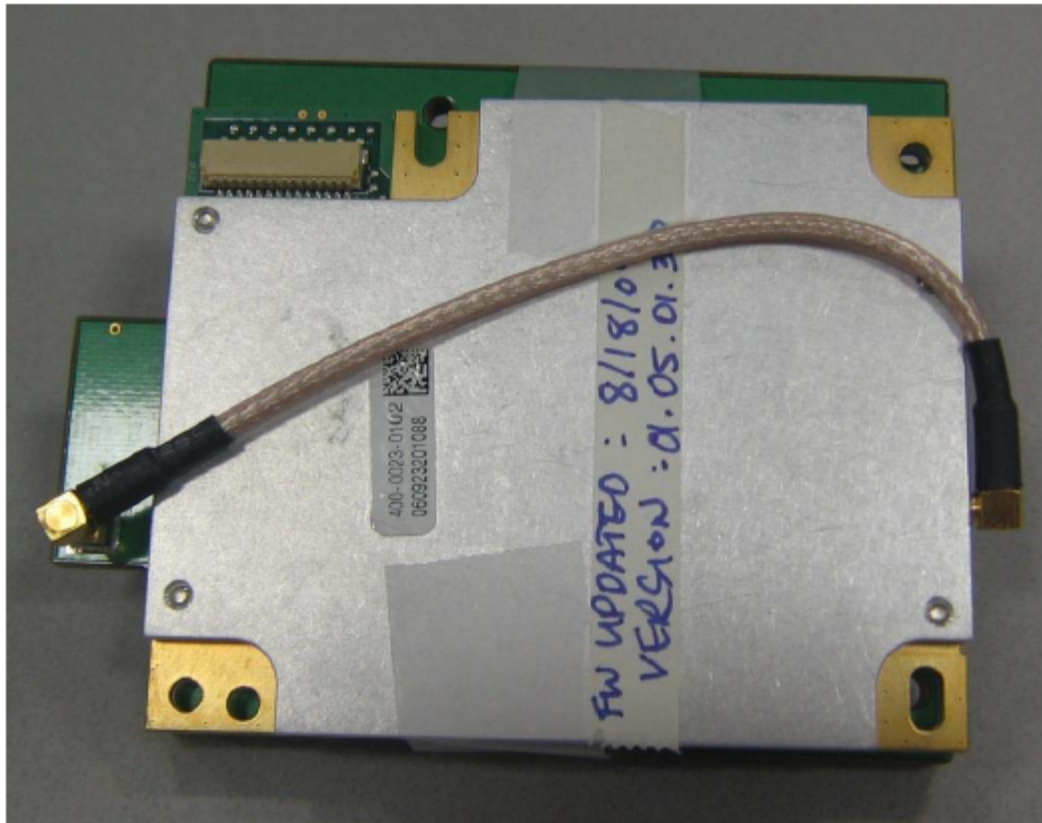
Module and plastic enclosure



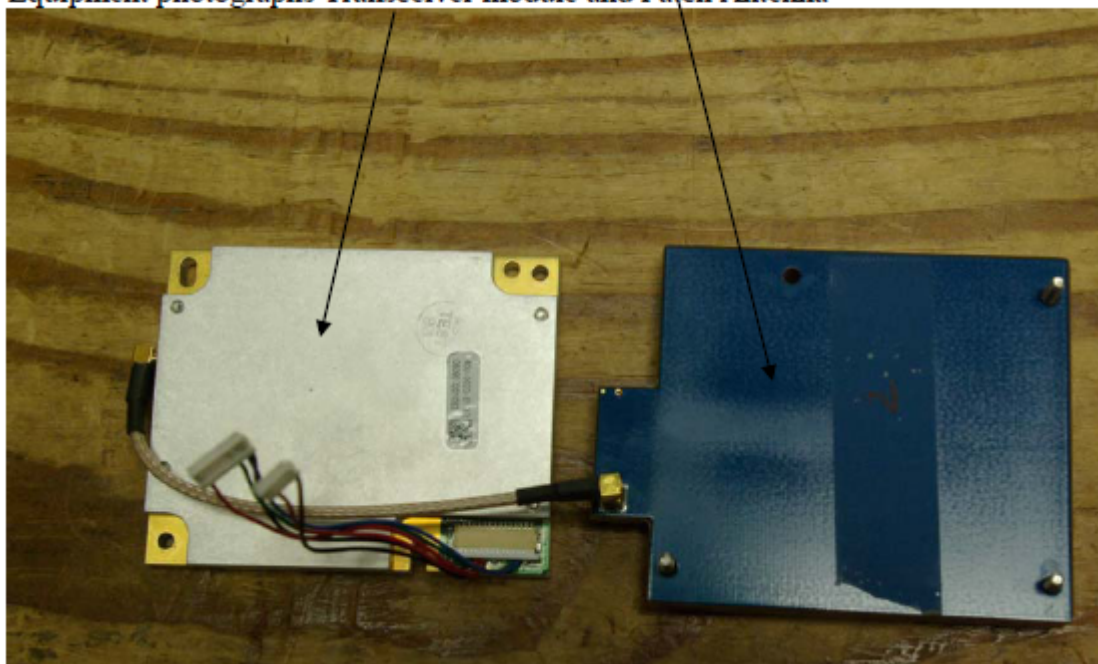
Transceiver module connected to support equipment



Transceiver module attached to antenna with shield

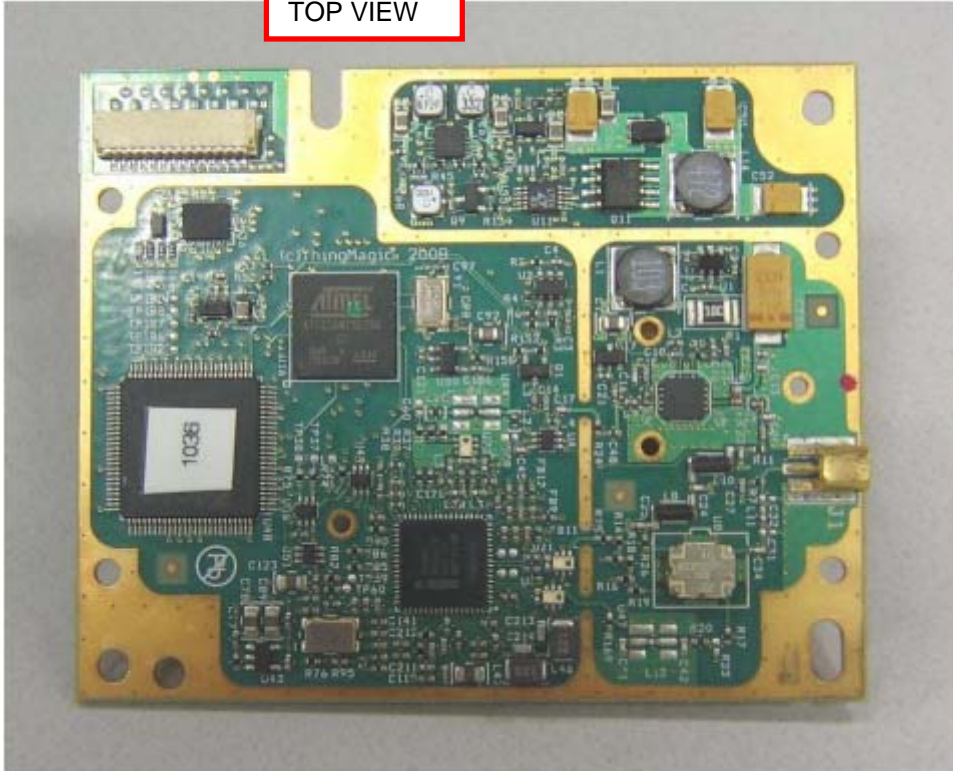


Equipment photographs Transceiver module and Patch Antenna

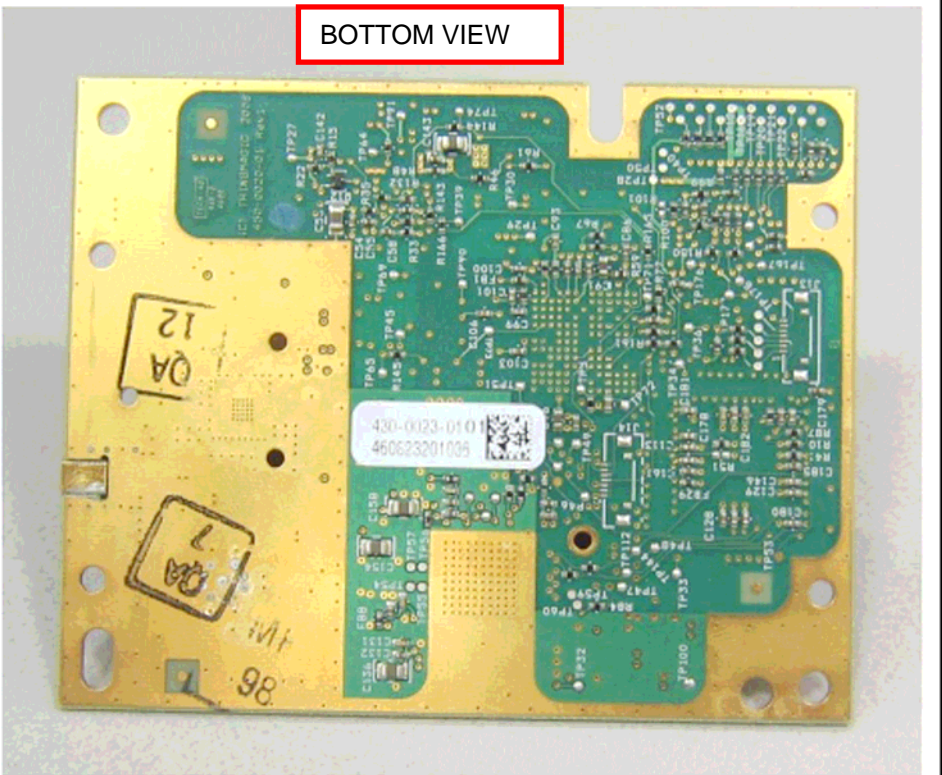


Transceiver PCB

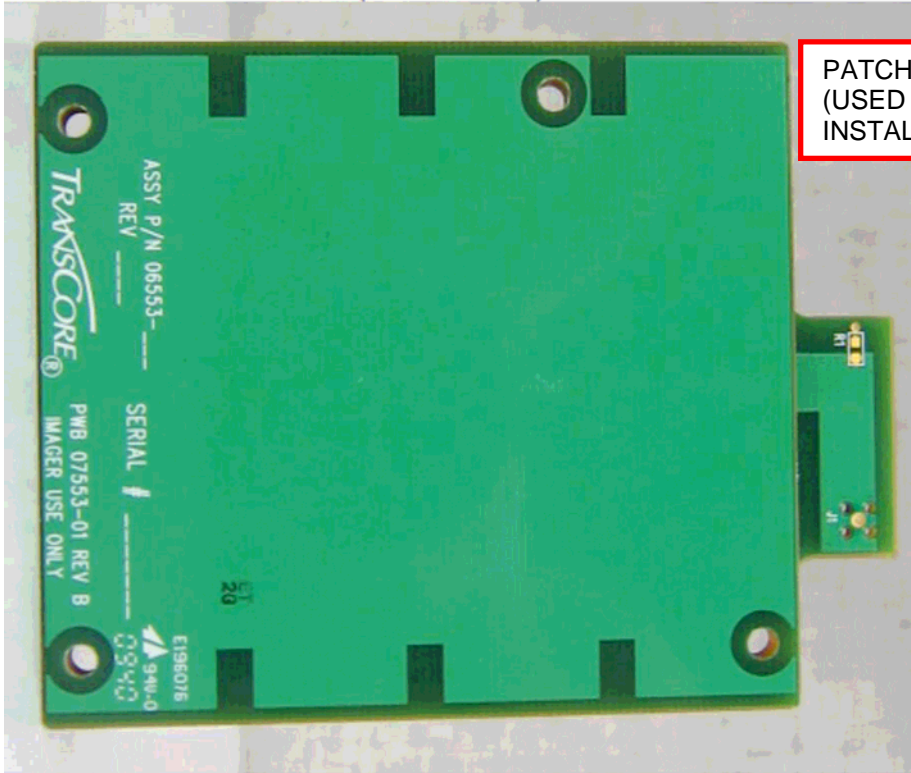
TOP VIEW



BOTTOM VIEW

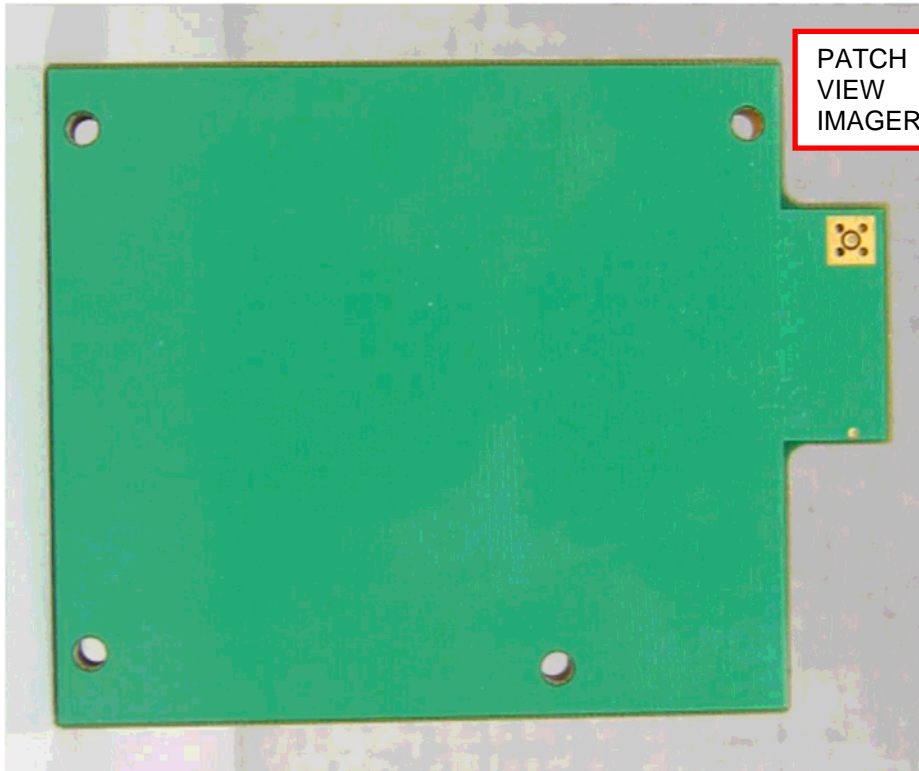


Authorized Patch Antenna (PN 07553-01) front



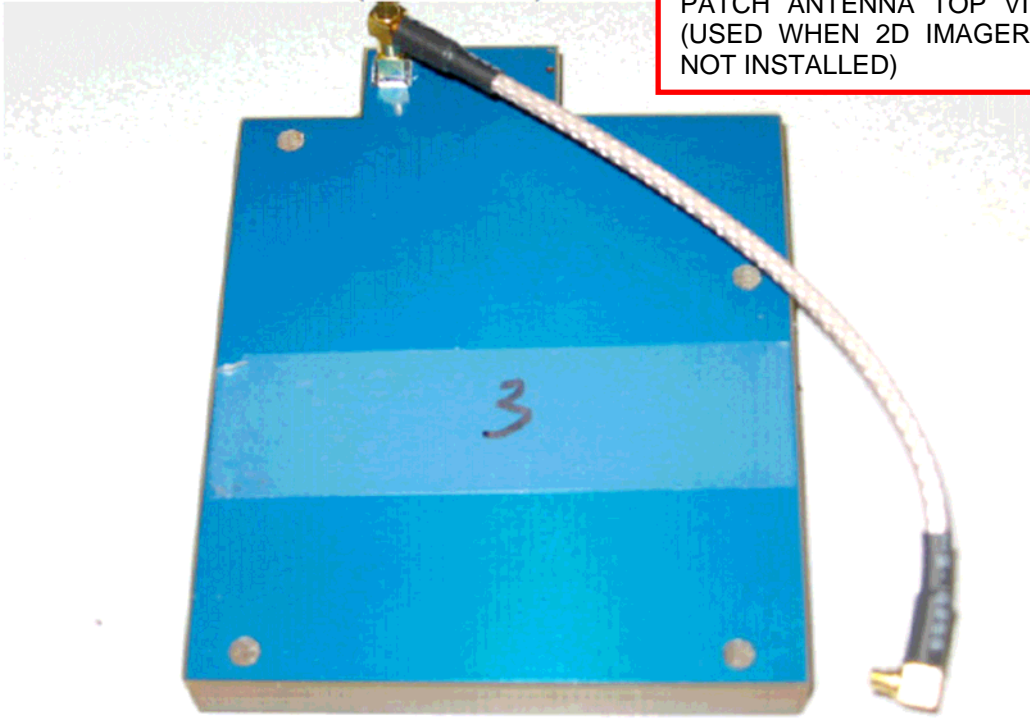
PATCH ANTENNA TOP VIEW
(USED WHEN 2D IMAGER IS
INSTALLED)

Back



PATCH ANTENNA BOTTOM
VIEW (USED WHEN 2D
IMAGER IS INSTALLED)

Authorized Patch Antenna (PN 07558-01) front

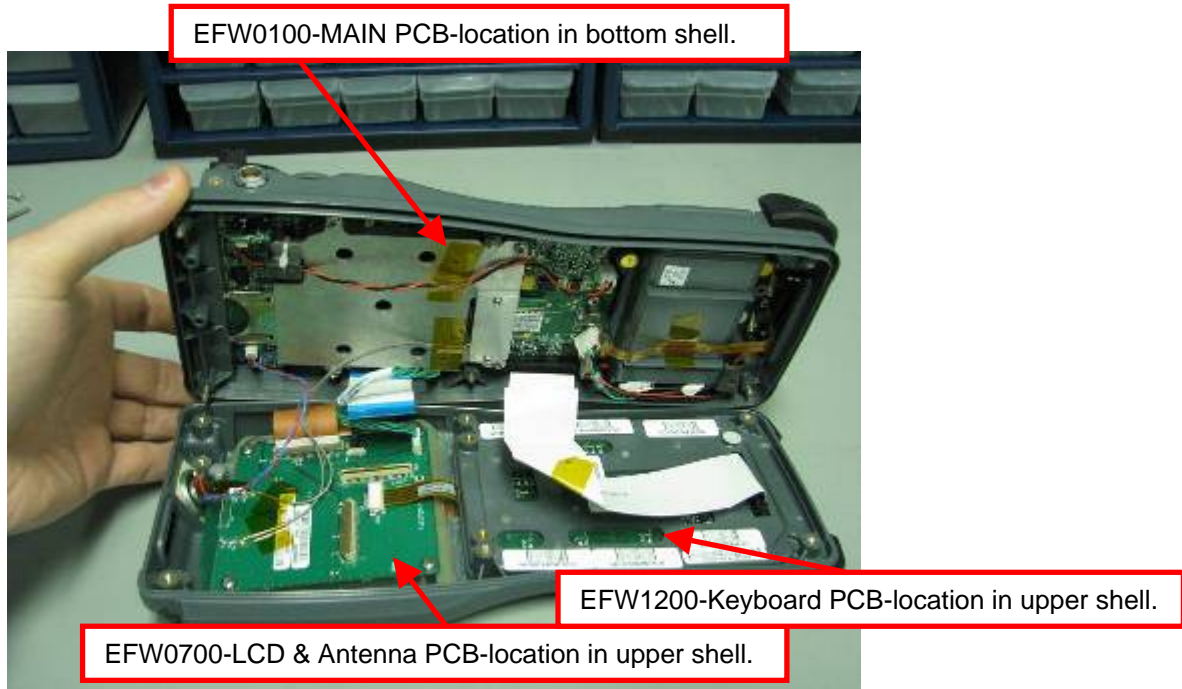


PATCH ANTENNA TOP VIEW
(USED WHEN 2D IMAGER IS
NOT INSTALLED)

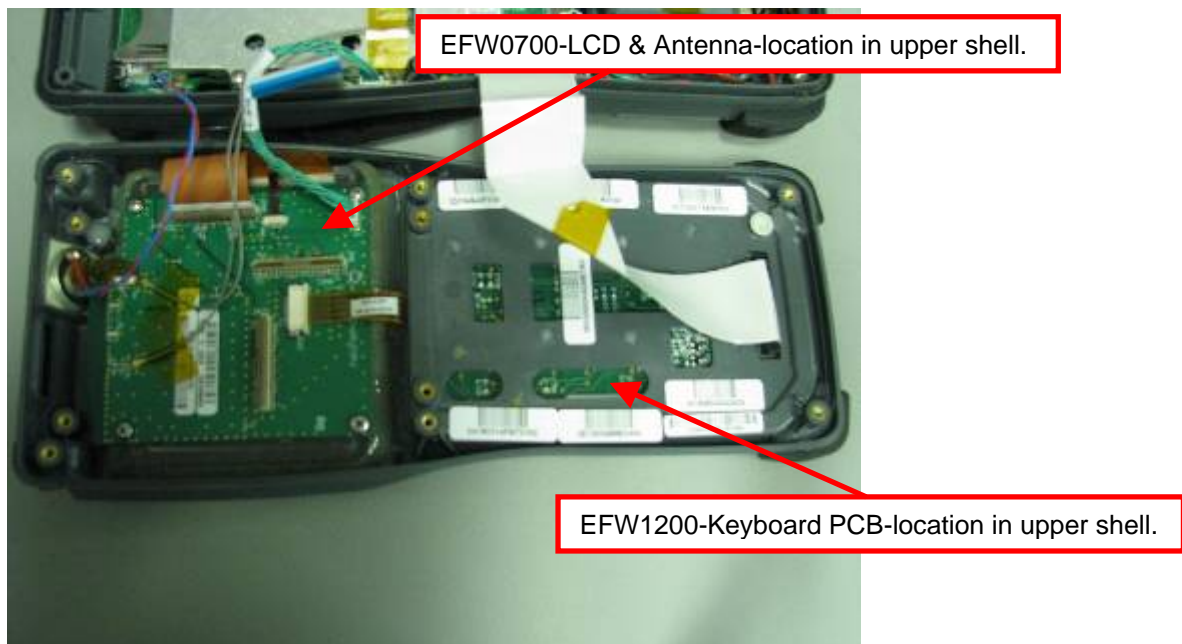
Back



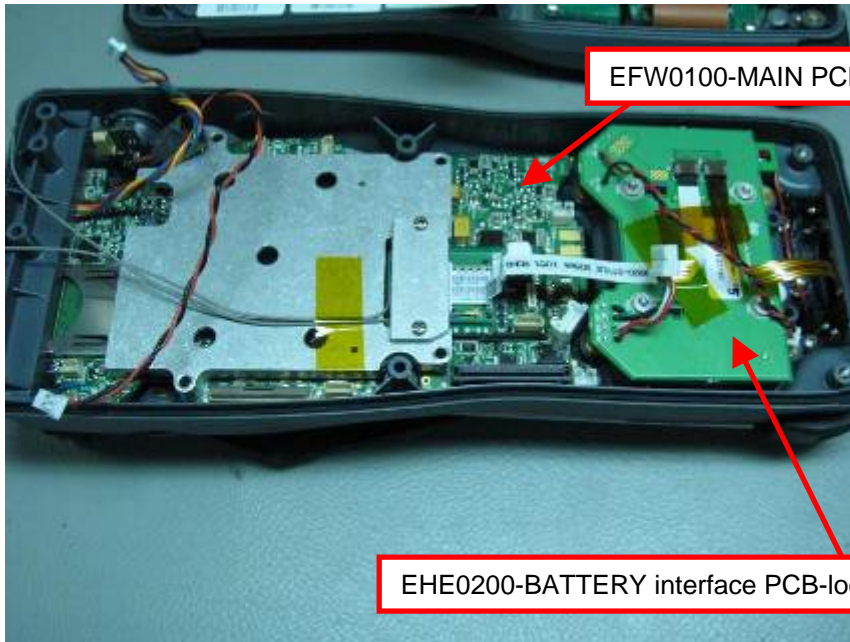
PATCH ANTENNA BOTTOM
VIEW (USED WHEN 2D
IMAGER IS NOT INSTALLED)



Opening view#1



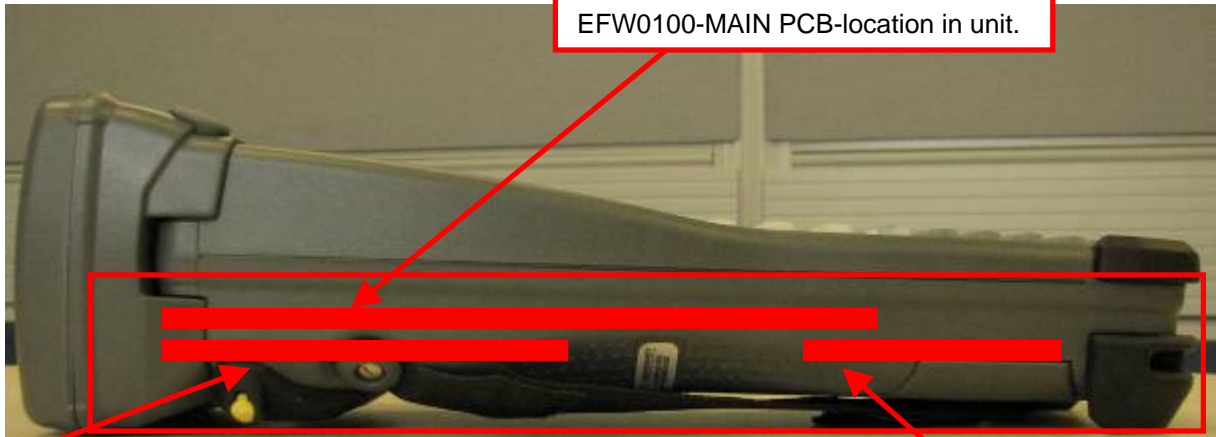
Upper shell inside view



Bottom shell for second battery configuration inside view



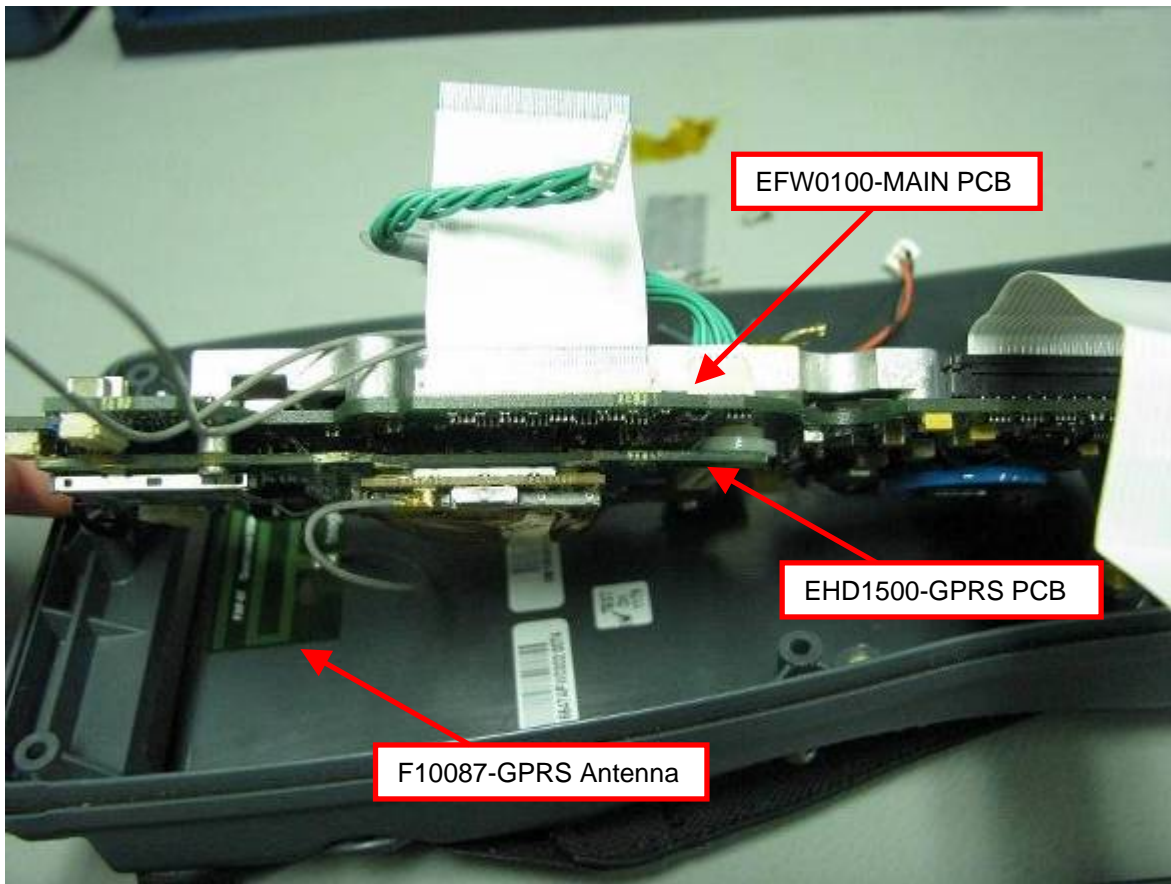
Bottom shell for standard battery configuration inside view



EFW0100-MAIN PCB-location in unit.

EHD1500-GPRS PCB-location in unit.

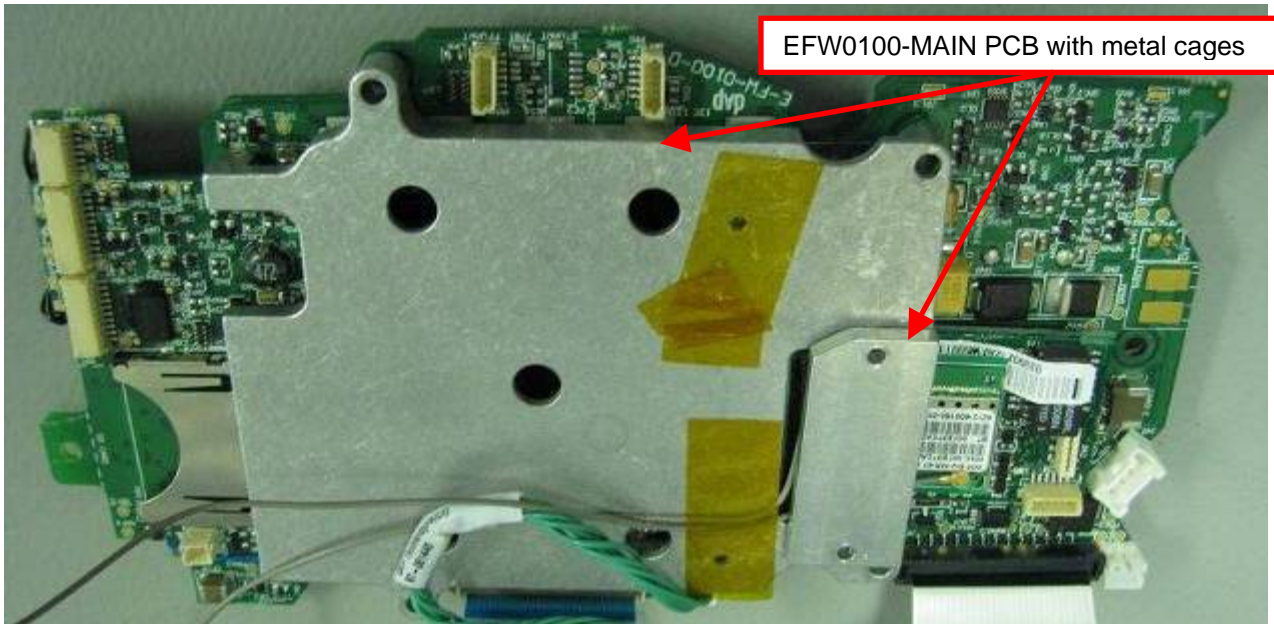
EHE0200-BATTERY interface PCB-location in unit.



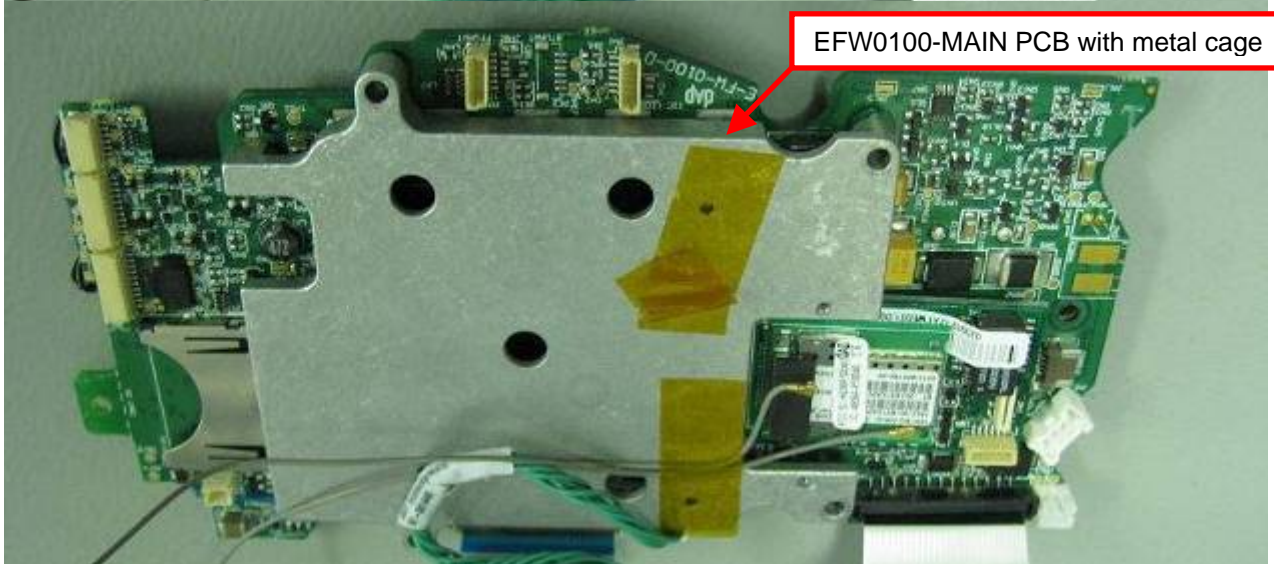
EFW0100-MAIN PCB

EHD1500-GPRS PCB

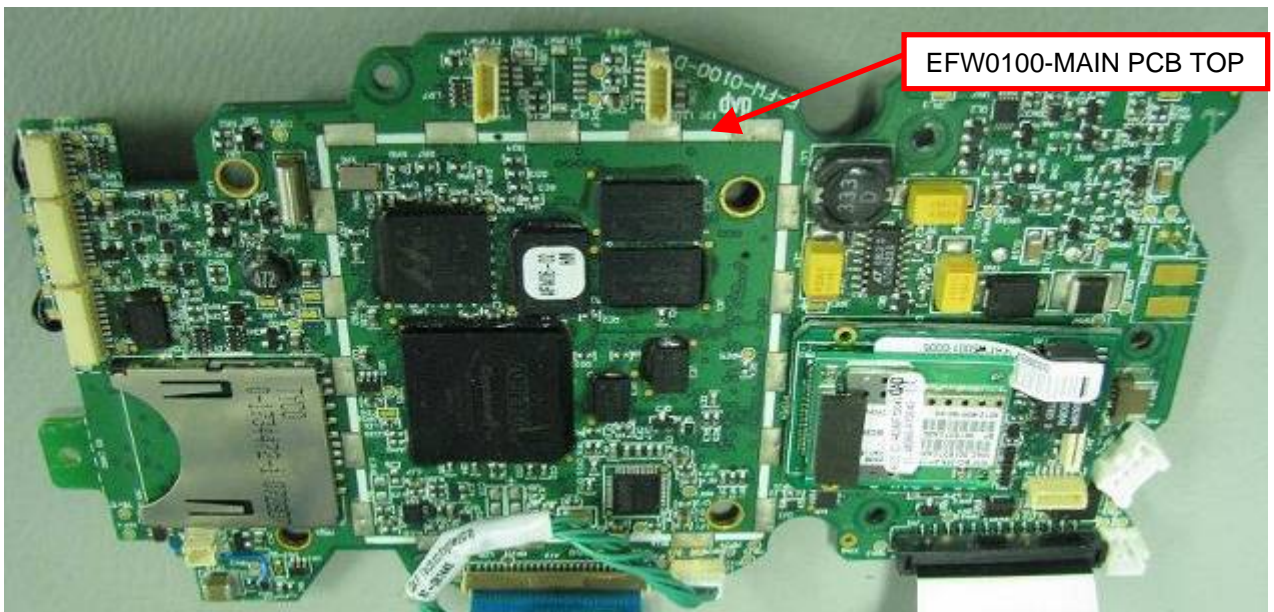
F10087-GPRS Antenna



EFW0100-MAIN PCB with metal cages



EFW0100-MAIN PCB with metal cage



EFW0100-MAIN PCB TOP



EFW0100-MAIN PCB BOTTOM

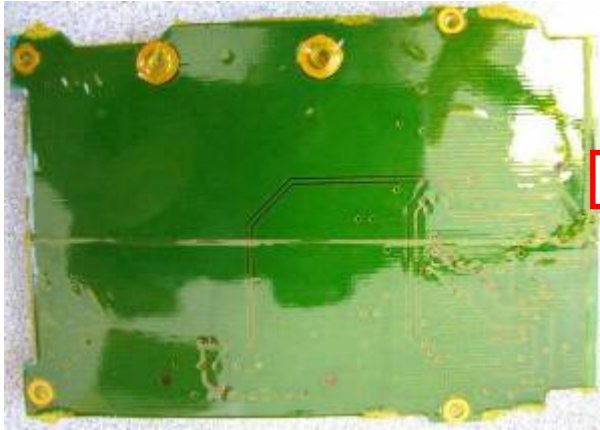
EHD1500-GPRS PCB-TOP



EFW0100-MAIN PCB BOTTOM



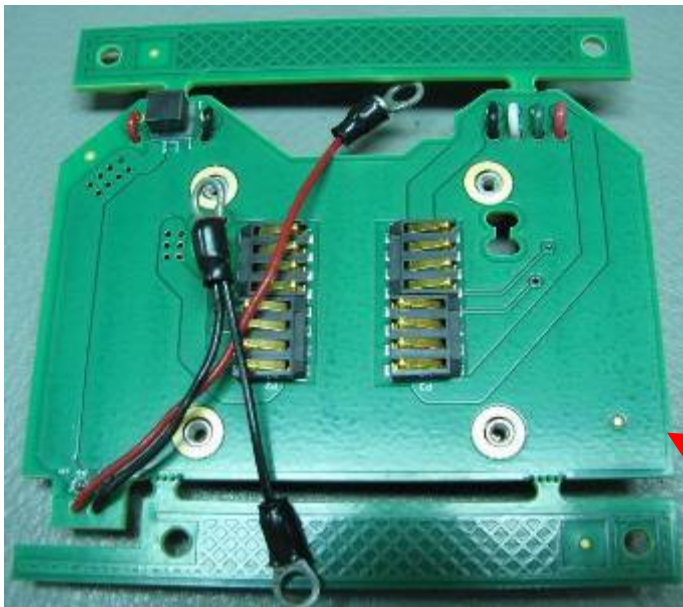
EHD1500-GPRS PCB-Top side.



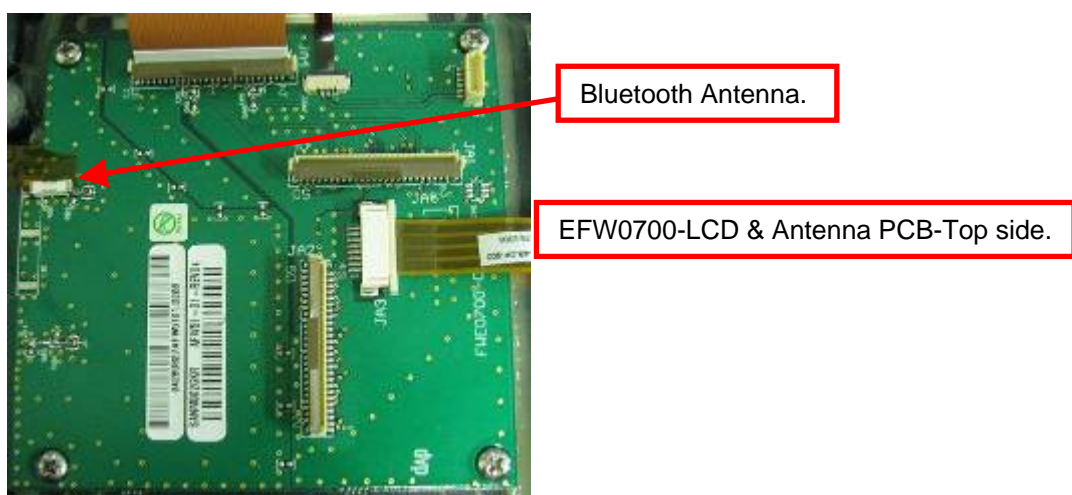
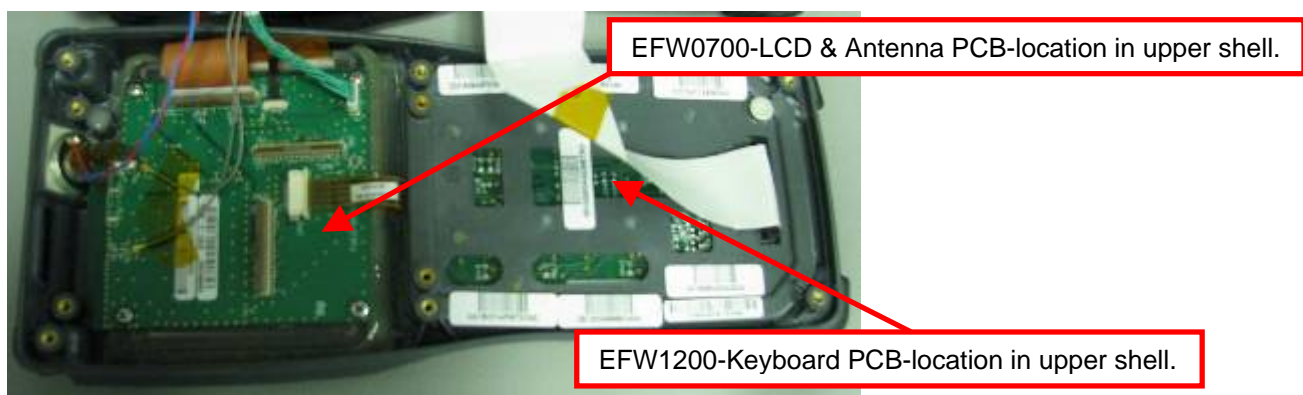
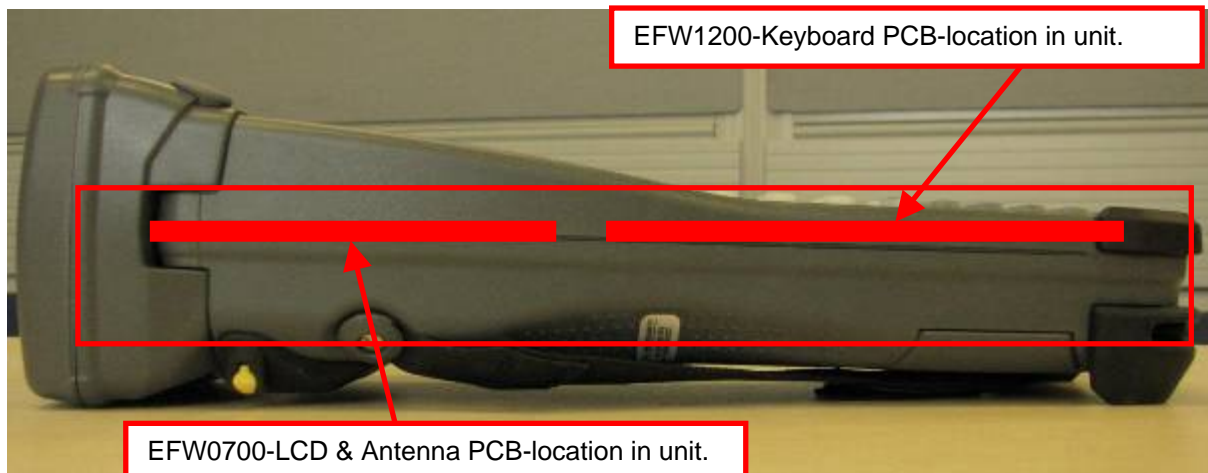
EHD1500-GPRS PCB-Bottom side.

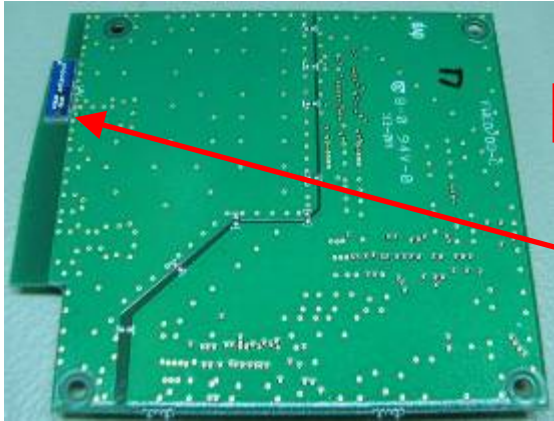


EHE0200-BATTERY interface PCB-Top side with crackers to be removed before installation in unit.



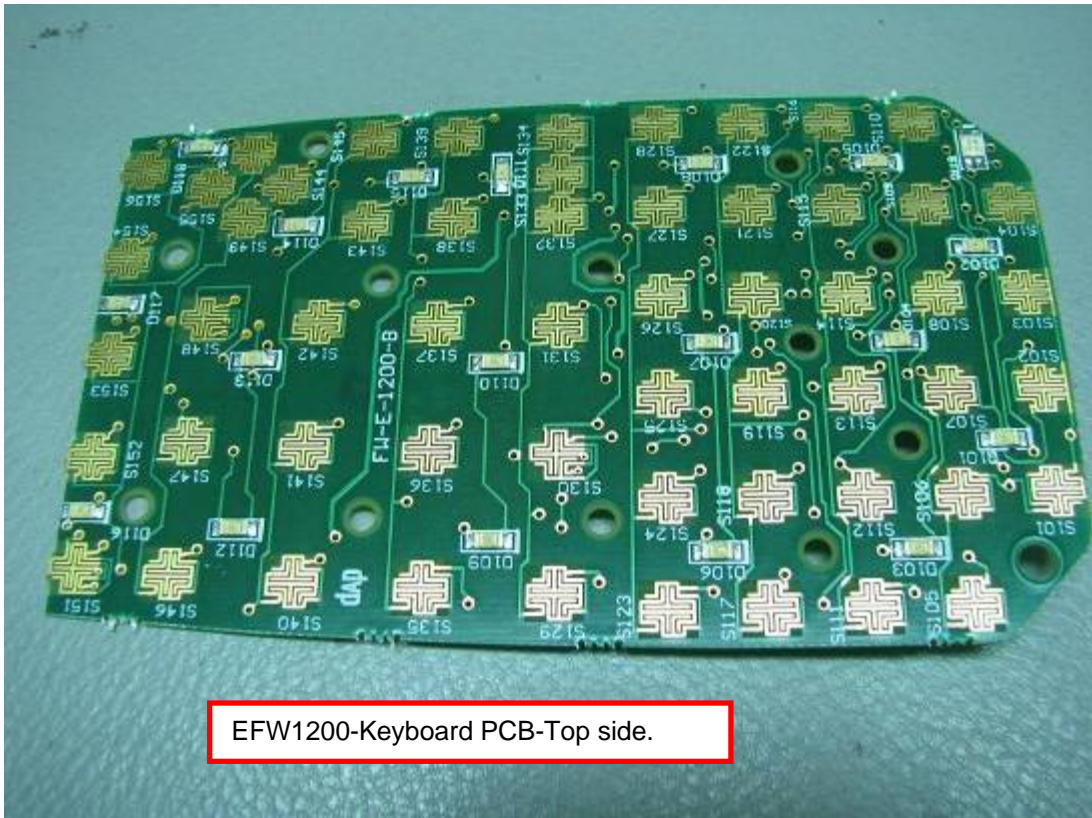
EHE0200-BATTERY interface PCB-Bottom side with crackers to be removed before installation in unit.





EFW0700-LCD & Antenna PCB-Bottom side.

WiFi Antenna.



EFW1200-Keyboard PCB-Top side.



EFW1200-Keyboard PCB-Bottom side.