

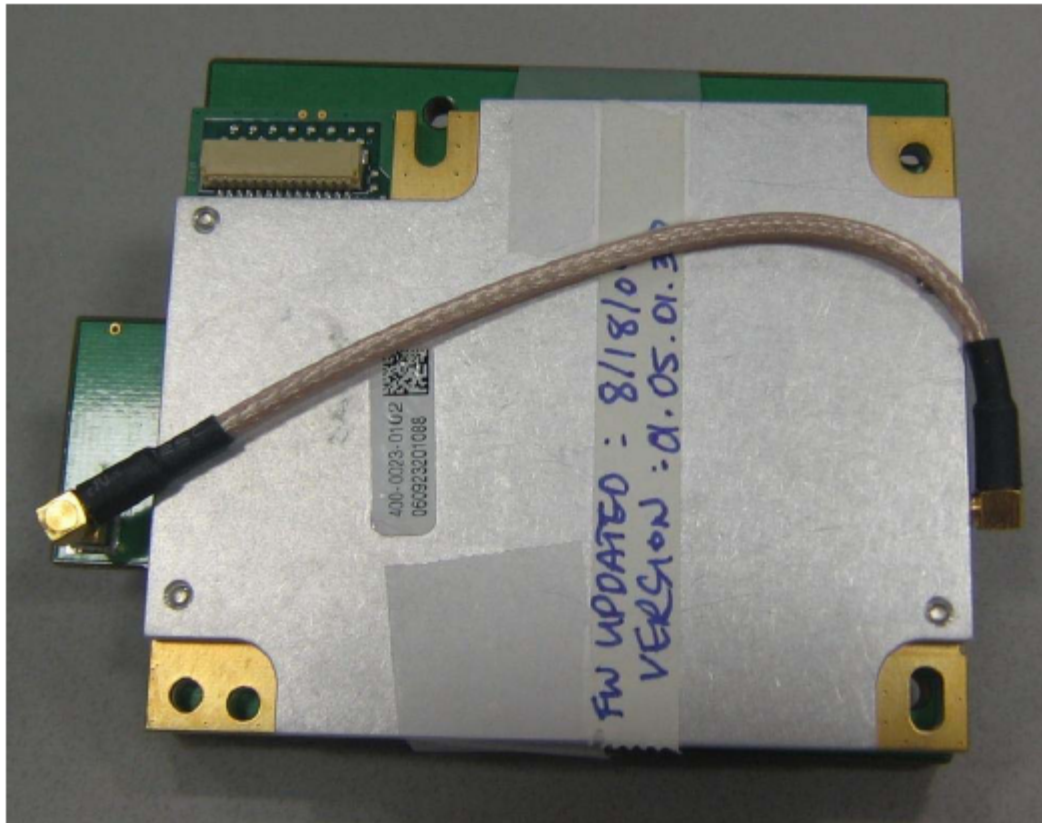
Module and plastic enclosure



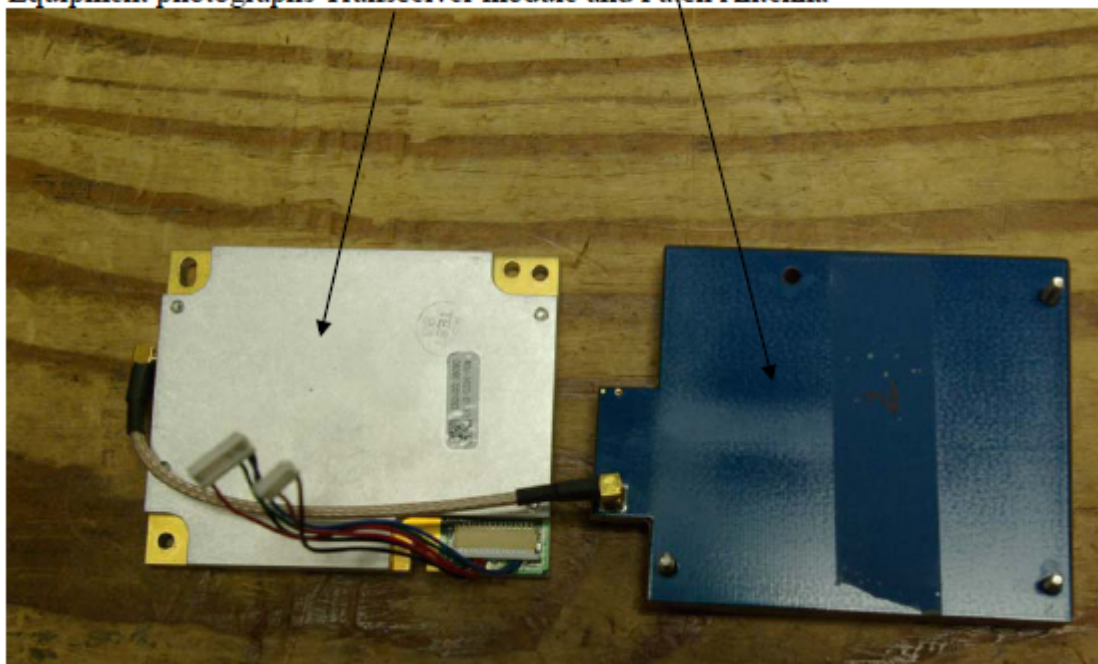
Transceiver module connected to support equipment



Transceiver module attached to antenna with shield

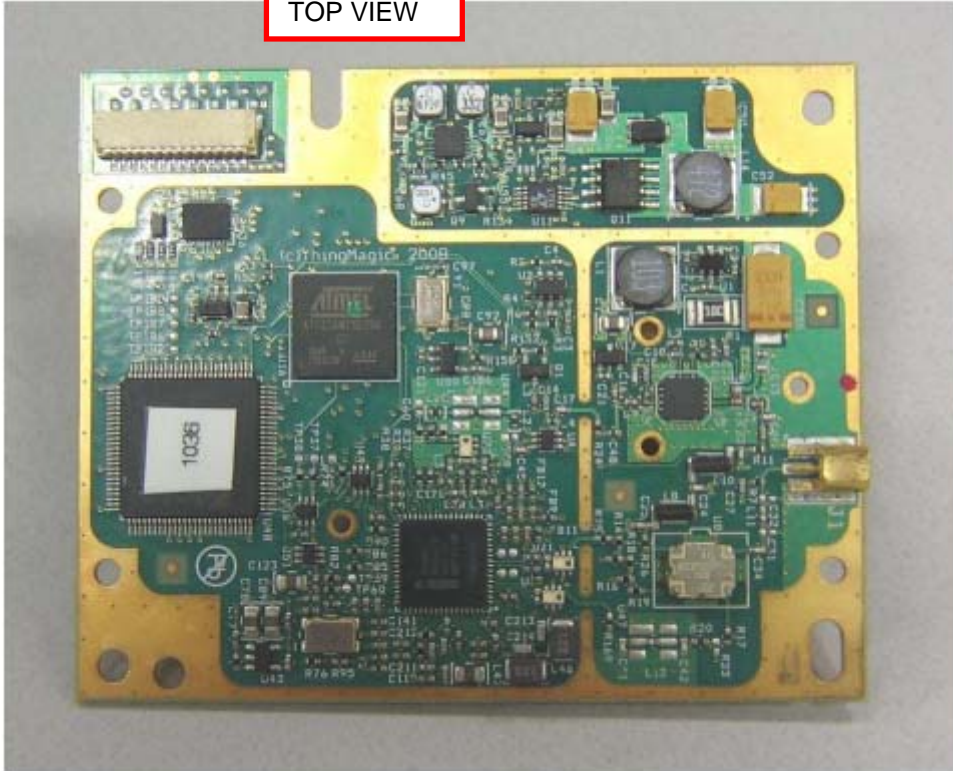


Equipment photographs Transceiver module and Patch Antenna

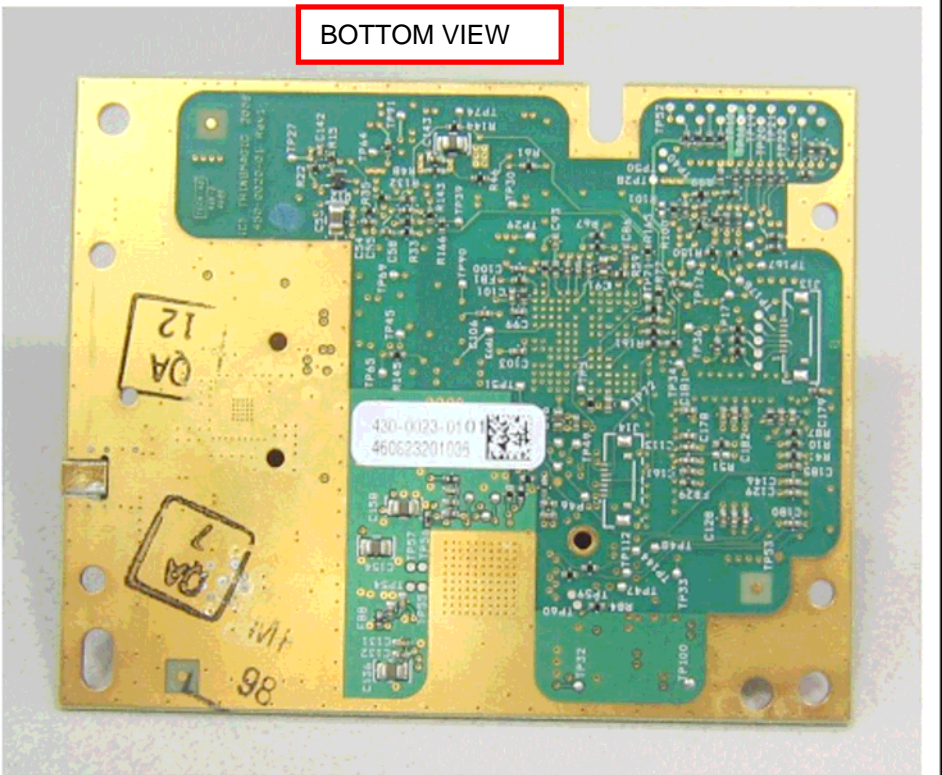


Transceiver PCB

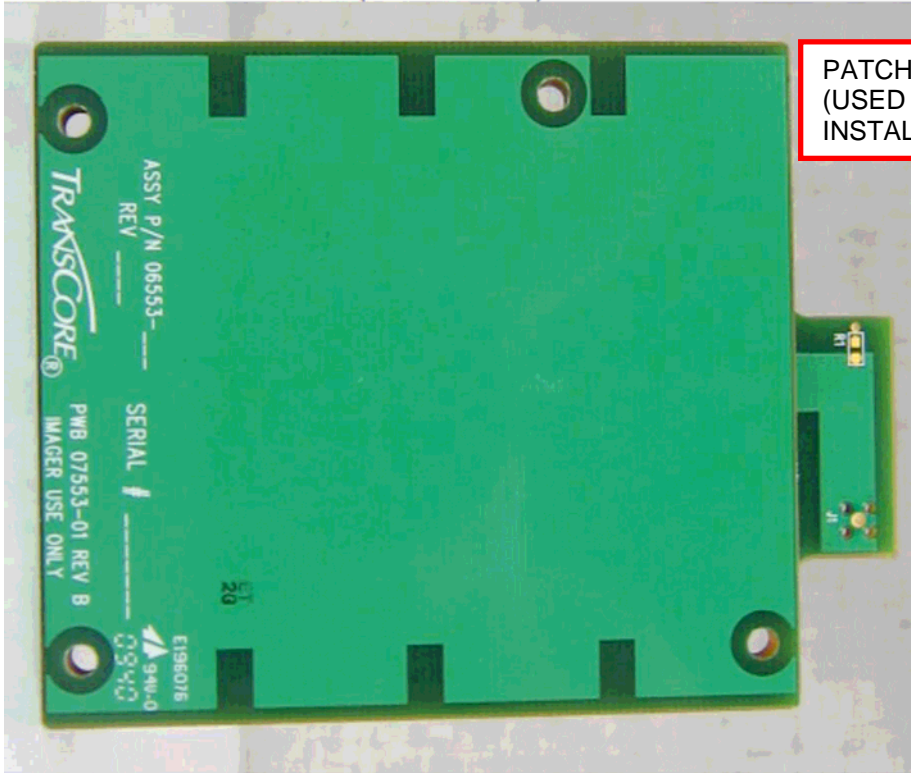
TOP VIEW



BOTTOM VIEW

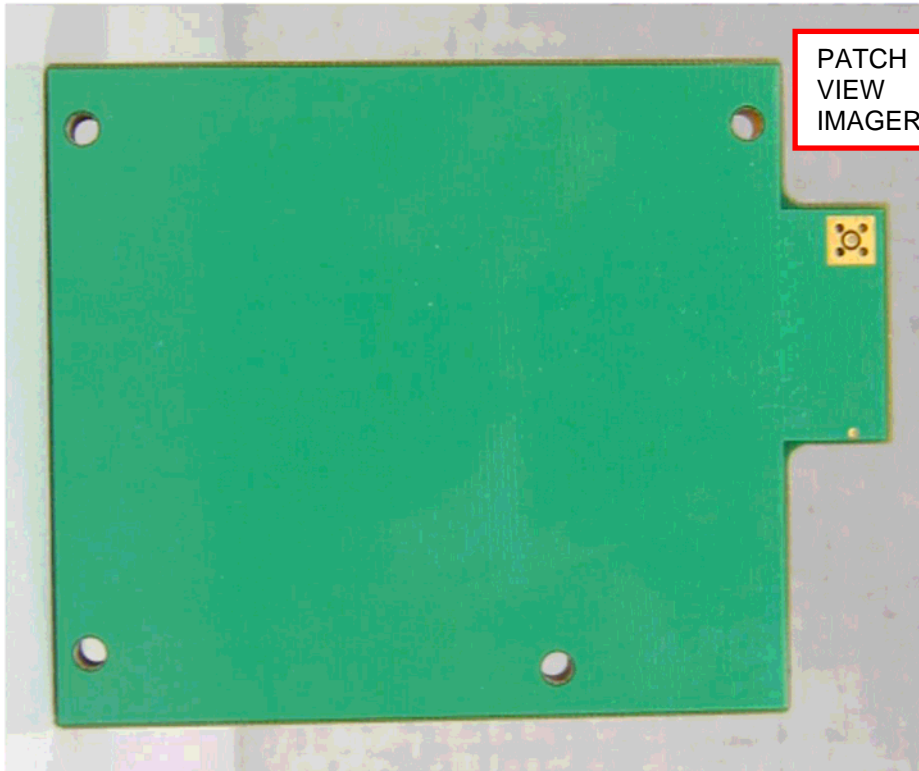


Authorized Patch Antenna (PN 07553-01) front



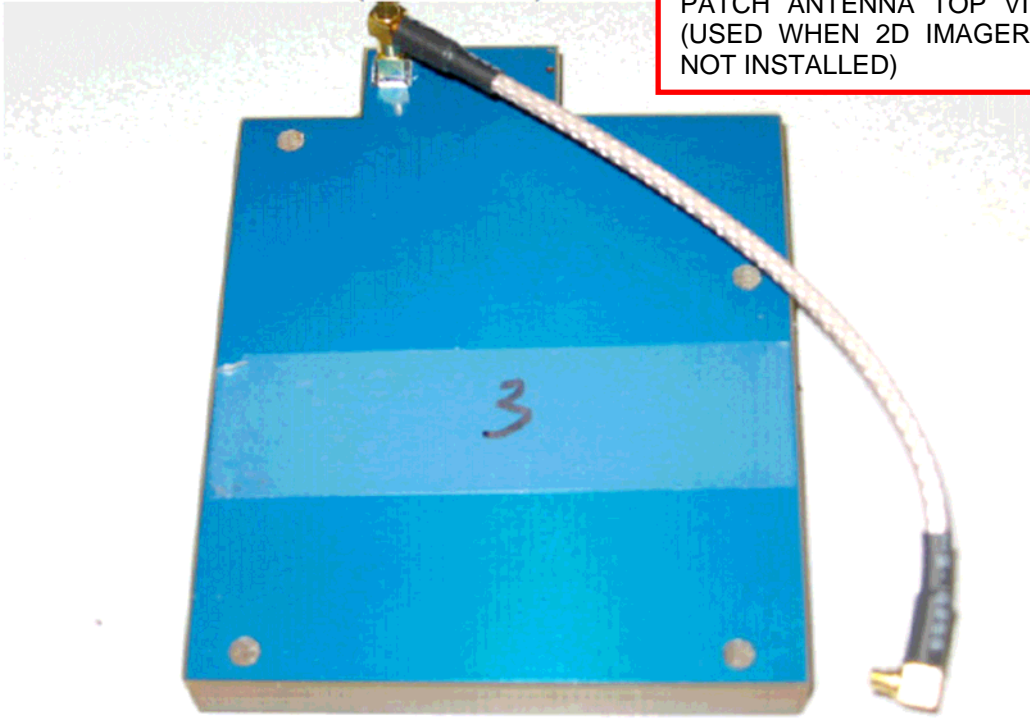
PATCH ANTENNA TOP VIEW
(USED WHEN 2D IMAGER IS
INSTALLED)

Back



PATCH ANTENNA BOTTOM
VIEW (USED WHEN 2D
IMAGER IS INSTALLED)

Authorized Patch Antenna (PN 07558-01) front

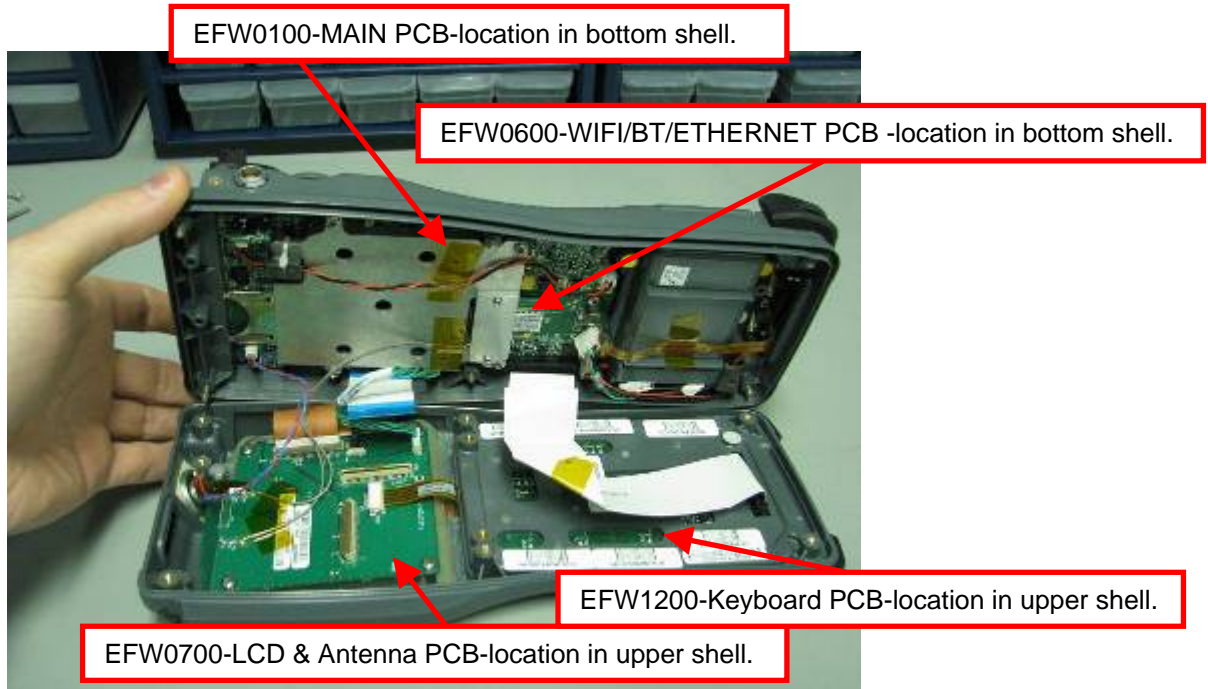


PATCH ANTENNA TOP VIEW
(USED WHEN 2D IMAGER IS
NOT INSTALLED)

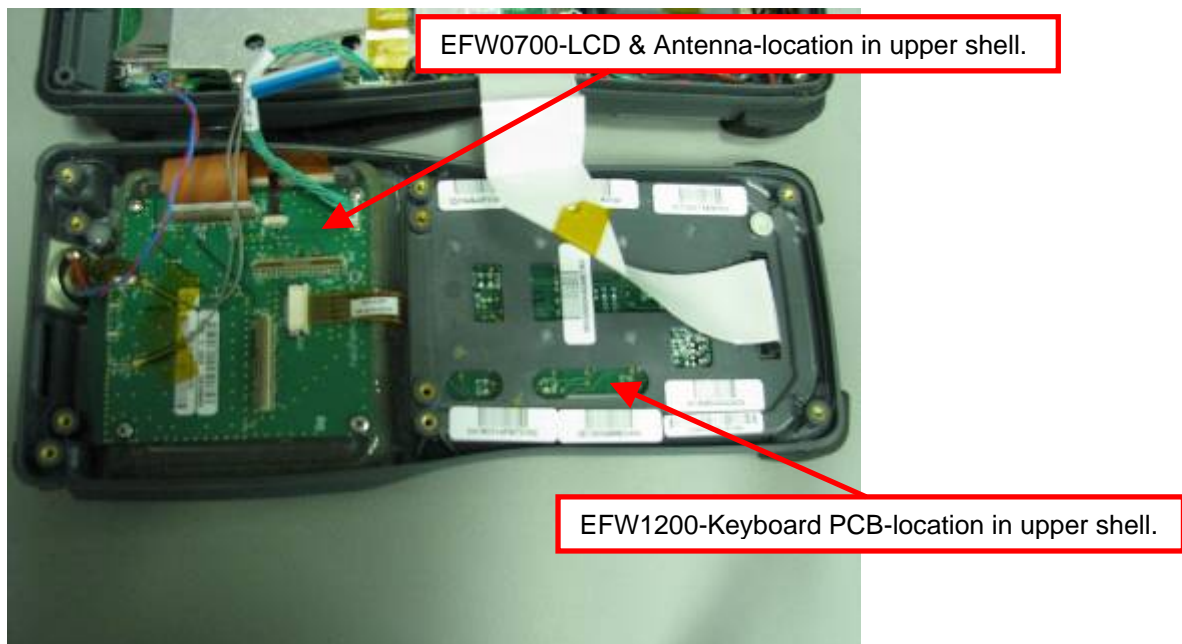
Back



PATCH ANTENNA BOTTOM
VIEW (USED WHEN 2D
IMAGER IS NOT INSTALLED)

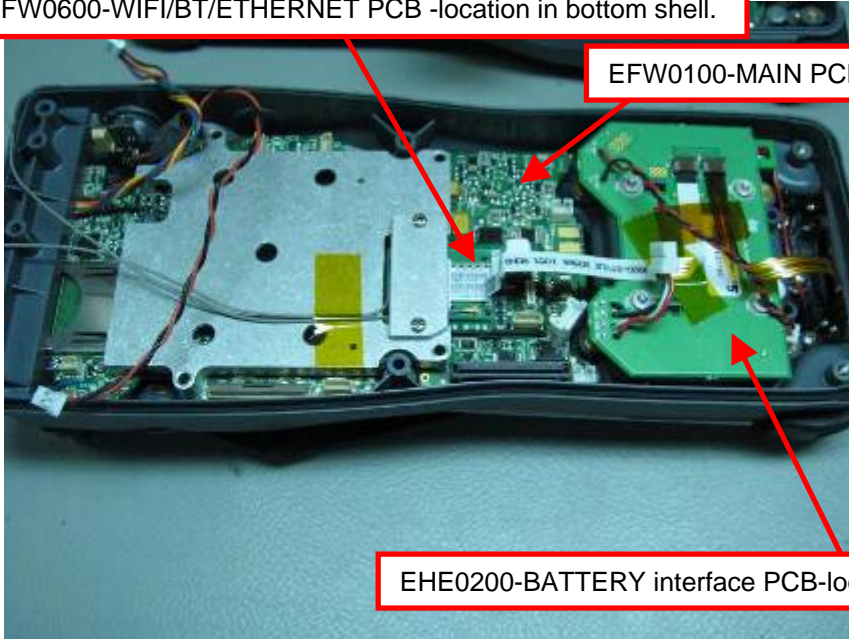


Opening view#1



Upper shell inside view

EFW0600-WIFI/BT/ETHERNET PCB -location in bottom shell.

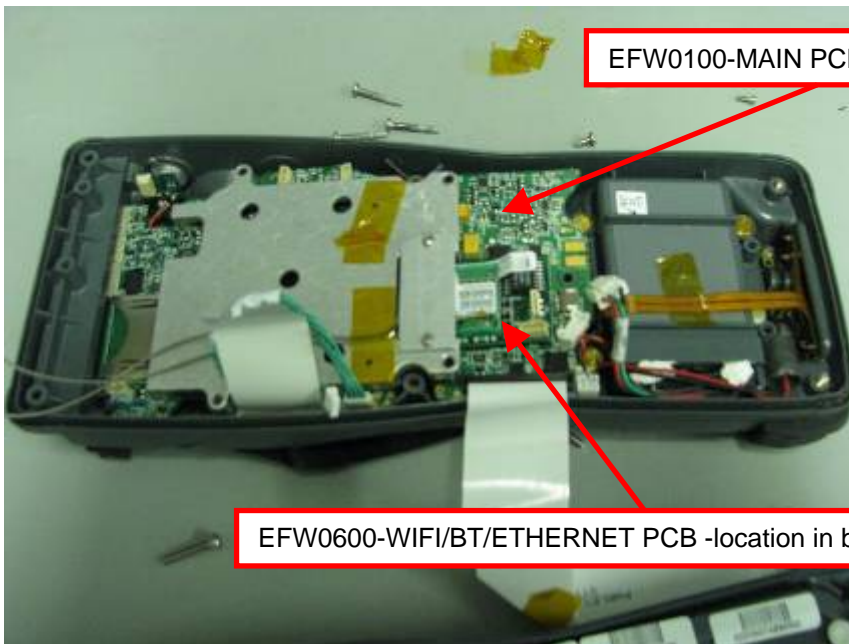


EFW0100-MAIN PCB-location in bottom shell.

EHE0200-BATTERY interface PCB-location in bottom shell.

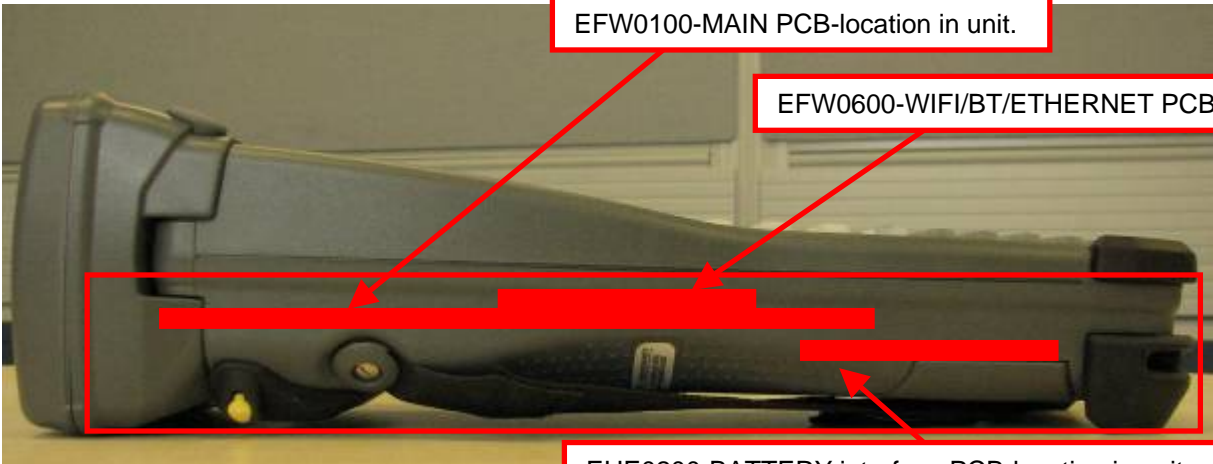
Bottom shell for second battery configuration inside view

EFW0100-MAIN PCB-location in bottom shell.



EFW0600-WIFI/BT/ETHERNET PCB -location in bottom shell.

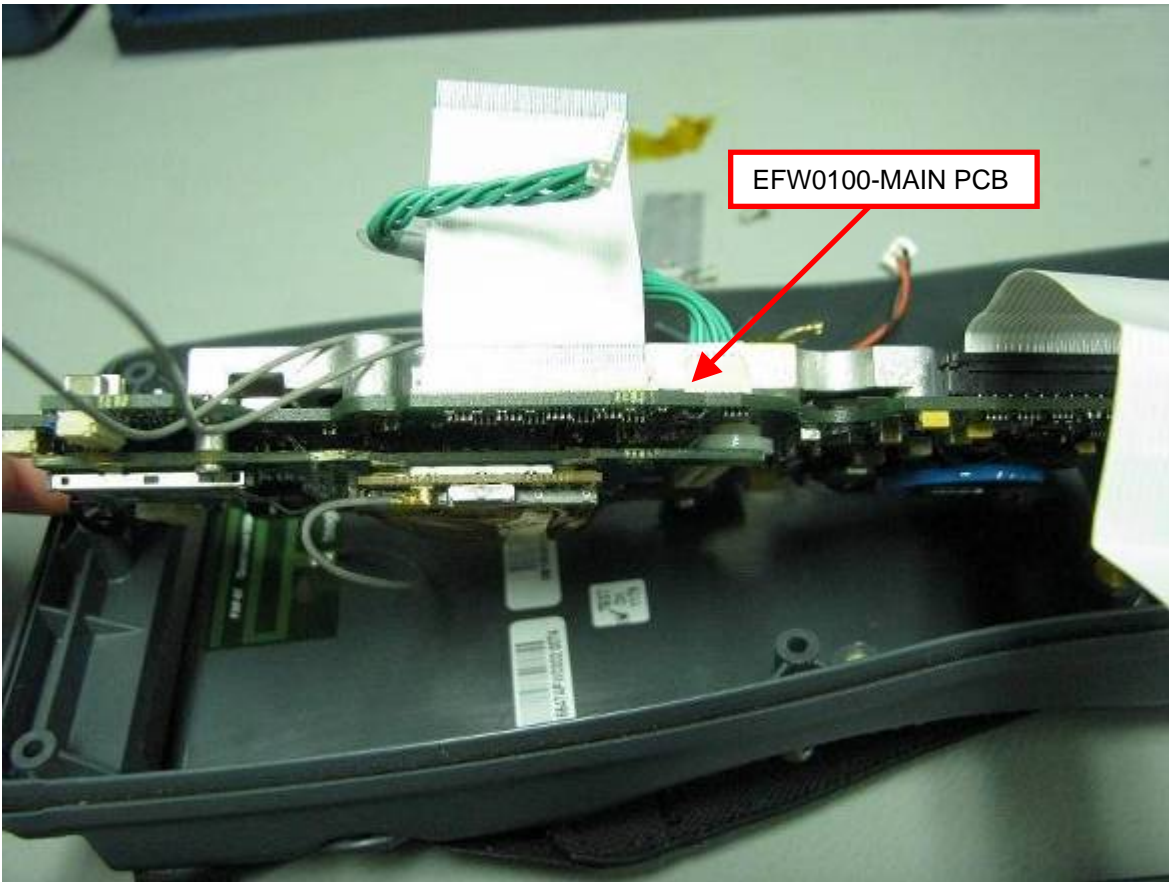
Bottom shell for standard battery configuration inside view



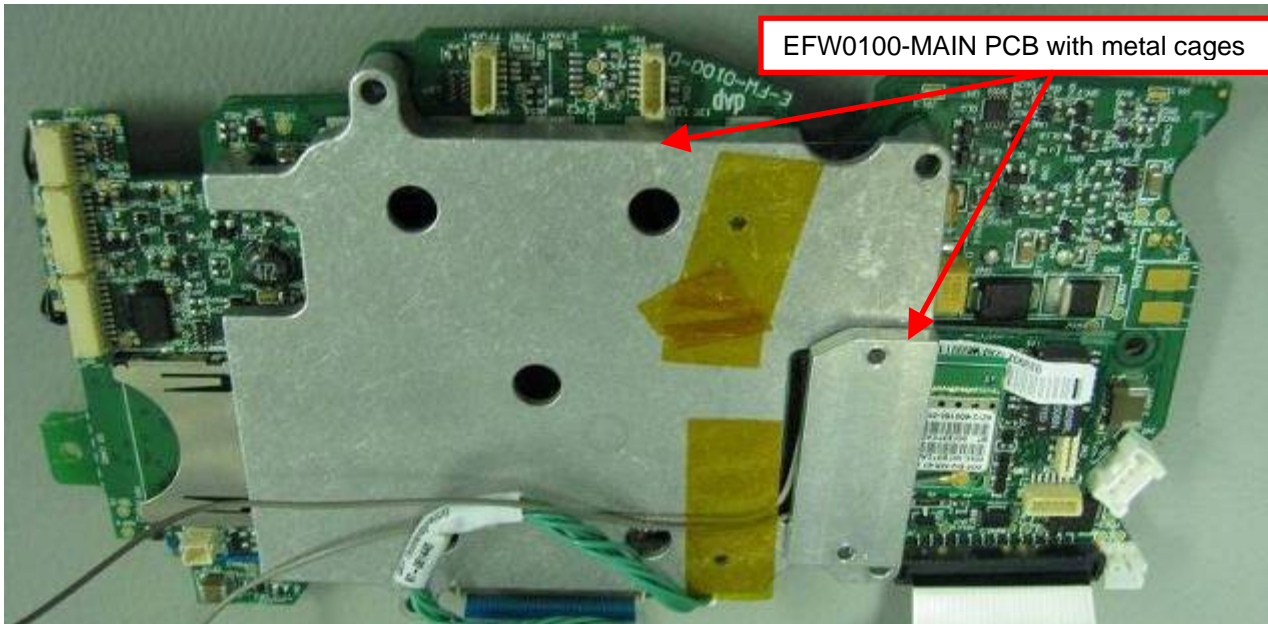
EFW0100-MAIN PCB-location in unit.

EFW0600-WIFI/BT/ETHERNET PCB

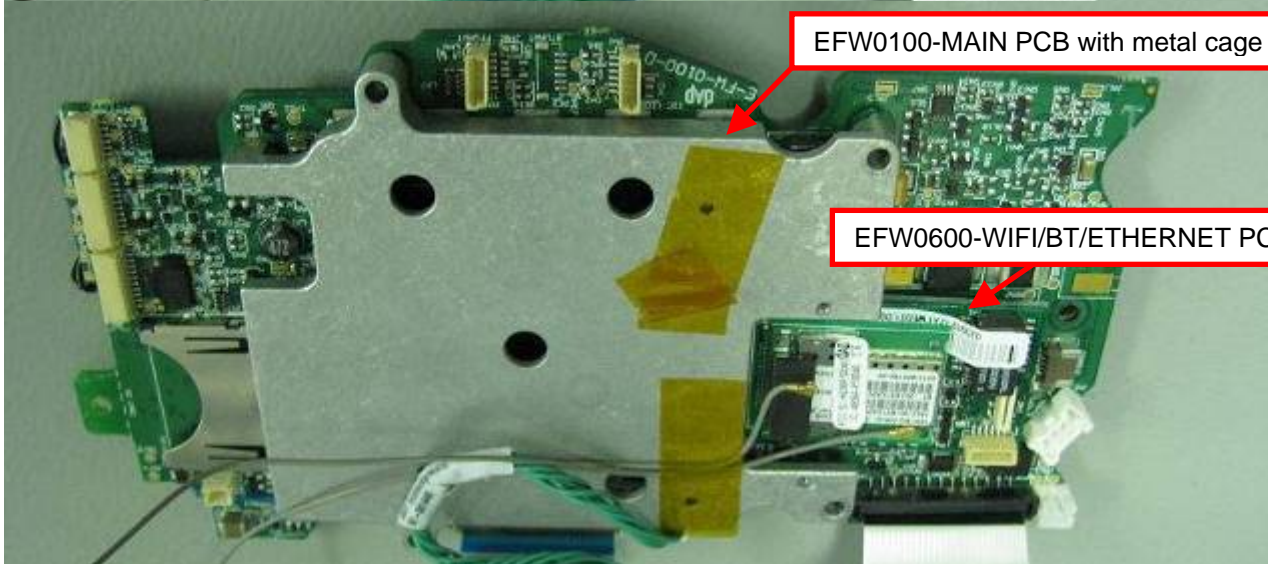
EHE0200-BATTERY interface PCB-location in unit.



EFW0100-MAIN PCB

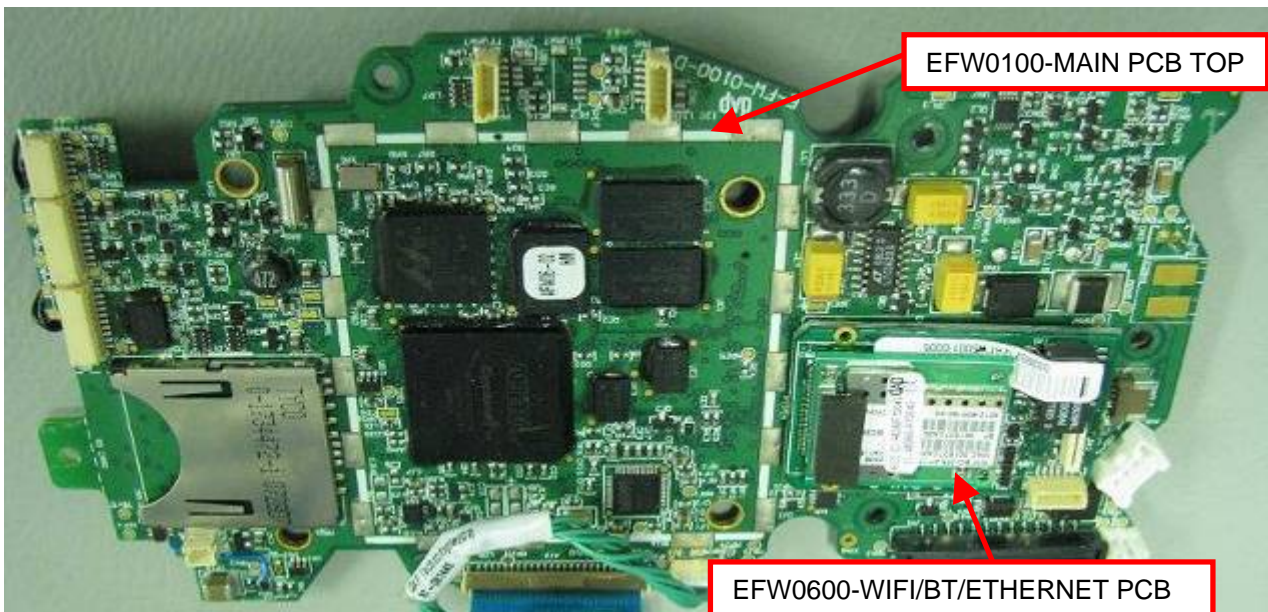


EFW0100-MAIN PCB with metal cages



EFW0100-MAIN PCB with metal cage

EFW0600-WIFI/BT/ETHERNET PCB

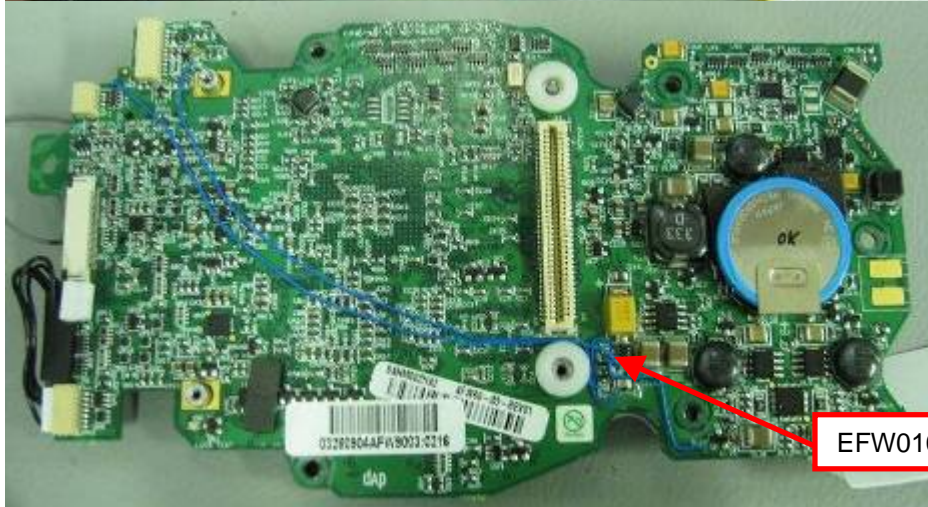


EFW0100-MAIN PCB TOP

EFW0600-WIFI/BT/ETHERNET PCB



EFW0100-MAIN PCB BOTTOM

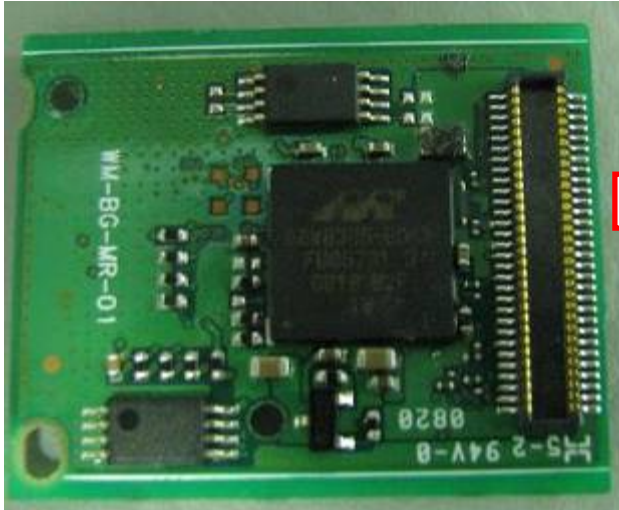


EFW0100-MAIN PCB BOTTOM



F10040-WIFI/BT COMBO PCB TOP

EFW0600-WIFI/BT/ETHERNET PCB TOP



F10040-WIFI/BT COMBO PCB BOTTOM



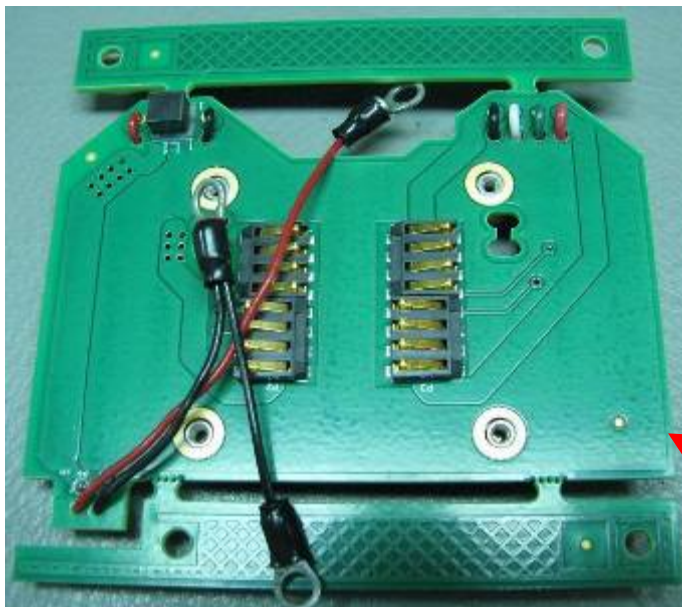
EFW0600-WIFI/BT/ETHERNET PCB TOP



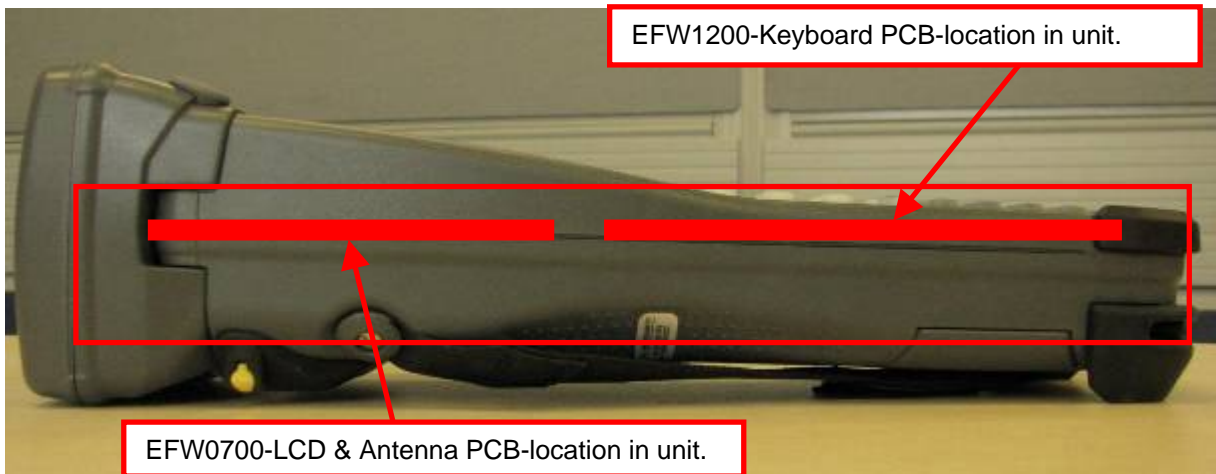
EFW0600-WIFI/BT/ETHERNET PCB BOTTOM



EHE0200-BATTERY interface PCB-Top side with crackers to be removed before installation in unit.

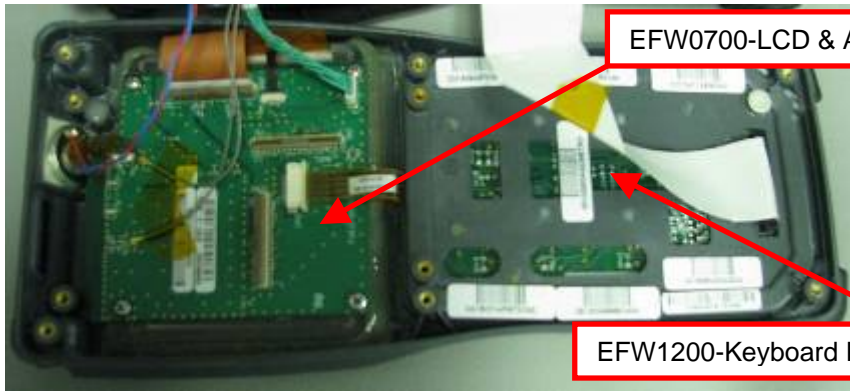


EHE0200-BATTERY interface PCB-Bottom side with crackers to be removed before installation in unit.



EFW1200-Keyboard PCB-location in unit.

EFW0700-LCD & Antenna PCB-location in unit.



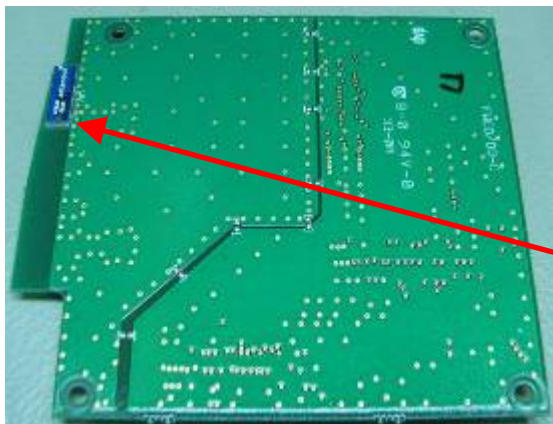
EFW0700-LCD & Antenna PCB-location in upper shell.

EFW1200-Keyboard PCB-location in upper shell.



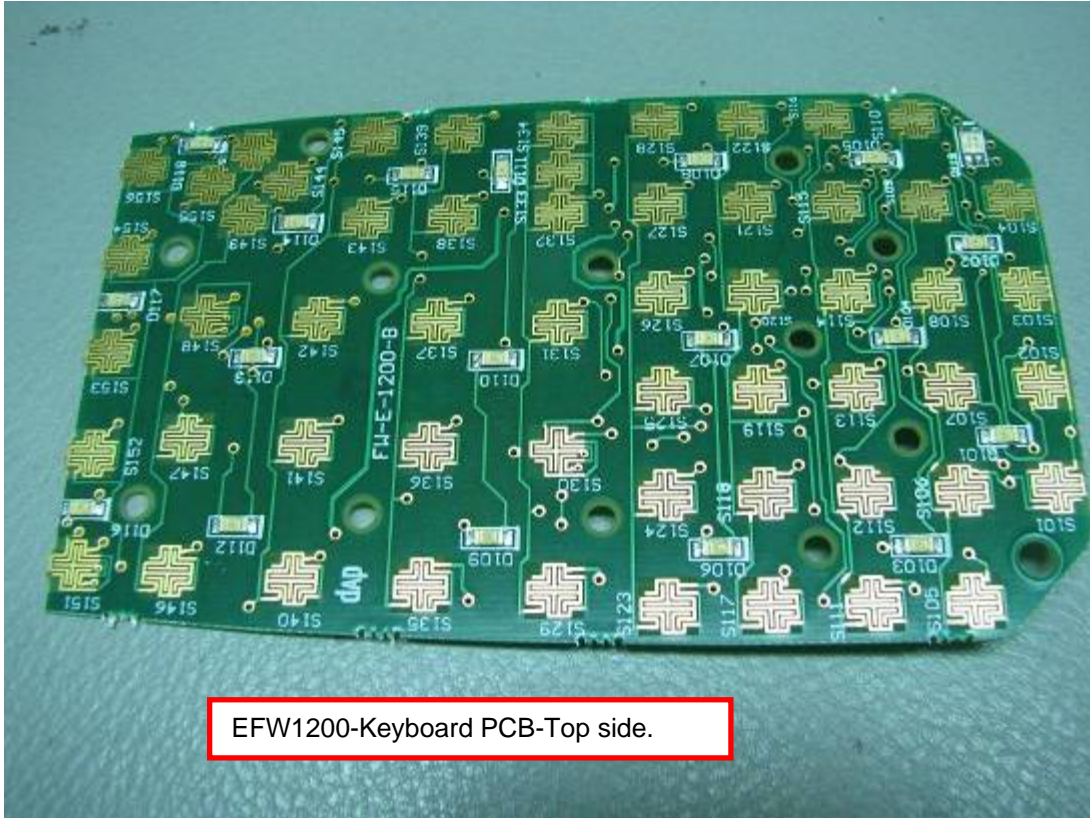
Bluetooth Antenna.

EFW0700-LCD & Antenna PCB-Top side.



EFW0700-LCD & Antenna PCB-Bottom side.

WIFI Antenna.



EFW1200-Keyboard PCB-Top side.



EFW1200-Keyboard PCB-Bottom side.