

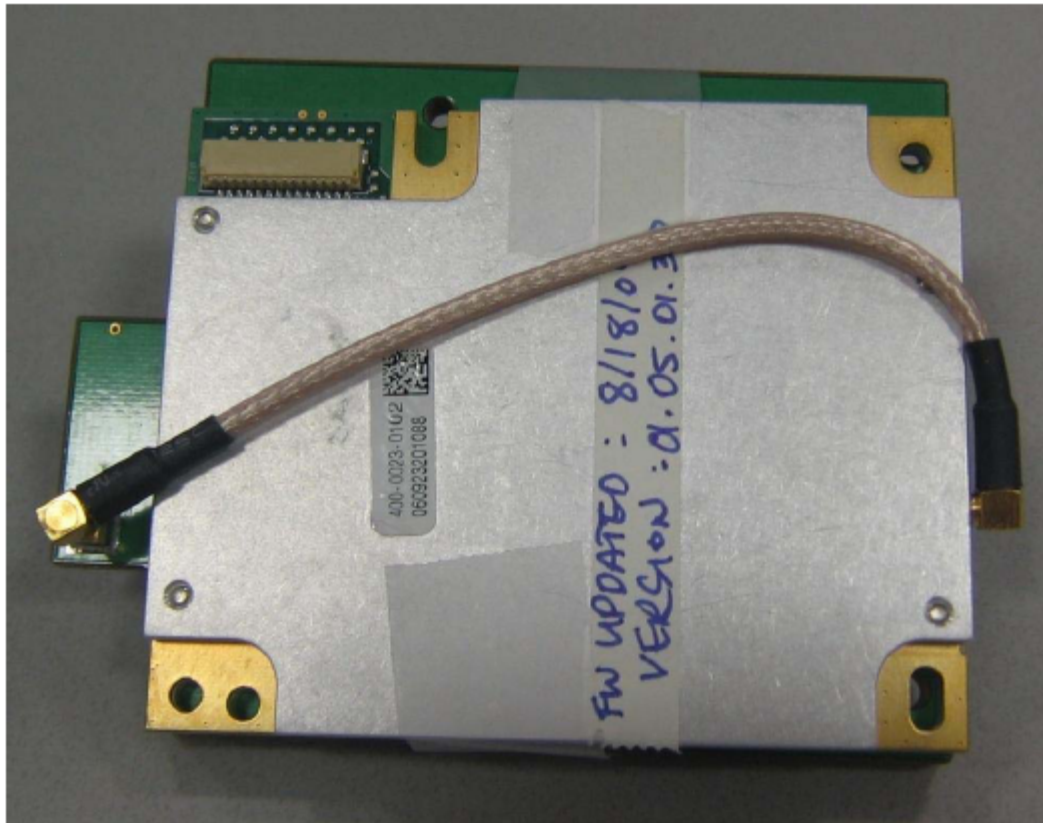
Module and plastic enclosure



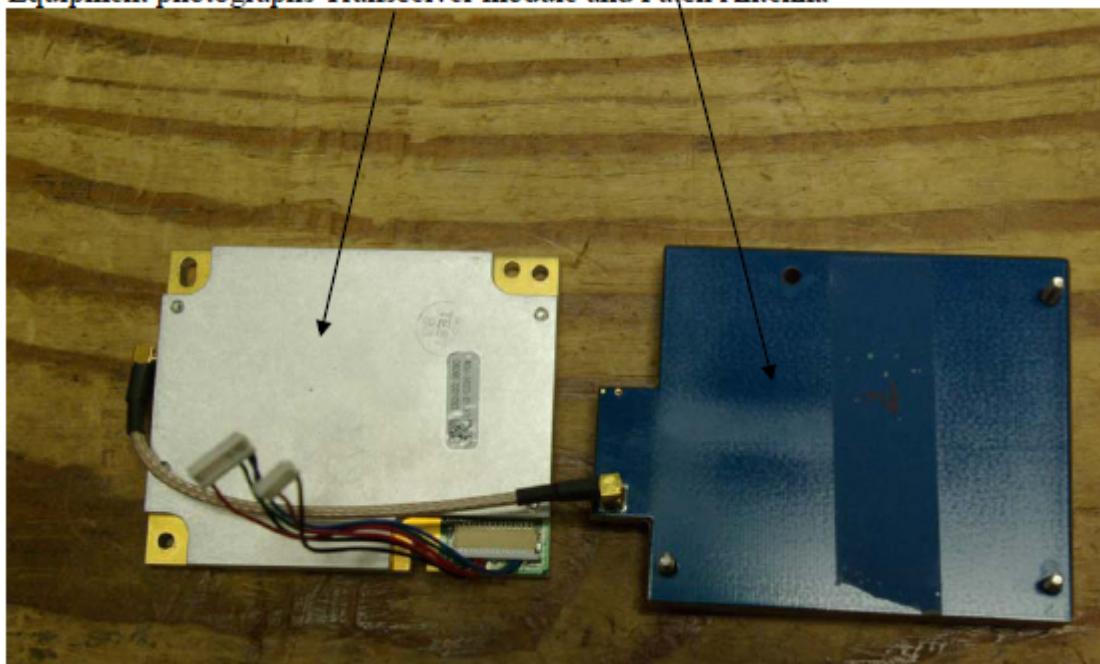
Transceiver module connected to support equipment



Transceiver module attached to antenna with shield

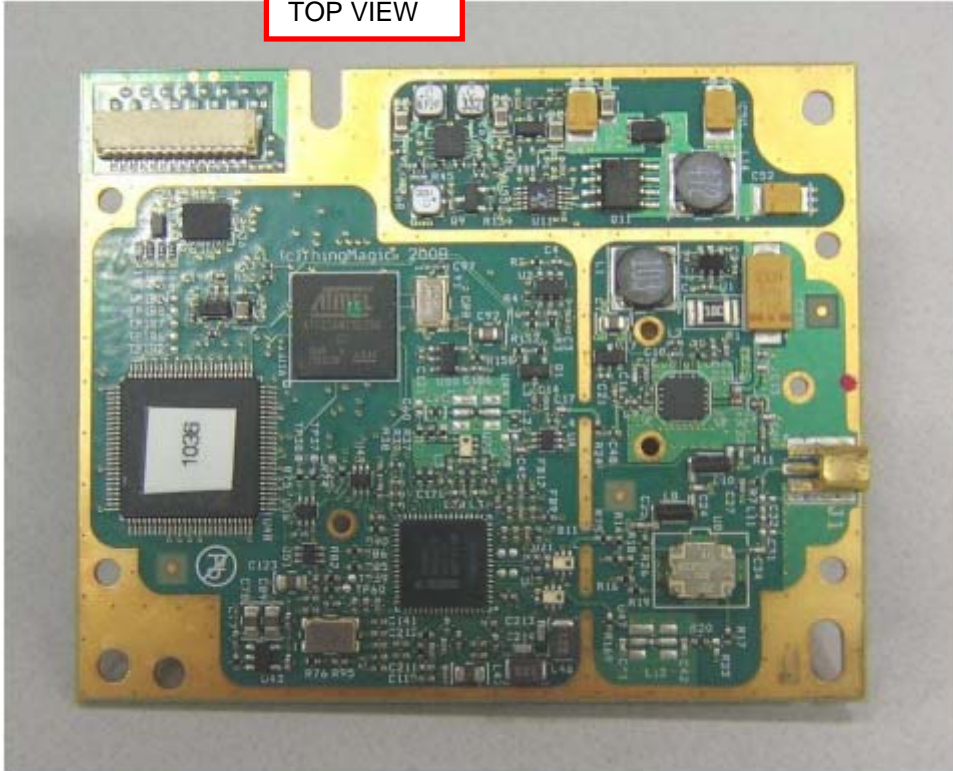


Equipment photographs Transceiver module and Patch Antenna

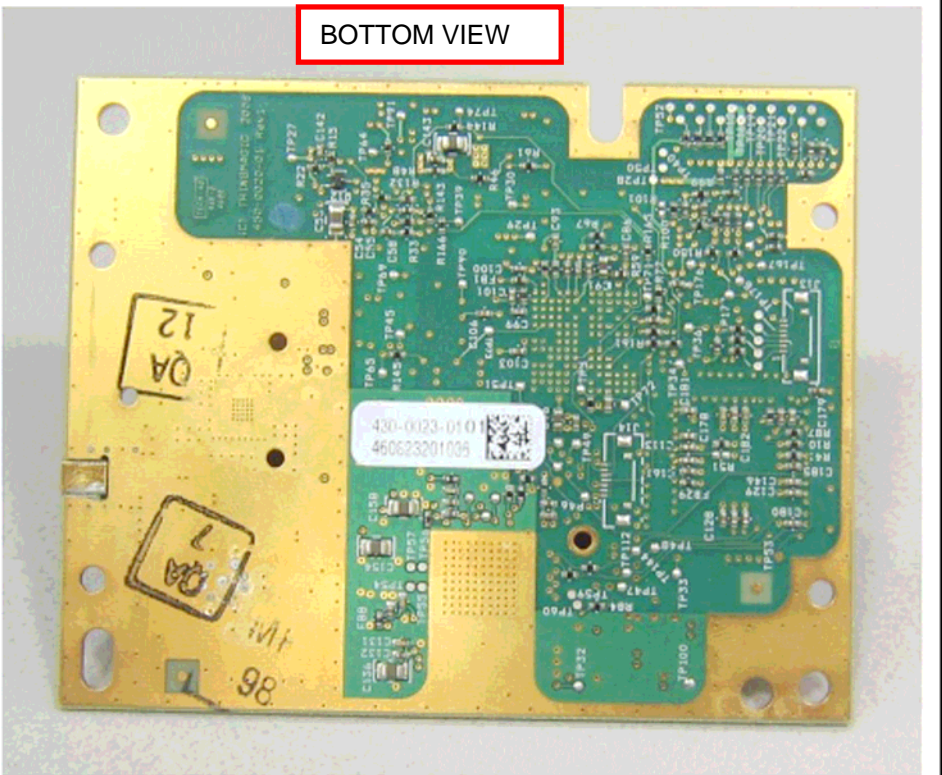


Transceiver PCB

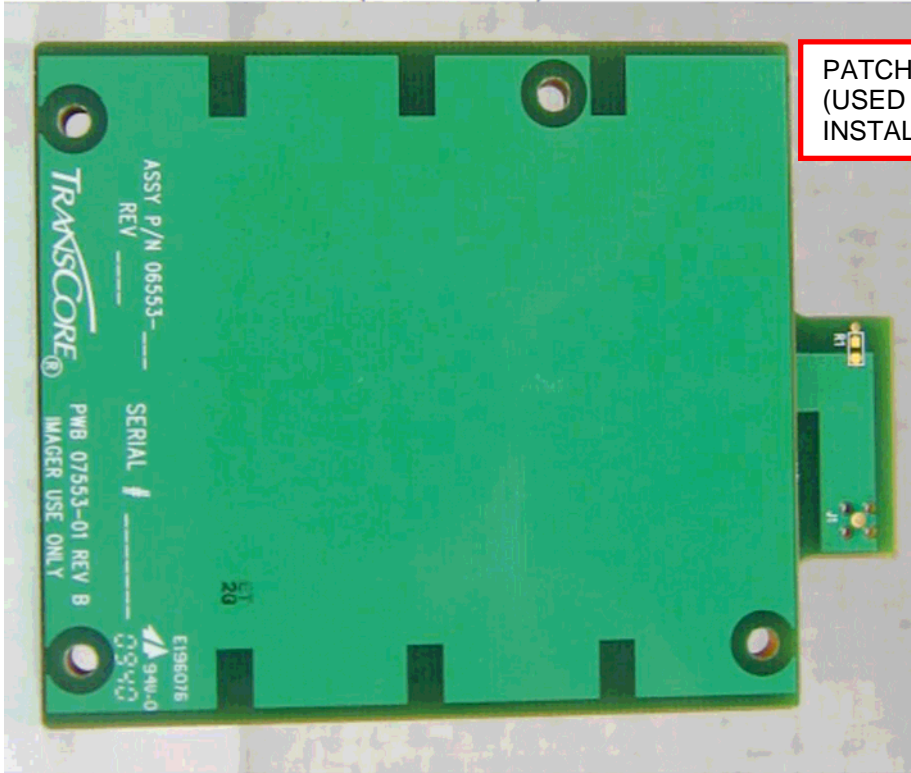
TOP VIEW



BOTTOM VIEW

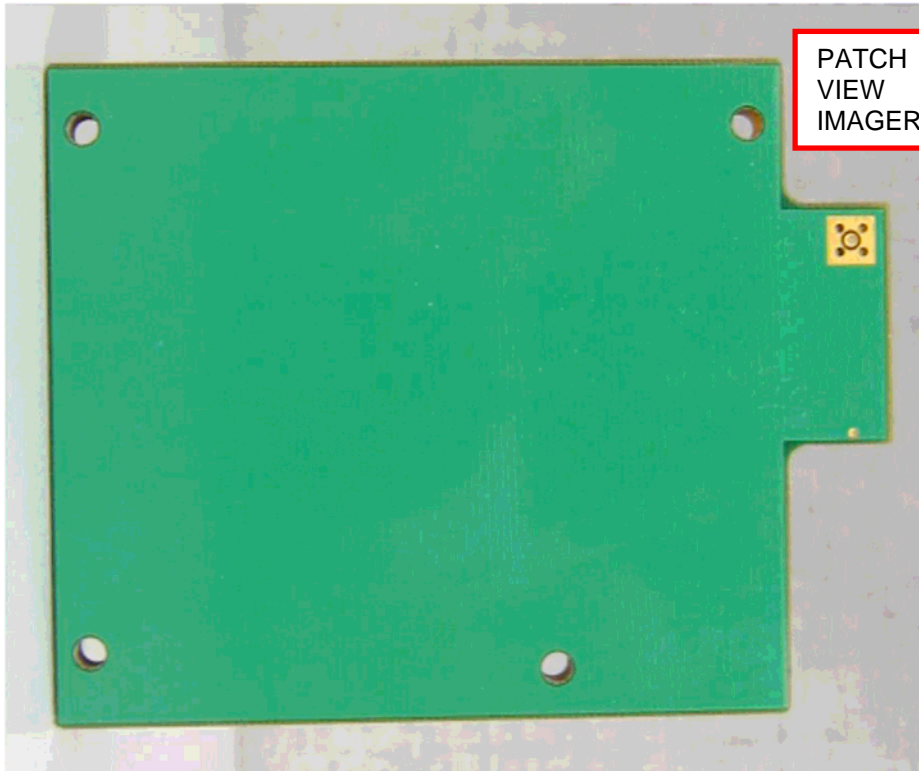


Authorized Patch Antenna (PN 07553-01) front



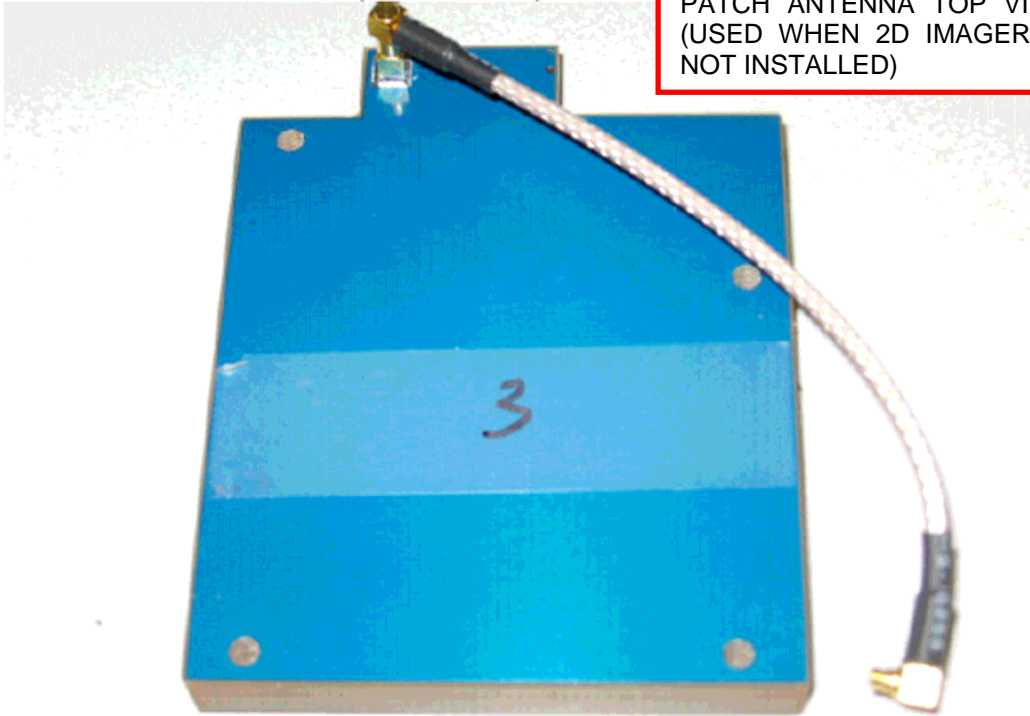
PATCH ANTENNA TOP VIEW  
(USED WHEN 2D IMAGER IS  
INSTALLED)

Back



PATCH ANTENNA BOTTOM  
VIEW (USED WHEN 2D  
IMAGER IS INSTALLED)

Authorized Patch Antenna (PN 07558-01) front

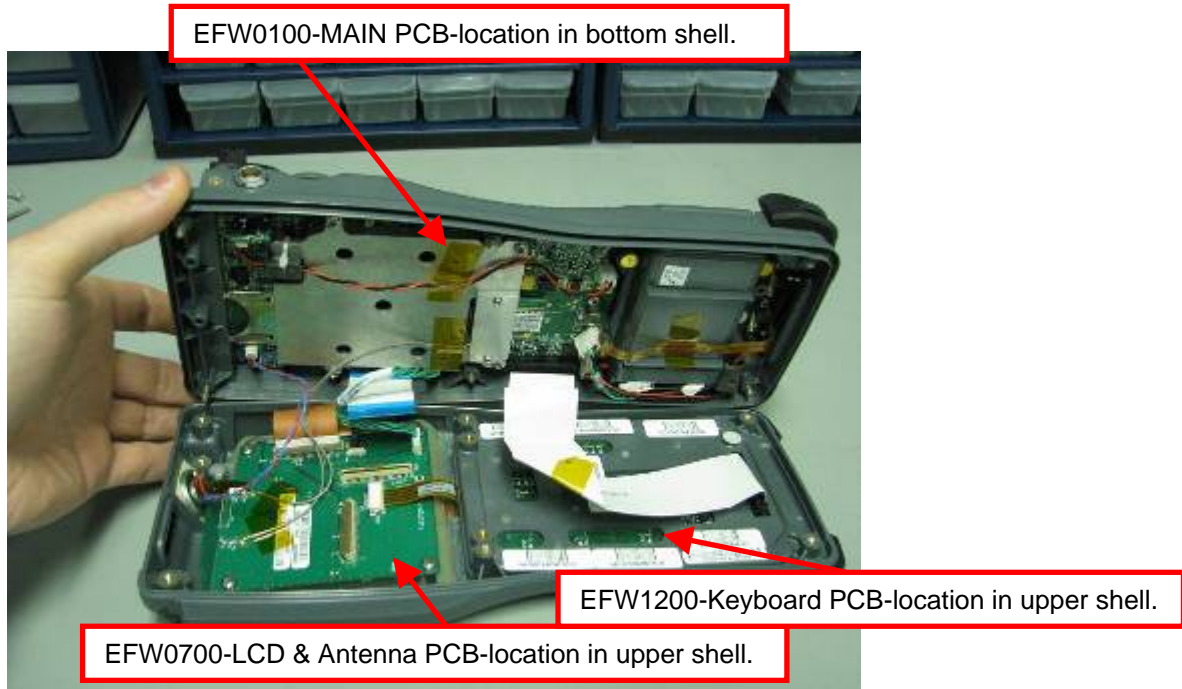


PATCH ANTENNA TOP VIEW  
(USED WHEN 2D IMAGER IS  
NOT INSTALLED)

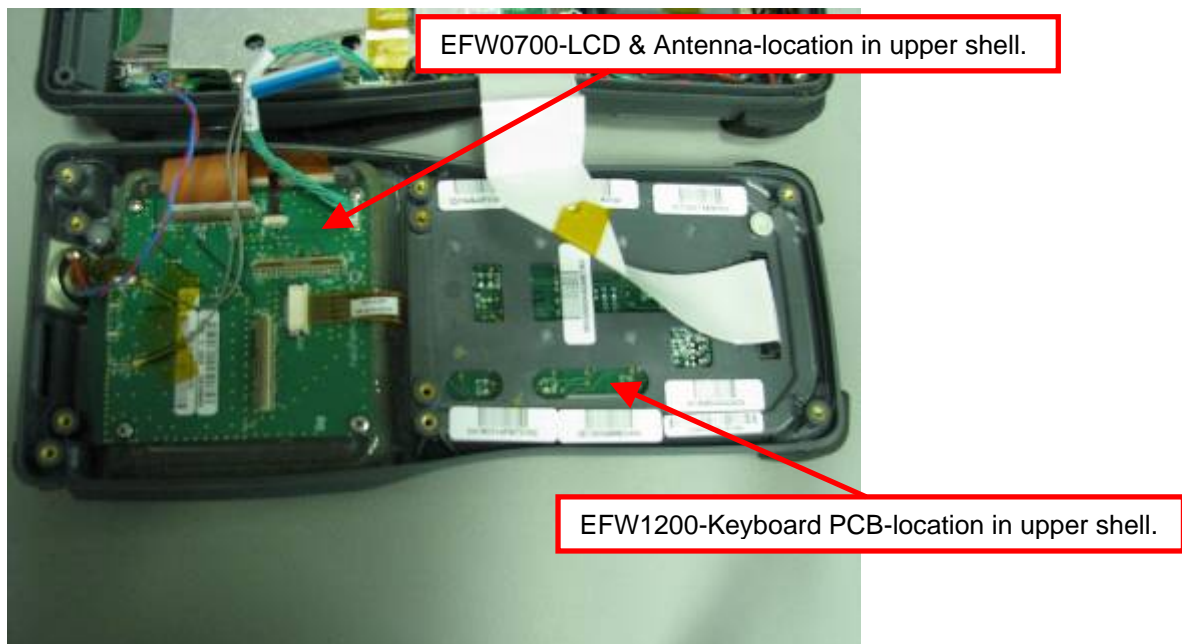
Back



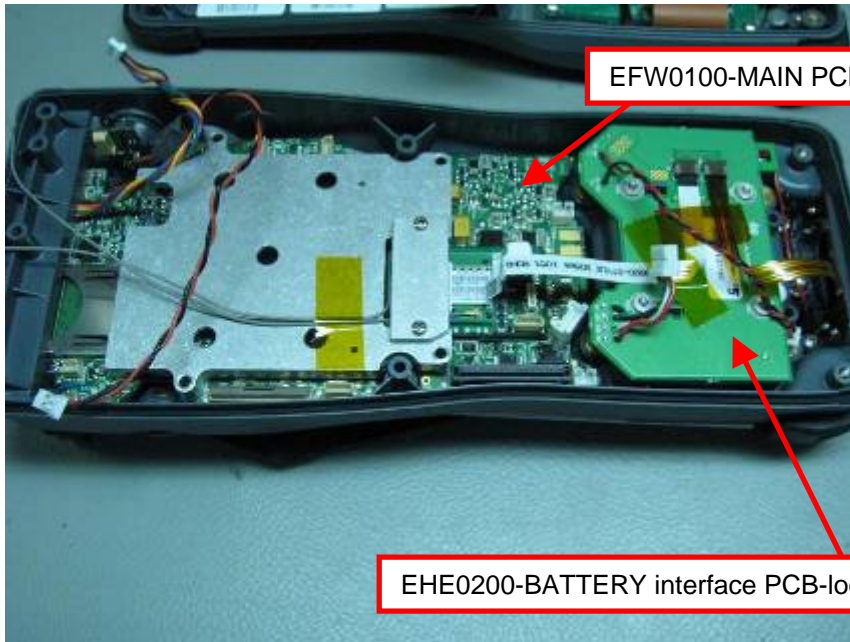
PATCH ANTENNA BOTTOM  
VIEW (USED WHEN 2D  
IMAGER IS NOT INSTALLED)



Opening view#1



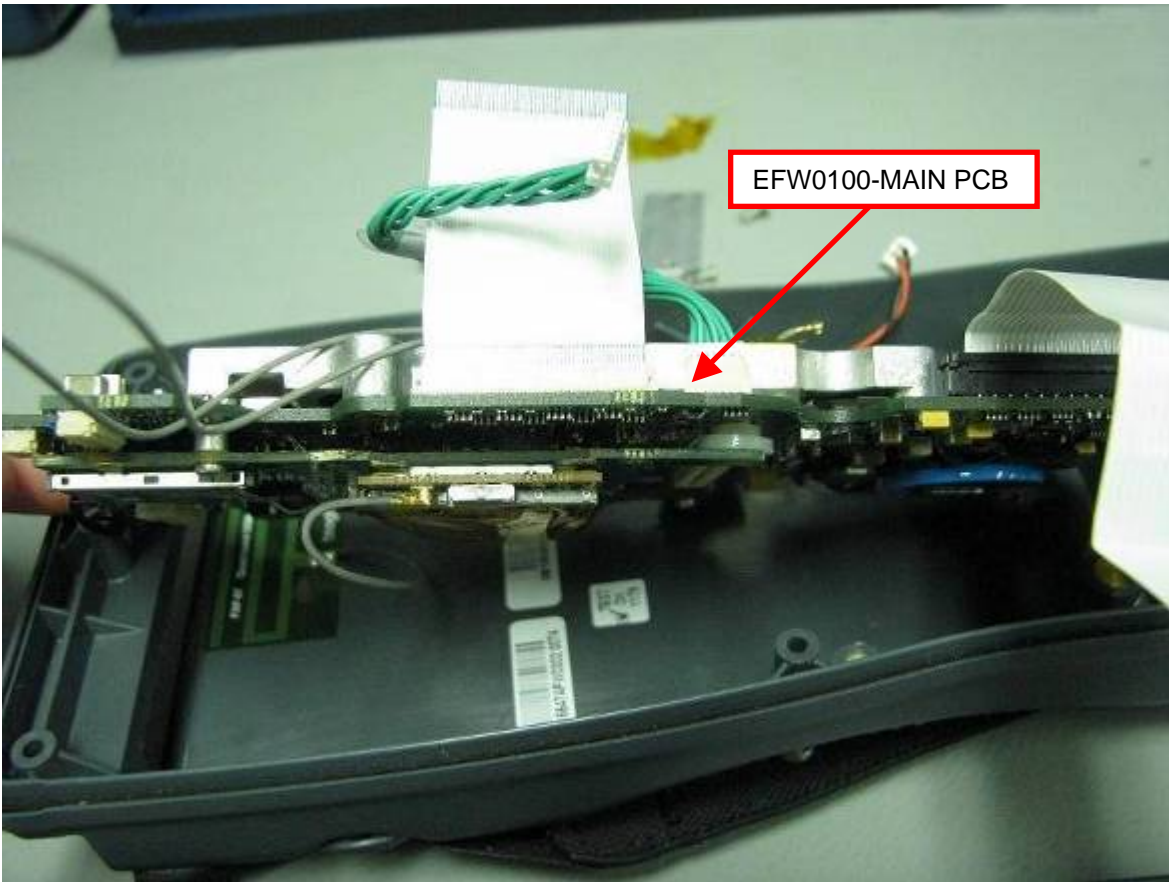
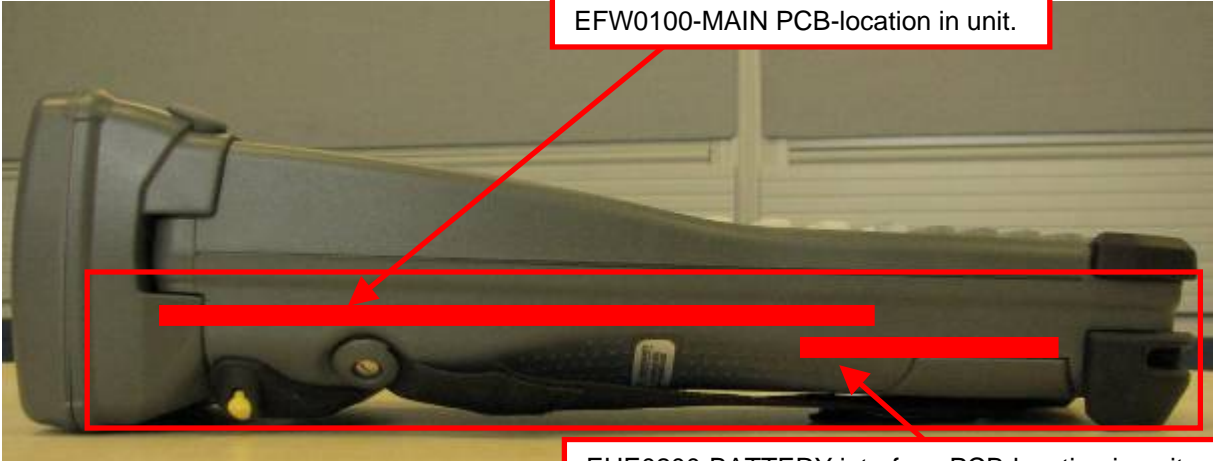
Upper shell inside view



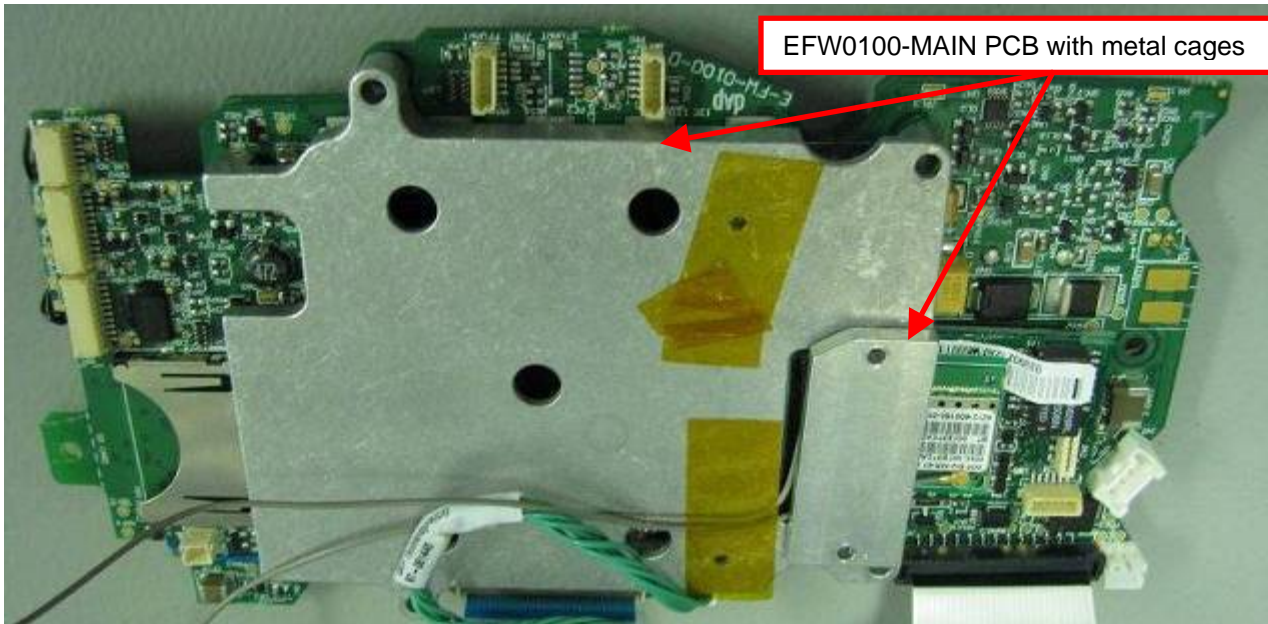
Bottom shell for second battery configuration inside view



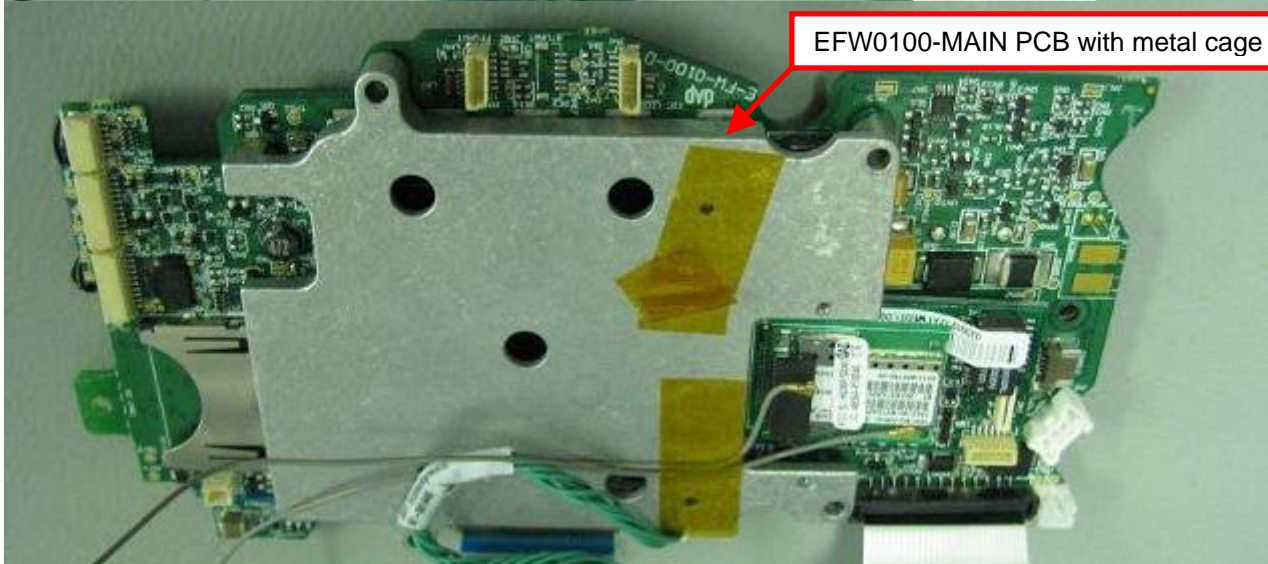
Bottom shell for standard battery configuration inside view



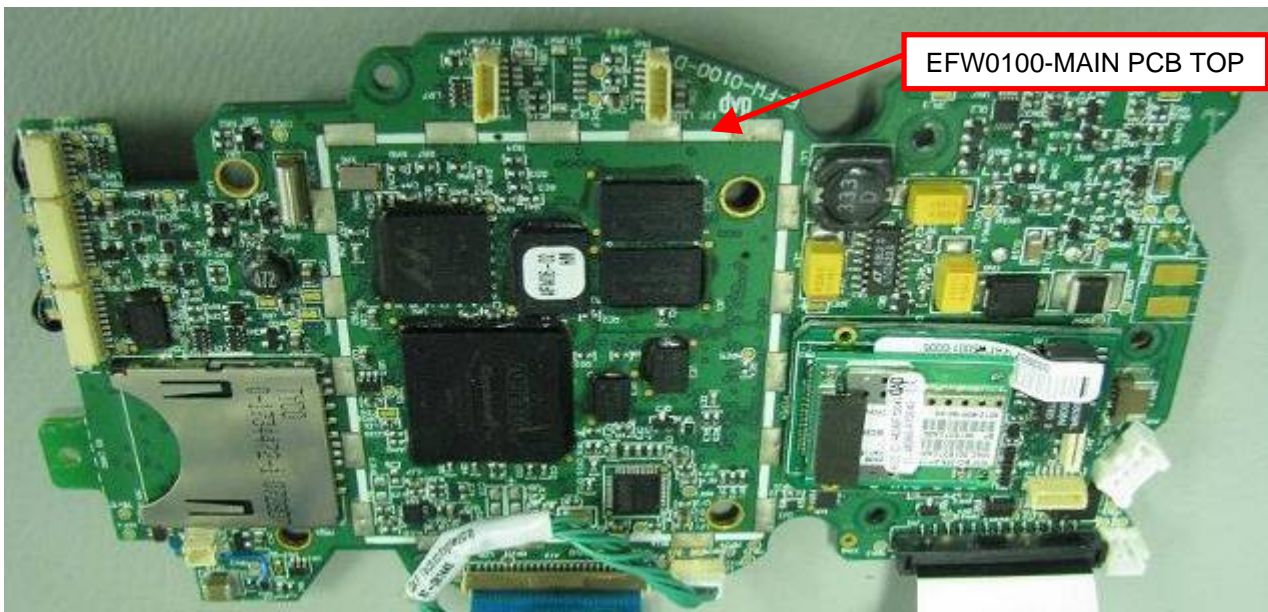




EFW0100-MAIN PCB with metal cages



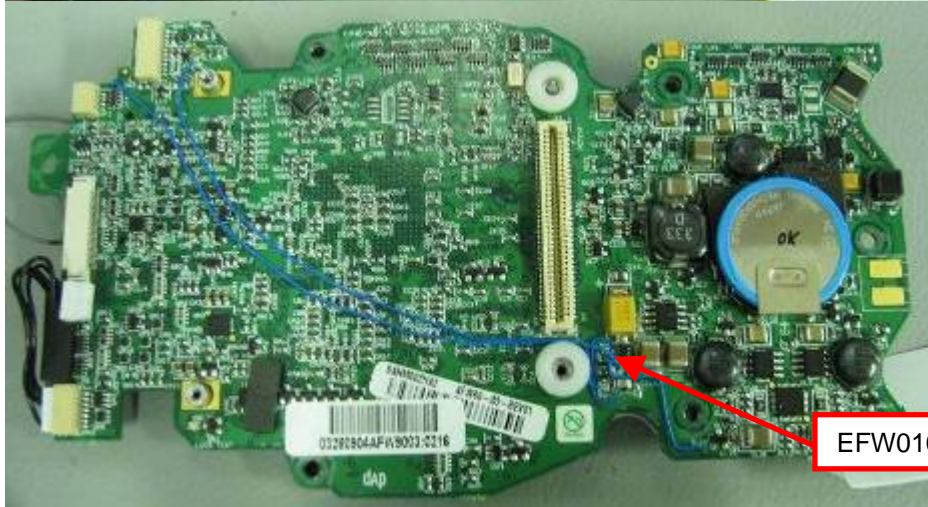
EFW0100-MAIN PCB with metal cage



EFW0100-MAIN PCB TOP



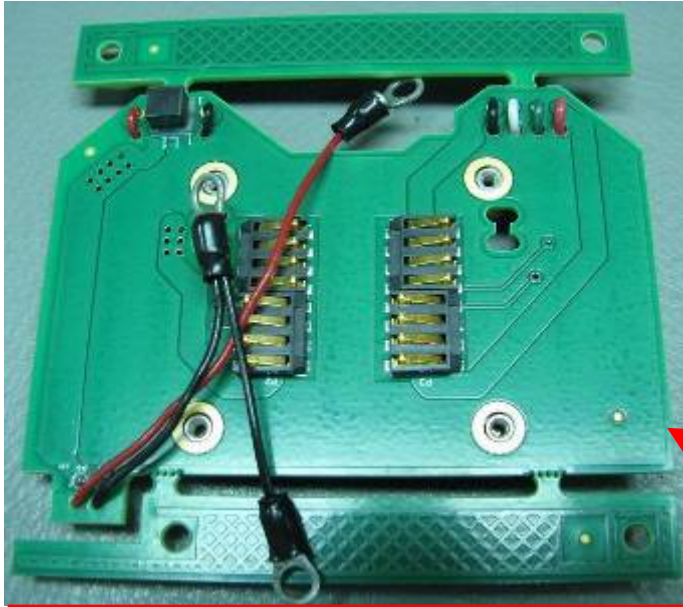
EFW0100-MAIN PCB BOTTOM



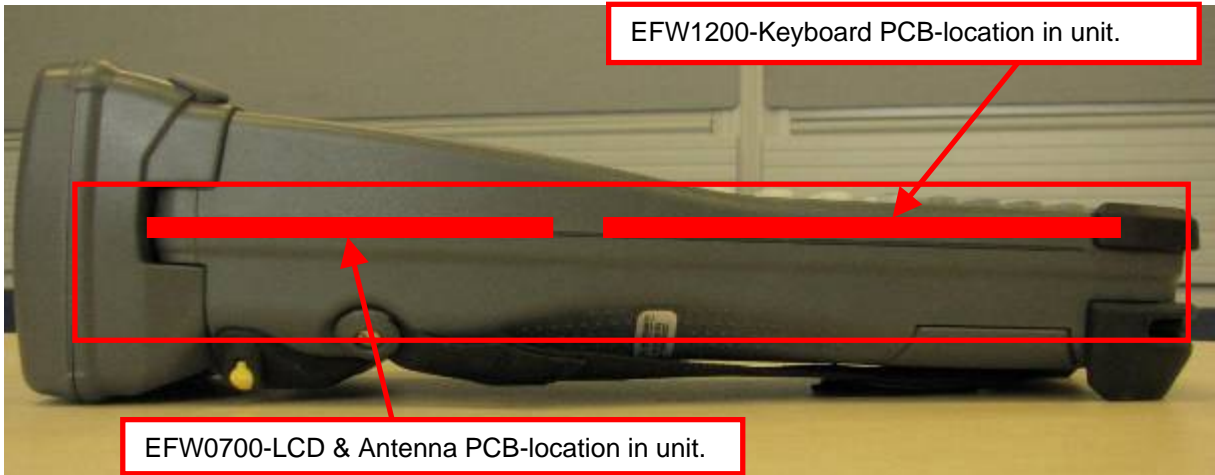
EFW0100-MAIN PCB BOTTOM



EHE0200-BATTERY interface PCB-Top side with crackers to be removed before installation in unit.

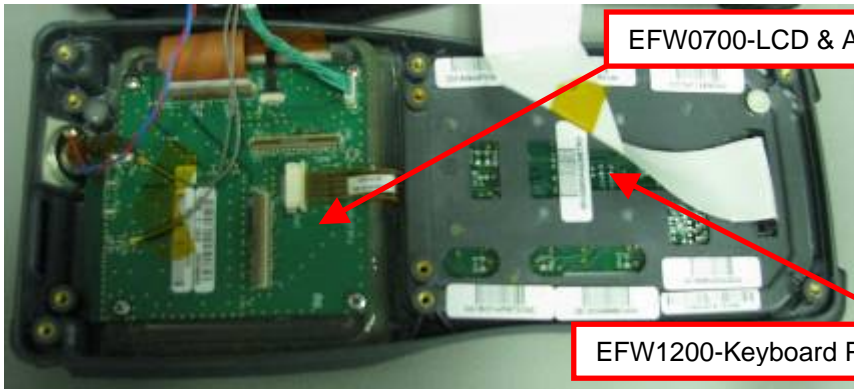


EHE0200-BATTERY interface PCB-Bottom side with crackers to be removed before installation in unit.



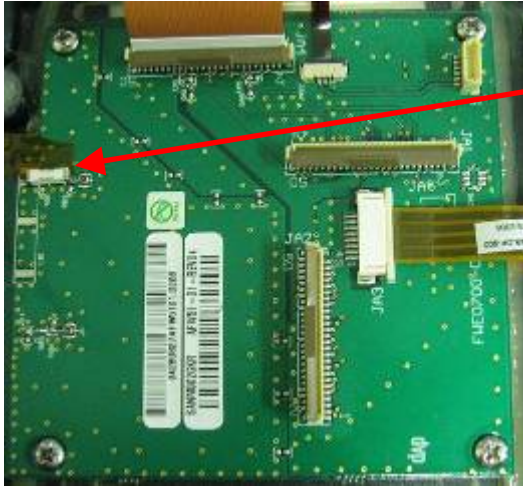
EFW1200-Keyboard PCB-location in unit.

EFW0700-LCD & Antenna PCB-location in unit.



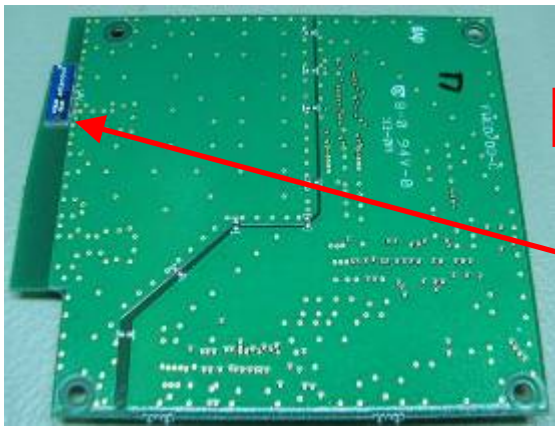
EFW0700-LCD & Antenna PCB-location in upper shell.

EFW1200-Keyboard PCB-location in upper shell.



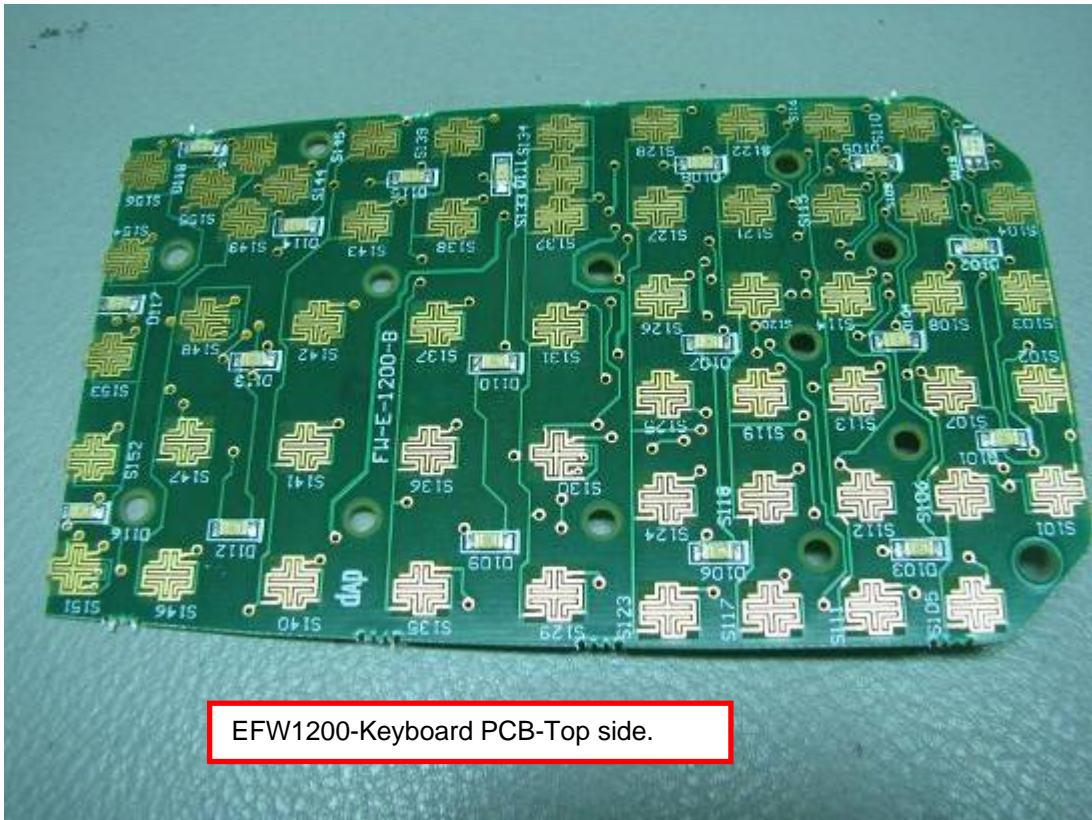
Bluetooth Antenna.

EFW0700-LCD & Antenna PCB-Top side.



EFW0700-LCD & Antenna PCB-Bottom side.

WiFi Antenna.



EFW1200-Keyboard PCB-Top side.



EFW1200-Keyboard PCB-Bottom side.