



Top side view #1



Bottom view



Right side view #2



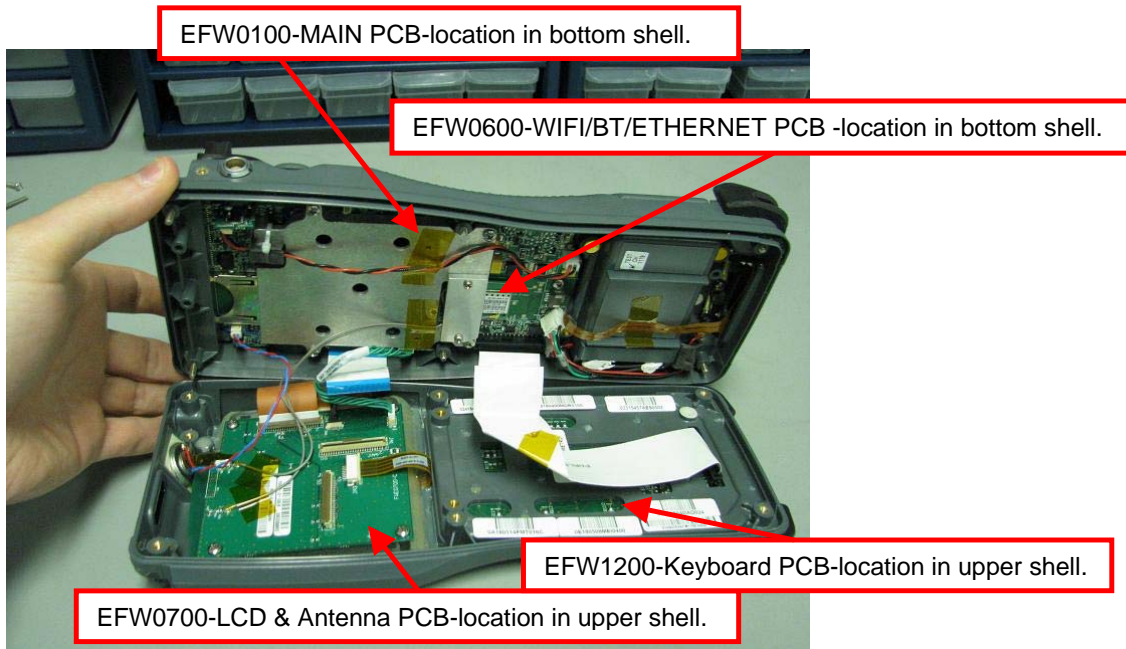
Left side view



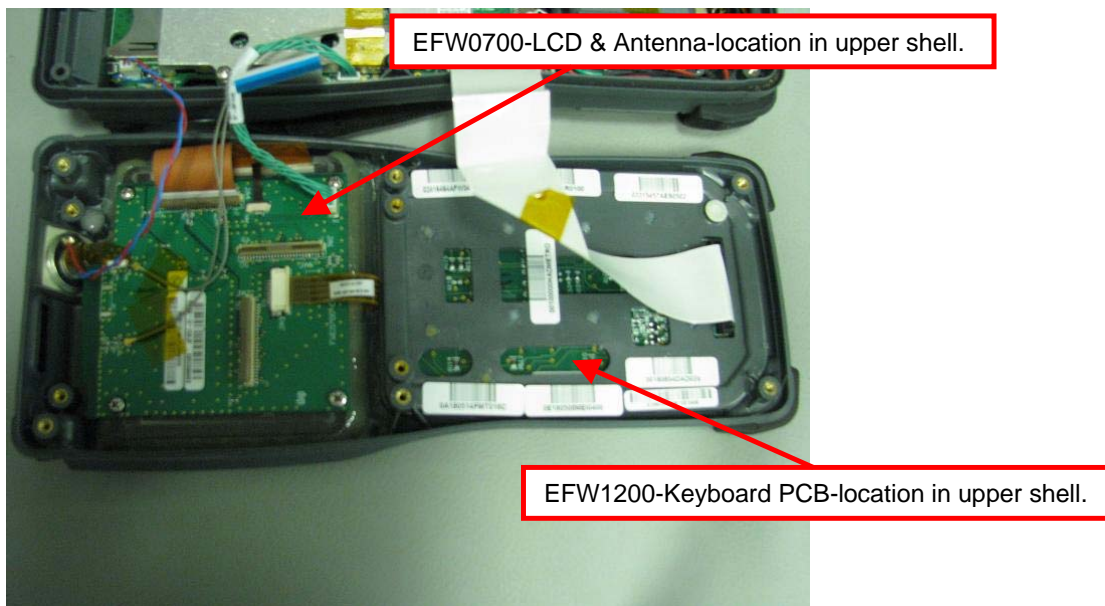
Back view



Front view #1



Opening view#1



Upper shell inside view

EFW0600-WIFI/BT/ETHERNET PCB -location in bottom shell.

EFW0100-MAIN PCB-location in bottom shell.

EFW2000-LEMO PCB-location in bottom shell.

EHE0200-BATTERY interface PCB-location in bottom shell.

Bottom shell for second battery configuration inside view

EFW2000-LEMO PCB-location in bottom shell.

EFW0100-MAIN PCB-location in bottom shell.

EFW0600-WIFI/BT/ETHERNET PCB -location in bottom shell.

Bottom shell for standard battery configuration inside view

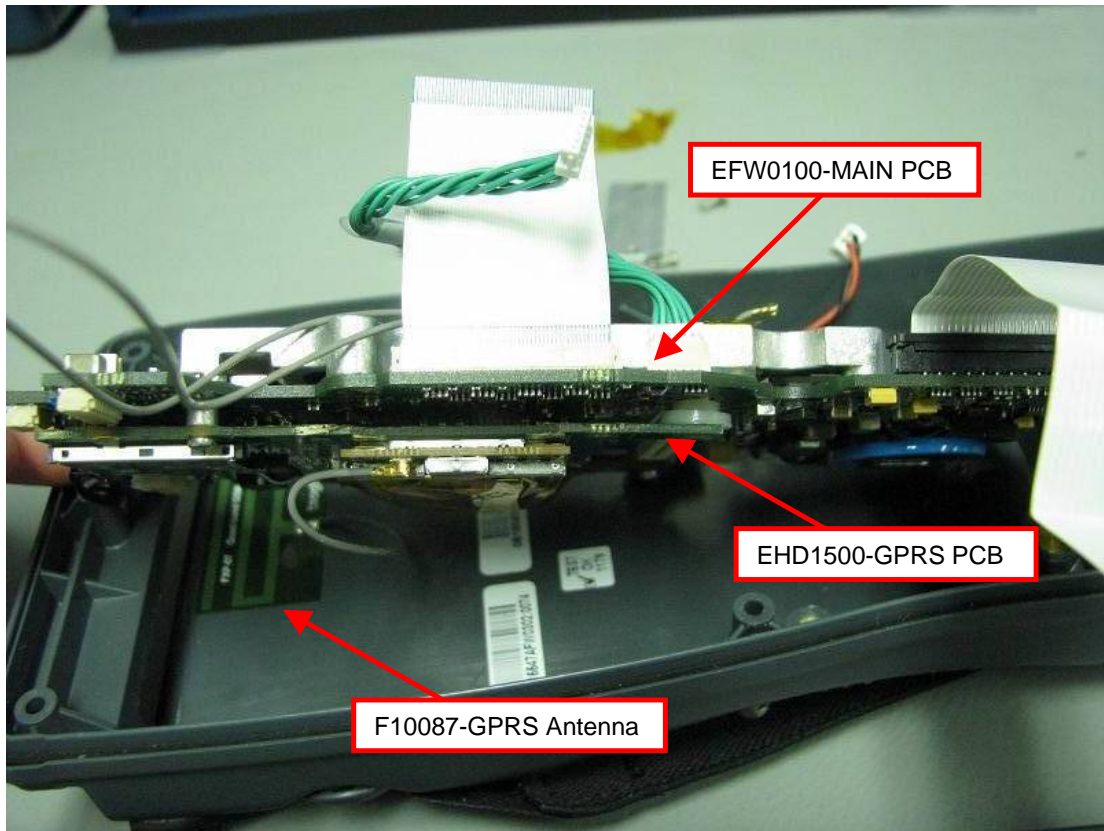


EFW0100-MAIN PCB-location in unit.

EFW0600-WIFI/BT/ETHERNET PCB

EHD1500-GPRS PCB-location in unit.

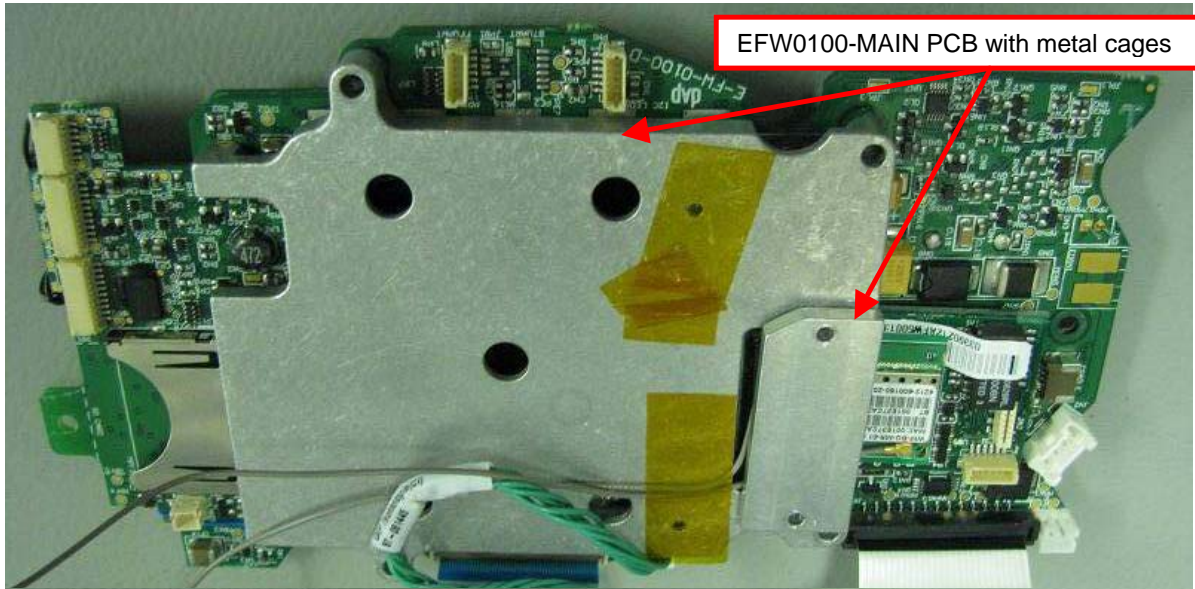
EHE0200-BATTERY interface PCB-location in unit.



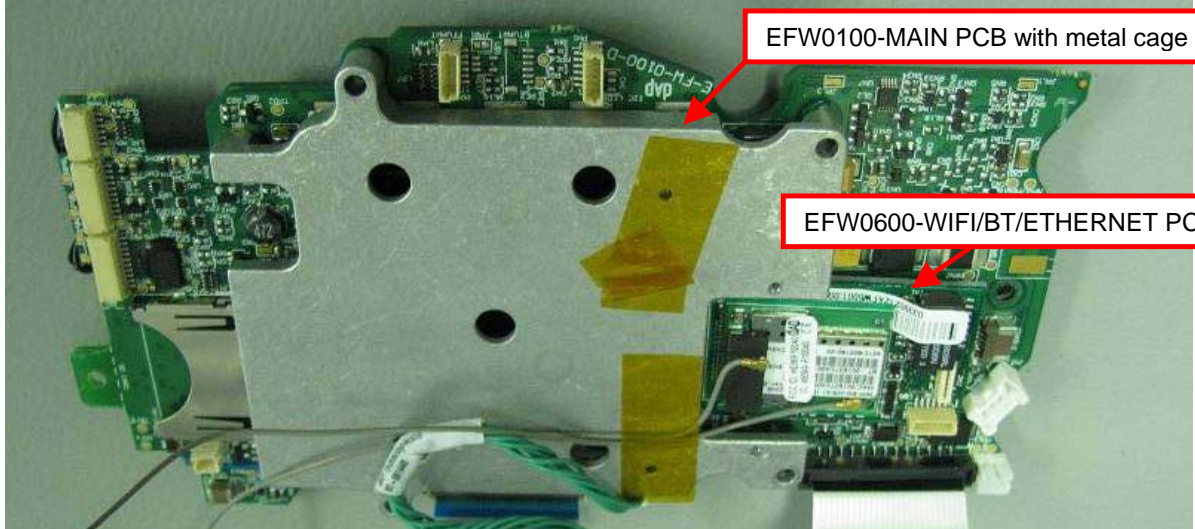
EFW0100-MAIN PCB

EHD1500-GPRS PCB

F10087-GPRS Antenna

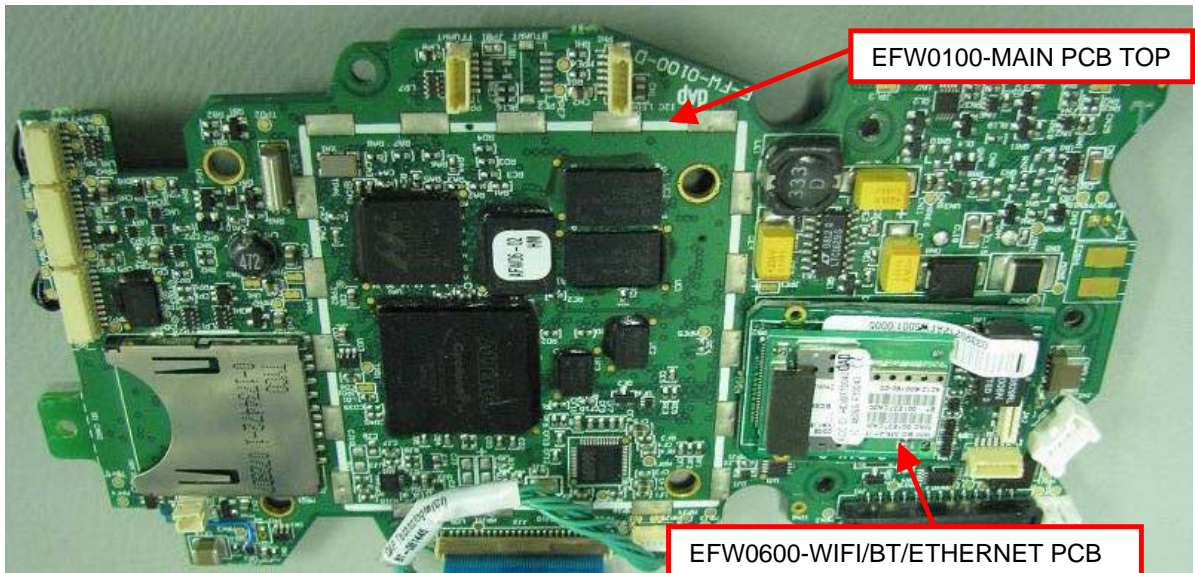


EFW0100-MAIN PCB with metal cages



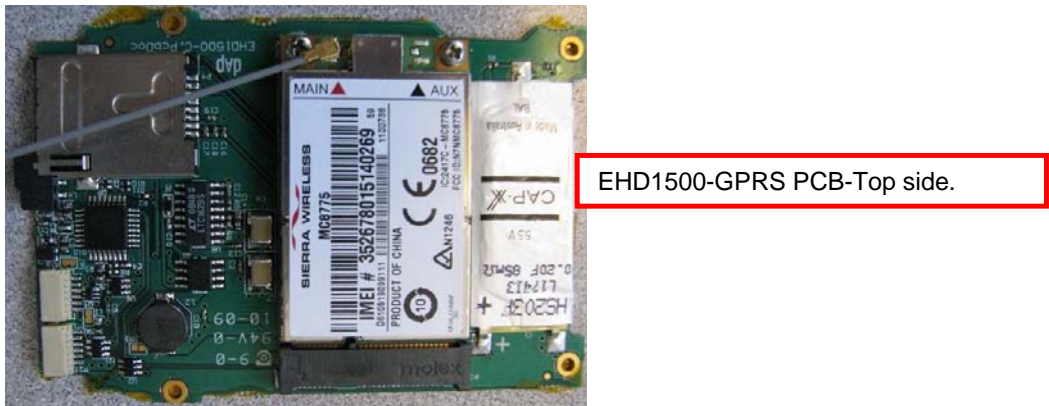
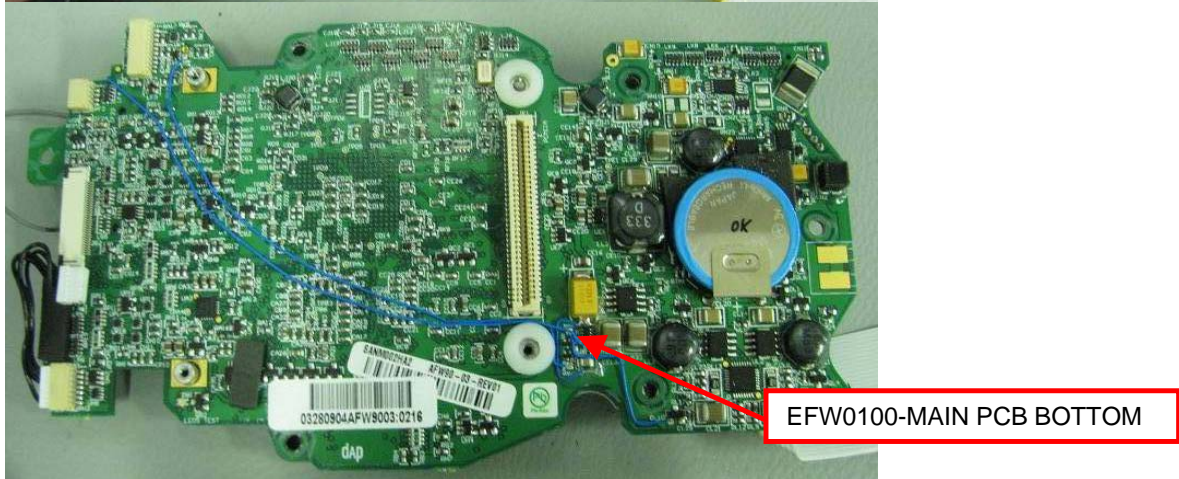
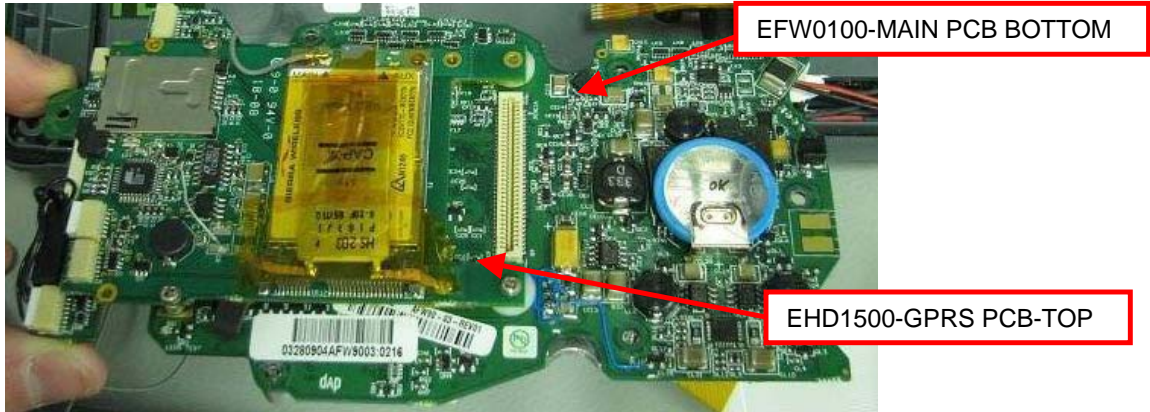
EFW0100-MAIN PCB with metal cage

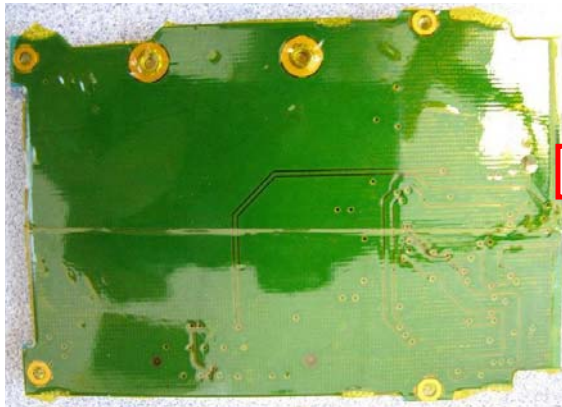
EFW0600-WIFI/BT/ETHERNET PCB



EFW0100-MAIN PCB TOP

EFW0600-WIFI/BT/ETHERNET PCB



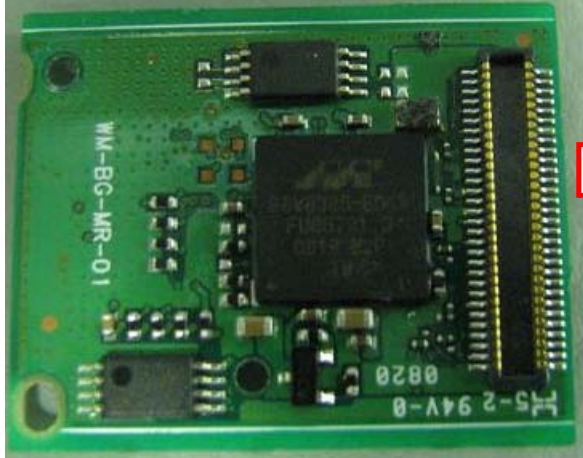


EHD1500-GPRS PCB-Bottom side.



F10040-WIFI/BT COMBO PCB TOP

EFW0600-WIFI/BT/ETHERNET PCB TOP



F10040-WIFI/BT COMBO PCB BOTTOM



EFW0600-WIFI/BT/ETHERNET PCB TOP

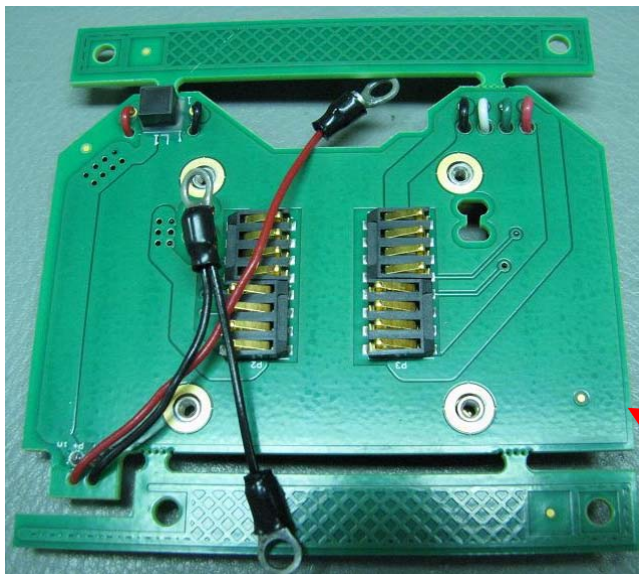




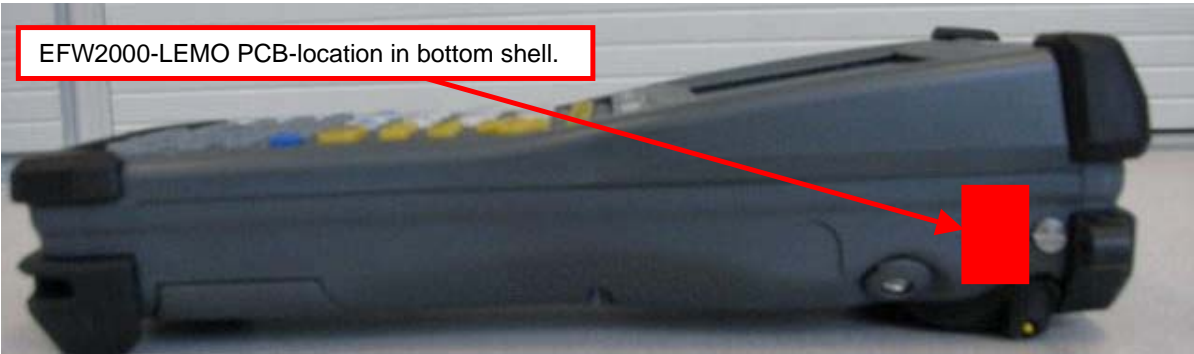
EFW0600-WIFI/BT/ETHERNET PCB BOTTOM

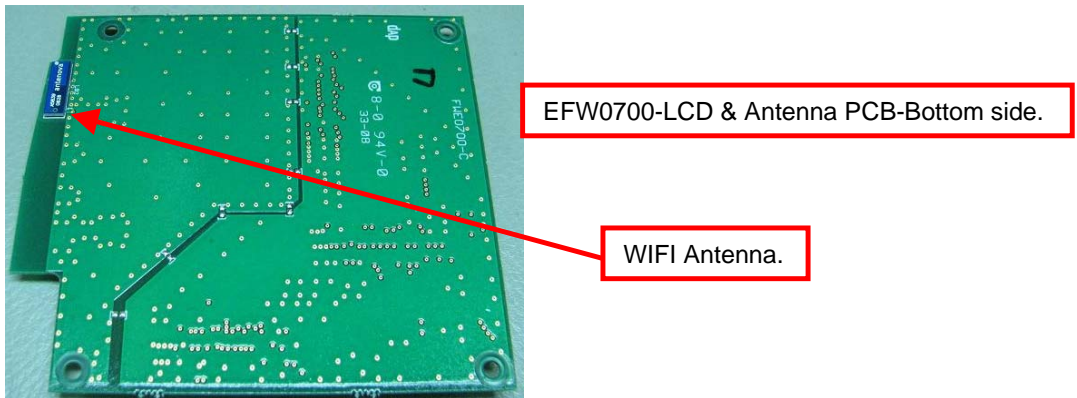
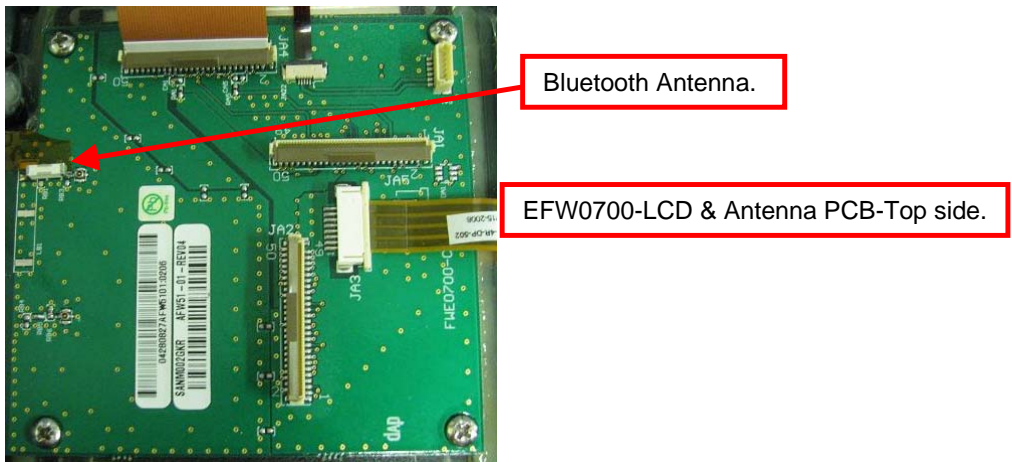
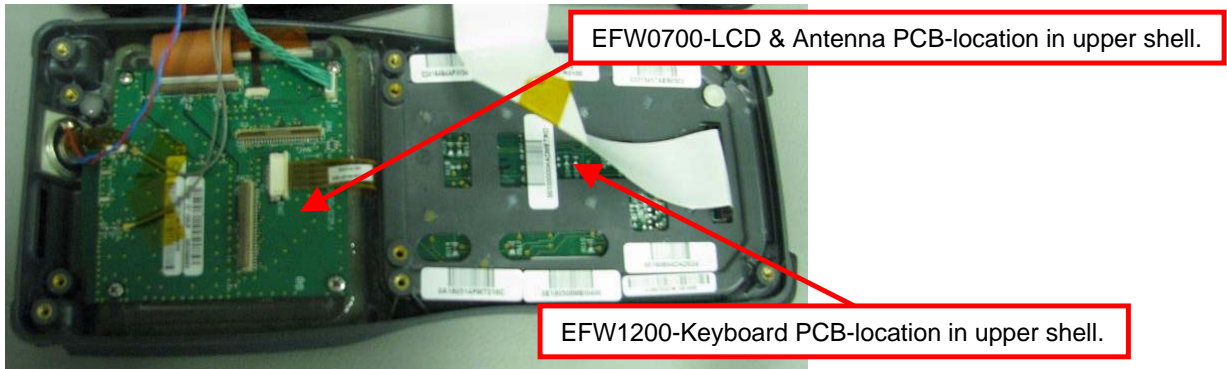
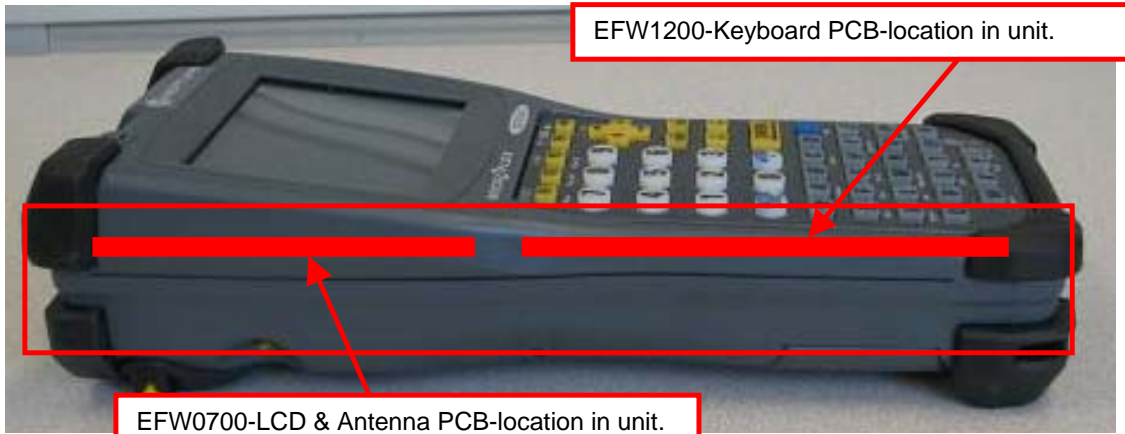


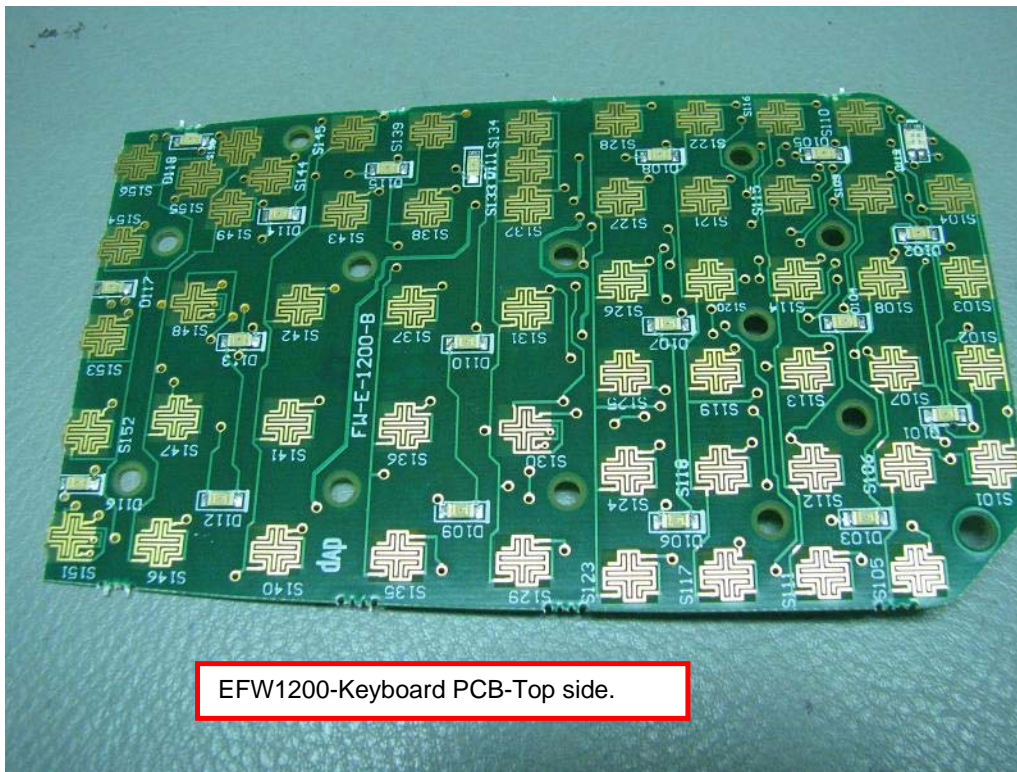
EHE0200-BATTERY interface PCB-Top side with crackers to be removed before installation in unit.



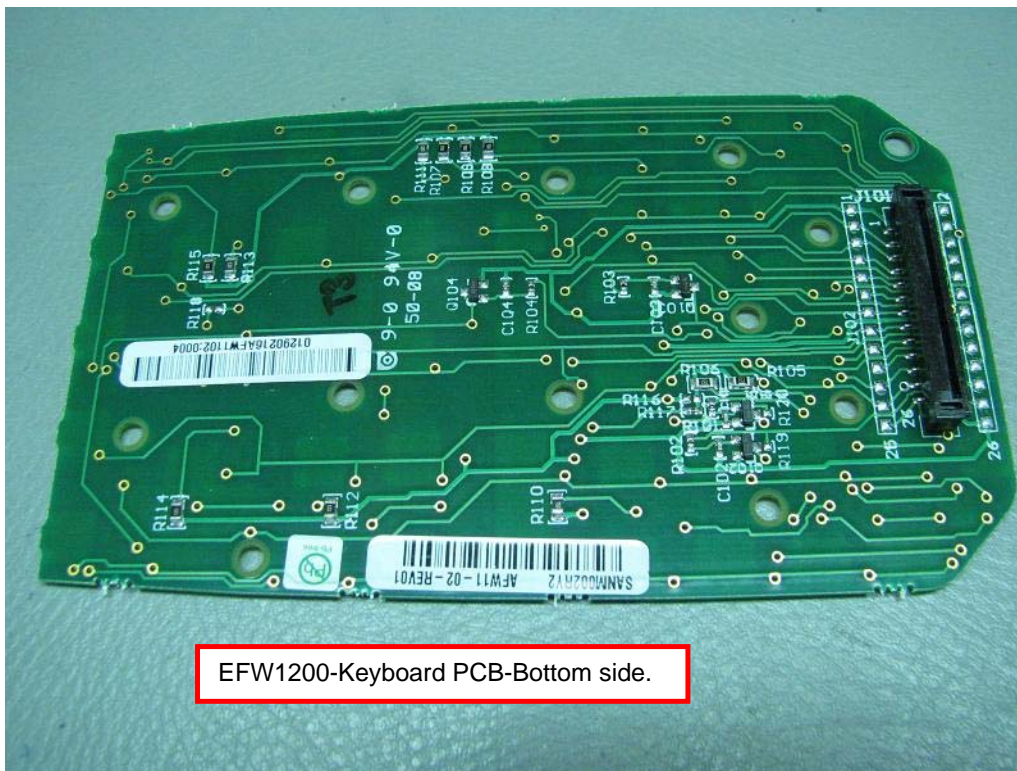
EHE0200-BATTERY interface PCB-Bottom side with crackers to be removed before installation in unit.







EFW1200-Keyboard PCB-Top side.



EFW1200-Keyboard PCB-Bottom side.