



WF2419

300Mbps Wireless-N AP/Repeater/Router client Quick Installation Guide

1. Check Your Package Contents

The following items should be found in your package:

- > 300Mbps Wireless-N AP/Repeater/Router client
- > Power adapter
- > Quick Installation Guide
- > CD-Rom
- > Ethernet cable

Make sure that the package contains above items . If any of the above items is missing or damaged , please contact the store you bought this product from.

2. Before You Begin

Minimum Requirements:

- > Broadband (DSL/Cable) modem and service with Ethernet port
- > 802.11n b/g/n wireless adapter or Ethernet adapter and cable for each computer
- > Internet Explorer ~ 5.0, Firefox ~ 2.0 or Safari ~ 1.4 or higher

3. Hardware Installation

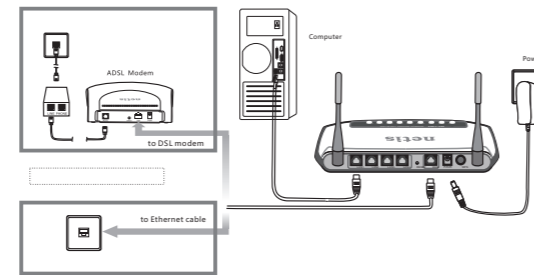


Figure 3-1

- > Attach one end of an Ethernet cable to your computer's Ethernet port , and the other end to one of the LAN ports of your router.
- > Connect another Ethernet cable from your Cable/DSL modem to the WAN port of your router.
- > Connect the single DC output connector of the power adapter to the power jack on the back of the router and plug the Power Adapter into an AC outlet.

4. LED Indicators

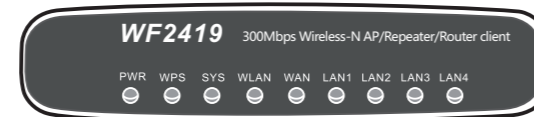


Figure 4-1

5. Configure Your Computer

LED	Function	
PWR	ON	Power on
WPS	Flashing slowly	WPS is running
SYS	Flashing	Normal
WLAN	Flashing	Wireless data transmitting
WAN	On	WAN Connection normal
	Flashing	Data transmitting
LAN	On	Corresponding LAN port connection normal
	Flashing	Corresponding LAN port data transmitting

You can manage the 300Mbps Wireless-N AP/Repeater/Router client through the Web browser- based configuration utility. To configure the device via Web browser , at least one properly configured computer must be connected to the device via Ethernet or wireless network . The Router is configured with the default Ip address of 192.168.1.1 and subnet mask of 255.255.255.0 and its DHCP server is enabled by default.

Here we use Windows XP for example . If your network settings are not already set and you need to complete this step , the configurations are similar for the other operating systems.

>Go to the start menu and click on control panel . In the control panel double click on Network Connections. Under LAN or High-Speed Internet right click on the local

area connection and select properties. In the screen in the box under "This connection uses the following items:" select Internet Protocol (TCP/IP) and click Properties.

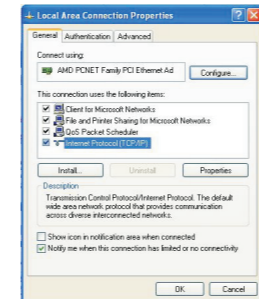


Figure 5-1

> Select obtain an IP address automatically and obtain DNS server address automatically, click OK

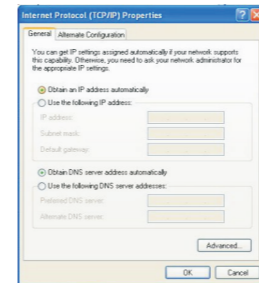


Figure 5-2

> Back Tn the previous window, click OK

6. Log In to Router Interface

> Open a web browser (Safari, Internet ExploreE, etc.) on the computer you have just connected to the router, type http://192.168.1.1 in the address bar , and press enter

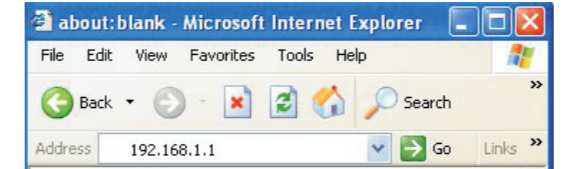


Figure 6-1

> In the pop - up window, enter the user name guest and password guest and then click OK



> After you have logged in , the router's user interface will be displayed . The left menu shows the main options to configure the system , and the right screen is the summary information for viewing and adjusting the configurations.

7. Router Setup

7.1. Internet Connection Settings

> Most connections utilize a dynamic IP (DHCP) and the default is already set to this. If you have another connection type (like static User), you will need to click on 'Quick Setup' in the menu and input information given you by your service provider and then click save.

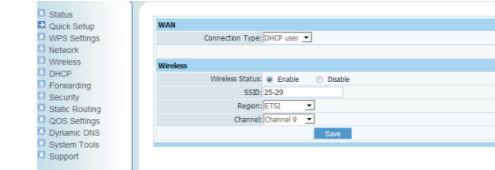


Figure 7-1

> You may already be connected to the Internet. Click on 'Status' to see if you have an IP, Gateway, etc (refer to the following picture). If not, your service provider probably requires you clone the MAC address of your computer to the router. To do so, return to the Quick Setup menu and click on the 'Clone MAC address' button , and then click the 'Save' button below."

FCC Statement

This equipment has been tested and found to comply with the limits for a Class B digital device, pursuant to part 15 of the FCC rules. These limits are designed to provide reasonable protection against harmful interference in a residential installation. This equipment generates, uses and can radiate radio frequency energy and, if not installed and used in accordance with the instructions, may cause harmful interference to radio communications. However, there is no guarantee that interference will not occur in a particular installation. If this equipment does cause harmful interference

to radio or television reception, which can be determined by turning the equipment off and on, the user is encouraged to try to correct the interference by one or more of the following measures:

- Reorient or relocate the receiving antenna.
- Increase the separation between the equipment and receiver
- Connect the equipment into an outlet on a circuit different from that to which the receiver is connected.
- Consult the dealer or an experienced radio/TV technician for help.

To assure continued compliance, any changes or modifications not expressly approved by the party responsible for compliance could void the user's authority to operate this equipment (Example- use only shielded interface cables when connecting to computer or peripheral devices.)

This equipment complies with Part 15 of FCC RF Rules. Operation is subject to the following two conditions:

- 1) This device may not cause interference and
- 2) This device must accept any interference, including interference that may cause undesired operation of the device.

USA/Canada Technical Support:
Phone { toll free in USA & Canada }:
1-866-71-network or 1-866-716-3896
Email: usa_support@netis-systems.com
For North America only

NETIS SYSTEMS CO.,LTD.
Http ://www.netis-systems.com
MADE IN CHINA