



FCC SAR Test Report

FCC ID: T58WF2151RT

Project No. : 1211C045A
Equipment : Wireless Dual Band USB Adapter
Model Name : WF2151
Applicant : NETIS SYSTEMS CO., LTD
Address : 4F&5F R&D Building, Oriental Cyberport,
High-Tech Industrial Park, Nanshan,
Shenzhen, China.

Tested by: Neutron Engineering Inc. EMC Laboratory

Date of Receipt: Sep. 26, 2013

Date of Test: Sep. 26, 2013 ~ Nov. 29, 2013

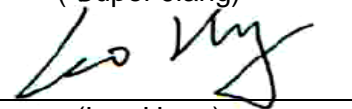
Date of Issue: Dec. 02, 2013

Testing Engineer :



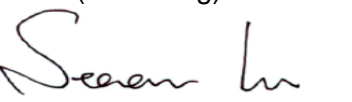
(Super Jiang)

Technical Manager :



(Leo Hung)

Authorized Signatory :



(Steven Lu)

Neutron Engineering Inc.

No.3,Jinshagang 1st Road, ShiXia,

Dalang Town, Dong Guan, China.

TEL: 0769-8318-3000

FAX: 0769-8319-6000



Declaration

Neutron represents to the client that testing is done in accordance with standard procedures as applicable and that test instruments used has been calibrated with the standards traceable to National Measurement Laboratory (**NML**), or National Institute of Standards and Technology (**NIST**) .

Neutron's reports apply only to the specific samples tested under conditions. It is manufacture's responsibility to ensure that additional production units of this model are manufactured with the identical electrical and mechanical components. **Neutron** shall have no liability for any declarations, inferences or generalizations drawn by the client or others from **Neutron** issued reports.

Neutron's reports must not be used by the client to claim product endorsement by the authorities or any agency of the Government.

This report is the confidential property of the client. As a mutual protection to the clients, the public and **Neutron-self**, extracts from the test report shall not be reproduced except in full with **Neutron's** authorized written approval.

Neutron's laboratory quality assurance procedures are in compliance with the **ISO Guide 17025** requirements, and accredited by the conformity assessment authorities listed in this test report.

Limitation

For the use of the authority's logo is limited unless the Test Standard(s)/Scope(s)/Item(s) mentioned in this test report is (are) included in the conformity assessment authorities acceptance respective.



Table of Contents	Page
1 . GENERAL SUMMARY	6
2 . RF EMISSIONS MEASUREMENT	7
2.1 TEST FACILITY	7
2.2 MEASUREMENT UNCERTAINTY	7
3 . GENERAL INFORMATION	8
3.1 GENERAL DESCRIPTION OF EUT	8
3.2 THE MAXIMUM SAR _{1G} VALUES	10
3.3 LABORATORY ENVIRONMENT	10
3.4 MAIN TEST INSTRUMENTS	11
4 . SAR MEASUREMENTS SYSTEM CONFIGURATION	12
4.1 SAR MEASUREMENT SET-UP	12
4.2 DASY5 E-FIELD PROBE SYSTEM	13
5 . TISSUE-EQUIVALENT LIQUID	20
5.1 TISSUE-EQUIVALENT LIQUID INGREDIENTS	20
5.2 TISSUE-EQUIVALENT LIQUID PROPERTIES	20
6 . SYSTEM CHECK	21
6.1 DESCRIPTION OF SYSTEM CHECK	21
6.2 DESCRIPTION OF SYSTEM CHECK	22
7 . OPERATIONAL CONDITIONS DURING TEST	23
7.1 GENERAL DESCRIPTION OF TEST PROCEDURES	23
7.2 TEST POSITION	23
8 . TEST RESULT	24
8.1 CONDUCTED POWER RESULTS	24
8.2 SAR TEST RESULTS	38
APPENDIX	39
1. TEST LAYOUT	39
2. SYSTEM CHECK RESULTS	40
3. GRAPH RESULTS	43
4. PROBE CALIBRATION CERTIFICATE	49
5. (1) D2450V2 DIPOLE CALIBRATION CERTIFICATE	60



Table of Contents	Page
5. (2) D5GHZV2 DIPOLE CALIBRATION CERTIFICATE	68
6. DAE4 CALIBRATION CERTIFICATE	77
7. EUT TESTING POSITION	82
8. TEST CONFIGURATION	83



REPORT ISSUED HISTORY

Issued No.	Description	Issued Date
NEI-FCC-SAR-1211C045A	Original Issue.	Dec. 02, 2013



1. GENERAL SUMMARY

Equipment	Wireless Dual Band USB Adapter
Model Name	netis
Brand Name	WF2151
Model Difference	N/A
Manufacturer	Shenzhen Netcore Industrial Ltd.
Address	4F&5F R&D Building, Oriental Cyberport, High-Tech Industrial Park, Nanshan, Shenzhen, China.
Factory	Dongguan City Netcore Network Technology Co., Ltd.
Address	No.10-1, Sankeng Road, Qinghutou, Tangxia Town, Dongguan City
Standard(s)	<p>FCC 47CFR §2.1093 Radio frequency Radiation Exposure Evaluation: Portable Devices</p> <p>ANSI C95.1, 1999 Safety Levels with Respect to Human Exposure to Radio Frequency Electromagnetic Fields, 3 kHz to 300 GHz.(IEEE Std C95.1-1999)</p> <p>IEEE 1528 2013: IEEE Recommended Practice for Determining the Peak Spatial-Average Specific Absorption Rate (SAR) in the Human Head from Wireless Communications Devices: Measurement Techniques</p> <p>KDB248227 D01 v01r02 SAR meas for 802 11 a b g v01r02: SAR Measurement Procedures for 802.11a/b/g Transmitters</p> <p>KDB 447498 D02 General RF Exposure Guidance v05r01: Mobile and Portable Device RF Exposure Procedures and Equipment Authorization Policies.</p> <p>Tracking number 400012</p>

The above equipment has been tested and found compliance with the requirement of the relative standards by Neutron Engineering Inc. EMC Laboratory.

The test data, data evaluation, and equipment configuration contained in our test report (Ref No. NEI-FCC-SAR-1211C045A) were obtained utilizing the test procedures, test instruments, test sites that has been accredited by the Authority of TAF according to the ISO-17025 quality assessment standard and technical standard(s).



2. RF EMISSIONS MEASUREMENT

2.1 TEST FACILITY

The test facilities used to collect the test data in this report is **SAR room** at the location of No.3, Jinshagang 1st Road, ShiXia, Dalang Town, Dong Guan, China.523792

2.2 MEASUREMENT UNCERTAINTY

Uncertainty Component	Uncertainty Value	Probability Distribution	Divisor	C _i (1g)	Standard Uncertainty ±1%	V _i or V _{eff}
Measurement System						
Probe Calibration (k=1)	5.9	Normal	1	1	5.9	∞
Axial Isotropy	4.7	Rectangular	√3	√0.5	1.9	∞
Hemispherical Isotropy	9.6	Rectangular	√3	√0.5	3.9	∞
Boundary Effect	1.0	Rectangular	√3	1	0.6	∞
Linearity	4.7	Rectangular	√3	1	2.7	∞
System Detection Limit	1.0	Rectangular	√3	1	0.6	∞
Readout Electronics	0.3	Normal	1	1	0.3	∞
Response Time	0.8	Rectangular	√3	1	0.5	∞
Integration Time	2.6	Rectangular	√3	1	1.5	∞
RF Ambient Conditions-Noise	3.0	Rectangular	√3	1	1.7	∞
RF Ambient Reflections	3.0	Rectangular	√3	1	1.7	∞
Probe Positioner Mechanical Tolerance	0.4	Rectangular	√3	1	0.2	∞
Probe Positioning with respect to Phantom Shell	2.9	Rectangular	√3	1	1.7	∞
Extrapolation, interpolation and integration Algorithms for Max. SAR Evaluation	1.0	Rectangular	√3	1	0.6	∞
Test Sample Related						
Test sample Positioning	2.9	Normal	1	1	2.9	145
Device Holder Uncertainty	3.6	Normal	1	1	3.6	5
Output Power Variation - SAR drift measurement	5.0	Rectangular	√3	1	2.9	∞
Phantom and Setup						
Phantom Uncertainty (shape and thickness tolerances)	4.0	Rectangular	√3	1	2.3	∞
Liquid Conductivity - deviation from target values	5.0	Rectangular	√3	0.64	1.8	∞
Liquid Conductivity - measurement uncertainty	2.5	Normal	1	0.64	1.6	∞
Liquid Permittivity - deviation from target values	5.0	Rectangular	√3	0.6	1.7	∞
Liquid Permittivity - measurement uncertainty	2.5	Normal	1	0.6	1.5	∞
Combined standard uncertainty		RSS	-	-	10.9	387
Expanded uncertainty		k=2	-	-	21.9	-



3. GENERAL INFORMATION

3.1 GENERAL DESCRIPTION OF EUT

Operation Frequency	2412MHz~2462 MHz 5150MHz~5250 MHz 5745MHz~5825 MHz
Modulation Technology	802.11a:OFDM 802.11b:DSSS 802.11g:OFDM 802.11n:OFDM
Bit Rate of Transmitter	802.11a: 54/48/36/24/18/12/9/6 Mbps 802.11b: 11/5.5/2/1 Mbps 802.11g: 54/48/36/24/18/12/9/6 Mbps 802.11n up to 300 Mbps
Number Of Channel	Please refer to note 1 (Page 9)
Antenna Type	Please refer to note 2 (Page 9)



Note:

1.





802.11b / g / n 20MHz / n 40MHz							
CH 01 – CH 11 for 802.11b, 802.11g, 802.11n 20MHz							
CH 03 – CH 09 for 802.11n 40MHz							
Channel	Frequency (MHz)	Channel	Frequency (MHz)	Channel	Frequency (MHz)	Channel	Frequency (MHz)
01	2412	04	2427	07	2442	10	2457
02	2417	05	2432	08	2447	11	2462
03	2422	06	2437	09	2452		

802.11a / 802.11n 20MHz				802.11n 40M			
Band 1				Band 1			
Channel	Frequency (MHz)	Channel	Frequency (MHz)	Channel	Frequency (MHz)	Channel	Frequency (MHz)
36	5180			38	5190		
40	5200			46	5230		
44	5220						
48	5240						

802.11a / 802.11n 20M					
Band 4					
Channel	Frequency (MHz)	Channel	Frequency (MHz)	Channel	Frequency (MHz)
149	5745	153	5765	157	5785
161	5805	165	5825		

802.11n 40M			
Band 4			
Channel	Frequency (MHz)	Channel	Frequency (MHz)
151	5755	159	5795

2. Table for Filed Antenna

Ant.	Brand	Model Name	Antenna Type	Connector	Gain (dBi)	Note
0		N/A	Dipole Antenna	N/A	4.6	2.4G
1		N/A	Dipole Antenna	N/A	4.6	2.4G
0		N/A	Dipole Antenna	N/A	5.2	5G
1		N/A	Dipole Antenna	N/A	5.2	5G



3.2 THE MAXIMUM SAR_{1G} VALUES

Body SAR Configuration

Test Mode	Frequency (MHz)	Test Position	Separation Distance	Test Result SAR _{1g} (W/kg)	Limit SAR _{1g} (W/kg)
802.11a	5825	Test Position 2 /Front Side	10mm	0.082	1.6

Note:

(1) Equipment Under Test (EUT) has a WIFI antenna that can be used for TX/RX. During SAR test of the EUT, SAR is only tested for 802.11b. SAR is not required for 802.11g/n channels when the maximum average output power is less than 0.25dB higher than that measured on the corresponding 802.11b channels.

(2) KDB 248227 - SAR is not required for 802.11a HT20/HT40 channels when the maximum average output power is less than 1/4 dB higher than that measured on the corresponding 802.11a channels.

3.3 LABORATORY ENVIRONMENT

Temperature	Min. = 18°C, Max. = 25°C
Relative humidity	Min. = 30%, Max. = 70%
Ground system resistance	< 0.5 Ω
Ambient noise is checked and found very low and in compliance with requirement of standards. Reflection of surrounding objects is minimized and in compliance with requirement of standards.	



3.4 MAIN TEST INSTRUMENTS

Item	Kind of Equipment	Manufacturer	Type No.	Serial No.	Calibrated until
1	Data Acquisition Electronics	Speag	DAE4	1390	Sep. 10, 2014
2	E-field Probe	Speag	EX3DV4	3932	Sep. 16, 2014
3	Electro Optical Converter	Speag	ECO90	1151	N/A
4	ELI4 Phantom	Speag	ELI4 Phantom V5.0	1222	N/A
5	System Validation Dipole	Speag	D2450V2	919	Sep. 05, 2014
6	Power Amplifier	Speag	ZHL-42W	N/A	N/A
7	Power Amplifier	Speag	ZVE-8G	N/A	N/A
8	ENA Network Analyzer	Agilent	E5071C	MY46102965	Apr. 25, 2014
9	Dielectric Probe Kit	Agilent	85070E	2593	N/A
10	P-series power meter	Agilent	N1911A	MY45100473	Apr. 25, 2014
11	wideband power sensor	Agilent	N1921A	MY51100041	Apr. 25, 2014
12	power Meter	ANRITSU	ML2495A	1128009	May. 24, 2014
13	Pulse Power Sensor	ANRITSU	MA 2411B	1027500	May. 24, 2014
14	MXG Analog Signal Generator	Agilent	N5181A	MY49060710	Nov. 09, 2014
15	System Validation Dipole	Speag	D5GHzV2	1160	Sep. 18, 2014

Remark: " N/A" denotes no model name, serial No. or calibration specified.
 All calibration period of equipment list is one year.

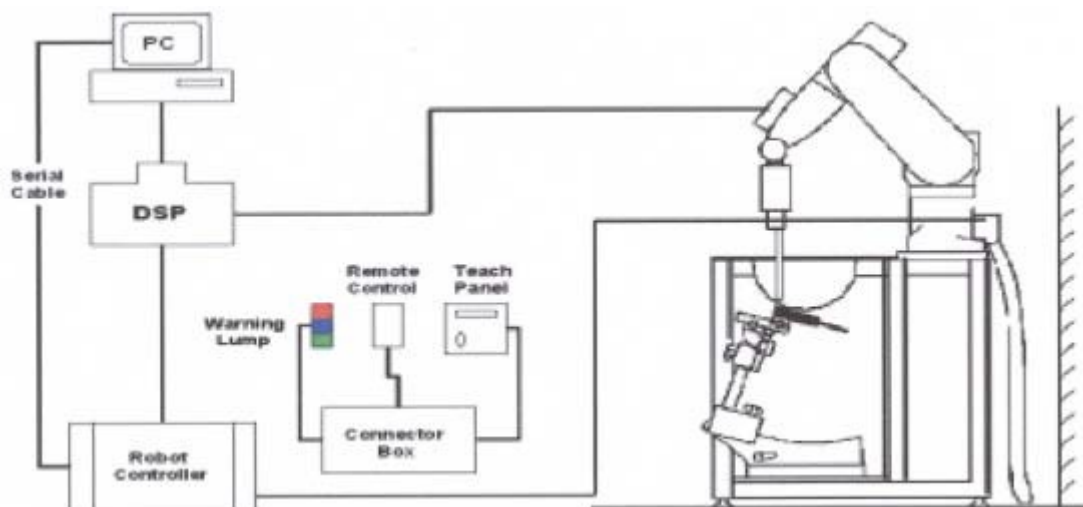
4. SAR MEASUREMENTS SYSTEM CONFIGURATION

4.1 SAR MEASUREMENT SET-UP

The DASY5 system for performing compliance tests consists of the following items:

1. A standard high precision 6-axis robot (Stäubli RX family) with controller and software. An arm extension for accommodating the data acquisition electronics (DAE).
2. A dosimetric probe, i.e. an isotropic E-field probe optimized and calibrated for usage in tissue simulating liquid. The probe is equipped with an optical surface detector system.
3. A data acquisition electronic (DAE) which performs the signal amplification, signal multiplexing, AD-conversion, offset measurements, mechanical surface detection, collision detection, etc. The unit is battery powered with standard or rechargeable batteries. The signal is optically transmitted to the EOC.
4. A unit to operate the optical surface detector which is connected to the EOC.
5. The Electro-Optical Coupler (EOC) performs the conversion from the optical into a digital electric signal of the DAE. The EOC is connected to the DASY5 measurement server.
6. The DASY5 measurement server, which performs all real-time data evaluation for field measurements and surface detection, controls robot movements and handles safety operation. A computer operating Windows 7
7. DASY5 software and SEMCAD data evaluation software.
8. Remote control with teach panel and additional circuitry for robot safety such as warning lamps, etc.
9. The generic twin phantom enabling the testing of left-hand and right-hand usage.
10. The device holder for handheld mobile phones.
11. Tissue simulating liquid mixed according to the given recipes.
12. System validation dipoles allowing to validate the proper functioning of the system.

4.1.1 Test Setup Layout





4.2 DASY5 E-FIELD PROBE SYSTEM

The SAR measurements were conducted with the dosimetric probe ES3DV3 (manufactured by SPEAG), designed in the classical triangular configuration and optimized for dosimetric evaluation.

4.2.1 ES3DV3 PROBE SPECIFICATION

Construction	Symmetrical design with triangular core Interleaved sensors Built-in shielding against static charges PEEK enclosure material (resistant to organic solvents, e.g., DGBE)
Calibration	ISO/IEC 17025 calibration service available
Frequency	10 MHz to 4 GHz Linearity: ± 0.2 dB (30 MHz to 4 GHz)
Directivity	± 0.2 dB in HSL (rotation around probe axis) ± 0.3 dB in tissue material (rotation normal to probe axis)
Dynamic Range	5 μ W/g to > 100 mW/g Linearity: ± 0.2 dB
Dimensions	Overall length: 330 mm (Tip: 20 mm) Tip diameter: 3.9 mm (Body: 12 mm) Distance from probe tip to dipole centers: 2.0 mm



EX3DV4 E-field Probe



4.2.2 E-FIELD PROBE CALIBRATION

Each probe is calibrated according to a dosimetric assessment procedure with accuracy better than $\pm 10\%$. The spherical isotropy was evaluated and found to be better than $\pm 0.25\text{dB}$. The sensitivity parameters (NormX, NormY, NormZ), the diode compression parameter (DCP) and the conversion factor (ConvF) of the probe are tested.

The free space E-field from amplified probe outputs is determined in a test chamber. This is performed in a TEM cell for frequencies below 1 GHz, and in a wave guide above 1 GHz for free space. For the free space calibration, the probe is placed in the volumetric center of the cavity and at the proper orientation with the field. The probe is then rotated 360 degrees.

E-field temperature correlation calibration is performed in a flat phantom filled with the appropriate simulated brain tissue. The measured free space E-field in the medium correlates to temperature rise in a dielectric medium. For temperature correlation calibration a RF transparent thermistor-based temperature probe is used in conjunction with the E-field probe.

$$\text{SAR} = C \frac{\Delta T}{\Delta t}$$

Where: Δt = Exposure time (30 seconds),

C = Heat capacity of tissue (brain or muscle),

ΔT = Temperature increase due to RF exposure.

Or
$$\text{SAR} = \frac{|E|^2 \sigma}{\rho}$$

Where: σ = Simulated tissue conductivity,

ρ = Tissue density (kg/m^3).



4.2.3 OTHER TEST EQUIPMENT

4.2.3.1. Device Holder for Transmitters

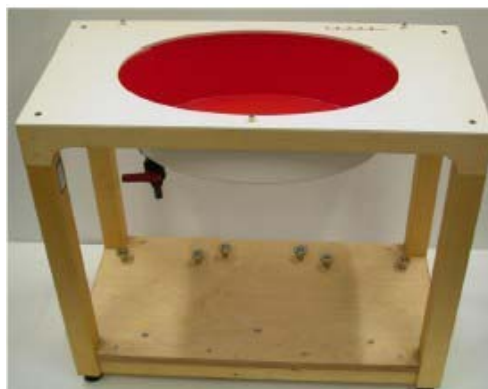
Construction: Simple but effective and easy-to-use extension for Mounting Device that facilitates the testing of larger devices (e.g., laptops, cameras, etc.) It is lightweight and fits easily on the upper part of the Mounting Device in place of the phone positioner. The extension is fully compatible with the Twin SAM, ELI4 and SAM v6.0 Phantoms.

Material: POM, Acrylic glass, Foam

4.2.3.2 Phantom

Phantom for compliance testing of handheld and body-mounted wireless devices in the frequency range of 30 MHz to 6 GHz. ELI is fully compatible all known tissuesimulating liquids. ELI has been optimized regarding its performance and can be integrated into our standard phantom tables. A cover prevents evaporation of the liquid. Reference markings on the phantom allow installation of the complete setup, including all predefined phantom positions and measurement grids, by teaching three points. The phantom is compatible with all SPEAG dosimetric probes and dipoles.

Shell Thickness	2±0.1 mm
Filling Volume	Approx. 30 liters
Dimensions	190 X 600 X 0 mm (H x L x W)
Available	Special



ELI4 Phantom



4.2.4 SCANNING PROCEDURE

The DASY5 installation includes predefined files with recommended procedures for measurements and validation. They are read-only document files and destined as fully defined but unmeasured masks. All test positions (head or body-worn) are tested with the same configuration of test steps differing only in the grid definition for the different test positions.

The "reference" and "drift" measurements are located at the beginning and end of the batch process. They measure the field drift at one single point in the liquid over the complete procedure. The indicated drift is mainly the variation of the DUT's output power and should vary max. $\pm 5\%$.

The "surface check" measurement tests the optical surface detection system of the DASY5 system by repeatedly detecting the surface with the optical and mechanical surface detector and comparing the results. The output gives the detecting heights of both systems, the difference between the two systems and the standard deviation of the detection repeatability. Air bubbles or refraction in the liquid due to separation of the sugar-water mixture gives poor repeatability (above $\pm 0.1\text{mm}$). To prevent wrong results tests are only executed when the liquid is free of air bubbles. The difference between the optical surface detection and the actual surface depends on the probe and is specified with each probe. (It does not depend on the surface reflectivity or the probe angle to the surface within $\pm 30^\circ$.)

- Area Scan

The Area Scan is used as a fast scan in two dimensions to find the area of high field values before running a detailed measurement around the hot spot. Before starting the area scan a grid spacing of 10 mm x 10 mm is set. During the scan the distance of the probe to the phantom remains unchanged. After finishing area scan, the field maxima within a range of 2 dB will be ascertained.

- Zoom Scan

Zoom Scans are used to estimate the peak spatial SAR values within a cubic averaging volume containing 1 g and 10 g of simulated tissue. The default Zoom Scan is done by 7x7x7 points within a cube whose base is centered around the maxima found in the preceding area scan.

- Spatial Peak Detection

The procedure for spatial peak SAR evaluation has been implemented and can determine values of masses of 1g and 10g, as well as for user-specific masses. The DASY5 system allows evaluations that combine measured data and robot positions, such as:

- maximum search
- extrapolation
- boundary correction
- peak search for averaged SAR

During a maximum search, global and local maxima searches are automatically performed in 2-D after each Area Scan measurement with at least 6 measurement points. It is based on the evaluation of the local SAR gradient calculated by the Quadratic Shepard's method. The algorithm will find the global maximum and all local maxima within -2 dB of the global maxima for all SAR distributions.

Extrapolation routines are used to obtain SAR values between the lowest measurement points and the inner phantom surface. The extrapolation distance is determined by the surface detection distance and the probe sensor offset. Several measurements at different distances are necessary for the extrapolation. Extrapolation routines require at least 10 measurement points in 3-D space. They are used in the Zoom Scan to obtain SAR values between the lowest measurement points and the inner phantom surface. The routine uses the modified Quadratic Shepard's method for extrapolation. For a grid using 7x7x7 measurement points with 5mm resolution amounting to 343 measurement points, the uncertainty of the extrapolation routines is less than 1% for 1g and 10g cubes.



4.2.5 DATA STORAGE AND EVALUATION

4.2.5.1 Data Storage

The DASY5 software stores the acquired data from the data acquisition electronics as raw data (in microvolt readings from the probe sensors), together with all necessary software parameters for the data evaluation (probe calibration data, liquid parameters and device frequency and modulation data) in measurement files with the extension “.DAE4”. The software evaluates the desired unit and format for output each time the data is visualized or exported. This allows verification of the complete software setup even after the measurement and allows correction of incorrect parameter settings. For example, if a measurement has been performed with a wrong crest factor parameter in the device setup, the parameter can be corrected afterwards and the data can be re-evaluated.

The measured data can be visualized or exported in different units or formats, depending on the selected probe type ([V/m], [A/m], [°C], [mW/g], [mW/cm²], [dBrel], etc.). Some of these units are not available in certain situations or show meaningless results, e.g., a SAR output in a lossless media will always be zero. Raw data can also be exported to perform the evaluation with other software packages.



4.4.2 Data Evaluation by SEMCAD

The SEMCAD software automatically executes the following procedures to calculate the field units from the microvolt readings at the probe connector. The parameters used in the evaluation are stored in the configuration modules of the software:

Probe parameters:	Sensitivity	Normi, a ₁₀ , a ₁₁ , a ₁₂
	Conversion factor	ConvF _i
	Diode compression point	Dcp _i
Device parameters:	Frequency	f
	Crest factor	cf
Media parameters:	Conductivity	
	Density	

These parameters must be set correctly in the software. They can be found in the component documents or they can be imported into the software from the configuration files issued for the DASYS components. In the direct measuring mode of the multimeter option, the parameters of the actual system setup are used. In the scan visualization and export modes, the parameters stored in the corresponding document files are used.

The first step of the evaluation is a linearization of the filtered input signal to account for the compression characteristics of the detector diode. The compensation depends on the input signal, the diode type and the DC-transmission factor from the diode to the evaluation electronics.

If the exciting field is pulsed, the crest factor of the signal must be known to correctly compensate for peak power. The formula for each channel can be given as:

$$V_i = U_i + U_i^2 \cdot cf / dcp_i$$

- With V_i = compensated signal of channel i (i = x, y, z)
- U_i = input signal of channel i (i = x, y, z)
- cf = crest factor of exciting field (DASY parameter)
- dcp_i = diode compression point (DASY parameter)



Neutron Engineering Inc.

From the compensated input signals the primary field data for each channel can be evaluated:

$$\text{E-field probes: } E_i = (V_i / \text{Norm}_i \cdot \text{ConvF})^{1/2}$$

$$\text{H-field probes: } H_i = (V_i)^{1/2} \cdot (a_{i0} + a_{i1} f + a_{i2} f^2) / f$$

With V_i = compensated signal of channel i ($i = x, y, z$)

Norm_i = sensor sensitivity of channel i ($i = x, y, z$)
[mV/(V/m)²] for E-field Probes

ConvF = sensitivity enhancement in solution

a_{ij} = sensor sensitivity factors for H-field probes

f = carrier frequency [GHz]

E_i = electric field strength of channel i in V/m

H_i = magnetic field strength of channel i in A/m

The RSS value of the field components gives the total field strength (Hermitian magnitude):

$$E_{\text{tot}} = (E_x^2 + E_y^2 + E_z^2)^{1/2}$$

The primary field data are used to calculate the derived field units.

$$\text{SAR} = (E_{\text{tot}})^2 \cdot \sigma / (\rho \cdot 1000)$$

With SAR = local specific absorption rate in mW/g

E_{tot} = total field strength in V/m
= conductivity in [mho/m] or [Siemens/m]
= equivalent tissue density in g/cm³

Note that the density is normally set to 1 (or 1.06), to account for actual brain density rather than the density of the simulation liquid. The power flow density is calculated assuming the excitation field to be a free space field.

$$P_{\text{pwe}} = E_{\text{tot}}^2 / 3770 \text{ or } P_{\text{pwe}} = H_{\text{tot}}^2 \cdot 37.7$$

With P_{pwe} = equivalent power density of a plane wave in mW/cm²

E_{tot} = total field strength in V/m

H_{tot} = total magnetic field strength in A/m



5. TISSUE-EQUIVALENT LIQUID

5.1 TISSUE-EQUIVALENT LIQUID INGREDIENTS

The liquid is consisted of water, salt and Glycol. The liquid has previously been proven to be suited for worst-case. The Table 2 shows the detail solution. It's satisfying the latest tissue dielectric parameters requirements proposed

Composition of the Tissue Equivalent Matter

MIXTURE%	FREQUENCY 2450MHz
Water	62.7
Glycol	36.8
Salt	0.5
Dielectric Parameters Target Value	f=2450MHz $\epsilon=39.20$ $\sigma=1.80$

5.2 TISSUE-EQUIVALENT LIQUID PROPERTIES

Dielectric Performance of Tissue Simulating Liquid

Frequency (MHz)	Description	Dielectric Parameters		Temp °C
		ϵ_r	σ (s/m)	
2450	Target value ±5% within	52.70 50.07-55.34	1.95 1.85-2.048	22.0
	Measurement value 2013-11-25	51.41	2.01	22.7
5200	Target value ±5% within	49.00 46.55~51.45	5.30 5.04~5.57	22.0
	Measurement value 2013-11-26	49.50	5.40	23.6
5800	Target value ±5% within	48.20 45.79~50.61	6.00 5.70~6.30	22.0
	Measurement value 2013-11-26	48.10	6.14	23.6

6. SYSTEM CHECK

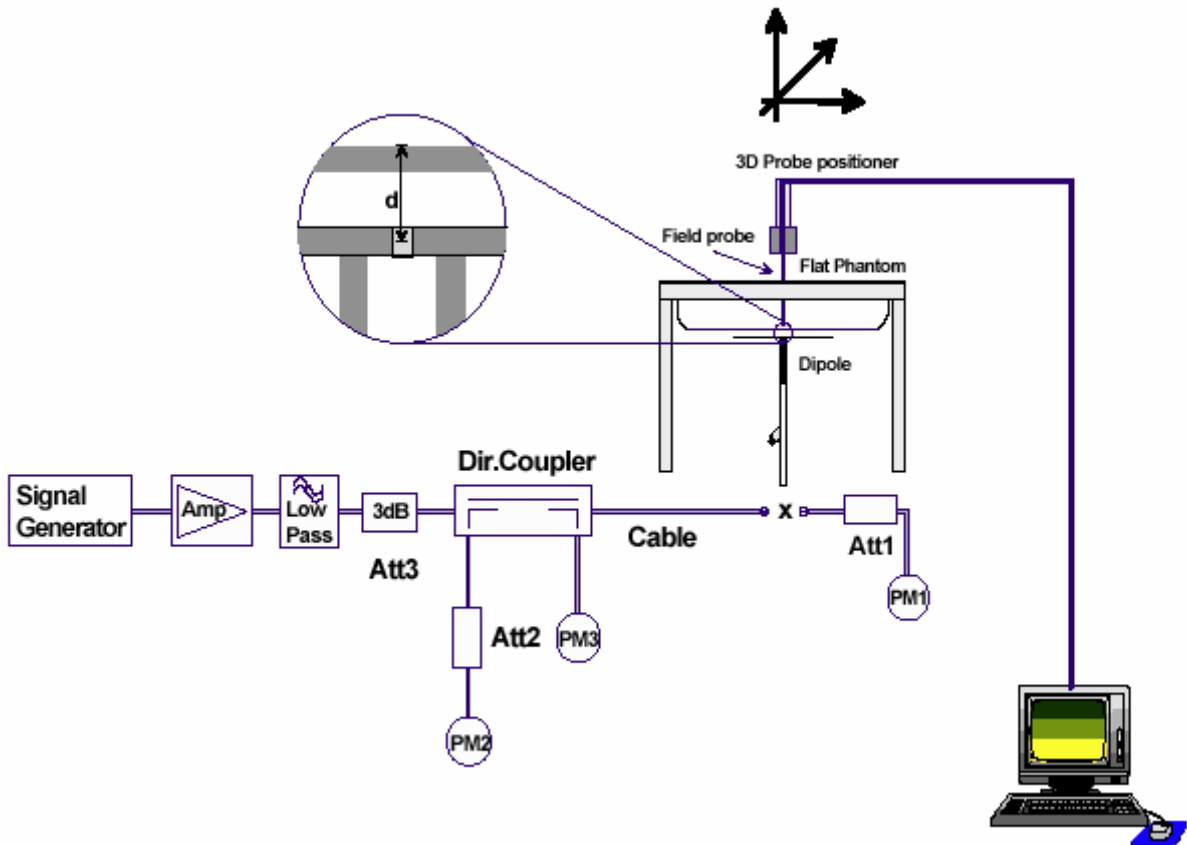
6.1 DESCRIPTION OF SYSTEM CHECK

The manufacturer calibrates the probes annually. Dielectric parameters of the tissue simulants were measured every day using the dielectric probe kit and the network analyzer. A system check measurement was made following the determination of the dielectric parameters of the simulant, using the dipole validation kit. A power level of 250 mW was supplied to the dipole antenna, which was placed under the flat section of the twin SAM phantom. The system check results (dielectric parameters and SAR values) are given in the 6.2.

System check results have to be equal or near the values determined during dipole calibration with the relevant liquids and test system ($\pm 10\%$).

System check is performed regularly on all frequency bands where tests are performed with the DASY5 system.

System Check Set-up





6.2 DESCRIPTION OF SYSTEM CHECK

System Check in Tissue Simulating Liquid

Frequency (MHz)	Test Date	Dielectric Parameters		Temp	250mW Measured SAR _{1g}	1W Normalized SAR _{1g}	1W Target SAR _{1g} (±10% deviation)
		ϵ_r	σ (s/m)	(°C)	(W/kg)		
2450	2013-11-25	51.41	2.01	22.70	12.60	50.40	49.30 (44.37~54.23)

Frequency (MHz)	Test Date	Dielectric Parameters		Temp	100mW Measured SAR _{1g}	1W Normalized SAR _{1g}	1W Target SAR _{1g} (±10% deviation)
		ϵ_r	σ (s/m)	(°C)	(W/kg)		
5200	2013-11-26	49.50	5.40	23.60	7.04	70.40	74.00 (66.60~81.40)
5800	2013-11-26	48.10	6.14	23.60	6.92	69.20	72.50 (65.25~79.75)

Note: 1. The graph results see Appendix 2.
 2. Target Value derives from the calibration certificate



7. OPERATIONAL CONDITIONS DURING TEST

7.1 General Description of Test Procedures

For WLAN SAR testing, WLAN engineering testing software installed on the DUT can provide continuous transmitting RF signal. This RF signal utilized in SAR measurement has almost 100% duty cycle and its crest factor is 1.

For the 802.11b/g/n SAR tests, a communication link is set up with the test mode software for WIFI mode test. During the test, at the each test frequency channel, the EUT is operated at the RF continuous emission mode. Each channel should be tested at the lowest data rate. Testing at higher data rates is not required when the maximum average output power is less than 0.25dB higher than those measured at the lowest data rate.

802.11b/g operating modes are tested independently according to the service requirements in each frequency band. 802.11b/g modes are tested on channels 1, 6, 11; however, if output power reduction is necessary for channels 1 and /or 11 to meet restricted band requirements the highest output channels closest to each of these channels must be tested instead.

SAR is not required for 802.11g/n channels when the maximum average output power is less than 0.25dB higher than that measured on the corresponding 802.11b channels.

KDB 248227 - SAR is not required for 802.11a HT40 channels when the maximum average output power is less than 1/4 dB higher than that measured on the corresponding 802.11a channels.

7.2 Test Position

For each channel, the EUT is tested at the following 2 test positions:

Test Position 1: The bottom side of the EUT towards the bottom of the flat phantom distance 5mm.
(APPENDIX 8)

Test Position 2: The front side of the EUT towards the bottom of the flat phantom distance 10mm.
(APPENDIX 8)



8. TEST RESULT

8.1 CONDUCTED POWER RESULTS

Test Mode	Data Rate (Mbps)	Test Results (dBm)		
		Conducted AV		
		2412MHz	2437MHz	2462MHz
802.11b	1	12.71	12.67	12.68
	2	12.62	12.55	12.54
	5.5	12.55	12.48	12.25
	11	12.41	12.29	12.17
802.11g	6	12.7	12.65	12.54
	9	12.64	12.58	12.46
	12	12.51	12.49	12.48
	18	12.53	12.37	12.36
	24	12.35	12.39	12.25
	36	12.37	12.22	12.27
	48	12.14	12.11	12.16
	54	12.06	12.02	12.11



Test Mode	Data Rate (Mbps)	Test Results (dBm)		
		Conducted AV		
		2412MHz	2437MHz	2462MHz
802.11n HT20 (ANT 0)	MCS0	9.86	9.83	9.82
	MCS1	9.77	9.72	9.73
	MCS2	9.71	9.68	9.65
	MCS3	9.66	9.63	9.56
	MCS4	9.55	9.54	9.51
	MCS5	9.42	9.58	9.55
	MCS6	9.49	9.46	9.41
	MCS7	9.34	9.42	9.43
	MCS8	9.31	9.37	9.32
	MCS9	9.26	9.41	9.35
	MCS10	9.20	9.13	9.11
	MCS11	9.14	9.07	9.08
	MCS12	9.06	9.03	9.01
	MCS13	9.12	8.89	8.94
	MCS14	9.01	8.93	8.87
MCS15	8.92	8.84	8.83	



Test Mode	Data Rate (Mbps)	Test Results (dBm)		
		Conducted AV		
		2412MHz	2437MHz	2462MHz
802.11n HT20 (ANT 1)	MCS0	9.87	9.91	9.82
	MCS1	9.81	9.85	9.62
	MCS2	9.75	9.78	9.65
	MCS3	9.67	9.71	9.52
	MCS4	9.54	9.65	9.55
	MCS5	9.55	9.61	9.48
	MCS6	9.47	9.55	9.44
	MCS7	9.41	9.47	9.35
	MCS8	9.32	9.35	9.32
	MCS9	9.37	9.24	9.28
	MCS10	9.25	9.12	9.22
	MCS11	9.3	9.07	9.11
	MCS12	9.21	9.12	9.08
	MCS13	9.14	9.08	9.02
	MCS14	9.07	9.01	8.89
MCS15	8.88	8.91	8.92	



Test Mode	Data Rate (Mbps)	Test Results (dBm)		
		Conducted AV		
		2412MHz	2437MHz	2462MHz
802.11n HT20 (Total)	MCS8	12.33	12.37	12.33
	MCS9	12.33	12.34	12.33
	MCS10	12.24	12.14	12.18
	MCS11	12.23	12.08	12.11
	MCS12	12.15	12.09	12.06
	MCS13	12.14	12.00	11.99
	MCS14	12.05	11.98	11.89
	MCS15	11.91	11.89	11.89



Test Mode	Data Rate (Mbps)	Test Results (dBm)		
		Conducted AV		
		2422MHz	2437MHz	2452MHz
802.11n HT40 (ANT 0)	MCS0	9.76	9.83	9.80
	MCS1	9.68	9.77	9.74
	MCS2	9.66	9.63	9.68
	MCS3	9.53	9.64	9.57
	MCS4	9.55	9.53	9.55
	MCS5	9.49	9.51	9.48
	MCS6	9.36	9.45	9.44
	MCS7	9.23	9.39	9.38
	MCS8	9.16	9.33	9.32
	MCS9	9.12	9.28	9.19
	MCS10	9.08	9.25	9.08
	MCS11	9.02	9.18	9.01
	MCS12	8.89	9.11	9.05
	MCS13	8.92	8.89	8.92
	MCS14	8.85	8.93	8.85
MCS15	8.72	8.75	8.81	



Test Mode	Data Rate (Mbps)	Test Results (dBm)		
		Conducted AV		
		2422MHz	2437MHz	2452MHz
802.11n HT40 (ANT 1)	MCS0	9.87	9.76	9.82
	MCS1	9.71	9.69	9.75
	MCS2	9.66	9.58	9.63
	MCS3	9.54	9.46	9.58
	MCS4	9.56	9.39	9.53
	MCS5	9.48	9.35	9.48
	MCS6	9.42	9.26	9.41
	MCS7	9.35	9.18	9.32
	MCS8	9.32	9.02	9.34
	MCS9	9.23	9.13	9.25
	MCS10	9.12	9.09	9.11
	MCS11	9.05	9.01	9.15
	MCS12	9.01	8.96	9.09
	MCS13	8.95	8.82	8.94
	MCS14	8.82	8.77	8.88
MCS15	8.79	8.68	8.77	



Test Mode	Data Rate (Mbps)	Test Results (dBm)		
		Conducted AV		
		2422MHz	2437MHz	2452MHz
802.11n HT40 (Total)	MCS8	12.25	12.19	12.34
	MCS9	12.19	12.22	12.23
	MCS10	12.11	12.18	12.11
	MCS11	12.05	12.11	12.09
	MCS12	11.96	12.05	12.08
	MCS13	11.95	11.87	11.94
	MCS14	11.85	11.86	11.88
	MCS15	11.77	11.73	11.80



Test Mode	Data Rate (Mbps)	Test Results (dBm)							
		Conducted AV							
		5180	5200	5220	5240	5745	5765	5785	5825
802.11a	6	13.25	12.76	13.02	13.09	13.14	13.11	13.14	13.22
	9	13.22	12.67	12.98	13.01	13.05	13.02	13.04	13.08
	12	13.15	12.65	12.87	12.95	12.92	12.91	12.95	12.97
	18	13.12	12.49	12.91	12.82	12.84	12.87	12.83	12.85
	24	13.05	12.55	12.79	12.75	12.69	12.75	12.74	12.88
	36	13.01	12.34	12.74	12.67	12.75	12.79	12.65	12.75
	48	13.06	12.28	12.68	12.51	12.58	12.64	12.52	12.69
	54	12.91	12.32	12.54	12.58	12.52	12.55	12.54	12.52



Test Mode	Data Rate (Mbps)	Test Results (dBm)							
		Conducted AV							
		5180	5200	5220	5240	5745	5765	5785	5825
802.11n HT20 (ANT 0)	MCS0	8.97	8.65	8.62	8.74	9.24	9.12	9.14	9.21
	MCS1	8.82	8.51	8.52	8.65	9.15	9.08	9.07	9.12
	MCS2	8.80	8.44	8.46	8.62	9.11	8.99	9.01	9.05
	MCS3	8.76	8.32	8.31	8.58	9.08	8.95	8.95	8.99
	MCS4	8.74	8.18	8.24	8.51	8.95	8.89	8.87	8.94
	MCS5	8.71	8.05	8.12	8.45	8.85	8.92	8.82	8.89
	MCS6	8.66	8.12	8.07	8.38	8.92	8.85	8.75	8.91
	MCS7	8.65	8.01	7.89	8.41	8.81	8.79	8.77	8.85
	MCS8	8.60	7.98	7.91	8.37	8.77	8.71	8.72	8.78
	MCS9	8.63	7.95	7.82	8.32	8.71	8.67	8.65	8.75
	MCS10	8.61	7.91	7.86	8.27	8.65	8.54	8.62	8.71
	MCS11	8.58	7.85	7.79	8.22	8.59	8.46	8.68	8.64
	MCS12	8.47	7.72	7.75	8.19	8.48	8.41	8.55	8.52
	MCS13	8.54	7.68	7.71	8.20	8.37	8.38	8.49	8.55
	MCS14	8.32	7.62	7.68	8.14	8.42	8.32	8.41	8.47
MCS15	8.12	7.55	7.57	8.08	8.34	8.21	8.38	8.42	



Test Mode	Data Rate (Mbps)	Test Results (dBm)							
		Conducted AV							
		5180	5200	5220	5240	5745	5765	5785	5825
802.11n HT20 (ANT 1)	MCS0	8.71	9.12	9.08	9.06	9.22	9.13	9.15	9.35
	MCS1	8.65	9.07	9.01	8.99	9.13	9.09	9.05	9.19
	MCS2	8.62	8.98	8.94	8.92	9.05	8.97	8.99	9.12
	MCS3	8.54	8.92	8.95	8.85	8.98	8.94	8.91	9.09
	MCS4	8.56	8.89	8.91	8.87	8.94	8.88	8.85	8.97
	MCS5	8.51	8.91	8.88	8.81	8.87	8.92	8.81	8.88
	MCS6	8.48	8.85	8.82	8.75	8.92	8.85	8.75	8.92
	MCS7	8.44	8.79	8.79	8.67	8.85	8.79	8.77	8.82
	MCS8	8.41	8.72	8.71	8.61	8.79	8.73	8.72	8.76
	MCS9	8.37	8.67	8.64	8.55	8.75	8.67	8.67	8.71
	MCS10	8.32	8.55	8.66	8.46	8.72	8.56	8.62	8.65
	MCS11	8.29	8.46	8.61	8.41	8.65	8.46	8.68	8.54
	MCS12	8.21	8.41	8.52	8.38	8.52	8.42	8.57	8.42
	MCS13	8.15	8.38	8.44	8.32	8.56	8.37	8.46	8.33
	MCS14	8.17	8.34	8.31	8.27	8.41	8.32	8.40	8.41
MCS15	8.08	8.23	8.21	8.22	8.43	8.21	8.35	8.32	



Test Mode	Data Rate (Mbps)	Test Results (dBm)							
		Conducted AV							
		5180	5200	5220	5240	5745	5765	5785	5825
802.11n HT20 (Total)	MCS8	11.85	11.90	11.87	11.91	12.24	12.14	12.16	12.29
	MCS9	11.75	11.81	11.78	11.83	12.15	12.10	12.07	12.17
	MCS10	11.72	11.73	11.72	11.78	12.09	11.99	12.01	12.10
	MCS11	11.66	11.64	11.65	11.73	12.04	11.96	11.94	12.05
	MCS12	11.66	11.56	11.60	11.70	11.96	11.90	11.87	11.97
	MCS13	11.62	11.51	11.53	11.64	11.87	11.93	11.83	11.90
	MCS14	11.58	11.51	11.47	11.58	11.93	11.86	11.76	11.93
	MCS15	11.56	11.43	11.37	11.55	11.84	11.80	11.78	11.85



Test Mode	Data Rate (Mbps)	Test Results (dBm)			
		Conducted AV			
		5190	5230	5755	5795
802.11n HT40 (ANT 0)	MCS0	8.68	8.85	9.15	9.24
	MCS1	8.59	8.72	9.08	9.12
	MCS2	8.57	8.68	8.97	9.04
	MCS3	8.45	8.65	8.92	8.95
	MCS4	8.32	8.61	8.85	8.92
	MCS5	8.38	8.55	8.87	8.85
	MCS6	8.29	8.52	8.82	8.80
	MCS7	8.22	8.46	8.79	8.75
	MCS8	8.18	8.42	8.72	8.77
	MCS9	8.14	8.38	8.68	8.71
	MCS10	8.08	8.22	8.65	8.64
	MCS11	8.01	8.14	8.62	8.60
	MCS12	7.94	8.05	8.59	8.57
	MCS13	7.91	8.06	8.54	8.59
	MCS14	7.85	7.99	8.44	8.48
MCS15	7.79	7.92	8.38	8.41	



Test Mode	Data Rate (Mbps)	Test Results (dBm)			
		Conducted AV			
		5190	5230	5755	5795
802.11n HT40 (ANT 1)	MCS0	9.06	8.72	9.25	9.23
	MCS1	8.95	8.65	9.13	9.11
	MCS2	8.89	8.63	9.05	9.02
	MCS3	8.82	8.56	8.98	8.94
	MCS4	8.74	8.51	8.91	8.90
	MCS5	8.75	8.48	8.88	8.85
	MCS6	8.72	8.42	8.81	8.92
	MCS7	8.65	8.35	8.75	8.87
	MCS8	8.61	8.34	8.77	8.82
	MCS9	8.59	8.37	8.71	8.77
	MCS10	8.55	8.28	8.65	8.72
	MCS11	8.48	8.21	8.62	8.65
	MCS12	8.44	8.15	8.57	8.49
	MCS13	8.35	8.11	8.55	8.51
	MCS14	8.26	8.08	8.48	8.42
MCS15	8.12	7.97	8.42	8.39	



Test Mode	Data Rate (Mbps)	Test Results (dBm)			
		Conducted AV			
		5190	5230	5755	5795
802.11n HT40 (Total)	MCS8	11.41	11.39	11.76	11.81
	MCS9	11.38	11.39	11.71	11.75
	MCS10	11.33	11.26	11.66	11.69
	MCS11	11.26	11.19	11.63	11.64
	MCS12	11.21	11.11	11.59	11.54
	MCS13	11.15	11.10	11.56	11.56
	MCS14	11.07	11.05	11.47	11.46
	MCS15	10.97	10.96	11.41	11.41



8.2 SAR TEST RESULTS

802.11a/b							
Test Position	Test Mode	Channel Frequency (MHz)	Distance (mm)	Duty Cycle	Drift±0.21dB	Limit SAR 1.6W/kg	
					Drift(dB)	Measured SAR (W/kg)	Graph Results
1	802.11b	2412	5	1:1	-0.06	0.005	1
2	802.11b	2412	10	1:1	0.05	0.077	2
1	802.11a	5180	5	1:1	-0.01	0.020	3
2	802.11a	5180	10	1:1	0.04	0.066	4
1	802.11a	5825	5	1:1	0.06	0.014	5
2	802.11a	5825	10	1:1	0.03	0.082	6

Note: 1. The value with boldface is the maximum SAR Value of each test band.

2. Per FCC KDB Publication 447498 D01, if the reported (scaled) SAR measured at the middle channel or highest output power channel for each test configuration is ≤ 0.8 W/kg then testing at the other channels is not required for such test configuration(s).
3. KDB 248227-SAR is not required for 802.11g/n channels when the maximum average output power is less than 1/4dB higher than measured on the corresponding 802.11b channels.
4. KDB 248227-SAR is not required for 802.11a HT20/HT40 channels when the maximum average output power is less than 1/4 dB higher than that measured on the corresponding 802.11a channels

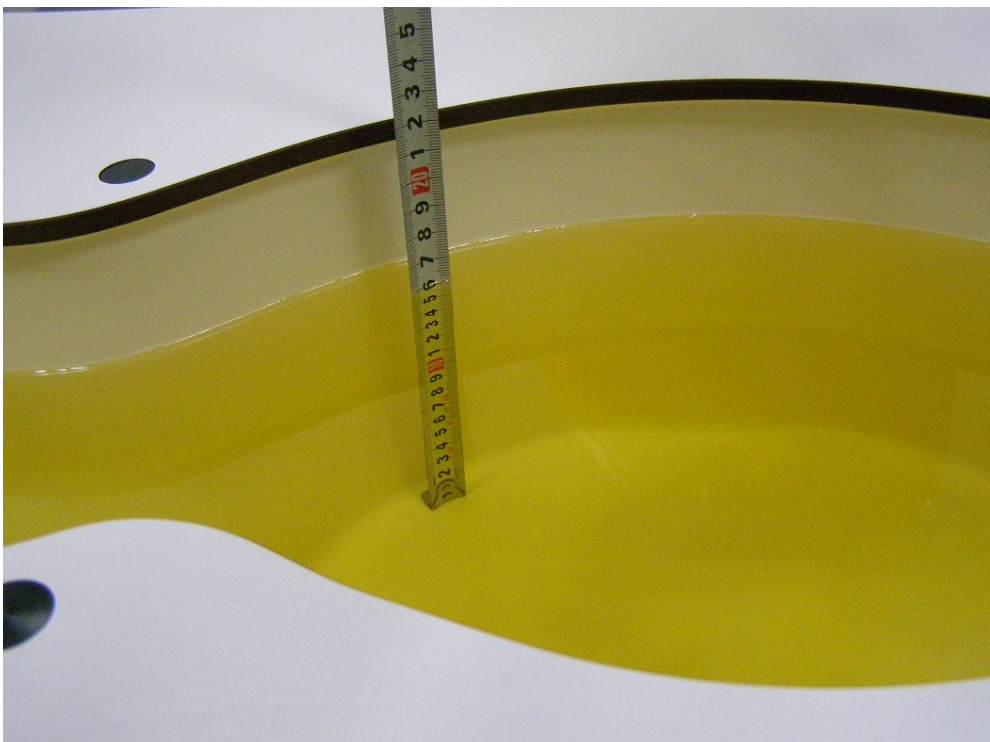
APPENDIX

1. Test Layout

Specific Absorption Rate Test Layout



Liquid depth in the flat Phantom (16cm depth)





2. System Check Results

Date/Time: 11/25/2013 08:33:04

Test Laboratory: Neutron Engineering Inc.

Body 2450MHz ELI v5.0

DUT: Dipole 2450 MHz D2450V2; **Type:** D2450V2; **Serial:** D2450V2 - SN:919

Communication System: UID 0, CW (0); Frequency: 2450 MHz

Medium parameters used: $f = 2450$ MHz; $\sigma = 2.01$ S/m; $\epsilon_r = 51.41$; $\rho = 1000$ kg/m³

Phantom section: Flat Section

Measurement Standard: DASYS (IEEE/IEC/ANSI C63.19-2007)

DASY Configuration:

- Probe: EX3DV4 - SN3932; ConvF(7.4, 7.4, 7.4); Calibrated: 09/16/2013;
- Sensor-Surface: 2mm (Mechanical Surface Detection), $z = 1.0, 31.0$
- Electronics: DAE4 Sn1390; Calibrated: 09/10/2013
- Phantom: ELI v5.0; Type: QDOVA002AA; Serial: TP:1222
- DASYS2 52.8.7(1137); SEMCAD X 14.6.10(7164)

System Performance Check at 2450MHz/d=10mm, Pin=250 mW, dist=2.0mm (EX-Probe)/Area Scan (5x7x1): Measurement grid:

$dx=15$ mm, $dy=15$ mm

Maximum value of SAR (measured) = 19.9 W/kg

System Performance Check at 2450MHz/d=10mm, Pin=250 mW, dist=2.0mm (EX-Probe)/Zoom Scan (7x7x7) (7x7x7)/Cube 0:

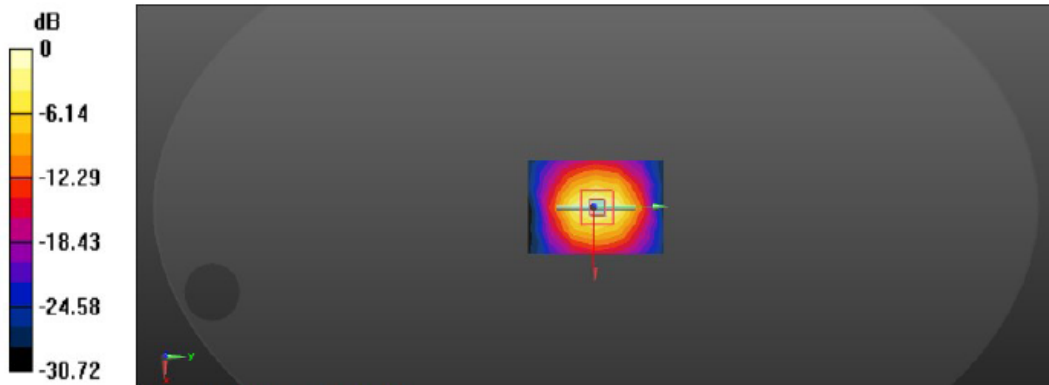
Measurement grid: $dx=5$ mm, $dy=5$ mm, $dz=5$ mm

Reference Value = 104.4 V/m; Power Drift = 0.01 dB

Peak SAR (extrapolated) = 27.0 W/kg

SAR(1 g) = 12.9 W/kg; SAR(10 g) = 5.91 W/kg

Maximum value of SAR (measured) = 19.8 W/kg



0 dB = 19.9 W/kg = 12.99 dBW/kg



Test Laboratory: Neutron Engineering Inc.

D5200 MHz 1126

DUT: Dipole D5GHzV2; **Type:** D5GHzV2; **Serial:** D5GHzV2 - SN:1160

Communication System: UID 0, CW (0); Frequency: 5200 MHz
Medium parameters used $f = 5200$ MHz; $\sigma = 5.4$ S/m; $\epsilon_r = 49.5$; $\rho = 996$ kg/m³

Phantom section: Flat Section
Measurement Standard: DASYS (IEEE/IEC/ANSI C63.19-2007)

DASY Configuration:

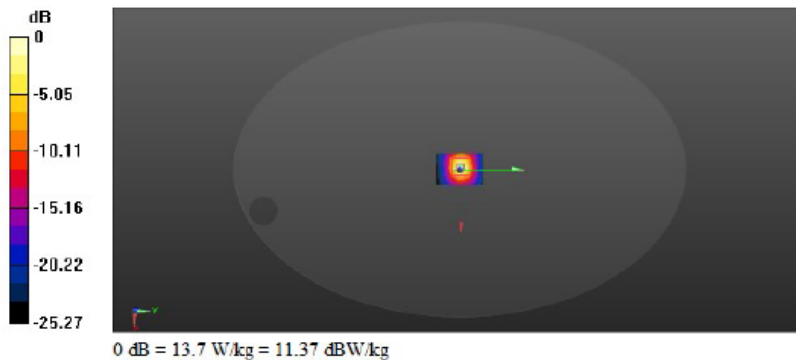
- Probe: EX3DV4 - SN3932; ConvF(4.69, 4.69, 4.69); Calibrated: 09/16/2013;
- Sensor-Surface: 2mm (Mechanical Surface Detection), $z = 1.0, 31.0$
- Electronics: DAE4 Sn1390; Calibrated: 09/10/2013
- Phantom: EL1 v5.0; Type: QDOVA002AA; Serial: TP:1222
- DASYS2 52.8.7(1137); SEMCAD X 14.6.10(7164)

Configuration 2/System Check MSL 5000/Area Scan (41x61x1): Interpolated grid: $dx=10.00$ mm, $dy=10.00$ mm

Reference Value = 35.956 V/m; Power Drift = -0.01 dB
Fast SAR: SAR(1 g) = 6.68 W/kg; SAR(10 g) = 2.34W/kg
Maximum value of SAR (interpolated) = 13.7 W/kg

Configuration 2/System Check MSL 5000/Zoom Scan (7x7x7)/Cube 0: Measurement grid: $dx=5$ mm, $dy=5$ mm, $dz=5$ mm

Reference Value = 35.956 V/m; Power Drift = -0.01 dB
Peak SAR (extrapolated) = 26.4 W/kg
SAR(1 g) = 7.04 W/kg; SAR(10 g) = 2.45W/kg
Maximum value of SAR (measured) = 13.3 W/kg





Test Laboratory: Neutron Engineering Inc.

D5800MHz 1126

DUT: Dipole D5GHzV2; **Type:** D5GHzV2; **Serial:** D5GHzV2 - SN:1160

Communication System: UID 0, CW (0); Frequency: 5800 MHz

Medium parameters used: $f = 5800$ MHz; $\sigma = 6.12$ S/m; $\epsilon_r = 48.1$; $\rho = 996$ kg/m³

Phantom section: Flat Section

Measurement Standard: DASYS (IEEE/IEC/ANSI C63.19-2007)

DASY Configuration:

- Probe: EX3DV4 - SN3932; ConvF(4.19, 4.19, 4.19); Calibrated: 09/16/2013;
- Sensor-Surface: 2mm (Mechanical Surface Detection), $z = 1.0, 31.0$
- Electronics: DAB4 Sn1390; Calibrated: 09/10/2013
- Phantom: ELI v5.0; Type: QDOVA002AA; Serial: TP:1222
- DASYS2 52.8.7(1137); SEMCAD X 14.6.10(7164)

Configuration 2/System Check MSL 5800GHz/Area Scan (41x61x1): Interpolated grid: $dx=10.00$ mm, $dy=10.00$ mm

Reference Value = 34.750 V/m; Power Drift = -0.02 dB

Fast SAR: SAR(1 g) = 6.28 W/kg; SAR(10 g) = 2.02 W/kg

Maximum value of SAR (interpolated) = 13.3 W/kg

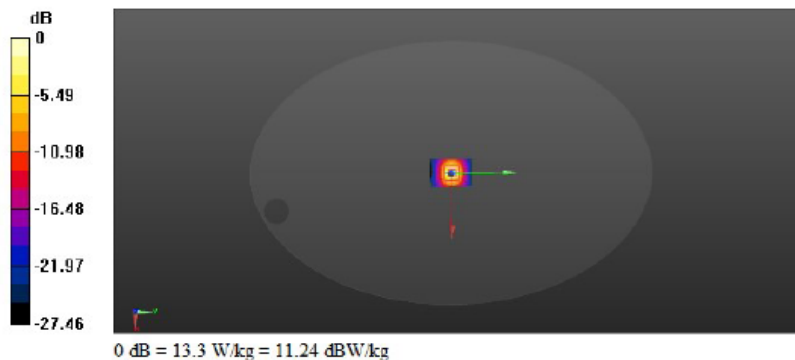
Configuration 2/System Check MSL 5800GHz/Zoom Scan (7x7x7)/Cube 0: Measurement grid: $dx=5$ mm, $dy=5$ mm, $dz=5$ mm

Reference Value = 34.750 V/m; Power Drift = -0.02 dB

Peak SAR (extrapolated) = 30.4 W/kg

SAR(1 g) = 6.92 W/kg; SAR(10 g) = 2.17 W/kg

Maximum value of SAR (measured) = 13.5 W/kg





3. Graph Results

Date/Time: 11/25/2013 14:42:54

Test Laboratory: Neutron Engineering Inc.

WF2151 802.11b Test Position 1 Low(ant0)

DUT: Wireless Dual Band USB Adapter; Type: Sample; Serial: NA

Communication System: UID 0, IEEE 802.11b WiFi 2.4GHz (DSSS,1Mbps) (0); Frequency: 2412 MHz

Medium parameters used (interpolated): $f = 2412$ MHz; $\sigma = 1.968$ S/m; $\epsilon_r = 50.861$; $\rho = 1000$ kg/m³

Phantom section: Flat Section

Measurement Standard: DASYS (IEEE/IEC/ANSI C63.19-2007)

DASY Configuration:

- Probe: EX3DV4 - SN3932; ConvF(7.34, 7.34, 7.34); Calibrated: 09/16/2013;
- Sensor-Surface: 2mm (Mechanical Surface Detection), $z = 1.0, 31.0$
- Electronics: DAB4 Sn1390; Calibrated: 09/10/2013
- Phantom: EL1 v5.0; Type: QDOVA002AA; Serial: TP:1222
- DASY52 52.8.7(1137); SEMCAD X 14.6.10(7164)

Test Position 1/WF2151 802.11B 5mm/Area Scan (13x12x1): Measurement grid: $dx=10$ mm, $dy=10$ mm

Maximum value of SAR (measured) = 0.00889 W/kg

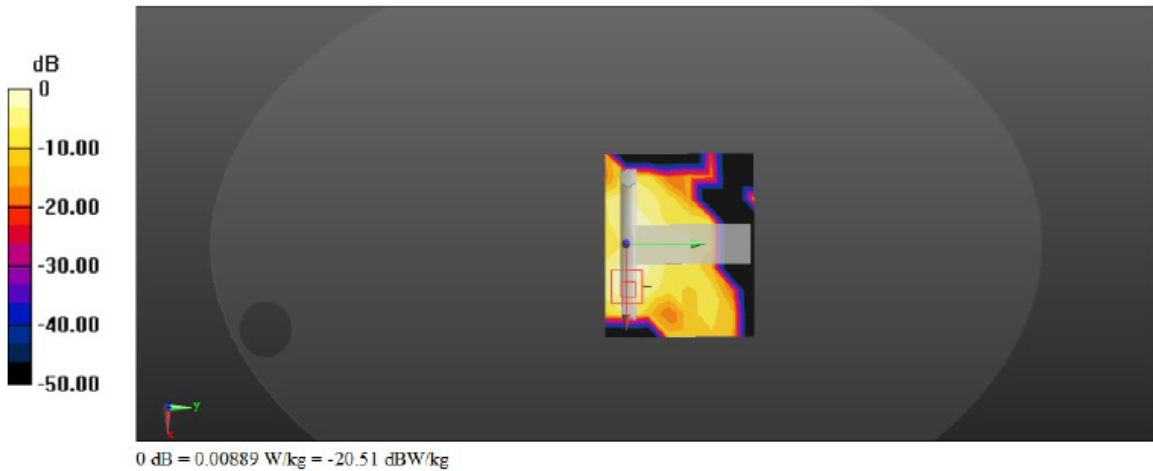
Test Position 1/WF2151 802.11B 5mm/Zoom Scan (7x7x7)/Cube 0: Measurement grid $dx=5$ mm, $dy=5$ mm, $dz=5$ mm

Reference Value = 0.2561 V/m; Power Drift = -0.06 dB

Peak SAR (extrapolated) = 0.0130 W/kg

SAR(1 g) = 0.00535 W/kg; SAR(10 g) = 0.0019 W/kg

Maximum value of SAR (measured) = 0.00926 W/kg





Test Laboratory: Neutron Engineering Inc.

WF2151 802.11b Test Position 2 Low(ant0)

DUT: Wireless Dual Band USB Adapter; Type: Sample; Serial: NA

Communication System: UID 0, IEEE 802.11b WiFi; 2.4GHz (DSSS,1Mbps) (0); Frequency: 2412 MHz

Medium parameters used (interpolated): $f = 2412$ MHz; $\sigma = 1.968$ S/m; $\epsilon_r = 50.861$; $\rho = 1000$ kg/m³

Phantom section: Flat Section

Measurement Standard: DASYS (IEEE/IEC/ANSI C63.19-2007)

DASY Configuration:

- Probe: EX3DV4 - SN3932; ConvF(7.34, 7.34, 7.34); Calibrated: 09/16/2013;
- Sensor-Surface: 2mm (Mechanical Surface Detection), z = 1.0, 31.0
- Electronics: DAE4 Sn1390; Calibrated: 09/10/2013
- Phantom: EL1 v5.0; Type: QDOVA002AA; Serial: IP:1222
- DASYS2 52.8.7(1137); SEMCAD X 14.6.10(7164)

Test Position 2/WF2151 802.11B 10mm/Area Scan (14x19x1): Measurement grid: dx=10mm, dy=10mm

Maximum value of SAR (measured) = 0.110 W/kg

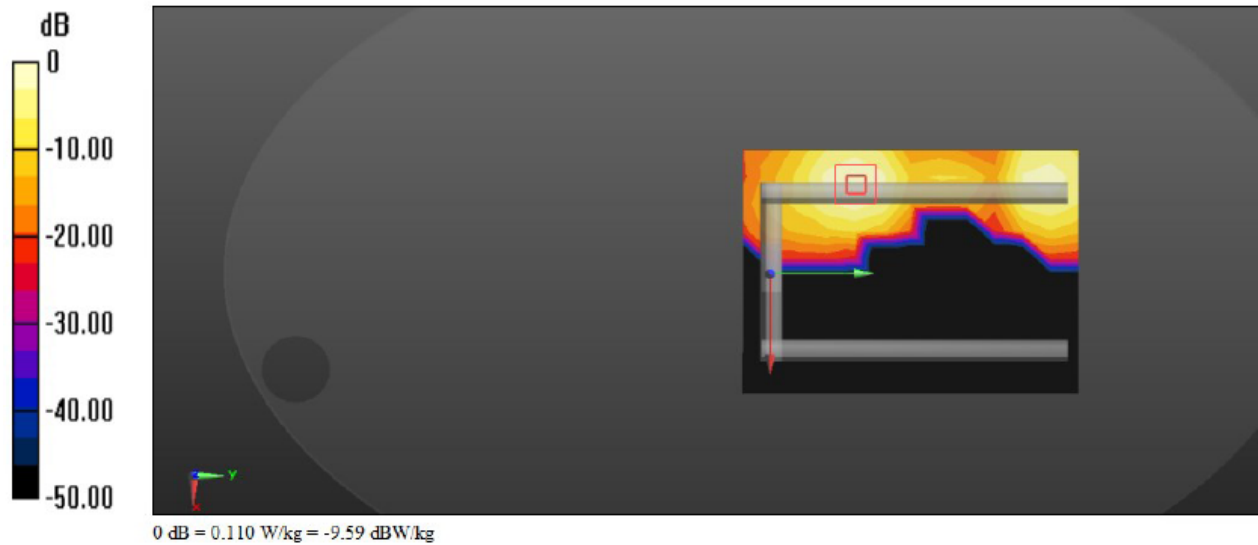
Test Position 2/WF2151 802.11B 10mm/Zoom Scan (7x7x7)/Cube 0: Measurement grid: dx=5mm, dy=5mm, dz=5mm

Reference Value = 0.0523 V/m; Power Drift = 0.05 dB

Peak SAR (extrapolated) = 0.152 W/kg

SAR(1 g) = 0.077 W/kg; SAR(10 g) = 0.038 W/kg

Maximum value of SAR (measured) = 0.111 W/kg





Test Laboratory: Neutron Engineering Inc.

WF2151 802.11a Test Position 1 band1 CH36 (ant1)

DUT: Wireless Dual Band USB Adapter; Type: Sample; Serial: NA

Communication System: UID 0, IEEE 802.11a WiFi 5G(OFDMA, 6 Mbps,) (0); Frequency: 5200 MHz

Medium parameters used: $f = 5200$ MHz; $\sigma = 5.4$ S/m; $\epsilon_r = 49.5$; $\rho = 996$ kg/m³

Phantom section: Flat Section

Measurement Standard: DASYS (IEEE/IEC/ANSI C63.19-2007)

DASY Configuration:

- Probe: EX3DV4 - SN3932; ConvF(4.69, 4.69, 4.69); Calibrated: 09/16/2013;
- Sensor-Surface: 1.4mm (Mechanical Surface Detection), Sensor-Surface: 2mm (Mechanical Surface Detection), $z = 1.0, 31.0$
- Electronics: DAE4 Sn1390; Calibrated: 09/10/2013
- Phantom: ELI v5.0; Type: QDOVA002AA; Serial: TP:1222
- DASYS2 52.8.7(1137); SEMCAD X 14.6.10(7164)

Test Position 1/WF2190 802.11a ant1 5180MHz 5mm/Area Scan (15x13x1): Measurement grid: $dx=10$ mm, $dy=10$ mm

Maximum value of SAR (measured) = 0.0392 W/kg

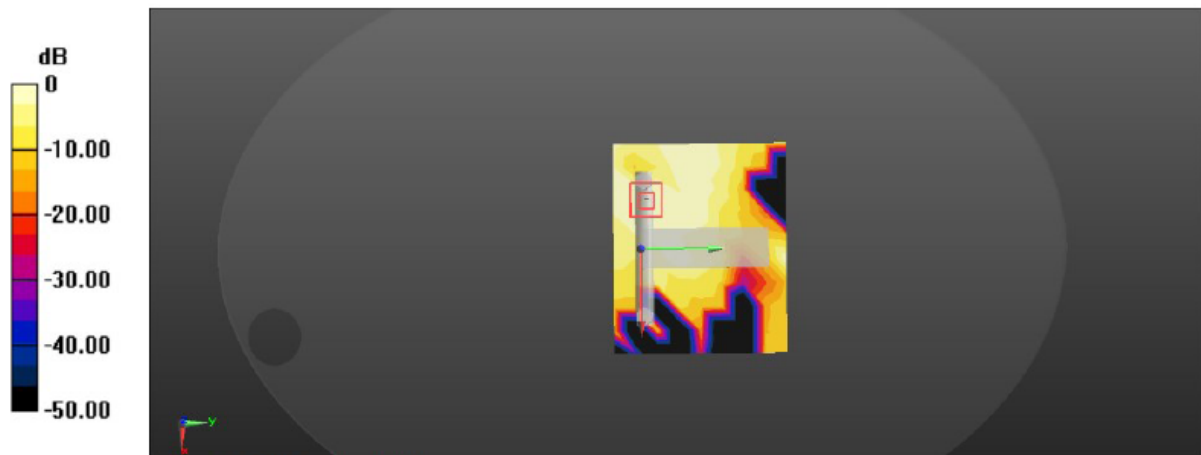
Test Position 1/WF2190 802.11a ant1 5180MHz 5mm/Zoom Scan (7x7x7)/Cube 0: Measurement grid: $dx=5$ mm, $dy=5$ mm, $dz=5$ mm

Reference Value = 1.314 V/m; Power Drift = -0.01 dB

Peak SAR (extrapolated) = 0.127 W/kg

SAR(1 g) = 0.020 W/kg; SAR(10 g) = 0.00767 W/kg

Maximum value of SAR (measured) = 0.0469 W/kg



0 dB = 0.0392 W/kg = -14.07 dBW/kg



Test Laboratory: Neutron Engineering Inc.

WF2151 802.11a Test Position 2 band1 CH36(Ant1)

DUT: Wireless Dual Band USB Adapter; Type: Sample; Serial: NA

Communication System: UID 0, IEEE 802.11a WiFi 5G(OFDM, 6 Mbps,) (0); Frequency: 5200 MHz

Medium parameters used: $f = 5200$ MHz; $\sigma = 5.4$ S/m; $\epsilon_r = 49.5$; $\rho = 996$ kg/m³

Phantom section: Flat Section

Measurement Standard: DASYS (IEEE/IEC/ANSI C63.19-2007)

DASY Configuration:

- Probe: EX3DV4 - SN3932; ConvF(4.69, 4.69, 4.69); Calibrated: 09/16/2013;
- Sensor-Surface: 2mm (Mechanical Surface Detection), $z = 1.0, 31.0$
- Electronics: DAE4 Sn1390; Calibrated: 09/10/2013
- Phantom: EL1 v5.0; Type: QDOVA002AA; Serial: TP:1222
- DASYS2 52.8.7(1137); SEMCAD X 14.6.10(7164)

Test Position 2/WF2190 802.11a ant1 5180MHz 10mm/Area Scan (15x20x1): Measurement grid: dx=10mm, dy=10mm

Maximum value of SAR (measured) = 0.109 W/kg

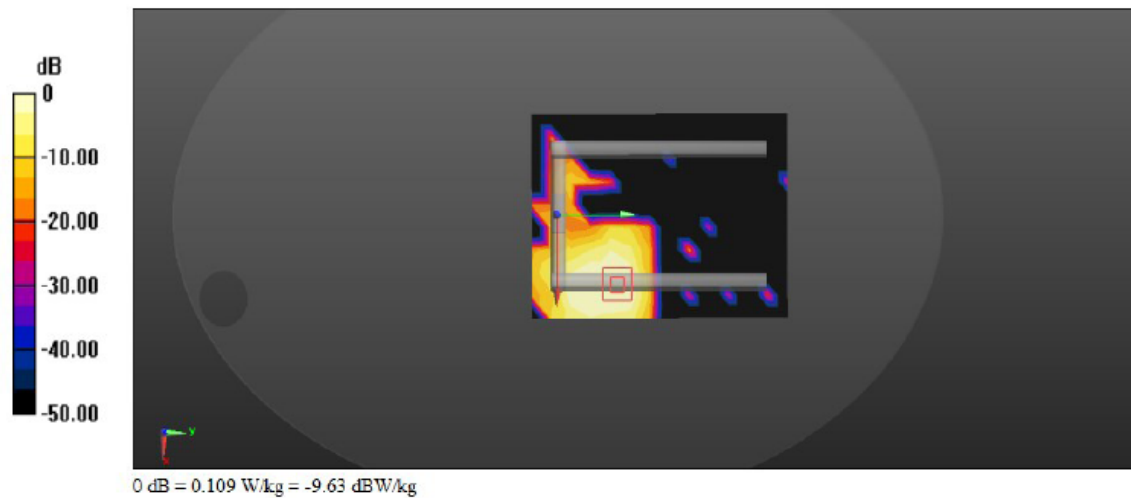
Test Position 2/WF2190 802.11a ant1 5180MHz 10mm/Zoom Scan (7x7x7)/Cube 0: Measurement grid: dx=5mm, dy=5mm, dz=5mm

Reference Value = 0.162 V/m; Power Drift = 0.04 dB

Peak SAR (extrapolated) = 0.215 W/kg

SAR(1 g) = 0.066 W/kg; SAR(10 g) = 0.026 W/kg

Maximum value of SAR (measured) = 0.127 W/kg





Test Laboratory: Neutron Engineering Inc.

WF2151 802.11a Test Position 1 band4 CH165(ant1)

DUT: Wireless Dual Band USB Adapter; Type: Sample; Serial: NA

Communication System: UID 0, IEEE 802.11a WiFi 5G(OFDM, 6 Mbps.); Frequency: 5825 MHz

Medium parameters used (interpolated): $f = 5825$ MHz; $\sigma = 6.15$ S/m; $\epsilon_r = 48.05$; $\rho = 996$ kg/m³

Phantom section: Flat Section

Measurement Standard: DASYS (IEEE/IEC/ANSI C63.19-2007)

DASY Configuration:

- Probe: EX3DV4 - SN3932; ConvF(4.19, 4.19, 4.19); Calibrated: 09/16/2013;
- Sensor-Surface: 2mm (Mechanical Surface Detection), $z = 1.0, 31.0$
- Electronics: DAE4 Sn1390; Calibrated: 09/10/2013
- Phantom: EL1 v5.0; Type: QDOVA002AA; Serial: TP:1222
- DASYS2 52.8.7(1137); SEMCAD X 14.6.10(7164)

Test Position 1/WF2151 802.11a ant1 5825MHz 5mm/Area Scan (15x13x1): Measurement grid: dx=10mm, dy=10mm

Maximum value of SAR (measured) = 0.0397 W/kg

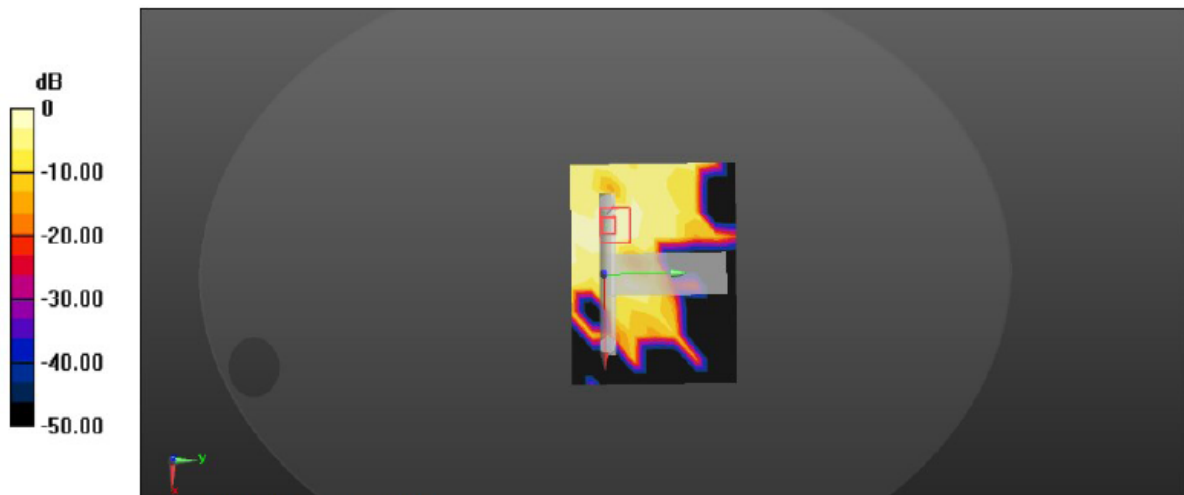
Test Position 1/WF2151 802.11a ant1 5825MHz 5mm/Zoom Scan (7x7x7)/Cube 0: Measurement grid: dx=5mm, dy=5mm, dz=5mm

Reference Value = 0.653 V/m; Power Drift = 0.06 dB

Peak SAR (extrapolated) = 0.0880 W/kg

SAR(1 g) = 0.014 W/kg; SAR(10 g) = 0.00544 W/kg

Maximum value of SAR (measured) = 0.0321 W/kg



0 dB = 0.0397 W/kg = -14.01 dBW/kg



Test Laboratory: Neutron Engineering Inc.

WF2151 802.11a Test Position 2 band4 CH165(Ant1)

DUT: Wireless Dual Band USB Adapter; Type: Sample; Serial: NA

Communication System: UID 0, IEEE 802.11a WiFi 5G(OFDMA, 6 Mbps.) ; Frequency: 5825 MHz
Medium parameters used (interpolated): $f = 5825 \text{ MHz}$, $\sigma = 6.15 \text{ S/m}$, $\epsilon_r = 48.05$, $\rho = 996 \text{ kg/m}^3$

Phantom section: Flat Section

Measurement Standard: DASYS (IEEE/IEC/ANSI C63.19-2007)

DASY Configuration:

- Probe: EX3DV4 - SN3932; ConvF(4.19, 4.19, 4.19); Calibrated: 09/16/2013;
- Sensor-Surface: 2mm (Mechanical Surface Detection), $z = 1.0, 31.0$
- Electronics: DAE4 Sn1390; Calibrated: 09/10/2013
- Phantom: ELI v5.0; Type: QDOVA002AA; Serial: TP:1222
- DASYS2 52.8.7(1137); SEMCAD X 14.6.10(7164)

Test Position 2/WF2151 802.11a ant1 5825MHz 10mm/Area Scan (15x20x1): Measurement grid: $dx=10\text{mm}$, $dy=10\text{mm}$

Maximum value of SAR (measured) = 0.125 W/kg

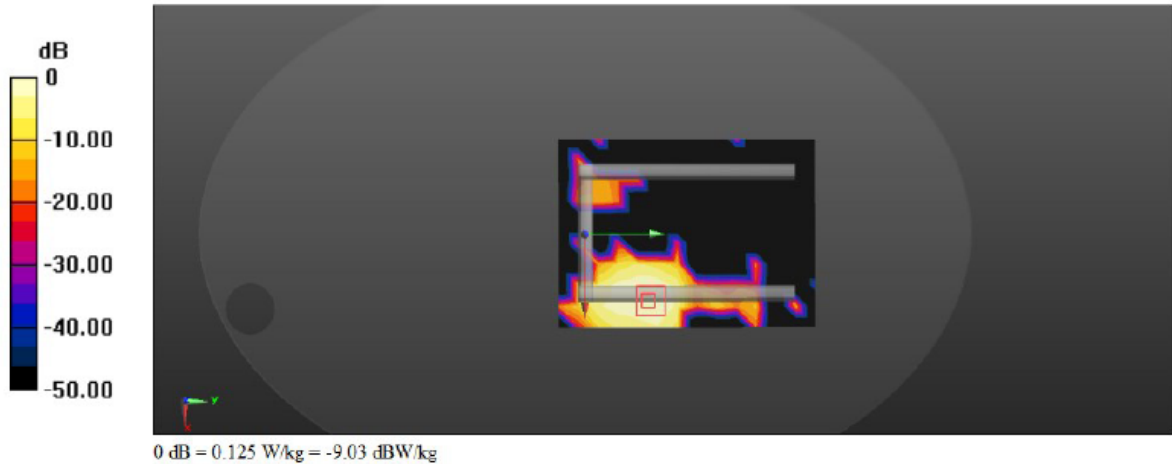
Test Position 2/WF2151 802.11a ant1 5825MHz 10mm/Zoom Scan (7x7x7)/Cube 0: Measurement grid: $dx=5\text{mm}$, $dy=5\text{mm}$, $dz=5\text{mm}$

Reference Value = 0.0157V/m; Power Drift = 0.03 dB

Peak SAR (extrapolated) = 0.307 W/kg

SAR(1 g) = 0.082 W/kg; SAR(10 g) = 0.032 W/kg

Maximum value of SAR (measured) = 0.166 W/kg





4. Probe Calibration Certificate

EX3DV4

**Calibration Laboratory of
Schmid & Partner
Engineering AG**
Zeughausstrasse 43, 8004 Zurich, Switzerland



S Schweizerischer Kalibrierdienst
S Service suisse d'étalonnage
S Servizio svizzero di taratura
S Swiss Calibration Service

Accredited by the Swiss Accreditation Service (SAS)
The Swiss Accreditation Service is one of the signatories to the EA
Multilateral Agreement for the recognition of calibration certificates

Accreditation No.: **SCS 108**

Client **Neutron Engineering (Auden)**

Certificate No: **EX3-3932_Sep13**

CALIBRATION CERTIFICATE

Object **EX3DV4 - SN:3932**

Calibration procedure(s) **QA CAL-01.v9, QA CAL-14.v4, QA CAL-23.v5, QA CAL-25.v6
Calibration procedure for dosimetric E-field probes**

Calibration date: **September 16, 2013**

This calibration certificate documents the traceability to national standards, which realize the physical units of measurements (SI).
The measurements and the uncertainties with confidence probability are given on the following pages and are part of the certificate.

All calibrations have been conducted in the closed laboratory facility: environment temperature (22 ± 3)°C and humidity < 70%.

Calibration Equipment used (M&TE critical for calibration)

Primary Standards	ID	Cal Date (Certificate No.)	Scheduled Calibration
Power meter E4419B	GB41293874	04-Apr-13 (No. 217-01733)	Apr-14
Power sensor E4412A	MY41498087	04-Apr-13 (No. 217-01733)	Apr-14
Reference 3 dB Attenuator	SN: S5054 (3c)	04-Apr-13 (No. 217-01737)	Apr-14
Reference 20 dB Attenuator	SN: S5277 (20x)	04-Apr-13 (No. 217-01735)	Apr-14
Reference 30 dB Attenuator	SN: S5129 (30b)	04-Apr-13 (No. 217-01738)	Apr-14
Reference Probe ES3DV2	SN: 3013	28-Dec-12 (No. ES3-3013_Dec12)	Dec-13
DAE4	SN: 660	4-Sep-13 (No. DAE4-660_Sep13)	Apr-14
Secondary Standards	ID	Check Date (in house)	Scheduled Check
RF generator HP 8648C	US3642UD1700	4-Aug-99 (in house check Apr-13)	In house check: Apr-15
Network Analyzer HP 8753E	US37390585	18-Oct-01 (in house check Oct-12)	In house check: Oct-13

Calibrated by:	Name Leif Klyner	Function Laboratory Technician	Signature
Approved by:	Name Katja Pokovic	Function Technical Manager	Signature

Issued: September 17, 2013

This calibration certificate shall not be reproduced except in full without written approval of the laboratory.



Calibration Laboratory of Schmid & Partner Engineering AG Zeughausstrasse 43, 8004 Zurich, Switzerland



S Schweizerischer Kalibrierdienst
Service suisse d'étalonnage
S Servizio svizzero di taratura
S Swiss Calibration Service

Accredited by the Swiss Accreditation Service (SAS)
The Swiss Accreditation Service is one of the signatories to the EA Multilateral Agreement for the recognition of calibration certificates

Accreditation No.: SCS 108

Glossary:

Table with 2 columns: Term and Definition. Terms include TSL, NORMx,y,z, ConvF, DCP, CF, A, B, C, D, Polarization phi, and Polarization theta.

Calibration is Performed According to the Following Standards:

- a) IEEE Std 1528-2003, "IEEE Recommended Practice for Determining the Peak Spatial-Averaged Specific Absorption Rate (SAR) in the Human Head from Wireless Communications Devices: Measurement Techniques", December 2003
b) IEC 62209-1, "Procedure to measure the Specific Absorption Rate (SAR) for hand-held devices used in close proximity to the ear (frequency range of 300 MHz to 3 GHz)", February 2005

Methods Applied and Interpretation of Parameters:

- NORMx,y,z: Assessed for E-field polarization theta = 0 (f <= 900 MHz in TEM-cell; f > 1800 MHz: R22 waveguide). NORMx,y,z are only intermediate values, i.e., the uncertainties of NORMx,y,z does not affect the E^2-field uncertainty inside TSL (see below ConvF).
NORM(f)x,y,z = NORMx,y,z * frequency_response (see Frequency Response Chart). This linearization is implemented in DASY4 software versions later than 4.2. The uncertainty of the frequency response is included in the stated uncertainty of ConvF.
DCPx,y,z: DCP are numerical linearization parameters assessed based on the data of power sweep with CW signal (no uncertainty required). DCP does not depend on frequency nor media.
PAR: PAR is the Peak to Average Ratio that is not calibrated but determined based on the signal characteristics
Ax,y,z; Bx,y,z; Cx,y,z; Dx,y,z; VRx,y,z; A, B, C, D are numerical linearization parameters assessed based on the data of power sweep for specific modulation signal. The parameters do not depend on frequency nor media. VR is the maximum calibration range expressed in RMS voltage across the diode.
ConvF and Boundary Effect Parameters: Assessed in flat phantom using E-field (or Temperature Transfer Standard for f <= 800 MHz) and inside waveguide using analytical field distributions based on power measurements for f > 800 MHz. The same setups are used for assessment of the parameters applied for boundary compensation (alpha, depth) of which typical uncertainty values are given. These parameters are used in DASY4 software to improve probe accuracy close to the boundary. The sensitivity in TSL corresponds to NORMx,y,z * ConvF whereby the uncertainty corresponds to that given for ConvF. A frequency dependent ConvF is used in DASY version 4.4 and higher which allows extending the validity from +/- 50 MHz to +/- 100 MHz.
Spherical isotropy (3D deviation from isotropy): in a field of low gradients realized using a flat phantom exposed by a patch antenna.
Sensor Offset: The sensor offset corresponds to the offset of virtual measurement center from the probe tip (on probe axis). No tolerance required.