

**netis WF2150 Wireless Dual Band USB
Adapter
Quick Installation Guide**

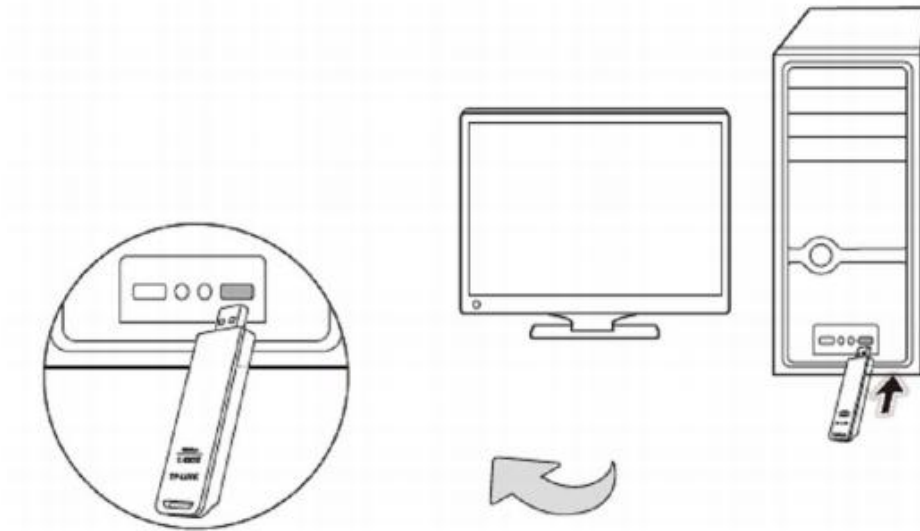
V1.0
2012-11-14

Installation

Please insert the Wireless Adapter into your computer before installing driver from netis driver CD.

1. Hardware installation

Plug the wireless adapter into an available USB interface your computer directly. Or connect the adapter and your computer with provided USB cradle.



2. Driver installation

The Setup Wizard will guide you how to install the driver for Windows8 ,Windows 7 , Windows Vista , Windows XP. And the procedure is similar, so we just take Windows 7 for example.

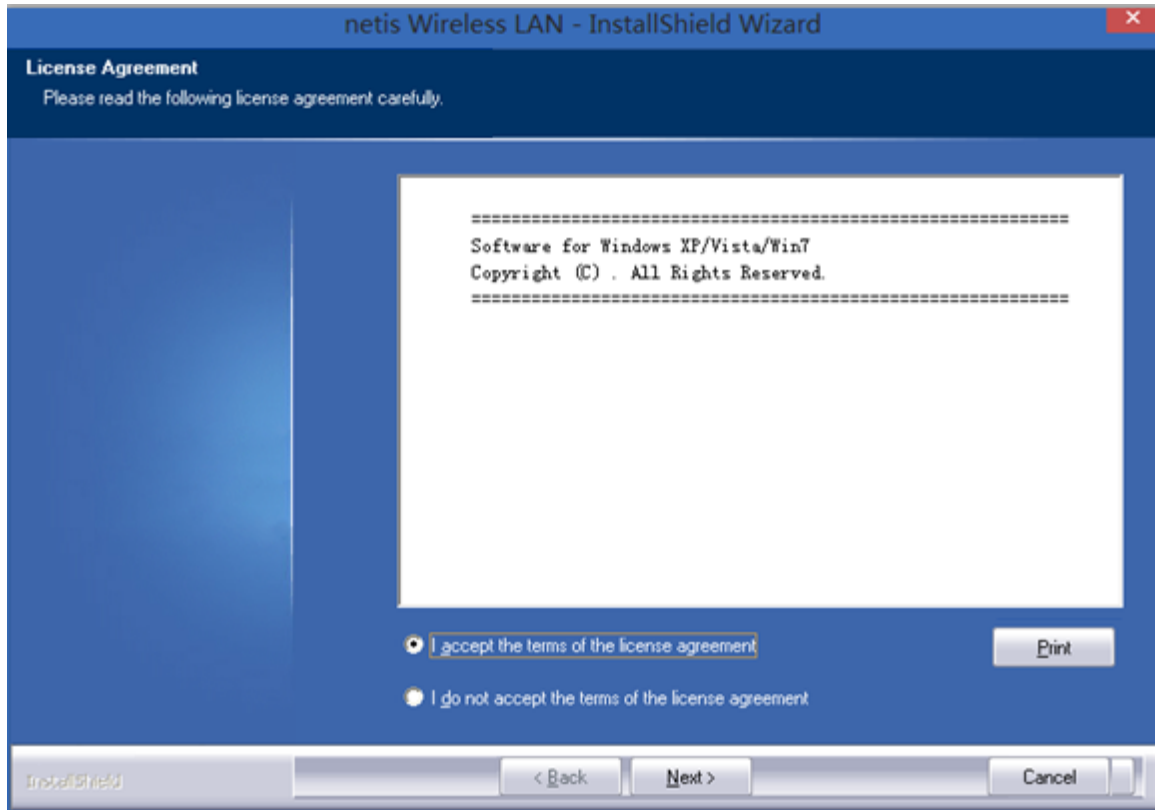
2.1

Insert netis Driver CD into your CD-ROM. And the Setup Window will appear as below:


Just simply click “Install”. Our smart driver assistant will choose the right driver for your wireless adapter.

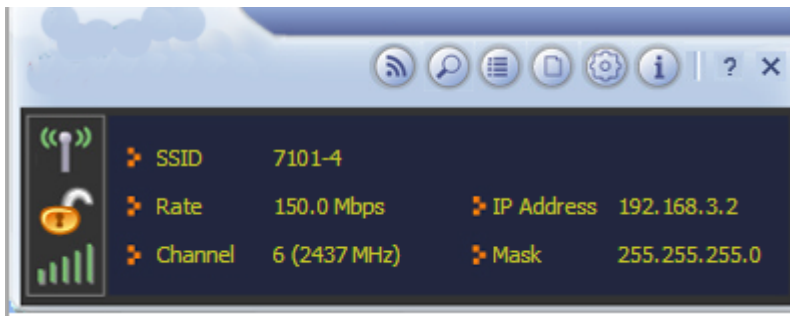




2.2 The install wizard will appear, Select “accept” follow the step by step procedures and finish the driver installation.

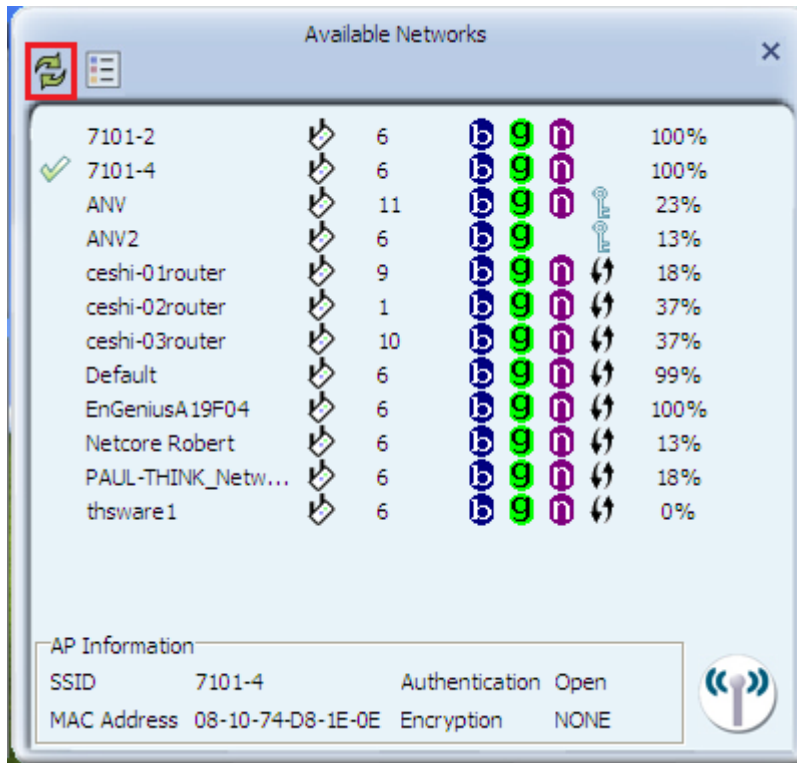


3. Connect to a Wireless network


3.1 Click  on your desktop and start the utility configuration page as show below:

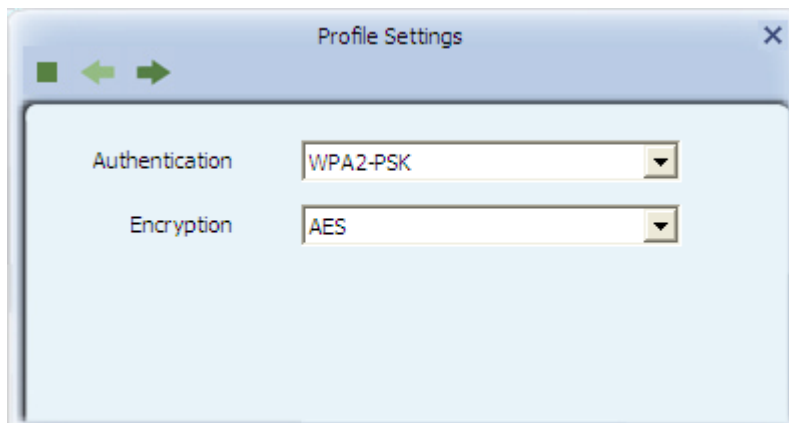


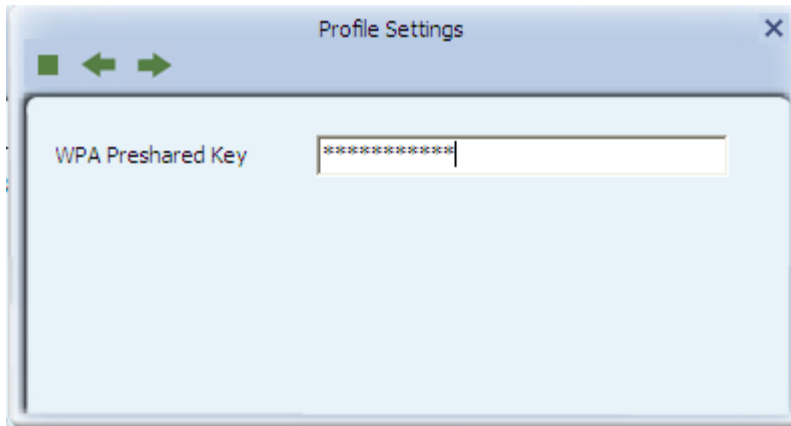
3.2 Click  to scan available wireless network. And select the wireless which you want to connect to then click 



3.3

Click  and input your wireless password





3.3 after input your wireless password. Click  to finish network configuration.

FCC Statement

This equipment has been tested and found to comply with the limits for a Class B digital device, pursuant to part 15 of the FCC rules. These limits are designed to provide reasonable protection against harmful interference in a residential installation. This equipment generates, uses and can radiate radio frequency energy and, if not installed and used in accordance with the instructions, may cause harmful interference to radio communications. However, there is no guarantee that interference will not occur in a particular installation. If this equipment does cause harmful interference to radio or television reception, which can be determined by turning the equipment off and on, the user is encouraged to try to correct the interference by one or more of the following measures:

- Reorient or relocate the receiving antenna.
- Increase the separation between the equipment and receiver.
- Connect the equipment into an outlet on a circuit different from that to which the receiver is connected.
- Consult the dealer or an experienced radio/TV technician for help.

To assure continued compliance, any changes or modifications not expressly approved by the party responsible for compliance could void the user's authority to operate this equipment. (Example- use only shielded interface cables when connecting to computer or peripheral devices)

FCC Radiation Exposure Statement

This equipment complies with FCC RF radiation exposure limits set forth for an uncontrolled environment. This transmitter must not be co-located or operating in conjunction with any other antenna or transmitter.

This equipment complies with Part 15 of the FCC Rules. Operation is subject to the following two conditions:

- (1) This device may not cause harmful interference, and
- (2) This device must accept any interference received, including interference that may cause undesired operation.

The operation frequency of the device in the 5150-5250 MHz band is for indoor use only.

Caution!

The manufacturer is not responsible for any radio or TV interference caused by unauthorized modifications to this equipment. Such modifications could void the user authority to operate the equipment