



WF2123 netis 300Mbps Wireless-N USB Adapter Quick Installation Guide

1. Check Your Package Contents

The following items should be found in your package:

- > Wireless-N USB Adapter
- > Quick Installation Guide
- > CD-ROM

Make sure that the package contains above items. If any of the above items is missing or damaged, please contact the store you bought this product from.

2. Before Your Begin

Minimum Requirements:

- > Available USB 1.1 or USB 2.0 port
- > 300 MHz processor and 32 MB of memory
- > CD-ROM drive
- > An 802.11b/g/n access point (for Infrastructure Mode) or another 802.11b/g/n wireless adapter (for Ad-Hoc; Peer-to-Peer networking mode.)
- > Microsoft® Windows® 7, Vista™, XP, 2000 SP4

3. Insert the CD

Turn on the computer and insert the included CD in the CD-ROM drive. The install screen will appear, as figure 1. If not, click the Start button and choose Run and enter D:\install.exe (if 'D' is your CD-ROM drive)

>Click **"Install Driver"**, choose your product model, click **"Install"** and follow the software instructions. The following is the step-by-step instructions in **Windows XP**. The steps and screens are similar for the other Windows operating systems.



Figure 1

>**Step 1** Select language and then click **"Next"**, if no such option, go to **Step 2**

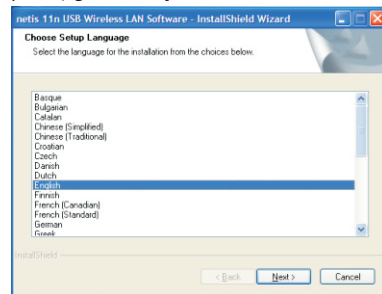


Figure 2

>**Step 2** Click **"Next"**

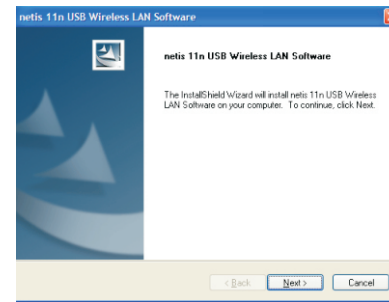


Figure 3

>**Step 3** Select setup type and then click **"Next"**

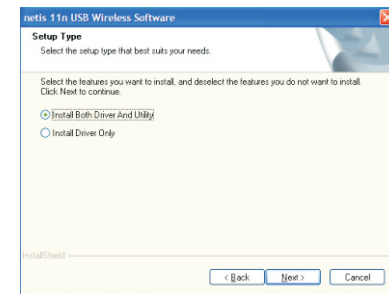


Figure 4

>Driver is being installed, please wait...



>**Step 4** After installation is complete, if you are asked to restart you may do so immediately, or you may choose to do so later, after closing and saving work in other programs. If no such option, go to **Step 5**



Figure 6

>**Step 5** Click **"Finish"**

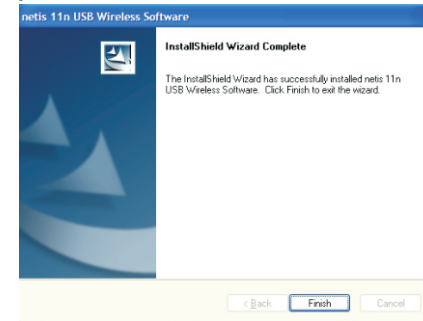


Figure 7

4. Insert the Wireless-N USB Adapter

Plug the Wireless-N USB Adapter into an available USB port on your computer, and the Found New Hardware Wizard (windows XP) screen will appear:

>Select Install the software automatically (Recommended) and then click "Next"

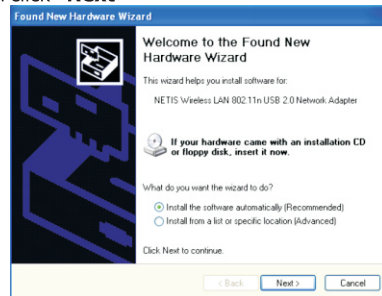


Figure 8

>Click "Finish" to finish the hardware installation

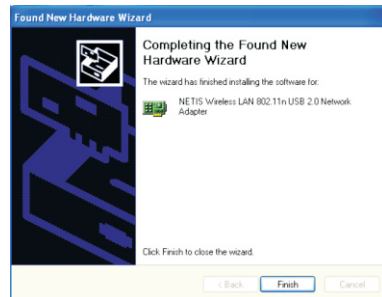


Figure 9

6

5. Connecting to a wireless network

You can double-click the icon on your desktop to run it. Another way to start the utility is to click **Start>Programs>netis 11n USB Wireless LAN Utility>netis 11n USB Wireless LAN Utility**.

Note: If you are using Windows XP, you can use either the Windows Zero Configuration Utility or the netis software, but netis Wireless LAN Utility is recommended.

>Double click the icon as **Figure 10** on the desk-top,



Figure 10

You can use the following methods to connect to a wireless network.

Method 1(This method is only suitable for installed unity of users, see **Step 3**):

>Click on the **Available Network** tab and available wireless networks will be displayed. You can then double click on the network that you wish to connect to.

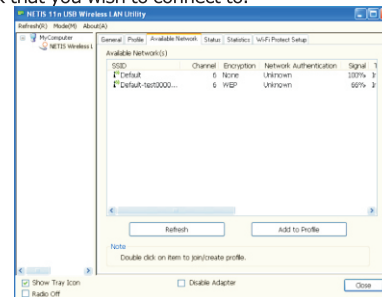


Figure 11

7

>If the network you are connecting to is encrypted, you will need to enter and confirm the network key/ password, then click "OK".

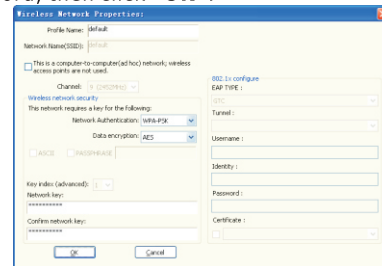


Figure 12

Method 2:

You can follow steps below to connect to wireless network if you only install Drive without Unity in **Step 3**.

Double click "My Network Places", then click "View network connections" and right click "Wireless network connections" to select "Available wireless network connections", and available wireless networks will be displayed, you can then double click on the network that you wish to connect to.

8

FCC Statement

This equipment has been tested and found to comply with the limits for a Class B digital device, pursuant to part 15 of the FCC rules. These limits are designed to provide reasonable protection against harmful interference in a residential installation. This equipment generates, uses and can radiate radio frequency energy and, if not installed and used in accordance with the instructions, may cause harmful interference to radio communications. However, there is no guarantee that interference will not occur in a particular installation. If this equipment does cause harmful interference to radio or television reception, which can be determined by turning the equipment off and on, the user is encouraged to try to correct the interference by one or more of the following measures:

- Reorient or relocate the receiving antenna.
- Increase the separation between the equipment and receiver.
- Connect the equipment into an outlet on a circuit different from that to which the receiver is connected.
- Consult the dealer or an experienced radio/TV technician for help. To assure continued compliance, any changes or modifications not expressly approved by the party responsible for compliance could void the user's authority to operate this equipment. (Example-use only shielded interface cables when connecting to computer or peripheral devices).

FCC Radiation Exposure Statement

This equipment complies with FCC RF radiation exposure limits set forth for an uncontrolled environment. This transmitter must not be co-located or operating in conjunction with any other antenna or transmitter.

9

This equipment complies with Part 15 of the FCCRF Rules. Operation is subject to the following two conditions:
1) This device may not cause interference and
2) This device must accept any interference, including interference that may cause undesired operation of the device.

Caution!

The manufacturer is not responsible for any radio or TV interference caused by unauthorized modifications to this equipment. Such modifications could void the user authority to operate the equipment.

USA/Canada Technical Support:

Phone (toll free in USA & Canada):

1-866-71-network or 1-866-716-3896

Email: usa_support@netis-systems.com

for North America only



netis SYSTEMS CO.,LTD.
[Http://www.netis-systems.com](http://www.netis-systems.com)
MADE IN CHINA

PKUM01024