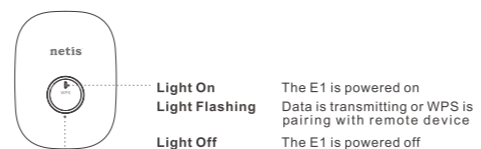


1.Package Contents



2.Hardware Information



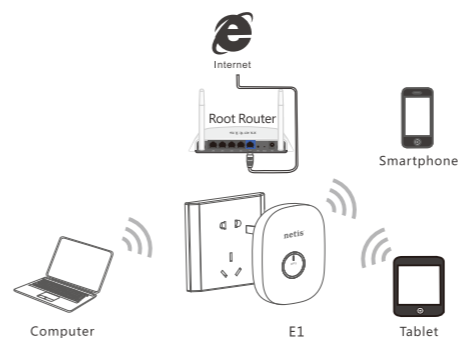
**WPS/Default Button**  
**WPS:** Press the button for 1~2 seconds  
**Default:** Press and hold the button until the light is flashing, the extender will be restored to factory defaults

**Note:** Different power plug is provided for different region. Here we just take US version for example.

3. Extender Setup

You can setup E1 in two ways: pressing WPS Button or via Web Management Page.

3.1 Hardware Connection



- 1) Please make sure that your root router can connect to the Internet successfully.
- 2) Plug E1 to a standard electrical socket.

**Note:** Please place the E1 closely to your root router when you setup extender. Also after you are successfully connected, you can move your E1 to other areas.

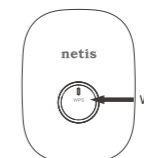
3.1.1 Extender setup via WPS Button (Particularly recommended)

**Note:** Please make sure that the root router is with WPS Button, and the function is enabled. If you cannot find WPS function, please turn to "3.1.2 Extender setup via Web Management Page".

**Step 1:** Press the WPS Button on your root router.



**Step 2:** Press WPS Button on E1 for 1~2 seconds.



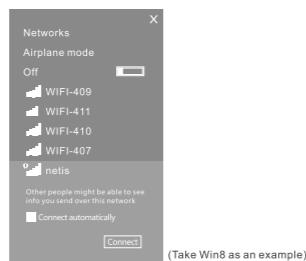
**Step 3:** You are successfully connected!



**Note:** Now you can take E1 to the hard-to-reach area like your basements or upstairs bedrooms. Simply plug E1 into a wall socket within the current Wi-Fi range of your root router, and instantly extend your home network anywhere!

3.1.2 Extender setup via Web Management Page

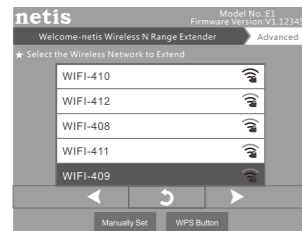
**Step 1:** Search and connect to the E1 network "netis" with your computer or mobile terminal device.



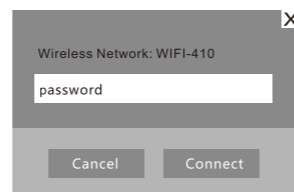
**Step 2:** Open your browser and type "http://netis.cc" in the address field to visit E1's web management page.



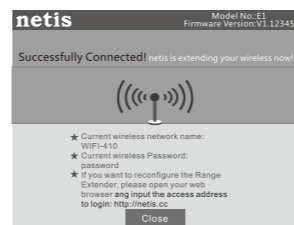
**Step 3:** Select your network of your root router ( For example: WIFI-410 ).



**Step 4:** Type in wireless password of the root router and click "Connect" to setup your Wi-Fi Extender network.



**Step 5:** You are successfully connected!



**Note:** Now you can take E1 to the hard-to-reach area like your basements or upstairs bedrooms. Simply plug E1 into a wall socket within the current Wi-Fi range of your root router, and instantly extend your home network anywhere!

- Tip 1:** Default Login Address: <http://netis.cc>  
 Default SSID: netis (Once the extender setup is finished, the SSID will change to the same one as the root router)  
**Tip 2:** You can click on "Advanced" button on the top for further settings.

4.Troubleshooting

**Q** How do I restore my Extender configuration to its default settings?

**A** With the Extender powered on, press and hold the button until the light is flashing, the Extender configuration will be restored to factory defaults.

**Q** What can I do if I failed to extend the wireless range by "WPS Button"?

- 1) Check to verify the hardware connections are correct. Please refer to the "3.1.1 Extender setup via WPS Button" > "3.1 Hardware Connection".
- 2) Make sure that the WPS feature is enabled on your root router.
- 3) Refer to "3.1.2 Extender setup via Web Management Page" to configuration via Web Management Page.

Appendix: FCC Statement

This equipment has been tested and found to comply with the limits for a Class B digital device, pursuant to part 15 of the FCC Rules. These limits are designed to provide reasonable protection against harmful interference in a residential installation. This equipment generates uses and can radiate radio frequency energy and, if not installed and used in accordance with the instructions, may cause harmful interference to radio communications. However, there is no guarantee that interference will not occur in a particular installation. If this equipment does cause harmful interference to radio or television reception, which can be determined by turning the equipment off and on, the user is encouraged to try to correct the interference by one or more of the following measures:  
 —Reorient or relocate the receiving antenna.  
 —Increase the separation between the equipment and receiver.  
 —Connect the equipment into an outlet on a circuit different from that to which the receiver is connected.  
 —Consult the dealer or an experienced radio/TV technician for help.

**FCC Radiation Exposure Statement**  
 This device complies with FCC radiation exposure limits set forth for an uncontrolled environment and it also complies with Part 15 of the FCC RF Rules. This transmitter must not be co-located or operating in conjunction with any other antenna or transmitter.  
 This equipment should be installed and operated with a minimum distance of 20 centimeters between the radiator and your body.

This device complies with Part 15 of the FCC Rules. Operation is subject to the following two conditions:  
 (1) this device may not cause harmful interference, and  
 (2) this device must accept any interference received, including interference that may cause undesired operation.

**Caution!**  
 Any changes or modifications not expressly approved by the party responsible for compliance could void the user's authority to operate the equipment.

**Technical Support:**  
 USA/ Canada  
 Toll Free: +1 866 71 network (+1 866 716 3896)  
 E-mail: [usa\\_support@netis-systems.com](mailto:usa_support@netis-systems.com)

**Other Regions:**  
 E-mail: [support@netis-systems.com](mailto:support@netis-systems.com)

NETIS SYSTEMS CO., LTD.  
[www.netis-systems.com](http://www.netis-systems.com)  
 MADE IN CHINA