

---

# FCC Part 90 Test Report

---

Report No.: AGC00589141202FE09

**FCC ID** : T4KAT598U  
**PRODUCT DESIGNATION** : MOBILE RADIO  
**BRAND NAME** : N/A  
**MODEL NAME** : AT598, AT599, AT999, AT5189, 591, 491, 598, 589  
AT599U, AT999U, 591U, 491U, 589U, AT598U, AT5189U  
**CLIENT** : Qixiang Electron Science & Technology Co., Ltd.  
**DATE OF ISSUE** : Dec.24, 2014  
**STANDARD(S)** : FCC Part 90 Rules  
**REPORT VERSION** : V 1.0

Attestation of *Global Compliance (Shenzhen) Co., Ltd*

**CAUTION:** This report shall not be reproduced except in full without the written permission of the test laboratory and shall not be quoted out of context.

### Report Revise Record

Report Version	Revise Time	Issued Date	Valid Version	Notes
V1.0	/	Dec.24, 2014	Valid	Original Report

**VERIFICATION OF COMPLIANCE**

<b>Applicant:</b>	Qixiang Electron Science & Technology Co., Ltd.
	Qixiang Building, Tangxi Industrial Zone, Luojiang District, Quanzhou, Fujian, China
<b>Manufacturer:</b>	Qixiang Electron Science & Technology Co., Ltd.
	Qixiang Building, Tangxi Industrial Zone, Luojiang District, Quanzhou, Fujian, China
<b>Product Designation:</b>	MOBILE RADIO
<b>Brand Name:</b>	N/A
<b>Test Model</b>	AT598
<b>Series Model</b>	AT599, AT999, AT5189, 591, 491, 598, 589, AT599U, AT999U, 591U, 491U, 589U, AT598U, AT5189U
<b>Difference description</b>	All the same except for the model name.
<b>Date of Test:</b>	Dec.17, 2014 to Dec.23, 2014

**WE HEREBY CERTIFY THAT:**

The above equipment was tested by Attestation of Global Compliance (Shenzhen) Co., Ltd. The data evaluation, test procedures, and equipment configurations shown in this report were made in accordance with the procedures given in ANSI C 63.4:2009. The sample tested as described in this report is in compliance with the FCC Rules Part 90 requirements

The test results of this report relate only to the tested sample identified in this report.

Tested by Freddie Duan  
Freddie Duan Dec.24, 2014

Checked By Kidd Yang  
Kidd Yang Dec.24, 2014

Authorized By Solger Zhang  
Solger Zhang Dec.24, 2014

## TABLE OF CONTENTS

<b>1. GENERAL INFORMATION.....</b>	<b>6</b>
1.1 PRODUCT DESCRIPTION .....	6
1.2 RELATED SUBMITTAL(S) / GRANT (S) .....	7
1.3 TEST METHODOLOGY .....	7
1.4 TEST FACILITY .....	7
1.5 SPECIAL ACCESSORIES .....	7
1.6 EQUIPMENT MODIFICATIONS.....	7
<b>2. SYSTEM TEST CONFIGURATION .....</b>	<b>8</b>
2.1 EUT CONFIGURATION.....	8
2.2 EUT EXERCISE .....	8
2.3 GENERAL TECHNICAL REQUIREMENTS .....	8
2.4 CONFIGURATION OF TESTED SYSTEM.....	9
2.5. SUMMARY OF TEST RESULTS .....	9
<b>3. IDENTIFICATION OF THE RESPONSIBLE TESTING LOCATION .....</b>	<b>10</b>
<b>4. DESCRIPTION OF TEST MODES.....</b>	<b>11</b>
<b>5. FREQUENCY TOLERANCE.....</b>	<b>12</b>
5.1 PROVISIONS APPLICABLE .....	12
5.2 MEASUREMENT PROCEDURE .....	12
5.3 TEST SETUP BLOCK DIAGRAM .....	13
5.4 TEST RESULT .....	14
<b>6. EMISSION BANDWIDTH.....</b>	<b>17</b>
6.1 PROVISIONS APPLICABLE .....	17
6.2 MEASUREMENT PROCEDURE .....	17
6.3 TEST SETUP BLOCK DIAGRAM.....	17
6.4 MEASUREMENT RESULT .....	18
<b>7. UNWANTED RADIATION .....</b>	<b>19</b>
7.1 PROVISIONS APPLICABLE .....	19
7.2 MEASUREMENT PROCEDURE .....	19
7.3 TEST SETUP BLOCK DIAGRAM.....	19
7.4 MEASUREMENT RESULTS: .....	22
<b>8. MODULATION CHARACTERISTICS .....</b>	<b>26</b>
8.1 PROVISIONS APPLICABLE .....	26
8.2 MEASUREMENT METHOD.....	26
8.3 MEASUREMENT RESULT .....	27

**9. MAXIMUM TRANSMITTER POWER ..... 30**

9.1 PROVISIONS APPLICABLE ..... 30

9.2 TEST PROCEDURE ..... 30

9.3 TEST CONFIGURATION ..... 30

9.4 TEST RESULT ..... 32

10.5 CONDUCT SPURIOUS PLOT ..... 33

**10. TRANSMITTER FREQUENCY BEHAVIOR..... 34**

10.1 PROVISIONS APPLICABLE ..... 34

10.2 TEST METHOD..... 34

10.3 DESCRIBE LIMIT LINE OF TRANSMITTER FREQUENCY BEHAVIOR ..... 34

10.4 MEASURE RESULT..... 36

**11. RADIATED EMISSION ON RECEIVING MODE ..... 37**

11.1 PROVISIONS APPLICABLE ..... 37

11.2 TEST METHOD ..... 37

11.3 MEASURE RESULT (MEASURED AT 3M USING FCC PART15 B LIMITS)..... 38

**12. AUDIO LOW PASS FILTER RESPONSE ..... 42**

12.1 LIMITS ..... 42

12.2. METHOD OF MEASUREMENTS..... 42

12.3 TEST DATA..... 43

**APPENDIX I: PHOTOGRAPHS OF SETUP ..... 45**

**APPENDIX II: EXTERNAL VIEW OF EUT ..... 46**

## 1. GENERAL INFORMATION

### 1.1 PRODUCT DESCRIPTION

The EUT is a MOBILE RADIO designed for voice communication. It is designed by way of utilizing the FM modulation achieves the system operating.

A major technical description of EUT is described as following:

Communication Type	Voice / Tone only
Modulation	FM
Emission Type	11K $\Phi$ F3E
Emission Bandwidth	10.21KHz
Peak Frequency Deviation	1.85KHz
Audio Frequency Response	10.88dB
Maximum Transmitter Power	46.89dBm
Output power Modification	50W (It was fixed by the manufacturer, any individual can't arbitrarily change it.)
Antenna Designation	Detachable
Antenna type	QCA-01
Antenna gain	0dBi
Antenna connection cable length	2m
Power Supply	DC 13.8V
Limiting Voltage	DC 11.73V-DC 15.87V
Operation Frequency Range and Channel	Frequency Range: 400MHz to 490MHz Channel Separation: 12.5KHz
	Bottom Channel: 400.025MHz Centre Channel: 445.000MHz Top Channel: 489.975MHz
Frequency Tolerance	0.670ppm

## **1.2 RELATED SUBMITTAL(S) / GRANT (S)**

This submittal(s) (test report) is intended for **FCC ID: T4KAT598U**, filing to comply with the FCC Part 90 requirements and the.

## **1.3 TEST METHODOLOGY**

The radiated emission testing was performed according to the procedures of ANSI C 63.4: 2009; TIA/EIA 603 and FCC CFR 47 Rules of 2.1046, 2.1047, 2.1049, 2.1051, 2.1053, 2.1055, 2.1057.

## **1.4 TEST FACILITY**

The test site used to collect the radiated data is located on the address of Attestation of Global Compliance (Shenzhen) Co., Ltd. The test site is constructed and calibrated to meet the FCC requirements in documents ANSI C63.4: 2003 and IC requirements in documents RS212.

FCC register No.: 259865

## **1.5 SPECIAL ACCESSORIES**

Not available for this EUT intended for grant.

## **1.6 EQUIPMENT MODIFICATIONS**

Not available for this EUT intended for grant.

## **2. SYSTEM TEST CONFIGURATION**

### **2.1 EUT CONFIGURATION**

The EUT configuration for testing is installed on RF field strength measurement to meet the Commission's requirement and operating in a manner which intends to maximize its emission characteristics in a continuous normal application.

### **2.2 EUT EXERCISE**

The Transmitter was operated in the normal operating mode. The TX frequency was fixed which was for the purpose of the measurements.

### **2.3 GENERAL TECHNICAL REQUIREMENTS**

For FCC Part 90 requirements:

- (1). Section 90.205: Maximum ERP is dependent upon the station's antenna HAAT and required service area
- (2). Section 90.207: Modulation Characteristic
- (3). Section 90.209: Occupied Bandwidth
- (4). Section 90.210: Emission Mask
- (5). Section 90.213: Frequency Tolerance
- (6). Section 90.214: Transient Frequency Behavior



**2.4 CONFIGURATION OF TESTED SYSTEM**

Fig. 2-1 Configuration of Tested System



Table 2-1 Equipment Used in Tested System

Item	Equipment	Model No.	Identifier	Note
1	MOBILE RADIO	AT598	FCC ID: T4KAT598U	EUT

**2.5. SUMMARY OF TEST RESULTS**

FCC Rules	Description Of Test	Result
§90.205	Maximum Transmitter Power	Compliant
§90.207	Modulation Characteristic	Compliant
§90.209	Occupied Bandwidth	Compliant
§90.210	Emission Mask	Compliant
§90.213	Frequency Tolerance	Compliant
§90.214	Transient Frequency Behavior	Compliant
§90.242	AUDIO LOW PASS FILTER RESPONSE	Compliant

**3. IDENTIFICATION OF THE RESPONSIBLE TESTING LOCATION**

<b>Site</b>	Attestation of Global Compliance (Shenzhen) Co., Ltd
<b>Location 1</b>	2/F., Building 2, No.1-No.4, Chaxi Sanwei Technical Industrial Park, Gushu, Xixiang, Bao'an District, Shenzhen, Guangdong, China
<b>Location 2</b>	B112-B113, Building 12, Baoan Building Materials Center, No.1 of Xixiang Inner Ring Road, Baoan District, Shenzhen, Guangdong, P.R.China

**LIST OF EQUIPMENTS USED**

<b>NAME OF EQUIPMENT</b>	<b>MANUFACTURER</b>	<b>MODEL</b>	<b>SERIAL NUMBER</b>	<b>Cal. Date</b>	<b>Cal. Due</b>
TEST RECEIVER	R&S	ESCI	N/A	07/25/2014	07/24/2015
LISN	R&S	ESH3-Z5	N/A	09/05/2014	09/04/2015
CLIMATE CHAMBER	EXPERY	TN-400	N/A	07/25/2014	07/24/2015
ATTENUATOR	WEINSCHTEL CORP	58-30-33	ML030	07/25/2014	07/24/2015
DC POWER SUPPLY	ZHAOXIN	RXN-605D	N/A	07/25/2014	07/24/2015
SPECTRUM ANALYZER	AGILENT	N9010A	MY53470504	10/21/2014	10/20/2015
MODULATION ANALYZER	HP	8920B	3104A03367	07/16/2014	07/15/2015
HEADPHONE LINE	AGC	N/A	N/A	N/A	N/A
HORN ANT	ETS	3117	00034609	08/17/2014	08/16/2015
BROADBAND ANT	SCHWARZBECK	VULB9168	D69250	08/17/2014	08/16/2015
Broadband Preamplifier	Schwarzbeck	BBV 9718	9718-62	07/30/2014	07/29/2015
Multi-Device Controller	EMCO	2090	N/A	07/30/2014	07/29/2015
HORN ANTENNA	A.H. SYSTEMS INC.	SAS-574	N/A	07/16/2014	07/15/2015
Biconilog Antenna	EMCO	3142C	N/A	08/17/2014	08/16/2015
SIGNAL GENERATOR	AGILENT	E4421B	122501288	07/25/2014	07/24/2015
SIGNAL GENERATOR	R&S	SMT03	A0304261	07/25/2014	07/24/2015
BICONILOG ANTENNA	EMCO	3142C	N/A	08/17/2014	08/16/2015
RF CABLE	SUIRONG	9KHZ-30MHZ	N/A	07/16/2014	07/15/2015
RF CABLE	SUIRONG	30MHZ-18GHZ	N/A	07/16/2014	07/15/2015

NOTE: 8920B can generate audio modulation frequency.

#### 4. DESCRIPTION OF TEST MODES

##### RF TEST MODES

The EUT (MOBILE RADIO ) has been tested under normal operating condition. (The top channel, the middle channel and the bottom channel) are chosen for testing at each channel separation.

No.	TEST MODES	CHANNEL SEPARATION
1	Low Channel	12.5KHz
2	Middle Channel	12.5KHz
3	High Channel	12.5KHz

##### EMC TEST MODES

No.	TEST MODES
1	Standby Mode

**Note:** Only the result of the worst case was recorded in the report.

## **6. FREQUENCY TOLERANCE**

### **6.1 PROVISIONS APPLICABLE**

- a). According to FCC Part 2 Section 2.1055(a)(1), the frequency stability shall be measured with variation of ambient temperature from  $-30^{\circ}\text{C}$  to  $+50^{\circ}\text{C}$  centigrade.
- b). According to FCC Part 2 Section 2.1055(d)(2), for battery powered equipment, the frequency stability shall be measured with reducing primary supply voltage to the battery operating end point, which is specified by the manufacturer.
- c). According to FCC Part 90 Section 90.213, the frequency tolerance must be maintained within 0.00025% for 12.5 KHz channel separation.
- d). According to RSS-119 Section 119.5.3, the frequency tolerance must be maintained within 0.00025% for 12.5 KHz channel separation and 0.0005% for 25KHz channel separation.

### **6.2 MEASUREMENT PROCEDURE**

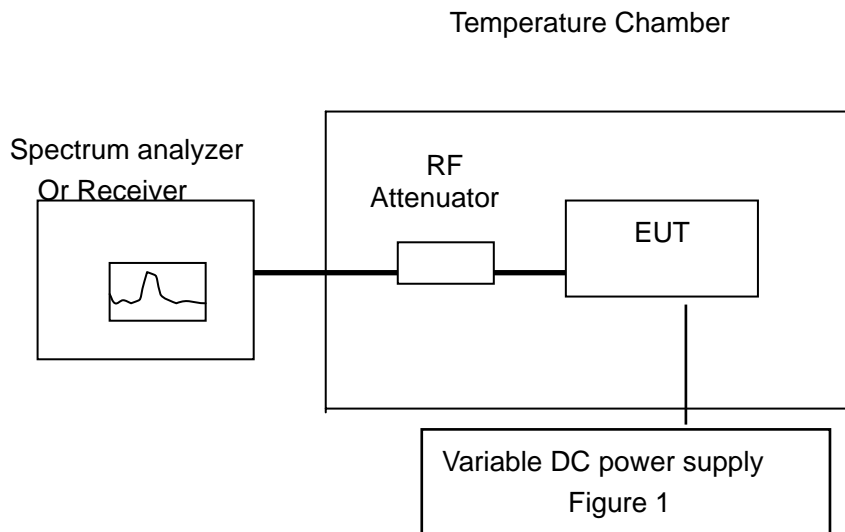
#### **6.2.1 Frequency stability versus environmental temperature**

1. Setup the configuration per figure 1 for frequencies measurement inside an environment chamber, Install new battery in the EUT.
2. Turn on EUT and set SA center frequency to the EUT radiated frequency. Set SA Resolution Bandwidth to 1KHz and Video Resolution Bandwidth to 1KHz and Frequency Span to 50KHz. Record this frequency as reference frequency.
3. Set the temperature of chamber to  $50^{\circ}\text{C}$ . Allow sufficient time (approximately 30 min) for the temperature of the chamber to stabilize. While maintaining a constant temperature inside the chamber, turn the EUT on and measure the EUT operating frequency.
4. Repeat step 2 with a  $10^{\circ}\text{C}$  decreased per stage until the lowest temperature  $-30^{\circ}\text{C}$  is measured, record all measured frequencies on each temperature step.

#### **6.2.2 Frequency stability versus input voltage**

1. Setup the configuration per figure 1 for frequencies measured at temperature if it is within  $15^{\circ}\text{C}$  to  $25^{\circ}\text{C}$ . Otherwise, an environment chamber set for a temperature of  $20^{\circ}\text{C}$  shall be used. The EUT shall be powered by DC 13.8V.
2. Set SA center frequency to the EUT radiated frequency. Set SA Resolution Bandwidth to 1 KHz and Video Resolution Bandwidth to 1KHz. Record this frequency as reference frequency.
3. Supply the EUT primary voltage at the operating end point which is specified by manufacturer and record the frequency.

### 6.3 TEST SETUP BLOCK DIAGRAM



**6.4 TEST RESULT**

Frequency stability versus input voltage (Supply nominal voltage is 13.8V)

**Bottom Channel @ 12.5KHz Channel Separation**

Reference Frequency:	400.025 MHz	Limit:	1.5ppm
Environment Temperature	Power Supply	Frequency Deviation	
(°C)	(V)	(MHz)	ppm
50	DC 13.8 V	400.025265	0.662
40	DC 13.8 V	400.025251	0.627
30	DC 13.8 V	400.025253	0.632
20	DC 13.8 V	400.025264	0.660
10	DC 13.8 V	400.025252	0.630
0	DC 13.8 V	400.025241	0.602
-10	DC 13.8 V	400.025247	0.617
-20	DC 13.8 V	400.025244	0.610
-30	DC 13.8 V	400.025247	0.617

**Middle Channel @ 12.5KHz Channel Separation**

Reference Frequency:	445.000 MHz	Limit:	1.5ppm
Environment Temperature	Power Supply	Frequency Deviation	
(°C)	(V)	(MHz)	ppm
50	DC 13.8 V	445.000245	0.551
40	DC 13.8 V	445.000272	0.611
30	DC 13.8 V	445.000261	0.587
20	DC 13.8 V	445.000269	0.604
10	DC 13.8 V	445.000257	0.578
0	DC 13.8 V	445.000261	0.587
-10	DC 13.8 V	445.000259	0.582
-20	DC 13.8 V	445.000267	0.600
-30	DC 13.8 V	445.000275	0.618

**Top Channel @ 12.5KHz Channel Separation**

Reference Frequency:	489.975 MHz	Limit:	1.5ppm
Environment Temperature	Power Supply	Frequency Deviation	
(°C)	(V)	(MHz)	ppm
50	DC 13.8 V	489.975315	0.643
40	DC 13.8 V	489.975322	0.657
30	DC 13.8 V	489.975307	0.627
20	DC 13.8 V	489.975312	0.637
10	DC 13.8 V	489.975324	0.661
0	DC 13.8 V	489.975322	0.657
-10	DC 13.8 V	489.975301	0.614
-20	DC 13.8 V	489.975343	0.700
-30	DC 13.8 V	489.975331	0.676

(2) Frequency stability versus input voltage (Battery Limiting voltage is 11.73V)

**Bottom Channel @ 12.5KHz Channel Separation**

Reference Frequency:	400.025 MHz	Limit:	1.5ppm
Environment Temperature	Power Supply	Frequency Deviation	
(°C)	(V)	(MHz)	ppm
50	DC 11.73 V	400.025262	0.655
40	DC 11.73 V	400.025251	0.627
30	DC 11.73 V	400.025232	0.580
20	DC 11.73 V	400.025221	0.552
10	DC 11.73 V	400.025264	0.660
0	DC 11.73 V	400.025242	0.605
-10	DC 11.73 V	400.025255	0.637
-20	DC 11.73 V	400.025223	0.557
-30	DC 11.73 V	400.025214	0.535

**Middle Channel @ 12.5KHz Channel Separation**

Reference Frequency:	445.000 MHz	Limit:	1.5ppm
Environment Temperature	Power Supply	Frequency Deviation	
(°C)	(V)	(MHz)	ppm
50	DC 11.73 V	445.000285	0.640
40	DC 11.73 V	445.000271	0.609
30	DC 11.73 V	445.000264	0.593
20	DC 11.73 V	445.000243	0.546
10	DC 11.73 V	445.000251	0.564
0	DC 11.73 V	445.000265	0.596
-10	DC 11.73 V	445.000236	0.530
-20	DC 11.73 V	445.000223	0.501
-30	DC 11.73 V	445.000237	0.533

**Top Channel @ 12.5KHz Channel Separation**

Reference Frequency:	489.975 MHz	Limit:	1.5ppm
Environment Temperature	Power Supply	Frequency Deviation	
(°C)	(V)	(MHz)	ppm
50	DC 11.73 V	489.975295	0.602
40	DC 11.73 V	489.975281	0.573
30	DC 11.73 V	489.975273	0.557
20	DC 11.73 V	489.975247	0.504
10	DC 11.73 V	489.975234	0.478
0	DC 11.73 V	489.975225	0.459
-10	DC 11.73 V	489.975226	0.461
-20	DC 11.73 V	489.975237	0.484
-30	DC 11.73 V	489.975259	0.529

(3) Frequency stability versus input voltage (Battery Fully Charged voltage is 15.87V)

**Bottom Channel @ 12.5KHz Channel Separation**

Reference Frequency:	400.025 MHz	Limit:	1.5ppm
Environment Temperature	Power Supply	Frequency Deviation	
(°C)	(V)	(MHz)	ppm
50	DC 15.87 V	400.025253	0.632
40	DC 15.87 V	400.025264	0.660
30	DC 15.87 V	400.025245	0.612
20	DC 15.87 V	400.025237	0.592
10	DC 15.87 V	400.025242	0.605
0	DC 15.87 V	400.025234	0.585
-10	DC 15.87 V	400.025223	0.557
-20	DC 15.87 V	400.025237	0.592
-30	DC 15.87 V	400.025252	0.630

**Middle Channel @ 12.5KHz Channel Separation**

Reference Frequency:	445.000 MHz	Limit:	1.5ppm
Environment Temperature	Power Supply	Frequency Deviation	
(°C)	(V)	(MHz)	ppm
50	DC 15.87 V	445.000274	0.616
40	DC 15.87 V	445.000252	0.566
30	DC 15.87 V	445.000261	0.587
20	DC 15.87 V	445.000257	0.578
10	DC 15.87 V	445.000248	0.557
0	DC 15.87 V	445.000254	0.571
-10	DC 15.87 V	445.000239	0.537
-20	DC 15.87 V	445.000245	0.551
-30	DC 15.87 V	445.000248	0.557

**Top Channel @ 12.5KHz Channel Separation**

Reference Frequency:	489.975 MHz	Limit:	1.5ppm
Environment Temperature	Power Supply	Frequency Deviation	
(°C)	(V)	(MHz)	ppm
50	DC 15.87 V	489.975284	0.580
40	DC 15.87 V	489.975266	0.543
30	DC 15.87 V	489.975292	0.596
20	DC 15.87 V	489.975287	0.586
10	DC 15.87 V	489.975266	0.543
0	DC 15.87 V	489.975254	0.518
-10	DC 15.87 V	489.975249	0.508
-20	DC 15.87 V	489.975257	0.525
-30	DC 15.87 V	489.975279	0.569



## 7. EMISSION BANDWIDTH

### 7.1 PROVISIONS APPLICABLE

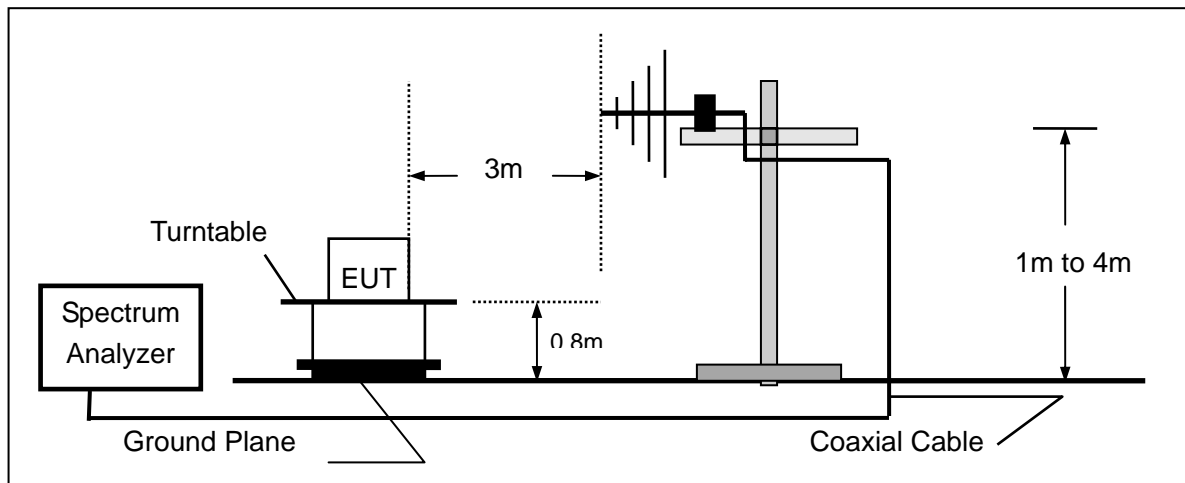
According to FCC Part 90 Section 90.209: The authorized bandwidth shall be 11.25 KHz for 12.5 KHz channel separation.

According to RSS-119 Section 119.5.5: The authorized bandwidth shall be 11.25 KHz for 12.5 KHz

### 7.2 MEASUREMENT PROCEDURE

- 1). The EUT was placed on a turntable which is 0.8m above ground plane.
- 2). The EUT was modulated by 2.5 KHz Sine wave audio signal, The level of the audio signal employed is 16 dB greater than that necessary to produce 50% of rated system deviation. Rated system deviation is 2.5 kHz (12.5 kHz channel spacing).
- 3). Set SPA Center Frequency = fundamental frequency, RBW=100Hz, VBW= 300Hz, Span =50 KHz.
- 4). Set SPA Max hold. Mark peak, -26 dB.

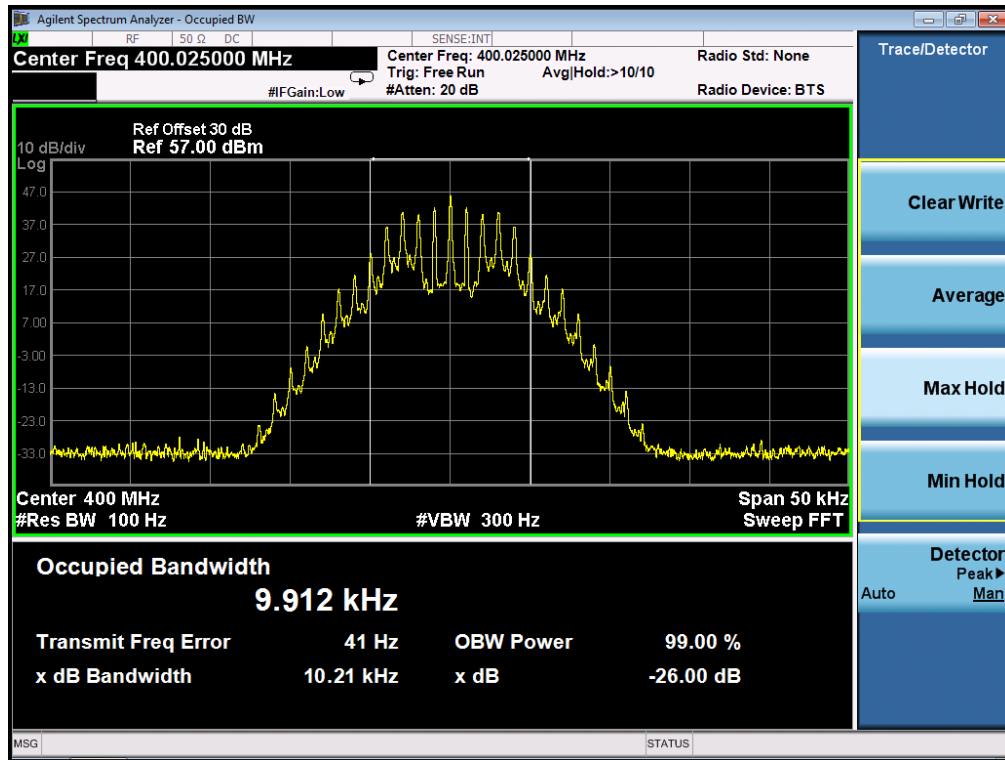
### 7.3 TEST SETUP BLOCK DIAGRAM



7.4 MEASUREMENT RESULT

26 DB BANDWIDTH MEASUREMENT RESULT			
Operating Frequency	12.5KHz Channel Separation		
	Test Data	Limits	Result
400.025MHz	10.21KHz	11.25 KHz	Pass
445.000MHz	10.17KHz	11.25 KHz	Pass
489.975MHz	10.19KHz	11.25 KHz	Pass

**Occupied bandwidth of Low Channel (Maximum)**



## 8. UNWANTED RADIATION

### 8.1 PROVISIONS APPLICABLE

8.1.1 According to Section 90.210, the power of each unwanted emission shall be less than Transmitted Power as specified below for transmitters designed to operate with each channel separation.

According to RSS-119 Section 119.5.8, the power of each unwanted emission shall be less than Transmitted Power as specified below for transmitters with each channel separation.

For 12.5 KHz Channel Separation:

- (1). On any frequency removed from the center of the authorized bandwidth  $f_0$  to 5.625 KHz removed from  $f_0$ : Zero dB.
- (2). On any frequency removed from the center of the authorized bandwidth by a displacement Frequency ( $f_d$  in KHz)  $f_0$  of more than 5.625 KHz but no more than 12.5 KHz: At least  $7.27(f_d - 2.88 \text{ KHz})$  dB
- (3). On any frequency removed from the center of the authorized bandwidth by a displacement Frequency ( $f_d$  in KHz)  $f_0$  of more than 12.5 KHz: At least  $50 + 10 \log(P)$  dB or 70 dB, whichever is lesser attenuation.

### 8.2 MEASUREMENT PROCEDURE

- (1) On a test site, the EUT shall be placed on a turntable, and in the position closest to the normal use as declared by the user.
- (2) The test antenna shall be oriented initially for vertical polarization located 3m from the EUT to correspond to the transmitter.
- (3) The output of the antenna shall be connected to the measuring receiver and either a peak or quasi-peak detector was used for the measurement as indicated on the report. The detector selection is based on how close the emission level was approaching the limit.
- (4) The transmitter shall be switched on; if possible, without the modulation and the measurement receiver shall be tuned to the frequency of the transmitter under test.
- (5) The test antenna shall be raised and lowered through the specified range of height until the measuring receiver detects a maximum signal level.
- (6) The transmitter shall then be rotated through  $360^\circ$  in the horizontal plane, until the maximum signal level is detected by the measuring receiver.
- (7) The test antenna shall be raised and lowered again through the specified range of height until the measuring receiver detects a maximum signal level.
  
- (8) The maximum signal level detected by the measuring receiver shall be noted.
- (9) The measurement shall be repeated with the test antenna set to horizontal polarization.
- (10) Replace the antenna with a proper Antenna (substitution antenna).
- (11) The substitution antenna shall be oriented for vertical polarization and, if necessary, the length of the substitution antenna shall be adjusted to correspond to the frequency of transmitting.
- (12) The substitution antenna shall be connected to a calibrated signal generator.
- (13) If necessary, the input attenuator setting of the measuring receiver shall be adjusted in order to increase the sensitivity of the measuring receiver.

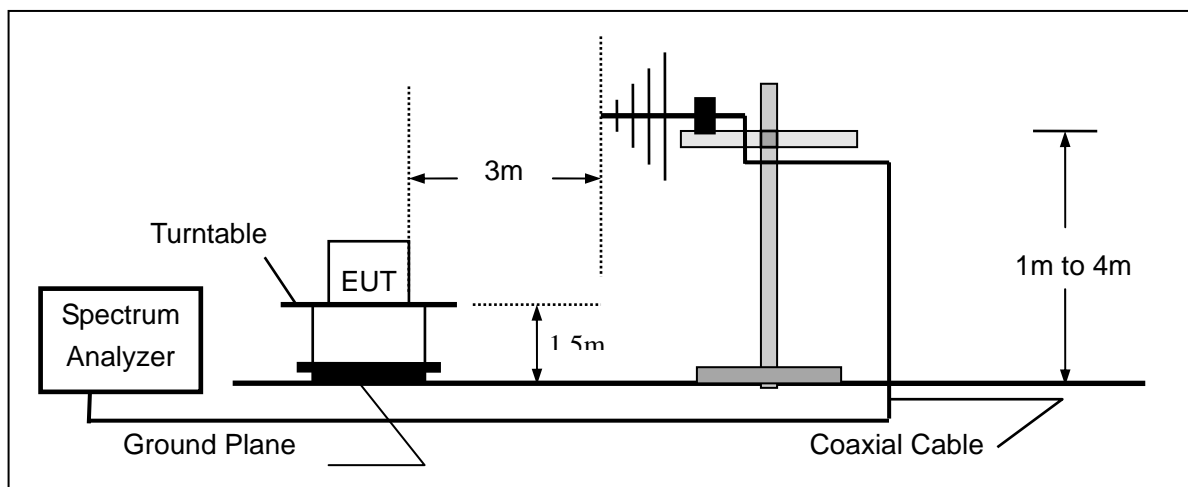
(14)The test antenna shall be raised and lowered through the specified range of the height to ensure that the maximum signal is received.

(15)The input signal to substitution antenna shall be adjusted to the level that produces a level detected by the measuring receiver, that is equal to the level noted while the transmitter radiated power was measured, corrected for the change of input attenuation setting of the measuring receiver.

(16)The input level to the substitution antenna shall be recorded as power level in dBm, corrected for any change of input attenuator setting of the measuring receiver.

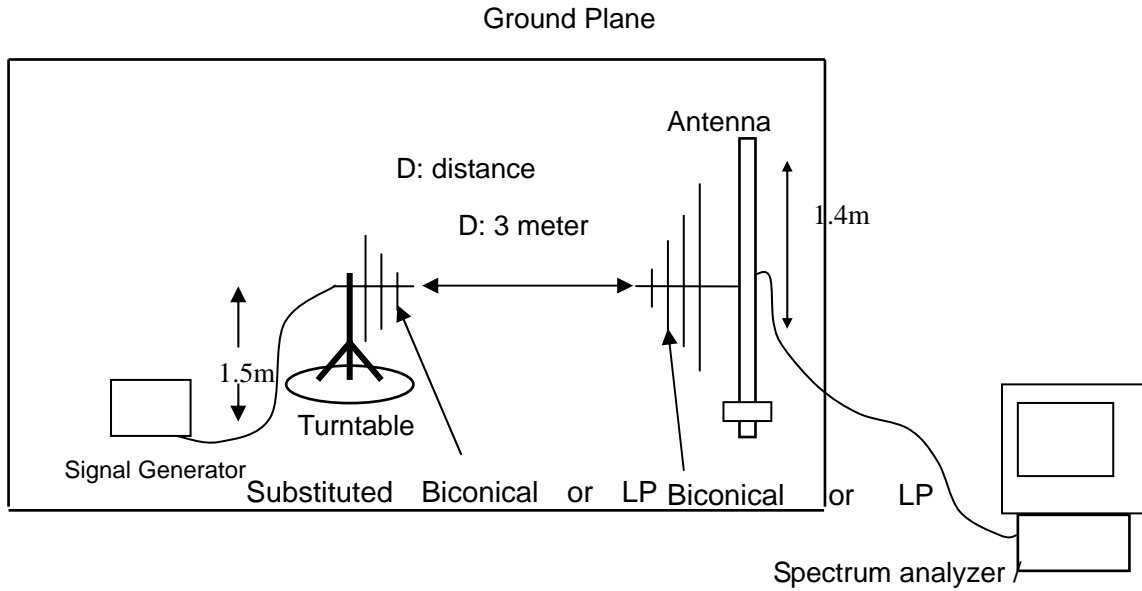
(17)The measurement shall be repeated with the test antenna and the substitution antenna oriented for horizontal polarization.

### 8.3 TEST SETUP BLOCK DIAGRAM

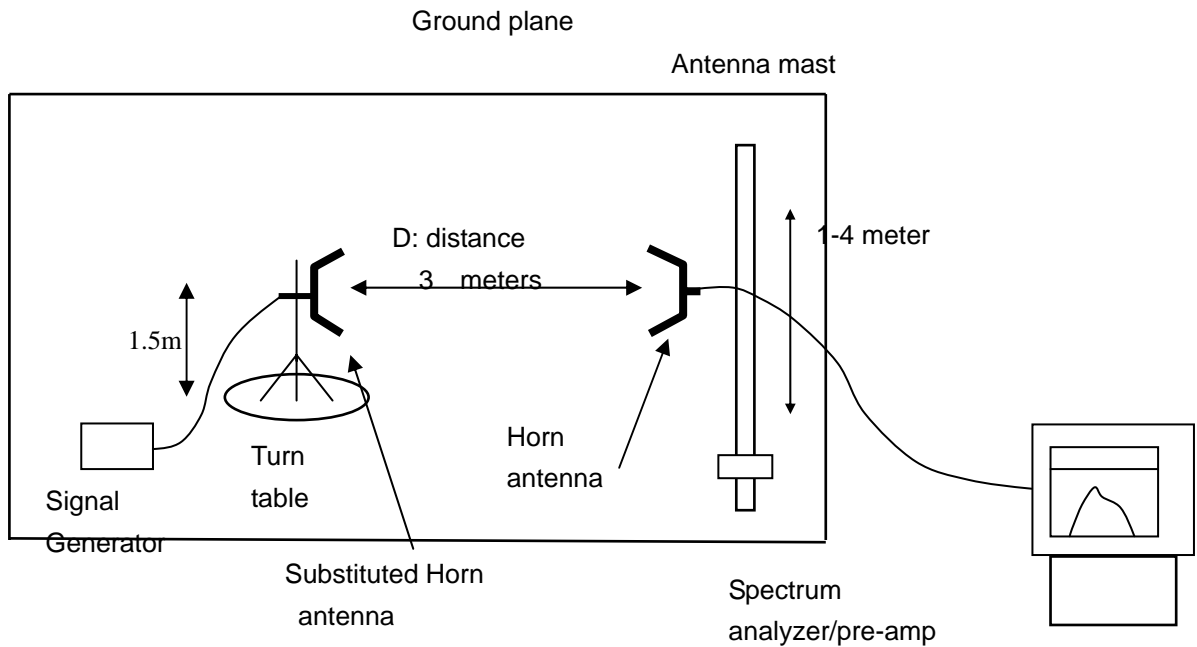


### SUBSTITUTION METHOD: (Radiated Emissions)

#### Radiated Below 1GHz



#### Radiated Above 1 GHz



**8.4 MEASUREMENT RESULTS:**

**Measurement Result for 12.5 KHz Channel Separation**

On any frequency removed from the center of the authorized bandwidth by a displacement Frequency (fd in KHz)for of more than 12.5 KHz: at least 50+10 log(P) dB or 70 dB, whichever is lesser attenuation.

**At least 50+10 log (P) =50+10log (50) =67 (dB)**

**Measurement Result for 12.5KHz Channel Separation @ 400.025MHz**

Emission Frequency (MHz)	Ant. Polarity(H/V)	Measurement Result Below carrier(dBc)	Limit below carrier(dBc)	Result(P/F)
400.025	V	0		pass
800.050	V	69.84	67	pass
1200.08	V	71.51	67	pass
1600.100	V	71.69	67	pass
2000.125	V	72.84	67	pass
2400.150	V	74.43	67	pass
2800.175	V	75.81	67	pass
3200.200	V	77.57	67	pass
3600.225	V	79.86	67	pass
4000.250	V	81.32	67	pass

**Measurement Result for 12.5KHz Channel Separation @ 445.000MHz**

Emission Frequency (MHz)	Ant. Polarity(H/V)	Measurement Result Below carrier(dBc)	Limit below carrier(dBc)	Result(P/F)
445.000	V	0		pass
890.000	V	69.34	67	pass
1335.000	V	72.62	67	pass
1780.000	V	72.56	67	pass
2225.000	V	75.53	67	pass
2670.000	V	76.46	67	pass
3115.000	V	78.21	67	pass
3560.000	V	72.57	67	pass
4005.000	V	80.34	67	pass
4450.000	V	81.45	67	pass

**Measurement Result for 12.5KHz Channel Separation @ 489.975MHz**

Emission Frequency (MHz)	Ant. Polarity(H/V)	Measurement Result Below carrier(dBc)	Limit below carrier(dBc)	Result(P/F)
489.975	V	0		pass
979.950	V	69.85	67	pass
1469.925	V	72.63	67	pass
1959.900	V	73.76	67	pass
2449.875	V	74.57	67	pass
2939.850	V	75.84	67	pass
3429.825	V	77.66	67	pass
3919.800	V	79.53	67	pass
4409.775	V	75.47	67	pass
4899.750	V	81.72	67	pass

**Measurement Result for 12.5KHz Channel Separation @ 400.025MHz**

Emission Frequency (MHz)	Ant. Polarity(H/H)	Measurement Result Below carrier(dBc)	Limit below carrier(dBc)	Result(P/F)
400.025	H	0		pass
800.050	H	68.45	67	pass
1200.08	H	71.72	67	pass
1600.100	H	72.44	67	pass
2000.125	H	73.67	67	pass
2400.150	H	74.33	67	pass
2800.175	H	75.84	67	pass
3200.200	H	77.65	67	pass
3600.225	H	79.84	67	pass
4000.250	H	81.36	67	pass

**Measurement Result for 12.5KHz Channel Separation @ 445.000MHz**

Emission Frequency (MHz)	Ant. Polarity(H/H)	Measurement Result Below carrier(dBc)	Limit below carrier(dBc)	Result(P/F)
445.000	H	0		pass
890.000	H	69.73	67	pass
1335.000	H	71.62	67	pass
1780.000	H	72.35	67	pass
2225.000	H	75.74	67	pass
2670.000	H	76.96	67	pass
3115.000	H	78.63	67	pass
3560.000	H	76.54	67	pass
4005.000	H	80.15	67	pass
4450.000	H	81.27	67	pass

**Measurement Result for 12.5KHz Channel Separation @ 489.975MHz**

Emission Frequency (MHz)	Ant. Polarity(H/H)	Measurement Result Below carrier(dBc)	Limit below carrier(dBc)	Result(P/F)
489.975	H	0		pass
979.950	H	69.82	67	pass
1469.925	H	71.58	67	pass
1959.900	H	73.74	67	pass
2449.875	H	74.46	67	pass
2939.850	H	75.72	67	pass
3429.825	H	77.65	67	pass
3919.800	H	79.56	67	pass
4409.775	H	76.44	67	pass
4899.750	H	81.27	67	pass

**Notes:** The emissions were scanned from 30 MHz to 10th harmonics.

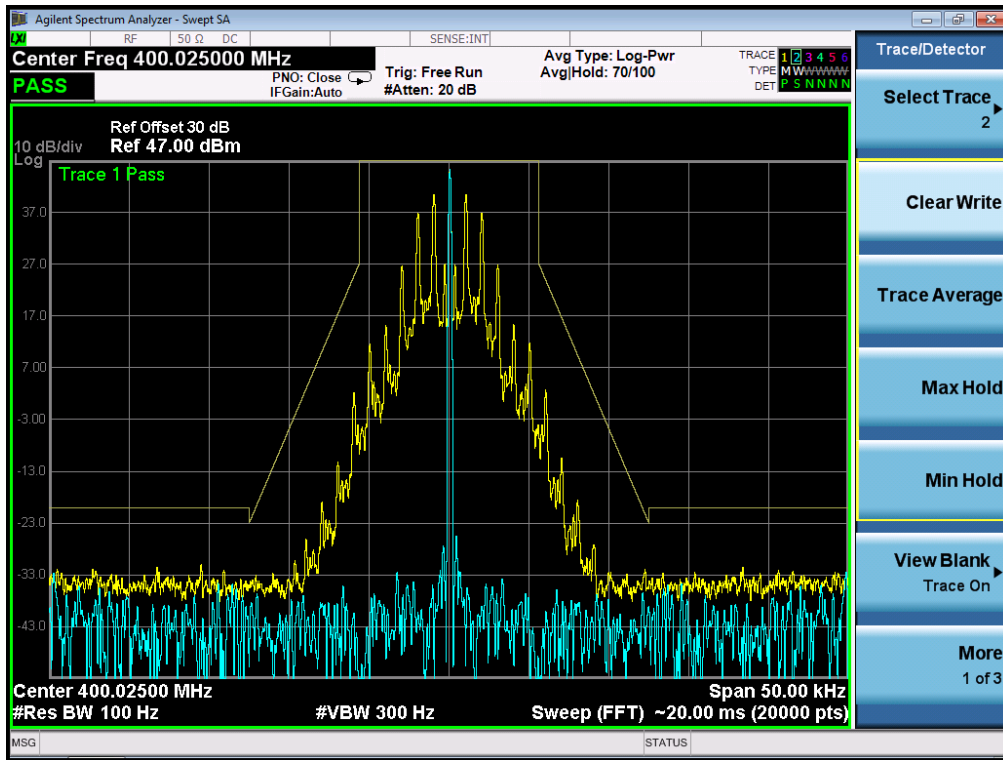


### 8.5 EMISSION MASK PLOT

The detailed procedure employed for Emission Mask measurements are specified as following:

- The transmitter shall be modulated by a 2.5 kHz audio signal,
- The level of the audio signal employed is 16 dB greater than that necessary to produce 50% of rated system deviation. Rated system deviation is 2.5 kHz.

#### The Worst Emission Mask for 12.5KHz channel Separation (50W)



## 9. MODULATION CHARACTERISTICS

### 9.1 PROVISIONS APPLICABLE

According to CFR 47 section 2.1047(a), for Voice Modulation Communication Equipment, the frequency response of the audio modulation circuit over a range of 100 to 5000Hz shall be measured.

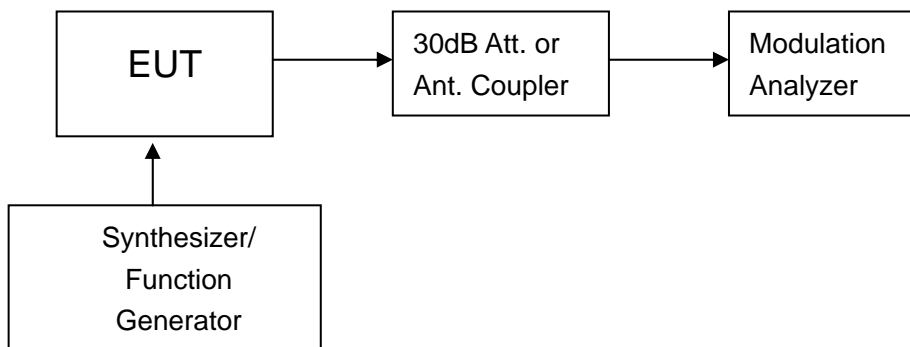
### 9.2 MEASUREMENT METHOD

#### 9.2.1 Modulation Limit

- (1). Configure the EUT as shown in figure 1, adjust the audio input for 60% of rated system deviation at 1KHz using this level as a reference (0dB) and vary the input level from -20 to +20dB. Record the frequency deviation obtained as a function of the input level.
- (2). Repeat step 1 with input frequency changing to 300, 1000, 1500 and 3000Hz in sequence.

#### 9.2.2 Audio Frequency Response

- (1). Configure the EUT as shown in figure 1.
- (2). Adjust the audio input for 20% of rated system deviation at 1 KHz using this level as a reference (0 dB).
- (3). Vary the Audio frequency from 100 Hz to 10 KHz and record the frequency deviation.
- (4). Audio Frequency Response =  $20\log_{10}(\text{Deviation of test frequency}/\text{Deviation of 1 KHz reference})$ .



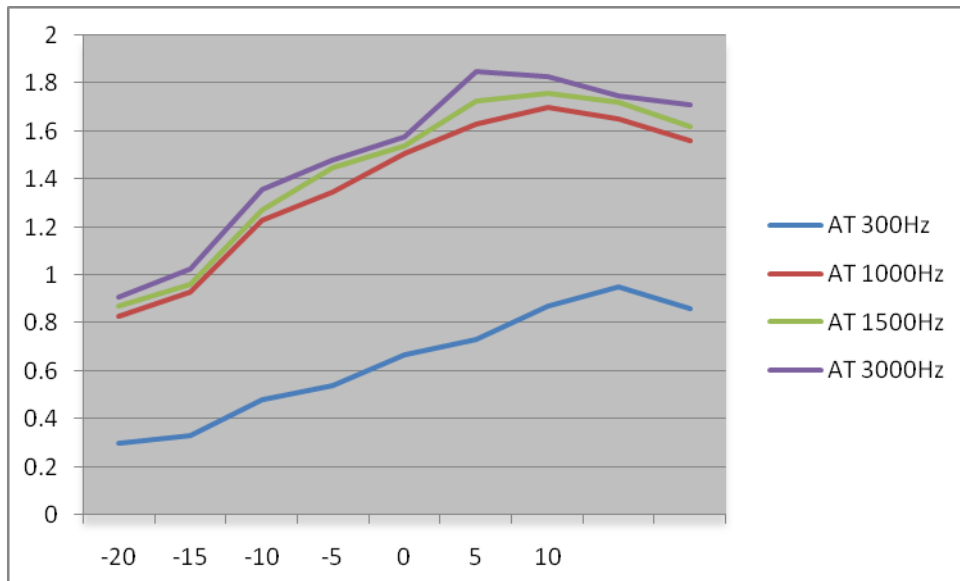
**Figure 1: Modulation characteristic measurement configuration**

**9.3 MEASUREMENT RESULT**

**(A). MODULATION LIMIT:**

**Middle Channel @ 12.5KHz Channel Separations**

Modulation Level (dB)	Peak Freq. Deviation At 300 Hz	Peak Freq. Deviation At 1000 Hz	Peak Freq. Deviation At 1500 Hz	Peak Freq. Deviation At 3000 Hz
-20	0.3	0.83	0.87	0.91
-15	0.33	0.93	0.96	1.03
-10	0.48	1.23	1.27	1.36
-5	0.54	1.35	1.45	1.48
0	0.67	1.51	1.54	1.58
5	0.73	1.63	1.73	1.85
10	0.87	1.7	1.76	1.83
15	0.95	1.65	1.72	1.75
20	0.86	1.56	1.62	1.71



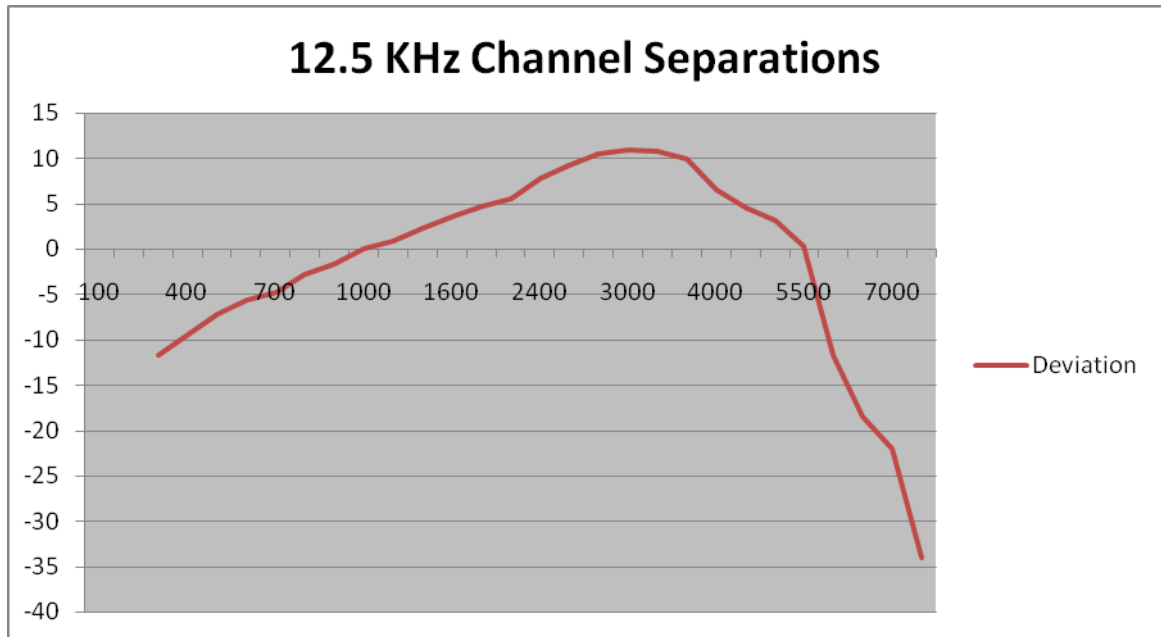
Note: All the modes had been tested, but only the worst data recorded in the report.

**(B). AUDIO FREQUENCY RESPONSE:**

**Middle Channel @ 12.5KHz Channel Separations**

Frequency (Hz)	Deviation (KHz)	Audio Frequency Response(dB)
100	--	--
200	--	--
300	0.13	-11.70
400	0.17	-9.37
500	0.22	-7.13
600	0.26	-5.68
700	0.29	-4.73
800	0.36	-2.85
900	0.41	-1.72
1000	0.5	0.00
1200	0.55	0.83
1400	0.65	2.28
1600	0.75	3.52
1800	0.86	4.71
2000	0.94	5.48
2400	1.22	7.75
2500	1.44	9.19
2800	1.66	10.42
3000	1.75	10.88
3200	1.71	10.68
3600	1.56	9.88
4000	1.05	6.44
4500	0.84	4.51
5000	0.72	3.17
5500	0.52	0.34
6000	0.13	-11.70
6500	0.06	-18.42
7000	0.04	-21.94
7500	0.01	-33.98
9000	--	--
10000	--	--
14000	--	--
18000	--	--
20000	--	--
30000	--	--

**Frequency Response of Middle Channel (UHF)**



Note: All the modes had been tested, but only the worst data recorded in the report.

## 10. MAXIMUM TRANSMITTER POWER

### 10.1 PROVISIONS APPLICABLE

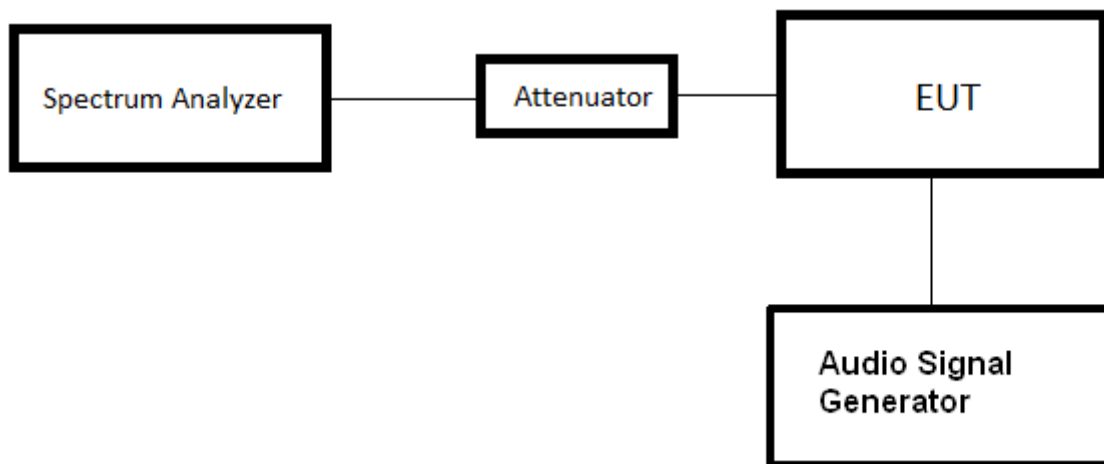
Per FCC §2.1046 and §90.205 AND RSS 119 Part 4.1: Maximum ERP is dependent upon the station's antenna HAAT and required service area.

### 10.2 TEST PROCEDURE

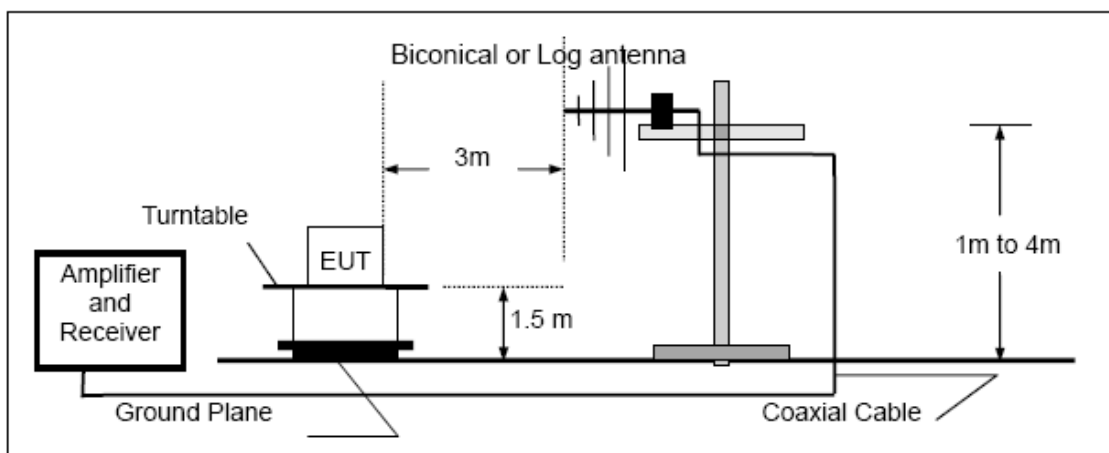
The RF output of Two-way Radio was conducted to a spectrum analyzer through an appropriate attenuator.

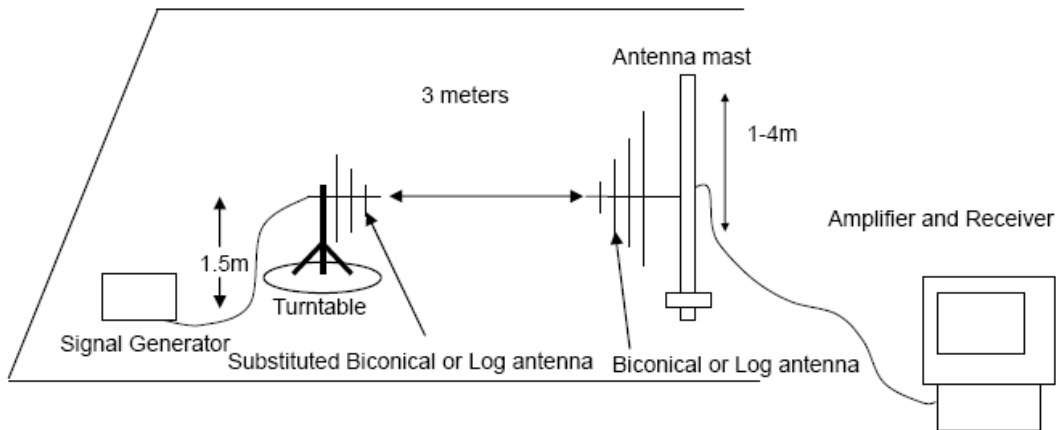
### 10.3 TEST CONFIGURATION

Conducted Output Power:

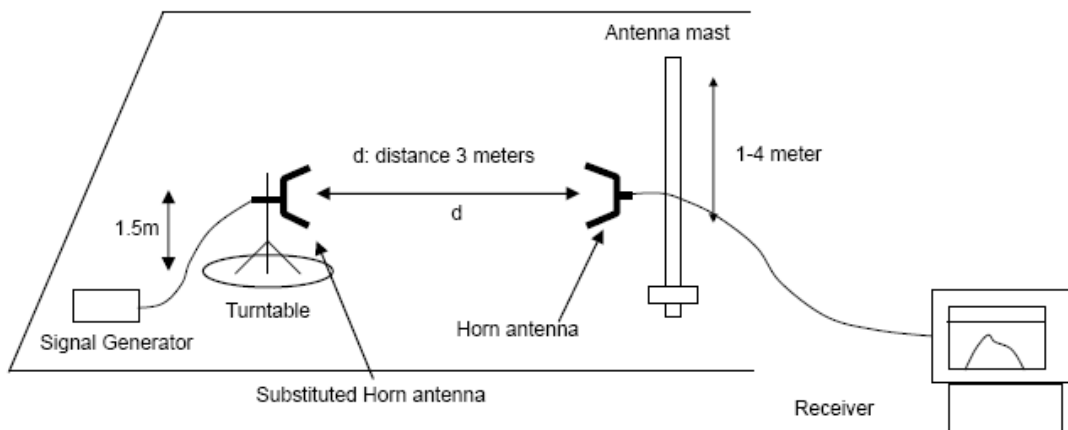
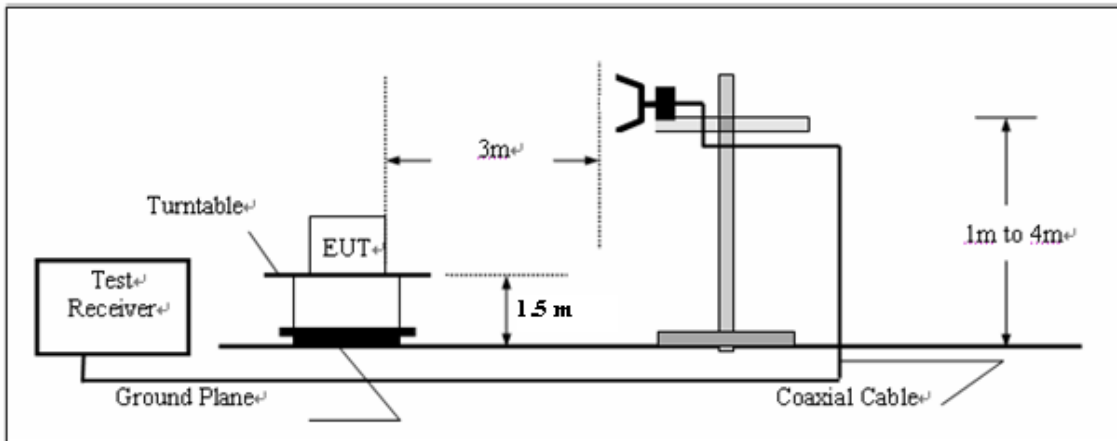


Effective Radiated Power measurement  
Below 1GHz





**Above 1GHz**



**10.4 TEST RESULT**

The maximum Conducted Power (CP) is  
50W for 12.5 KHz Channel Separation

Calculation Formula:  $CP = R + A + L$

\* Note:

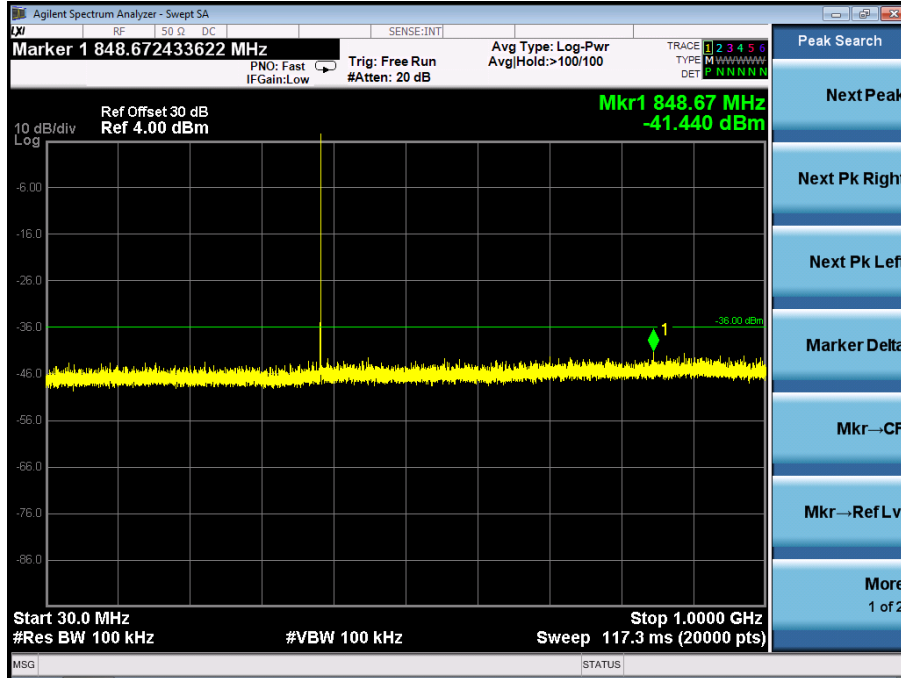
- CP: The final Conducted Power
- R : The reading value from spectrum analyzer
- A : The attenuation value of the used attenuator
- L : The loss of all connection cables

<b>Conducted Power Measurement Results</b>		
<b>Channel Separation</b>	<b>Channel</b>	<b>Measurement Result (dBm)</b>
		<b>For 46.99dBm(50W)</b>
12.5KHz	Bottom(400.025MHz)	46.89
	Middle(445.000MHz)	46.85
	Top (489.975MHz)	46.87

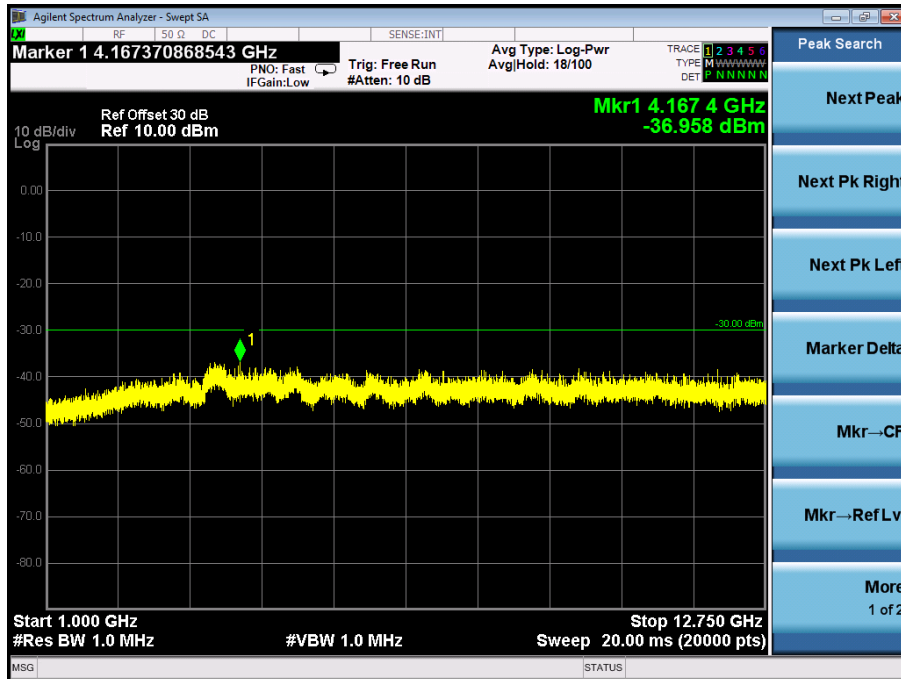


### 10.5 CONDUCT SPURIOUS PLOT

#### Conducted Spurious Emission (worst) @ 400.025MHz With 12.5KHz Channel Separation 30MHz-1GHz



#### Conduct Spurious Emission (worst) @ 400.025MHz With 12.5KHz Channel Separation 1GHz-12.75GHz



## 11. TRANSMITTER FREQUENCY BEHAVIOR

### 11.1 PROVISIONS APPLICABLE

Section 90.214

Time intervals <sup>1, 2</sup>	Maximum frequency difference <sup>3</sup>	All equipment	
		150 to 174 MHz	421 to 512 MHz
Transient Frequency Behavior for Equipment Designed to Operate on 25 kHz Channels			
t <sub>1</sub> <sup>4</sup> .....	± 25.0 kHz	5.0 ms	10.0 ms
t <sub>2</sub> .....	± 12.5 kHz	20.0 ms	25.0 ms
t <sub>3</sub> <sup>4</sup> .....	± 25.0 kHz	5.0 ms	10.0 ms
Transient Frequency Behavior for Equipment Designed to Operate on 12.5 kHz Channels			
t <sub>1</sub> <sup>4</sup> .....	± 12.5 kHz	5.0 ms	10.0 ms
t <sub>2</sub> .....	± 6.25 kHz	20.0 ms	25.0 ms
t <sub>3</sub> <sup>4</sup> .....	± 12.5 kHz	5.0 ms	10.0 ms
Transient Frequency Behavior for Equipment Designed to Operate on 6.25 kHz Channels			
t <sub>1</sub> <sup>4</sup> .....	± 6.25 kHz	5.0 ms	10.0 ms
t <sub>2</sub> .....	± 3.125 kHz	20.0 ms	25.0 ms
t <sub>3</sub> <sup>4</sup> .....	± 6.25 kHz	5.0 ms	10.0 ms

<sup>1</sup> t<sub>on</sub> is the instant when a 1 kHz test signal is completely suppressed, including any capture time due to phasing.

t<sub>1</sub> is the time period immediately following t<sub>on</sub>.

t<sub>2</sub> is the time period immediately following t<sub>1</sub>.

t<sub>3</sub> is the time period from the instant when the transmitter is turned off until t<sub>off</sub>.

t<sub>off</sub> is the instant when the 1 kHz test signal starts to rise.

<sup>2</sup> During the time from the end of t<sub>2</sub> to the beginning of t<sub>3</sub>, the frequency difference must not exceed the limits specified in § 90.213.

<sup>3</sup> Difference between the actual transmitter frequency and the assigned transmitter frequency.

<sup>4</sup> If the transmitter carrier output power rating is 6 watts or less, the frequency difference during this time period may exceed the maximum frequency difference for this time period.

### 11.2 TEST METHOD

TIA/EIA-603 2.2.19

### 11.3 DESCRIBE LIMIT LINE OF TRANSMITTER FREQUENCY BEHAVIOR

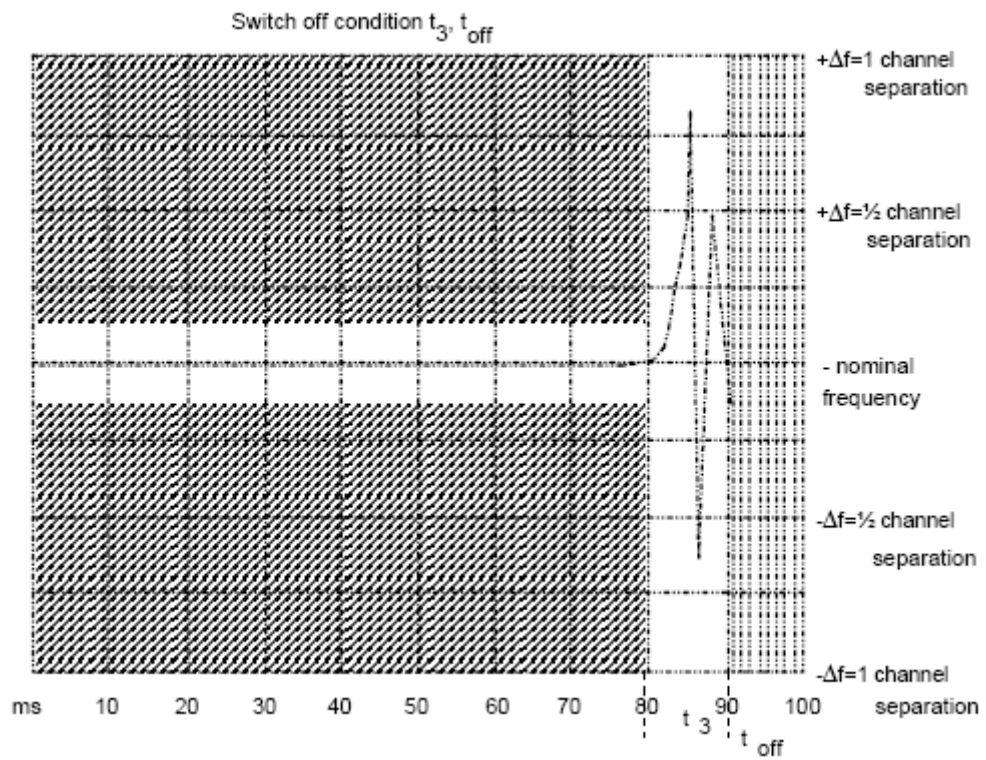
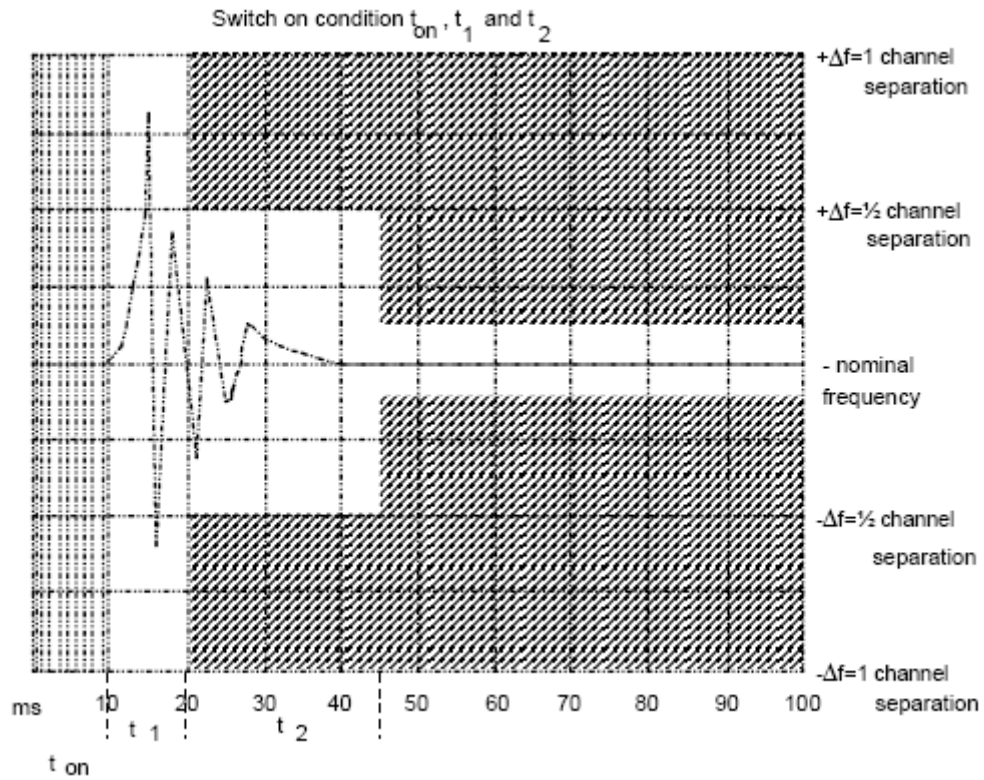
**ton:** The switch-on instant ton of a transmitter is defined by the condition when the output power, measured at the antenna terminal, exceeds 0,1 % of the full output power (-30 dBc).

**t1:** period of time starting at ton and finishing according to above 11.1

**t2:** period of time starting at the end of t1 and finishing according to above 11.1

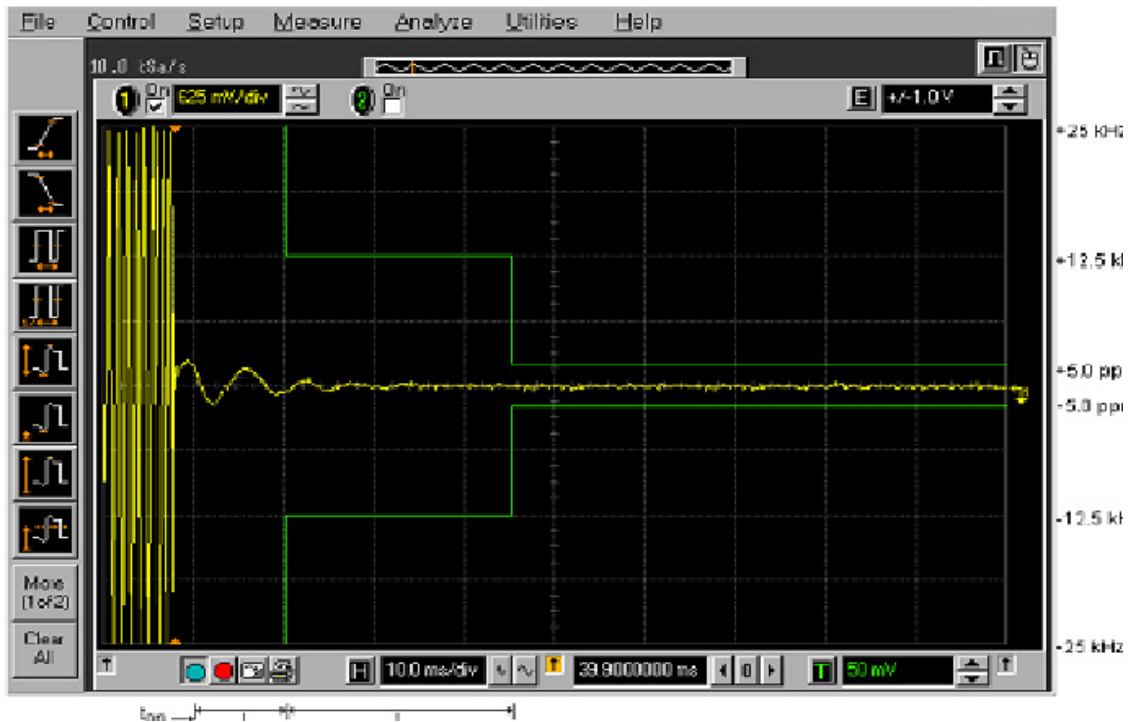
**toff:** switch-off instant defined by the condition when the output power falls below 0,1 % of the full output power (-30 dBc).

**t3:** period of time that finishing at toff and starting according to above 11.1



### 11.4 MEASURE RESULT

Transmitter Frequency Behaviour @ 12.5 KHz Channel Separation--Off to On



Transmitter Frequency Behaviour @ 12.5 KHz Channel Separation--On to Off



## **12. RADIATED EMISSION ON RECEIVING MODE**

### **12.1 PROVISIONS APPLICABLE**

FCC Part 15 Subpart B Section 15.109

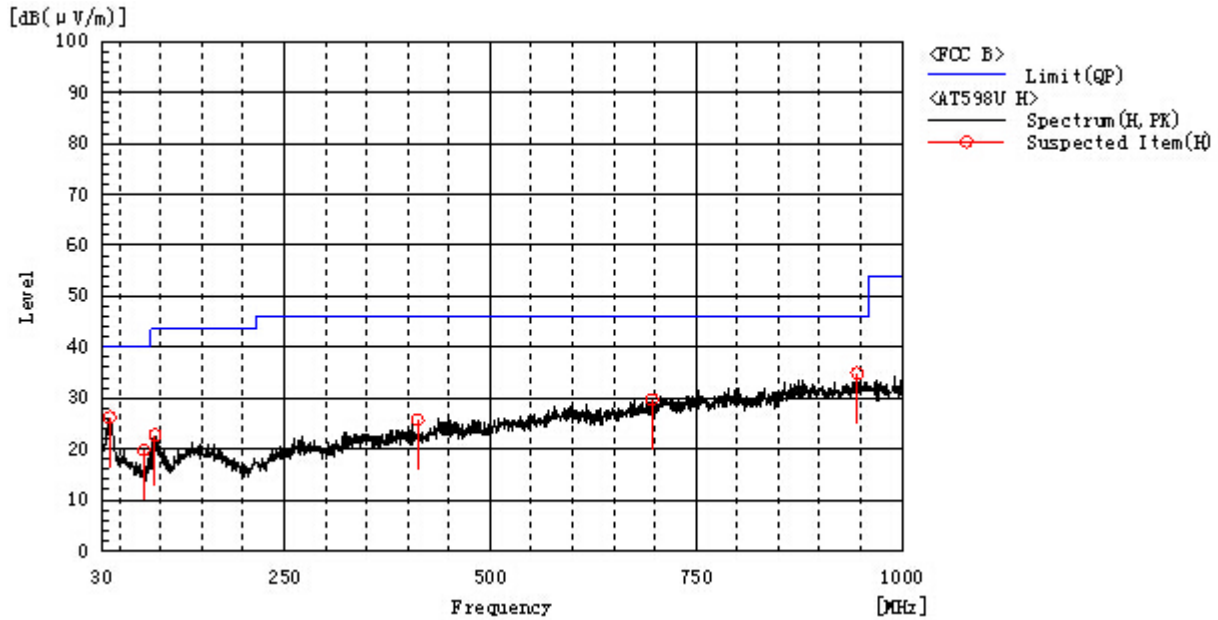
RSS-Gen Subpart B Section RSS-Gen.6.1

### **12.2 TEST METHOD**

ANSI C 63.4: 2003

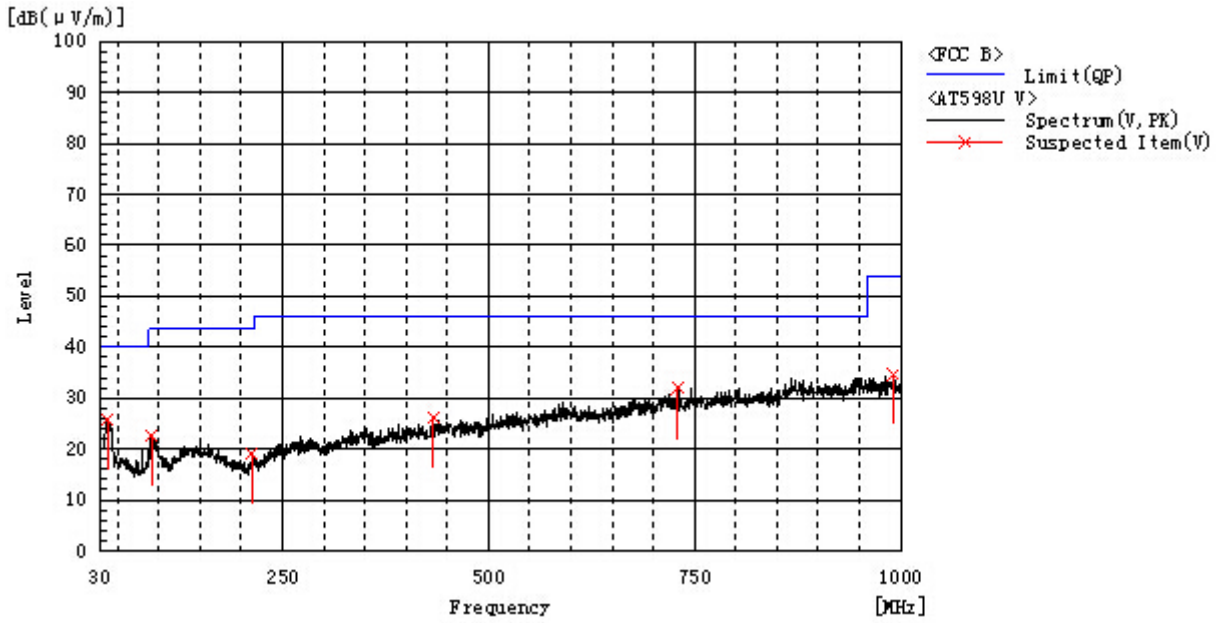
**12.3 MEASURE RESULT (MEASURED AT 3M USING FCC PART15 B LIMITS)**

**RADIATED EMISSION TEST RESULTS – HORIZONTAL**



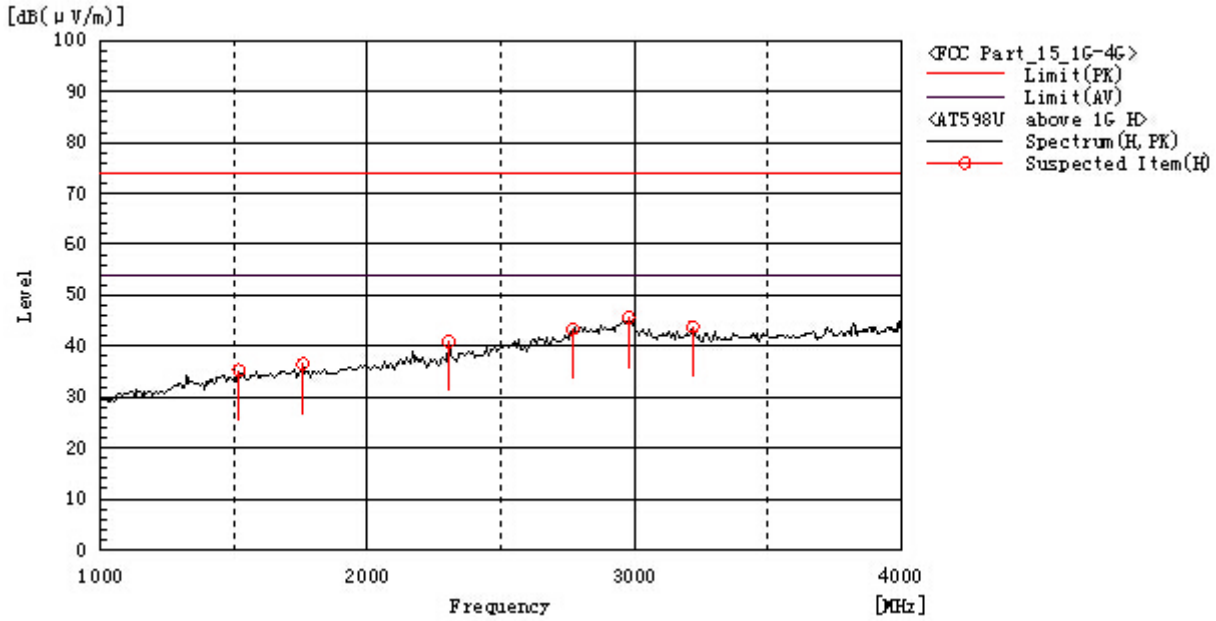
Frequency MHz	Polarization	Reading dB(uV)	Factor dB (1/m)	Level dB(uV/m) PK	Limit dB(uV/m) QP	Margin dB	Pass/Fail	Height cm	Angle deg
38.245	H	5.0	21.2	26.2	40.0	13.8	Pass	100.0	178.1
79.955	H	10.0	9.8	19.8	40.0	20.2	Pass	200.0	183.0
93.535	H	13.2	9.5	22.7	43.5	20.8	Pass	200.0	73.6
412.180	H	7.0	18.7	25.7	46.0	20.3	Pass	150.0	356.6
696.390	H	5.4	24.3	29.7	46.0	16.3	Pass	150.0	108.8
945.680	H	6.3	28.6	34.9	46.0	11.1	Pass	150.0	179.3

RADIATED EMISSION TEST RESULTS – VERTICAL



Frequency MHz	Polarization	Reading dB(uV)	Factor dB (1/m)	Level dB(uV/m) PK	Limit dB(uV/m) QP	Margin dB	Pass/Fail	Height cm	Angle deg
38.245	V	4.6	21.2	25.8	40.0	14.2	Pass	200.0	324.6
990.785	V	6.3	28.4	34.7	54.0	19.3	Pass	200.0	251.9
91.110	V	13.3	9.4	22.7	43.5	20.8	Pass	200.0	324.6
213.330	V	7.5	11.6	19.1	43.5	24.4	Pass	100.0	287.5
729.855	V	7.1	24.8	31.9	46.0	14.1	Pass	200.0	185.1
433.520	V	6.8	19.5	26.3	46.0	19.7	Pass	200.0	144.2

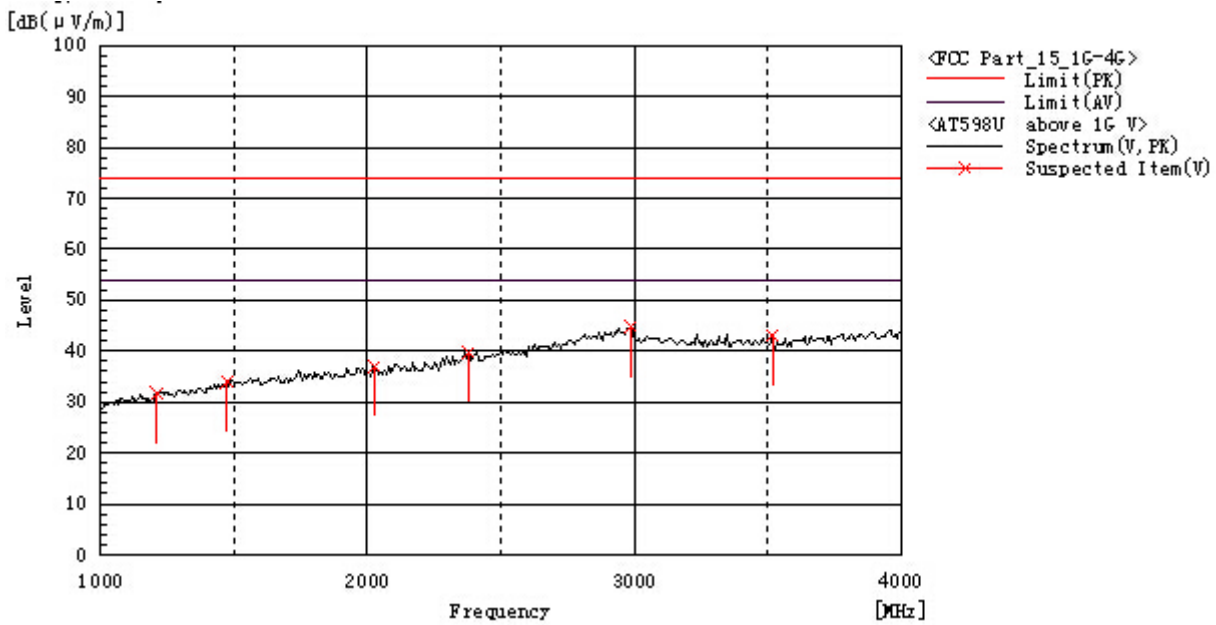
RADIATED EMISSION TEST RESULTS – HORIZONTAL (ABOVE 1G)



Frequency MHz	Polarization	Reading dB(uV)	Factor dB (1/m)	Level dB(uV/m) PK	Limit dB(uV/m) PK	Margin dB PK	Pass/Fail	Height cm	Angle deg
2305.000	H	42.1	-1.2	40.9	74.0	33.1	Pass	100.0	180.9
2770.000	H	40.9	2.4	43.3	74.0	30.7	Pass	100.0	74.6
2980.000	H	42.2	3.4	45.6	74.0	28.4	Pass	100.0	145.9
1517.500	H	39.3	-4.0	35.3	74.0	38.7	Pass	100.0	252.3
1757.500	H	39.8	-3.3	36.5	74.0	37.5	Pass	100.0	74.6
3220.000	H	39.9	3.9	43.8	74.0	30.2	Pass	200.0	30.3



RADIATED EMISSION TEST RESULTS – VERTICAL (ABOVE 1G)



Frequency MHz	Polarization	Reading dB(uV)	Factor dB (1/m)	Level dB(uV/m) PK	Limit dB(uV/m) PK	Margin dB PK	Pass/Fail	Height cm	Angle deg
2987.500	V	41.2	3.5	44.7	74.0	29.3	Pass	100.0	65.5
2380.000	V	40.4	-0.6	39.8	74.0	34.2	Pass	200.0	72.4
2027.500	V	39.6	-2.6	37.0	74.0	37.0	Pass	200.0	251.5
1210.000	V	38.0	-6.2	31.8	74.0	42.2	Pass	100.0	207.3
1472.500	V	38.1	-4.2	33.9	74.0	40.1	Pass	200.0	181.0
3520.000	V	38.7	4.3	43.0	74.0	31.0	Pass	200.0	36.9

### 13. AUDIO LOW PASS FILTER RESPONSE

#### 13.1 LIMITS

**2.1047(a):** Voice modulated communication equipment. A curve or equivalent data showing the frequency response of the audio modulating circuit over a range of 100 to 5000 Hz shall be submitted. For equipment required to have an audio low-pass filter, a curve showing the frequency response of the filter or of all circuitry installed between the modulation limiter and the modulated stage shall be submitted.

**90.242(b)(8):** Recommended audio filter attenuation characteristics are given below:

Audio band	Minimum Attenuation Rel. to 1 KHz Attenuation
3 –20 KHz	$60 \log_{10}(f/3)$ dB where f is in KHz
20 – 30 KHz	50dB

#### 13.2. METHOD OF MEASUREMENTS

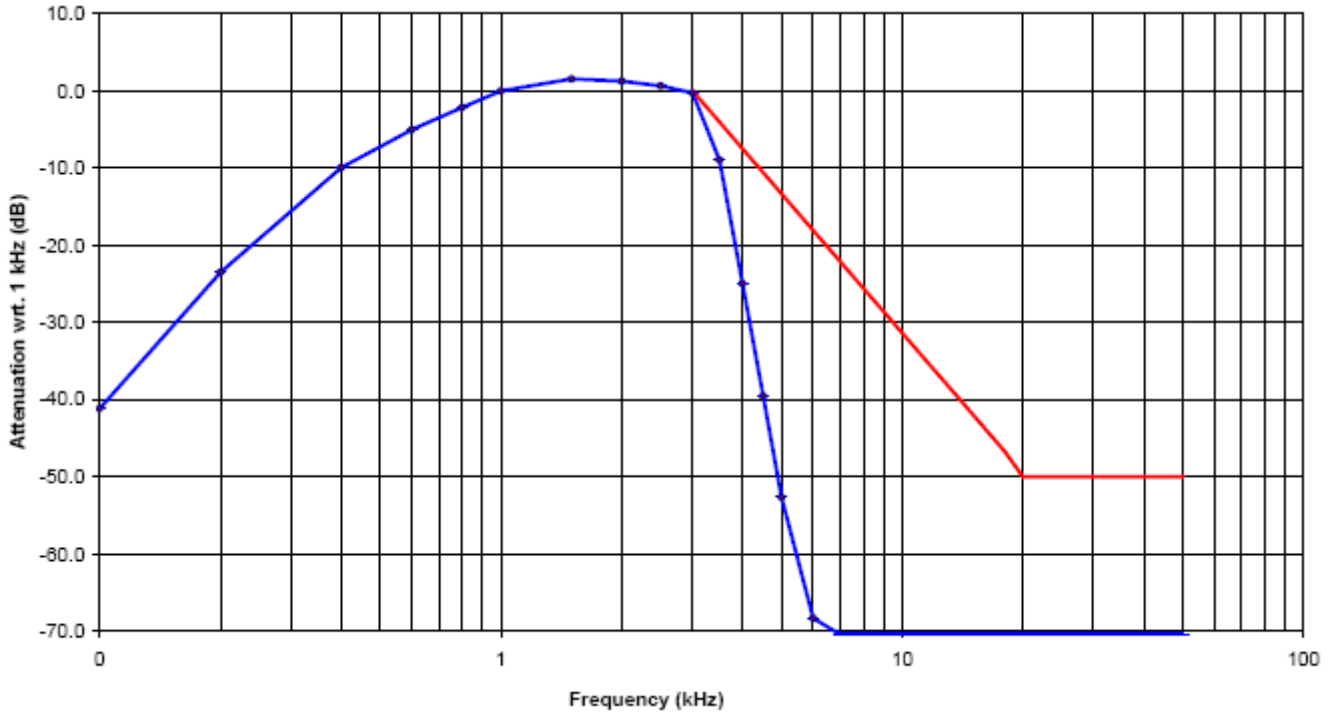
The rated audio input signal was applied to the input of the audio low-pass filter (or of all modulation stages) using an audio oscillator, this input signal level and its corresponding output signal were then measured and recorded using the FFT Digital Spectrum Analyzer. Tests were repeated at different audio signal frequencies from 0 to 50 KHz.

**13.3 TEST DATA**

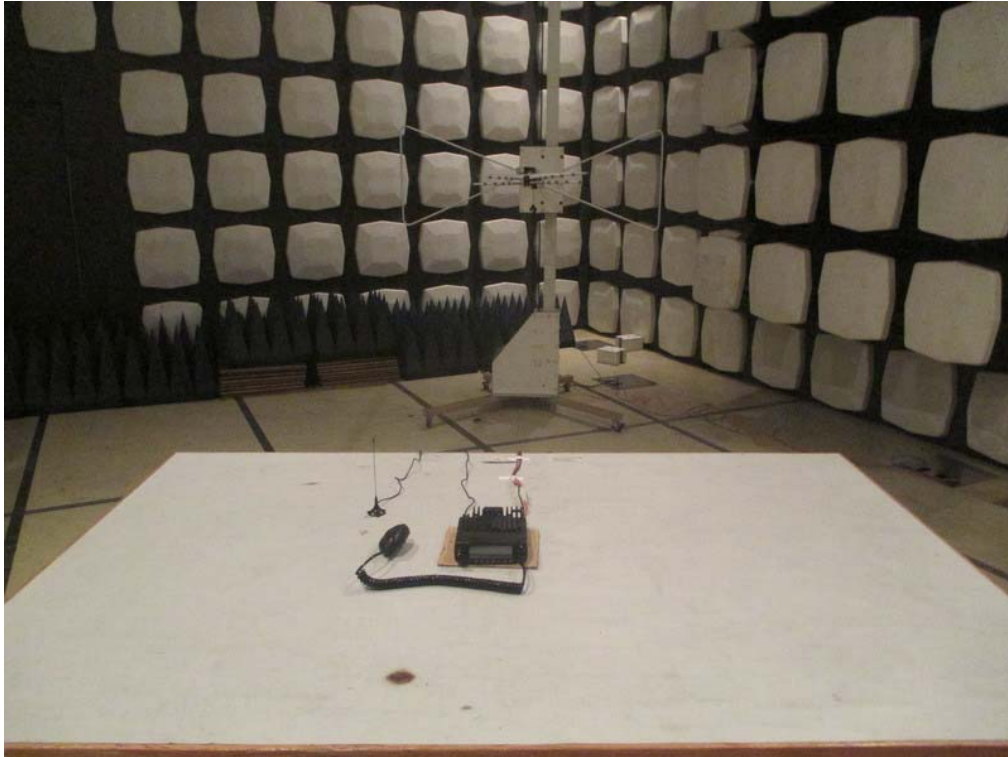
**12.5 KHZ CHANNEL SPACING, F3E, FREQUENCY OF ALL MODULATION STATES (TEST RESULT FOR UHF)**

Frequency	Audio In	Audio out	Attenuation	Attenuation	Recommended Attenuation
(KHz)	(dBV)	(dBV)	(Out_In)	Rel.to 3 KHz	(dB)
			dB	(dB)	
0.1	-76.15	-31.24	46.36	-36.55	
0.2	-76.15	-17.35	58.21	-25.65	
0.4	-76.15	-6.27	71.64	-12.85	
0.6	-76.15	0.42	74.25	-6.45	
0.8	-76.15	4.17	78.96	-2.95	
1.0	-76.15	7.13	83.66	-0.07	
1.5	-76.15	8.24	84.86	2.15	
2.0	-76.15	8.95	85.36	1.55	
2.5	-76.15	7.53	83.86	0.65	
3.0	-76.15	6.22	82.56	-1.83	0
3.5	-76.15	2.63	78.46	-4.94	-4
4.0	-76.15	-2.27	74.66	-9.44	-7
4.5	-76.15	-9.2	68.25	-16.54	-12
5.0	-76.15	-15.16	60.65	-21.74	-15
6.0	-76.15	-21.22	54.15	-28.63	-18
7.0	-76.15	-31.6	46.25	-36.43	-22
8.0	-76.15	-39.21	37.95	-47.65	-26
9.0	-76.15	-61.94	15.16	-66.95	-28
10.0	-76.15	-61.94	15.16	-66.45	-31
12.0	-76.15	-61.94	15.16	-66.45	-37
14.0	-76.15	-61.94	15.16	-66.45	-40
16.0	-76.15	-61.94	15.16	-66.45	-44
18.0	-76.15	-61.94	15.16	-66.45	-47
20.0	-76.15	-61.94	15.16	-66.45	-49
25.0	-76.15	-61.94	15.16	-66.45	-49
30.0	-76.15	-61.94	15.16	-66.45	-49
35.0	-76.15	-61.94	15.16	-66.45	-49
40.0	-76.15	-61.94	15.16	-66.45	-49
45.0	-76.15	-61.94	15.16	-66.45	-49
50.0	-76.15	-61.94	15.16	-66.45	-49

**Note:** Due to the difficulty of measuring the Frequency Response of the internal low-pass filter, the Frequency Response of All Modulation States is performed to show the roll-off at 3 KHz in comparison with the recommended audio filter attenuation.



**APPENDIX I: PHOTOGRAPHS OF SETUP**  
RADIATED EMISSION TEST SETUP



**APPENDIX II: EXTERNAL VIEW OF EUT**  
TOTAL VIEW OF EUT



TOP VIEW OF EUT



BOTTOM VIEW OF EUT



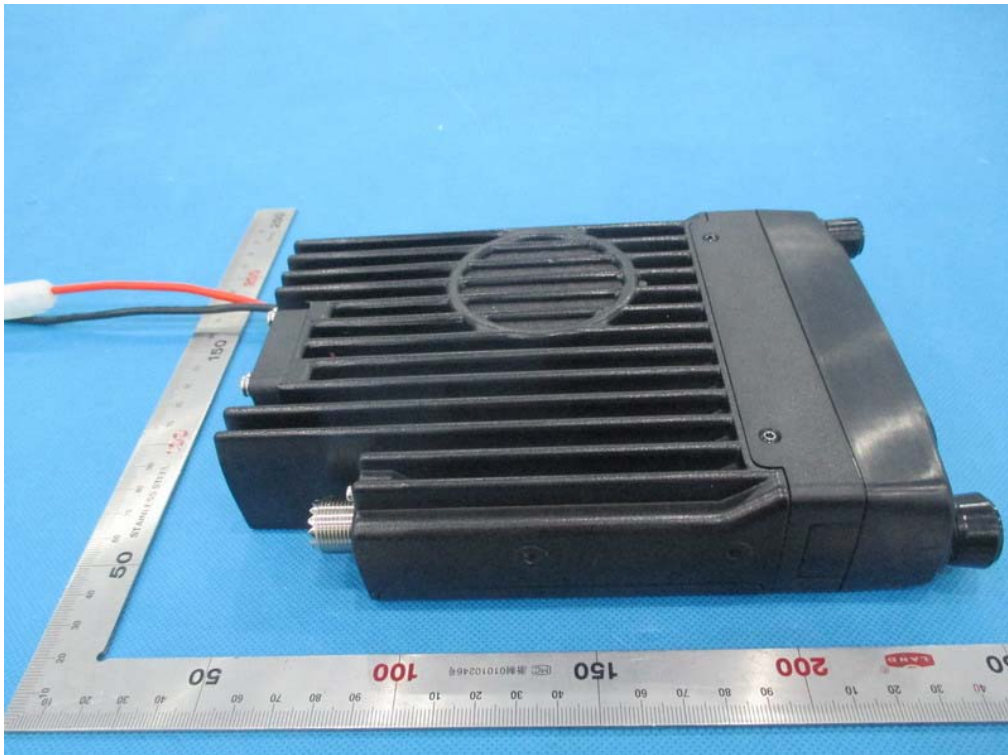
FRONT VIEW OF EUT



BACK VIEW OF EUT



LEFT VIEW OF EUT

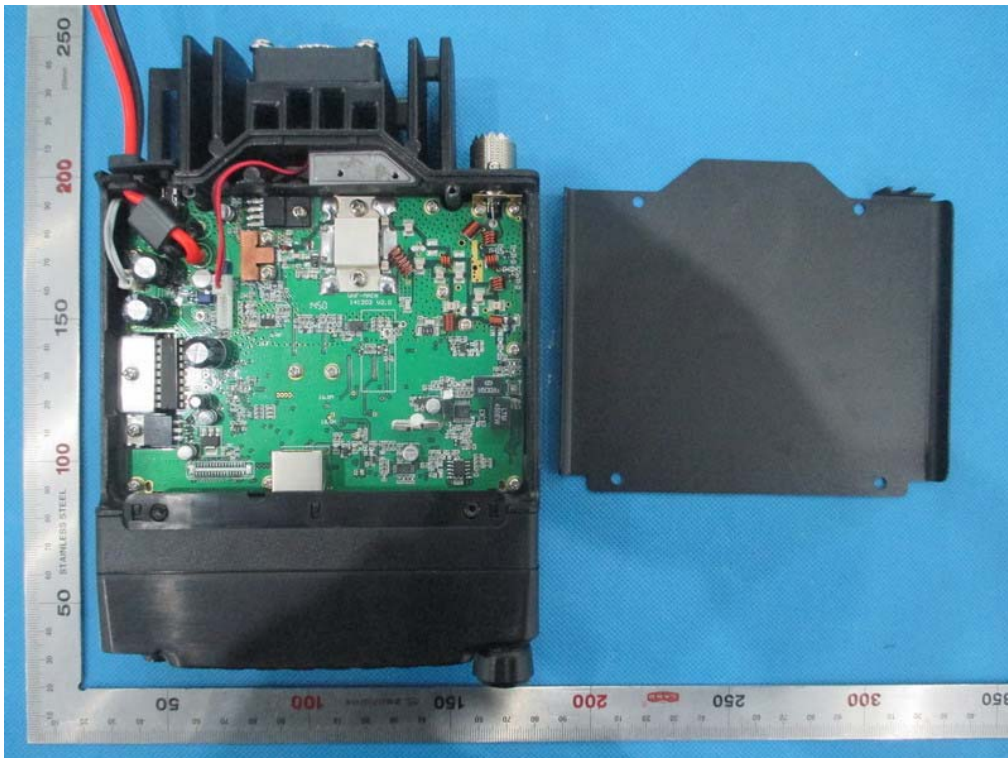




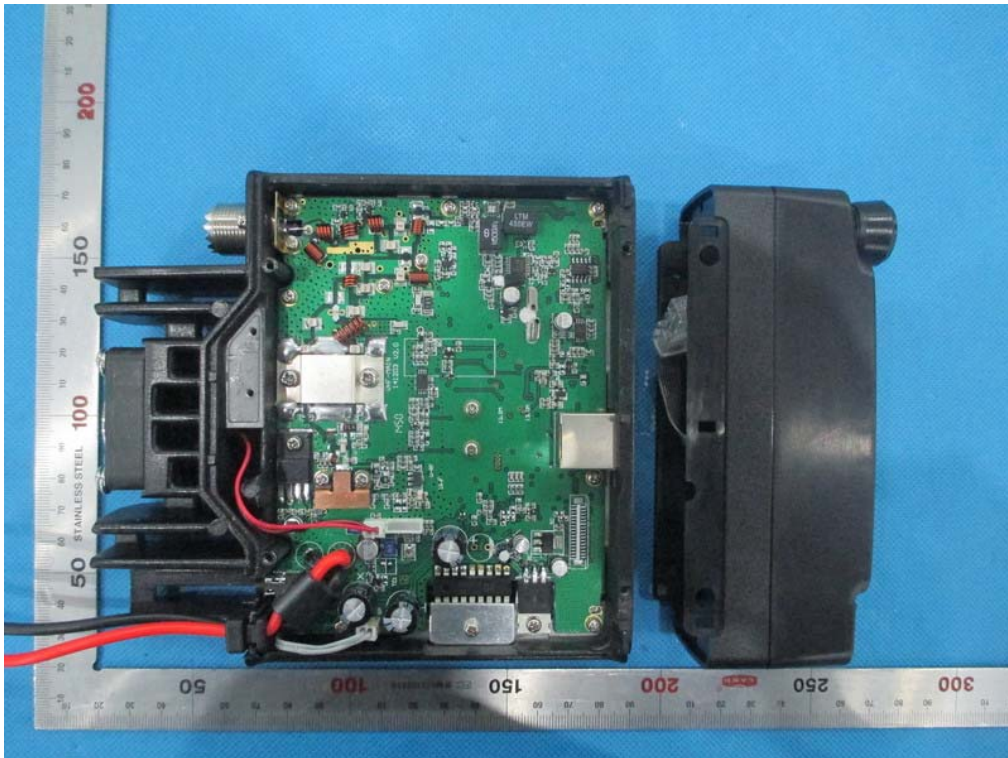
RIGHT VIEW OF EUT



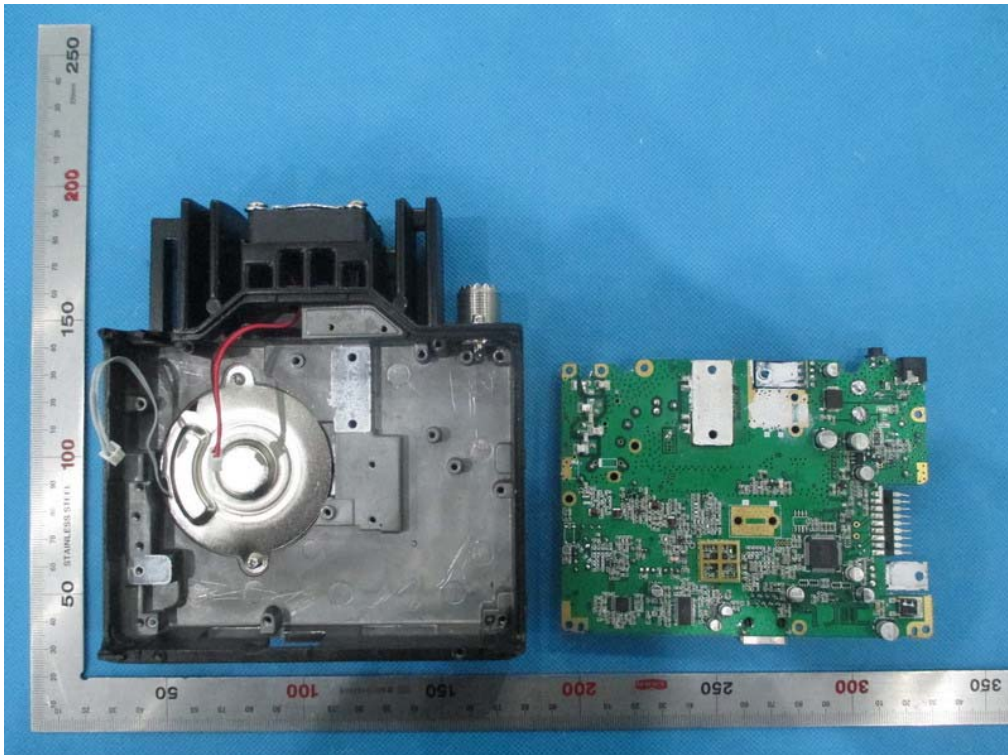
OPEN VIEW-1 OF EUT



OPEN VIEW-2 OF EUT



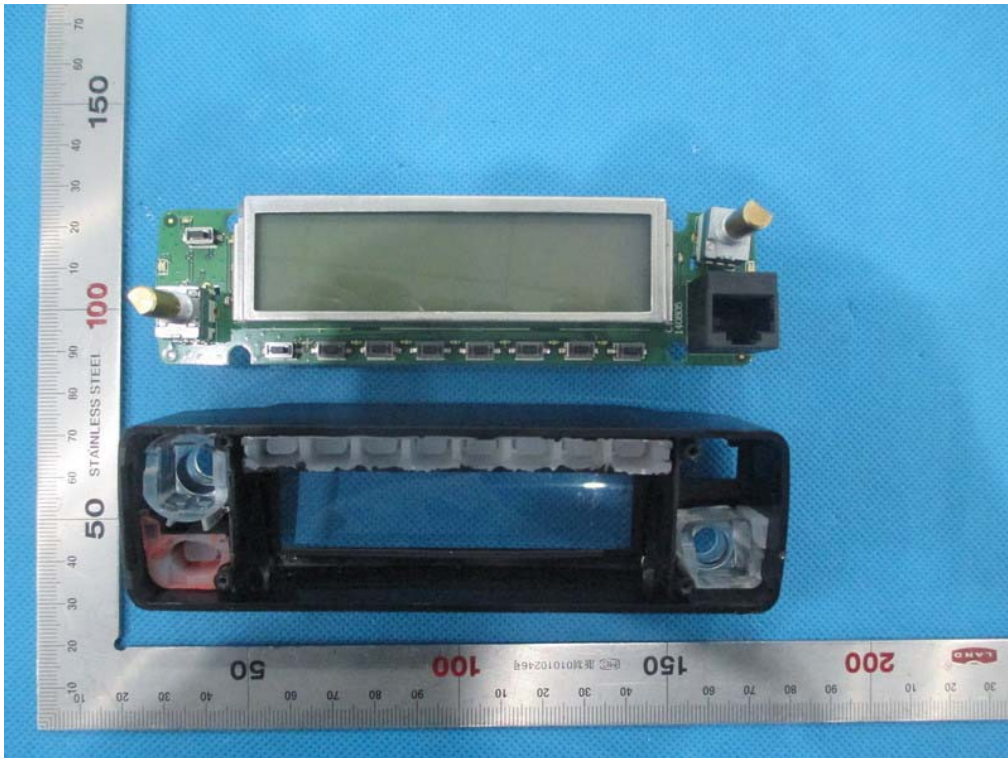
OPEN VIEW-3 OF EUT



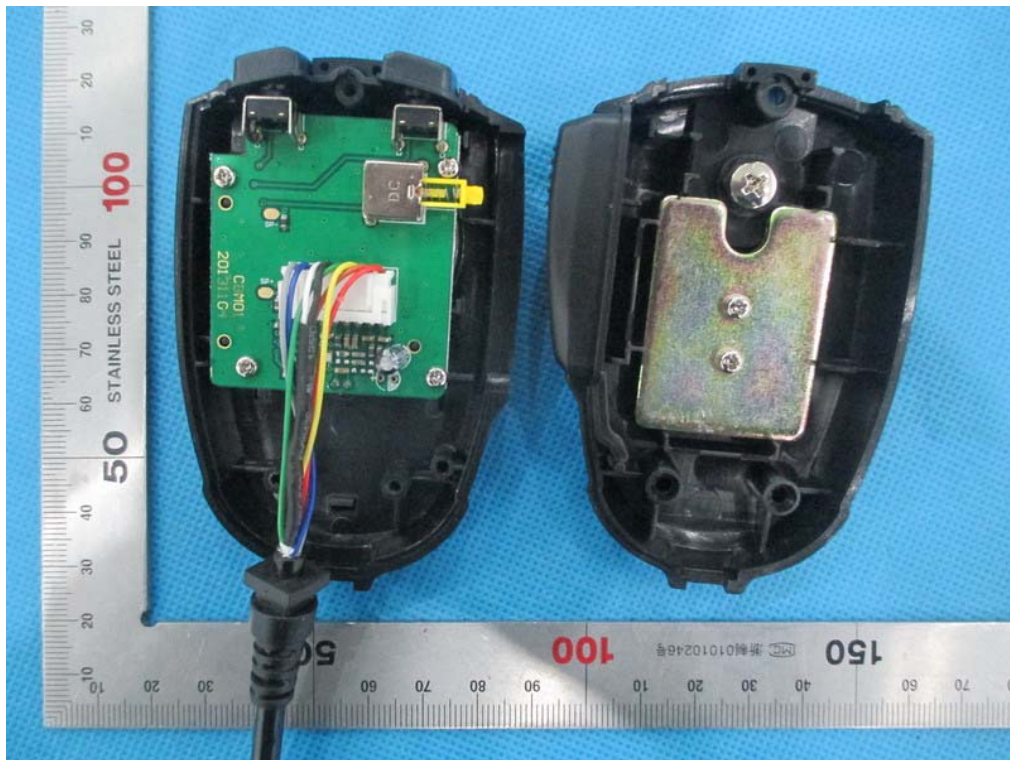
OPEN VIEW-4 OF EUT



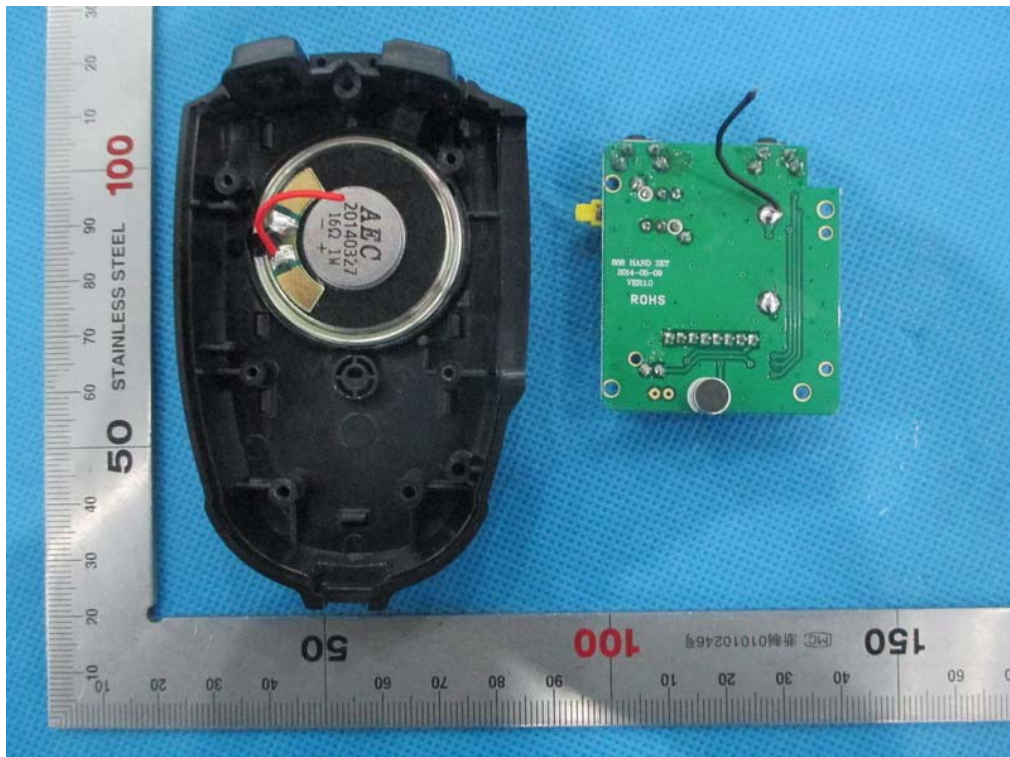
OPEN VIEW-5 OF EUT



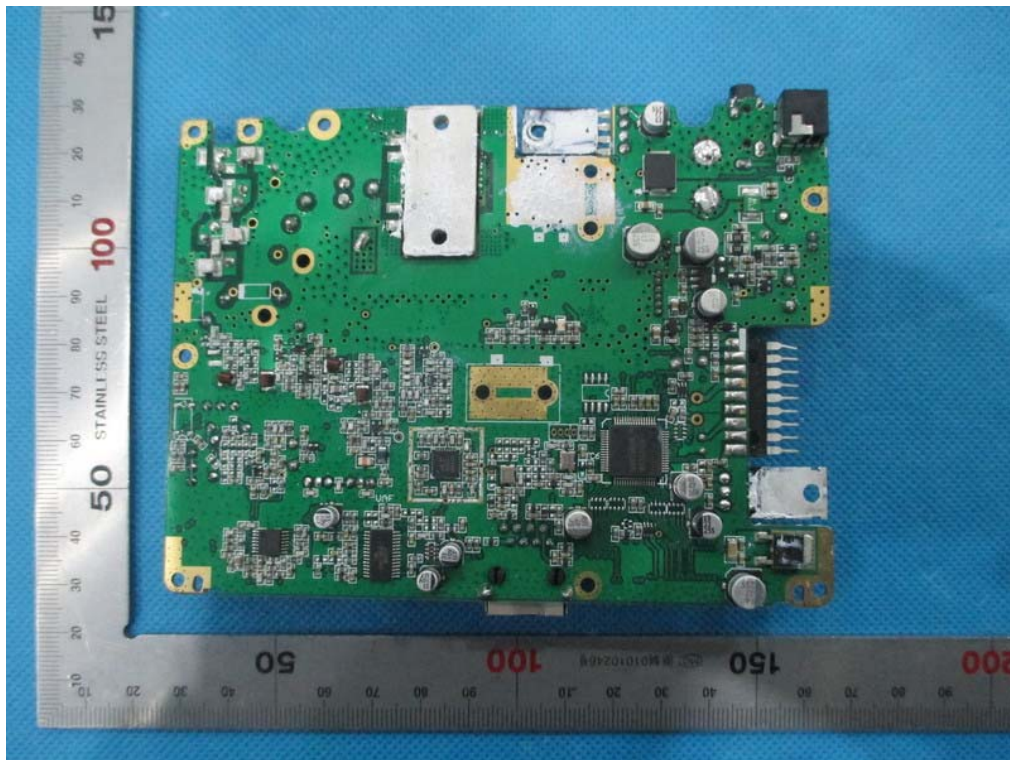
OPEN VIEW-6 OF EUT



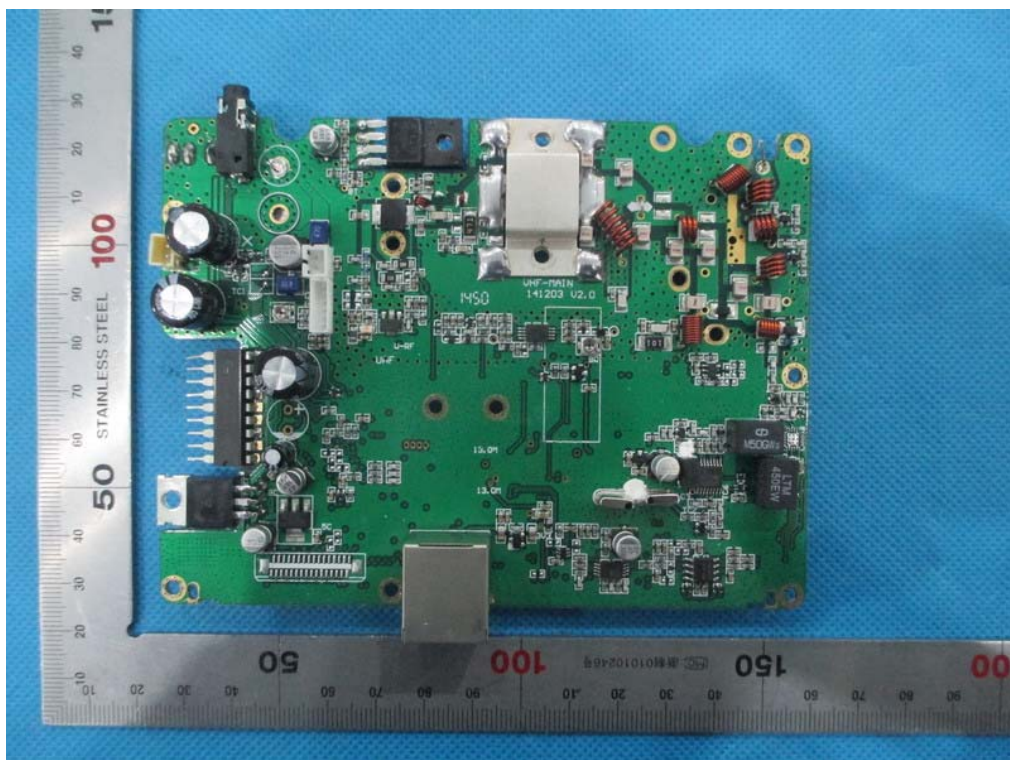
OPEN VIEW-7 OF EUT



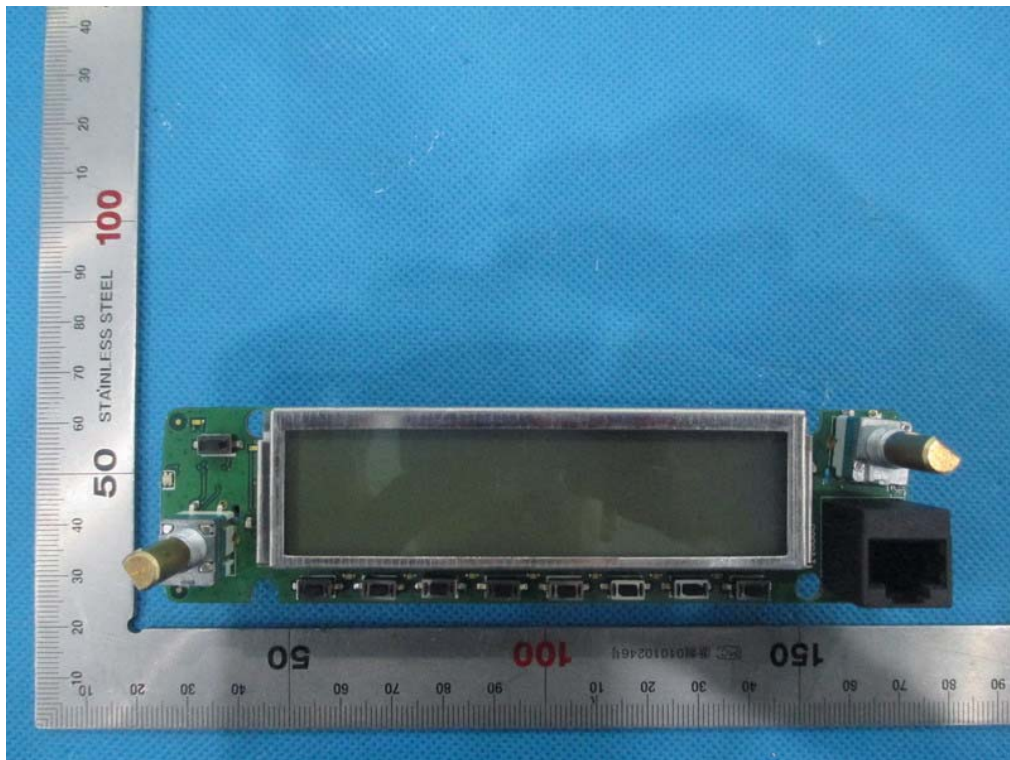
INTERNAL VIEW-1 OF EUT



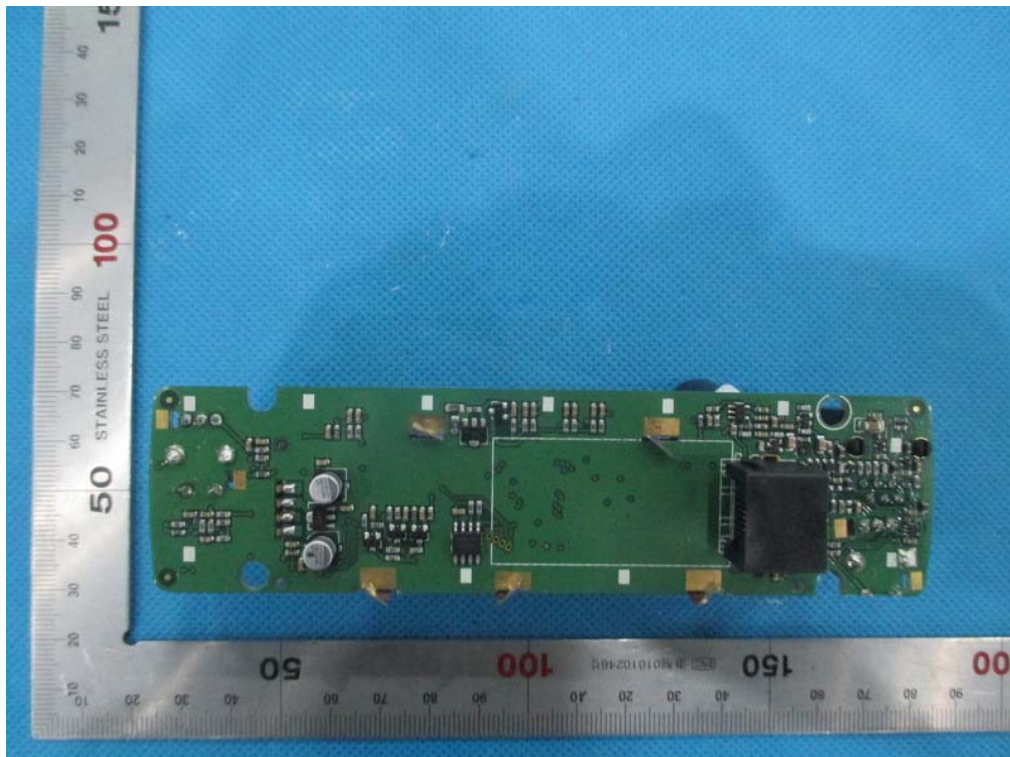
INTERNAL VIEW-2 OF EUT



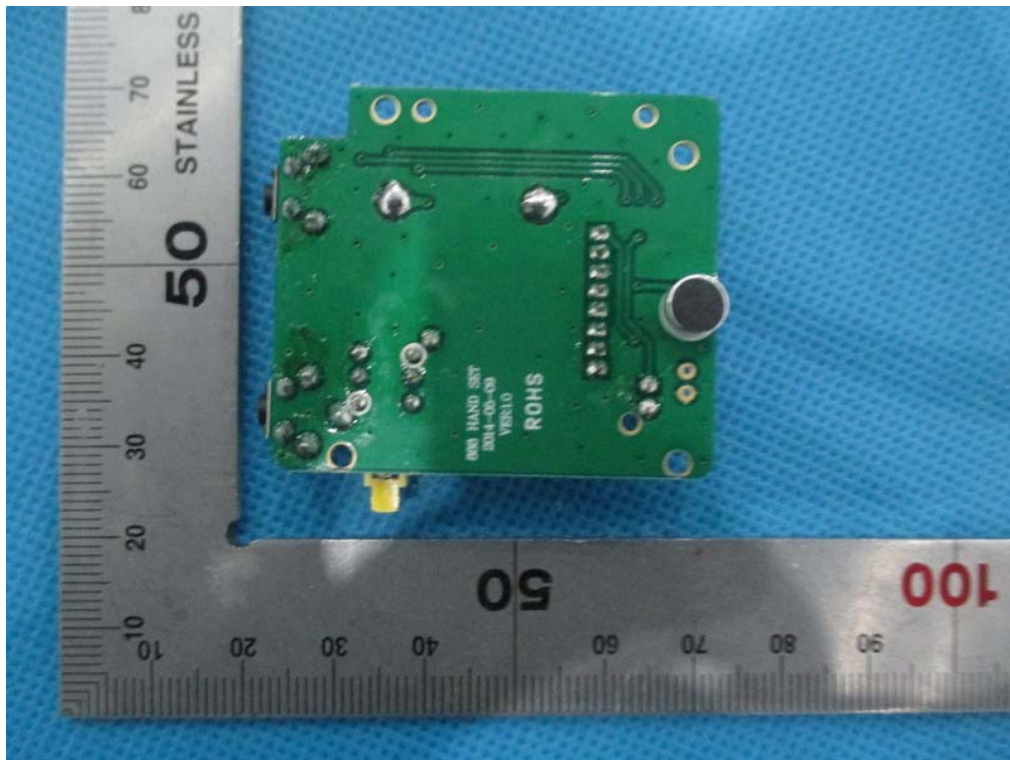
INTERNAL VIEW-3 OF EUT



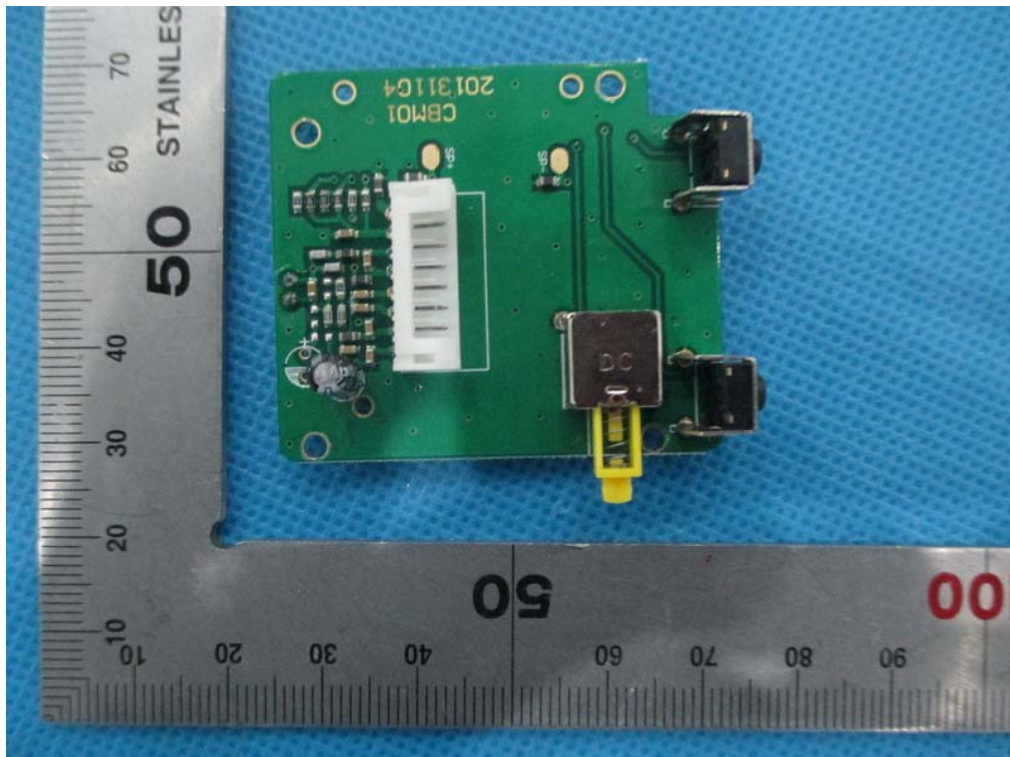
INTERNAL VIEW-4 OF EUT



INTERNAL VIEW-5 OF EUT



INTERNAL VIEW-6 OF EUT



-----END OF REPORT-----