

WARNING:
Not intended for children under 3
DO NOT STRIKE PERSONS, ANIMALS OR OBJECTS



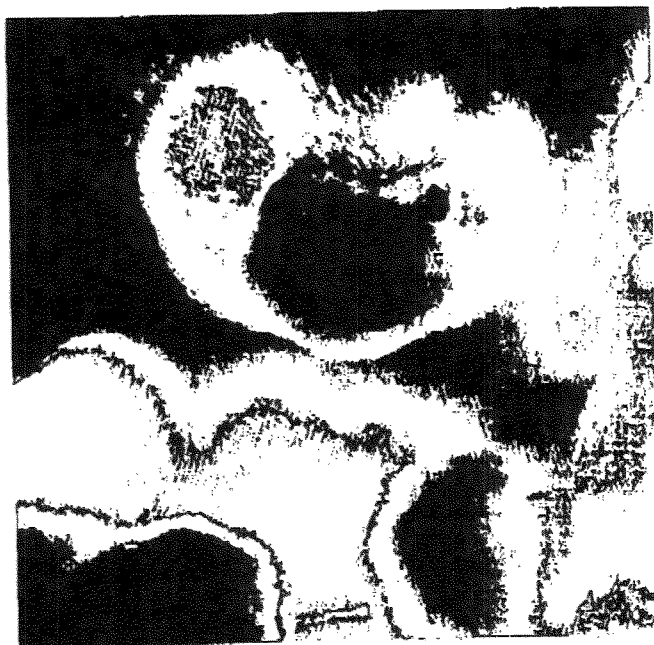
Complies with
Toy Safety
Standard
ASTM F963



WARNING:

All rubber bands and wire ties, as well as tags, are not parts of this toy, and should be discarded for your child's safety. Colors and contents may vary from those shown on package.

Printed in China

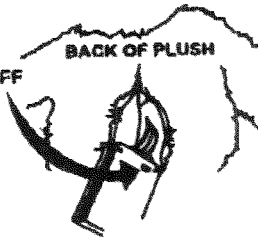


glo-e™ RAINBOW FRIENDS MAGIC WAND

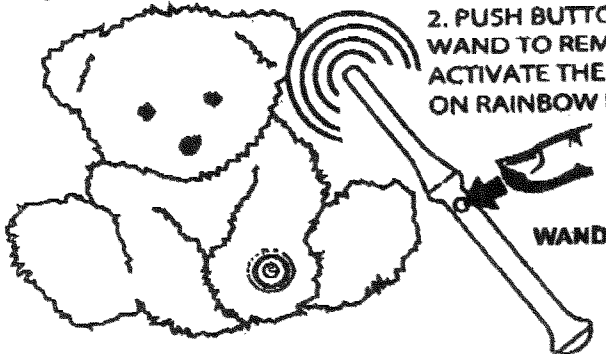
TO OPERATE THE RAINBOW PLUSH

TURN ON THE PLUSH, REMOVE THE BATTERY CASE FROM THE BATTERY POUCH. SLIDE THE ON/OFF SWITCH TO THE ON POSITION. REINSERT THE BATTERY BOX INTO THE POUCH.

1. REMOVE PULL TAB ON WAND



2. PUSH BUTTON ON WAND TO REMOTELY ACTIVATE THE SWITCH ON RAINBOW PLUSH



MAGICALLY TURN ON THE PLUSH AND SWITCH FROM LIGHT SHOW TO LIGHT SHOW WITH EACH PUSH OF THE BUTTON. AFTER THE FIFTH SHOW THE PLUSH WILL TURN OFF.

THE LIGHT IN THE WAND WILL TURN OFF AFTER A FEW SECONDS.

THE MAGIC WAND WILL ONLY WORK WITH 5 SHOW, RAINBOW BEARS, MONKEYS, AND DOGS. THE WAND CAN BE USED AS A REMOTE ON/OFF SWITCH FOR THE glo-e™ MAGIC COLOR GLO PLAY CASTLE.

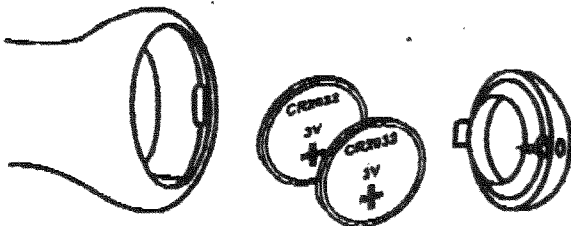
For Questions and Comments please call:

1 800 225 9319

www.glo-e.com

BATTERY INFORMATION

TO REPLACE THE BATTERIES, REMOVE THE SMALL SCREW FROM THE BACK OF THE WAND. REMOVE THE END CAP. REPLACE THE BATTERIES WITH 2 FRESH CR2032 BATTERIES.



Always replace used batteries with fresh Alkaline batteries. Do not mix old batteries with new, do not mix Alkaline with standard carbonzinc or rechargeable nickel cadmium batteries.

This device complies with Part 15 of FCC rules. Operation is subject to the following two conditions: (1) this device may not cause harmful interference, and (2) this device must accept any interference received, including interference that may cause undesired operation.

The changes or modifications not expressly approved by the party responsible for compliance could void the user's authority to operate the equipment.

To comply with the FCC RF exposure compliance requirements, this device and its antenna must not be co-located or operating to conjunction with any other antenna or transmitter.

LICENSED BY



© 2005 Cepia LLC. Saint Louis Missouri 63124 Made in China
U.S. and foreign patents pending