

# ***FCC TEST REPORT***

<b>Test Laboratory</b>	<b>:</b>	<b>Shenzhen Academy of Metrology and Quality Inspection EMC Laboratory Guangdong EMC Compliance Test Center</b>
<b>Site Location</b>	<b>:</b>	<b>Bldg. of Metrology &amp;Quality Inspection, Longzhu Road, Shenzhen, Guangdong, China</b>
<b>Tel</b>	<b>:</b>	<b>0086-755-26941531,26941723</b>
<b>Fax</b>	<b>:</b>	<b>0086-755-26941545</b>
<b>Email</b>	<b>:</b>	<b>emclab@sohu.com</b>

## TABLE OF CONTENTS

<b>TEST REPORT DECLARATION</b>	<b>3</b>
<b>1. TEST RESULTS SUMMARY</b>	<b>4</b>
<b>2. GENERAL INFORMATION</b>	<b>5</b>
2.1. Report information	5
2.2. Laboratory Accreditation and Relationship to Customer	5
2.3. Measurement Uncertainty	6
<b>3. PRODUCT DESCRIPTION</b>	<b>6</b>
3.1. EUT Description	6
3.2. Related Submittal(s) / Grant (s)	6
3.3. Block Diagram of EUT Configuration	6
3.4. Operating Condition of EUT	6
3.5. Special Accessories	7
3.6. Equipment Modifications	7
3.7. Support Equipment List	7
3.8. Test Conditions	7
<b>4. TEST EQUIPMENT USED</b>	<b>7</b>
4.1. Test Equipment Used to Measure Conducted Disturbance	7
4.2. Test Equipment Used to Measure Radiated Disturbance and bandwidth	7
<b>5. CONDUCTED DISTURBANCE TEST</b>	<b>8</b>
5.1. Test Standard and Limit	8
5.2. Test Procedure	8
5.3. Test Arrangement	8
5.4. Test Data	8
<b>6. RADIATED DISTURBANCE TEST</b>	<b>11</b>
6.1. Test Standard and Limit	11
6.2. Test Procedure	11
6.3. Test Arrangement	11
6.4. Test Data	12
<b>7. OCCUPIED BANDWIDTH</b>	<b>14</b>
7.1. Test Standard and Limit	14
7.2. Test Procedure	14
7.3. Test Arrangement	14
7.4. Test Data	14
<b>8. BAND EDGE</b>	<b>17</b>
8.1. Test Standard and Limit	17
8.2. Band Edge FCC 15.249(d) Limit	17
8.3. Test Procedure	17
8.4. Test Arrangement	17
8.5. Test Data	17
<b>9. ANTENNA REQUIREMENT</b>	<b>18</b>
<b>APPENDIX I TEST PHOTO</b>	<b>19</b>
<b>APPENDIX II EUT PHOTO</b>	<b>21</b>

## TEST REPORT DECLARATION

Applicant	:	Advance Audio Concepts, Ltd.
Address	:	Suite 1206 Greenfield Tower Concordia Plaza One Science Museum Road Tsim Sha Tsui East Kowloon, Hong Kong
Manufacturer	:	Advance Audio Concepts, Ltd.
Address	:	Suite 1206 Greenfield Tower Concordia Plaza One Science Museum Road Tsim Sha Tsui East Kowloon, Hong Kong
EUT Description	:	wireless auto-tune headphones
Model Number		BL528
FCC ID Number		T3ZBK-WLHP-06-TX
Report Number		ST20060915


Test Standards:

### FCC Part 15 15.249 :2005

The EUT described above is tested by Shenzhen Academy of Metrology and Quality Inspection EMC Laboratory to determine the maximum emissions from the EUT. Shenzhen Academy of Metrology and Quality Inspection EMC Laboratory is assumed full responsibility for the accuracy of the test results. The test data, data evaluation, test procedures, and equipment configurations shown in this report were made in accordance with the procedures given in ANSI C63.4 (2003) and the energy emitted by the sample EUT tested as described in this report is in compliance with conducted and radiated emission limits of FCC Rules Part 15.249.

The test report is valid for above tested sample only and shall not be reproduced in part without written approval of the laboratory.

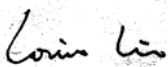
Tested by:

  
(Dewelly Yang)

Date:

2006.09.15

Checked by:

  
(Louis Lin)

Date:

2006.09.21

Approved by:

  
(Peter Lin)

Date:

2006.09.21

## 1. TEST RESULTS SUMMARY

Table 1 Test Results Summary

Test Items	FCC Rules	Test Results
Conducted Disturbance	15.207	Pass
Radiated disturbance	15.249	Pass
Occupied Bandwidth	15.249	Pass
Band Edges	15.249	Pass
Antenna Requirement	15.203	Pass

## **2. GENERAL INFORMATION**

### **2.1. Report information**

- 2.1.1. This report is not a certificate of quality; it only applies to the sample of the specific product/equipment given at the time of its testing. The results are not used to indicate or imply that they are application to the similar items. In addition, such results must not be used to indicate or imply that SMQ approves recommends or endorses the manufacture, supplier or use of such product/equipment, or that SMQ in any way guarantees the later performance of the product/equipment.
- 2.1.2. The sample/s mentioned in this report is/are supplied by Applicant, SMQ therefore assumes no responsibility for the accuracy of information on the brand name, model number, origin of manufacture or any information supplied.
- 2.1.3. Additional copies of the report are available to the Applicant at an additional fee. No third part can obtain a copy of this report through SMQ, unless the applicant has authorized SMQ in writing to do so.

### **2.2. Laboratory Accreditation and Relationship to Customer**

The testing report were performed by the Shenzhen Academy of Metrology and quality Inspection EMC Laboratory (Guangdong EMC compliance testing center), in their facilities located at Bldg. of Metrology & Quality Inspection, Longzhu Road, Nanshan District, Shenzhen, Guangdong, China. At the time of testing, Laboratory is accredited by the following organizations:

China National Accreditation Committee for Laboratories (**CNAL**) accredits the Laboratory for conformance to FCC standards, EMC international standards and EN standards. The Registration Number is L0579.

The Laboratory is listed in the United States of American Federal Communications Commission (**FCC**), and the registration number are **97379**(open area test site) and **274801**(semi anechoic chamber).

The Laboratory is listed in Voluntary Control Council for Interference by Information Technology Equipment (**VCCI**), and the registration number are **R-1974**(open area test site) , **R-1966**(semi anechoic chamber), **C-2117**(mains ports conducted interference measurement) and **T-180**(telecommunication ports conducted interference measurement).

The Laboratory is registered to perform emission tests with Industry Canada (**IC**), and the registration number is **IC4174**.

**TUV Rhineland** accredits the Laboratory for conformance to IEC and EN standards, the registration number is **E2024086Z02**.

Measurement Uncertainty

### 2.3. Measurement Uncertainty

Conducted Disturbance : 9kHz~30MHz 3.5dB

Radiated Disturbance: 30MHz~1000MHz 4.5dB  
1GHz~18GHz 4.6dB

## 3. PRODUCT DESCRIPTION

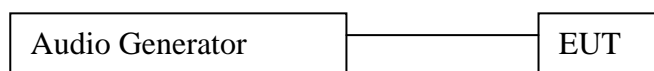
### 3.1. EUT Description

Description : wireless auto-tune headphones  
Manufacturer : Advance Audio Concepts,Ltd.  
Model Number : BL528  
Adapter:  
M/N:KU1B-090-0200D  
Input Power : Input:AC120V 60Hz 6VA  
Output:DC9V 200mA  
Operate Frequency : 902.6MHz 903.4MHz 904.2MHz  
Modulation Frequency Modulation  
Antenna Designation : Non-User Replaceable (Fixed)

### 3.2. Related Submittal(s) / Grant (s)

This submittal(s) (test report) is intended for FCC ID: T3ZBK-WLHP-06-TX filing to comply with Section 15.249 of the FCC Part 15, Subpart C Rules.

### 3.3. Block Diagram of EUT Configuration



### 3.4. Operating Condition of EUT

Mode 1: 902.6MHz TX

Mode 2:904.2MHz TX

The Transmitter was operated in the normal operating mode(input 1kHz signal 1V ).

### 3.5. Special Accessories

Not available for this EUT intended for grant.

### 3.6. Equipment Modifications

Not available for this EUT intended for grant.

### 3.7. Support Equipment List

Audio Generator:  
M/N: AD-203D  
S/N: SB3612  
Manufacturer: KENWOOD

### 3.8. Test Conditions

Date of test: Sep.08,2006  
Date of EUT Receive: Sep.11-12,2006  
Temperature: 24-25 °C  
Relative Humidity: 53-56%

## 4. TEST EQUIPMENT USED

### 4.1. Test Equipment Used to Measure Conducted Disturbance

Table 2 Conducted Disturbance Test Equipment

No.	Equipment	Manufacturer	Model No.	Last Cal.	Cal. Interval
SB2603	EMI Test Receiver	Rohde & Schwarz	ESCS30	Jan.26, 2006	1 Year
SB3321	AMN	Rohde & Schwarz	ESH2-Z5	Jan.26, 2006	1 Year
SB2604	AMN	Rohde & Schwarz	ESH3-Z5	Jan.26, 2006	1 Year
SB3612	Audio generator	KENWOOD	AD-203D	Jun.20, 2006	1 Year

### 4.2. Test Equipment Used to Measure Radiated Disturbance and bandwidth

Table 3 Radiated Disturbance Test Equipment

No.	Equipment	Manufacturer	Model No.	Last Cal.	Cal. Interval
SB3436	EMI Test Receiver	Rohde & Schwarz	ESI26	Jan.26, 2006	1 Year
SB3440	Bilog Antenna	Chase	CBL6112B	Jan.26, 2006	1 Year
SB3435	Horn Antenna	Rohde & Schwarz	HF906	Jan.26, 2006	1 Year
SB3435 /01	Amplifier(1-18GHz)	Rohde & Schwarz	---	Jan.26, 2006	1 Year
SB3612	Audio generator	KENWOOD	AD-203D	Jun.20, 2006	1 Year

## 5. CONDUCTED DISTURBANCE TEST

### 5.1. Test Standard and Limit

#### 5.1.1. Test Standard

FCC Part 15:2005

#### 5.1.2. Test Limit

Table 4 Conducted Disturbance Test Limit (Class B)

Frequency	Maximum RF Line Voltage (dB $\mu$ V)	
	Quasi-peak Level	Average Level
150kHz~500kHz	66 ~ 56 *	56 ~ 46 *
500kHz~5MHz	56	46
5MHz~30MHz	60	50

- Decreasing linearly with logarithm of the frequency
- The lower limit shall apply at the transition frequency.

### 5.2. Test Procedure

The EUT is put on a table of non-conducting material that is 80cm high. The vertical conducting wall of shielding is located 40cm to the rear of the EUT. The power line of the EUT is connected to the AC mains through a Artificial Mains Network (A.M.N.). A EMI test receiver (R&S Test Receiver ESCS30) is used to test the emissions form both sides of AC line. According to the requirements in Section 7 and 13 of ANSI C63.4-2003. Conducted emissions from the EUT measured in the frequency range between 0.15 MHz and 30MHz using CISPR Quasi-Peak and average detector mode. The bandwidth of EMI test receiver is set at 9kHz.

### 5.3. Test Arrangement

The arrangement of the equipment is installed to meet the standards and operating in a manner, which tends to maximize its emission characteristics in a normal application. The detailed information refers to test picture.

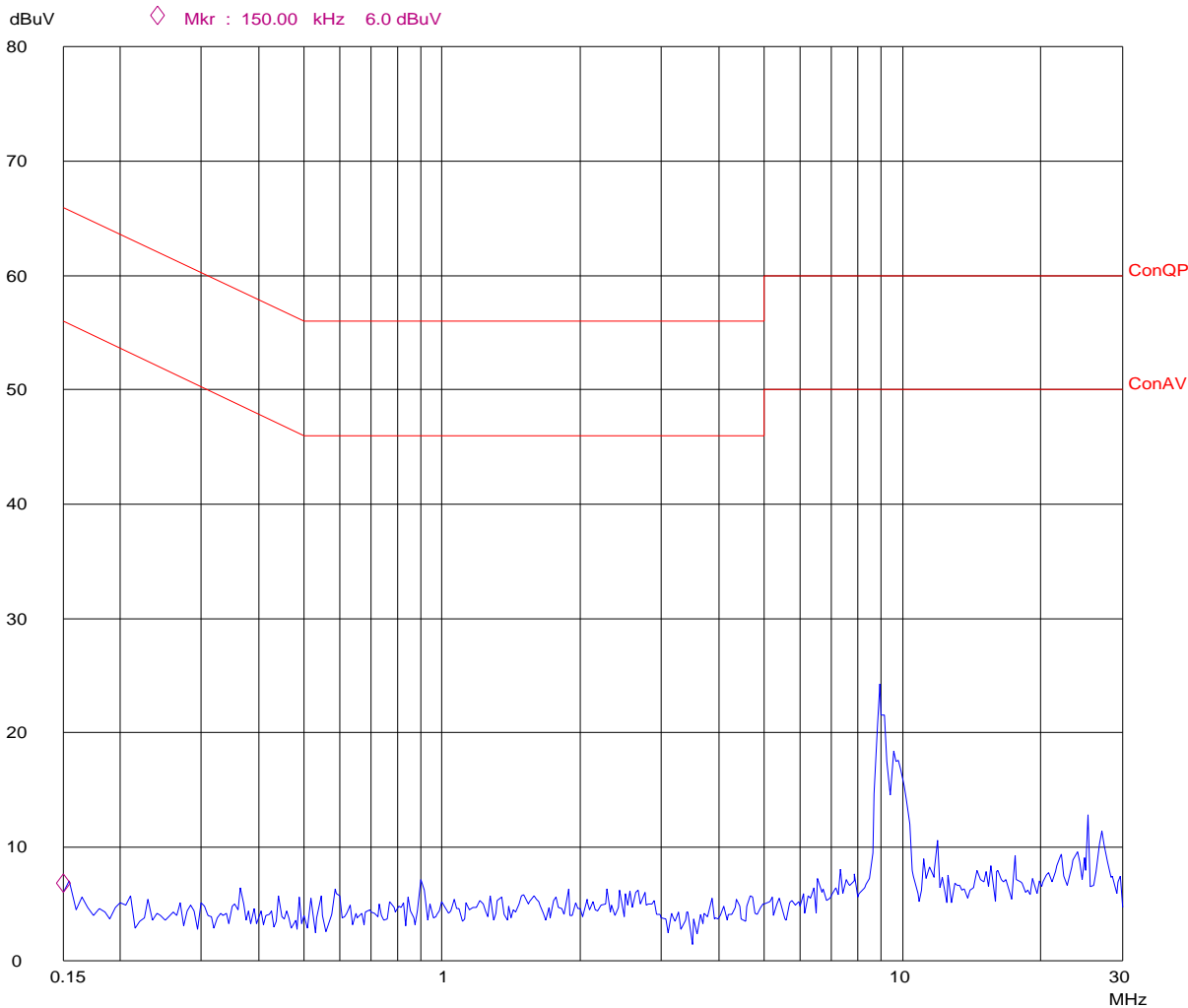
### 5.4. Test Data

The emissions don't show in below are too low against the limits. Refer to the test curves .



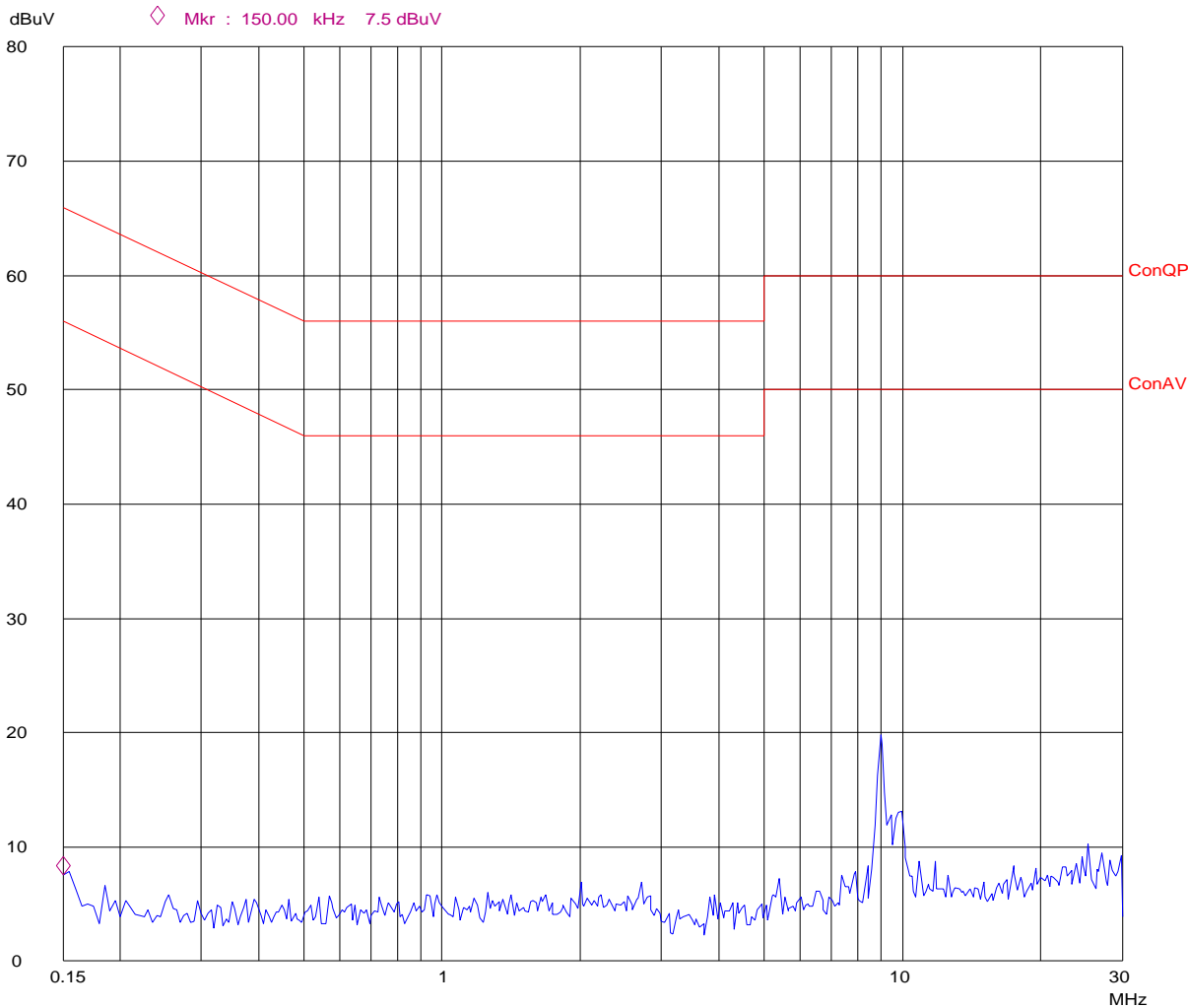
Conducted Disturbance

EUT: M/N:BL528  
Op Cond: On  
Test Spec: L  
Comment: AC 120V/60Hz



Conducted Disturbance

EUT: M/N:BL528  
Op Cond: On  
Test Spec: N  
Comment: AC 120V/60Hz



## 6. RADIATED DISTURBANCE TEST

### 6.1. Test Standard and Limit

#### 6.1.1. Test Standard

FCC Part 15:2005

#### 6.1.2. Test Limit

Table 5 Radiated Disturbance Test Limit (Class B)

FREQUENCY MHz	FIELD STRENGTHS LIMITS ( $\mu\text{V/m}$ )	FIELD STRENGTHS LIMITS dB ( $\mu\text{V/m}$ )
Fundamental	50000	94.0
Harmonics	500	54.0
30 ~ 88	100	40.0
88 ~ 216	150	43.5
216 ~ 960	200	46.0
960 ~	500	54.0

\* The lower limit shall apply at the transition frequency.

\* The test distance is 3m.

### 6.2. Test Procedure

The EUT is placed on a turntable, which is 0.8 meter above ground. The turntable can rotate 360 degrees to determine the position of the maximum emission level. EUT is set 3 meters away from the receiving antenna, which is mounted on an antenna tower. The antenna can move up and down between 1 to 4 meters to find out the maximum emission level. Broadband antenna is used as a receiving antenna. Both horizontal and vertical polarization of the antenna is set on test. In order to find out the max. emission, the relative positions of this hand-held transmitter(EUT) was rotated through three orthogonal axes according to the requirements in Section 8 and 13 of ANSI C63.4-2003.

The RBW of the EMI test receiver is :

30~1000MHz 120KHz

1000-18000MHz 1MHz

### 6.3. Test Arrangement

The arrangement of the equipment is installed to meet the standards and operating in a manner, which tends to maximize its emission characteristics in a normal application. The detailed information refers to test picture.

## 6.4. Test Data

Note: 1. Emission level(dBuV/m)=Reading Value(dBuV) + Correction Factor(dB/m)+ Antenna Factor (dB/m)

2. Correction Factor(dB/m) = Cable Factor (dB)+Amplifier Factor(dB)

3. The other emission levels were very low against the limit.

Table 6 Radiated Disturbance Test Data (FCC Part15)

Model number:BL528 Test Mode:ch 1							
Frequency (MHz)	Polarization	Reading Value (dB $\mu$ V)	Correction Factor (dB)	Antenna Factor (dB/m)	Emission Level dB ( $\mu$ V/m)	Limits dB ( $\mu$ V/m)	Note
902.581	H	46.9	5.1	20.7	72.7	94.0	Fundamental QP
902.587	V	45.6	5.1	20.7	71.4	94.0	Fundamental QP
1805.190	H	59.5	-32.3	27.2	54.4	74.0	Harmonics PK
1805.190	H	58.2	-32.3	27.2	53.1	54.0	Harmonics AV
1805.190	V	64.7	-32.3	27.2	59.6	74.0	Harmonics PK
1805.190	V	64.1	-32.3	27.2	59.0	54.0	Harmonics AV
2707.810	H	49.4	-31.8	29.9	47.5	74.0	Harmonics PK
2707.810	H	47.0	-31.8	29.9	45.1	54.0	Harmonics AV
2707.810	V	47.4	-31.8	29.9	45.5	74.0	Harmonics PK
2707.810	V	45.0	-31.8	29.9	43.1	54.0	Harmonics AV
4512.966	H	56.5	-31.0	33.3	58.8	74.0	Harmonics PK
4512.966	H	55.2	-31.0	33.3	57.5	54.0	Harmonics AV
4512.966	V	52.5	-31.0	33.3	54.8	74.0	Harmonics PK
4512.966	V	50.4	-31.0	33.3	52.7	54.0	Harmonics AV

Table 6 Radiated Disturbance Test Data (FCC Part15)

Model number:BL528 Test Mode:ch 3							
Frequency (MHz)	Polarization	Reading (dB $\mu$ V)	Cable Loss R1 (dB)	Antenna Factor (dB/m)	Level dB ( $\mu$ V/m)	Limits dB ( $\mu$ V/m)	Note
904.211	H	47.9	5.1	20.7	73.7	94.0	Fundamental QP
904.211	V	45.6	5.1	20.7	71.4	94.0	Fundamental QP
1808.421	H	60.0	-32.3	27.2	54.9	74.0	Harmonics PK
1808.421	H	58.9	-32.3	27.2	53.8	54.0	Harmonics AV
1808.421	V	66.1	-32.3	27.2	61.0	74.0	Harmonics PK
1808.421	V	65.2	-32.3	27.2	60.1	54.0	Harmonics AV
2712.622	H	51.4	-31.8	29.9	49.5	74.0	Harmonics PK
2712.622	H	49.2	-31.8	29.9	47.3	54.0	Harmonics AV
2712.622	V	50.4	-31.8	29.9	48.5	74.0	Harmonics PK
2712.622	V	48.7	-31.8	29.9	46.8	54.0	Harmonics AV
3616.845	H	56.8	-31.4	32.4	57.8	74.0	Harmonics PK
3616.845	H	55.5	-31.4	32.4	56.5	54.0	Harmonics AV
3616.845	V	52.8	-31.4	32.4	53.8	74.0	Harmonics PK
3616.845	V	51.1	-31.4	32.4	52.1	54.0	Harmonics AV

## **7. OCCUPIED BANDWIDTH**

### **7.1. Test Standard and Limit**

#### 7.1.1. Test Standard

FCC Part 15:2005

### **7.2. Test Procedure**

1. The EUT was placed on a turn table which is 0.8m above ground plane.
2. Set EUT as normal operation
3. Set EMI test receiver (ESIB 26) Center Frequency = fundamental frequency, RBW=100kHz, VBW= 1MHz, Span=2MHz.
4. Set EMI test receiver (ESIB 26) Max hold. Mark peak, -26dB.

### **7.3. Test Arrangement**

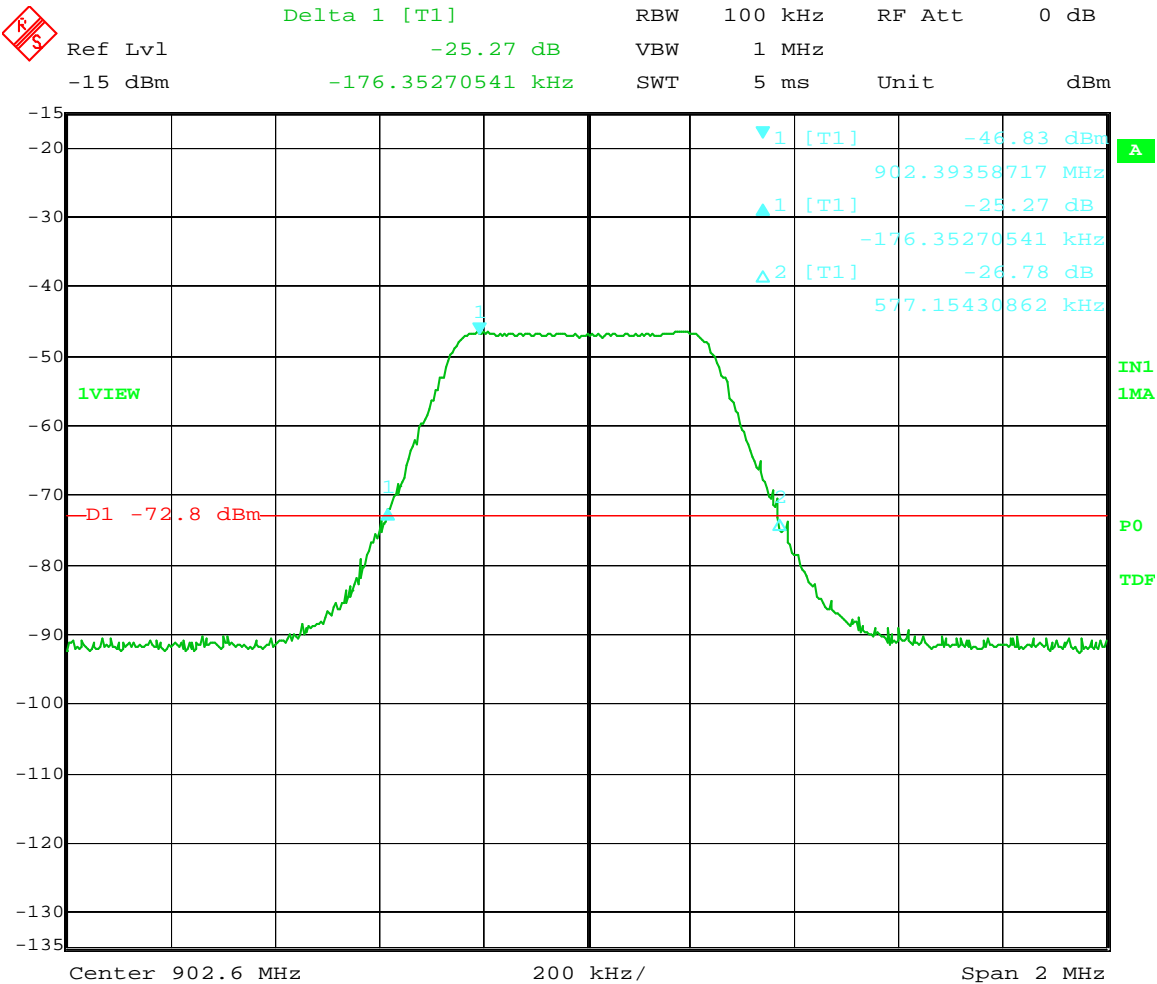
The arrangement of the equipment is installed to meet the standards and operating in a manner, which tends to maximize its emission characteristics in a normal application. The detailed information refers to test picture.

### **7.4. Test Data**

Ch1 26dB bandwidth = 753.4 kHz

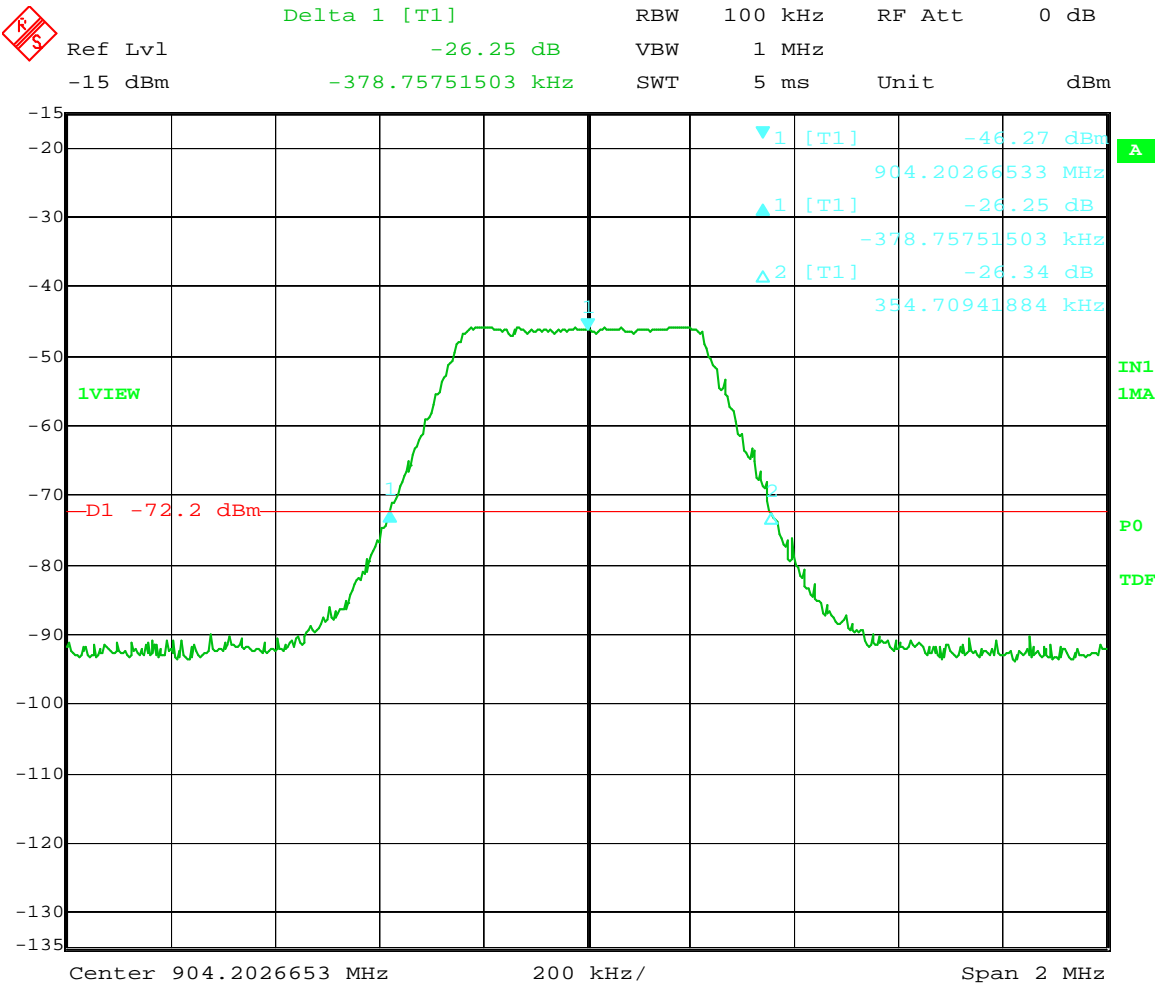
Ch3 26dB bandwidth = 733.4 kHz

Ch1



Date: 11.SEP.2006 21:05:01

Ch3



Date: 11.SEP.2006 21:03:16



## **8. BAND EDGE**

### **8.1. Test Standard and Limit**

#### **8.1.1. Test Standard**

FCC Part 15 15.249 :2005

### **8.2. Band Edge FCC 15.249(d) Limit**

Emission radiated outside of the specified frequency bands, except for harmonics, shall be attenuated by at least 50 dB below the level of the fundamental or to the general radiated emission limits in Section 15.209, whichever is the lesser attenuation

### **8.3. Test Procedure**

1. Check the calibration of the measuring instrument using either an internal calibrator or a known signal from an external generator.
2. Position the EUT without connection to measurement instruments. Turn on the EUT and connect its antenna terminal to measurement instrument via a low loss cable. Then set it to any one measured frequency within its operating range and make sure the instrument is operated in its linear range.
3. Measure the highest amplitude appearing on spectral display and set it as reference level. Plot the graph with marking the highest point and edge frequency.
4. Repeat above procedures until all measured frequencies were complete.

### **8.4. Test Arrangement**

The arrangement of the equipment is installed to meet the standards and operating in a manner, which tends to maximize its emission characteristics in a normal application. The detailed information refers to test picture.

### **8.5. Test Data**

All the emission is lower than 74 dB ( $\mu$  V/m).

## **9. ANTENNA REQUIREMENT**

According to Section 15.203, an intentional radiator shall be designed to ensure that no antenna other than that furnished by the responsible party shall be used with the device.

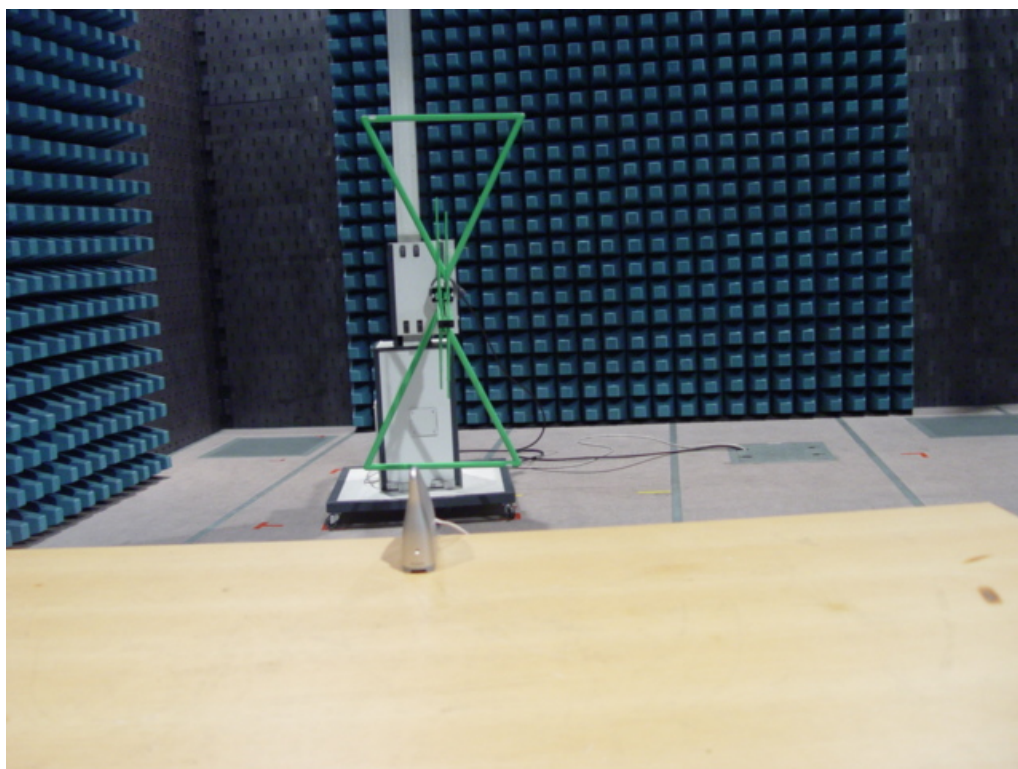
The EUT has a built in antenna which is integrated on the PCB, this is permanently attached antenna and meets the requirements of this section.

## **APPENDIX I TEST PHOTO**

**Photo 1 Conducted Emission Test**



**Photo 2 Radaited Emission Test**



## **APPENDIX II EUT PHOTO**

**Photo 1 Appearance of EUT**



**Photo 2 Appearance of EUT**

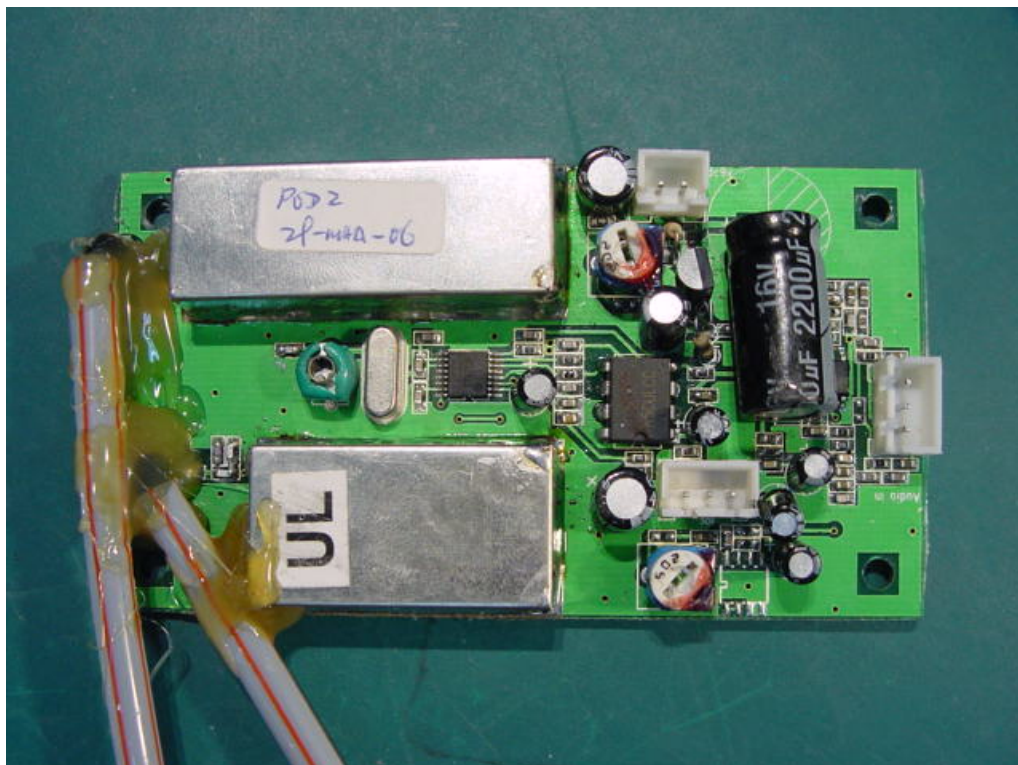




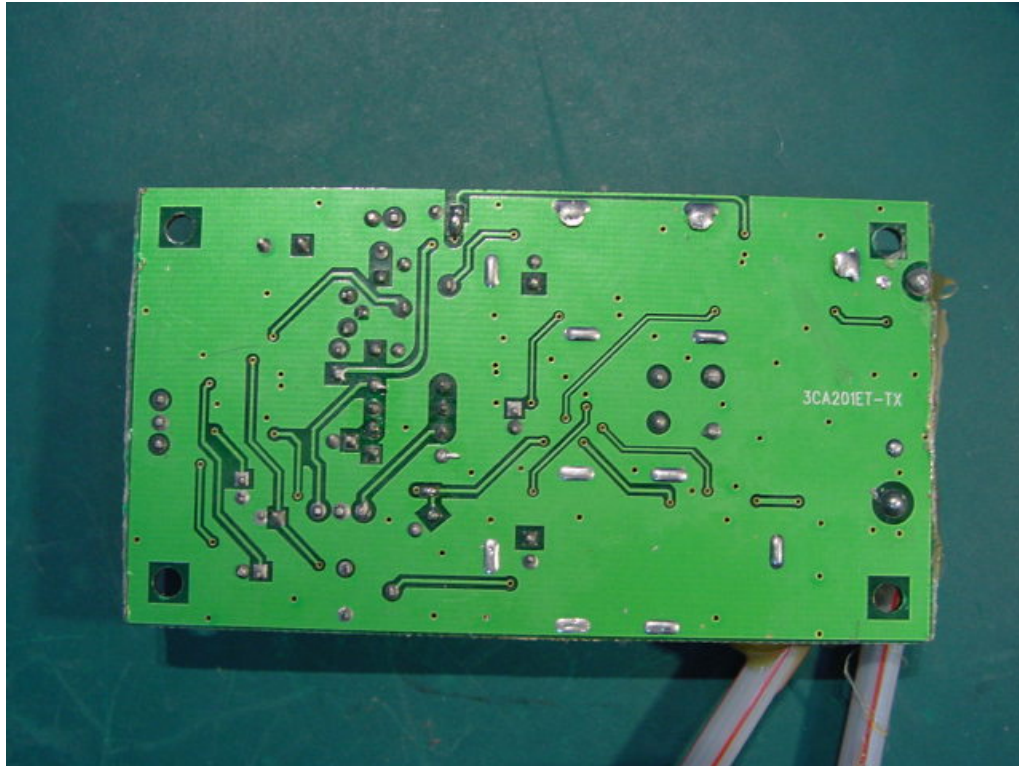
**Photo 3 Inside of EUT**



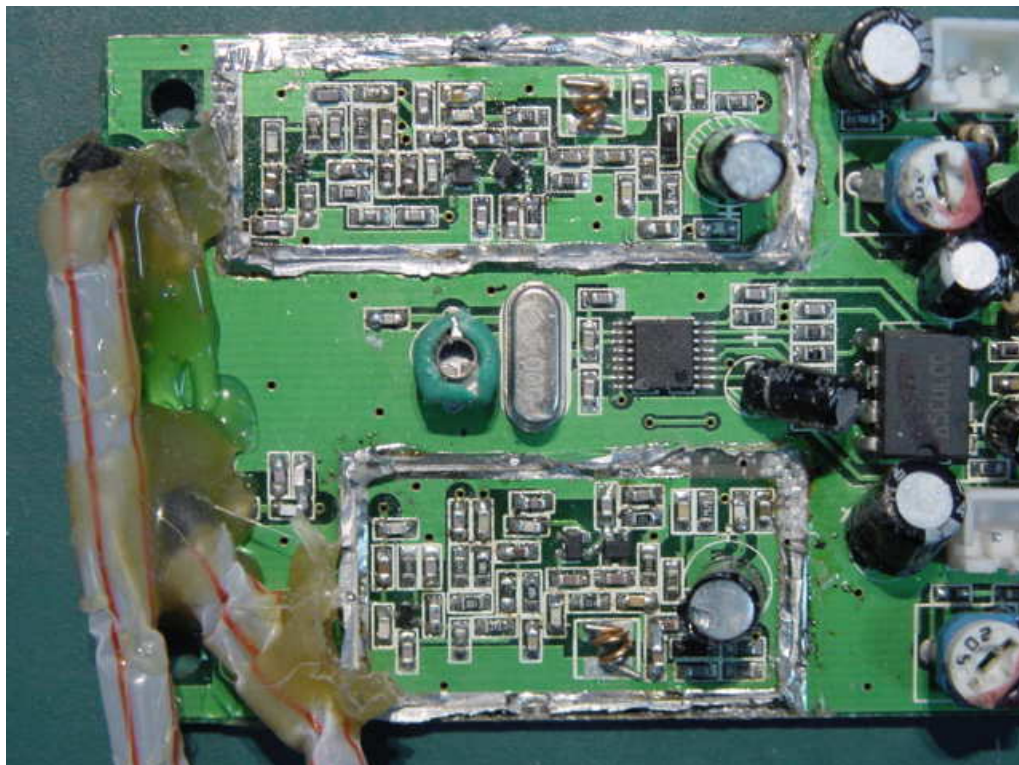
**Photo 4 Inside of EUT**



**Photo 5 Inside of EUT**



**Photo 6 Inside of EUT**





**Photo 7 Adaptor**

