

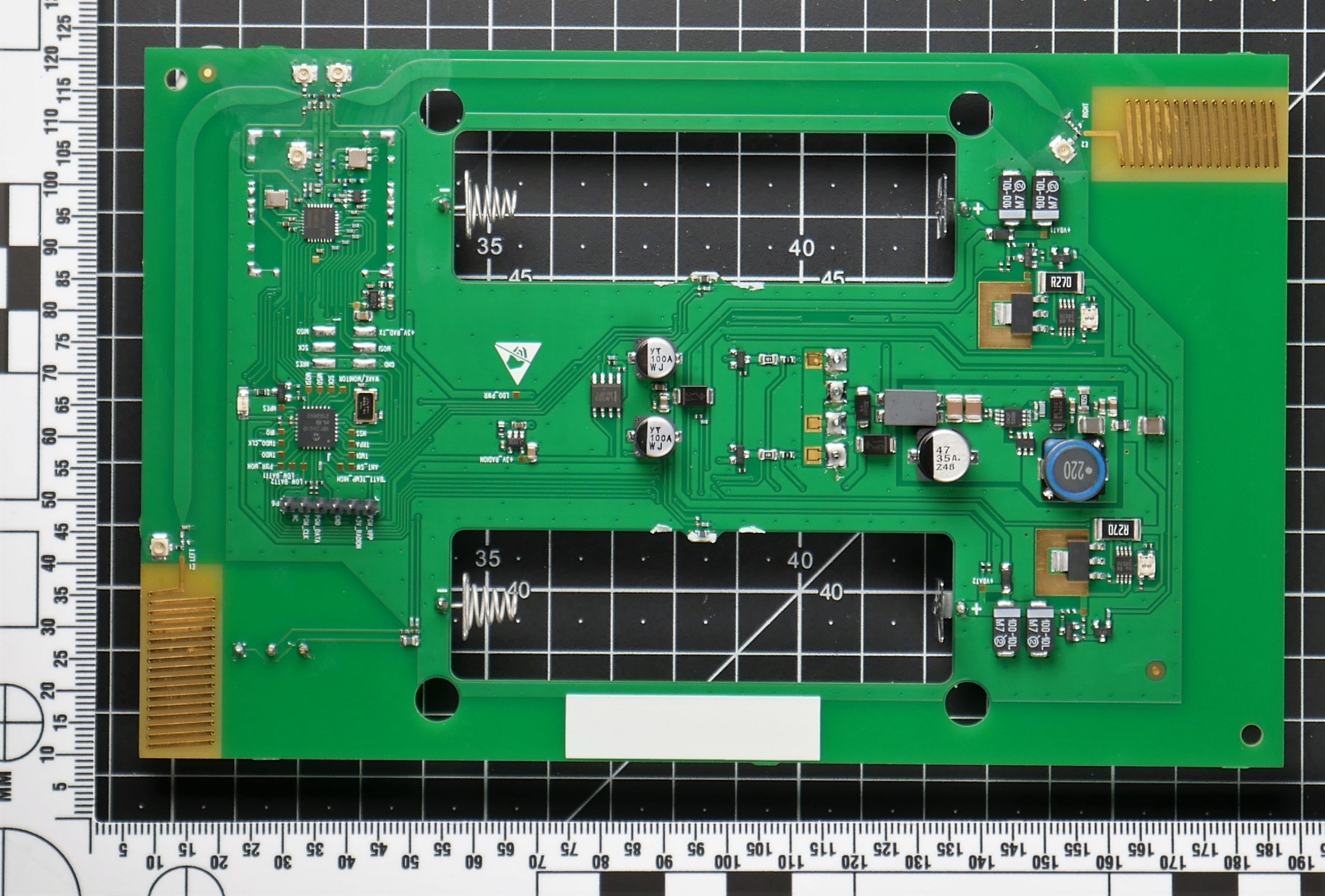
The PCB features a central microcontroller unit (MCU) with various peripheral components. Key components include:

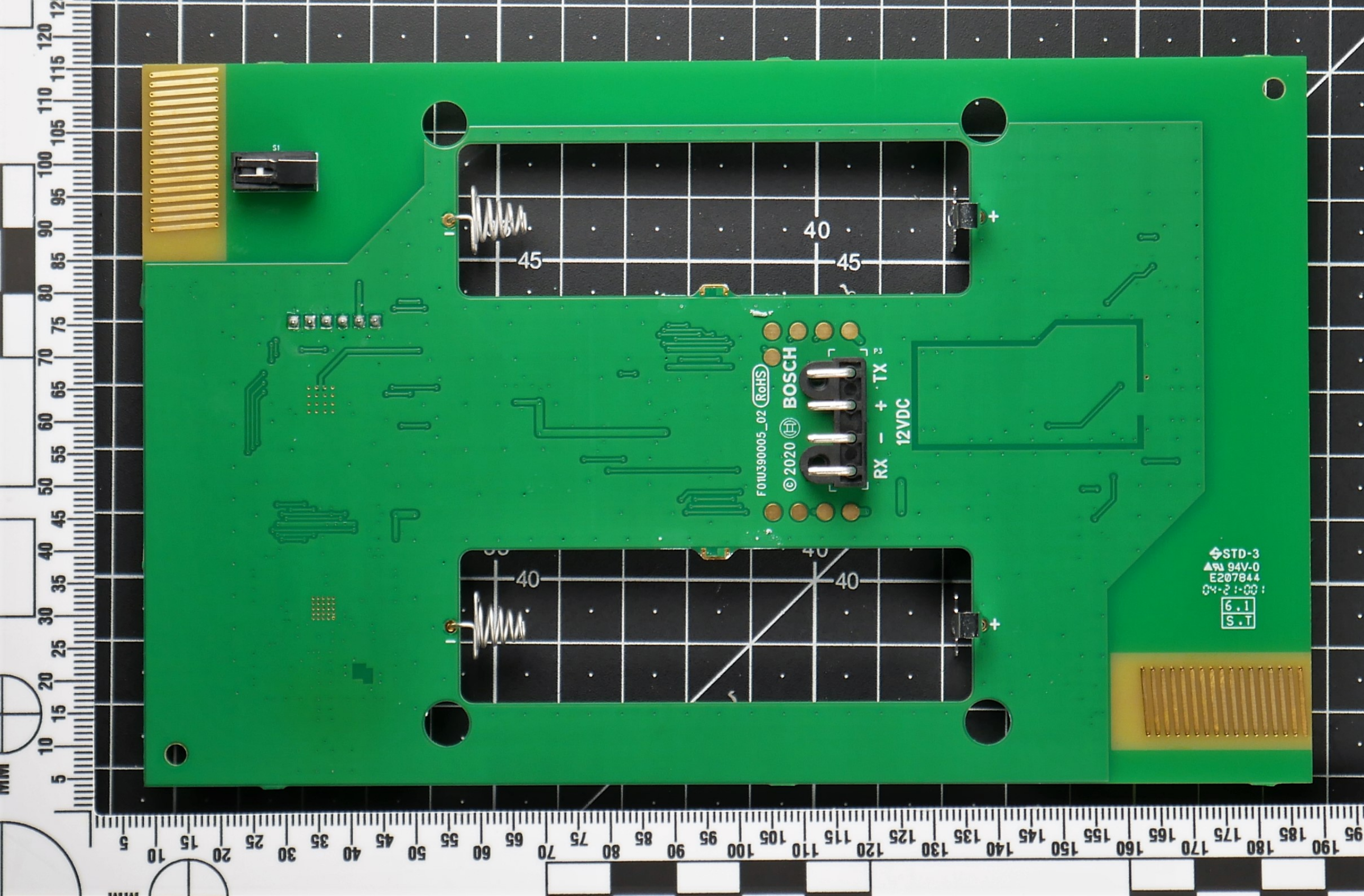
- Battery Holders:** Two large white holders are mounted horizontally, each containing a spring and a contact point.
- Capacitors:** Two electrolytic capacitors labeled "YT 100A W J" are located in the center. A blue electrolytic capacitor labeled "47 35A Z48" is on the right. Several ceramic capacitors are also present, including two labeled "100-0L M7".
- Resistors:** Two resistors labeled "R270" are located on the right side.
- Connectors:** Two gold-plated ribbon connectors are located on the left and right sides of the board.
- ICs:** A central MCU is surrounded by various support ICs, including a "VOLTAGE MONITOR" IC and a "TEMPERATURE SENSOR" IC.
- Other Components:** A "LOW BATT" indicator IC, a "VOLTAGE DIVIDER" IC, and a "TEMPERATURE SENSOR" IC are also visible.

5 10 15 20 25 30 35 40 45 50 55 60 65 70 75 80 85 90 95 100 105 110 115 120 125 130 135 140 145

5 10 15 20 25 30 35 40 45 50 55 60 65 70 75 80 85 90 95 100 105 110 115 120 125 130 135 140 145 150 155 160 165 170 175 180 185 190 195 200 205 210 215 220

50 50 45 40





F01U390005_02 (RoHS)
© 2020 BOSCH

RX - + TX
12VDC

STD-3
94V-0
E207844
04-21-00
6.1
S.T.