



Simpler Devices for a Connected World™

Label (Maui Villa 3-Button In-Wall Dimmer Model 3141)

Dimensions (.28 inches x .38 inches)



Model 3141



FCC ID: T3L-SS040
IC: 12192A-SS040

This device complies with Part 15 of the FCC rules. Operation is subject to the following two conditions: (1) This device may not cause harmful interference and (2) This device must accept any interference received, including interference that may cause undesired operation



ZigBee
Control your world

FCC Label Location (FCC & IC ID Will Be Embossed Into The Plastics as well)



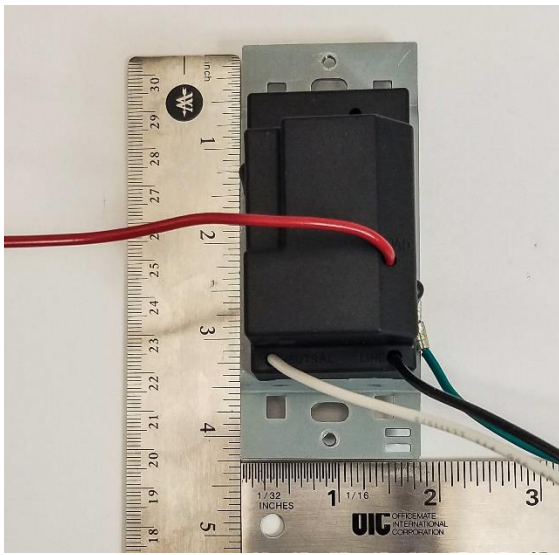


Simpler Devices for a Connected World™

Maui Dimmer EUT Top View



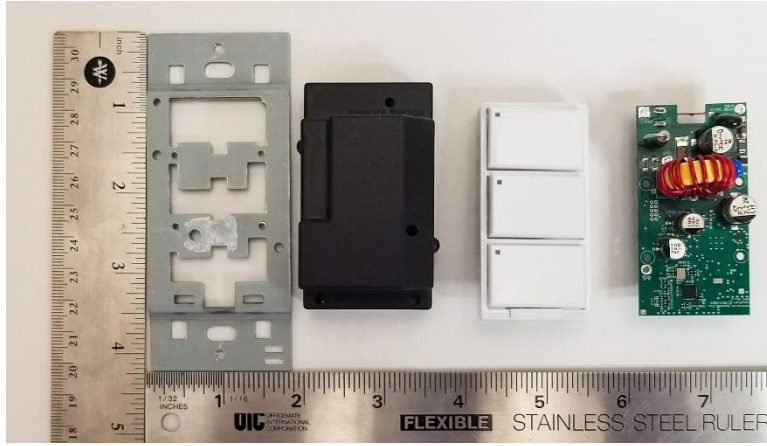
Maui Dimmer EUT Rear View



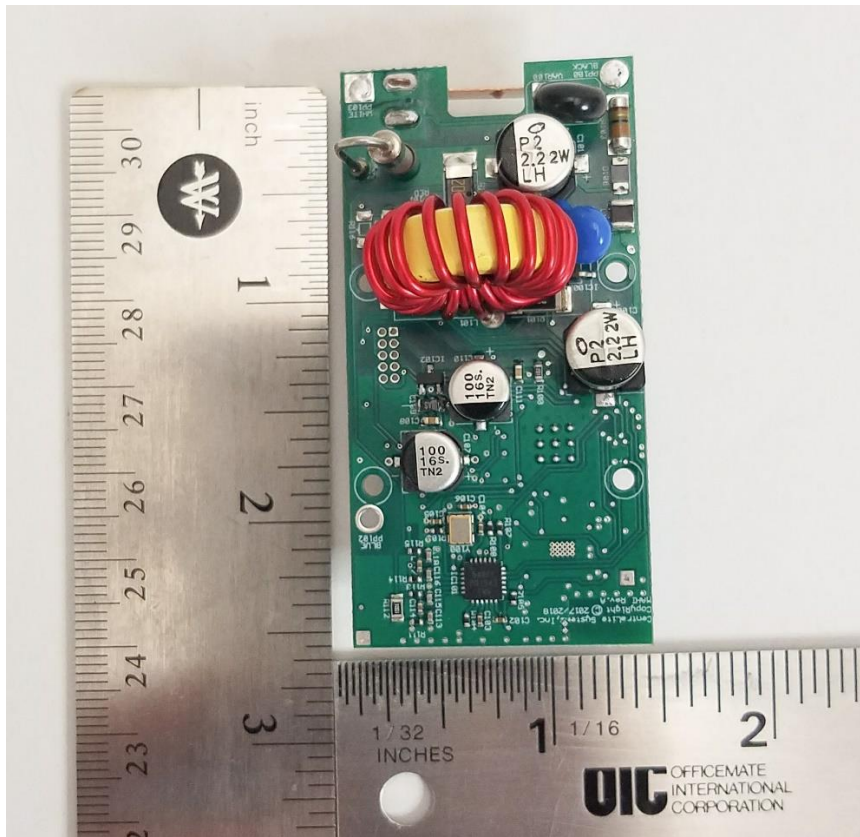


Simpler Devices for a Connected World™

Maui Dimmer EUT Open Case View



Maui Dimmer Main Board Top View





Simpler Devices for a Connected World™

Maui Dimmer Main Board Rear View

