



PlugLink-ETH-500

User's Guide

PL9671-A2

PlugLink[®]AV
by Asoka[®]

QUICKFIND LOCATOR

Contact

Information

Getting Help Table

of Contents

Installation

66-0365-01Rev.001

© 2010 Asoka USA Corporation

ALL RIGHTS RESERVED

Notice: No part of this publication may be reproduced or transmitted in any form or by any means, electronic or mechanical, including photocopying and recording, or stored in a database or retrieval system for any purpose without the express written permission of Asoka USA Corporation.

Asoka USA Corporation reserves the right to make changes to this user's guide at any time without notice and assumes no responsibility for its use. Asoka USA products and services can only be ordered under the terms and conditions of Asoka USA Corporation's applicable agreements. All of the features described in this user's guide may not be currently available. Refer to the most recent product announcement for information about feature and product availability.

This user's guide contains the most current information available at the time of publication. When new and/or revised information becomes available, this entire user's guide is updated and distributed to all registered users.

All company and product names mentioned herein are trademarks of their respective companies. Mention of third-party products is for informational purposes only and constitutes neither an endorsement nor a recommendation. Asoka USA Corporation assumes no responsibility with regard to the performance or use of these products.

Revision	Date	Description
66-0365-01Rev.001	Aug. 2010	Preliminary Release

Changes in This Revision

- Not applicable (preliminary release)

Contact Information

For more information about the PlugLink-ETH-500 or any of Asoka's other leading-edge solutions, please contact us using any of the following methods:

- **Voice calls:** We welcome your calls Monday through Friday, from 9:00 am to 5:00 pm Pacific Time at (408) 550-8167. Voice mail is available during non-business hours.
- **Email:** If you prefer, you can send information requests to our e-mail address: sales@asokausa.com.
- **Fax calls:** You can also send your requests for information to our 24-hour fax number: (408) 884-2390
- **Web site:** Our Web site contains valuable information about our products, solutions, and services. We encourage you to visit us at <http://www.asokausa.com>.

Getting Help

Asoka USA backs its products with unparalleled customer service and technical support for our valued customers.

Customer Service

Customer service, the customer-satisfaction arm of Asoka USA, is available Monday through Friday, from 9:00 am to 5:00 pm Pacific Time, by calling (408) 550-8167 or emailing custserv@asokausa.com.

Technical Support

Technical support is available Monday through Friday, from 6:00 am to 6:00 pm Pacific Time, by calling (408) 550-8173 or through email at support@asokausa.com.

Please provide the following information about the problem:

- Product name, model number, part number (if applicable) and serial number
- System configuration, including a description of the devices connected to your 9671
- The circumstances surrounding the error or failure
- A detailed description of the problem and what has been done to try to solve it

Table of Contents

1	Simple Installation	5
	Package Contents	5
	Types of Connections.	5
	Simple Connection (Peer to Peer)	6
	Simple Broadband Connection.	6
	Other Connections.	7
	Finding a Suitable Location.	7
	Installing the Hardware	7
2	Advanced Configuration (Expert Users Only)	8
	Installing the Software.	8
3	Network Management	13
	Viewing Device Information	13
	Changing Names and Encryption Keys.	14
	Resetting and Upgrading the PlugLink AV	15
	Manually Resetting Firmware and NID.	16
	Prioritizing Network Traffic.	17
	Viewing Network Statistics	18
	Viewing Ethernet and HomePlug Connection	18
	Viewing Connection Speed	19
	Statistics Subscreen.	19
	Scanning Devices.	20
4	Troubleshooting.	21
A	Specifications	23
B	Components.	25
D	Warranty	30
E	FCC Notice	32

Simple Installation

Congratulations on your purchase of the PlugLink-ETH-500 !

This adapter allows you to network your home or office by plugging directly into an electrical outlet. With your PlugLink-ETH-500 , you can easily share your high-speed Internet, mp3s, video, and gaming throughout the home or office.

This manual describes how to connect your PlugLink-ETH-500 to a PC or cable/DSL router.

Package Contents

- PlugLink-ETH-500(PL9671-A2)
- 6-foot Ethernet cable
- Quick Installation Guide
- Installation Resource CD (for advanced users only)
- Warranty and Support Information Card



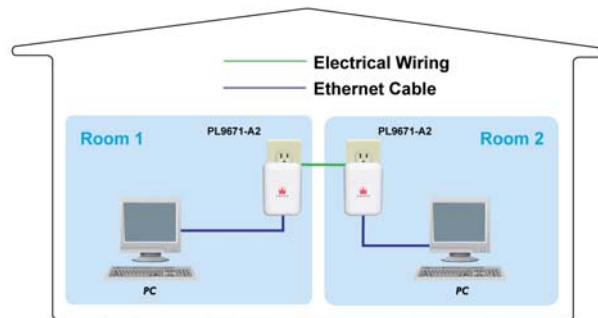
If any of the parts are incorrect, missing, or damaged, contact the retailer where you made your purchase. Keep the carton, including the original packing materials, in case you need to return the unit for repair.

Types of Connections

This section describes what you need to do to before installing the PlugLink-ETH-500G. You can set up a home or an office network or compliment your existing network by connecting to any device with a 10BaseT/100BaseT Ethernet-capable device.

Simple Connection (Peer to Peer)

To share a simple connection between computers, attach one PL9671-A2 device to each computer.

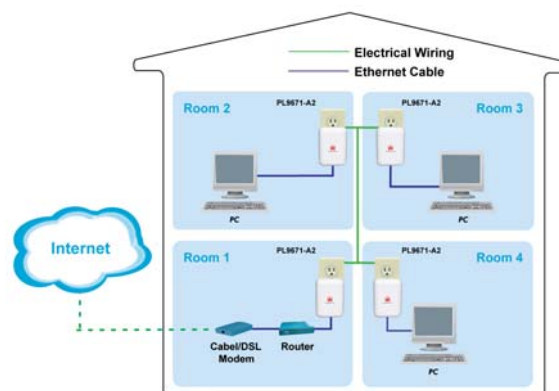


NOTE: Do not connect the PlugLink-ETH-500 into a power strip, extension cord, un-interruptible power supply (UPS), or surge protector. This may prevent the unit from working properly or degrade the network performance.

Simple Broadband Connection

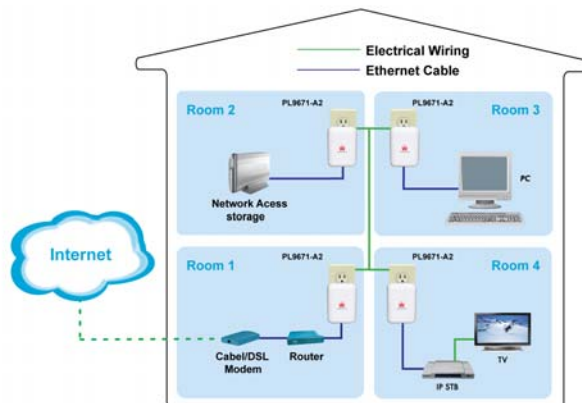
The following items are needed to share a Broadband connection with computers:

- ◆ One (1) PL9671-A2 device attached to a standard cable, DSL, or wireless router;
- ◆ One (1) PL9671-A2 device attached to each computer;



Other Connections

You can also use the PlugLink-ETH-500 with other Ethernet enabled devices, such as IP Cameras, IP set top box, game consoles, etc.



Finding a Suitable Location

Find a suitable location to install your PlugLink-ETH-500 . Where you install the units can affect their performance. Find a location that is:

- Acceptable temperature and humidity ranges.
- Free of strong electromagnetic field generators (such as motors), vibration, dust, and direct exposure to sunlight.
- An electrical outlet for your PlugLink-ETH-500 . Outlet must be is within six feet (1.82 meters) of the device you are connecting to.

Installing the Hardware

Connect each of your PlugLink-ETH-500 .

1. Connect the unit into a nearby wall outlet (Do not plug the adapter into a power strip).
2. Connect the enclosed Ethernet cable to the Ethernet port of the unit.
3. Connect the other end of the cable to the Ethernet port of the PC or device.



Congratulations! You have completed the installation of the 9671 for normal use.

Advanced Configuration (Expert Users Only)

This chapter provides information on installing and setting up the PlugLink-ETH-500.



NOTE: Do not connect the PlugLink-ETH-500 into a power strip, extension cord, un-interruptible power supply (UPS), or surge protector. This may prevent the unit from working properly or degrade the network performance.

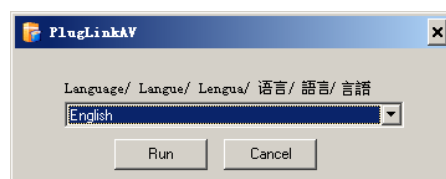
Installing the Software

Following are software installation procedures for advanced users.



NOTE: Software installation is not required for normal use. The utility is used to change the security settings and view information about the network.

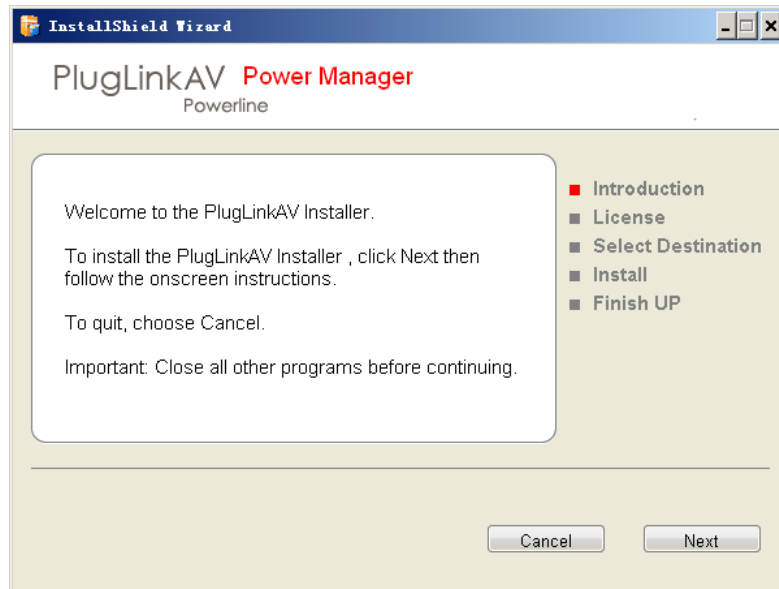
1. Insert the enclosed Installation Resource CD into your CD-ROM drive. If the PlugLink-ETH-500 Installation Utility does not appear within 30 seconds, select your CD-ROM drive and double-click the **Setup.exe** icon to start the Installation Utility.
2. Select the language preference, and click the **Run** button.



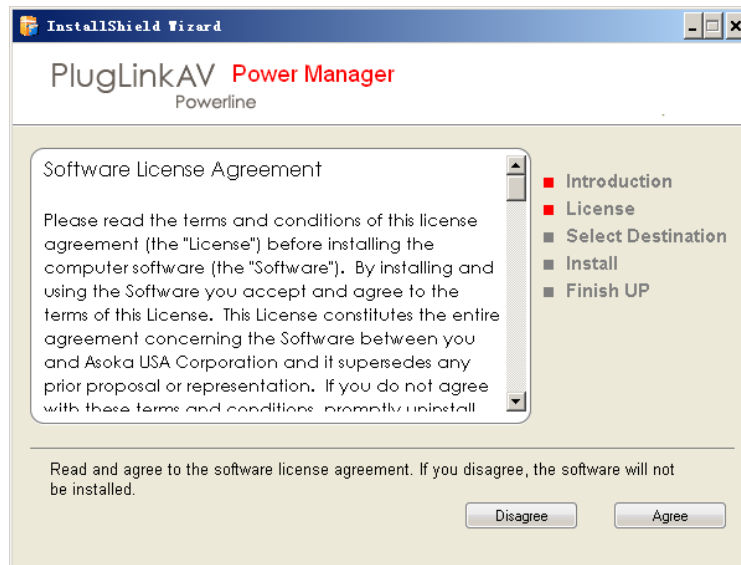
3. In the Start screen, click **Install Driver** to start the installation.



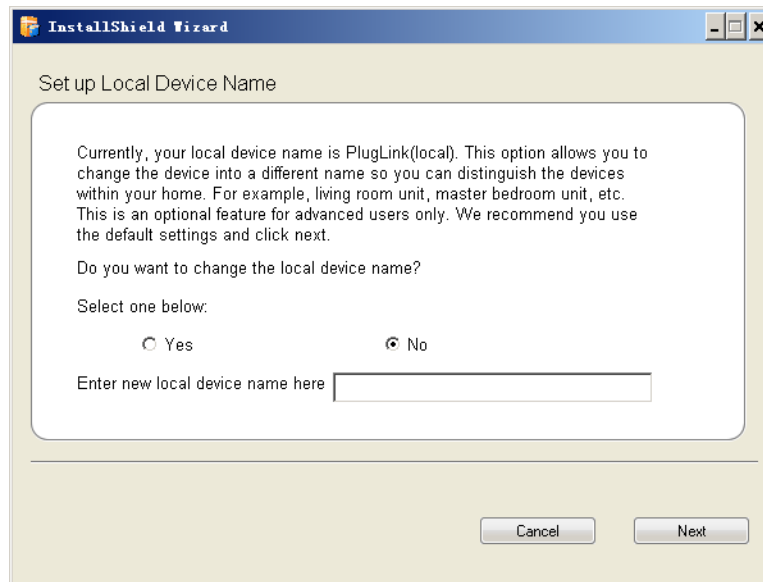
4. In the **Welcome** screen of the screen of the wizard, click **Next** to begin the installation.



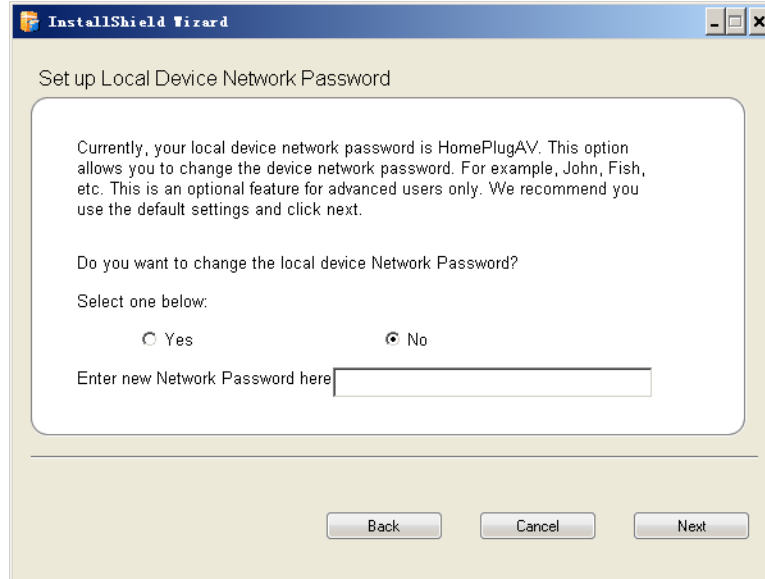
5. Read the End User Software License Agreement, and if you agree, click the **Agree** button to continue the installation.



6. To change the name of the PlugLink AV unit, select **Yes**, and enter a name in the text field. Otherwise, select **No**. Click **Next** to advance to the next screen.

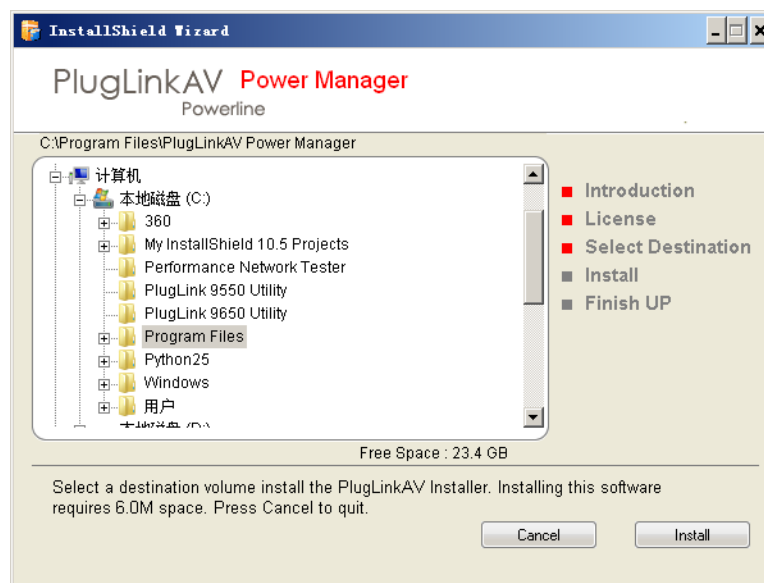


7. This following screen allows you to change the network password for your Plug Link 9671 units. To change the network password, select **Yes** and then enter the new password in the text field. Or, select **No** and click the **Next** button to continue.

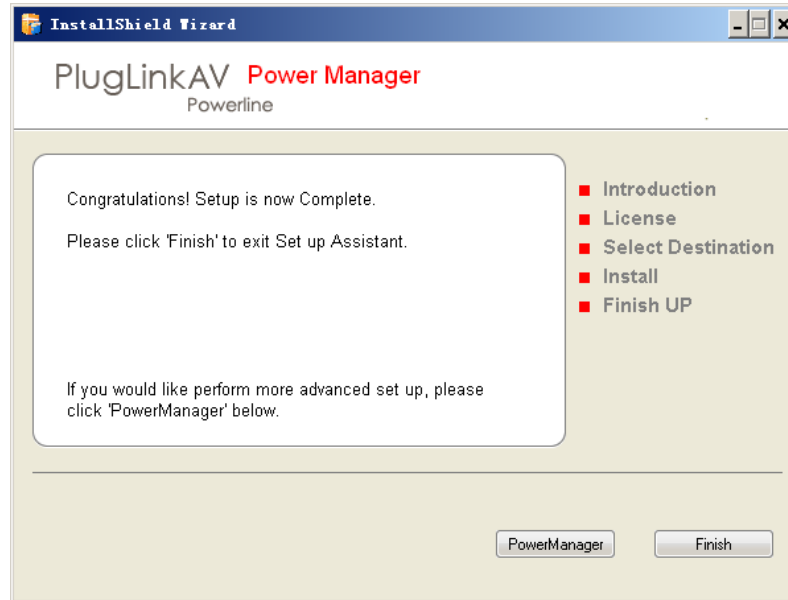


NOTE: All devices on your network must share the same password to communicate. Use care when changing the network password. The default password is Home Plug AV.

8. Select the location where you want to install the drivers and software and click the **Install** button.



9. When the installation of the PlugLink drivers and software is complete, you can use Power Manager Utility for advanced configuration of your PlugLink 9671 unit. Click **Finish** to finish the installation wizard.



Network Management

The Power Manager Utility allows you to manually configure a PlugLink-ETH-500 that is directly connected to your Personal Computer or to any PlugLink-ETH-500 that are remotely residing on your PlugLink Home network.



NOTE: The Power Manager Utility is for all Asoka PLC AV devices.

Viewing Device Information

Use the Profile screen to view information on your devices attached directly to your PC and other HD AV devices on your network.

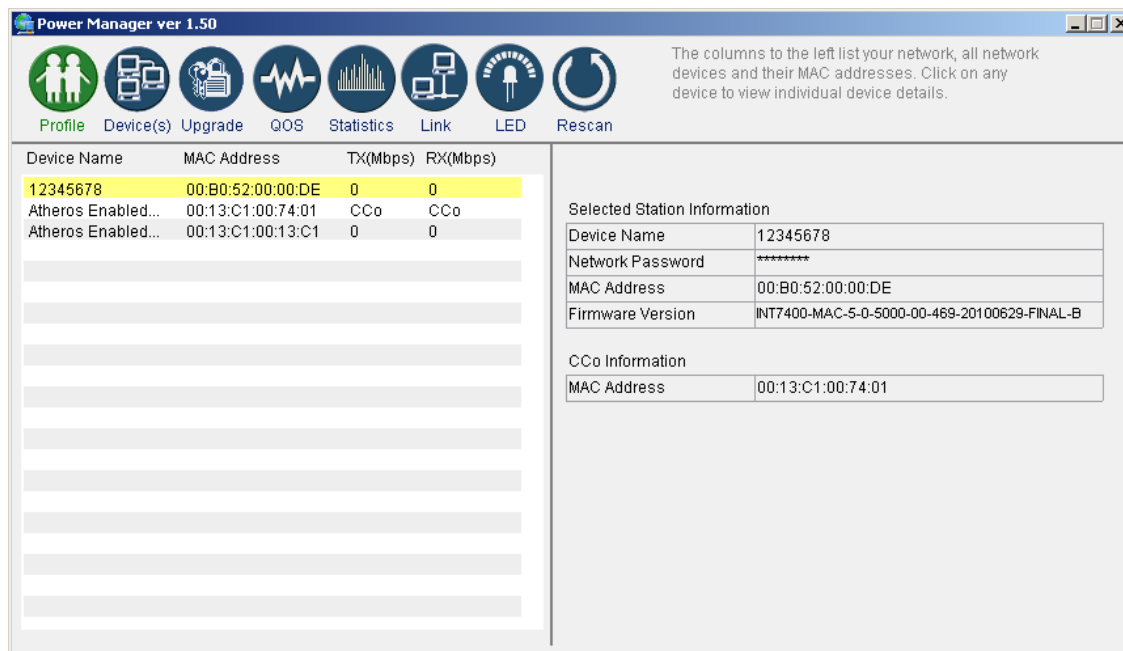
The Profile screen displays the following information:

- Device Name
- MAC Address
- Firmware version of your devices
- Estimated device transmission rate

To refresh the list of your HD AV devices, click the **Rescan** button.



NOTE: Devices set up with a different network password will NOT show up on this list.



Changing Names and Encryption Keys

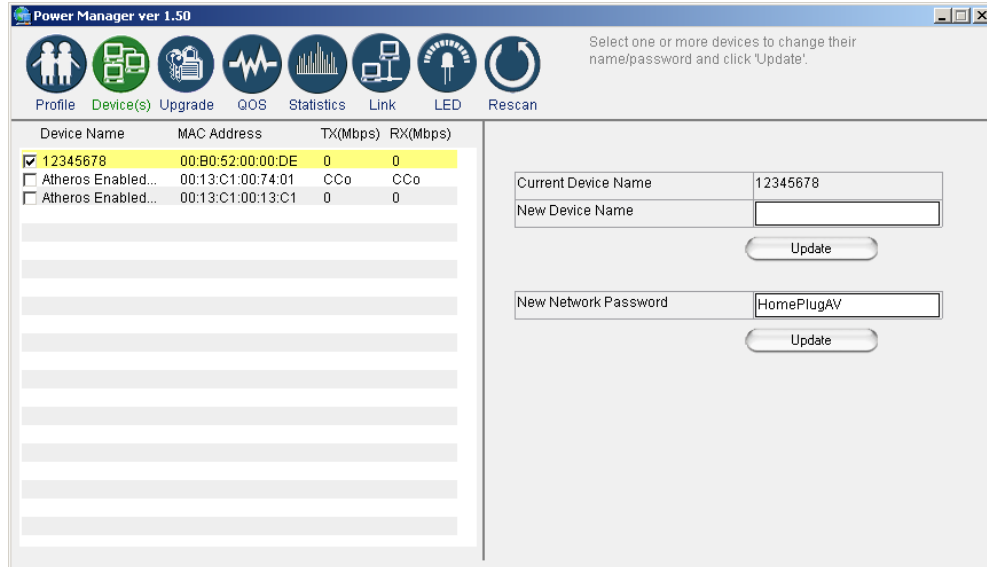
Use the Device Screen to change your local and remote device names and change local and remote device Network Encryption Keys (NEK). Always change the remote devices before changing the one you are connected to.

To change a remote device's NEK:

1. Check the box next to the device that you want to change the NEK.
2. Enter the password of the remote device. The password is printed on the device label. (example: AIAI-AFZO-FFMP-FLUI)
3. Enter a new NEK (Network Encryption Password) password.
4. Click the **Update** button



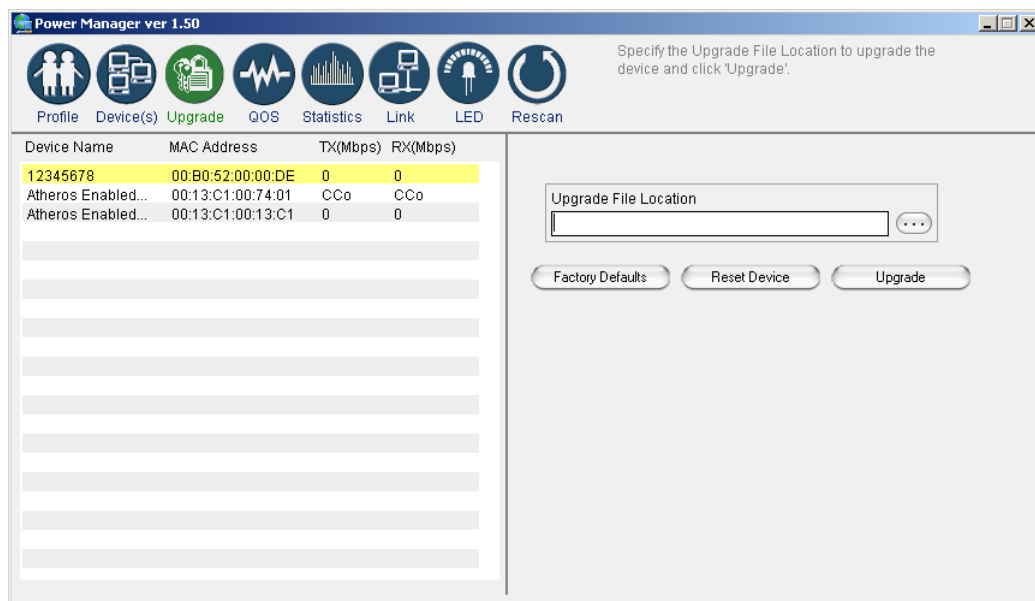
NOTE: The device will not appear again until the device you are connected to is changed to the same password. All devices must have the same password.



Resetting and Upgrading the PlugLink-ETH-500

Use the Upgrade Screen to perform the following functions:

1. Reset the PlugLink-ETH-500 to factory default settings.
2. Reboot the PlugLink-ETH-500 device. You can also reboot the device by unplugging and plugging the unit into the electrical outlet.
3. Upgrade the firmware for the PlugLink-ETH-500 device. Visit www.asokausa.com to upgrade the firmware.



Manually Resetting Firmware and NID

You can use the buttons on the PlugLink device to reset the firmware to its default, or NID to associate a network.



NOTE: The PlugLink device must be plugged into an electrical outlet when using these buttons. If you have questions, please contact Asoka USA Technical Support at (408) 550-8173

Prioritizing Network Traffic

Use the QoS screen to prioritize your traffic through the device.

- IGMP - (default CAP 3) - sets the channel access priority for IGMP group management frames
- Unicast - (default CAP 1) - sets the default channel access priority for Unicast frames not matching any other classification or mapping.
- IGMP managed Multicast Stream (It is better set it fixed to CAP 2) -sets the default channel access priority for stream data belonging to a snooped IGMP multicast group.
- Multicast/Broadcast - sets the default CAP for multicast frames not in a snooped group and for broadcast frames.

Power Manager ver 1.50

QoS requirements are different for various data types such as streaming video or music, voice and raw data. To provide higher QoS for streaming data, priority levels can be set using tags at the beginning of data frames.

Local device QoS setting. CAP3: Highest CAP2: Medium CAP1: Lowest

Device Name	MAC Address	TX(Mbps)	RX(Mbps)
12345678	00:B0:52:00:00:DE	0	0
Atheros Enabled...	00:13:C1:00:74:01	CCo	CCo
Atheros Enabled...	00:13:C1:00:13:C1	0	0

IGMP management packets: CAP3

Unicast packets: CAP1

IGMP managed multicast steam: CAP2

Other multicast or Broadcast packets: CAP3

Update

Viewing Network Statistics

The Statistics screen shows information on HomePlug packets that are transmitted and received by the devices in your network. To enable this function, click **Enable Statistics**.

The values shown by the Power Manager is a cumulative total of the packet data that was collected from the start of either the 'Enable Statistics' button or the 'Clear Statistics' button click.

Device Name	MAC Address	TX(Mbps)	RX(Mbps)
12345678	00:B0:52:00:00:DE	0	0
Atheros Enabled...	00:13:C1:00:74:01	CCo	CCo
Atheros Enabled...	00:13:C1:00:13:C1	0	0

Transmission Statistics

PBs Success	n/a
PBs Unsuccess	n/a
MPDUs Ack'd	206
MPDUs Collided	1
MPDUs Failed	n/a

Reception Statistics

PBs Success	n/a
PBs Unsuccess	n/a
MPDUs Rcvd	113
MPDUs Failed	n/a

Buttons: Disable Statistics, Clear Statistics

Viewing Ethernet and HomePlug Connection

The Link screen has two sub-screens that provide information about your Ethernet and HomePlug connection.

Viewing Connection Speed

The Ethernet sub screen shows the Ethernet connection speed of the local and destination devices in your network. You can select the destination device in the **Destination Address** drop down menu. Click the Retrieve button to get the information.

The values shown by the Power Manager is a cumulative total of the packet data that was collected from the start of either the 'Enable Statistics' button or the 'Clear Statistics' button click.

Device Name	MAC Address	TX(Mbps)	RX(Mbps)
12345678	00:B0:52:00:00:DE	0	0
Atheros Enabled...	00:13:C1:00:74:01	CCo	CCo
Atheros Enabled...	00:13:C1:00:13:C1	0	0

Connection Select(CSMA)
 Destination Address: All
 Channel Access Priority: All

Transmission Statistics

PBs Success	n/a
PBs Unsuccess	n/a
MPDUs Ack'd	206
MPDUs Collided	1
MPDUs Failed	n/a

Reception Statistics

PBs Success	n/a
PBs Unsuccess	n/a
MPDUs Rcvd	113
MPDUs Failed	n/a

Buttons: Disable Statistics, Clear Statistics

Statistics Sub screen

Use the Statistics sub screen to view statistical information about your connection between a source device and a specific destination device in your network. Click the Retrieve button to start accumulating the statistical information.

The context of the link is identified with the Source and Destination address boxes in the Link Characteristics group box.

Device Name	MAC Address	TX(Mbps)	RX(Mbps)
Asoka-1	00:13:C1:07:7A:22	0	0
2222	00:13:C1:07:7A:28	CCo	CCo
Conf 9164	00:13:C1:00:00:47	0	0
Intellon Enable...	00:13:C1:00:00:3D	39	46
Gateway	00:13:C1:07:7A:14	71	109
Michelle	00:13:C1:05:18:C1	15	66
Printer-2	00:13:C1:07:7A:1E	0	0
Smith	00:13:C1:07:7A:2A	15	17
Charlie2	00:13:C1:11:19:64	0	0
Shawn9660	00:13:C1:00:CC:1A	0	0
asokaman	00:13:C1:07:7A:1C	0	0

Link Statistic
 Source Address: 00:13:C1:07:7A:22
 Destination Address: 00:13:C1:07:7A:14

Ethernet Controls | Statistics

Rx Stats | Tx Stats

Avg. Pre-FEC Bit Error Rate	1.00%
Avg. Source PB CRC Error Rate	1.67%
Avg. Dest PB CRC Error Rate	1.67%
Avg. Available Margin	
Avg. Bits/Carrier	7.81
Avg. SNR/Carrier	21.40dB
Avg. Attenuation/Carrier	-60.00dB
Avg. Output Power/Carrier	-50.00dB

Buttons: Retrieve, Clear Error

Scanning Devices



Use the **Rescan** button to rescan the devices on the HomePlug network. This refreshes the information on all devices using the same password.

4

Troubleshooting

Following are solutions to a few situations you might encounter. If you do not find a solution in this chapter, contact Asoka USA Technical Support by phone at (408) 550-8173 or through email at support@asokausa.com.

Symptom: I can't connect to anything and there are no lights activated on my PL9671-A2.

Solution:

1. Unplug the device from the electrical outlet in question.
2. Locate another available outlet in your home.
3. Test the outlet by plugging in another electrical device such as a lamp or radio.
4. Plug the PL9671-A2 into the working electrical outlet.
5. Check to see if the lights work
6. If the above does not work, the device might be defective.
7. Please contact Technical Support for instructions on returning the device for repair or replacement.

Symptom: Some of my devices cannot connect to the Internet or other computers in my network. The lights seem to be functionally normally.

Solution #1:

1. Re-Initialize the PL9671-A2 device.
2. Unplug the PL9671-A2 from the electrical outlet.
3. Disconnect the Ethernet cable from the device
4. Plug the PL9671-A2 back into the electrical outlet.
5. Reconnect the Ethernet cable.

Solution #2:

The Network Encryption Key (NEK) may not be correct on your devices.

1. Reset the Network Encryption Key using the Factory Reset button located on the bottom of your PL9671-A2 device. This will reset the NEK back to the default of HomePlug.
2. Test your connection again. If this still does not work, perform the factory reset on all of your other PL9671-A2 devices in your network.

Solution #3:

It is possible some outlets in your home are not connected together.

1. Unplug the PL9671-A2 from the current electrical outlet.
2. Locate another outlet in the home.
3. Plug the PL9671-A2 into that outlet.
4. Attach a computer to the PL9671-A2.
5. Open the Power Manager Utility (located on the enclosed CD).
6. Under the Profile button, check if your PL9671-A2 is displayed (it will be the first) and see if your other PL9671-A2 devices can be seen. If you can see other devices under the Profile screen, your PL9671-A2 device is functioning properly.

Solution #4:

Your broadband connection may have stopped working.

1. Power down your broadband router and/or DSL/cable modem (if applicable) for about 30 seconds and then power them back on.
2. If this step fails, please contact your ISP for assistance.



Specifications

This appendix lists the specifications for your PL9671-A2.

Standards Compliance:	IEEE 1901 • HomePlug® AV • IEEE 802.3, IEEE 802.3x, IEEE 802.3u
Software Utility System Requirements:	Microsoft Windows® 98 SE, 2000, ME, XP, and Vista operating systems
Network Protocol:	TCP/IP, CSMA/CA, TDMA (supported in the future)
Network Interface:	One-port 10/100 MHz Ethernet (RJ-45) switch
Bandwidth:	Up to 500 Mbps
Distance:	over 300 Meter
Operating Frequency:	2 to 70 MHz
Modulation Schemes:	• Orthogonal Frequency Division Multiplexing (OFDM) • QAM 4096/1024/256/64/16 • QPSK • BPSK
EMI and Safety:	• FCC Part 15 Class B • UL (US and Canada) • CE
Additional Protocols:	• Forward Error Correction (FEC) • Automatic Channel Adaptation
Power Supply:	• US Version: 100-120VAC • UK/EU Version: 220-240VAC
Surge Energy Rating:	4KV
Power Rating:	• US Version: 120VAC 0.1A max, 60Hz • UK/EU Version: 220-240VAC 0.08A max, 50Hz
Security:	128-bit AES

Environmental Specifications:	<ul style="list-style-type: none"> • Operating temperature: 32°F to 113°F (0°C to 45°C) • Operating humidity: 10% to 85% Non-condensing • Storage temperature: -4°F to 158°F (-20°C to 70°C) • Storage humidity: 5% to 90% Non-condensing
Quality of Service:	<ul style="list-style-type: none"> • ToS • 802.1q • TDMA (supported in the future)
Warranty:	lifetime

Components

Front Panel

Use the status lights on the front panel to verify connections.



The following table describes the status light functions in the front panel:

Status Light	State	Indication
Power	Illuminated Off Red and Green illuminate alternately	Device is powered on Devices has no power Stand by mode (After 3 minutes no link)
PLC Activity	Blinking Red Blinking Yellow Blinking Green Off	Traffic is running at < 7 Mbps Traffic is running at > 7 Mbps and < 40 Mbps Traffic is running at > 40 Mbps No activity on power line
Eth Link	Illuminated Blinking Off	Ethernet connectivity Ethernet traffic No Ethernet connectivity

Bottom Panel

The bottom panel of the PL9671-A2 contains the following components:

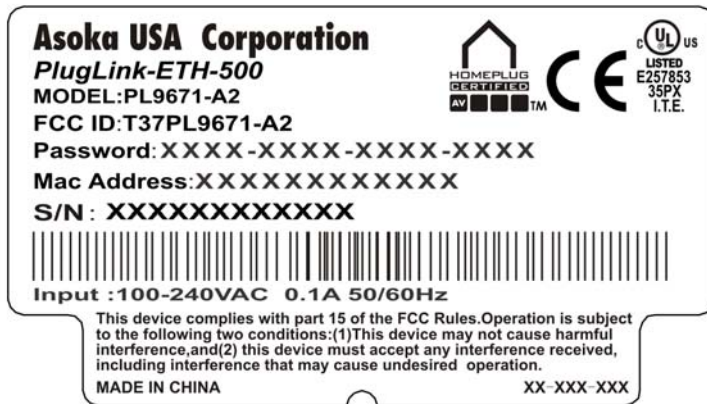
- RJ-45 Ethernet port



The label on the rear panel of the PlugLink-ETH-500 contains the information listed below.

- MAC address
- Model number
- Part number
- Serial number
- Unique device password

Note: Write this information down in your Warranty Support Information card for future reference.



Buttons

The PlugLink-ETH-500 device has two hardware push buttons:

- **FW RST button** - Resets the PlugLink-ETH-500 back to factory default settings. Press and hold the button with a pin or sharp object for about 2 seconds until you see the lights on the device flash briefly.
- **SECURITY button** - All PlugLink-ETH-500 devices have a default password Network Encryption Key (NEK) set to "HomePlugAV" allowing them to communicate to each other. The SECURITY button allows you to set a device's password to a randomized Network Encryption Key (NEK) for maximum security. You can then set other devices to the same NEK by using their SECURITY button. Only units with the same NEK can communicate to each other.

SETTING A RANDOMIZED NETWORK PASSWORD



1. Select a PlugLink-ETH-500 (Device A) and plug into an AC outlet. The POWER light indicator should be lit solid green.
 - a. Press the SECURITY button again BRIEFLY (less than 2.0 second) and release. The POWER light should now be blinking green.
 - b. **IMPORTANT:** If the POWER light is not blinking green, repeat Step "a" until the power light blinks green.

- c. This unit is now ready to create a new randomized NEK (Net Encryption Key) network. This unit will remain in this “adder” mode for about 2 minutes.
2. Select another PlugLink-ETH-500 (Device B) and plug into a second outlet.
 - a. Press the SECURITY button again BRIEFLY (less than 2.0 second) and release. The POWER light should now be blinking green.
 - b. *IMPORTANT:* If the power light is not blinking green, repeat Step “a” until the power light is blinking green.
3. In about 15 seconds the POWER light will change from flashing green to solid green and the PLC ACT (Power line Communication Activity) light will turn solid green (flashing green when there is data traffic) indicating they are synchronized with the same NEK.
4. Congratulations, you are done!

ADDING A THIRD OR MORE PLUGLINK HD AV DEVICES



1. Plug your new PlugLink-ETH-500 (Device C) into an AC outlet. The POWER light indicator should be lit solid green.
 - a. Press the SECURITY button again BRIEFLY (less than 2.0 second) and release. The POWER light should now be blinking green.
 - b. *IMPORTANT:* If the POWER light is not blinking green, repeat Step “a” until the power light is blinking green.
 - c. This unit is now ready to join the existing HD AV network. This unit will remain in this “adder” mode for about 2 minutes.
2. From your existing devices (either device A or device B) press the SECURITY button BRIEFLY (less than 2.0 second) then release. The POWER light should now be blinking green.
 - d. *IMPORTANT:* If the power light is not blinking green, repeat Step “2” until the power light is blinking green.
3. In about 15 seconds the POWER light will change from flashing green to solid green and the PLC ACT (Power line Communication Activity) light will turn solid green (flashing green when there is data traffic) indicating they are synchronized with the same NEK.
4. To add more PlugLink devices; simple repeat this process per device.
5. Congratulations, you are done!

Notes:

1. The other devices already in the Power line network with the proper NEK are not affected and do not need to be reconfigured.
2. If you disconnect power from any device, its NEK value will remain and will not default back to “HomePlugAV” NEK.

3. An adapter can only generate a private key once. To replace a private key, first reset the unit back to its factory defaults by pressing the FW RST button for 3 seconds, then follow the procedure above.



The use of the SECURITY button is optional. You may also use the application software described in the manual to set NEK's as well.



Warranty

Asoka warrants that (a) the hardware components of the product will be free from defects in materials and workmanship under normal use from the date of purchase when used within the limits set forth in the Specifications section of the User Guide, and (b) the software components will perform substantially in accordance with Asoka's published specifications for ninety (90) days from the date of purchase, but does not warrant that the software will be error-free or free of all defects.

Should a product fail to perform as described in the User Guide, it will be repaired or replaced with the same or functionally equivalent product by Asoka, at its discretion, free of charge provided that you: (a) return the failed product to an Asoka designated repair facility with shipping charge prepaid, and (b) provide Asoka with proof of the original date of purchase. Repaired or replacement products will be returned to you with shipping charges prepaid. Asoka warrants any replaced or repaired product or component for the life of the product.

This warranty extends only to you, the original purchaser and is not transferable to any subsequent purchasers.

This warranty does not apply if, in the judgment of Asoka, the product fails due to damage from shipment, handling, storage, accident, abuse, misapplication or misuse, or if it has been used or maintained in a manner not conforming to product manual instructions, has been modified in any way, or has had any serial number removed or defaced. Repair by anyone other than Asoka or an approved agent will void this warranty. The maximum liability of Asoka under this warranty is limited to the purchase price of the

product covered by the warranty. Prior to returning any defective product, the purchaser or the authorized merchant from whom the purchaser originally bought the product must obtain a Return Material Authorization (RMA) number from Asoka. All defective products should be returned to Asoka with shipping charges prepaid. Asoka will not accept collect shipments.

WHILE ASOKA HAS MADE EVERY EFFORT TO PROVIDE CLEAR AND ACCURATE TECHNICAL INFORMATION ABOUT ITS PRODUCTS, ASOKA ASSUMES NO LIABILITY FOR ANY EVENTS ARISING OUT OF THE USE OF THE TECHNICAL INFORMATION OR THE PRODUCT, EXCEPT AS SPECIFICALLY PROVIDED IN THIS AGREEMENT OR AS REQUIRED BY LAW. THE WARRANTIES AND REMEDIES STATED ABOVE ARE EXCLUSIVE AND IN LIEU OF ALL OTHERS, ORAL OR WRITTEN, EXPRESS OR IMPLIED. ANY AND ALL OTHER WARRANTIES, INCLUDING IMPLIED WARRANTIES OF MERCHANTABILITY, FITNESS FOR A PARTICULAR PURPOSE AND NON-INFRINGEMENT OF THIRD PARTY RIGHTS ARE EXPRESSLY EXCLUDED. ASOKA SHALL NOT BE LIABLE, UNDER ANY CIRCUMSTANCES, TO ANY PERSON OR ENTITY FOR ANY SPECIAL, INCIDENTAL, INDIRECT OR CONSEQUENTIAL DAMAGES, INCLUDING WITHOUT LIMITATION, DAMAGES RESULTING FROM THE USE OR MALFUNCTION OF THE PRODUCTS, LOSS OF PROFITS OR REVENUES, BUSINESS INTERRUPTION, OR COSTS OF REPLACEMENT GOODS, EVEN IF ASOKA IS INFORMED IN ADVANCE OF THE POSSIBILITY OF SUCH DAMAGES.



FCC Notice

FCC Statement

This equipment has been tested and found to comply with the limits for a Class B digital device, pursuant to part 15 of FCC Rules. These limits are designed to provide reasonable protection against harmful interference in a residential installation. This equipment generates and can radiate radio frequency energy and, if not installed and used in accordance with the instructions, may cause harmful interference to radio communications. However, there is no guarantee that interference will not occur in a particular installation. If this equipment does cause harmful interference to radio or television reception, which can be determined by turning the equipment off and on, the user is encouraged to try to correct the interference by one or more of the following measures:

- Reorient or relocate the receiving antenna.
- Increase the separation between the equipment and receiver.
- Connect the equipment into an outlet on a circuit different from that to which the receiver is connected.
- Consult the dealer or an experienced radio/TV technician for help

This device complies with Part 15 of FCC Rules.

Operation is subject to the following two conditions:

- 1 This device may not cause harmful interference, and
- 2 This device must accept any interference received, including interference that may cause undesired operation.

Note: The manufacturer is not responsible for any radio or TV interference caused by unauthorized modifications to this equipment. such modifications could void the user's authority to operate this equipment.

Asoka USA Corporation

2344 Walsh Avenue Suite A
Santa Clara, California 95051
USA Phone: (408) 550–8167
Fax: (408) 884–2390
www.asokausa.com

66-0365-01Rev.001