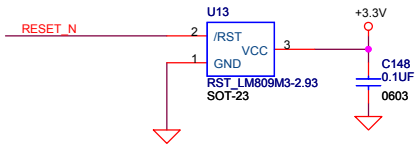


DATE	REVISION	DESCRIPTION
02/17/2005	001	Initial Release
03/08/2005	002	Added SAC5_0 for surge protect.
03/15/2005	003	Added reference voltage for 1.8V
05/14/2005	021	Delete R117,R116 AND TURBO LED
06/30/2005	022	ADD C8,C9,CY1,DO NOT STUFF R118,R119
09/12/2005	023	ADD FB IN SERIES WITH FUSE FOR EMI ADD PADDING RESISTORS FOR TXC, TXD0-TXD3, AND 25MHZ CLK FOR EMI

CONFIDENTIAL

Copyright 2004. Asoka USA Corporation. All Rights Reserved.
This document contains confidential information of Asoka USA Corporation. In consideration of the receipt of this document, recipient agrees not to reproduce or make this information available in any manner to persons outside the group directly responsible for evaluation of its contents.

ASOKA-USA, CORPORATION		
558 PILGRIM DRIVE, UNIT H FOSTER CITY, CA 94404 1-650-286-1700		
Title PL9650-ETH MAIN BOARD WITH AC101L		
Size A	Document Number <Doc> SCH-80-9650-023	Rev 0.23
Date:	Friday, October 14, 2005	Sheet 1 of 4

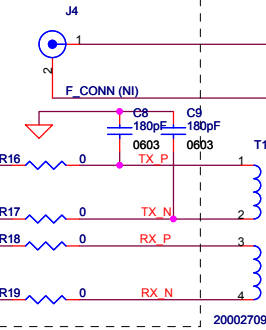


NOTE 1
OPTION FOR COAXIAL CABLE

Do not stuff U2, R3, D8, C6, R1, R2, and C7.

STUFF
R16, R17 = 33 Ohms
R18, R19 = 49.9 Ohms

NOTE 1

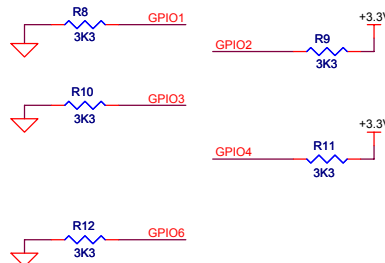
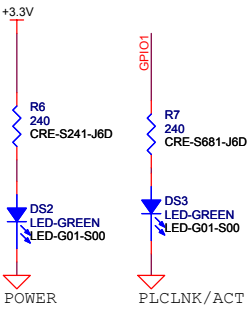
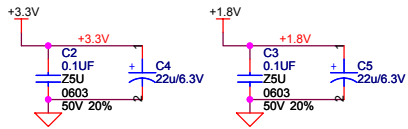
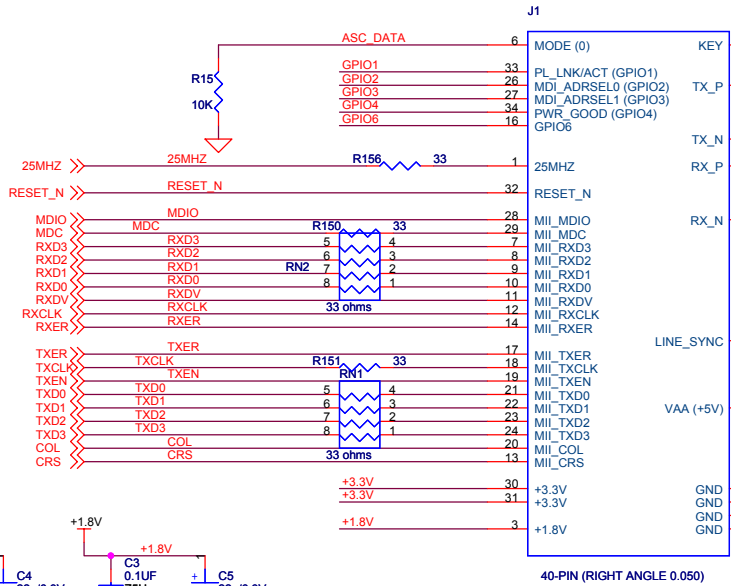
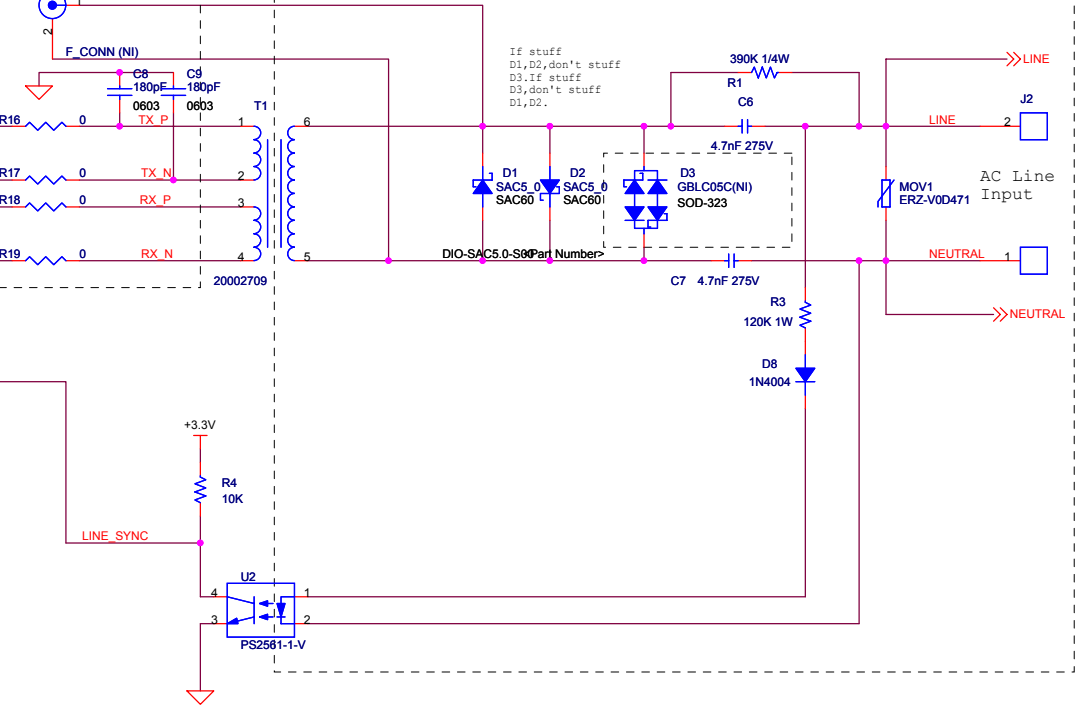


HIGH VOLTAGE AREA

For 120 VAC:
Minimum copper to copper spacing is 0.070" and minimum track width is 0.010"
for all tracks in this section. All tracks in this section require 0.130"
isolation from the rest of the board.

For 240 VAC:
Minimum copper to copper spacing is 0.096" and minimum track width is 0.010"
for all tracks in this section. All tracks in this section require 0.192"
isolation from the rest of the board.

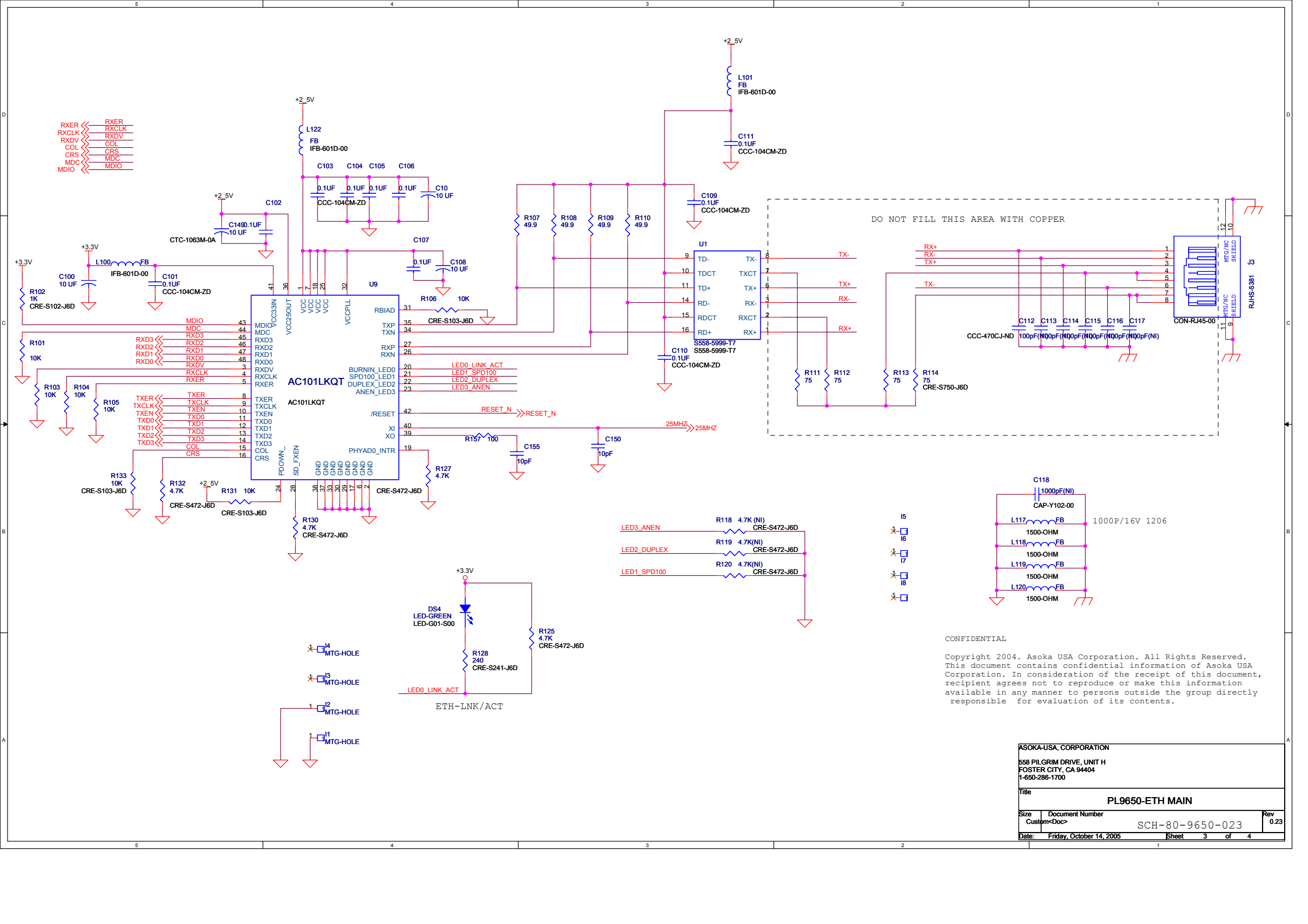
If stuff
D1,D2,don't stuff
D3.If stuff
D3,don't stuff
D1,D2.



CONFIDENTIAL

Copyright 2004. Asoka USA Corporation. All Rights Reserved.
This document contains confidential information of Asoka USA Corporation. In consideration of the receipt of this document, recipient agrees not to reproduce or make this information available in any manner to persons outside the group directly responsible for evaluation of its contents.

ASOKA-USA, CORPORATION		
568 PILGRIM DRIVE, UNIT H FOSTER CITY, CA 94404 1-850-286-1700		
Title		PL9650-ETH MAIN
Size	Document Number	Rev
Custom-Doc>	SCH-80-9650-023	0.23
Date:	Friday, November 04, 2005	Sheet 2 of 4

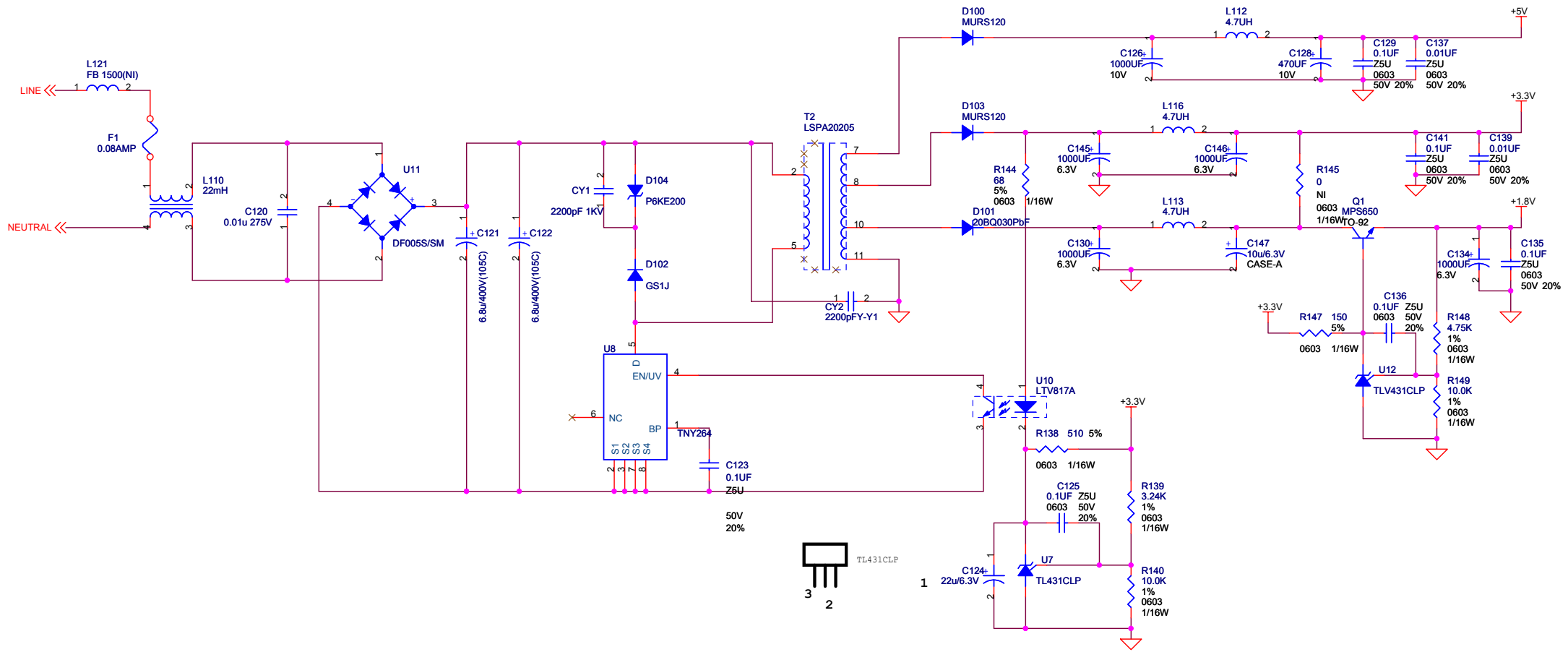


DO NOT FILL THIS AREA WITH COPPER

CONFIDENTIAL

Copyright 2004. Asoka USA Corporation. All Rights Reserved. This document contains confidential information of Asoka USA Corporation. In consideration of the receipt of this document, recipient agrees not to reproduce or make this information available in any manner to persons outside the group directly responsible for evaluation of its contents.

ASOKA-USA, CORPORATION			
558 PILGRIM DRIVE, UNIT H FOSTER CITY, CA 94404 1-650-286-1700			
Title PL9650-ETH MAIN			
Size	Document Number	Rev	
Custom+Doc+	SCH-80-9650-023	0.23	
Date:	Friday, October 14, 2005	Sheet	3 of 4



CONFIDENTIAL

Copyright 2004. Asoka USA Corporation. All Rights Reserved. This document contains confidential information of Asoka USA Corporation. In consideration of the receipt of this document, recipient agrees not to reproduce or make this information available in any manner to persons outside the group directly responsible for evaluation of its contents.

ASOKA-USA, CORPORATION

558 Pilgrim Drive, Unit H
Foster City, CA 94044
1-286-1700

Title		
PL9650-ETH MAIN		
Size	Document Number	Rev
B	<Doc>	0.23
Date: Friday, October 14, 2005		Sheet 4 of 4