
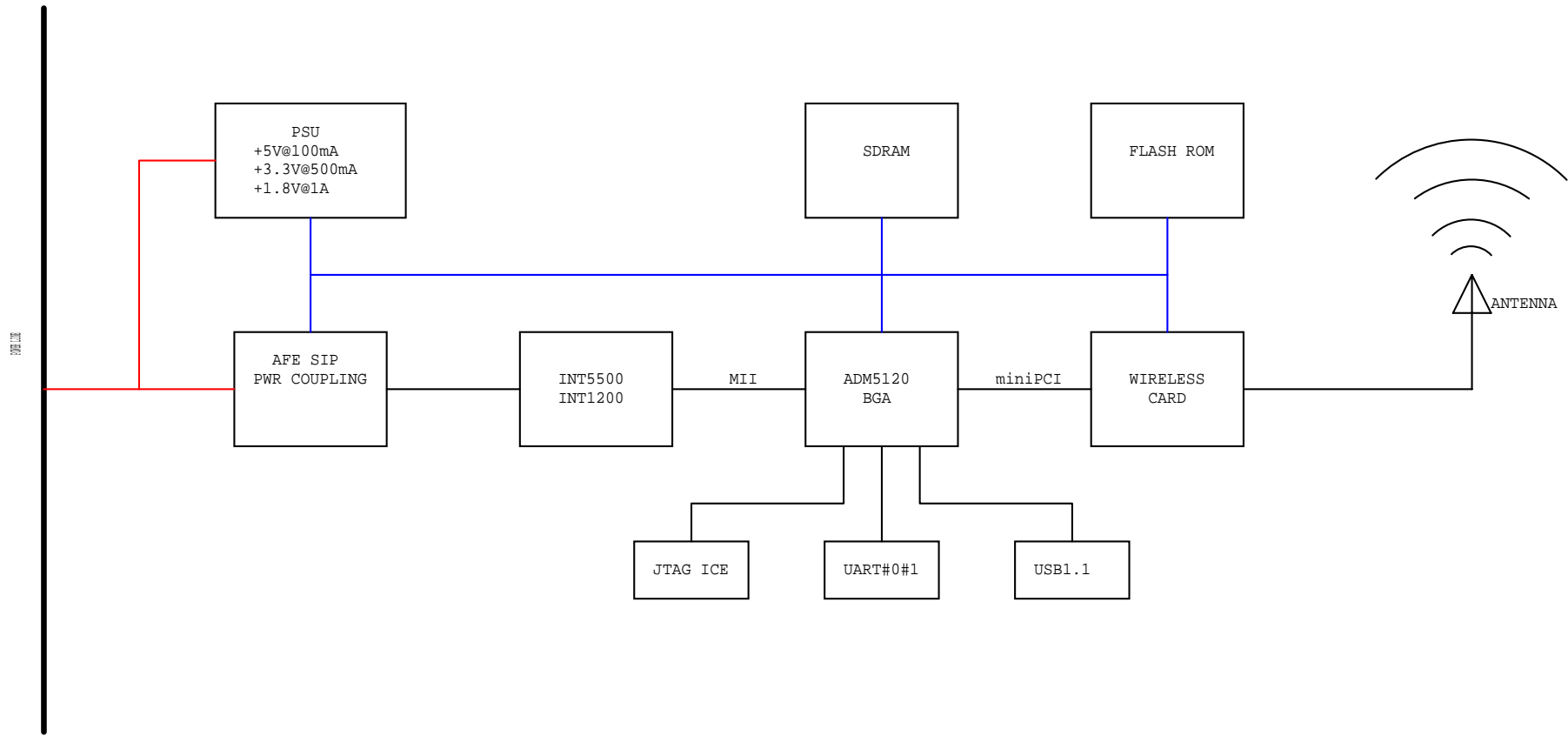


DATE	REVISION	DESCRIPTION
11/27/2004	010	FIRST RELEASE
03/03/2005	011	ADD SM5500A MODULE ADD RJ45
10/11/2005	012	ADD PADDING RESISTORS FOR TXC, TXD0-TXD3, RXCLK, RXD0-RXD3. ADD FILTERS FOR POWERS
11/19/2005	013	ADD FILTERS,CAPS FOR POWERS,ADD R104,R105
1/12/2006	014	ADD C39,C54,C85,C110-116,DELETE R110,R111
3/10/2007	015	ADD SIGNAL LED3_2 FOR 8MB FLASH

CONFIDENTIAL


Copyright 2004. Asoka USA Corporation. All Rights Reserved.
This document contains confidential information of Asoka USA Corporation. In consideration of the receipt of this document, recipient agrees not to reproduce or make this information available in any manner to persons outside the group directly responsible for evaluation of its contents.

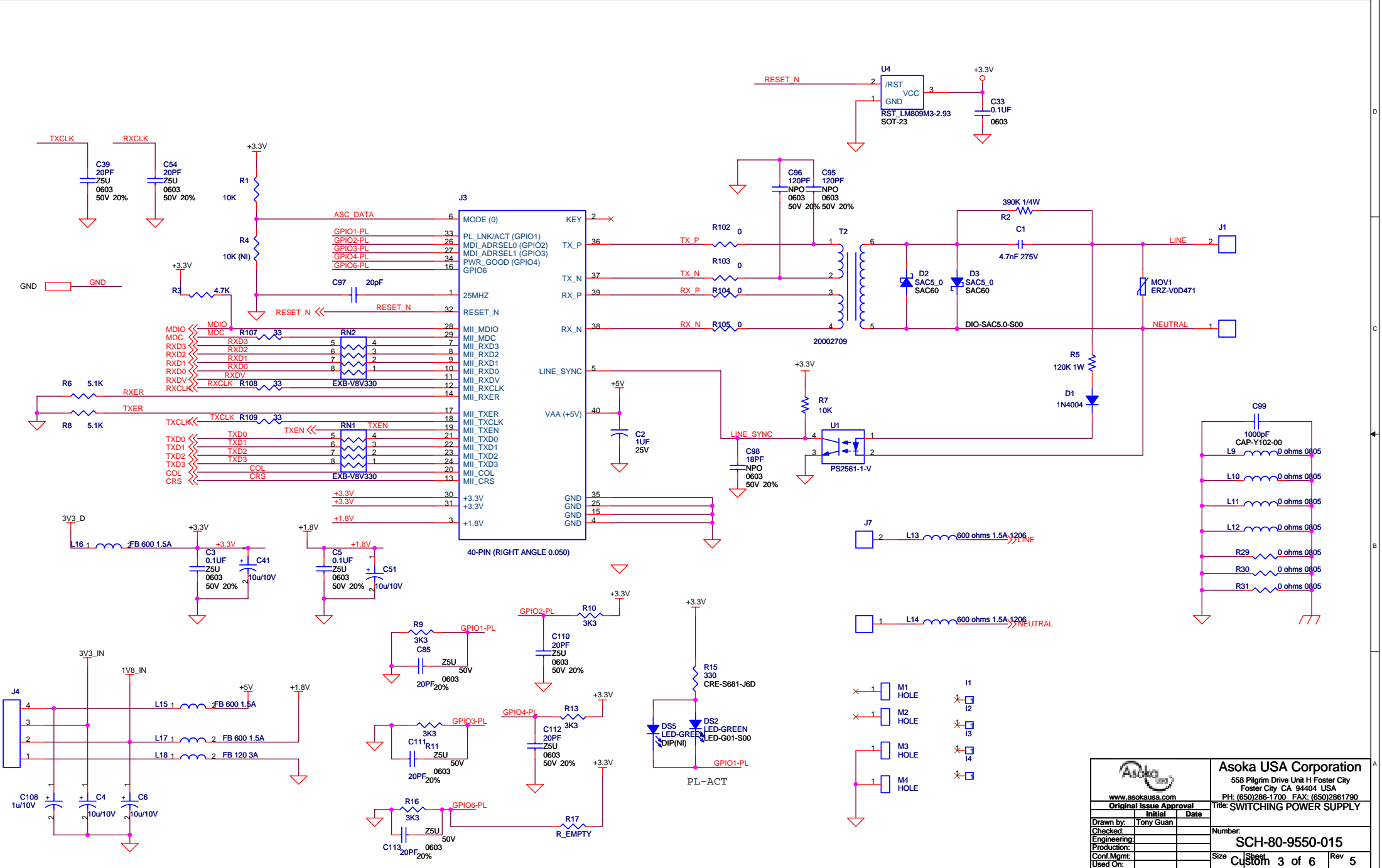
 www.asokausa.com		Asoka USA Corporation 558 Pilgrim Drive Unit H Foster City Foster City CA 94404 USA PH: (650)286-1700 FAX: (650)2861790	
Original Issue Approval		Title: PlugLink Wireless AP CHANGE RECORD	
	Initial	Date	
Drawn by:	Tony Guan		Number: SCH-80-9550-015
Checked:			
Engineering:			
Production:			
Conf.Mgmt:			
Used On:			
Size	A	Sheet	1 of 6
		Rev	5



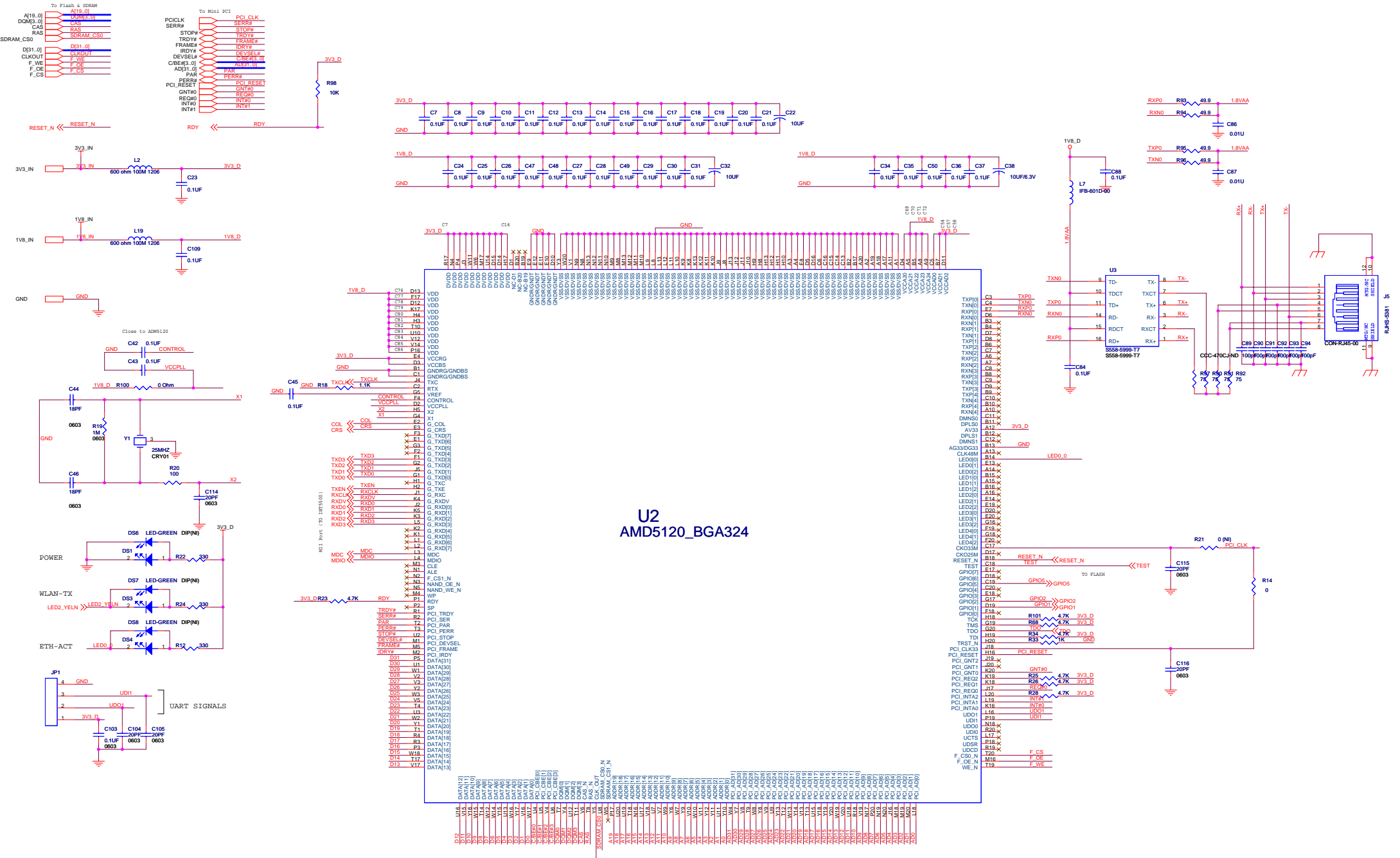
CONFIDENTIAL

Copyright 2004. Asoka USA Corporation. All Rights Reserved.
 This document contains confidential information of Asoka USA Corporation. In consideration of the receipt of this document, recipient agrees not to reproduce or make this information available in any manner to persons outside the group directly responsible for evaluation of its contents.

 www.asokausa.com		Asoka USA Corporation 558 Pilgrim Drive Unit H Foster City Foster City CA 94404 USA PH: (650)286-1700 FAX: (650)2861790	
		Title: PlugLink Wireless AP BLOCK DIAGRAM	
Original Issue Approval		Number:	
Drawn by:	Initial	Date	SCH-80-9550-015
Checked:			
Engineering:			
Production:			
Conf.Mgmt:			
Used On:			Size A Sheet 2 of 6 Rev 5



		Asoka USA Corporation 558 Pilgrim Drive Unit H Foster City Foster City, CA 94404 USA PH: (650)286-1700 FAX: (650)2861790	
		Title: SWITCHING POWER SUPPLY	
www.asokausa.com Original Issue Approval		Number:	Sheet
Drawn by: Tony Guan	Initial	Date	SCH-80-9550-015
Checked:	Engineering:	Production:	Size: Custom 3 of 6
Conf. Mgmt:	Used On:	Rev 5	

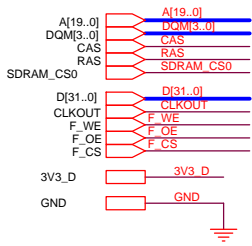


U2
AMD5120_BGA324

CONFIDENTIAL

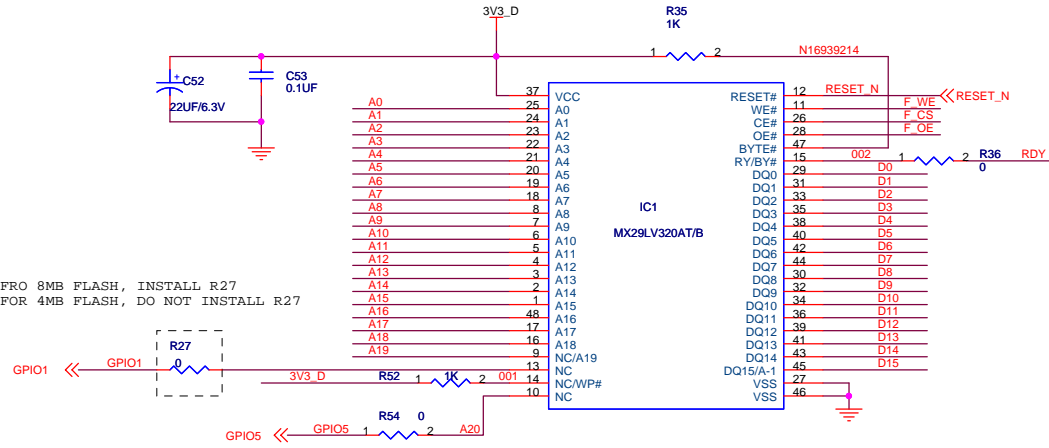
Copyright 2004, Asoka USA Corporation. All Rights Reserved. This document contains confidential information of Asoka USA Corporation. In consideration of the receipt of this document, recipient agrees not to reproduce or make this information available in any manner to persons outside the group directly responsible for evaluation of its contents.

		Asoka USA Corporation 558 Plagem Drive Unit H Foster City Foster City CA 94404 USA PH: (650)288-1700 FAX: (650)2881720	
		Title: PlugLink Wireless AP	
Original Issue Approval: [Signature] Date: [Date]	Drawn By: Tony Guan Checked: [Signature] Engineering: [Signature] Production: [Signature] Cost: [Signature]	Number: SCH-80-9550-015 Size: Custom 4 of 6 Rev: 5	Used On: [Date]

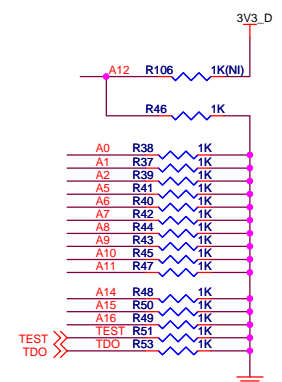


FOR 8MB FLASH, INSTALL R27
FOR 4MB FLASH, DO NOT INSTALL R27

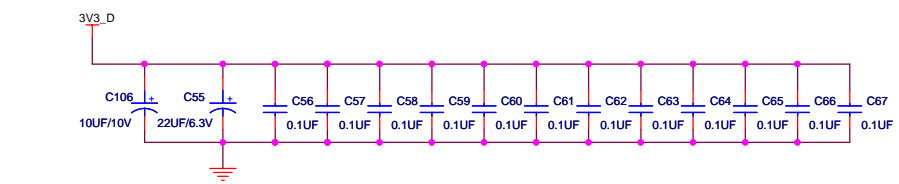
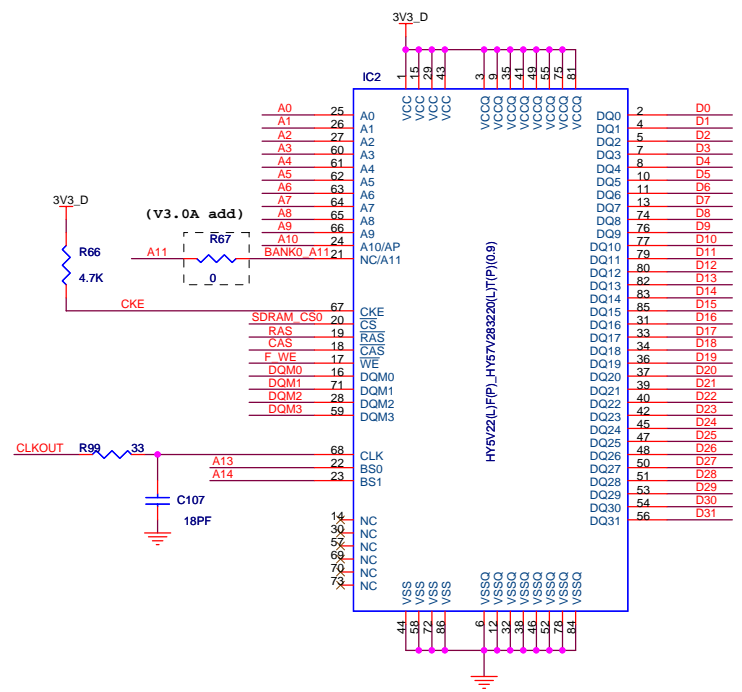
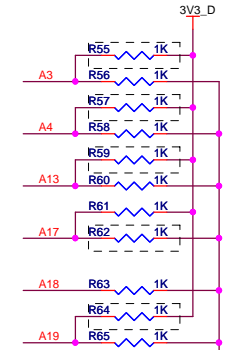
RDY << RDY



A1: NAND boot, pull down to disable
A2: Auto MDIX, pull down to enable
A12: Model, pull up to QFP package
A0,A5-A11,A14-A16: must be pull down
(for internal use)
A8, R44, R45, R46, R47, R48, R49, R50, R51, R52, R53, R54, R55, R56, R57, R58, R59, R60, R61, R62, R63, R64, R65, R66, R67, R68, R69, R70, R71, R72, R73, R74, R75, R76, R77, R78, R79, R80, R81, R82, R83, R84, R85, R86, R87, R88, R89, R90, R91, R92, R93, R94, R95, R96, R97, R98, R99, R100, R101, R102, R103, R104, R105, R106, R107, R108, R109, R110, R111, R112, R113, R114, R115, R116, R117, R118, R119, R120, R121, R122, R123, R124, R125, R126, R127, R128, R129, R130, R131, R132, R133, R134, R135, R136, R137, R138, R139, R140, R141, R142, R143, R144, R145, R146, R147, R148, R149, R150, R151, R152, R153, R154, R155, R156, R157, R158, R159, R160, R161, R162, R163, R164, R165, R166, R167, R168, R169, R170, R171, R172, R173, R174, R175, R176, R177, R178, R179, R180, R181, R182, R183, R184, R185, R186, R187, R188, R189, R190, R191, R192, R193, R194, R195, R196, R197, R198, R199, R200, R201, R202, R203, R204, R205, R206, R207, R208, R209, R210, R211, R212, R213, R214, R215, R216, R217, R218, R219, R220, R221, R222, R223, R224, R225, R226, R227, R228, R229, R230, R231, R232, R233, R234, R235, R236, R237, R238, R239, R240, R241, R242, R243, R244, R245, R246, R247, R248, R249, R250, R251, R252, R253, R254, R255, R256, R257, R258, R259, R260, R261, R262, R263, R264, R265, R266, R267, R268, R269, R270, R271, R272, R273, R274, R275, R276, R277, R278, R279, R280, R281, R282, R283, R284, R285, R286, R287, R288, R289, R290, R291, R292, R293, R294, R295, R296, R297, R298, R299, R300, R301, R302, R303, R304, R305, R306, R307, R308, R309, R310, R311, R312, R313, R314, R315, R316, R317, R318, R319, R320, R321, R322, R323, R324, R325, R326, R327, R328, R329, R330, R331, R332, R333, R334, R335, R336, R337, R338, R339, R340, R341, R342, R343, R344, R345, R346, R347, R348, R349, R350, R351, R352, R353, R354, R355, R356, R357, R358, R359, R360, R361, R362, R363, R364, R365, R366, R367, R368, R369, R370, R371, R372, R373, R374, R375, R376, R377, R378, R379, R380, R381, R382, R383, R384, R385, R386, R387, R388, R389, R390, R391, R392, R393, R394, R395, R396, R397, R398, R399, R400, R401, R402, R403, R404, R405, R406, R407, R408, R409, R410, R411, R412, R413, R414, R415, R416, R417, R418, R419, R420, R421, R422, R423, R424, R425, R426, R427, R428, R429, R430, R431, R432, R433, R434, R435, R436, R437, R438, R439, R440, R441, R442, R443, R444, R445, R446, R447, R448, R449, R450, R451, R452, R453, R454, R455, R456, R457, R458, R459, R460, R461, R462, R463, R464, R465, R466, R467, R468, R469, R470, R471, R472, R473, R474, R475, R476, R477, R478, R479, R480, R481, R482, R483, R484, R485, R486, R487, R488, R489, R490, R491, R492, R493, R494, R495, R496, R497, R498, R499, R500, R501, R502, R503, R504, R505, R506, R507, R508, R509, R510, R511, R512, R513, R514, R515, R516, R517, R518, R519, R520, R521, R522, R523, R524, R525, R526, R527, R528, R529, R530, R531, R532, R533, R534, R535, R536, R537, R538, R539, R540, R541, R542, R543, R544, R545, R546, R547, R548, R549, R550, R551, R552, R553, R554, R555, R556, R557, R558, R559, R560, R561, R562, R563, R564, R565, R566, R567, R568, R569, R570, R571, R572, R573, R574, R575, R576, R577, R578, R579, R580, R581, R582, R583, R584, R585, R586, R587, R588, R589, R590, R591, R592, R593, R594, R595, R596, R597, R598, R599, R600, R601, R602, R603, R604, R605, R606, R607, R608, R609, R610, R611, R612, R613, R614, R615, R616, R617, R618, R619, R620, R621, R622, R623, R624, R625, R626, R627, R628, R629, R630, R631, R632, R633, R634, R635, R636, R637, R638, R639, R640, R641, R642, R643, R644, R645, R646, R647, R648, R649, R650, R651, R652, R653, R654, R655, R656, R657, R658, R659, R660, R661, R662, R663, R664, R665, R666, R667, R668, R669, R670, R671, R672, R673, R674, R675, R676, R677, R678, R679, R680, R681, R682, R683, R684, R685, R686, R687, R688, R689, R690, R691, R692, R693, R694, R695, R696, R697, R698, R699, R700, R701, R702, R703, R704, R705, R706, R707, R708, R709, R710, R711, R712, R713, R714, R715, R716, R717, R718, R719, R720, R721, R722, R723, R724, R725, R726, R727, R728, R729, R730, R731, R732, R733, R734, R735, R736, R737, R738, R739, R740, R741, R742, R743, R744, R745, R746, R747, R748, R749, R750, R751, R752, R753, R754, R755, R756, R757, R758, R759, R760, R761, R762, R763, R764, R765, R766, R767, R768, R769, R770, R771, R772, R773, R774, R775, R776, R777, R778, R779, R780, R781, R782, R783, R784, R785, R786, R787, R788, R789, R790, R791, R792, R793, R794, R795, R796, R797, R798, R799, R800, R801, R802, R803, R804, R805, R806, R807, R808, R809, R810, R811, R812, R813, R814, R815, R816, R817, R818, R819, R820, R821, R822, R823, R824, R825, R826, R827, R828, R829, R830, R831, R832, R833, R834, R835, R836, R837, R838, R839, R840, R841, R842, R843, R844, R845, R846, R847, R848, R849, R850, R851, R852, R853, R854, R855, R856, R857, R858, R859, R860, R861, R862, R863, R864, R865, R866, R867, R868, R869, R870, R871, R872, R873, R874, R875, R876, R877, R878, R879, R880, R881, R882, R883, R884, R885, R886, R887, R888, R889, R890, R891, R892, R893, R894, R895, R896, R897, R898, R899, R900, R901, R902, R903, R904, R905, R906, R907, R908, R909, R910, R911, R912, R913, R914, R915, R916, R917, R918, R919, R920, R921, R922, R923, R924, R925, R926, R927, R928, R929, R930, R931, R932, R933, R934, R935, R936, R937, R938, R939, R940, R941, R942, R943, R944, R945, R946, R947, R948, R949, R950, R951, R952, R953, R954, R955, R956, R957, R958, R959, R960, R961, R962, R963, R964, R965, R966, R967, R968, R969, R970, R971, R972, R973, R974, R975, R976, R977, R978, R979, R980, R981, R982, R983, R984, R985, R986, R987, R988, R989, R990, R991, R992, R993, R994, R995, R996, R997, R998, R999, R1000

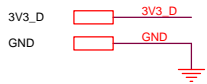


A4-A3: P11 setting
00=175MHz (default)
01=200MHz (default)
10,11=Reserved
A13: Separate Power,
0: PHY separate power on disable
(default)
1: PHY separate power on enable
A18-A17: Nor flash boot
00: boot in 8 bit.
01: boot in 16 bit. (default)
10,11 = Reserved
A19: endian
0: little endian (default)
1: big endian

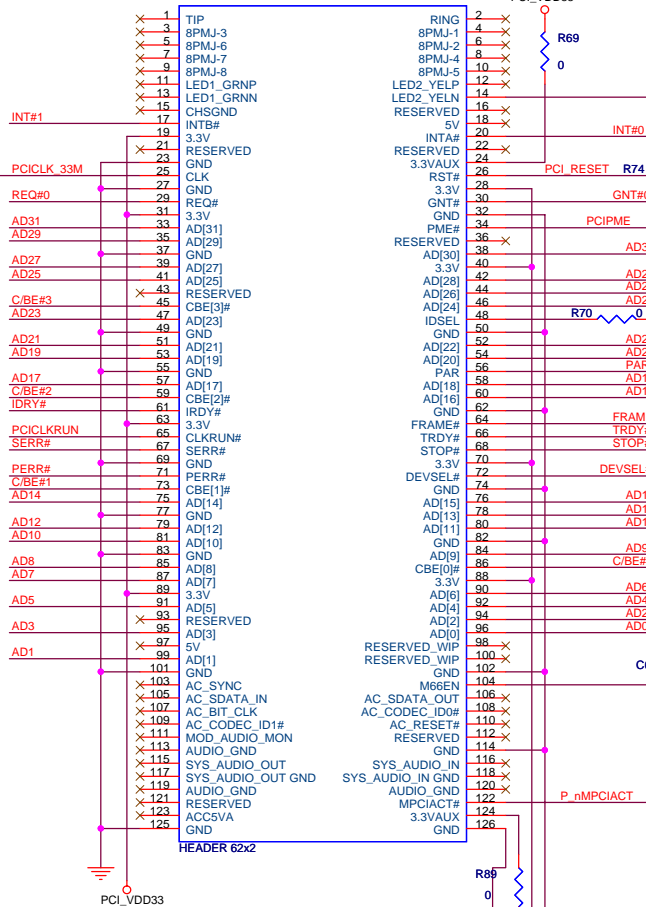
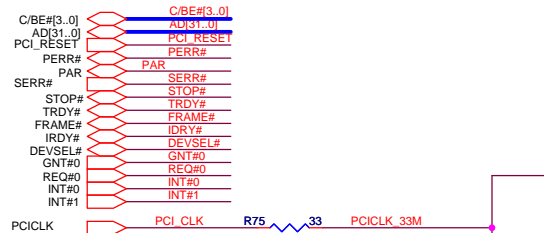


CONFIDENTIAL
Copyright 2004. Asoka USA Corporation. All Rights Reserved. This document contains confidential information of Asoka USA Corporation. In consideration of the receipt of this document, recipient agrees not to reproduce or make this information available in any manner to persons outside the group directly responsible for evaluation of its contents.

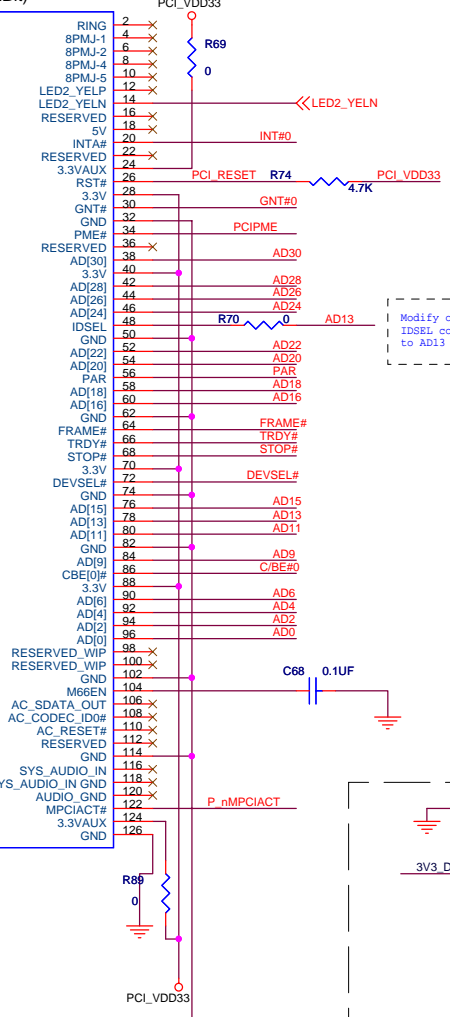
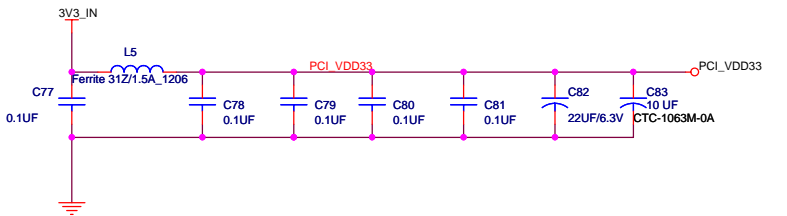
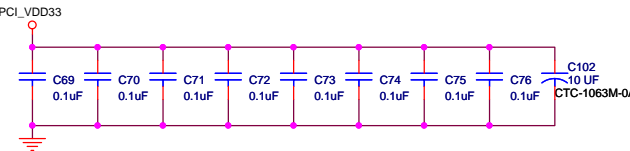
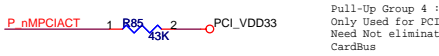
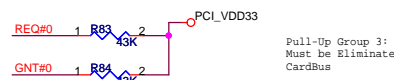
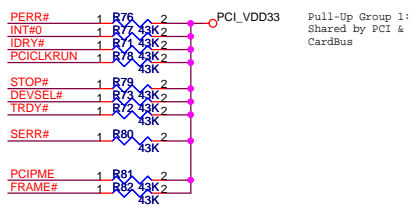
		Asoka USA Corporation 558 Pilgrim Drive Unit H Foster City Foster City, CA 94004 USA PH: (650)286-1700 FAX: (650)2861790	
		www.asokausa.com Original Issue Approval	
Drawn by: Tony Guan	Initial	Date	Title: PlugLink Wireless AP FLASH & SDRAM
Checked:	Engineering:	Production:	Number:
Conf.Momt:	Used On:	Size:	Sheet: 5 of 6 Rev: 5



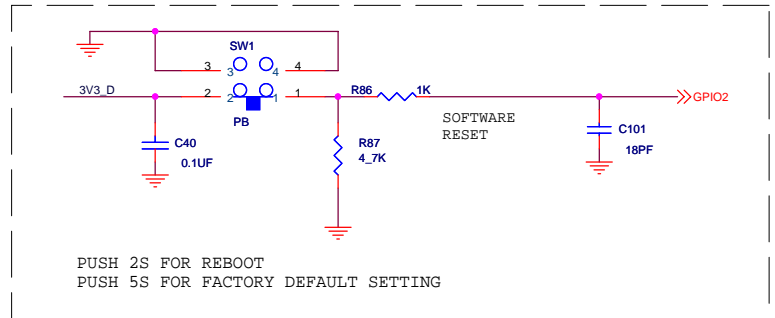
PCI Slot 1
Mini PCI Slot
(3.3V,33/66MHz,32Bit)



All Pull-up groups must be placed on the Back side of the board



Modify on board
IDSEL connect from AD14
to AD13



PUSH 2S FOR REBOOT
PUSH 5S FOR FACTORY DEFAULT SETTING

CONFIDENTIAL
Copyright 2004, Asoka USA Corporation. All Rights Reserved. This document contains confidential information of Asoka USA Corporation. In consideration of the receipt of this document, recipient agrees not to reproduce or make this information available in any manner to persons outside the group directly responsible for evaluation of its contents.

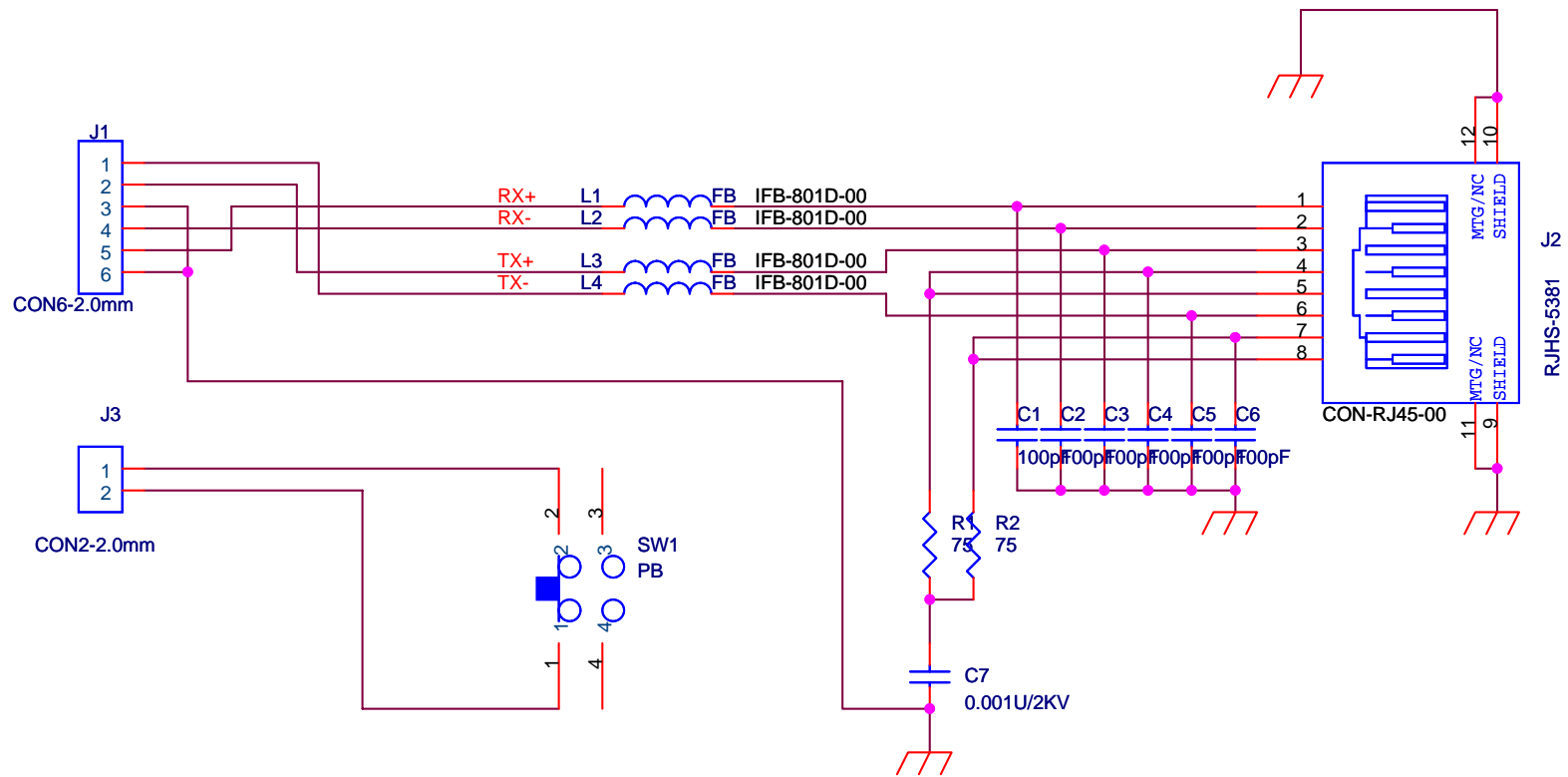
		Asoka USA Corporation 558 Pilgrim Drive Unit H Foster City Foster City CA 94404 USA PH: (650)286-1700 FAX: (650)2861790	
		www.asokausa.com Original Issue Approval	
Drawn by: Tony Guan	Initial	Date	Number:
Checked:	Engineering:	Production:	Conf.Momt:
Used On:	Size	Sheet	Rev
SCH-80-9550-015			Custom 6 of 6

DATE	REVISION	DESCRIPTION
02/22/2008	A	FIRST RELEASE
03/06/2008	B	ADD RESET KEY for PL8350-WAP

CONFIDENTIAL

Copyright 2007. Asoka USA Corporation. All Rights Reserved.
 This document contains confidential information of Asoka USA Corporation. In consideration of the receipt of this document, recipient agrees not to reproduce or make this information available in any manner to persons outside the group directly responsible for evaluation of its contents.

ASOKA-USA, CORPORATION		
558 PILGRIM DRIVE, UNIT H FOSTER CITY, CA94404 1-650-286-1700		
Title		
RJ45 Connector board		
Size	Document Number	Rev
A	SCH-80-1108-01	B
Date:	Thursday, March 06, 2008	Sheet 1 of 2



CONFIDENTIAL

Copyright 2007. Asoka USA Corporation. All Rights Reserved.
 This document contains confidential information of Asoka USA Corporation. In consideration of the receipt of this document, recipient agrees not to reproduce or make this information available in any manner to persons outside the group directly responsible for evaluation of its contents.

ASOKA-USA, CORPORATION

558 PILGRIM DRIVE, UNIT H
 FOSTER CITY, CA94404
 1-650-286-1700

Title		
RJ45 Connector board		
Size A	Document Number SCH-80-1108-01	Rev B
Date:	Thursday, March 27, 2008	Sheet 2 of 2

5

4

3

2

1

D

D

DATE

REVISION

DESCRIPTION

3/3/2008

02

A

C

C

B

B

A

A

Title		
PL8350-WAP Filter Board		
Size	Document Number	Rev
A	SCH-80-1203-02Rev.A.DSN	A
Date:	Monday, March 03, 2008	Sheet 1 of 2

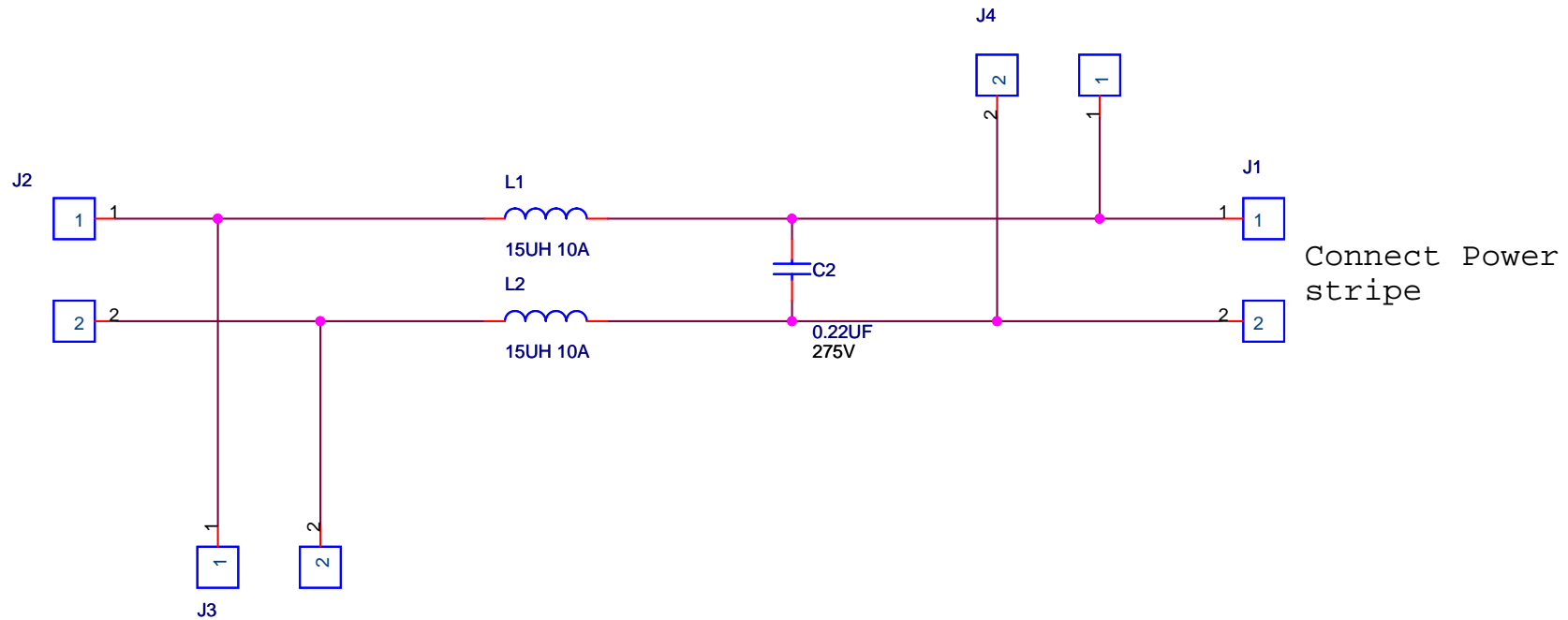
5

4

3

2

1



Title		
PL8350-WAP Filter Board		
Size	Document Number	Rev
A	SCH-80-1203-02Rev.A.DSN	A
Date:	Monday, March 03, 2008	Sheet 2 of 2

DATE	REVISION	DESCRIPTION
08/02/2005	010	INITIAL RELEASE
12/27/2005	011	add C77,C78,R58,R59
05/20/2006	012	add C79,C80

ASOKA-USA, CORPORATION

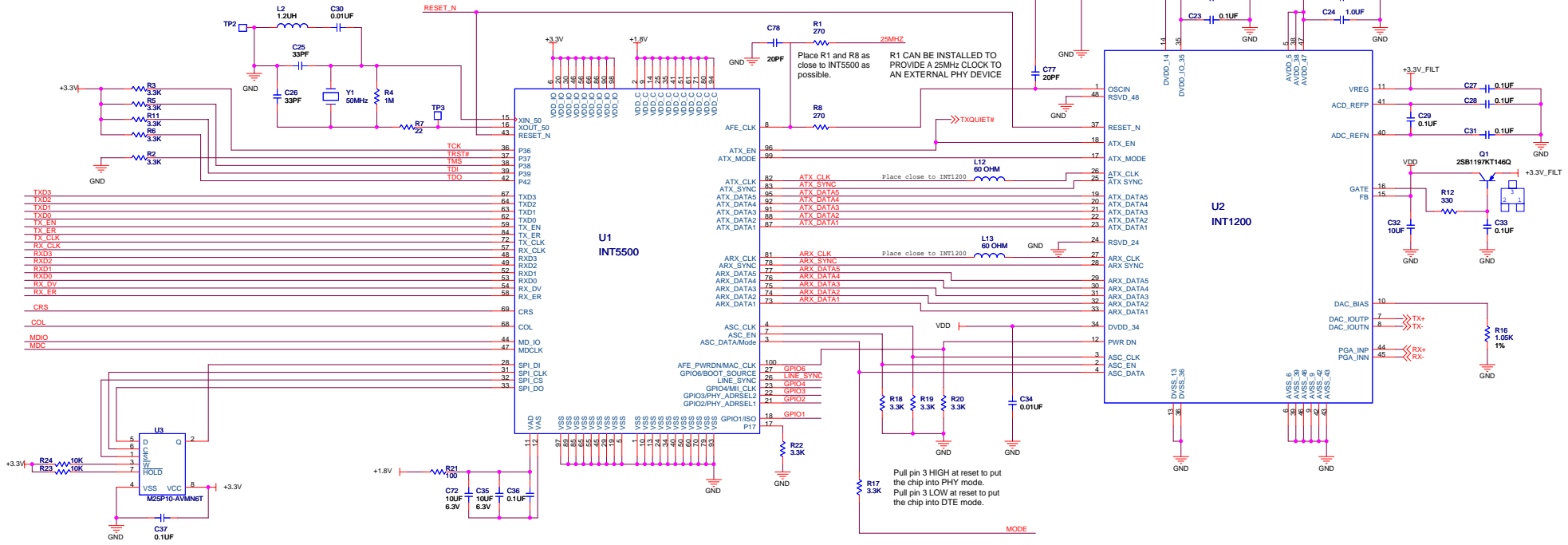
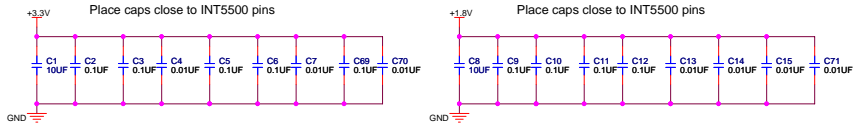
558 PILGRIM DRIVE, UNIT H
 FOSTER CITY, CA 94404
 1-650-286-1700

Title

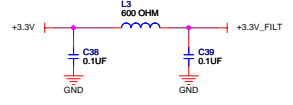
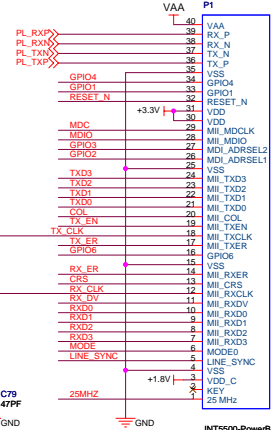
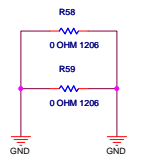
SM5560 SIMPLE MODULE

Size A	Document Number <Doc> SCH-80-5560-012	Rev
-----------	--	-----

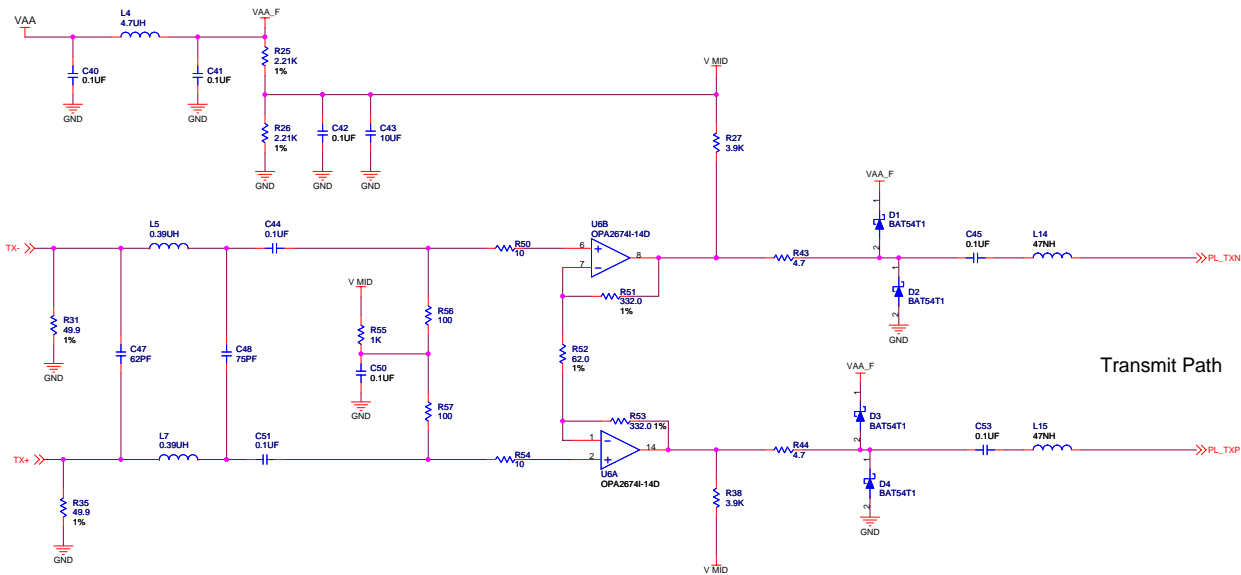
Date: Monday, May 22, 2006 Sheet 1 of 3



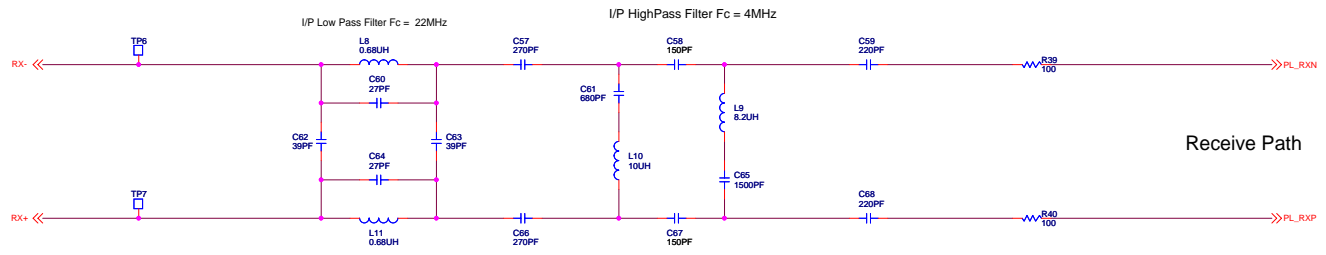
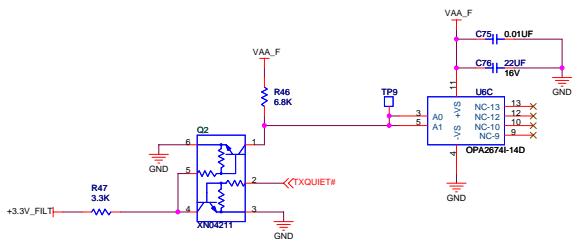
NVM needed in applications where the MAC firmware is not loaded from the host.



ASOKA-USA, CORPORATION		
558 PILGRIM DRIVE, UNIT H FOSTER CITY, CA 94044 1-850-286-1700		
File	SM5560 SIMPLE MODULE	
Size	Document Number	Rev
C	<doc> SCH-80-5560-012	
Date:	Monday, May 22, 2006	Sheet 2 of 3



Transmit Path



Receive Path

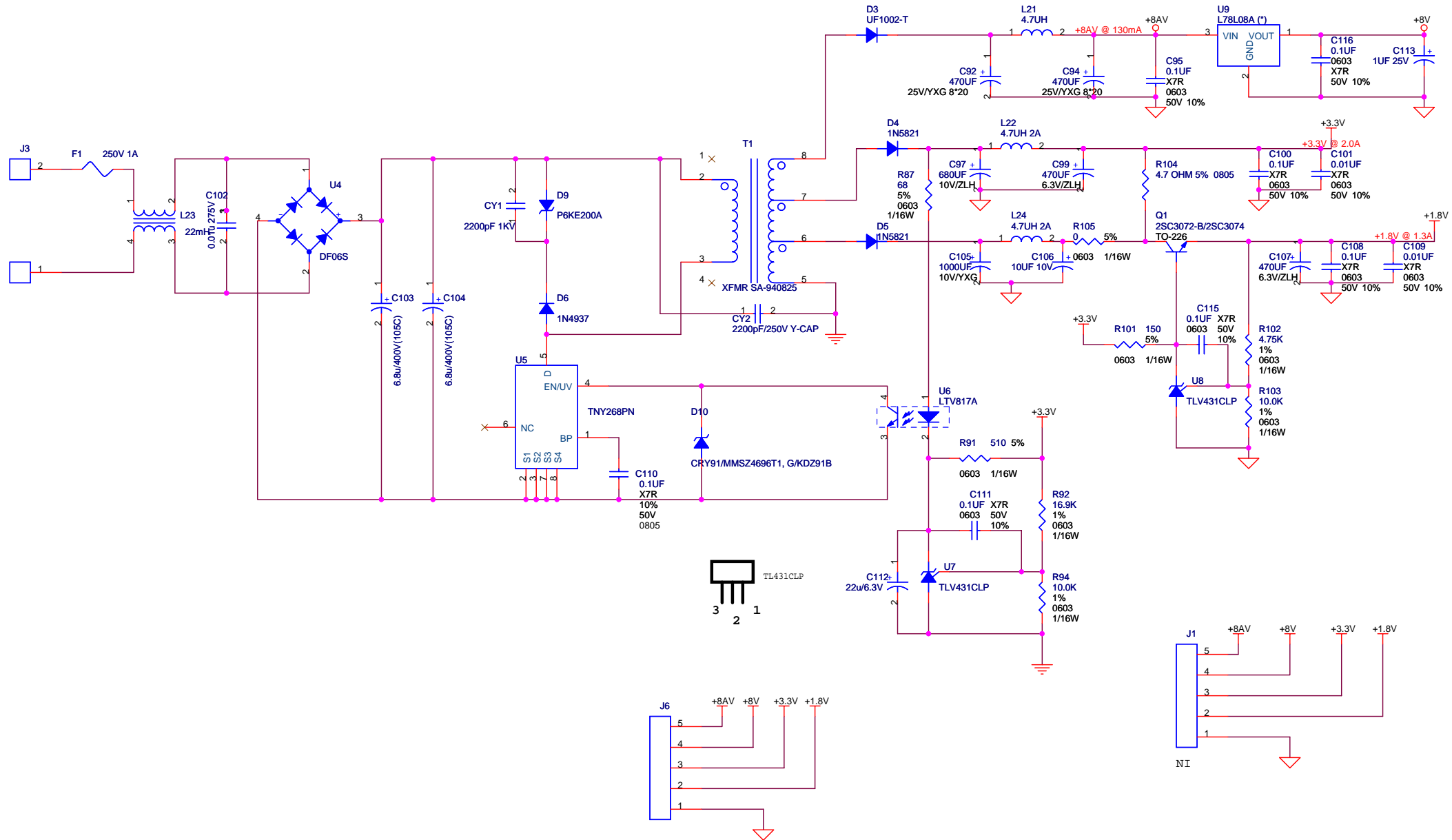
ASOKA-USA, CORPORATION		
558 PILGRIM DRIVE, UNIT H FOSTER CITY, CA 94404 1-650-286-1700		
File	SM5560 SIMPLE MODULE	
Size	Document Number	Rev
C	<Doc>	SCH-80-5560-012
Date	Monday, May 22, 2006	Sheet 3 of 3

DATE	REVISION	DESCRIPTION
05/25/2005	010	INITIAL RELEASE
11/7/2005	011	change output
06/06/2007	012	Add D10

CONFIDENTIAL

Copyright 2005. Asoka USA Corporation. All Rights Reserved.
 This document contains confidential information of Asoka USA Corporation. In consideration of the receipt of this document, recipient agrees not to reproduce or make this information available in any manner to persons outside the group directly responsible for evaluation of its contents.

ASOKA-USA, CORPORATION		
558 PILGRIM DRIVE, UNIT H FOSTER CITY, CA94404 1-650-286-1700		
Title PM8030 POWER SUPPLY		
Size A	Document Number <Doc> SCH-80-8030-012	Rev 2
Date:	Wednesday, June 06, 2007	Sheet 1 of 2



NI = Not Install

CONFIDENTIAL

Copyright 2007. Asoka USA Corporation. All Rights Reserved. This document contains confidential information of Asoka USA Corporation. In consideration of the receipt of this document, recipient agrees not to reproduce or make this information available in any manner to persons outside the group directly responsible for evaluation of its contents.

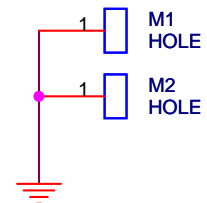
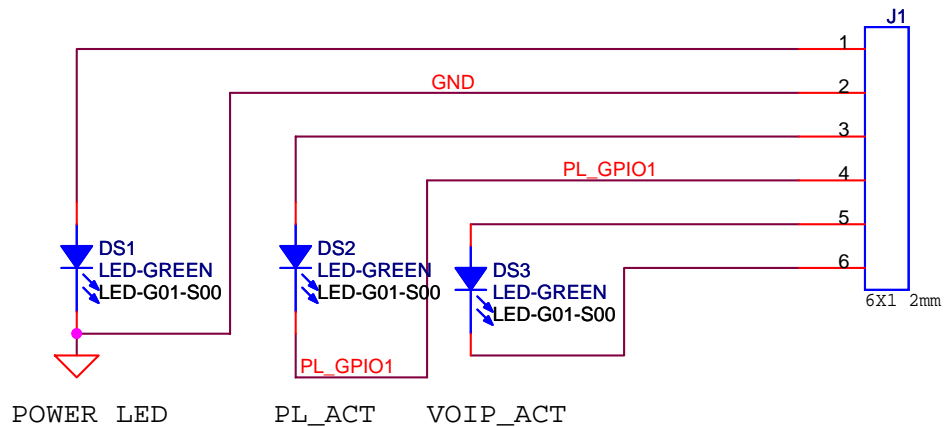
ASOKA-USA, CORPORATION		
558 PILGRIM DRIVE, UNIT H FOSTER CITY, CA 94404 1-650-286-1700		
Title PM8030 POWER SUPPLIER		
Size	Document Number	Rev
Custom<Doc>	SCH-80-8030-012	2
Date:	Friday, June 15, 2007	Sheet 2 of 2

DATE	REVISION	DESCRIPTION
12/14/2005	110	INITIAL RELEASE

CONFIDENTIAL

Copyright 2005. Asoka USA Corporation. All Rights Reserved. This document contains confidential information of Asoka USA Corporation. In consideration of the receipt of this document, recipient agrees not to reproduce or make this information available in any manner to persons outside the group directly responsible for evaluation of its contents.

ASOKA-USA, CORPORATION		
558 Pilgrim Drive, Unit H Foster City, CA 94044 1-286-1700		
Title PL8750-OTT's LED BOARD		
Size A	Document Number <Doc> SCH-80-8750-110	Rev
Date: Wednesday, December 14, 2005 Sheet 1 of 2		



CONFIDENTIAL

Copyright 2005. Asoka USA Corporation. All Rights Reserved. This document contains confidential information of Asoka USA Corporation. In consideration of the receipt of this document, recipient agrees not to reproduce or make this information available in any manner to persons outside the group directly responsible for evaluation of its contents.

ASOKA-USA, CORPORATION

558 Pilgrim Drive, Unit H
Foster City, CA 94044
1-286-1700

Title

PL8750-OTT's LED BOARD

Size
A

Document Number
<Doc>

SCH-80-8750-110

Rev

Date: Wednesday, December 14, 2005

Sheet 2 of 2