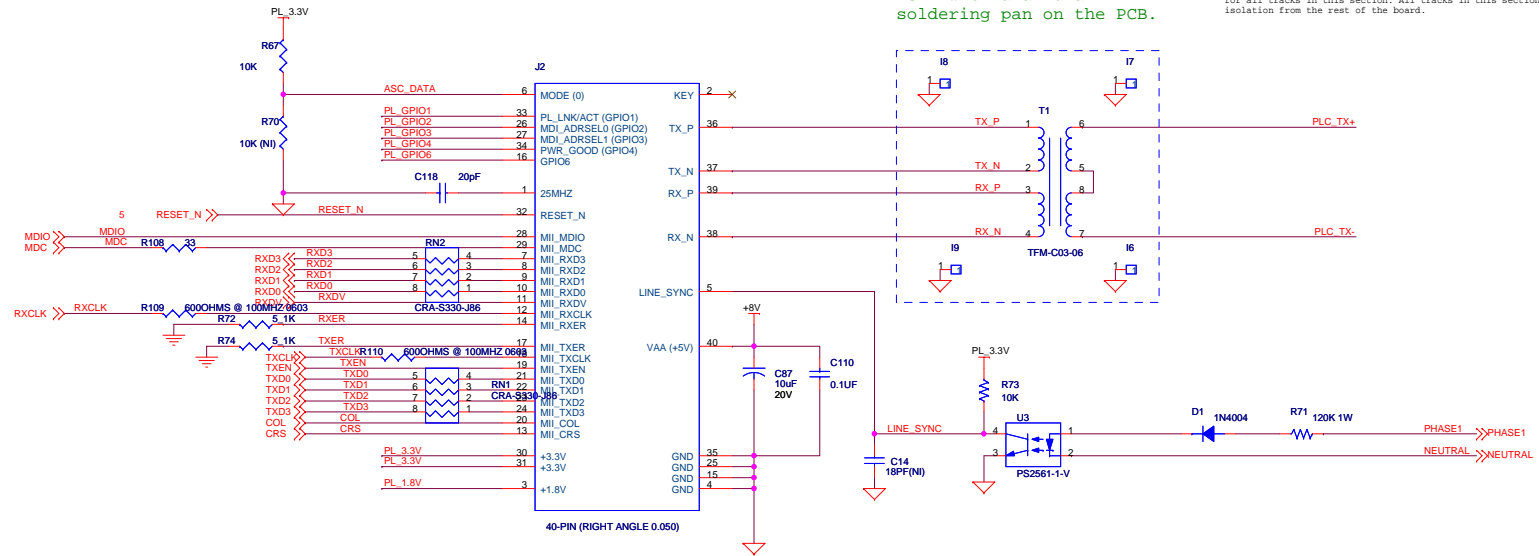
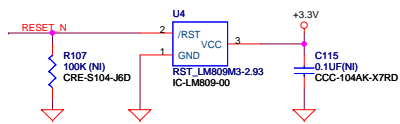
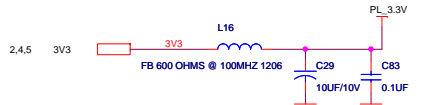
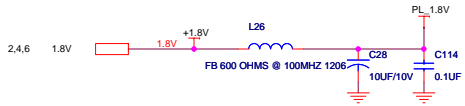


CONFIDENTIAL

Copyright 2008. Asoka USA Corporation. All Rights Reserved.
 This document contains confidential information of Asoka USA Corporation. In consideration of the receipt of this document, recipient agrees not to reproduce or make this information available in any manner to persons outside the group directly responsible for evaluation of its contents.

ASOKA-USA, CORPORATION		
558 Pilgrim Drive, Unit H Foster City, CA 94044 1-650-286-1700		
Title		3050
Size	Document Number	SCH-80-3050-01
Date:	Wednesday, November 19, 2008	Sheet 7 of 7

+3.3-volt supply should come up before the +1.8-volt supply

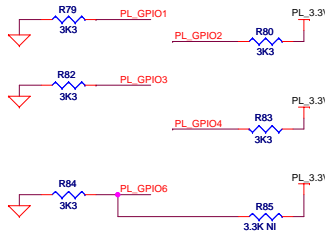
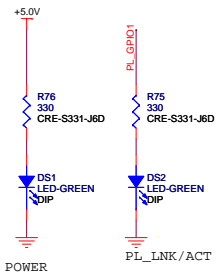


T1 need be shielded by a metal cover, and the cover need be soldered to GND with an annular soldering pan on the PCB.

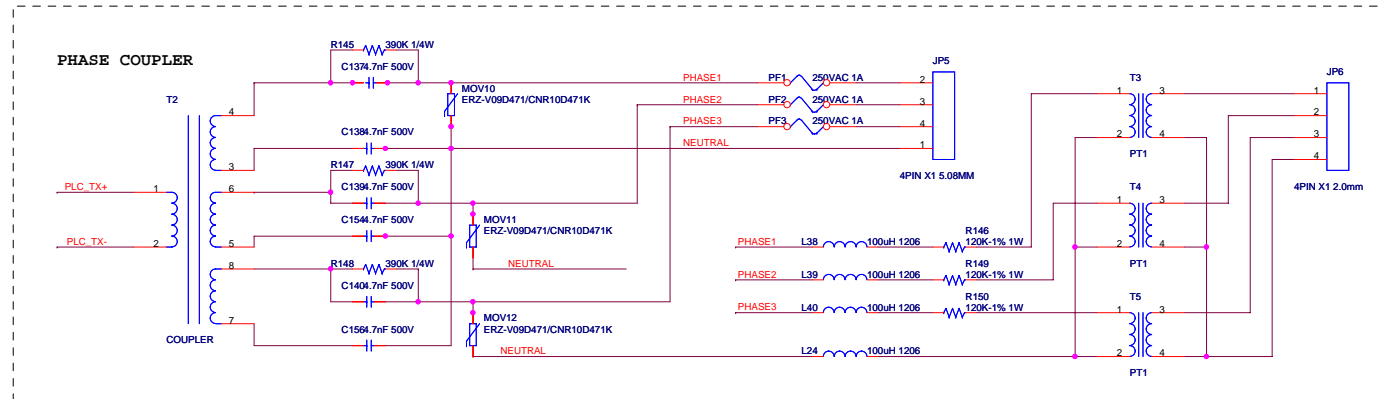
For 120 VAC:
Minimum copper to copper spacing is 0.070" and minimum track width is 0.010" for all tracks in this section. All tracks in this section require 0.130" isolation from the rest of the board.

For 240 VAC:
Minimum copper to copper spacing is 0.096" and minimum track width is 0.010" for all tracks in this section. All tracks in this section require 0.192" isolation from the rest of the board.

HIGH VOLTAGE AREA



Install R13 instead of R12 if host is to download MAC firmware



CONFIDENTIAL

Copyright 2005. Asoka USA Corporation. All Rights Reserved. This document contains confidential information of Asoka USA Corporation. In consideration of the receipt of this document, recipient agrees not to reproduce or make this information available in any manner to persons outside the group directly responsible for evaluation of its contents.

ASOKA-USA, CORPORATION
558 PILGRIM DRIVE, UNIT H
FOSTER CITY, CA 94404
1-650-286-1700

Title	3050		Rev
Size	Document Number	SCH-80-3050-01	C
Customer Doc#			
Date:	Wednesday, November 19, 2008	Sheet	2 of 7