

V2 CLESS
Pictures of equipment
Internal views



© Copyright 2010 Parkeon. All rights reserved.

Parkeon reserves all proprietary rights relating to the contents of this document. Parkeon Reserves all rights over usage, reproduction, representation, marketing, translation, adaptation Or modification, and generally all rights over present and future utilisation by any means, for any Purpose and in any territory, throughout the period of protection. All use of the contents of this Document requires the prior written permission of Parkeon. Parkeon reserves the right to change data, drawings and descriptions without prior notice. Certain characteristics may vary according to customer requirements and do not represent a commitment by Parkeon.

Parkeon UK Ltd.

Membrain House
Ferndown Industrial Estate
Wimborne, Dorset
BH21 7PP – United Kingdom
Phone +44 1202 850927 - Fax +44 1202 850903

Parkeon Inc.

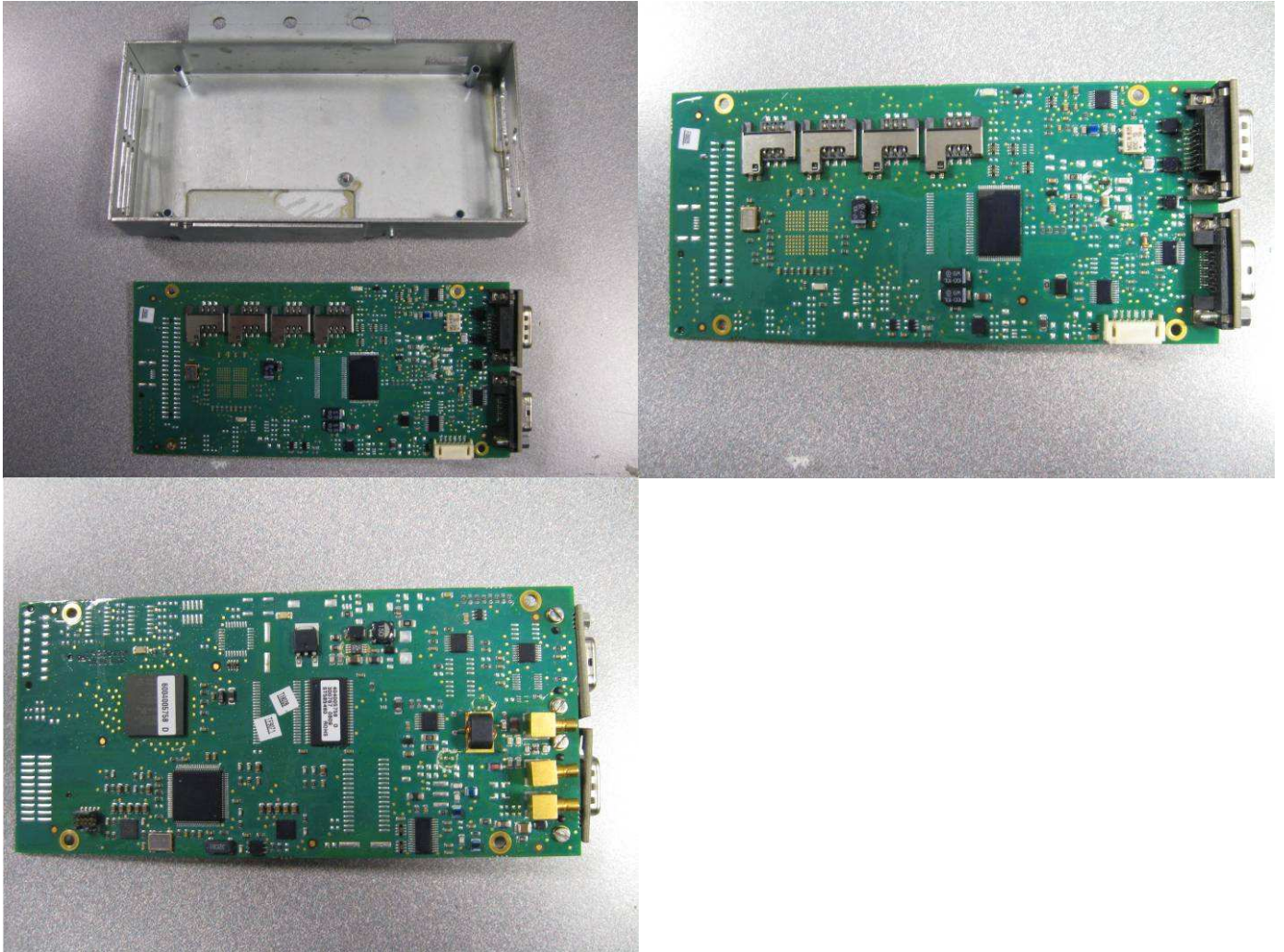
40 Twosome Drive, Unit 7
Moorestown
NJ 08057 – USA
Phone +1 856 234 8000 - Fax +1 856 234 7178

Parkeon S.A.S

Parc La Fayette, 6 rue Isaac Newton, 25075 Besançon Cedex 9 - France
Phone +33 (0)3 81 54 56 00 – Fax +33 (0)3 81 54 49 96
Head office : Le Barjac, 1 boulevard Victor, 75015 Paris - France
Parkeon S.A.S au capital de 30.382.146 euros
444 719 272 R.C.S Paris

Printed in France.

1. Module Lect V2 CLESS



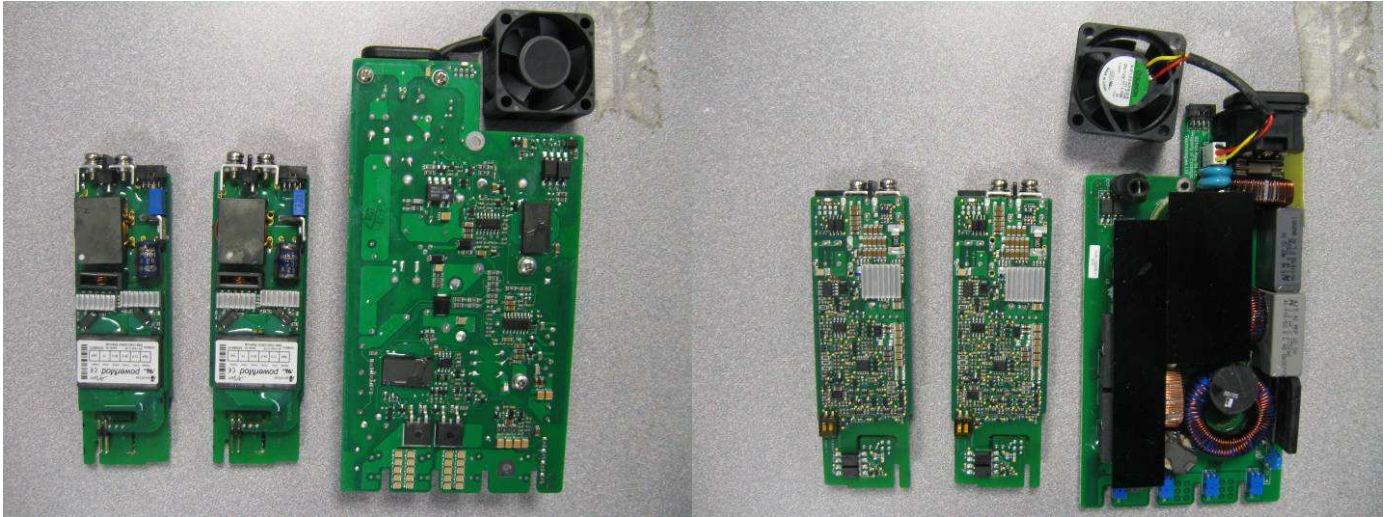
General Views

2. Antenne V2 CLESS Borne VFX



General Views

3. Excelsys XLB4400 power module



General Views