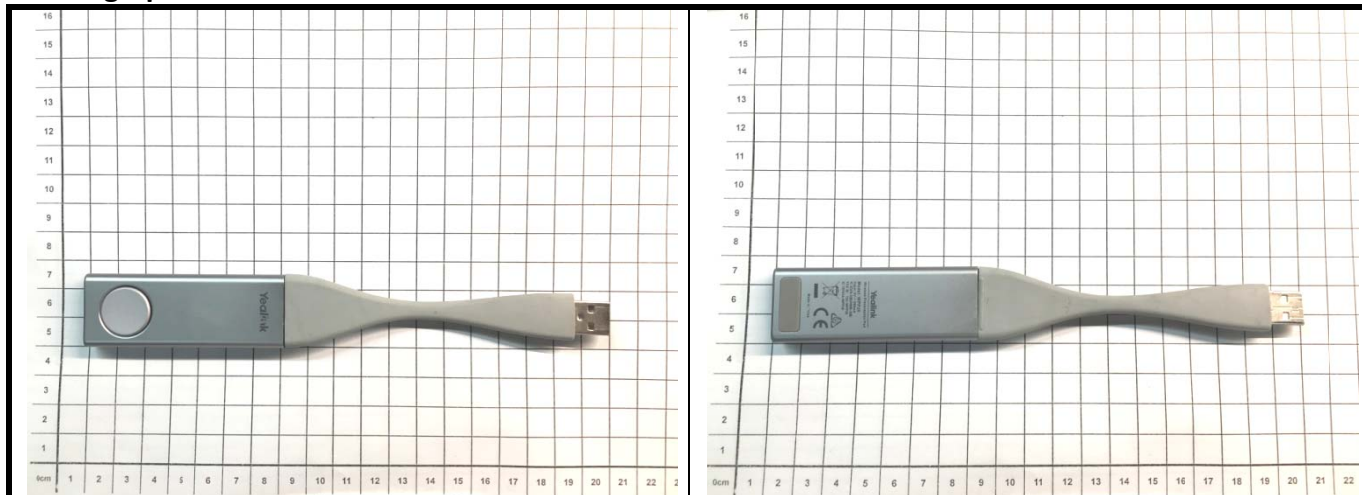
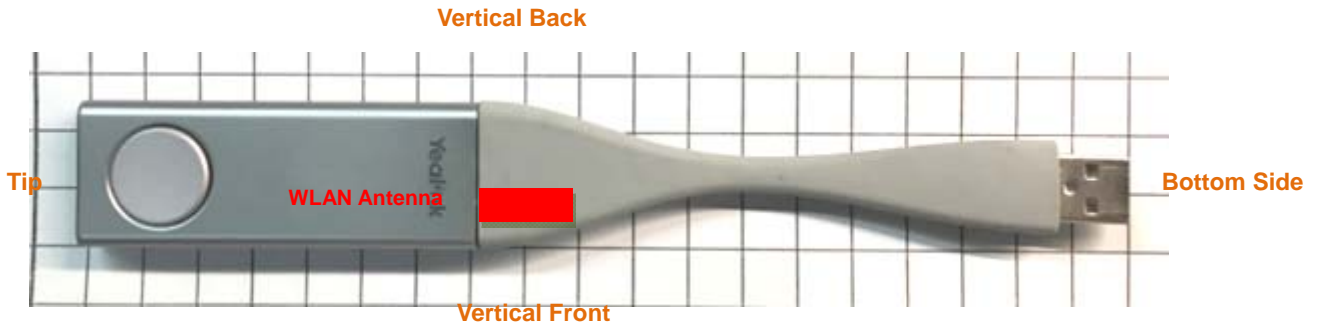


<Photographs of EUT>



<Antenna Location>



< USB Horizontal Up View >

The separation distance for antenna to edge:

Antenna	To Vertical Front (mm)	To Vertical Back (mm)	To Tip (mm)
WLAN / BT	5	15	70

<Photographs of SAR Setup>



USB Horizontal Up with 0.5cm Gap



USB Horizontal Down with 0.5cm Gap



USB Vertical Front with 0.5 cm Gap



USB Vertical Back with 0.5 cm Gap