

# FCC TEST REPORT

Under:  
FCC Part 15, Class B

Prepared For:  
**YEALINK(XIAMEN) NETWORK TECHNOLOGY  
CO.,LTD**

309, 3th Floor, No.16, Yun Ding North Road, Huli District, Xiamen City, Fujian, P.R. China

<b>FCC ID: T2C-T19PE2</b>
<b>EUT: IP Phone</b>
<b>Model: SIP-T19P E2</b>

December 30, 2015 <b>Issue Date:</b>
Extension Report <b>Report Type:</b>
<i>Eric Guo</i> <b>Test Engineer: Eric Guo</b>
<i>Apollo Liu</i> <b>Review By: Apollo Liu / Manager</b>

## TABLE OF CONTENTS

<b>1. General Information .....</b>	<b>3</b>
1. 1 Notes.....	3
1. 2 Testing Laboratory.....	3
1. 3 Details of Applicant.....	3
1. 4 Application Details .....	3
1. 5 Test Item .....	3
1. 6 Test Standards.....	3
<b>2. Technical Test.....</b>	<b>4</b>
2. 1 Summary of Test Results .....	4
2. 2 Measurement Uncertainty.....	4
<b>3. Modifications .....</b>	<b>4</b>
<b>4. Conducted Power Line Test.....</b>	<b>5</b>
4. 1 Test Equipment.....	5
4. 2 Test Procedure .....	5
4. 3 Test Setup .....	5
4. 4 Configuration of The EUT.....	6
4. 5 EUT Operating Condition.....	7
4. 6 Conducted Power Line Emission Limits .....	7
4. 7 Conducted Power Line Test Result.....	8
<b>5. Radiated Emission Test.....</b>	<b>10</b>
5. 1 Test Equipment.....	10
5. 2 Test Procedure .....	10
5. 3 Radiated Test Setup .....	10
5. 4 Configuration of The EUT.....	11
5. 5 EUT Operating Condition.....	11
5. 6 Radiated Emission Limit .....	11
5. 7 Radiated Emission Test Result.....	12
<b>6. Photo of Testing.....</b>	<b>16</b>
6.1 Emission test view.....	16
6.2 Photograph - EUT.....	18
<b>7. FCC ID Label.....</b>	<b>25</b>
<b>8. Test Equipment.....</b>	<b>26</b>



## 2. Technical Test

### 2.1 Summary of Test Results

The EUT has been tested according to the following specifications:

Standard	Test Type	Result	Notes
FCC Part 15, Paragraph 15.107	Conducted Test	PASS	Complies
FCC Part 15, Paragraph 15.109	Radiated Test	PASS	Complies

### 2.2 Measurement Uncertainty

Where relevant, the following measurement uncertainty levels have been estimated for tests performed on the EUT as specified in CISPR 16-4-2:

Measurement	Frequency	Uncertainty
Conducted emissions	0.15MHz~30MHz	1.72
Radiated emissions	30MHz ~ 300MHz	3.88
Radiated emissions	300MHz ~1000MHz	3.86

This uncertainty represents an expanded uncertainty expressed at approximately the 95% confidence level using a coverage factor of k=2.

Consistent with industry standard (e.g. CISPR 22: 2006, clause 11, Measurement Uncertainty) determining compliance with the limits shall be base on the results of the compliance measurement. Consequently the measure emissions being less than the maximum allowed emission result in this be a compliant test or passing test.

The acceptable measurement uncertainty value without requiring revision of the compliance statement is base on conducted and radiated emissions being less than  $U_{CISPR}$  which is 3.6dB and 5.2dB respectively. KMO values (called  $U_{Lab}$  in CISPR 16-4-2) is less than  $U_{CISPR}$  as shown in the table above. Therefore, MU need not be considered for compliance.

## 3. Modifications

This product is an extension of original report under FCC ID: T2C-T19PE2

The applicant declare that our product IP Phone, the model SIP-T19P E2 and SIP-T19 E2 and SIP-T19G E2 are electrically identical, they have the same PCB layout and schematic, the only difference is the model SIP-T19P E2 and SIP-T19G E2 with POE circuit the model SIP-T19 E2 without POE circuit . SIP-T19P E2 was tested by KMO. We add one Adapter model and one main PCB board in the original reports this time, others are the same as before.

Below is the table for the change of the product with respect to the original one.

Modifications	Performance Checking
Add one power adapter mode name: YLPS050600A-EU	*AC Conducted Emissions *Radiated Emissions
Add one main PCB board	*AC Conducted Emissions *Radiated Emissions

## 4. Conducted Power Line Test

### 4.1 Test Equipment

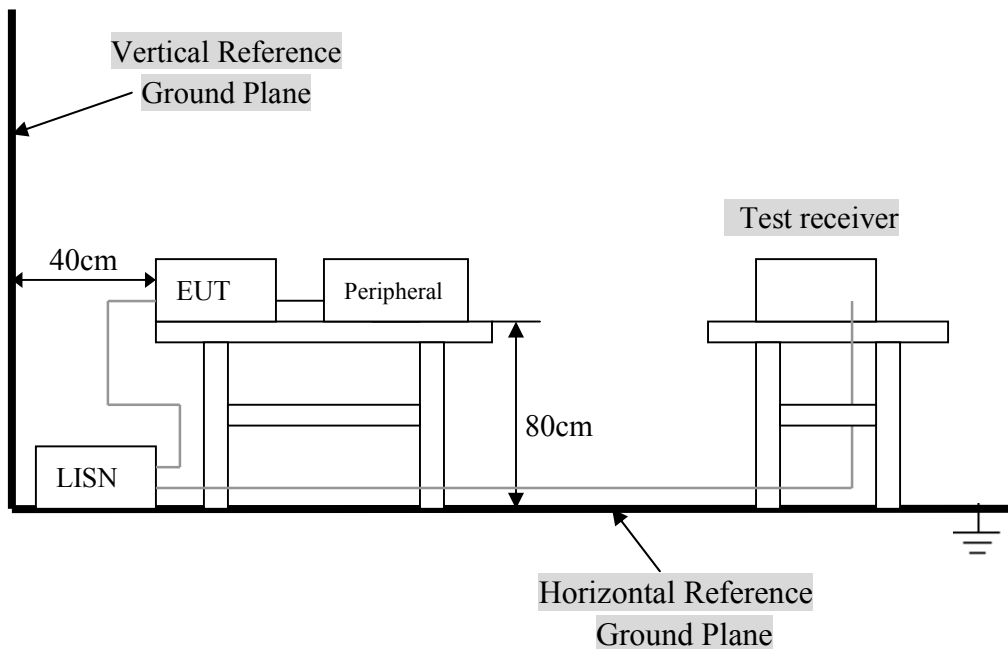
Please refer to Section 8 this report.

### 4.2 Test Procedure

The EUT and simulators are connected to the main power through a line impedance stabilization network (L.I.S.N.). This provides a 50 ohm/50uH coupling impedance for the measuring equipment. The peripheral devices are also connected to the main power through a LISN that provides a 50ohm/50uH coupling impedance with 50ohm termination.

Both sides of A.C. line are checked for maximum conducted interference. In order to find the maximum emission., the relative positions of equipment and all of the interface cables must be changed according to ANSI C63.4:2014 on conducted measurement. Conducted emissions were investigated over the frequency range from 0.15MHz to 30MHz using a receiver bandwidth of 9kHz.

### 4.3 Test Setup



For the actual test configuration, Please refer to the related items – Photos of Testing.

### 4.4 Configuration of The EUT

The EUT was configured according to ANSI C63.4:2014. All interface ports were connected to the appropriate peripherals. All peripherals and cables are listed below.

#### A. EUT

Device	Manufacturer	Model #	FCC ID
IP Phone	Same as applicant	SIP-T19P E2	T2C-T19PE2

#### B. Internal Devices

Device	Manufacturer	Model #	FCCID / DoC
N/A			

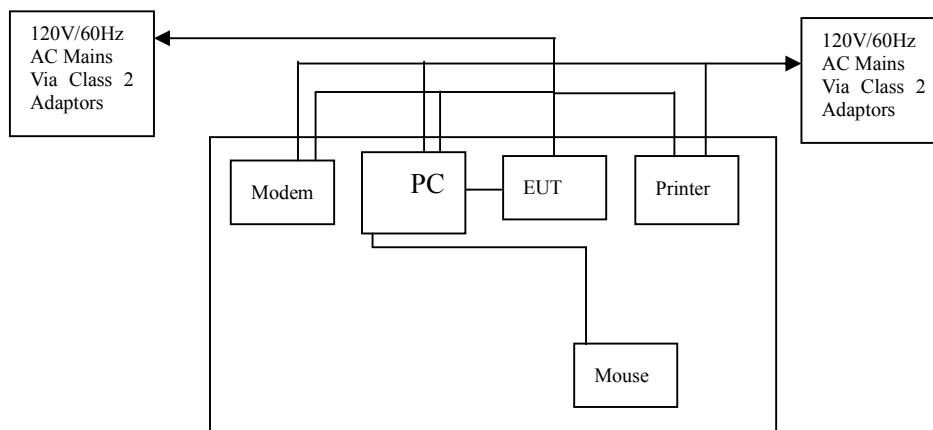
#### C. Peripherals

Device	Manufacturer	Model # Serial #	FCC ID/ DoC	Cable
Printer	HP	HP930C	DoC	1.5m unshielded power cord 1.2m unshielded data cable.
Modem	GVC	N/A	DoC	1.5m unshielded power cord 1.2m unshielded data cable.
Notebook	DELL	PP10L	DoC	1.5m unshielded power cord
PC	Dell	2400n	DoC	1.5m unshielded power cord

### 4. 5 EUT Operating Condition

Operating condition is according to ANSI C63.4:2014.

- A. Setup the EUT and simulators as shown on follow.
- B. Enable RF signal and confirm EUT active.
- A. Modulate output capacity of EUT up to specification.



### 4. 6 Conducted Power Line Emission Limits

Frequency Range (MHz)	Class A QP/AV (dBuV)	Class B QP/AV (dBuV)
0.15 – 0.5	79/66	66 –56/56 –46
0.5 – 5.0	73/60	56/46
5.0 – 30	73/60	60/50

Note: In the above table, the tighter limit applies at the band edges.

### 4.7 Conducted Power Line Test Result

Product	: IP Phone	Test Mode	: Normal Link / Auto
Test Item	: Conducted Emission Data	Temperature	: 25 °C
Test Voltage	: DC 12V/POE	Humidity	: 56%RH
Test Result	: <b>PASS</b>	Adapter Model	:

The frequency spectrum from 0.15 MHz to 30 MHz was investigated. All readings are quasi -peak values with a resolution bandwidth of 9 KHz.

- Temperature : 26 °C
- Humidity : 53 % RH

Adapter model: YLPS050600C-US

FCC 15 Class B										
Frequency (MHz)	Read Level (dBuV)		Factor (dB)	Emission (dBuV)		Line/Neutral	Limit (dBuV)		Margin (dBuV)	
	QP	AV		QP	AV		QP	AV	QP	AV
0.166	34.04	19.55	10.30	44.34	29.85	Line	65.16	55.16	-20.82	-25.31
0.150	37.78	24.81	10.30	48.08	35.11	Neutral	66.00	56.00	-17.92	-20.89
0.182	35.38	22.72	10.30	45.68	33.02	Line	64.39	54.39	-18.71	-21.37
0.154	34.87	22.91	10.30	45.17	33.21	Neutral	65.78	55.78	-20.61	-22.57
0.210	32.92	21.64	10.30	43.22	31.94	Line	63.21	53.21	-19.99	-21.27
0.170	31.46	19.54	10.30	41.76	29.84	Neutral	64.96	54.96	-23.20	-25.12
FCC 15 Class B										

Note: NF = No Significant Peak was Found.

POE

FCC 15 Class B										
Frequency (MHz)	Read Level (dBuV)		Factor (dB)	Emission (dBuV)		Line/Neutral	Limit (dBuV)		Margin (dBuV)	
	QP	AV		QP	AV		QP	AV	QP	AV
0.154	34.78	22.31	10.30	45.08	32.61	Line	65.78	55.78	-20.70	-23.17
0.162	39.69	25.98	10.30	49.99	36.28	Neutral	65.36	55.36	-15.37	-19.08
0.162	39.37	26.05	10.30	49.67	36.35	Line	65.36	55.36	-15.69	-19.01
0.166	33.62	21.58	10.30	43.92	31.88	Neutral	65.16	55.16	-21.24	-23.28
0.198	35.89	23.81	10.30	46.19	34.11	Line	63.69	53.69	-17.50	-19.58
0.222	34.05	22.61	10.30	44.35	32.91	Neutral	62.74	52.74	-18.39	-19.83
FCC 15 Class B										

Note: NF = No Significant Peak was Found.

Note:

- 1.Uncertainty in conducted emission measured is <+/-2dB.
- 2.The emission levels of other frequencies were very low against the limit.
- 3.All Reading Levels are Quasi-Peak and Average value.
- 4.Emission = Meter Reading + Factor; Factor = Insertion Loss + Cable Loss.
- 5.Margin Value = Emission Level - Limit Value.



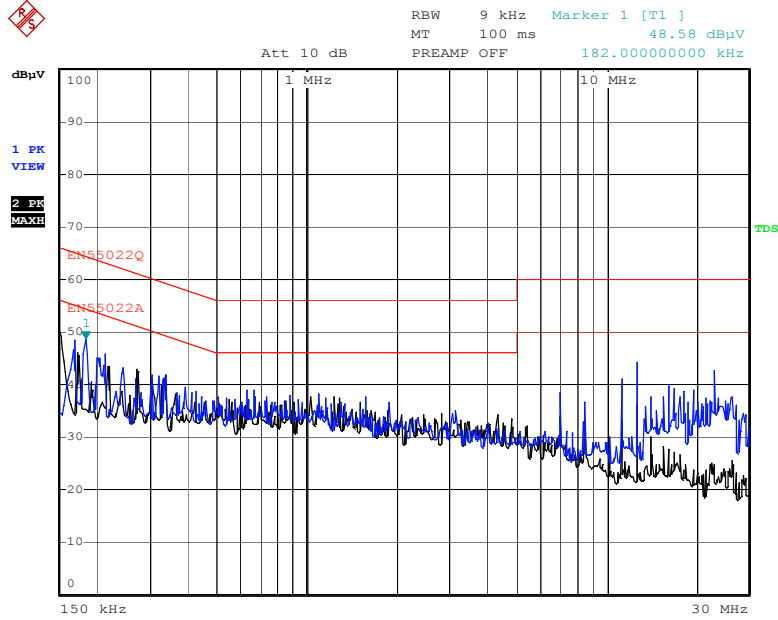
**Conducted Emission**

**FCC 15.107**

Test Specification: LINE&NEUTRAL

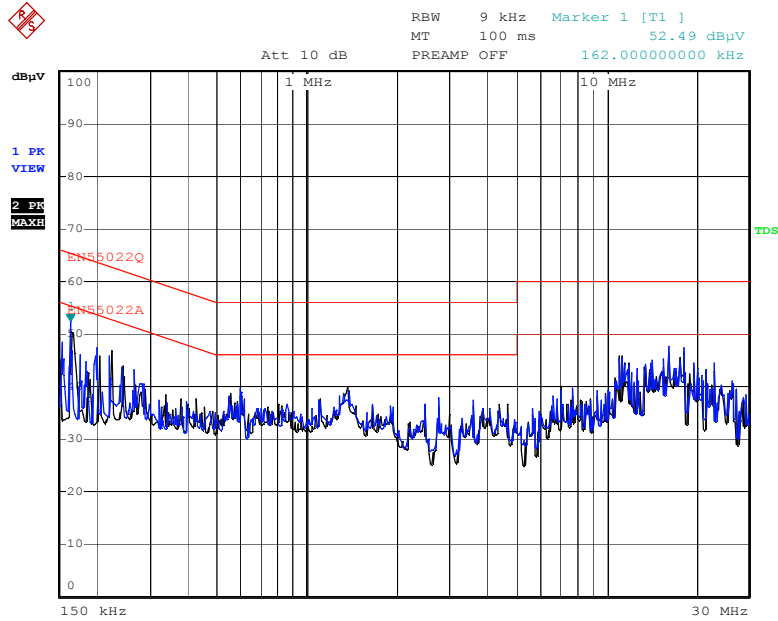
Comment:

Adapter model: YLPS050600C-US



Date: 29.DEC.2015 09:17:26

**POE**



Date: 29.DEC.2015 13:34:29

## 5. Radiated Emission Test

### 5.1 Test Equipment

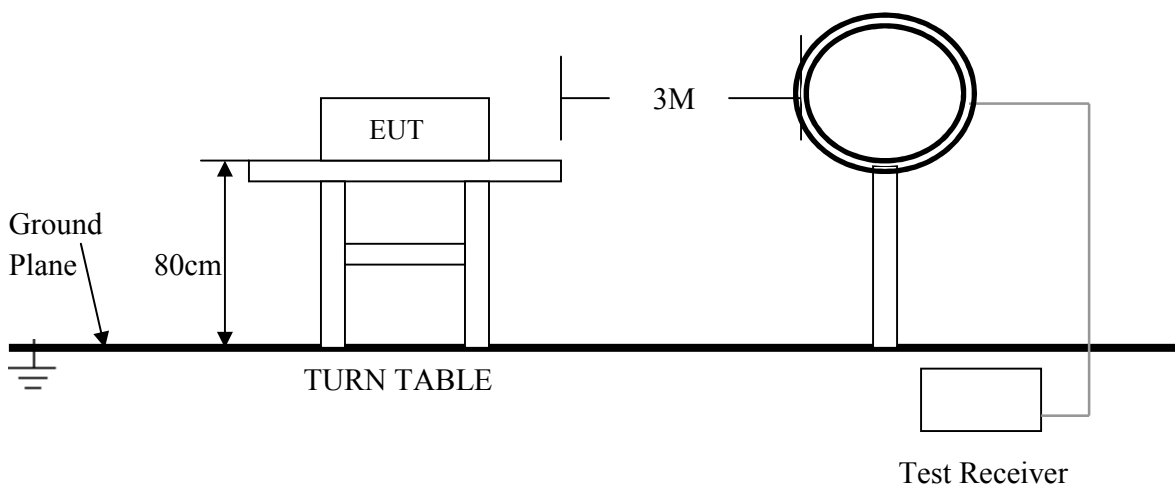
Please refer to Section 8 this report.

### 5.2 Test Procedure

1. The EUT was tested according to ANSI C63.4:2014.
2. The EUT, peripherals were put on the turntable which table size is 1m x 1.5 m, table high 0.8 m, and which is 1.5 m high for above 1 GHz. All set up is according to ANSI C63.4:2014 .
3. The frequency spectrum from 9 kHz to 25 GHz was investigated. All readings from 9 kHz to 150 kHz are quasi-peak values with a resolution bandwidth of 200 Hz. All readings from 150 kHz to 30 MHz are quasi-peak values with a resolution bandwidth of 9 KHz. All readings from 30 MHz to 1 GHz are quasi-peak values with a resolution bandwidth of 120 KHz. All readings are above 1 GHz , peak values with a resolution bandwidth of 1 MHz . Measurements were made at 3 meters.
4. The emissions from the EUT were measured continuously at every azimuth by rotating the turntable. The Receiving antenna high is varied from 1 m to 4 m high to find the maximum emission for each frequency. Emissions below 30MHz were measured with a loop antenna while emission above 30MHz were measured using a broadband E-field antenna.
5. Maximizing procedure was performed on the six (6) highest emissions to ensure EUT compliance is with all installation combinations. All data was recorded in the peak detection mode. Quasi-peak readings was performed only when an emission was found to be marginal (within -4 dB of specification limit), and are distinguished with a "QP" in the data table.
6. Each emission was to be maximized by changing the polarization of receiving antenna both horizontal and vertical. In order to find out the max. emission, the relative positions of this transmitter(EUT) was rotated through three orthogonal axes according to the requirements in Section 8 and 13 of ANSI C63.4:2014

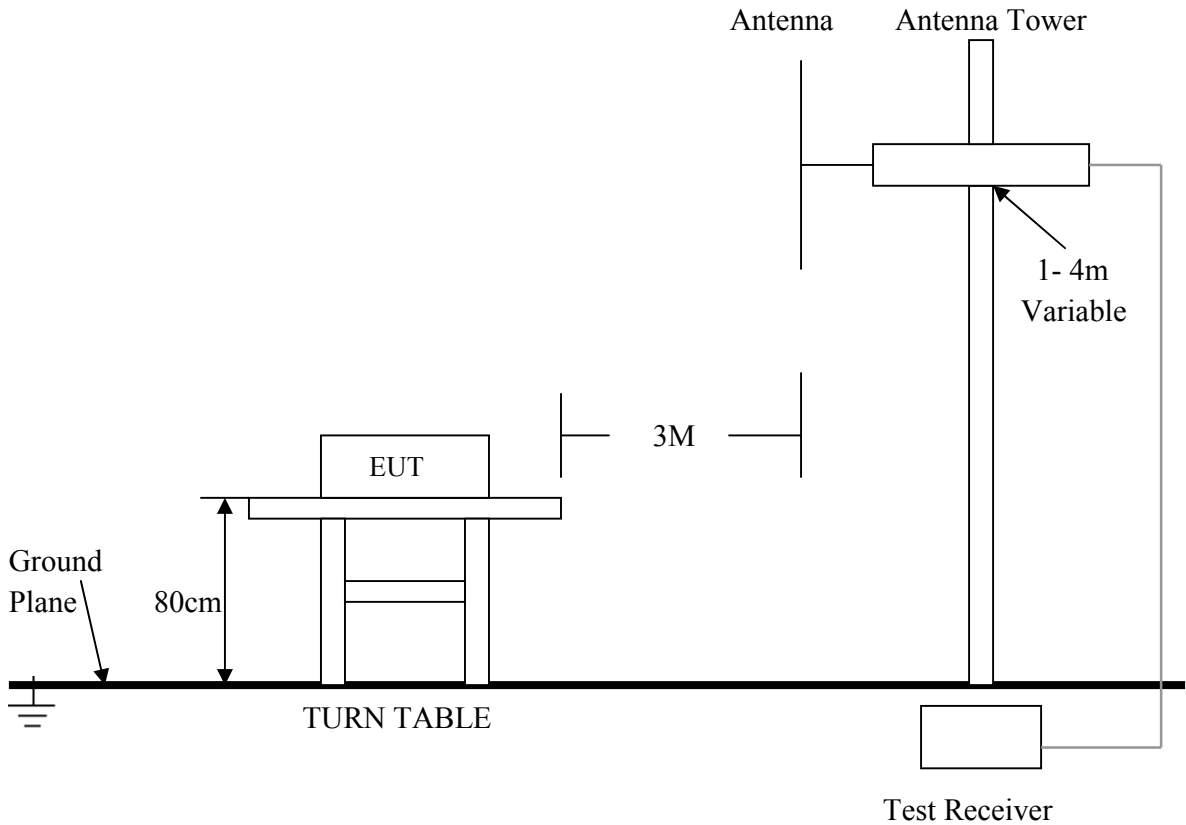
### 5.3 Radiated Test Setup

For Frequencies below 30 MHz



For the actual test configuration , please refer to the related items – Photos of Testing

**For Frequencies above 30 MHz**



For the actual test configuration , please refer to the related items – Photos of Testing

**5. 4 Configuration of The EUT**

Same as section 4.4 of this report

**5. 5 EUT Operating Condition**

Same as section 4.5 of this report

**5. 6 Radiated Emission Limit**

All emission from a digital device, including any network of conductors and apparatus connected thereto, shall not exceed the level of field strength specified below:

Frequencies in restricted band are complied to limit on Paragraph 15.109.

Frequency (MHz)	Distance (m)	Field Strength (dBuV/m)
30 - 88	3	40.0
88 - 216	3	43.5
216 - 960	3	46.0
Above 960	3	54.0

**Note:**

1. In the emission tables above, the tighter limit applies at the band edges.
2. Distance refers to the distance between measuring instrument, antenna, and the closest point of any part of the device or system.
3. The lower limit shall apply at the transition frequencies.

### 5. 7 Radiated Emission Test Result

Product	: IP Phone	Test Mode	: Normal Link / Auto
Test Item	: Fundamental Radiated Emission Data	Temperature	: 25 °C
Test Voltage	: DC 12V/POE	Humidity	: 56%RH
Test Result	: <b>PASS</b>	Model	:

**For Frequency below 30MHz**

Freq. (MHz)	Emission (dBuV/m) QP Detector	HORIZ / VERT	Limits (dBuV/m)	Margin (dB)
N/A				
N/A				
N/A				
N/A				
N/A				
N/A				

- Note:**
- (1) All Readings below 1GHz are Quasi-Peak, above are performed with peak and/or average measurements as necessary.
  - (2) "N/A" remark, if no specific emissions from the EUT are recorded (ie: margin>20dB from the applicable limit) and considered that's already beyond the background noise floor.
  - (3) Emission Level = Reading Level + Probe Factor + Cable Loss.

**For Frequency from 30MHz to 1GHz**

Adapter model: YLPS050600C-US

FCC 15 Class B						
Frequency (MHz)	Read Level (dBuV)	Factor (dB)	Emission (dBuV/m)	Horiz./ Vert.	Limit (dBuV/m)	Margin (dB)
266.680	25.76	14.93	40.69	Horiz./	46.0	-5.31
88.920	21.80	9.69	31.48	Vert.	43.5	-12.02
350.000	19.04	17.13	36.16	Horiz./	46.0	-9.84
375.000	21.33	17.13	38.45	Vert.	46.0	-7.55
375.000	21.96	17.13	39.08	Horiz./	46.0	-6.92
466.760	10.10	20.12	30.21	Vert.	46.0	-15.79

POE

FCC 15 Class B						
Frequency (MHz)	Read Level (dBuV)	Factor (dB)	Emission (dBuV/m)	Horiz./ Vert.	Limit (dBuV/m)	Margin (dB)
266.720	22.00	14.93	36.93	Horiz./	46.0	-9.07
106.720	16.20	13.35	29.55	Vert.	43.5	-13.95
350.040	17.77	17.13	34.89	Horiz./	46.0	-11.11
250.000	17.08	14.93	32.01	Vert.	46.0	-13.99
375.000	20.06	17.13	37.18	Horiz./	46.0	-8.82
375.000	19.75	17.13	36.87	Vert.	46.0	-9.13

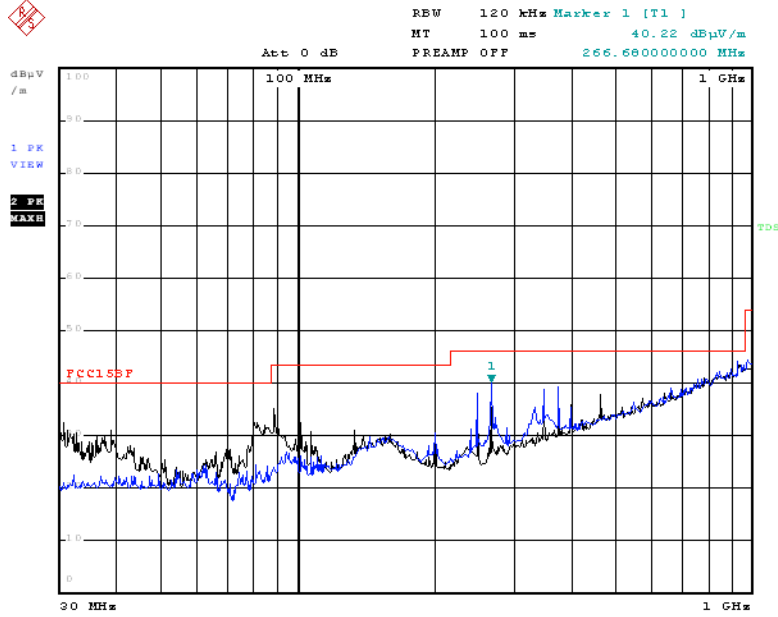
- Note:**
- (1) All Readings below 1GHz are Quasi-Peak, above are performed with peak and/or average measurements as necessary.
  - (2) "N/A" remark, if no specific emissions from the EUT are recorded (ie: margin>20dB from the applicable limit) and considered that's already beyond the background noise floor.
  - (3) Emission Level = Reading Level + Probe Factor + Cable Loss.

## Frequency above 1 GHz

FCC 15 Class B										
Frequency (MHz)	Read Level(dBuV)		Factor (dB)	Emission(dBuV/m)		Horiz./Vert.	Limit (dBuV/m)		Margin(dB)	
	PK	AV		PK	AV		PK	AV	PK	AV
2128.000	33.72	17.58	14.93	48.65	32.51	Horiz./	74.0	54.0	-25.35	-21.49
2048.000	31.26	17.78	13.35	44.61	31.13	Vert.	74.0	54.0	-29.39	-22.87
2325.600	31.69	16.30	17.13	48.81	33.42	Horiz./	74.0	54.0	-25.19	-20.58
2330.800	34.25	18.52	14.93	49.18	33.45	Vert.	74.0	54.0	-24.82	-20.55
2455.200	32.31	16.14	17.13	49.43	33.26	Horiz./	74.0	54.0	-24.57	-20.74
2429.200	33.41	16.47	17.13	50.53	33.59	Vert.	74.0	54.0	-23.47	-20.41
FCC 15 Class B										

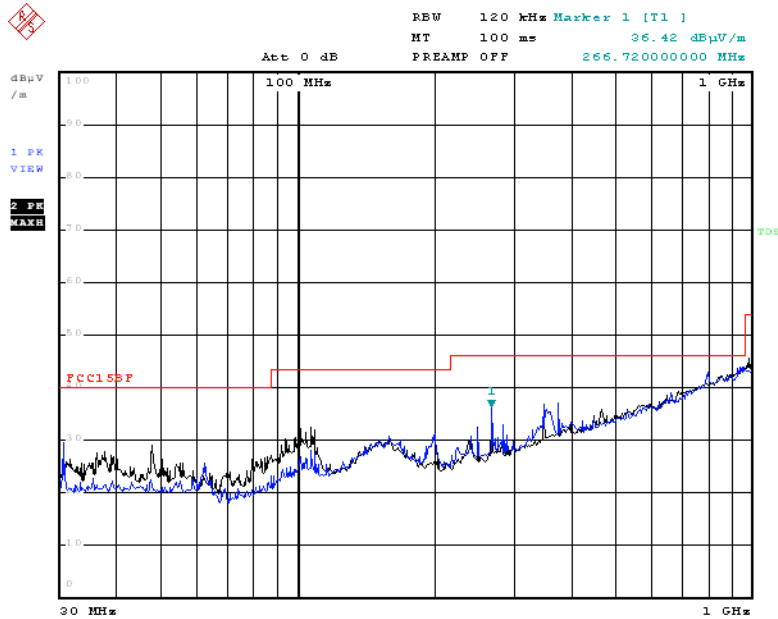
- Note:**
- (1) All Readings below 1GHz are Quasi-Peak, above are performed with peak and/or average measurements as necessary.
  - (2) Emission Level = Reading Level + Probe Factor + Cable Loss.

**Radiated Emission**  
**FCC 15.109**  
**For Frequency from 30MHz to 1GHz**  
**Adapter model: YLPS050600C-US**



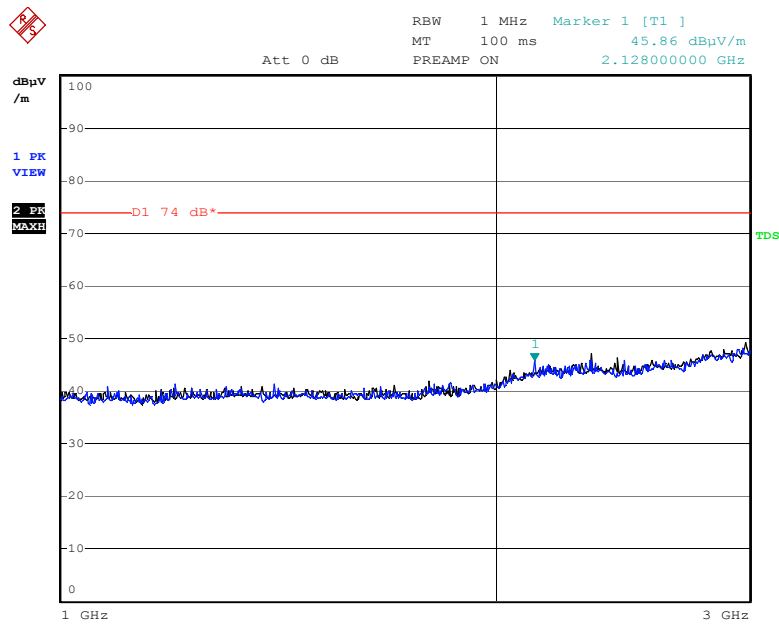
Date: 29.DEC.2015 14:38:11

**POE**



Date: 29.DEC.2015 15:49:26

**For Frequency above 1GHz**



Date: 29.DEC.2015 13:57:18

## 6. Photo of Testing

### 6.1 Emission test view

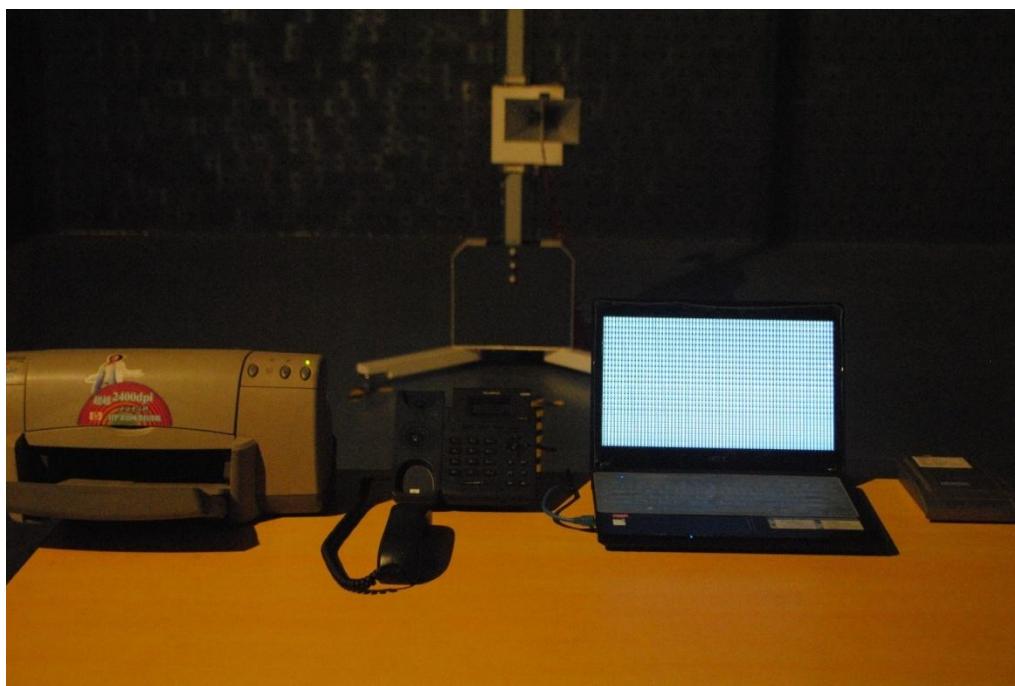




Radiated Emission test view (Frequency from 30MHz to 1GHz)

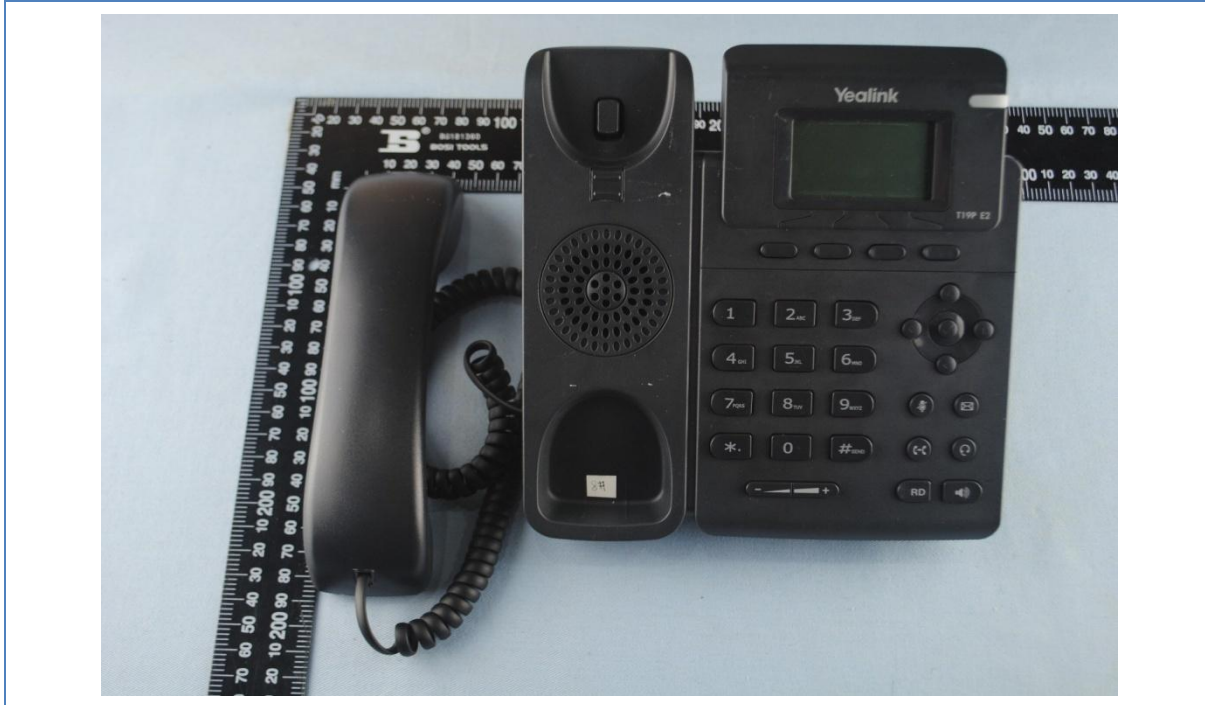


Radiated Emission test view (Frequency above 1GHz)



### 6.2 Photograph - EUT

EUT top view



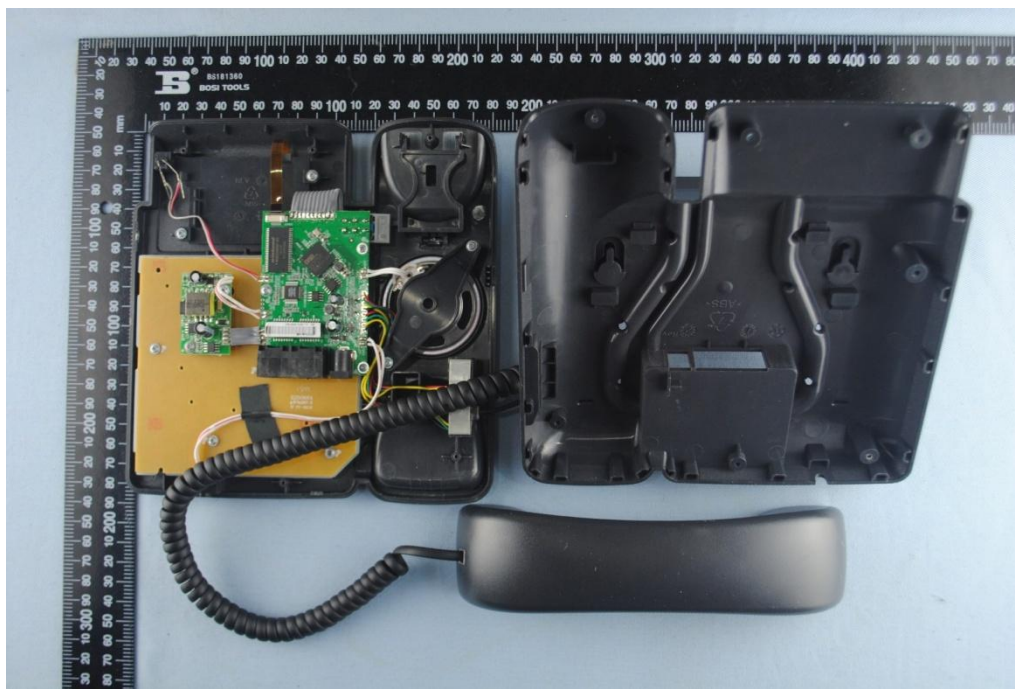


EUT bottom view

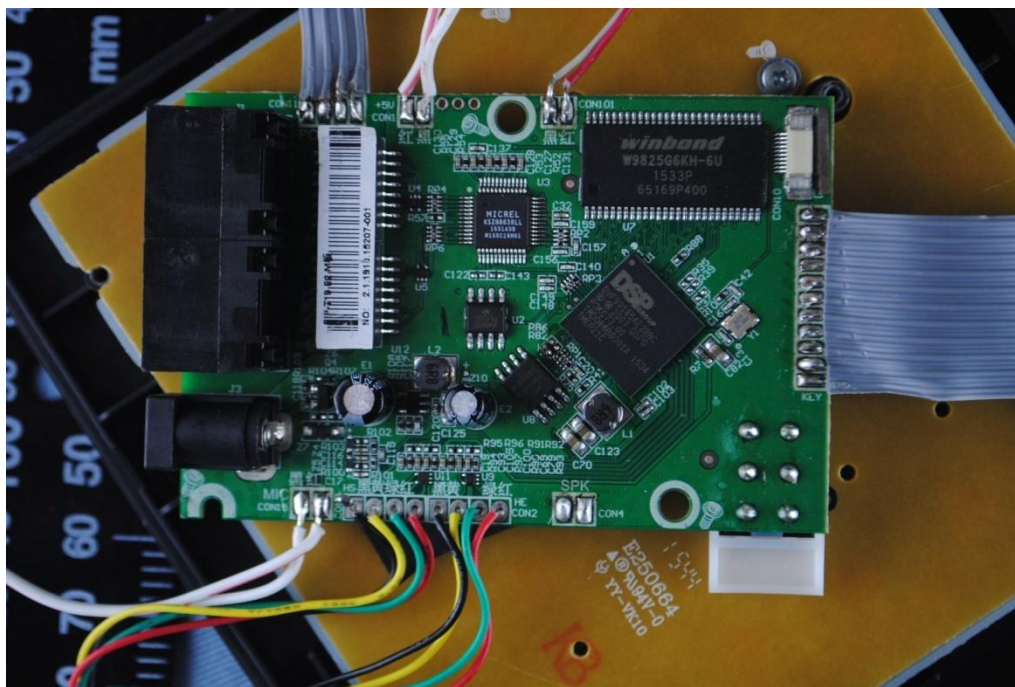


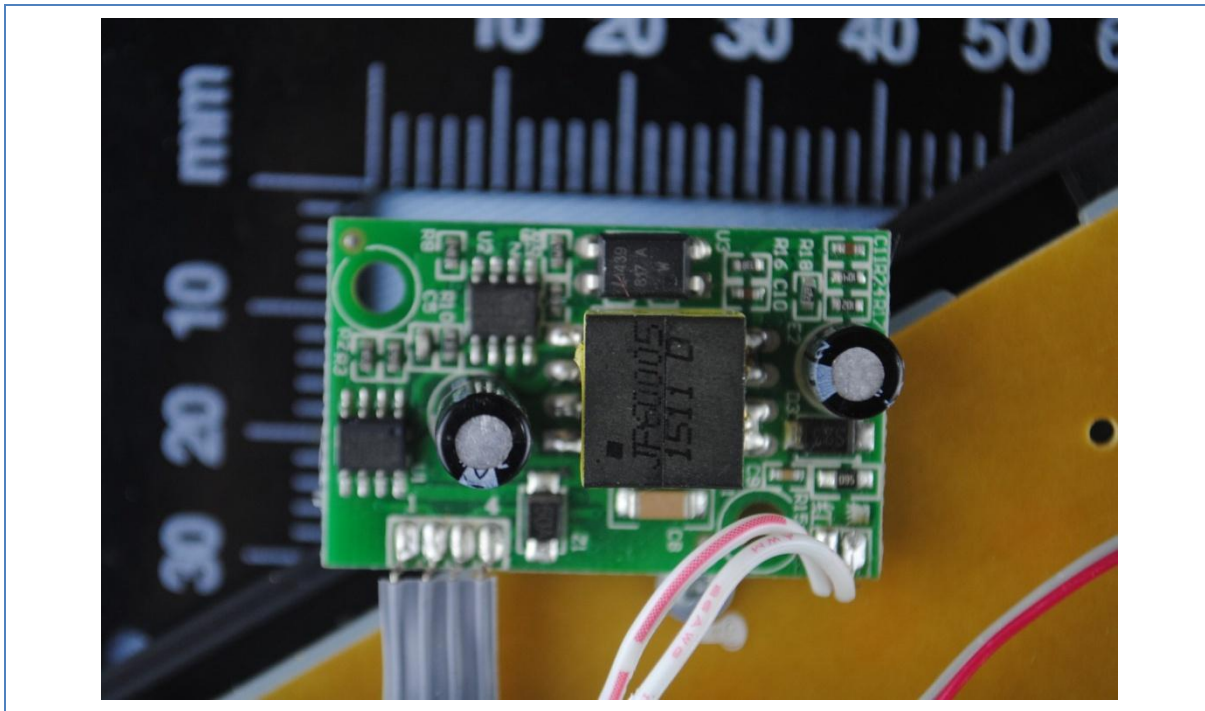


EUT inside whole view

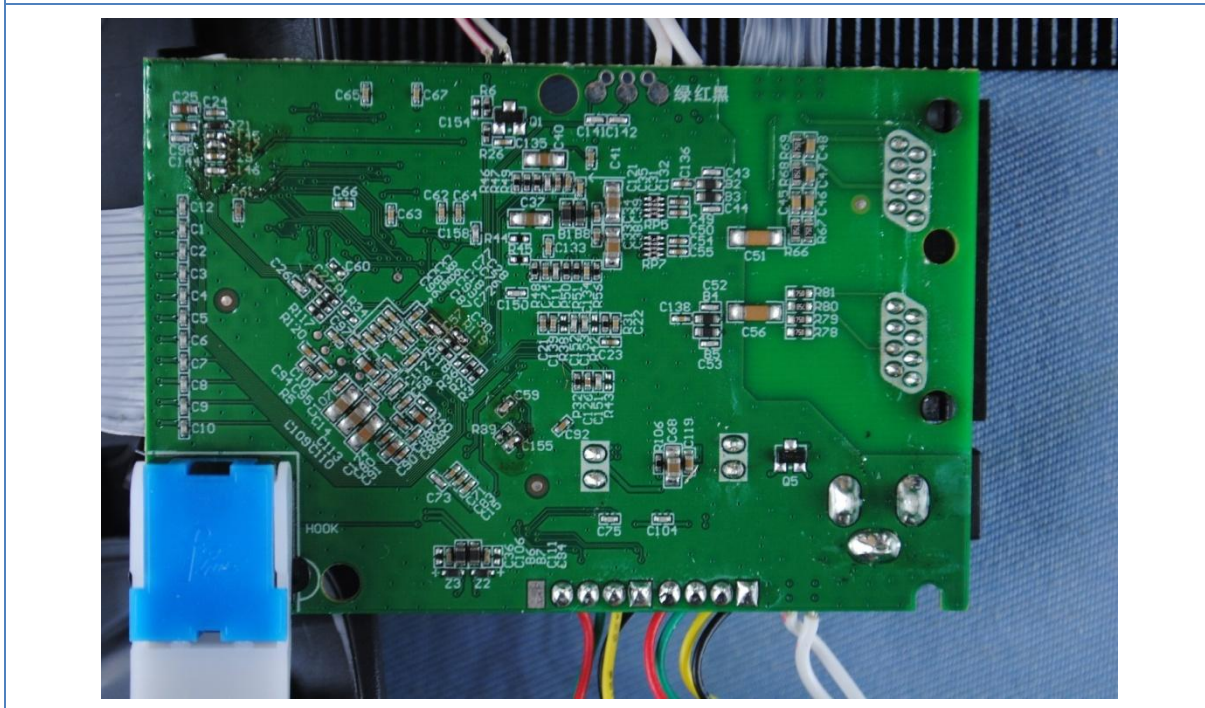


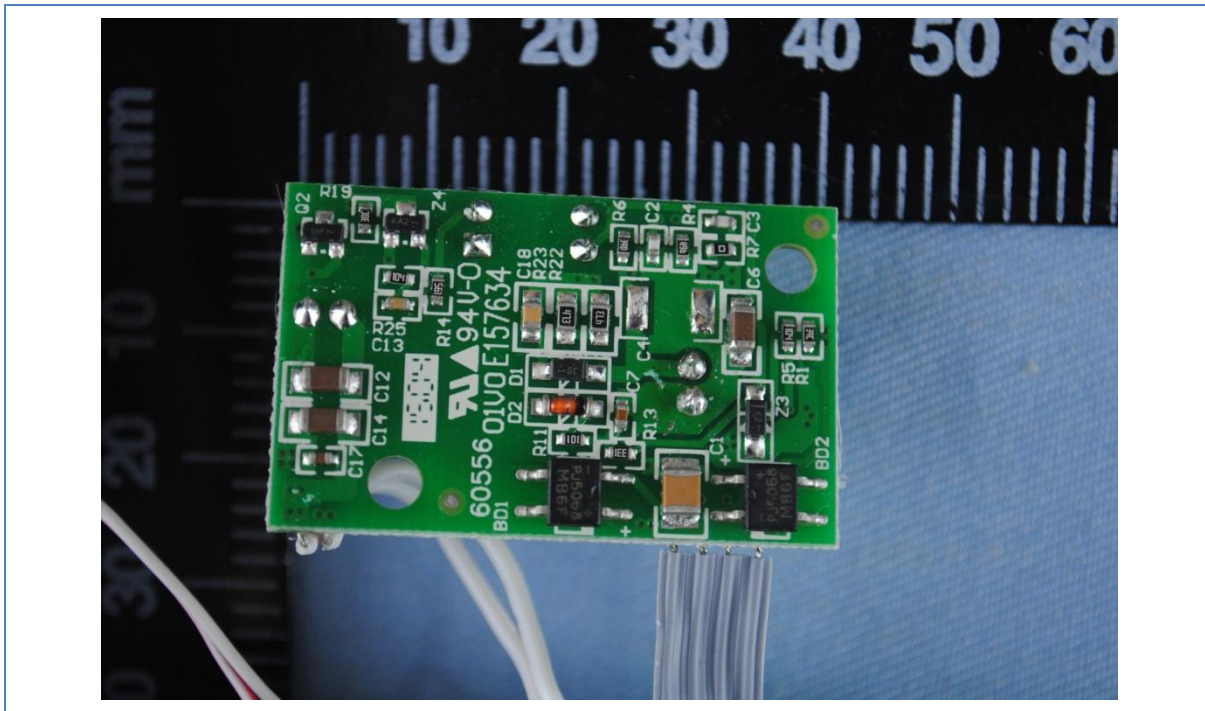
Main board component side





Main board solder side





FCC Adapter top view

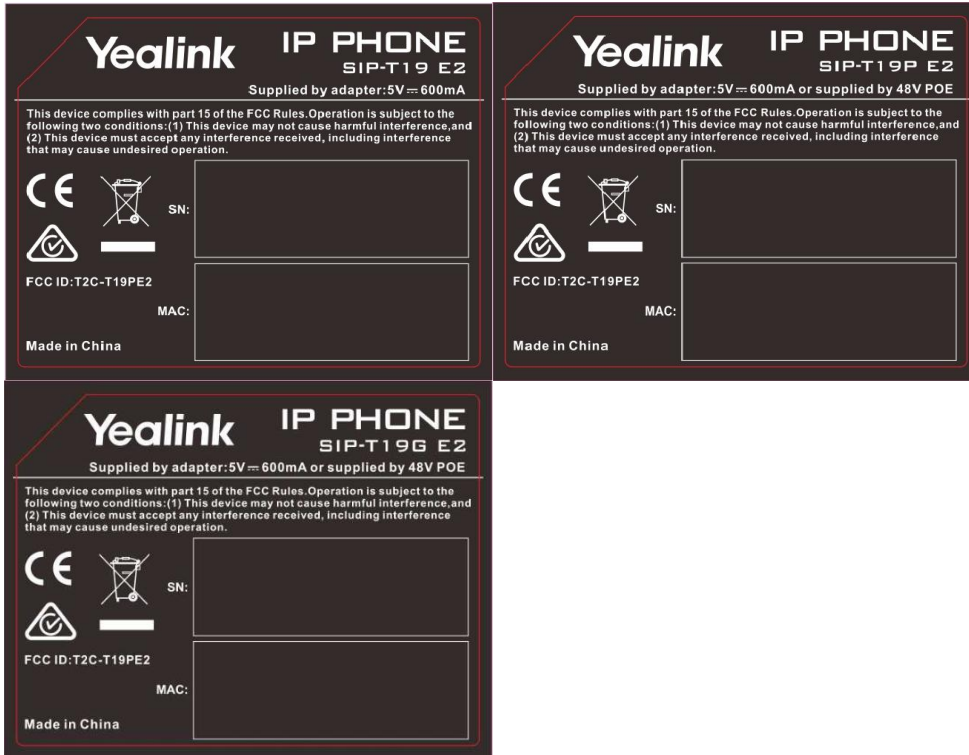


Adapter side view





### 7. FCC ID Label



The following note shall be conspicuously placed in the users manual: **“Operation is subject to the following two conditions: (1) this device may not cause interference, and (2) this device must accept any interference, including interference that may cause undesired operation of this device.”**

The Label must not be a stick-on paper label. The Label on these products must be permanently affixed to the product and readily visible at the time of purchase and must last the expected lifetime of the equipment not be readily detachable.



## 8. Test Equipment

The following test equipments were used during the radiated & conducted emission test:

Equipment/ Facilities	Manufacturer	Model #	Serial No.	Due Date
Turntable	Innco systems GmbH	CT-0801	KMO-SZ114	NCR
Antenna Tower	Innco systems GmbH	MM4000-PP	KMO-SZ115	NCR
Controller	Innco systems GmbH	CO2000	KMO-SZ116	NCR
Pre-Amplifier	Agilent	87405C	KMO-SZ155	Dec.6, 2016
Pre-Amplifier	Com-Power	PAM-840	KMO-SZ156	Dec.6, 2016
Horn Antenna	Com-Power	AH-840	KMO-SZ157	Dec.6, 2016
EMI Test Receiver	Rohde & Schwarz	ESPI7	KMO-SZ002	June 27, 2016
Spectrum Analyzer	Rohde & Schwarz	FSP40	KMO-SZ003	June 27, 2016
Signal Generator	FLUKE	PM5418+Y/C	KMO-SZ020	May 27, 2016
Loop Antenna	Rohde & Schwarz	HFH2-Z2	KMO-SZ004	August 19, 2018
Trilog-Super Broadband Antenna	SCHWARZBECK	VULB9161	KMO-SZ005	August 27, 2018
Trilog-Super Broadband Antenna	SCHWARZBECK	VULB9161	KMO-SZ006	August 19, 2018
Broad-Band Horn Antenna	SCHWARZBECK	BBHA 9120D	KMO-SZ007	August 19, 2018
Broad-Band Horn Antenna	SCHWARZBECK	BBHA 9120D	KMO-SZ008	August 19, 2018
AMN	Rohde & Schwarz	ESH3-Z5	KMO-SZ009	June 27, 2016
Pulse Limiter	SCHWARZBECK	VTSD 9561-F	KMO-SZ077	Nov.29, 2016
ISN	SCHWARZBECK	NTFM 8158 CAT3	KMO-SZ070	Nov.19, 2016
ISN	SCHWARZBECK	NTFM 8158 CAT5	KMO-SZ071	Nov.19, 2016
ISN	SCHWARZBECK	NTFM 8158 CAT6	KMO-SZ072	Nov.19, 2016
KMO Shielded Room	KMO	KMO-001	KMO-SZ036	NCR
Coaxial Cable with N-Connectors	SCHWARZBECK	AK9515H	KMO-SZ037	Sep.18, 2016
AC Power Source / Analyzer	Agilent	6813B	KMO-SZ166	July 22, 2016
Power Meter	Rohde & Schwarz	OSP-B157	KMO-HK015	Nov.6, 2016
Digital Radio Communication Tester	Rohde & Schwarz	CMD60	KMO-SZ169	April 10, 2016
Universal Radio Communication Tester	Rohde & Schwarz	CMU200	KMO-SZ170	April 10, 2016
Regulatory Test System 30 MHz to 40 GHz	Rohde & Schwarz	TS8997	KMO-HK015	Nov.6, 2016
Program Control Telephone Exchanger	Excelltel	CDX8000-M	KMO-SZ221	NCR
3m Anechoic Chamber	KMO	KMO-3AC	KMO-3AC-1	Nov.12, 2016
Temperature Chamber	TABAI	PSL-4GTW	N/A	Feb.10, 2016