

FCC TEST REPORT



Under
FCC 15 Subpart C, Paragraph 15.247
Operation within the bands 902–928 MHz, 2400–2483.5 MHz, and 5725–5850 MHz
DSS - Spread Spectrum Transmitter

Prepared For:

YEALINK (XIAMEN) NETWORK TECHNOLOGY CO., LTD.

309, 3rd Floor, No.16, Yun Ding North Road, Huli District, Xiamen City, Fujian, China

FCC ID: T2C-CPW90-BT
EUT: Bluetooth Wireless Microphone
Model: CPW90-BT

July 23, 2019 Issue Date:
Original Report Report Type:
 Test Engineer: Jacky Huang
 Review By: Apollo Liu / Manager

The test report consists 33 pages in total. It may be duplicated completely for legal use with the allowance of the applicant. It shall not be reproduced except in full, without the written approval of Ke Mei Ou Laboratory Corporation. The test result in the report only applied to the tested sample.

Table of Contents

1. General Information	4
1.1 Notes.....	4
1.2 Testing Laboratory.....	4
1.3 Details of Applicant.....	4
1.4 Application Details	4
1.5 Details of Manufacturer	4
1.6 Test Item.....	4
1.7 Applicable Standards.....	5
2. Technical Test	6
2.1 Summary of Test Results	6
2.2 Antenna Requirement.....	6
2.3 Measurement Uncertainty	6
3. EUT Modifications.....	6
4. Conducted Power Line Test	7
4.1 Test Equipment.....	7
4.2 Test Procedure.....	7
4.3 Test Setup.....	7
4.4 Configuration of the EUT	8
4.5 EUT Operating Condition.....	9
4.6 Conducted Power Line Emission Limits	9
4.7 Conducted Power Line Test Result	10
5. FCC Part 15.247 Requirements for FHSS Systems.....	12
5.1 Test Equipment.....	12
5.2 Test Procedure.....	12
5.3 Test Setup.....	12
5.4 Configuration of the EUT	12
5.5 EUT Operating Condition.....	12
5.6 Limit	13
5.7 Test Result.....	14
6. Transmitter Spurious Radiated Emission at 3 Meters.....	15
6.1 Test Equipment.....	15
6.2 Test Procedure.....	15
6.3 Test Setup.....	15
6.4 Configuration of the EUT	17
6.5 EUT Operating Condition.....	17
6.6 Limit	17
6.7 Test Result.....	18
7. Photos of Testing.....	22
8. Photographs – EUT.....	24
9. FCC ID Label.....	32
10. Test Equipment.....	33

Report Revision History

Report #	Version	Description	Issued Date
KSZ2019050601J01	Rev.01	Initial issue of report	June 24, 2019
KSZ2019050601J01	Rev.02	Update section 5.7 & 6.7	July 23, 2019

1. General Information

1.1 Notes

The test results of this report relate exclusively to the test item specified in 1.6. The KMO Lab does not assume responsibility for any conclusions and generalizations drawn from the test results with regard to other specimens or samples of the type of the equipment represented by the test item. The test report may only be reproduced or published in full. Reproduction or publication of extracts from the report requires the prior written approval of the KMO Lab.

1.2 Testing Laboratory

Test Firm Name:	Ke Mei Ou Lab Co., Ltd.
Test Firm Address:	2013-2016, 20th Floor, Business Center, Jiahui Xin Cheng, No 3027, Shen Nan Road, Fu Tian, Shen Zhen, Guang Dong, P. R. China
FCC Designation Number:	CN1532
Test Firm Registration Number:	344480
Internet:	www.kmolab.com
Email:	kmo@kmolab.com
ANSI-ASQ National Accreditation Board/ACLASS ISO/IEC 17025 Accredited Lab for telecommunication standards. The Registration Number is AT-1532. The testing quality system meets with ISO/IEC-17025 requirements, This approval results is accepted by MRA of ILAC.	

1.3 Details of Applicant

Name: YEALINK (XIAMEN) NETWORK TECHNOLOGY CO., LTD.
Address: 309, 3rd Floor, No.16, Yun Ding North Road, Huli District, Xiamen City, Fujian, China

1.4 Application Details

Date of Receipt of Application: May 6, 2019
Date of Receipt of Test Item: June 10, 2019
Date of Test : June 10~July 23, 2019

1.5 Details of Manufacturer

Name: Same as applicant
Address: Same as applicant

1.6 Test Item

EUT Feature	
EUT Description:	Bluetooth Wireless Microphone
Brand Name:	Yealink
Model Name:	CPW90-BT
EUT RF Technology:	<input checked="" type="checkbox"/> Bluetooth BT <input type="checkbox"/> Bluetooth v4.0 LE <input type="checkbox"/> Bluetooth v4.2 LE <input type="checkbox"/> Bluetooth v5.0 LE
HW Version:	CPW90-BTMV
SW Version:	1.0.0.4
EUT Stage:	<input checked="" type="checkbox"/> Identical Prototype <input type="checkbox"/> Production
Note: The above EUT's information was declared by manufacturer. Please refer to the specifications or user's manual for more detailed description.	

Additional Information

Standard Product Specification			
Tx/Rx Frequency Range	2402~2480 MHz		
Number of Channels	79		
Carrier Frequency of Each Channel	f=2402+k MHz (k=0,1,2...,78)		
Antenna Type / Gain	Internal PCB Antenna / gain 3 dBi		
Type of Modulation	Bluetooth BR 1Mbps: GFSK Bluetooth EDR 2Mbps: $\pi/4$ -DQPSK Bluetooth EDR 3Mbps: 8DPSK		
EUT Operational Condition	<input type="checkbox"/> AC <input checked="" type="checkbox"/> DC → <input checked="" type="checkbox"/> From Battery <input checked="" type="checkbox"/> External AC adapter <input type="checkbox"/> POE <input checked="" type="checkbox"/> Li-ion battery		
Specification of Accessory			
<input checked="" type="checkbox"/> AC/DC Adapter (US)	Brand Name	Yealink	Model Name YLPS050600UC1-US
	Power Rating	I/P: AC 100-240V~50/60Hz, 0.2A; O/P:DC 5V /0.6A	
<input checked="" type="checkbox"/> Li-ion Battery	Brand Name	Tianjin Lishen	Model Name APK463446LA
	Power Rating	3.7V/800mAh(2.96Wh)	

1.7 Applicable Standards

Applicable Standards
According to the specifications of the manufacturer, the EUT must comply with the requirements of the following standards: FCC Part 15 Subpart C 15.247 FCC KDB Publish No. 558074 D01 DTS Meas. Guidance v05r02 FCC KDB 414788 D01 Radiated Test Site v01r01 ANSI C63.10-2013
Note: 1) All test items were verified and recorded according to the standards and without any deviation during the test. 2) This EUT has also been tested and complied with the requirements of FCC 15 Part 15, Subpart B, recorded in a separate test report.

2. Technical Test

2.1 Summary of Test Results

The EUT has been tested according to the following specifications:

FCC Rules	Test Type	Limit	Result	Notes
15.247(a)(1)	Number of Hopping Channels	>15	PASS	Complies.
15.247(a)(1)	Hopping Channel Separation	≥ 2/3 of 20dB BW	PASS	Complies.
15.247(a)(1)	Dwell Time	≤ 0.4sec in 31.6sec period	PASS	Complies.
15.247(a)(1)	20dB Bandwidth	N/A	PASS	Complies.
15.247(b)(1)	Conducted Output Power	≤1 w for 1Mbps ≤125 mW for 2,3Mbps	PASS	Complies.
15.247(d)	Radiated Band Edges and Radiated Spurious Emission	FCC 15.209(a) & 15.247(d)	PASS	Complies
15.247(d)	Conducted Band Edges	≤ 20dBc	PASS	Complies
15.247(d)	Conducted Spurious Emission	≤ 20dBc	PASS	Complies
15.207	Conducted Emission	FCC15.207(a)	PASS	Complies
15.203 & 15.247(b)	Antenna Requirement	N/A	PASS	Complies
15.247(i) & 1.1307(b)(1) & 2.1091	Maximum Permissible Exposure (MPE)	< 1mW/cm ²	PASS	Complies

2.2 Antenna Requirement

A. Regulation

Per § 15.203, an intentional radiator shall be designed to ensure that no antenna other than that furnished by the responsible party shall be used with the device. The use of a permanently attached antenna or of an antenna that uses a unique coupling to the intentional radiator shall be considered sufficient to comply with the provisions of this section. The manufacturer may design the unit so that a broken antenna can be replaced by the user, but the use of a standard antenna jack or electrical connector is prohibited.

B. Result

The EUT has one internal PCB antenna, which was permanently attached and the gain is 3 dBi, Therefore the EUT complies with Section 15.203 of the FCC rules.

2.3 Measurement Uncertainty

Measurement	Frequency	Uncertainty
Conducted emissions	0.15MHz~30MHz	1.72
Radiated emissions	30MHz ~ 300MHz	3.88
Radiated emissions	300MHz ~1000MHz	3.86
Radiated emissions	>1000MHz	4.42
Bandwidth	-	5%
Peak Power	-	1.10
Peak Power Spectral Density	-	1.10
Band Edges Measurement	-	1.10

This uncertainty represents an expanded uncertainty expressed at approximately the 95% confidence level using a coverage factor of k=2.

3. EUT Modifications

No modification by test lab.

4. Conducted Power Line Test

4.1 Test Equipment

Please refer to Section 10 this report.

4.2 Test Procedure

Test Method	
<input checked="" type="checkbox"/>	<p>The EUT and simulators are connected to the main power through a line impedance stabilization network (L.I.S.N.). This provides a 50 ohm/50uH coupling impedance for the measuring equipment. The peripheral devices are also connected to the main power through a LISN that provides a 50ohm/50uH coupling impedance with 50ohm termination.</p> <p>Both sides of A.C. line are checked for maximum conducted interference. In order to find the maximum emission., the relative positions of equipment and all of the interface cables must be changed according to ANSI C63.10:2013 on conducted measurement. Conducted emissions were invested over the frequency range from 0.15MHz to 30MHz using a receiver bandwidth of 9kHz.</p>

4.3 Test Setup

Test Setup	
AC Line Conducted Emissions	
<p>This test is applicable for radio equipment and/or ancillary equipment for fixed use powered by the AC mains. This test shall be performed on a representative configuration of the radio equipment, the associated ancillary equipment, or a representative configuration of the combination of radio and ancillary equipment. This test assesses the level of internally generated electrical noise present on the AC power input/output ports.</p>	

4.4 Configuration of the EUT

Description of Bluetooth Test Mode

Channel	Frequency (MHz)	Bluetooth RF Output Power					
		Data Rate / Modulation					
		GFSK_DH5		$\pi/4$ -DQPSK_2DH5		8DPSK_3DH5	
		1Mbps		2Mbps		3Mbps	
CH00	2402	1.53	dBm	0.28	dBm	0.34	dBm
CH39	2441	0.59	dBm	-0.48	dBm	-0.36	dBm
CH78	2480	-1.09	dBm	-2.16	dBm	-2.04	dBm

Note:

- 1) All the test data for each data rate were verified, but only the worst case was reported.
- 2) The data rate was set in 1Mbps for all the test items due to the highest RF output power.

Bluetooth Test Mode

The following summary table is showing all test modes to demonstrate in compliance with the standard.

Summary Tables of Test Mode			
Test Item	Data Rate / Modulation		
	GFSK BT BR 1Mbps	$\pi/4$ -DQPSK BT EDR 2Mbps	8DPSK BT EDR 3Mbps
Conducted Cases	Mode 1: CH00_2402 MHz Mode 2: CH39_2441 MHz Mode 3: CH78_2480 MHz	Mode 4: CH00_2402 MHz Mode 5: CH39_2441 MHz Mode 6: CH78_2480 MHz	Mode 7: CH00_2402 MHz Mode 8: CH39_2441 MHz Mode 9: CH78_2480 MHz
Test Item	BT BR 1Mbps GFSK		
Radiated Cases	Mode 1: CH00_2402 MHz (Power by battery) Mode 2: CH39_2441 MHz (Power by battery) Mode 3: CH78_2480 MHz (Power by battery)		
AC Conducted Emission	Mode 1: Charging (Adapter mode)		

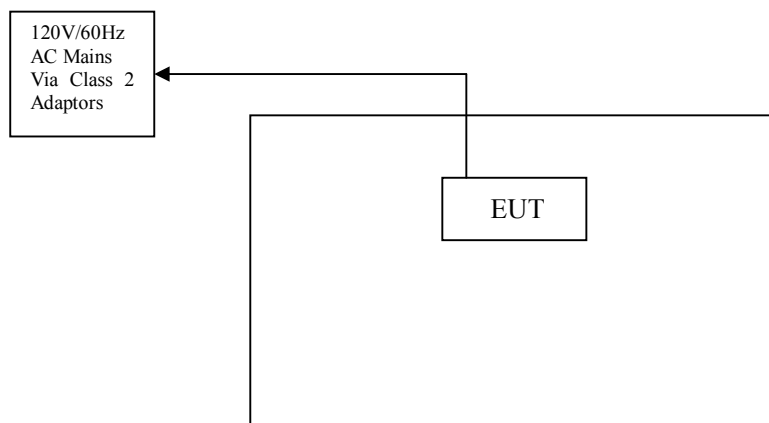
EUT Operation Test Setup	
Pre-Scan has been conducted to determine the worst-case mode from all possible combinations. Only the worst test mode data was reported.	
For Bluetooth function, the engineering test program was provided and enabled to make EUT connect with Bluetooth base station to continuous transmit/receive.	
Pre-Scan Mode	
Test Mode	Operating Description
1	EUT with GFSK
2	EUT with $\pi/4$ -DQPSK
3	EUT with 8DPSK
Conducted Emissions → Final	
Test Mode	Operating Description
1	EUT with GFSK
2	EUT with $\pi/4$ -DQPSK
3	EUT with 8DPSK
AC Conducted Emissions → Final	
1	EUT with Charger
Radiated Emissions → Final	
Test Mode	Operating Description
1	EUT with GFSK
2	EUT with $\pi/4$ -DQPSK
3	EUT with 8DPSK
Note: The test modes were carried out for all operation modes (include link and idle). The final test mode of the EUT was the worst test mode for Mode 1, and its test data was reported.	

Support Unit				
Device	Manufacturer	Model # Serial #	FCC ID/ DoC	Cable
Notebook	LENOVO	20195	DoC	1.5m unshielded power cord
-	-	-	-	-

4.5 EUT Operating Condition

Operating condition is according to ANSI C63.10:2013.

- a. Setup the EUT and simulators as shown on follow.
- b. Enable RF signal and confirm EUT active.
- c. Modulate output capacity of EUT up to specification.

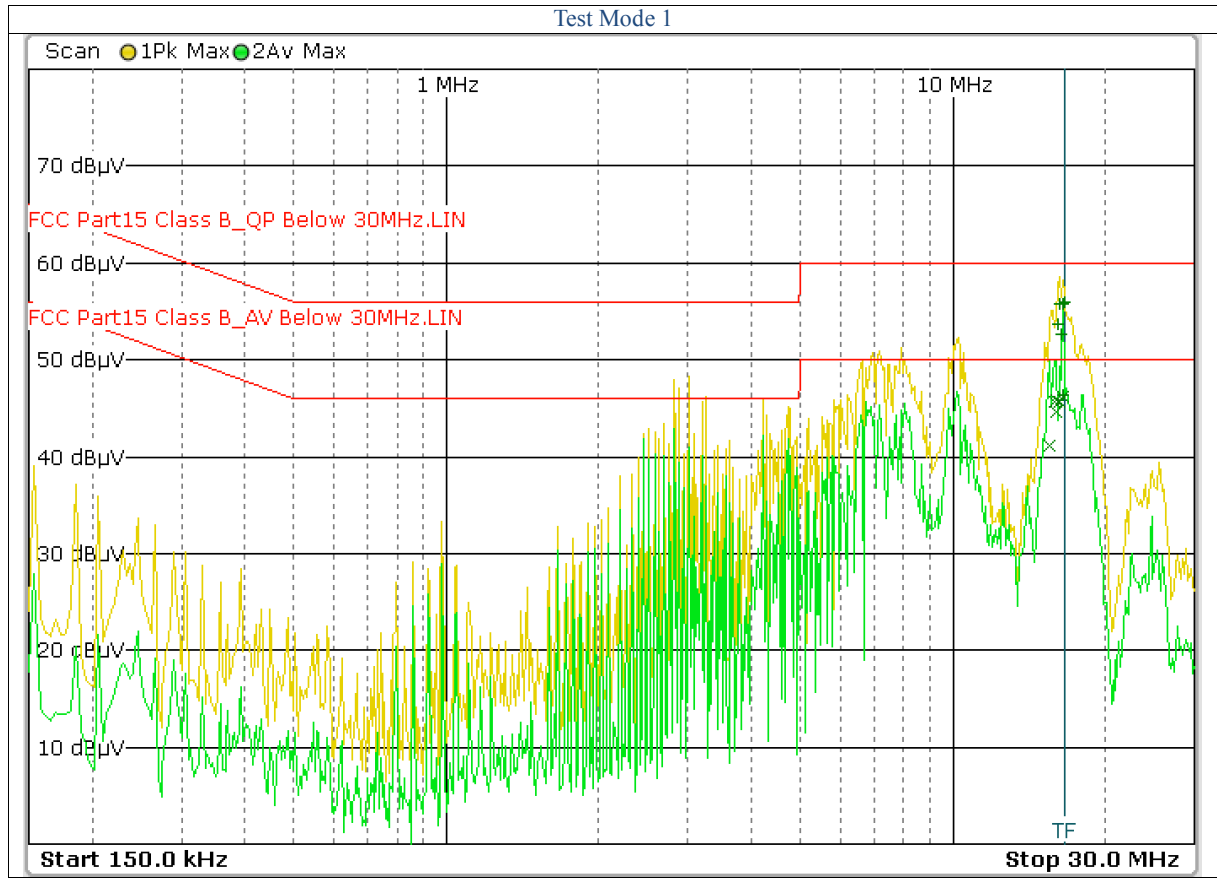


4.6 Conducted Power Line Emission Limits

FCC Part 15 Paragraph 15.207 (dBuV)	
Frequency Range (MHz)	QP/AV
0.15 – 0.5	66-56/56-46
0.5 – 5.0	56/46
5.0 - 30	60/50

Note: In the above table, the tighter limit applies at the band edges.

4.7 Conducted Power Line Test Result



FCC15										
Frequency (MHz)	Read Level (dBuV)		Factor (dB)	Emission (dBuV)		Line/Neutral	Limit (dBuV)		Margin(dBuV)	
	QP	AV		QP	AV		QP	AV	QP	AV
15.526	41.46	30.12	11.00	52.46	41.12	Line	60.00	50.00	-7.54	-8.88
15.958	43.27	33.73	10.90	54.17	44.63	Line	60.00	50.00	-5.83	-5.37
16.022	42.62	34.76	11.00	53.62	45.76	Line	60.00	50.00	-6.38	-4.24
16.206	44.94	34.80	10.90	55.84	45.70	Line	60.00	50.00	-4.16	-4.30
16.450	44.72	35.60	11.00	55.72	46.60	Line	60.00	50.00	-4.28	-3.40
16.578	44.98	35.34	10.90	55.88	46.24	Line	60.00	50.00	-4.12	-3.76

Note:

- 1.Uncertainty in conducted emission measured is <+/- 2dB.
- 2.The emission levels of other frequencies were very low against the limit.
- 3.All Reading Levels are Quasi-Peak and Average value.
- 4.Emission = Meter Reading + Factor; Factor = Insertion Loss + Cable Loss.
- 5.Margin Value= Emission Level - Limit Value.



FCC15										
Frequency (MHz)	Read Level (dBUV)		Factor (dB)	Emission (dBUV)		Line/Neutral	Limit (dBUV)		Margin(dBUV)	
	QP	AV		QP	AV		QP	AV	QP	AV
2.886	34.87	20.11	11.00	45.87	31.11	Neutral	56.00	46.00	-10.13	-14.89
2.950	36.50	22.65	10.90	47.40	33.55	Neutral	56.00	46.00	-8.60	-12.45
3.010	36.94	22.40	11.00	47.94	33.40	Neutral	56.00	46.00	-8.06	-12.60
8.046	35.25	20.66	10.90	46.15	31.56	Neutral	60.00	50.00	-13.85	-18.44
15.286	37.64	27.18	11.00	48.64	38.18	Neutral	60.00	50.00	-11.36	-11.82
16.462	36.69	24.38	10.90	47.59	35.28	Neutral	60.00	50.00	-12.41	-14.72

Note:

1. Uncertainty in conducted emission measured is ± 2 dB.
2. The emission levels of other frequencies were very low against the limit.
3. All Reading Levels are Quasi-Peak and Average value.
4. Emission = Meter Reading + Factor; Factor = Insertion Loss + Cable Loss.
5. Margin Value= Emission Level - Limit Value.

5. FCC Part 15.247 Requirements for FHSS Systems

5.1 Test Equipment

Please refer to Section 10 this report.

5.2 Test Procedure

Refer to FCC 15.247(a)(2), ANSI C63.10:2013; FCC KDB Publication No.558074 D01 DTS Meas Guidance v05r02

20 dB Bandwidth:

- Place the EUT on the table and set it in the transmitting mode.
- Remove the antenna from the EUT and then connect a low loss RF cable from the antenna port to the spectrum analyzer.
- Set the spectrum analyzer as RBW = 30 kHz, VBW = 100 kHz, Span = 2 MHz, Sweep = 100ms.
- Mark the peak frequency and -20dB (upper and lower) frequency.
- Repeat until all the rest channels are investigated.

Peak Power:

Use the following spectrum analyzer settings:

Span = approximately 5 times the 20 dB bandwidth, centered on a hopping channel

RBW > the 20 dB bandwidth of the emission being measured; VBW ≥ RBW; Sweep = auto

Detector function = peak; Trace = max hold

100kHz Bandwidth of Band Edges Measurement:

- The transmitter output was connected to the spectrum analyzer via a low lose cable.
- Set both RBW and VBW of spectrum analyzer to 100kHz with suitable frequency span including 100kHz bandwidth from band edge.
- The band edges was measured and recorded.

Frequency Separation:

- Place the EUT on the table and set it in the transmitting mode.
- Remove the antenna from the EUT and then connect a low loss RF cable from the antenna port to the spectrum analyzer.
- Set the spectrum analyzer as RBW = 100 kHz, VBW = 100 kHz, Span = 2 MHz, Sweep = 100ms.
- Set center frequency spectrum analyzer = middle of hopping channel.

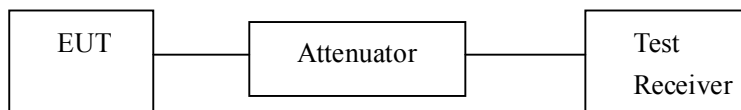
Number of Hopping Frequency:

- Place the EUT on the table and set it in the transmitting mode.
- Remove the antenna from the EUT and then connect a low loss RF cable from the antenna port to the spectrum analyzer.
- Set spectrum analyzer Start=2400MHz, Stop=2483.5MHz, RBW = 100 kHz, VBW = 300 kHz, Sweep=100ms
- Max hold, view and count how many channel in the band.

Time of Occupancy (Dwell Time):

- Place the EUT on the table and set it in the transmitting mode.
- Remove the antenna from the EUT and then connect a low loss RF cable from the antenna port to the spectrum analyzer.
- Set center frequency of spectrum analyzer = operating frequency, RBW = 100 kHz, VBW = 300 kHz, Sweep=2ms
- Repeat above procedures until all frequency measured were complete.

5.3 Test Setup



5.4 Configuration of the EUT

Same as section 4.4 of this report

5.5 EUT Operating Condition

Same as section 4.5 of this report

5.6 Limit

20 dB Bandwidth: For frequency hopping systems operating in the 2400MHz~2483.5MHz no limit for 20dB bandwidth

Peak Power: For frequency hopping systems operating in the 2400~2483.5MHz band employing at least 75 hopping channels, and all frequency hopping systems in the 5725~5850MHz band: 1Watt. For all other frequency hopping systems in the 2400~2483.5MHz band: 0.125Watts.

100kHz Bandwidth of Band Edges Measurement: According to §15.247(c), in any 100kHz bandwidth outside the frequency bands in which the spread spectrum intentional radiator is operating, the radio frequency power that is produced by the intentional radiator shall be at least 20dB below that in the 100kHz bandwidth within the band that contains the highest level of the desired power. In addition, radiated emissions which fall in the restricted bands, as defined in §15.205(a), must also comply with the radiated emission limits specified in 15.209(a).

Peak Power Spectral Density: According to §15.247(d), for direct sequence systems, the peak power spectral density conducted from the intentional radiator to the antenna shall not be greater than 8dBm in any 3kHz band during any time interval of continuous transmission

Frequency Separation: According to §15.247(a)(1), Frequency hopping systems shall have hopping channel carrier frequencies separated by minimum of 25kHz or the 20dB bandwidth of the hopping channel, whichever is greater.

Number of Hopping Frequency: According to §15.247(a)(1)(iii), Frequency hopping systems operating in the 2400~2483.5MHz bands shall use at least 15 hopping frequencies.

Time of Occupancy (Dwell Time): According to §15.247(a)(1)(iii), Frequency hopping systems operating in the 2400~2483.5MHz. The average time of occupancy on any frequency shall not be greater than 0.4 s within period of 0.4 seconds multiplied by the number of hopping channel employed.

5. 7 Test Result

A. 20 dB Bandwidth

Refer to Appendix_DSS_BT.

B. Peak Power

Refer to Appendix_DSS_BT.

C. 100kHz Band Edges Measurement

Refer to Appendix_DSS_BT.

D. Frequency Separation

Refer to Appendix_DSS_BT.

E. Number of Hopping Frequency

Refer to Appendix_DSS_BT.

F. Time of Occupancy (Dwell Time)

Refer to Appendix_DSS_BT.

6. Transmitter Spurious Radiated Emission at 3 Meters

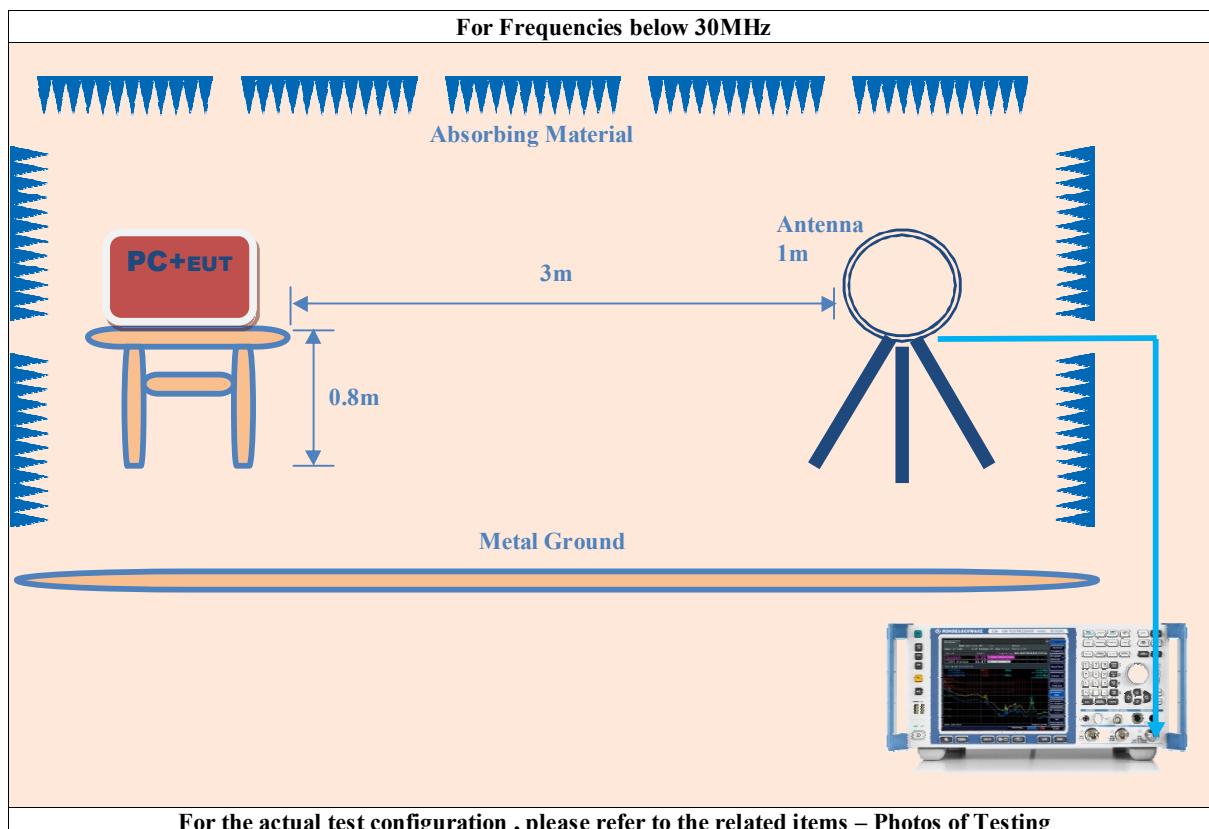
6.1 Test Equipment

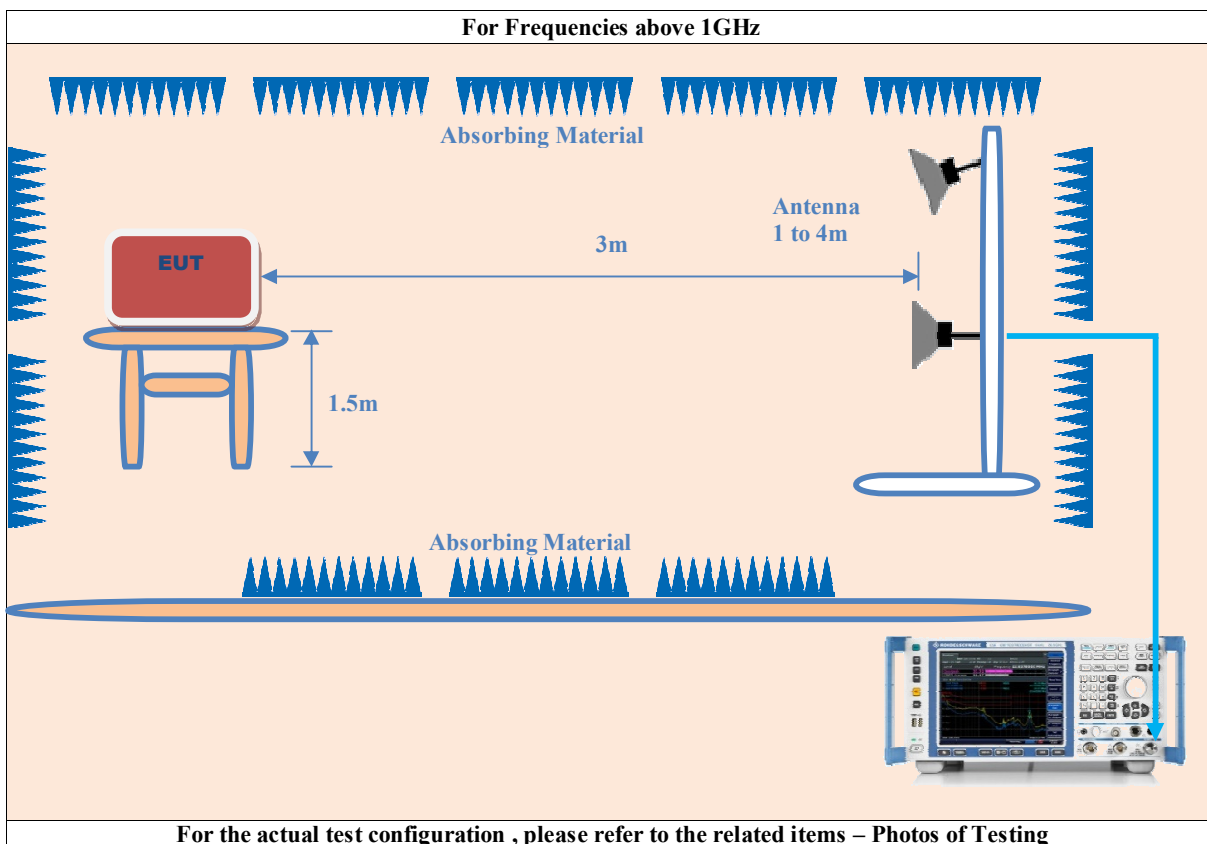
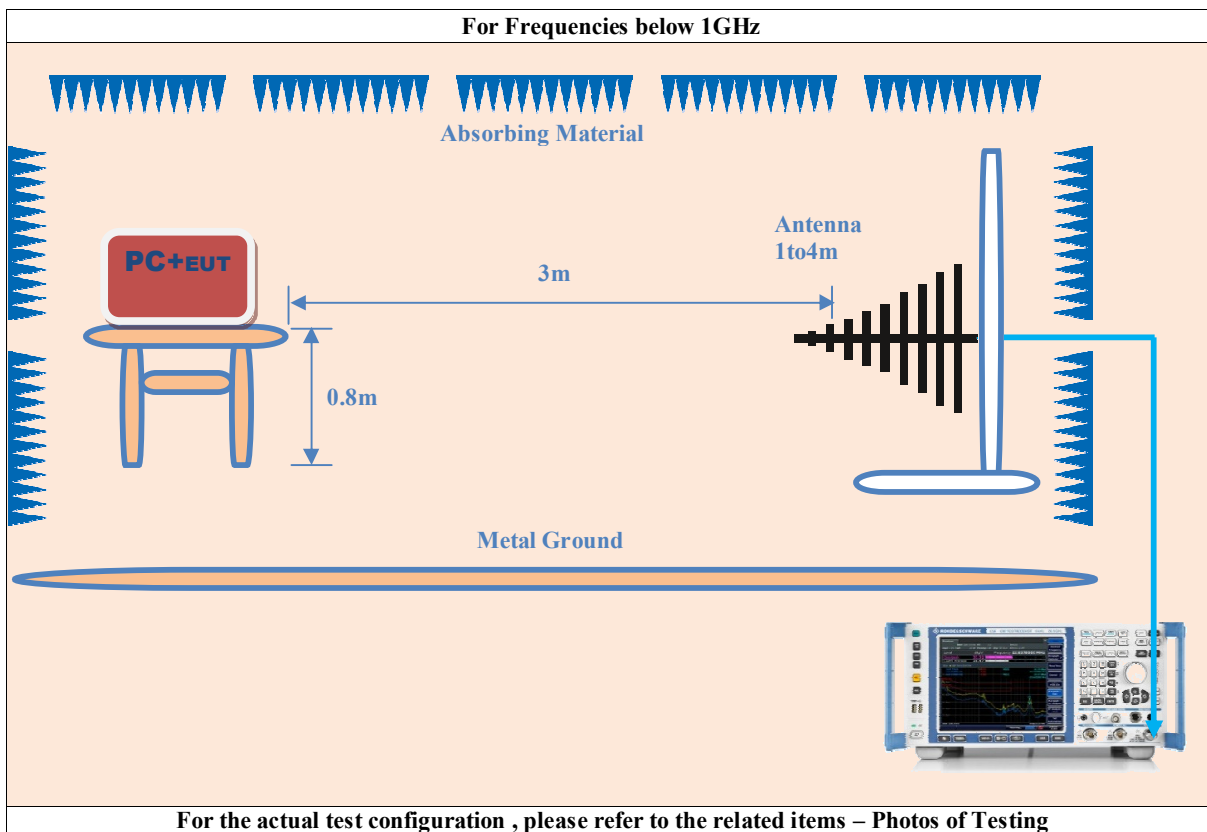
Please refer to Section 10 this report.

6.2 Test Procedure

1. The EUT was tested according to ANSI C63.10:2013.
2. The EUT, peripherals were put on the turntable which table size is 1m x 1.5 m, table high 0.8m. All set up is according to ANSI C63.10:2013.
3. The frequency spectrum from 9kHz to 25 GHz was investigated. All readings from 9kHz to 150kHz are quasi-peak values with a resolution bandwidth of 200 Hz. All readings from 150kHz to 30MHz are quasi-peak values with a resolution bandwidth of 9 KHz. All readings from 30 MHz to 1 GHz are quasi-peak values with a resolution bandwidth of 120 KHz. Measurements were made at 3 meters. All readings are above 1 GHz , peak values with a resolution bandwidth of 1 MHz . Measurements were made at 3 meters.
4. The emissions from the EUT were measured continuously at every azimuth by rotating the turntable. The Receiving antenna high is varied from 1 m to 4 m high to find the maximum emission for each frequency. Emissions below 30MHz were measured with a loop antenna while emission above 30MHz were measured using a broadband E-field antenna.
5. Maximizing procedure was performed on the six (6) highest emissions to ensure EUT compliance is with all installation combinations. All data was recorded in the peak detection mode. Quasi-peak readings was performed only when an emission was found to be marginal (within -4 dB of specification limit), and are distinguished with a "QP" in the data table.
6. Each emission was to be maximized by changing the polarization of receiving antenna both horizontal and vertical. In order to find out the max. emission, the relative positions of this transmitter(EUT) was rotated through three orthogonal axes according to the requirements in Section 8 and 13 of ANSI C63.10:2013.

6.3 Test Setup





6.4 Configuration of the EUT

Same as section 4.4 of this report

6.5 EUT Operating Condition

Same as section 4.5 of this report.

6.6 Limit

In any 100 KHz bandwidth outside the operating frequency band, the radio frequency power that is produced by modulation products of the spreading sequence, the information sequence and the carrier frequency shall be either at least 20 dB below that in any 100 KHz bandwidth within the band that contains the highest level of the desired power or shall not exceed the general levels specified in section 15.209(a), which lesser attenuation.

All other emissions inside restricted bands specified in section 15.205(a) shall not exceed the general radiated emission limits specified in section 15.209(a)

Note:

Applies to harmonics/spurious emissions that fall in the restricted bands listed in section 15.205. The maximum permitted average field strength is listed in section 15.209.

47 CFR §15.237(c): The emission limits as specified above are based on measurement instrument employing an average detector. The provisions in section 15.35 for limiting peak emissions apply.

FCC CFR 47, Part 15, Subpart C, Para, 15.205(a) – Restricted Frequency Bands

MHz	MHz	MHz	GHz
0.090–0.110.....	16.42–16.423	399.9–410	4.5–5.15
0.495–0.505	16.69475–16.69525	608–614	5.35–5.46
2.1735–2.1905.....	16.80425–16.80475	960–1240	7.25–7.75
4.125–4.128.....	25.5–25.67	1300–1427	8.025–8.5
4.17725–4.17775.....	37.5–38.25	1435–1626.5	9.0–9.2
4.20725–4.20775.....	73–74.6	1645.5–1646.5	9.3–9.5
6.215–6.218.....	74.8–75.2	1660–1710	10.6–12.7
6.26775–6.26825.....	108–121.94	1718.8–1722.2	13.25–13.4
6.31175–6.31225.....	123–138	2200–2300	14.47–14.5
8.291–8.294.....	149.9–150.05	2310–2390	15.35–16.2
8.362–8.366.....	156.52475–156.52525	2483.5–2500	17.7–21.4
8.37625–8.38675.....	156.7–156.9	2690–2900	22.01–23.12
8.41425–8.41475.....	162.0125–167.17	3260–3267	23.6–24.0
12.29–12.293.....	167.72–173.2	3332–3339	31.2–31.8
12.51975–12.52025.....	240–285	3345.8–3358	36.43–36.5
12.57675–12.57725.....	322–335.4	3600–4400	(²)
13.36–13.41.....			

¹Until February 1, 1999, this restricted band shall be 0.490–0.510 MHz.
²Above 38.6

FCC 47 CFR, Part 15.209(a) – Field Strength Limits within Restricted Frequency Bands

Frequency (MHz)	Field strength (microvolts/meter)	Measurement distance (meters)
0.009–0.490.....	2400/F (kHz)	300
0.490–1.705.....	24000/F (kHz)	30
1.705–30.0.....	30	30
30–88.....	100**	3
88–216.....	150**	3
216–960.....	200**	3
Above 960.....	500	3

6.7 Test Result

Test Mode 1										
Restricted Frequency Bands Data_GFSK CH Low										
Frequency (MHz)	Read Level (dBuV)		Factor (dB)	Emission (dBuV/m)		Horiz./Vert.	Limit (dBuV/m)		Margin(dB)	
	PK	AV		PK	AV		PK	AV	PK	AV
2390.000	51.06	38.72	0.90	51.96	39.62	Horiz./	74.0	54.0	-22.04	-14.38
2390.000	51.41	39.75	0.90	52.31	40.65	Vert.	74.0	54.0	-21.69	-13.35
Restricted Frequency Bands Data_GFSK CH High										
Frequency (MHz)	Read Level (dBuV)		Factor (dB)	Emission (dBuV/m)		Horiz./Vert.	Limit (dBuV/m)		Margin(dB)	
	PK	AV		PK	AV		PK	AV	PK	AV
2483.500	53.42	47.92	0.90	54.32	48.82	Horiz./	74.0	54.0	-19.68	-5.18
2483.500	54.31	48.03	0.90	55.21	48.93	Vert.	74.0	54.0	-18.79	-5.07

Test Mode 2										
Restricted Frequency Bands Data_π/4-DQPSK CH Low										
Frequency (MHz)	Read Level (dBuV)		Factor (dB)	Emission (dBuV/m)		Horiz./Vert.	Limit (dBuV/m)		Margin(dB)	
	PK	AV		PK	AV		PK	AV	PK	AV
2390.000	48.75	37.78	0.90	49.65	38.68	Horiz./	74.0	54.0	-24.35	-15.32
2390.000	49.44	38.46	0.90	50.34	39.36	Horiz./	74.0	54.0	-23.66	-14.64
Restricted Frequency Bands Data_π/4-DQPSK CH High										
Frequency (MHz)	Read Level (dBuV)		Factor (dB)	Emission (dBuV/m)		Horiz./Vert.	Limit (dBuV/m)		Margin(dB)	
	PK	AV		PK	AV		PK	AV	PK	AV
2483.500	53.91	47.96	0.90	54.81	48.86	Horiz./	74.0	54.0	-19.19	-5.14
2483.500	54.02	48.24	0.90	54.92	49.14	Vert.	74.0	54.0	-19.08	-4.86

Test Mode 3										
Restricted Frequency Bands Data_8DPSK CH Low										
Frequency (MHz)	Read Level (dBuV)		Factor (dB)	Emission (dBuV/m)		Horiz./Vert.	Limit (dBuV/m)		Margin(dB)	
	PK	AV		PK	AV		PK	AV	PK	AV
2390.000	50.39	38.83	0.90	51.29	39.73	Horiz./	74.0	54.0	-22.71	-14.27
2390.000	50.97	39.08	0.90	51.87	39.98	Horiz./	74.0	54.0	-22.13	-14.02
Restricted Frequency Bands Data_8DPSK CH High										
Frequency (MHz)	Read Level (dBuV)		Factor (dB)	Emission (dBuV/m)		Horiz./Vert.	Limit (dBuV/m)		Margin(dB)	
	PK	AV		PK	AV		PK	AV	PK	AV
2483.500	53.46	48.04	0.90	54.36	48.94	Horiz./	74.0	54.0	-19.64	-5.06
2483.500	54.37	48.43	0.90	55.27	49.33	Vert.	74.0	54.0	-18.73	-4.67

Test Mode 1										
Harmonics Radiated Emission Data_CH Low										
Frequency (MHz)	Read Level (dBuV)		Factor (dB)	Emission (dBuV/m)		Horiz./Vert.	Limit (dBuV/m)		Margin(dB)	
	PK	AV		PK	AV		PK	AV	PK	AV
4804.000	35.86	27.55	13.10	48.96	40.65	Horiz./	74.0	54.0	-25.04	-13.35
4804.000	36.55	28.28	13.10	49.65	41.38	Vert.	74.0	54.0	-24.35	-12.62
7206.000	37.02	27.16	13.10	50.12	40.26	Horiz./	74.0	54.0	-23.88	-13.74
7206.000	37.44	28.05	13.10	50.54	41.15	Vert.	74.0	54.0	-23.46	-12.85
24020.00	-	-	-	-	-	-	-	-	-	-
24020.00	-	-	-	-	-	-	-	-	-	-
Harmonics Radiated Emission Data_CH Mid										
Frequency (MHz)	Read Level (dBuV)		Factor (dB)	Emission (dBuV/m)		Horiz./Vert.	Limit (dBuV/m)		Margin(dB)	
	PK	AV		PK	AV		PK	AV	PK	AV
4882.000	38.59	30.15	10.10	48.69	40.25	Horiz./	74.0	54.0	-25.31	-13.75
4882.000	39.18	30.29	10.10	49.28	40.39	Vert.	74.0	54.0	-24.72	-13.61
7323.000	36.92	27.54	13.10	50.02	40.64	Horiz./	74.0	54.0	-23.98	-13.36
7323.000	37.03	27.76	13.10	50.13	40.86	Vert.	74.0	54.0	-23.87	-13.14
24410.00	-	-	-	-	-	-	-	-	-	-
24410.00	-	-	-	-	-	-	-	-	-	-
Harmonics Radiated Emission Data_CH High										
Frequency (MHz)	Read Level (dBuV)		Factor (dB)	Emission (dBuV/m)		Horiz./Vert.	Limit (dBuV/m)		Margin(dB)	
	PK	AV		PK	AV		PK	AV	PK	AV
4960.000	37.72	29.53	10.10	47.82	39.63	Vert.	74.0	54.0	-26.18	-14.37
4960.000	38.55	30.17	10.10	48.65	40.27	Vert.	74.0	54.0	-25.35	-13.73
7440.000	34.93	26.86	13.10	48.03	39.96	Vert.	74.0	54.0	-25.97	-14.04
7440.000	35.69	27.06	13.10	48.79	40.16	Vert.	74.0	54.0	-25.21	-13.84
24800.00	-	-	-	-	-	-	-	-	-	-
24800.00	-	-	-	-	-	-	-	-	-	-

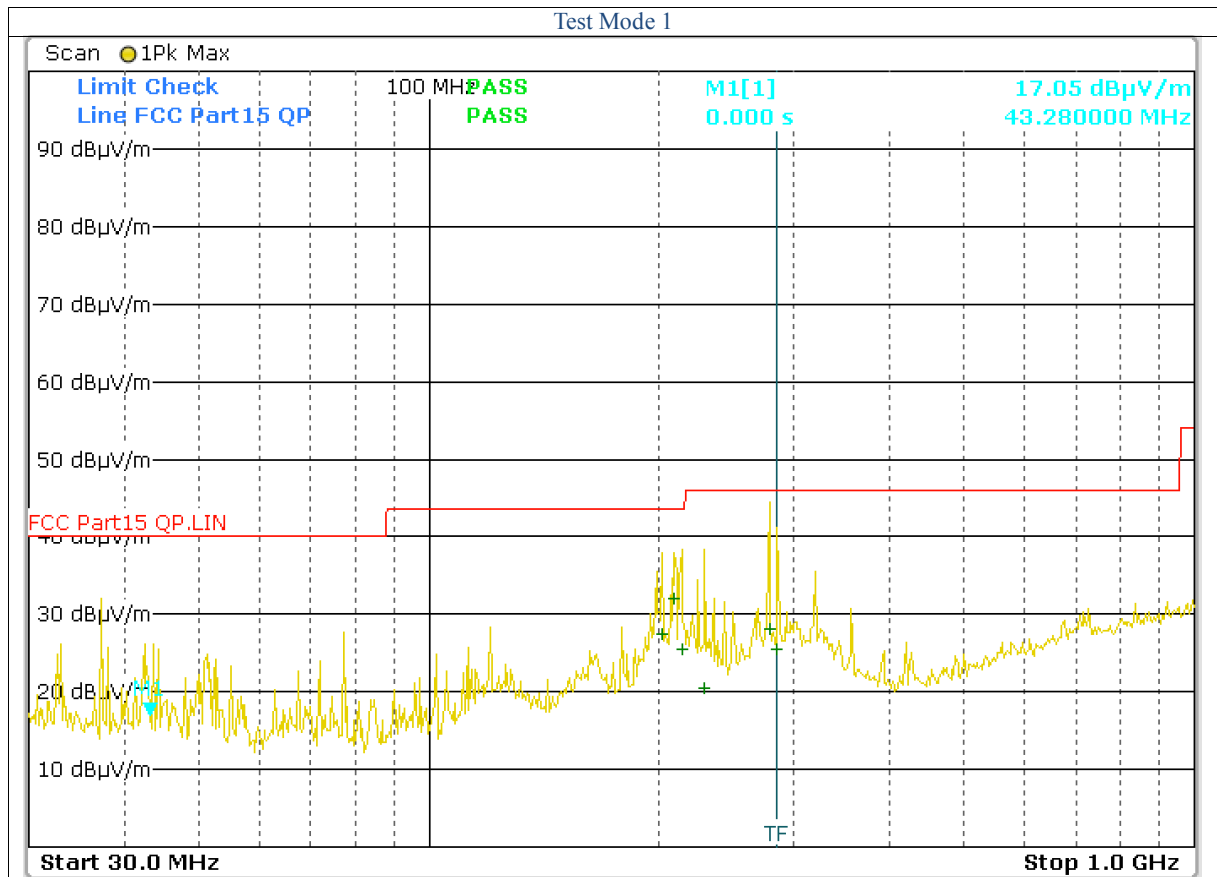
- Note:**
- (1) All Reading Levels below 1GHz are Quasi-Peak, above are peak and average value.
 - (2) Emission Level = Reading Level + Probe Factor + Cable Loss.
 - (3) Span shall wide enough to fully capture the emission being measured;
Set RBW = 1 MHz, VBW= 3MHz for f > 1 GHz for peak measurement.
For average measurement: VBW = 10 Hz, when duty cycle is no less than 98 percent. VBW ≥ 1/T, when duty cycle is less than 98 percent where T is the minimum transmission duration over which the transmitter is on and is transmitting at its maximum power control level for the tested mode of operation.
 - (4) The average measurement was not performed when the peak measured data under the limit of average detection. If the readings given are average, peak measurement should also be supplied.
 - (5) Where an emission level is indicated by a -, levels had a margin greater than 20 dB when compared to the limit.

For Frequency below 30MHz

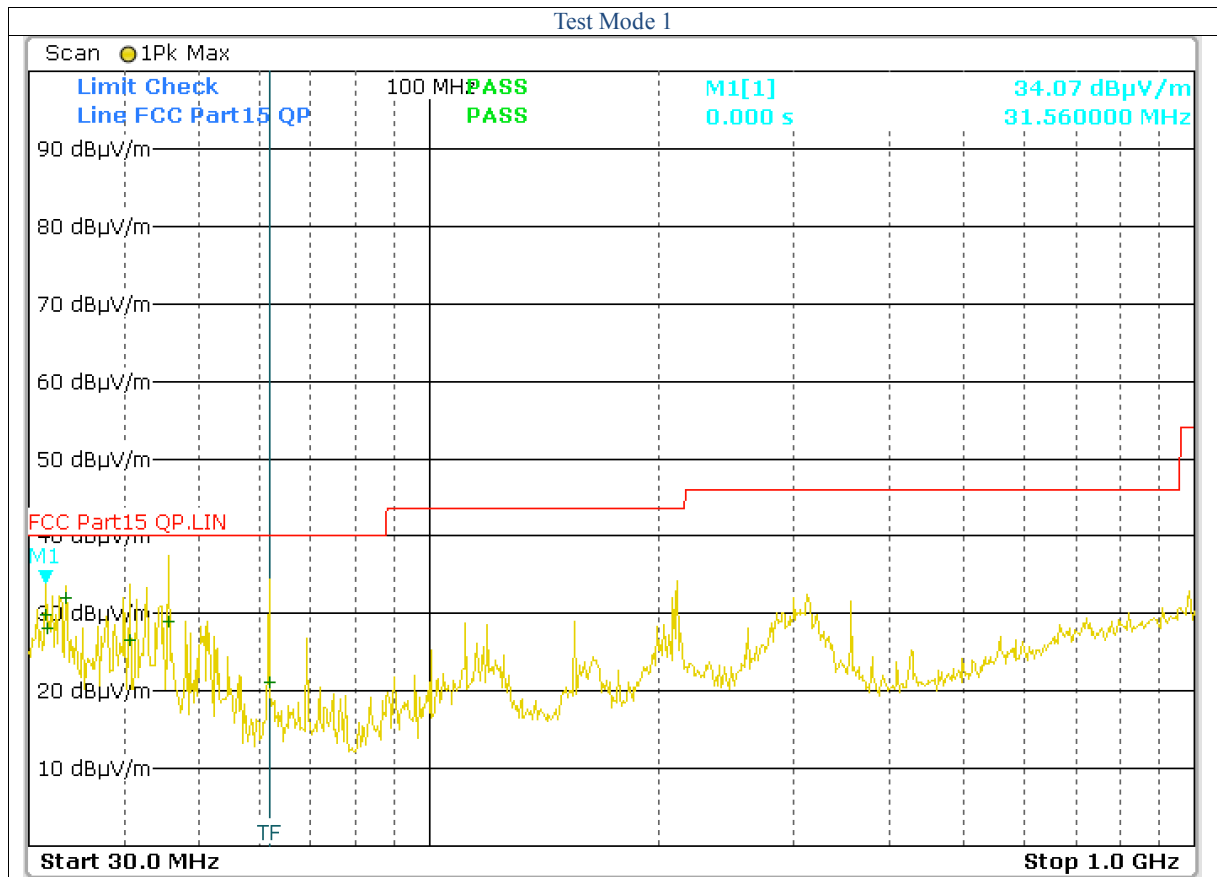
Frequency (MHz)	Read Level (dBuV)	Factor (dB)	Emission (dBuV/m)	Horiz./Vert.	Limit (dBuV/m)	Margin (dB)
N/A						
N/A						
N/A						
N/A						
N/A						
N/A						

- Note:**
- (1) All Readings below 1GHz are Quasi-Peak, above are performed with peak and/or average measurements as necessary.
 - (2) "N/A" remark, if no specific emissions from the EUT are recorded (ie: margin>20dB from the applicable limit) and considered that's already beyond the background noise floor.
 - (3) Emission Level = Reading Level + Probe Factor + Cable Loss.

For Frequency from 30MHz to 1GHz



Frequency (MHz)	Read Level (dBuV)	Factor (dB)	Emission (dBuV/m)	Horiz./Vert.	Limit (dBuV/m)	Margin (dB)
201.360	9.25	18.19	27.44	Horiz./	43.5	-16.06
209.240	13.80	18.19	31.99	Horiz./	43.5	-11.51
213.840	7.33	18.19	25.52	Horiz./	43.5	-17.98
228.480	2.24	18.19	20.43	Horiz./	46.0	-25.57
278.400	13.27	14.94	28.21	Horiz./	46.0	-17.79
284.760	10.60	14.94	25.54	Horiz./	46.0	-20.46



Frequency (MHz)	Read Level (dBuV)	Factor (dB)	Emission (dBuV/m)	Horiz./Vert.	Limit (dBuV/m)	Margin (dB)
31.560	11.76	18.19	29.95	Vert.	40.0	-10.05
31.640	9.88	18.19	28.07	Vert.	40.0	-11.93
33.480	13.90	18.19	32.09	Vert.	40.0	-7.91
40.720	8.34	18.19	26.53	Vert.	40.0	-13.47
45.640	13.94	14.94	28.88	Vert.	40.0	-11.12
61.880	6.15	14.94	21.09	Vert.	40.0	-18.91

- Note:**
- (1) All Readings below 1GHz are Quasi-Peak, above are performed with peak and/or average measurements as necessary.
 - (2) "N/A" remark, if no specific emissions from the EUT are recorded (ie: margin>20dB from the applicable limit) and considered that's already beyond the background noise floor.
 - (3) Emission Level = Reading Level + Probe Factor + Cable Loss.

7. Photos of Testing

Conducted Emission test view_AC



Radiated Emission test view (Frequency from 30MHz to 1GHz)



Radiated Emission test view (Frequency above 1GHz)

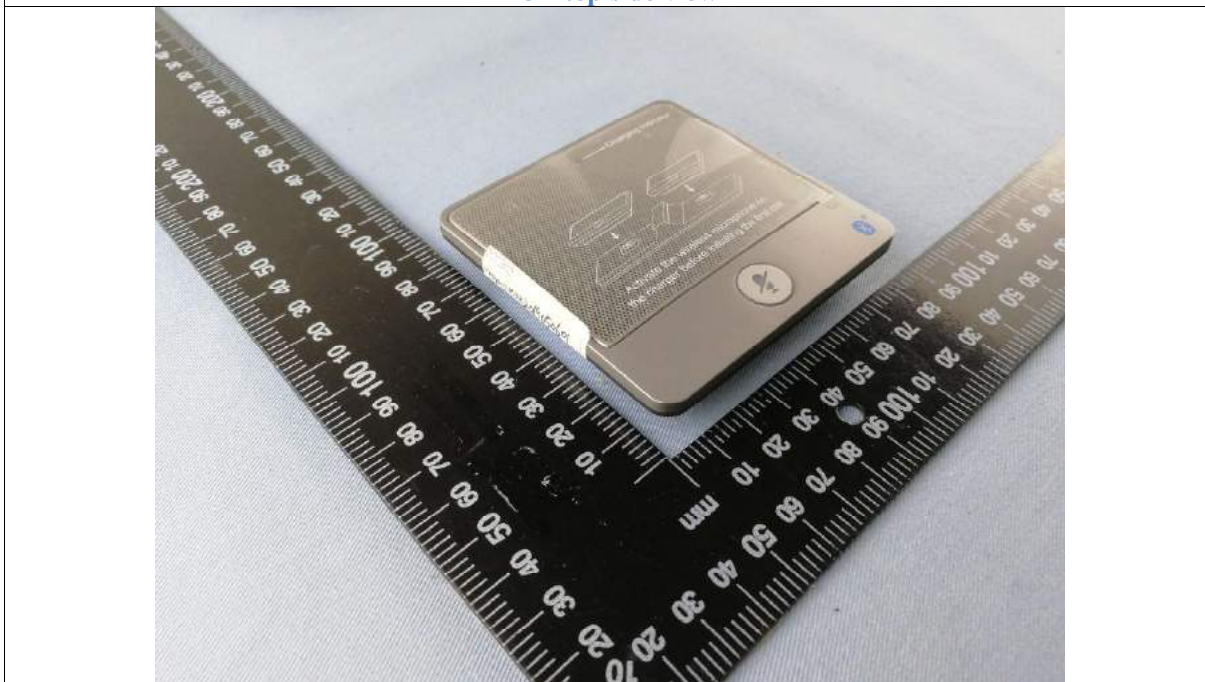


8. Photographs – EUT

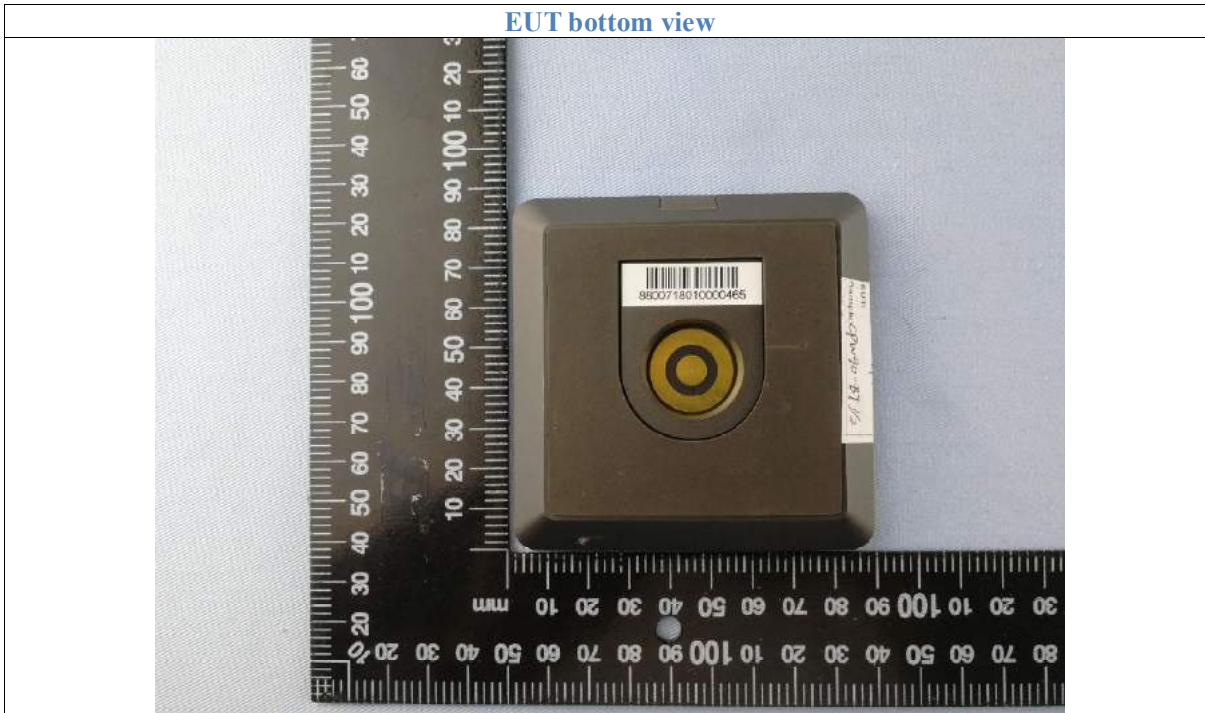
EUT top view



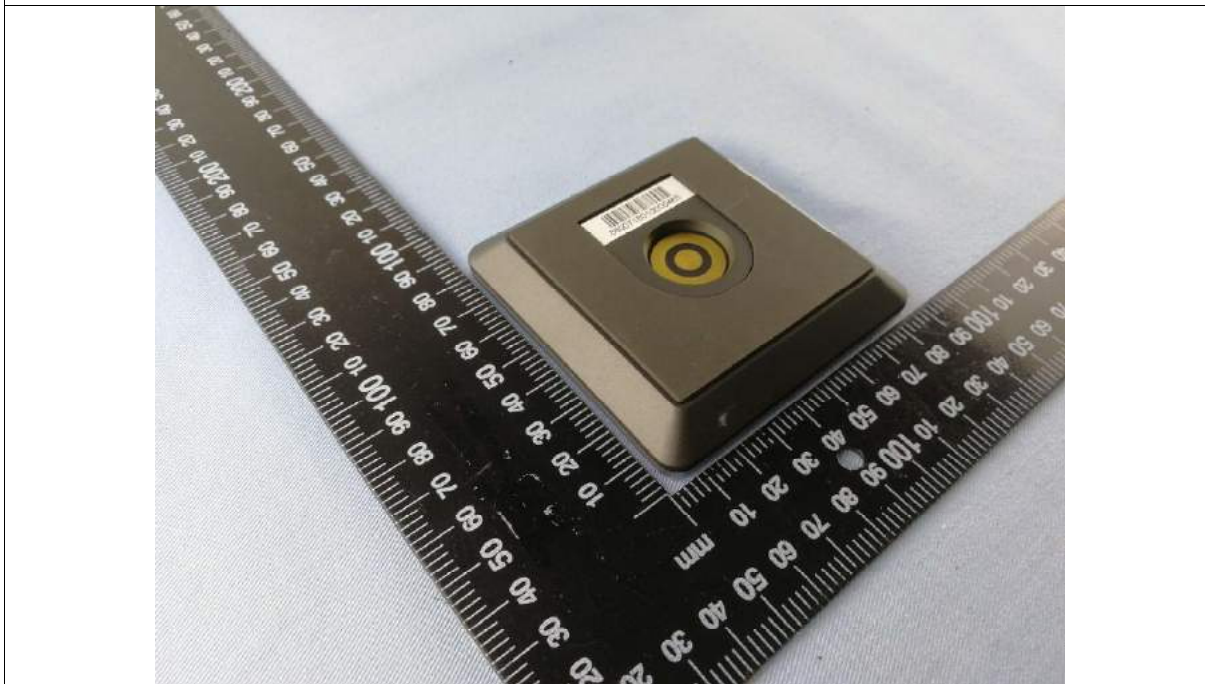
EUT top side view



EUT bottom view



EUT bottom side view



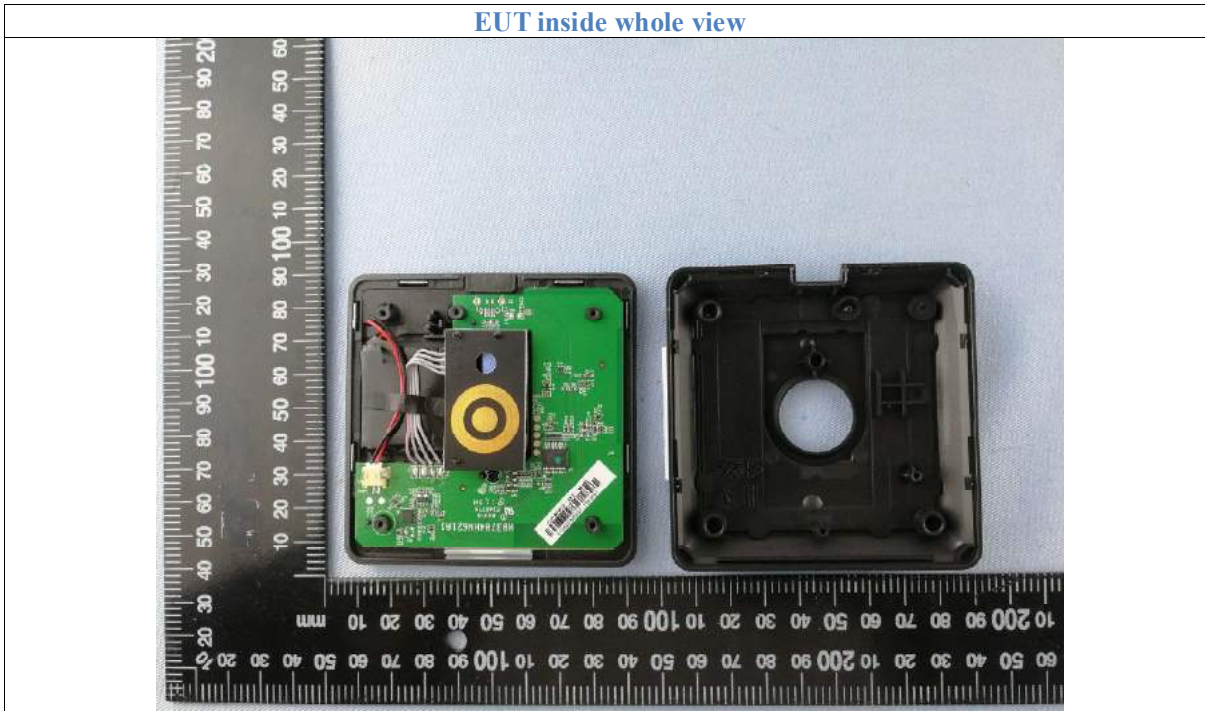
EUT interface view



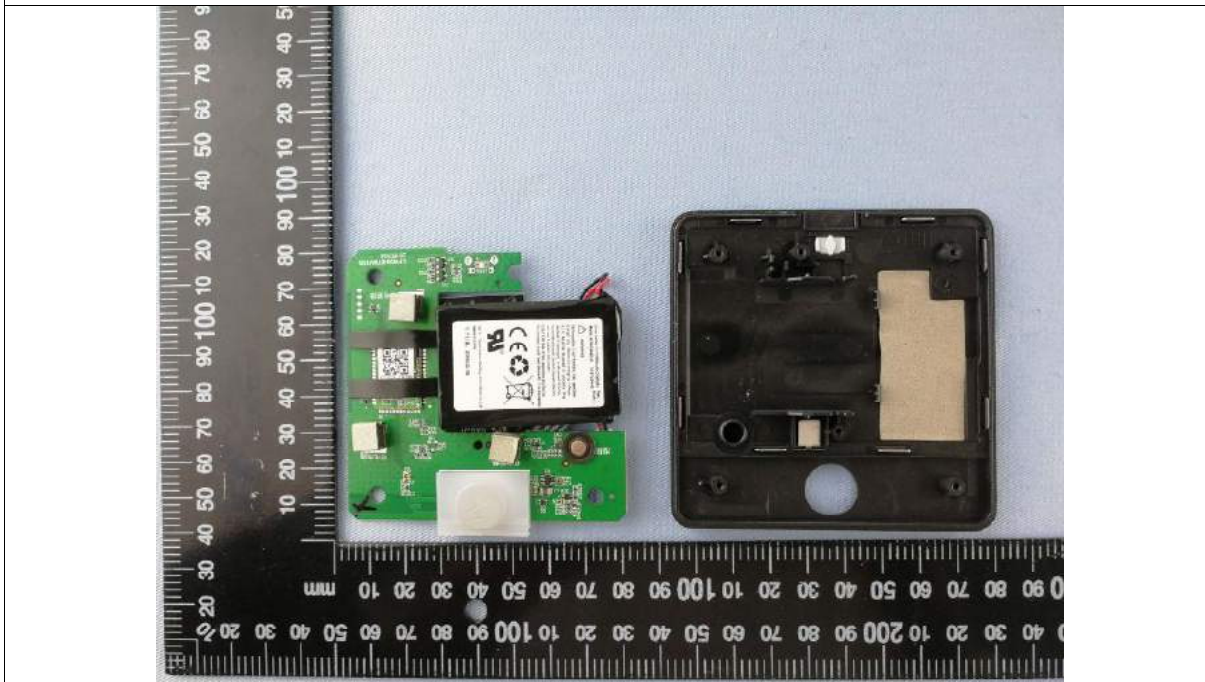
EUT interface view



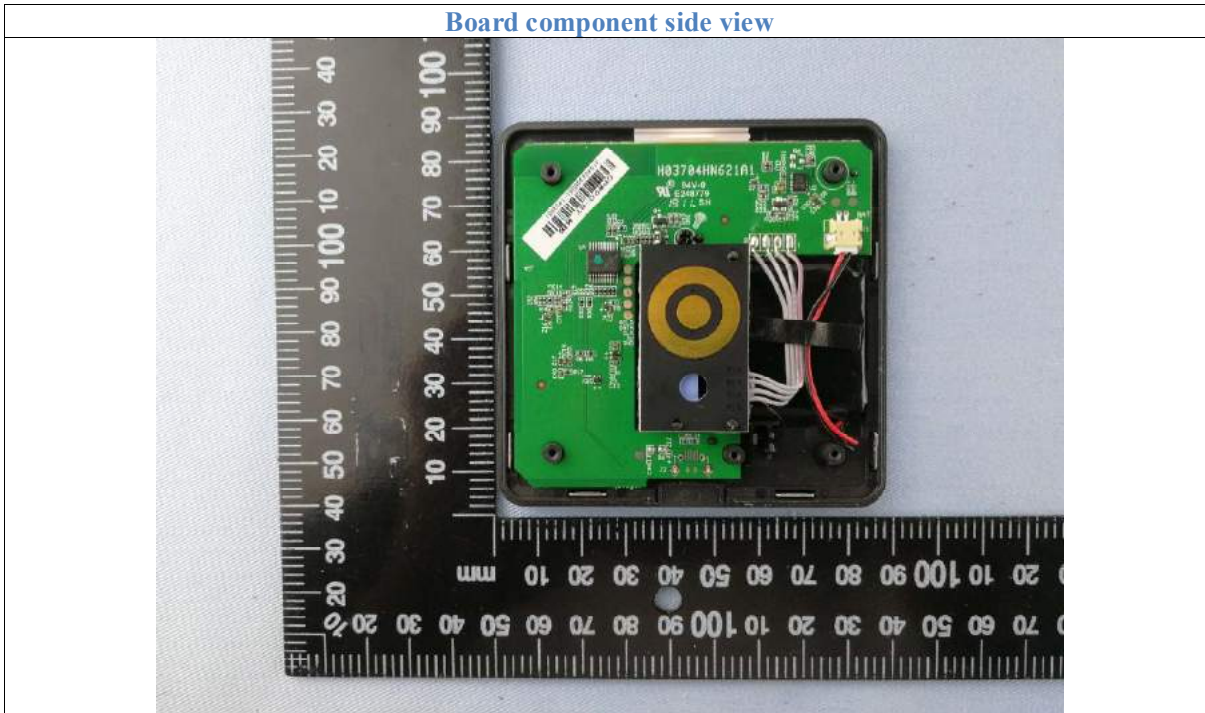
EUT inside whole view



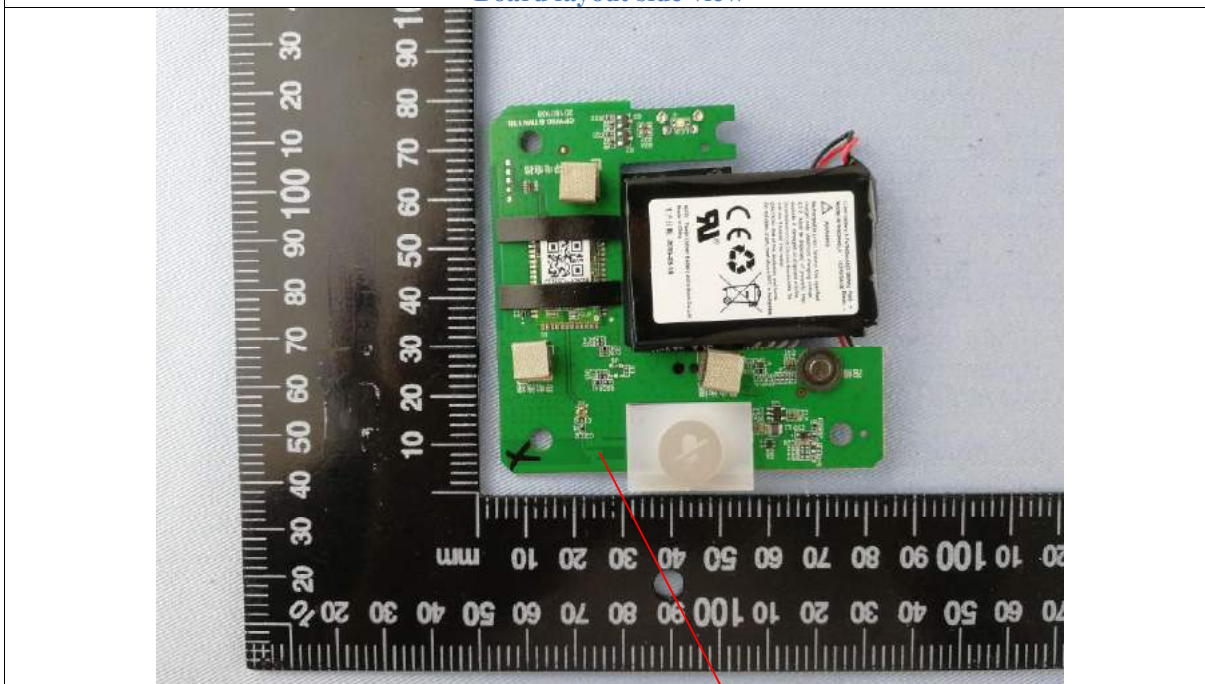
EUT inside whole view



Board component side view



Board layout side view

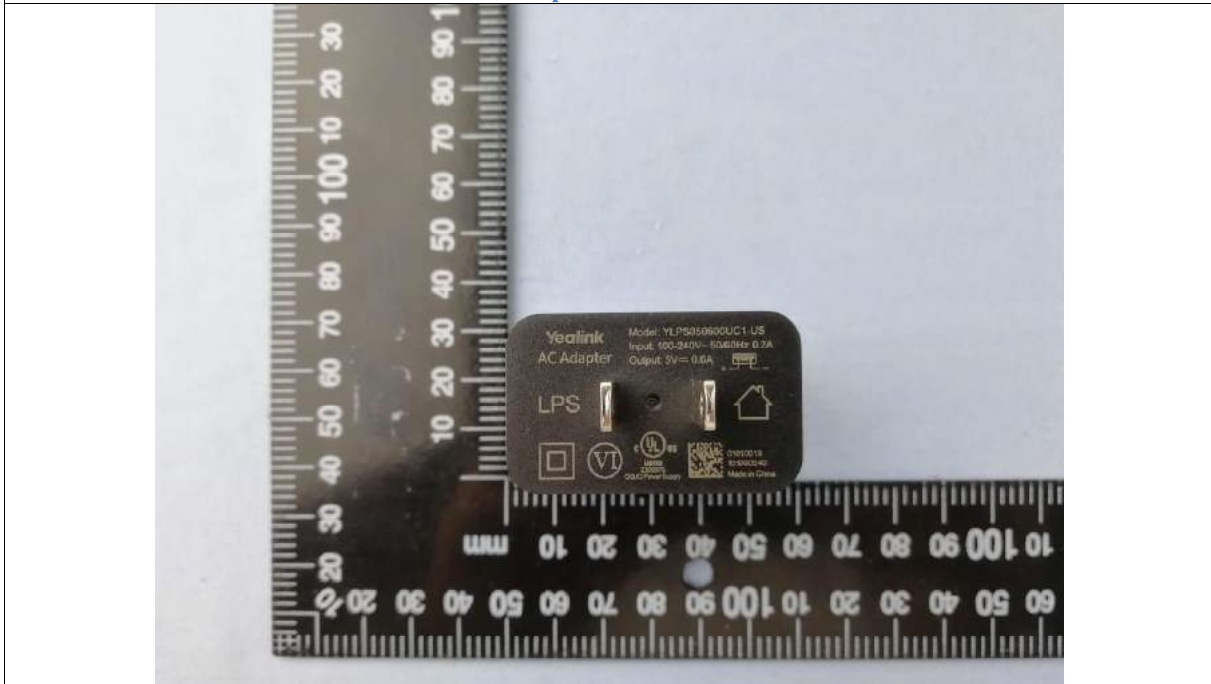


Ant

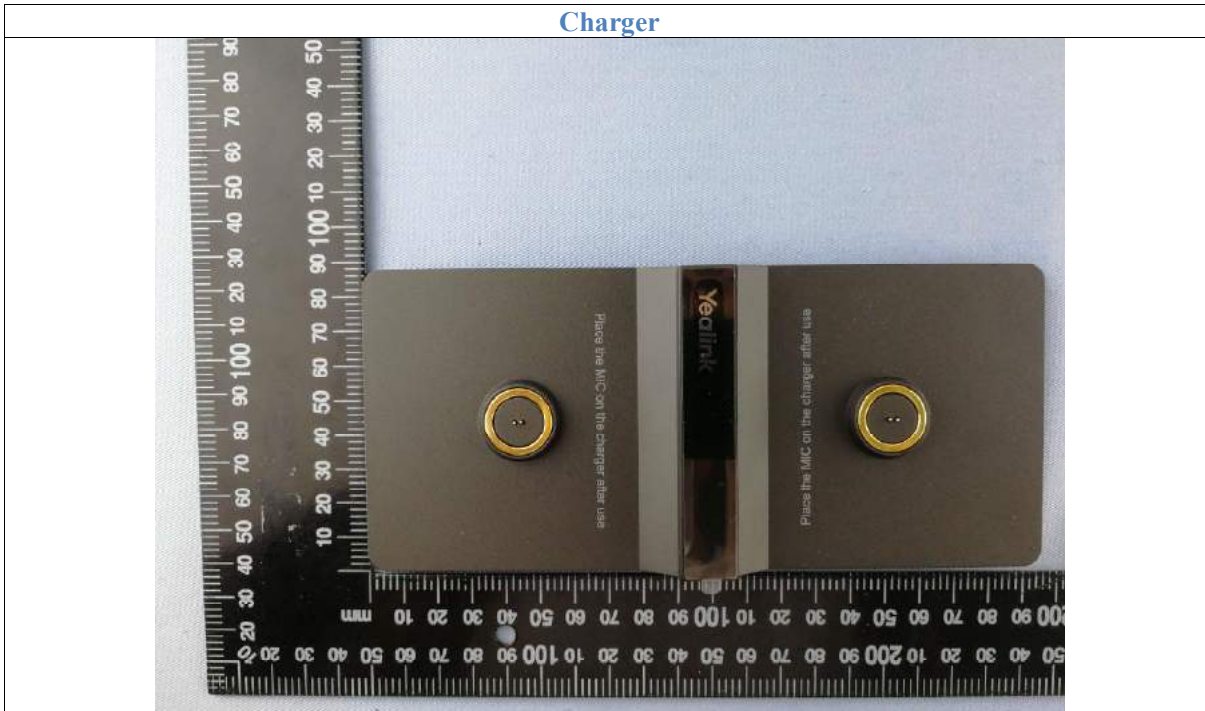
Adapter top view



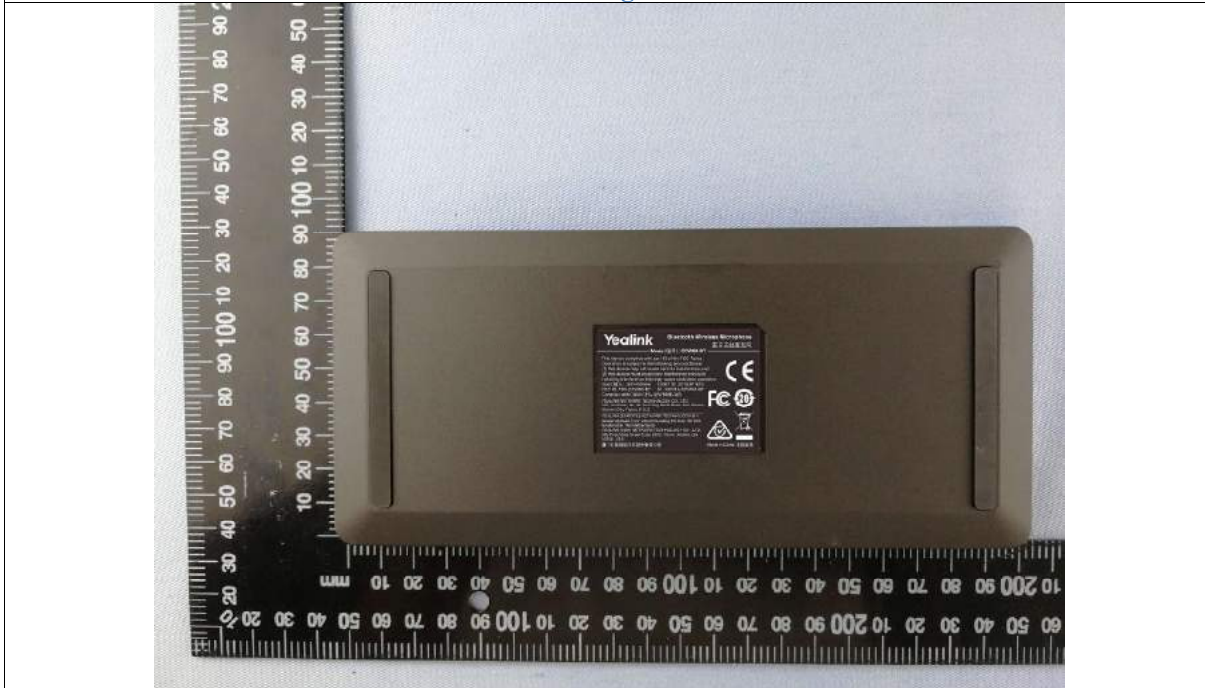
Adapter side view



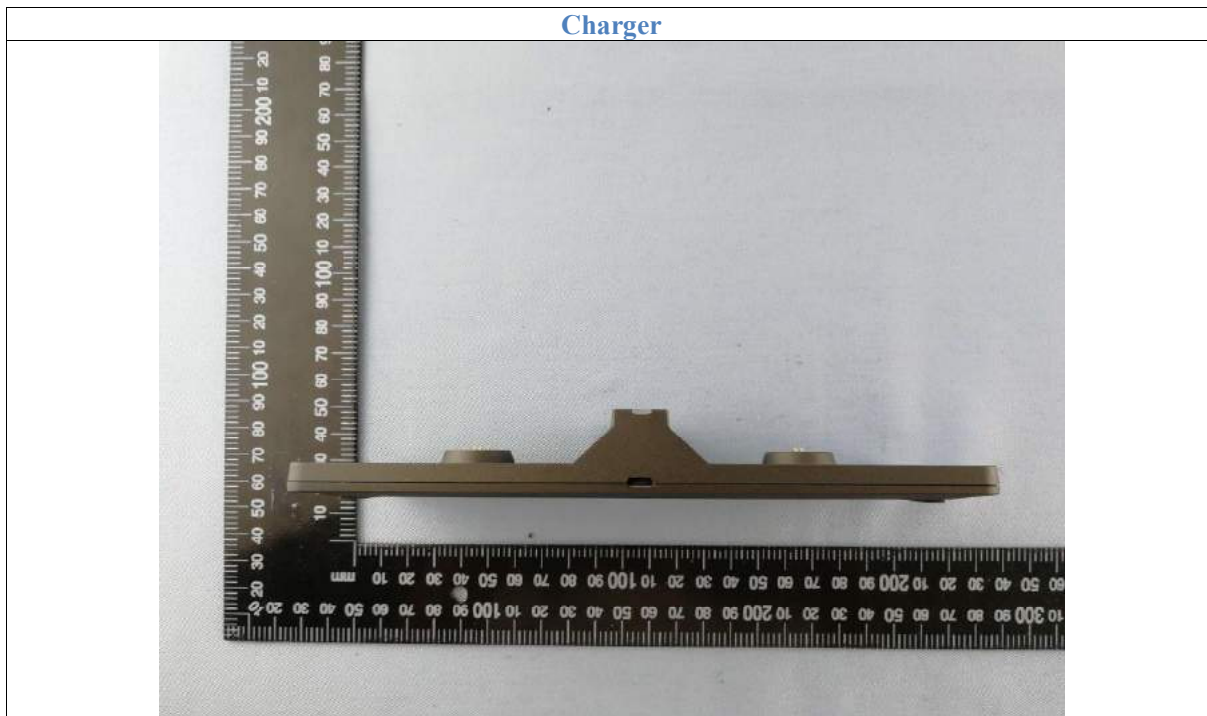
Charger



Charger



Charger



9. FCC ID Label



The following note shall be conspicuously placed in the user manual: **“Operation is subject to the following two conditions: (1) this device may not cause interference, and(2) this device must accept any interference, including interference that may cause undesired operation of this device.”**

The Label must not be a stick-on paper label. The Label on these products must be permanently affixed to the product and readily visible at the time of purchase and must last the expected lifetime of the equipment not be readily detachable.



10. Test Equipment

The following test equipments were used during the radiated & conducted emission test:

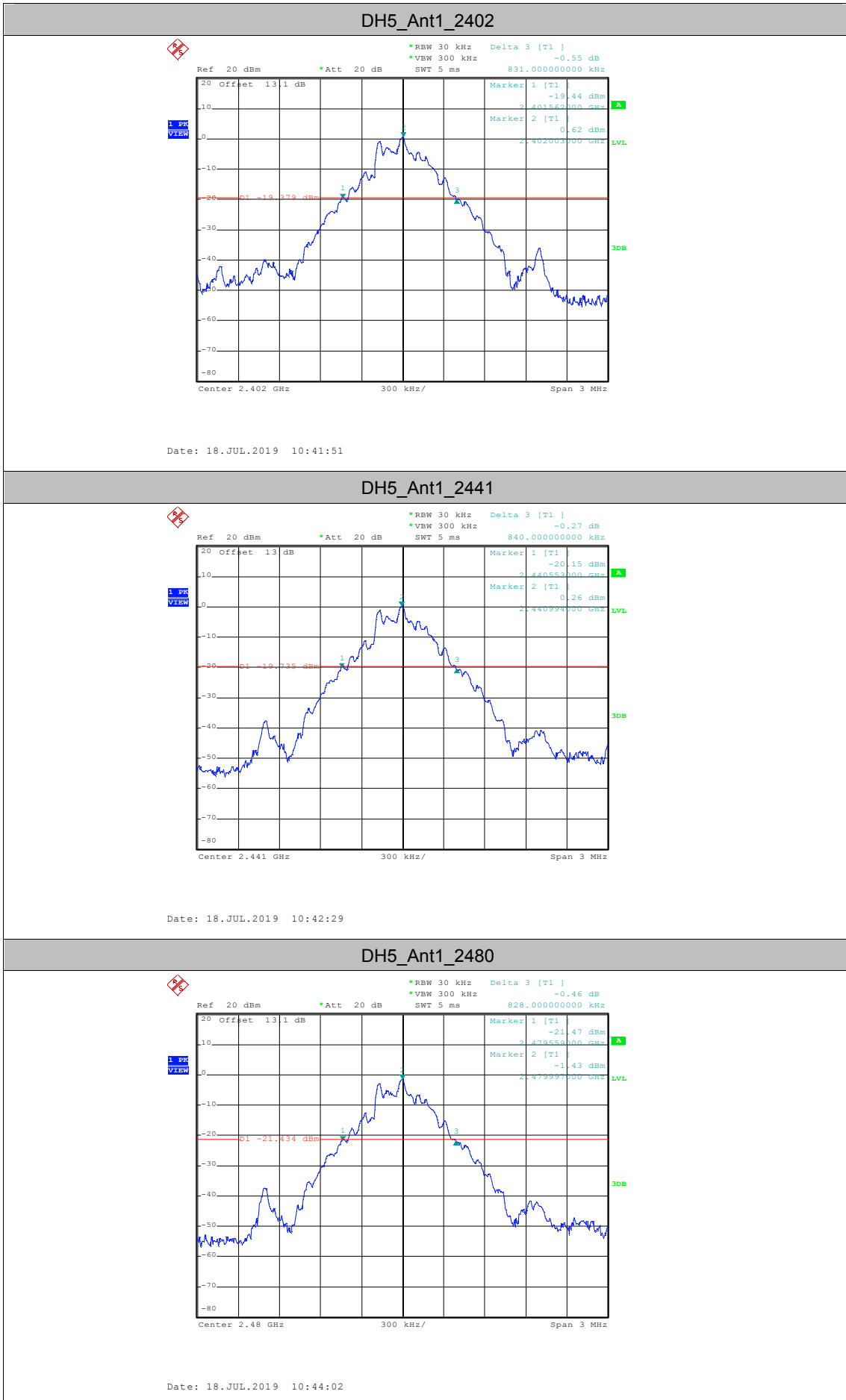
Equipment/ Facilities	Manufacturer	Model #	Serial No.	Cal/Char Date	Due Date
Turntable	Innco systems GmbH	CT-0801	N/A	NCR	NCR
Antenna Tower	Innco systems GmbH	MA-4640-XP-ET	N/A	NCR	NCR
Controller	Innco systems GmbH	CO3000	955/38850716L	NCR	NCR
Pre-Amplifier	Agilent	87405C	MY47010722	Dec.6, 2017	Dec.6, 2019
Pre-Amplifier	Com-Power	PAM-840	N/A	Dec.6, 2017	Dec.6, 2019
Horn Antenna	SCHWARZBECK	BBHA 9170	N/A	Dec.6, 2017	Dec.6, 2019
EMI Test Receiver	Rohde & Schwarz	ESR7	101091	Nov. 21, 2018	Nov. 21, 2020
Spectrum Analyzer	Rohde & Schwarz	FSP40	100273	Dec.14, 2017	Dec.14, 2019
Loop Antenna	Rohde & Schwarz	HFH2-Z2	100022	Feb.21, 2018	Feb.21, 2020
Trilog-Super Broadband Antenna	SCHWARZBECK	VULB9161	9161-4079	Nov. 27, 2018	Nov. 27, 2021
Broad-Band Horn Antenna	SCHWARZBECK	BBHA 9120D	9120D-565	Nov. 29, 2018	Nov. 29, 2021
AMN	Rohde & Schwarz	ESH3-Z5	100197	Dec.25, 2017	Dec.25, 2020
AMN	CYBERTEK	EM5040A	E115040054	Nov. 21, 2018	Nov. 21, 2021
KMO Shielded Room	KMO	KMO-001	N/A	NCR	NCR
Coaxial Cable with N-Connectors	SCHWARZBECK	AK9515H	95549	Sep.18, 2017	Sep.18, 2019
3m Anechoic Chamber	KMO	KMO-3AC	N/A	Dec.23, 2017	Dec.23, 2019
Temperature Chamber	TABAI	PSL-4GTW	N/A	Feb.10, 2019	Feb.10, 2021

-----End of Report-----

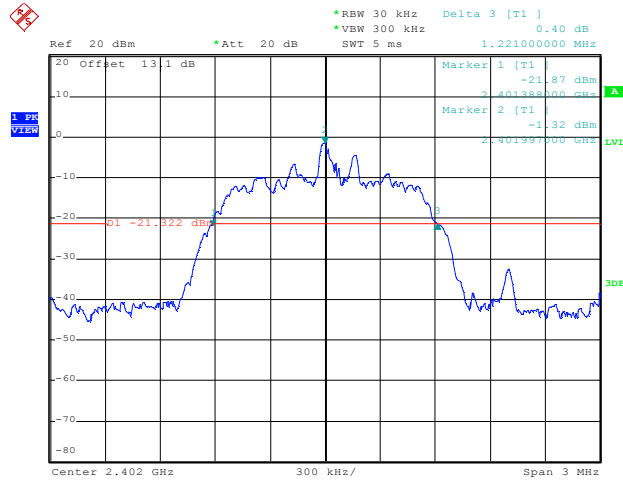
AppendixA: 20dBEmission Bandwidth**Test Result**

TestMode	Antenna	Channel	20db EBW[MHz]	FL[MHz]	FH[MHz]	Limit[MHz]	Verdict
DH5	Ant1	2402	0.831	2401.562	2402.393	---	PASS
		2441	0.840	2440.553	2441.393	---	PASS
		2480	0.828	2479.559	2480.387	---	PASS
2DH5	Ant1	2402	1.221	2401.388	2402.609	---	PASS
		2441	1.236	2440.367	2441.603	---	PASS
		2480	1.227	2479.370	2480.597	---	PASS
3DH5	Ant1	2402	1.296	2401.349	2402.645	---	PASS
		2441	1.266	2440.349	2441.615	---	PASS
		2480	1.266	2479.349	2480.615	---	PASS

Test Graphs

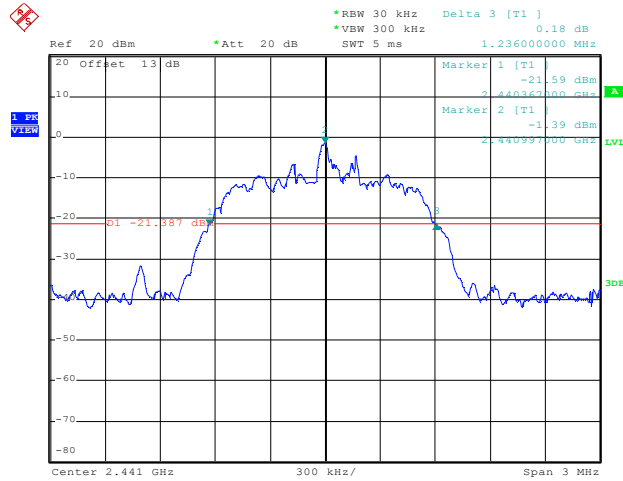


2DH5_Ant1_2402



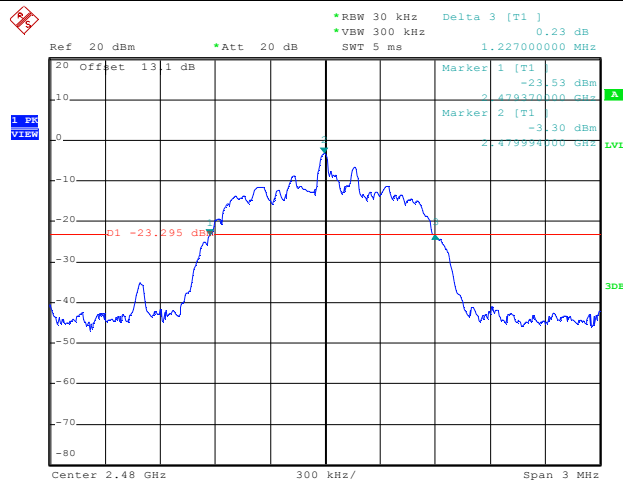
Date: 18.JUL.2019 10:47:24

2DH5_Ant1_2441



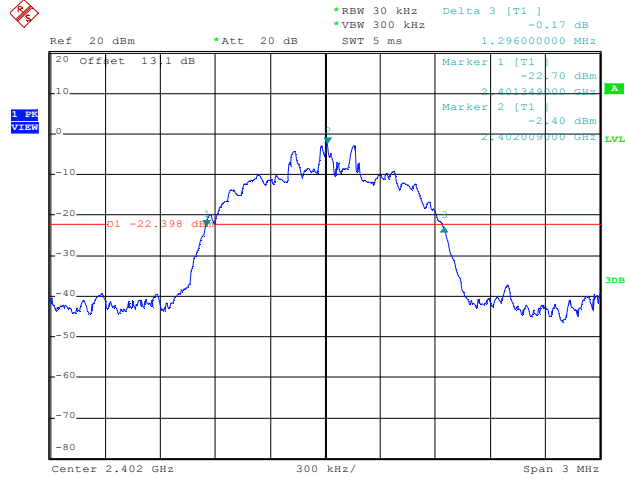
Date: 18.JUL.2019 10:52:17

2DH5_Ant1_2480



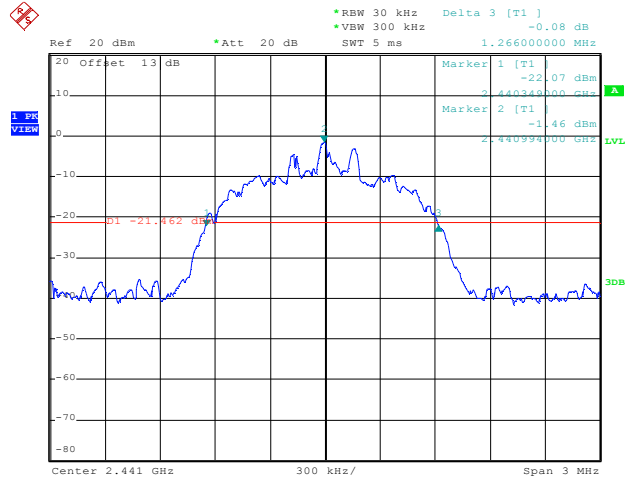
Date: 18.JUL.2019 10:52:47

3DH5_Ant1_2402



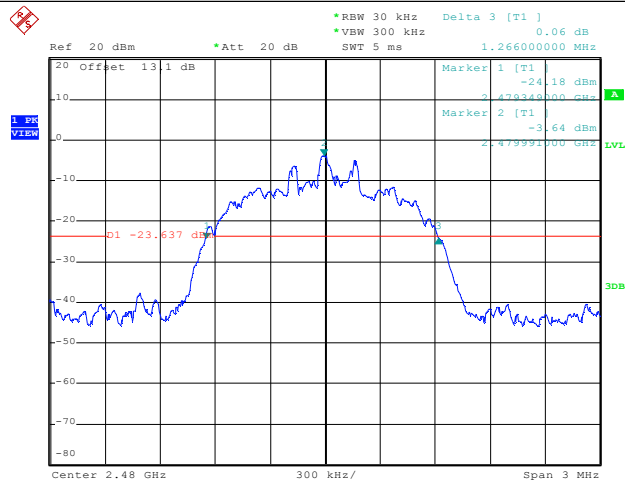
Date: 18.JUL.2019 10:54:12

3DH5_Ant1_2441



Date: 18.JUL.2019 10:58:52

3DH5_Ant1_2480



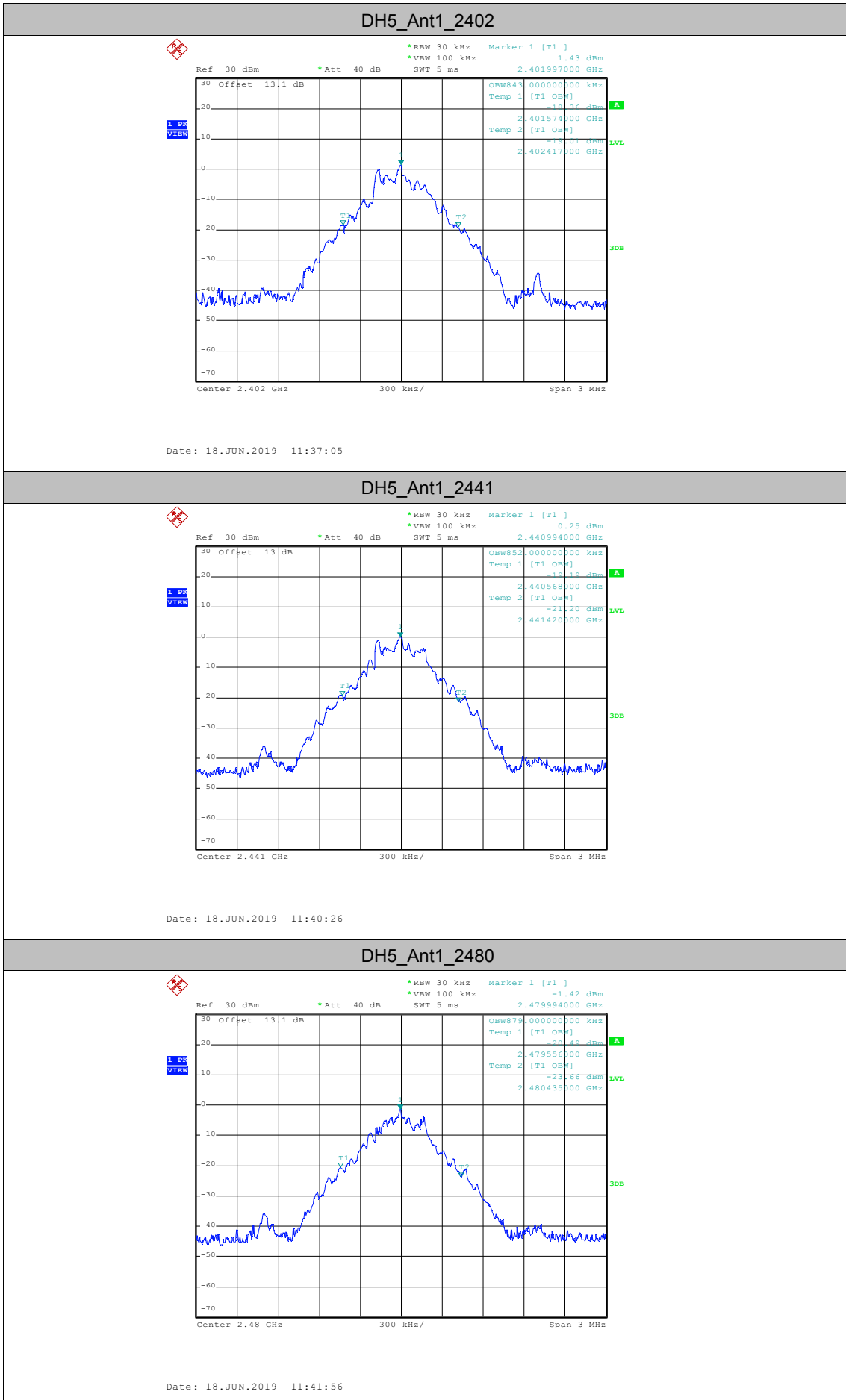
Date: 18.JUL.2019 11:02:26

AppendixB: Occupied Channel Bandwidth

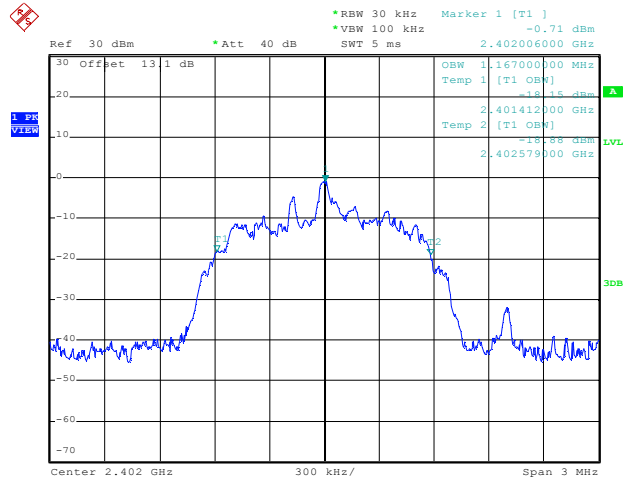
Test Result

TestMode	Antenna	Channel	OCB [MHz]	FL[MHz]	FH[MHz]	Limit[MHz]	Verdict
DH5	Ant1	2402	0.843	0.000	0.000	---	PASS
		2441	0.852	0.000	0.000	---	PASS
		2480	0.879	0.000	0.000	---	PASS
2DH5	Ant1	2402	1.167	0.000	0.000	---	PASS
		2441	1.2	0.000	0.000	---	PASS
		2480	1.206	0.000	0.000	---	PASS
3DH5	Ant1	2402	1.149	0.000	0.000	---	PASS
		2441	1.221	0.000	0.000	---	PASS
		2480	1.209	0.000	0.000	---	PASS

Test Graphs

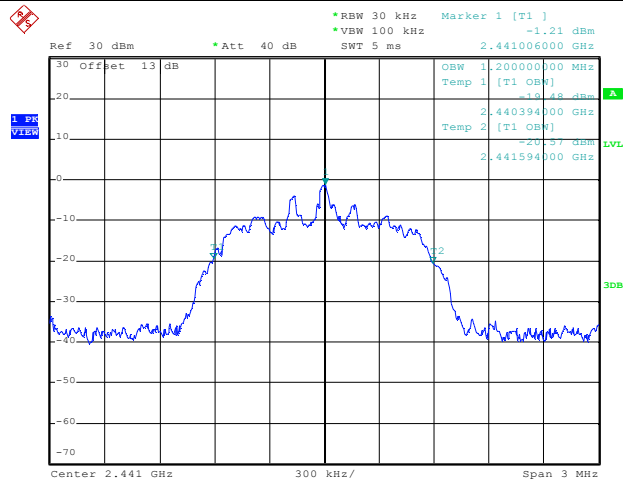


2DH5_Ant1_2402



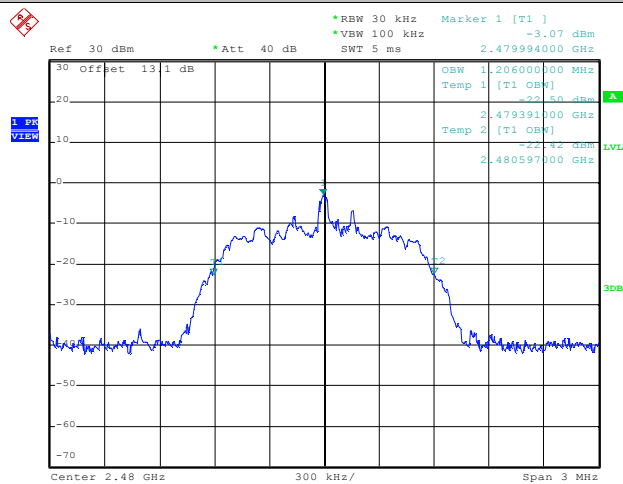
Date: 18.JUN.2019 11:45:10

2DH5_Ant1_2441



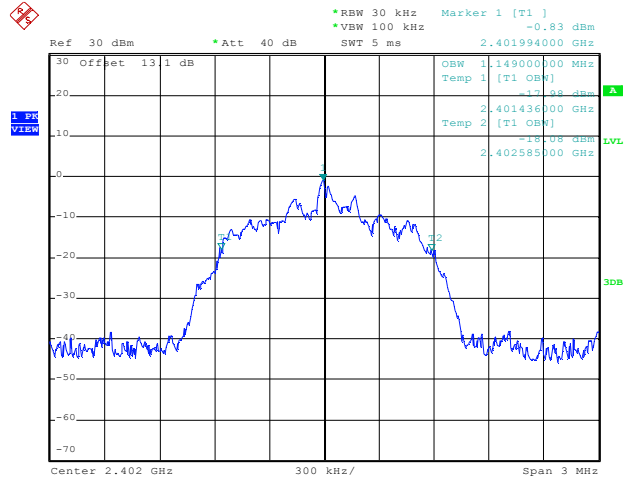
Date: 18.JUN.2019 11:48:32

2DH5_Ant1_2480



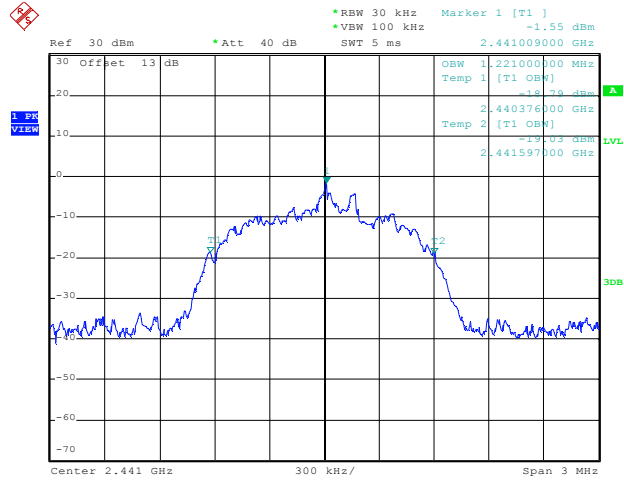
Date: 18.JUN.2019 11:50:01

3DH5_Ant1_2402



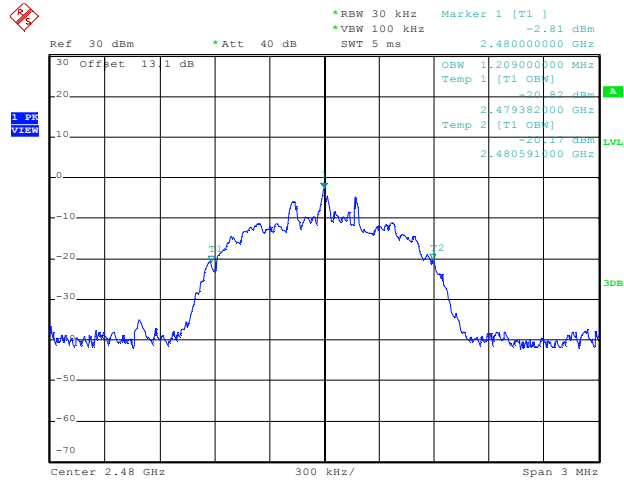
Date: 18.JUN.2019 11:52:44

3DH5_Ant1_2441



Date: 18.JUN.2019 11:56:07

3DH5_Ant1_2480



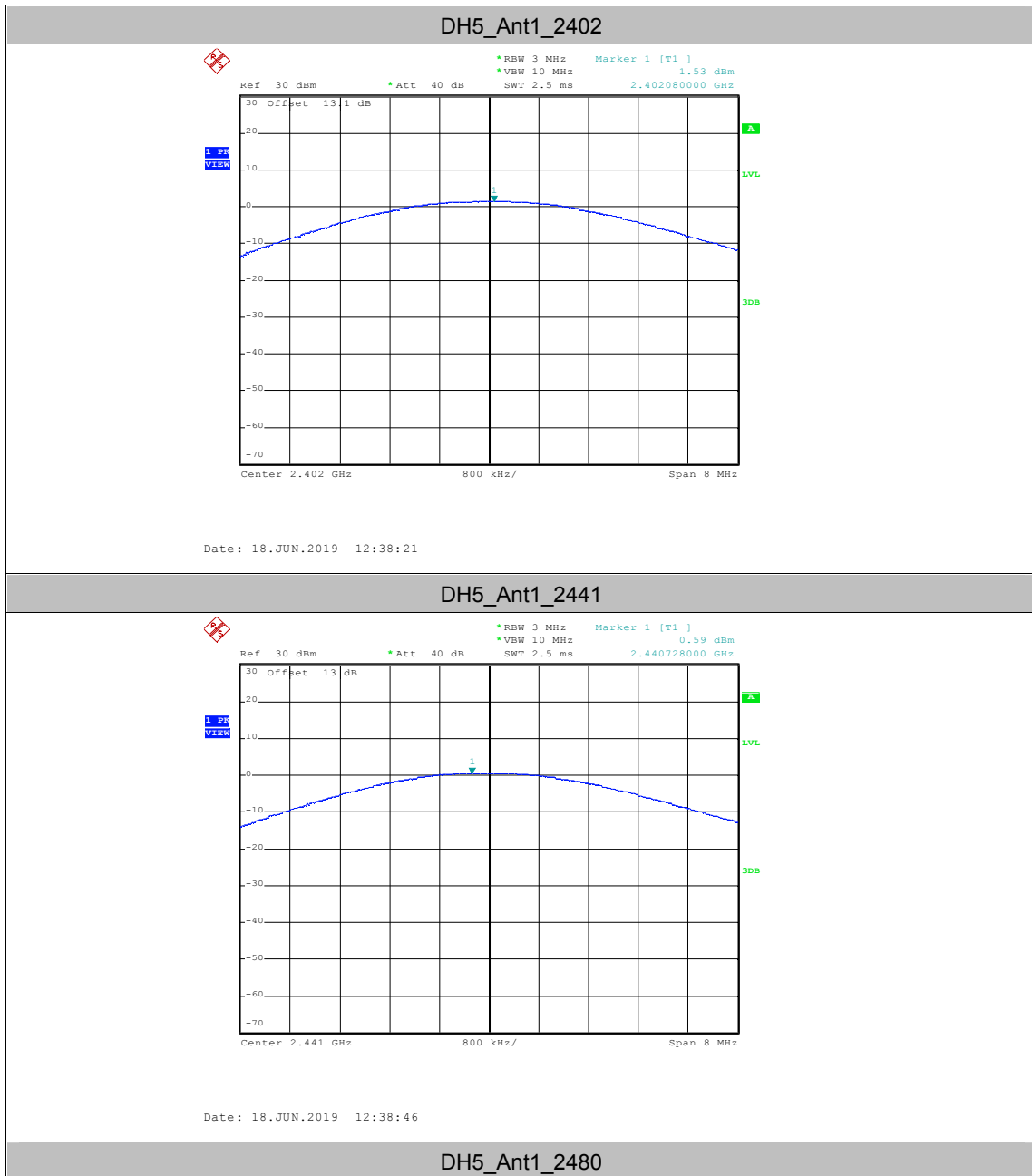
Date: 18.JUN.2019 11:59:35

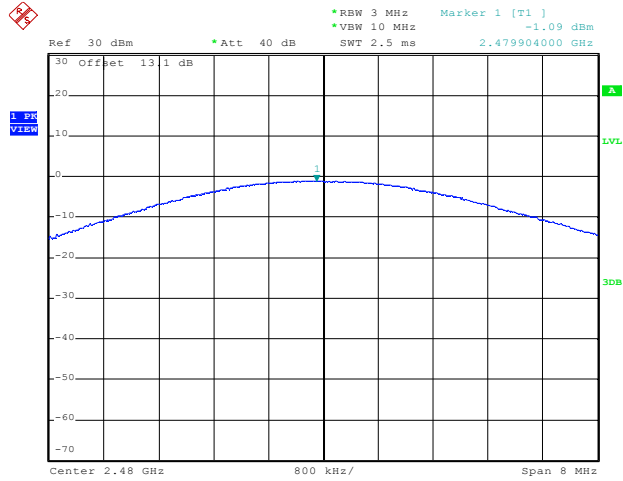
AppendixC: Maximum conducted output power

Test Result

TestMode	Antenna	Channel	Result	Limit	Verdict
DH5	Ant1	2402	1.53	<=30	PASS
		2441	0.59	<=30	PASS
		2480	-1.09	<=30	PASS
2DH5	Ant1	2402	0.28	<=30	PASS
		2441	-0.48	<=30	PASS
		2480	-2.16	<=30	PASS
3DH5	Ant1	2402	0.34	<=30	PASS
		2441	-0.36	<=30	PASS
		2480	-2.04	<=30	PASS

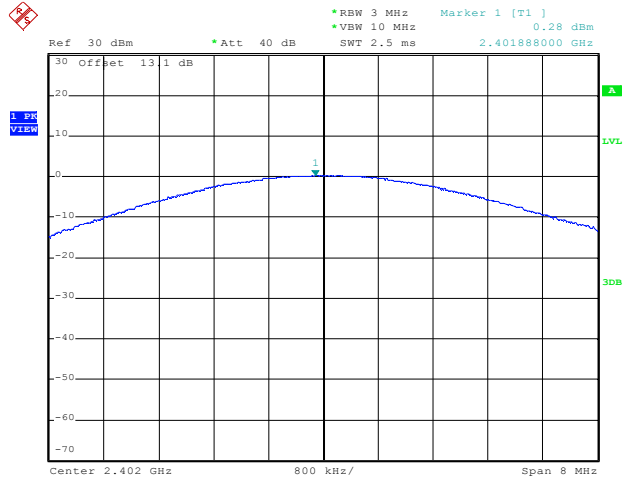
Test Graphs





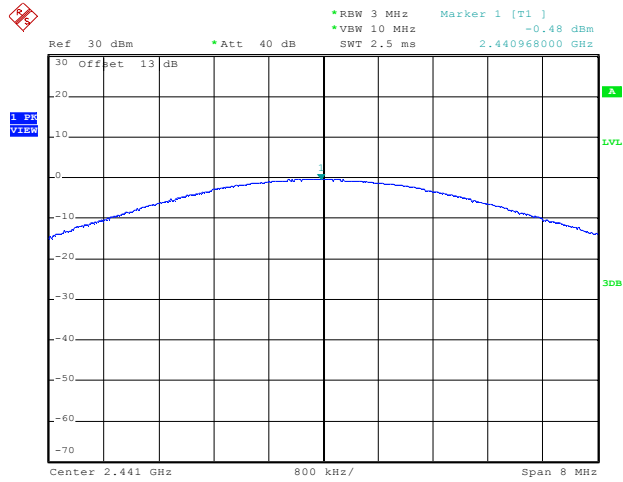
Date: 18.JUN.2019 12:39:35

2DH5_Ant1_2402



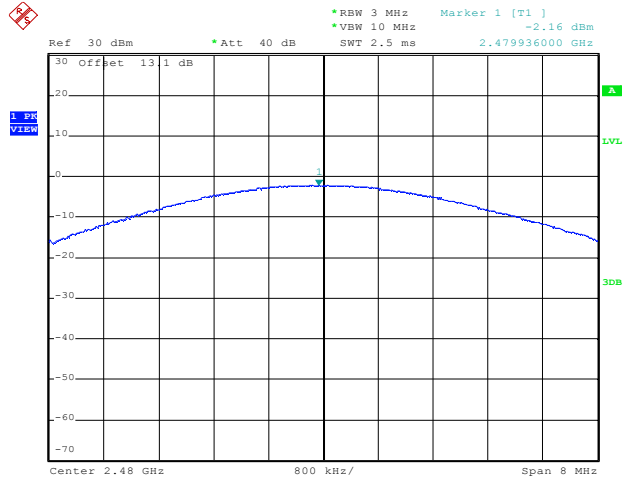
Date: 18.JUN.2019 12:40:46

2DH5_Ant1_2441



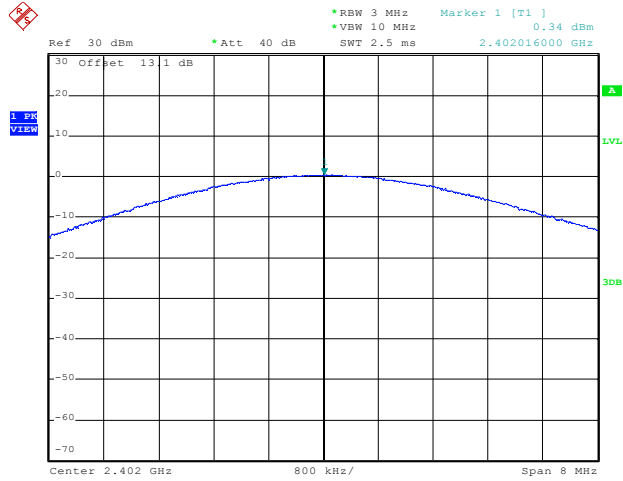
Date: 18.JUN.2019 12:41:11

2DH5_Ant1_2480



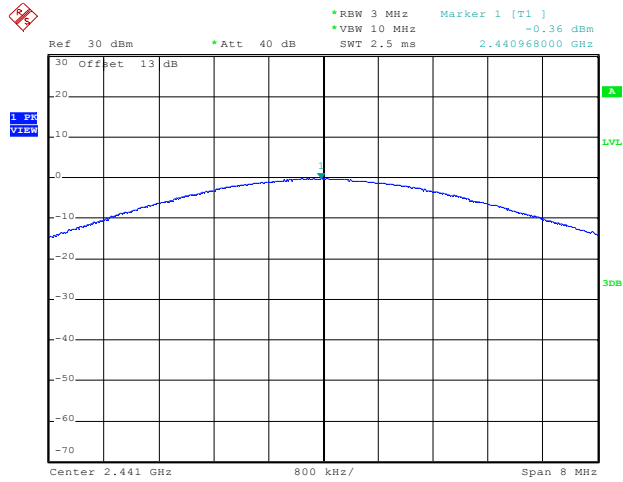
Date: 18.JUN.2019 12:42:54

3DH5_Ant1_2402



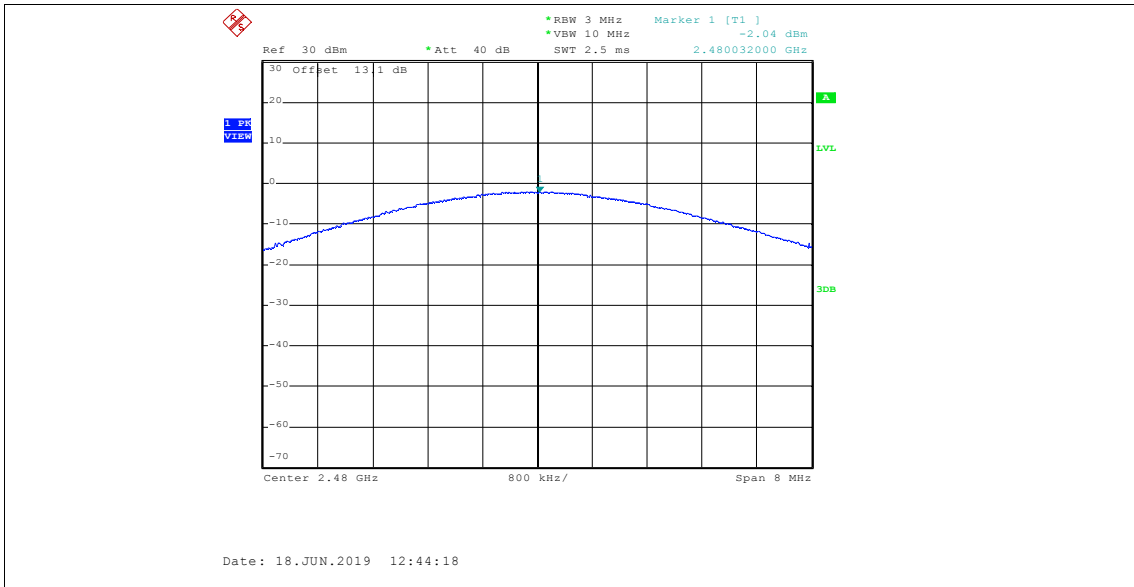
Date: 18.JUN.2019 12:43:37

3DH5_Ant1_2441



Date: 18.JUN.2019 12:44:04

3DH5_Ant1_2480

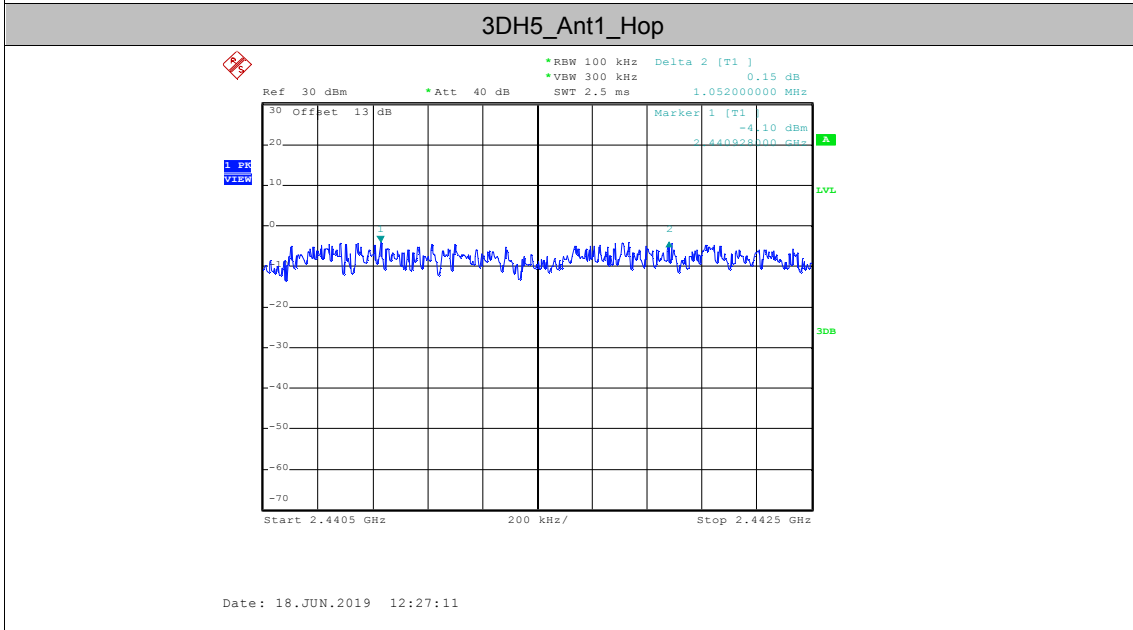
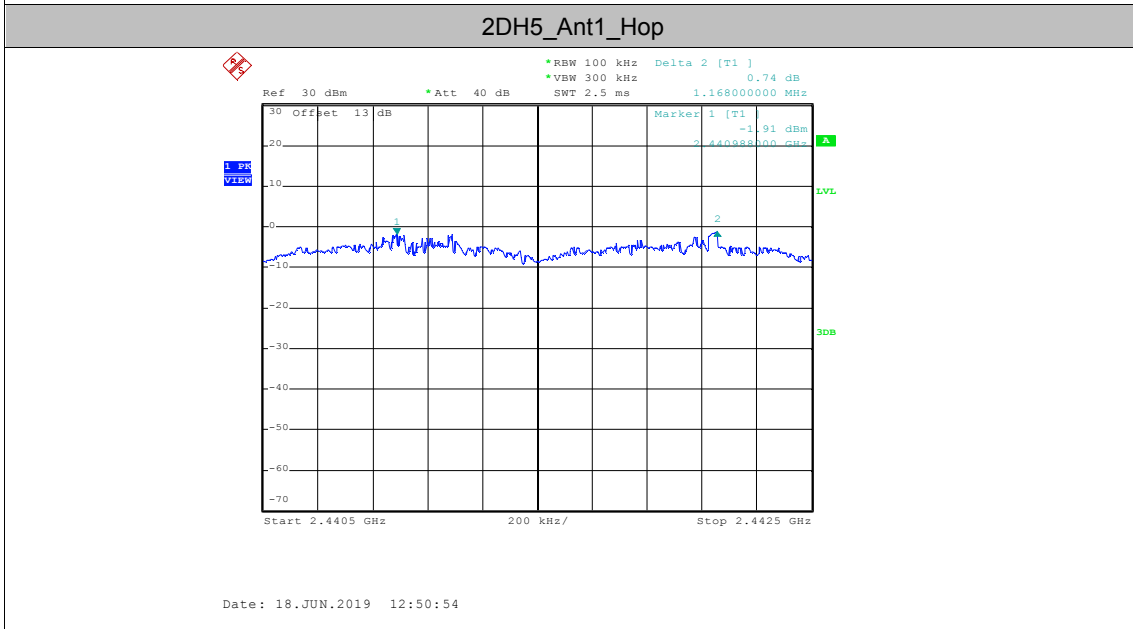
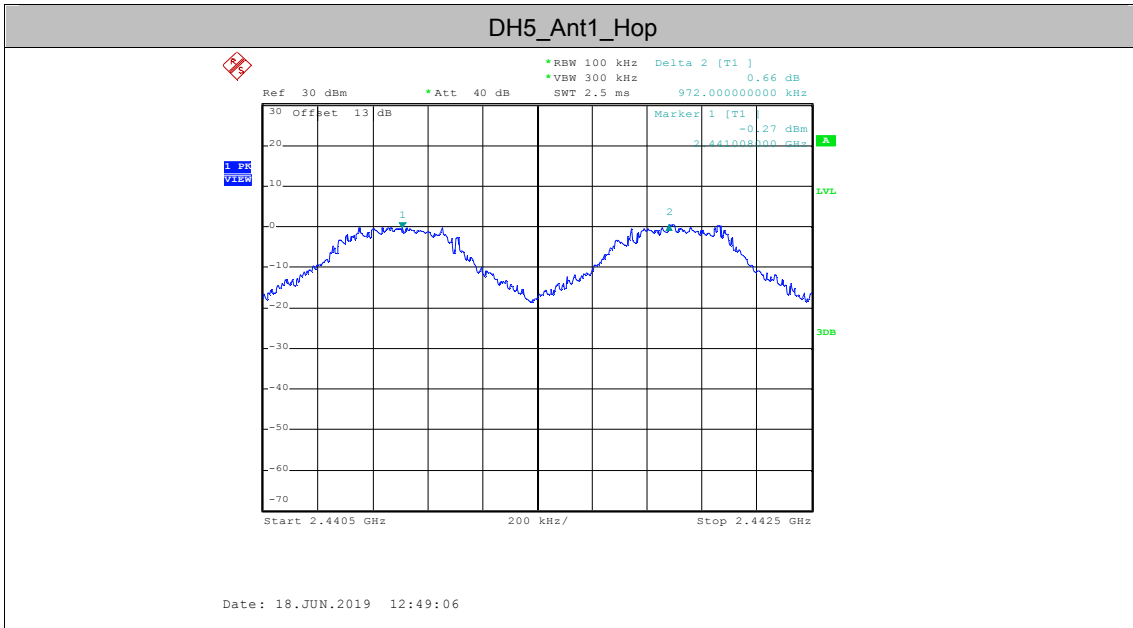


AppendixD: Carrier frequency separation

Test Result

TestMode	Antenna	Channel	Result	Limit	Verdict
DH5	Ant1	Hop	0.972	≥ 0.748	PASS
2DH5	Ant1	Hop	1.168	≥ 0.934	PASS
3DH5	Ant1	Hop	1.052	≥ 0.932	PASS

Test Graphs

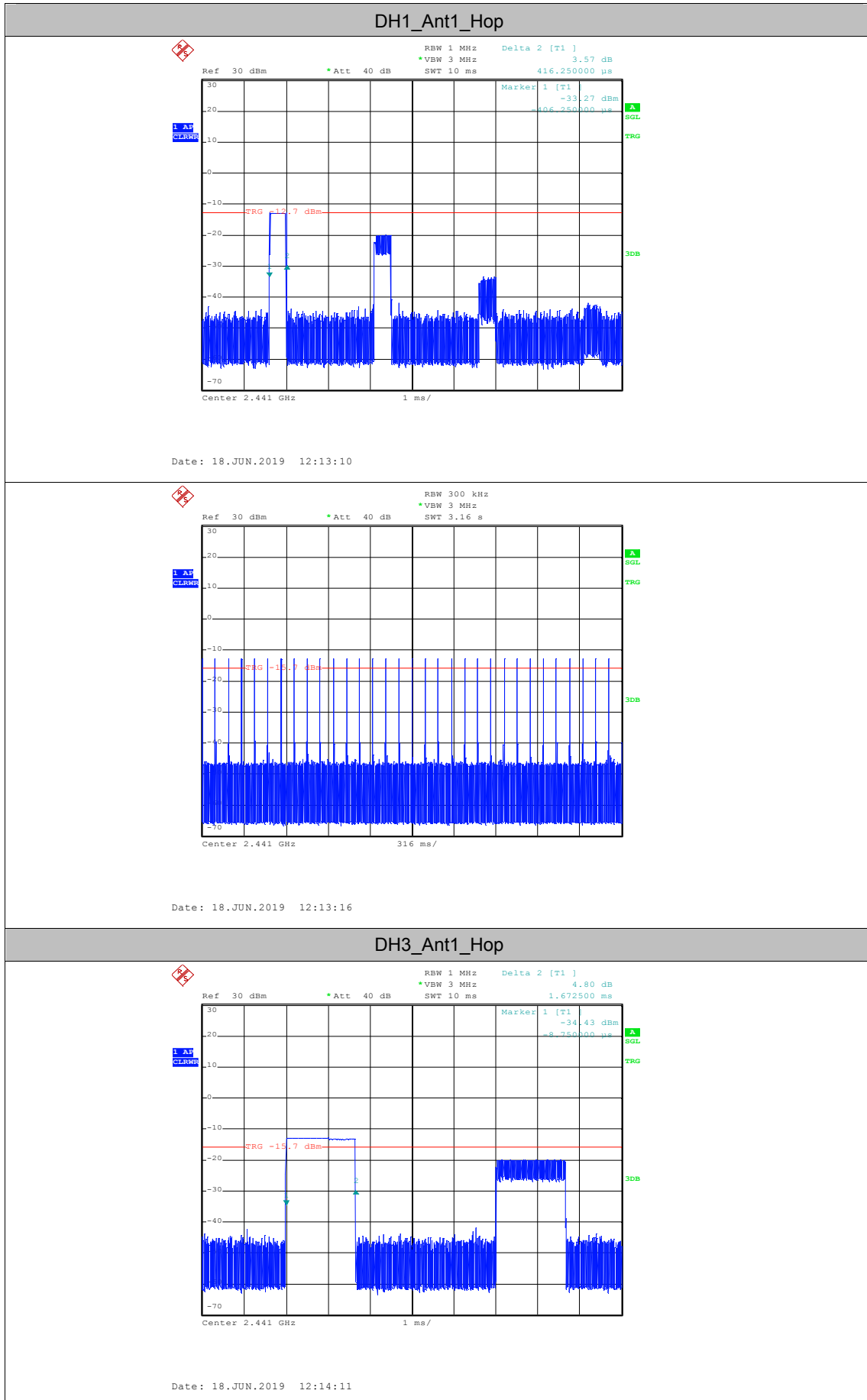


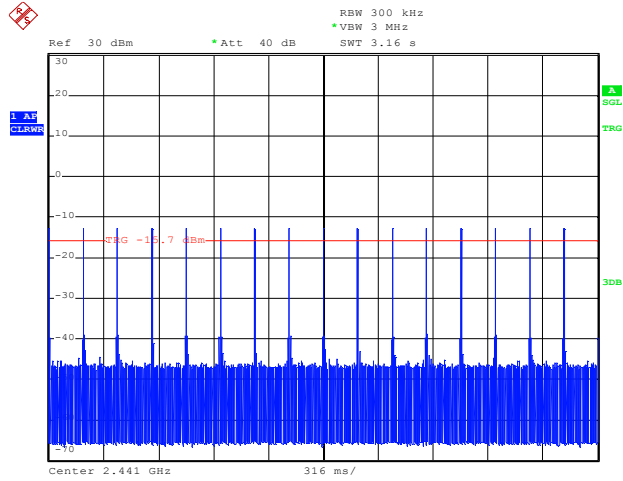
AppendixE: Time of occupancy

Test Result

TestMode	Antenna	Channel	BurstWidth	TotalHops	Result	Limit	Verdict
DH1	Ant1	Hop	0.42	320	0.133	<=0.4	PASS
DH3	Ant1	Hop	1.67	160	0.268	<=0.4	PASS
DH5	Ant1	Hop	2.92	110	0.321	<=0.4	PASS
2DH1	Ant1	Hop	0.43	320	0.138	<=0.4	PASS
2DH3	Ant1	Hop	1.68	160	0.269	<=0.4	PASS
2DH5	Ant1	Hop	2.93	110	0.322	<=0.4	PASS
3DH1	Ant1	Hop	0.43	320	0.138	<=0.4	PASS
3DH3	Ant1	Hop	1.68	160	0.269	<=0.4	PASS
3DH5	Ant1	Hop	2.93	110	0.322	<=0.4	PASS

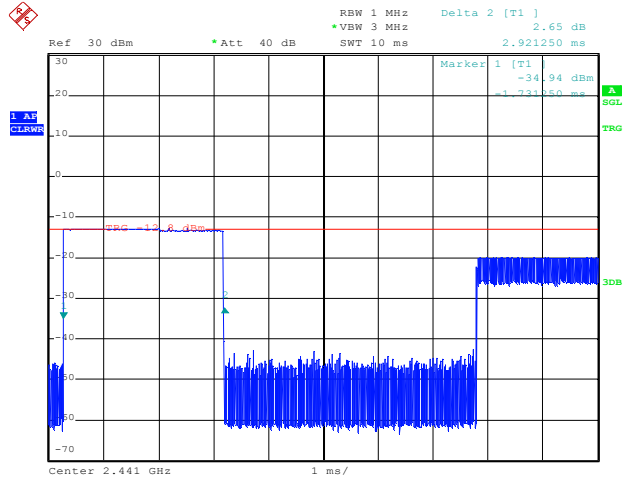
Test Graphs



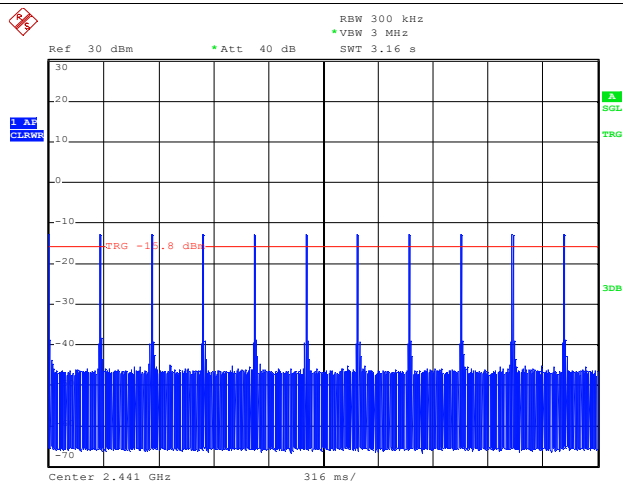


Date: 18.JUN.2019 12:14:17

DH5_Ant1_Hop

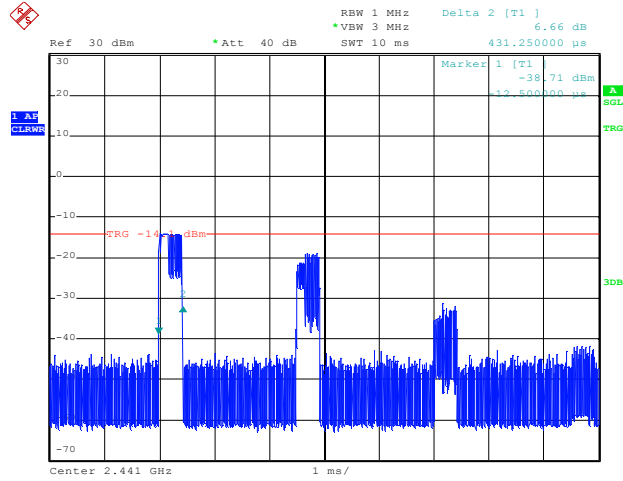


Date: 18.JUN.2019 12:12:29

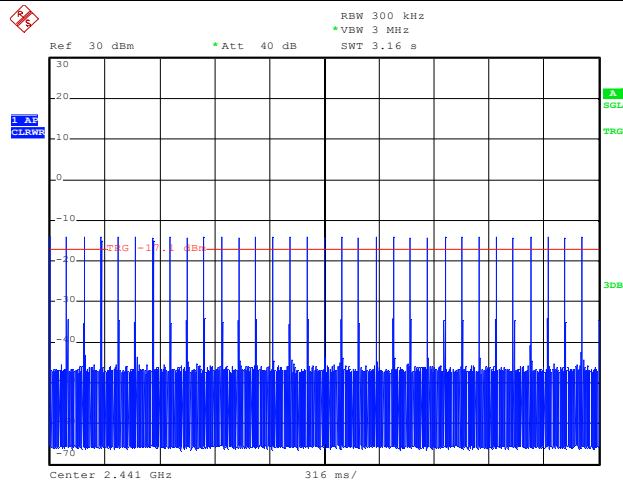


Date: 18.JUN.2019 12:12:35

2DH1_Ant1_Hop

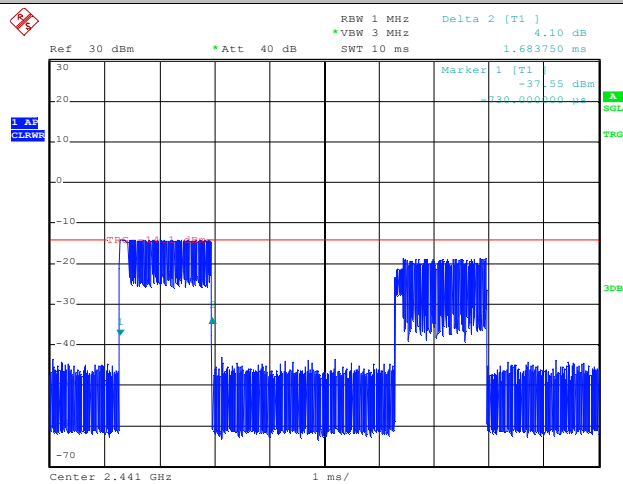


Date: 18.JUN.2019 12:21:50

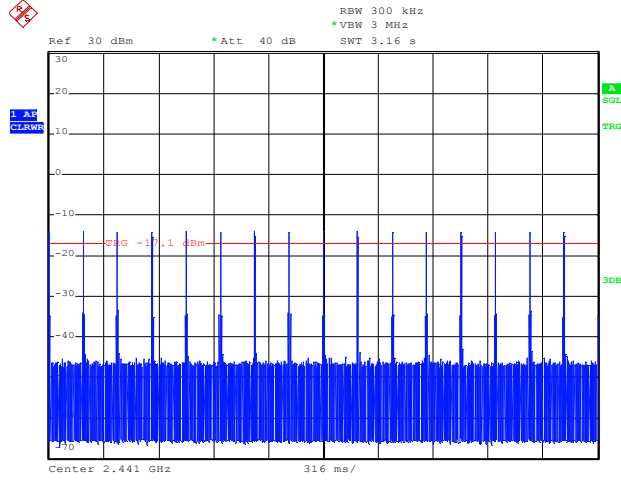


Date: 18.JUN.2019 12:21:56

2DH3_Ant1_Hop

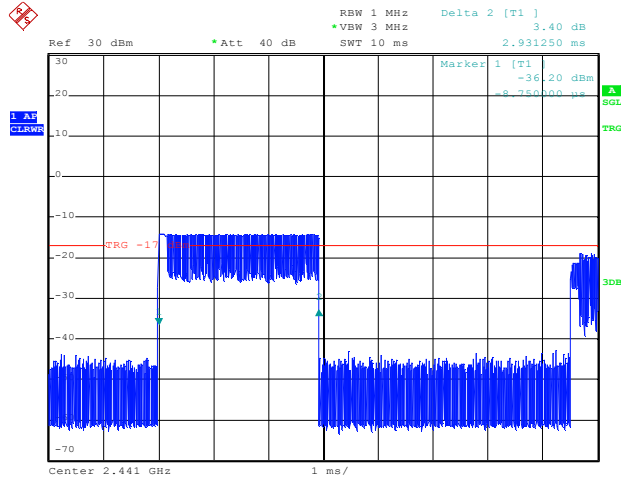


Date: 18.JUN.2019 12:22:32

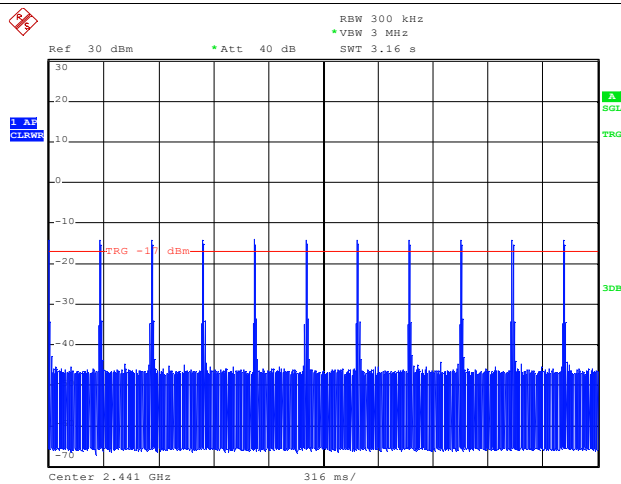


Date: 18.JUN.2019 12:22:39

2DH5_Ant1_Hop

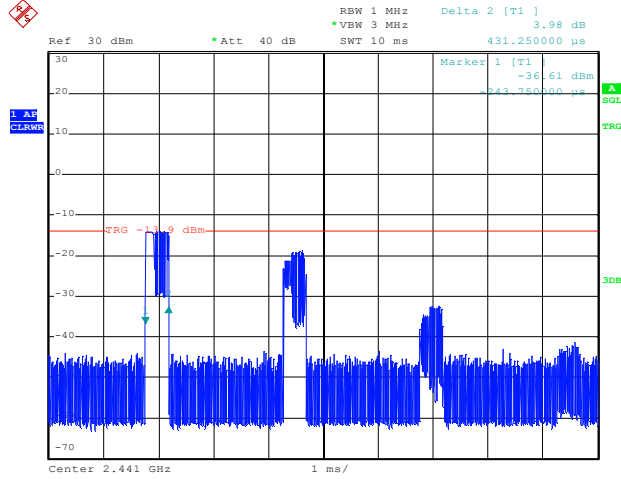


Date: 18.JUN.2019 12:21:09

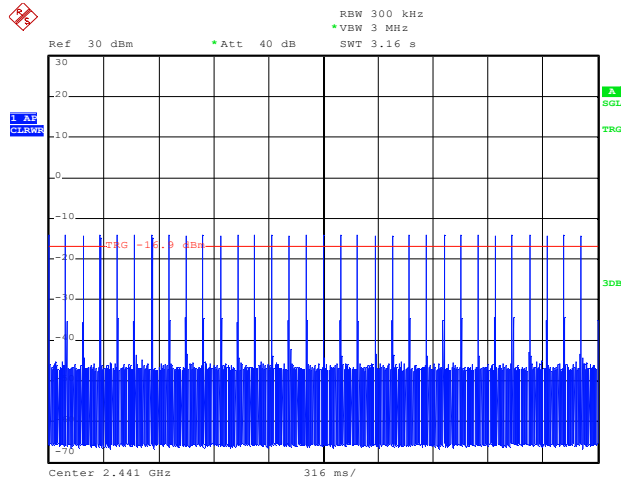


Date: 18.JUN.2019 12:21:15

3DH1_Ant1_Hop

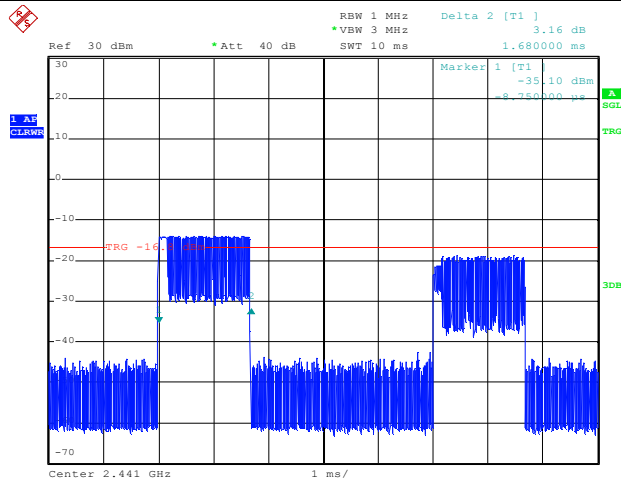


Date: 18.JUN.2019 12:29:44

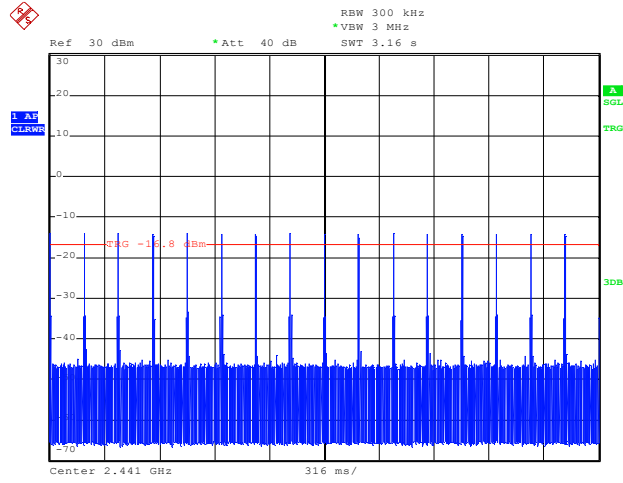


Date: 18.JUN.2019 12:29:49

3DH3_Ant1_Hop

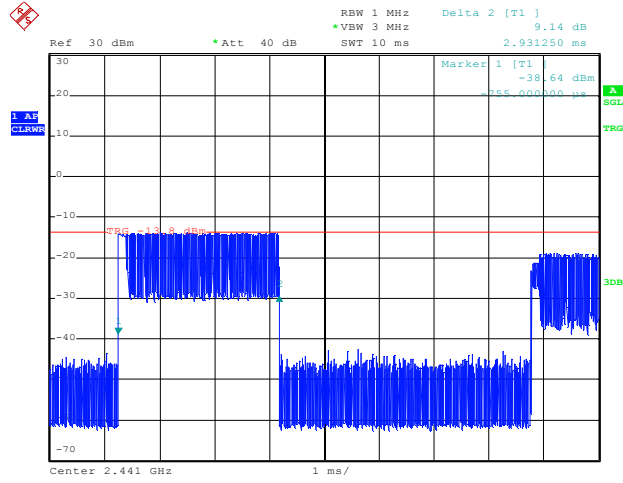


Date: 18.JUN.2019 12:30:30

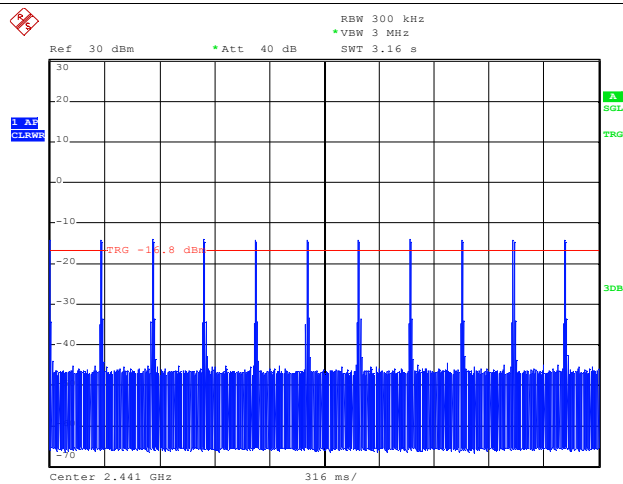


Date: 18.JUN.2019 12:30:36

3DH5_Ant1_Hop



Date: 18.JUN.2019 12:27:53



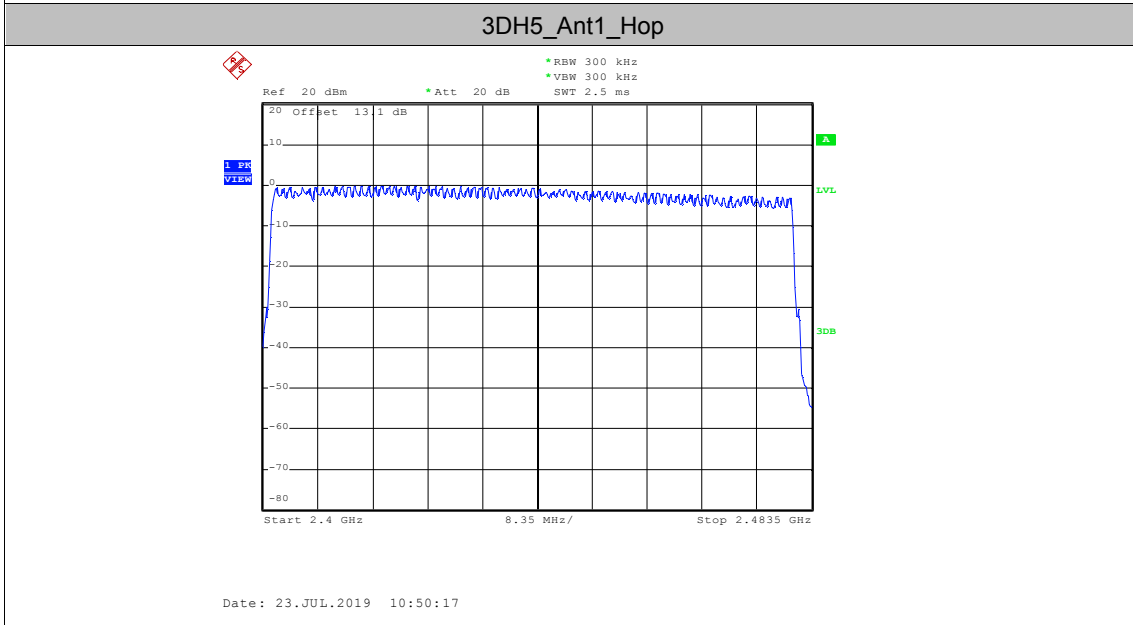
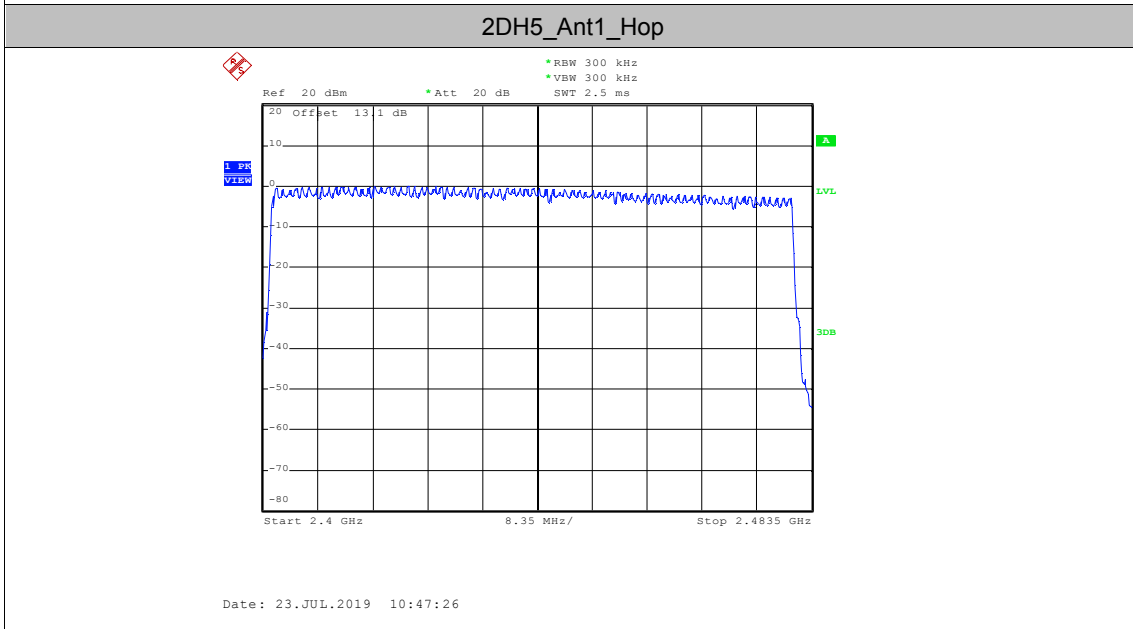
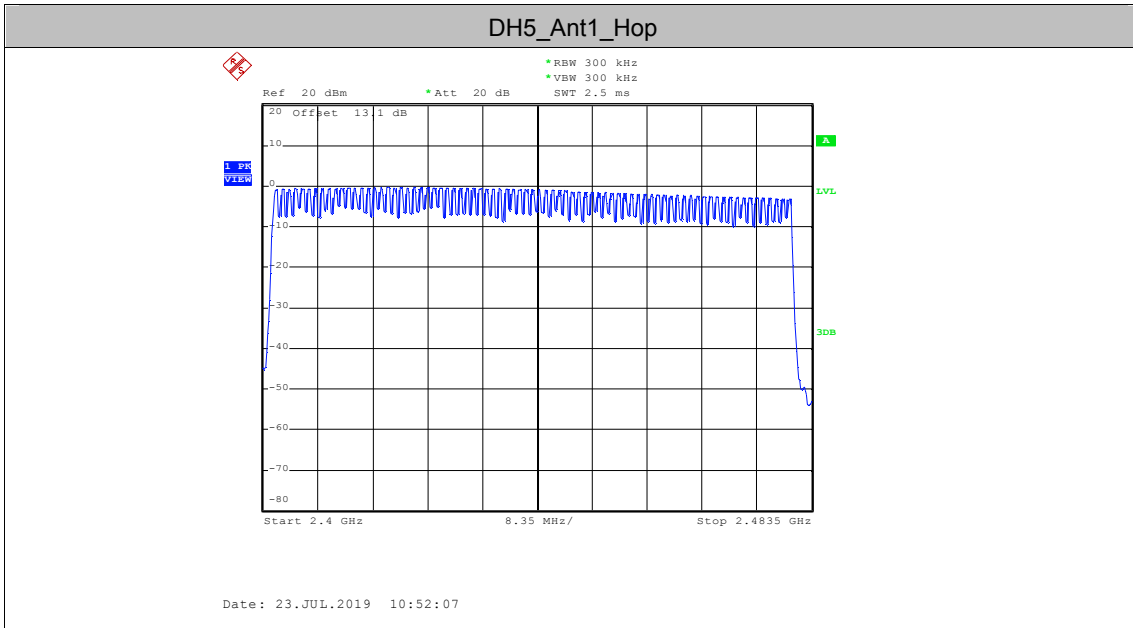
Date: 18.JUN.2019 12:27:59

AppendixF: Number of hopping channels

Test Result

TestMode	Antenna	Channel	Result	Limit	Verdict
DH5	Ant1	Hop	79	>=15	PASS
2DH5	Ant1	Hop	79	>=15	PASS
3DH5	Ant1	Hop	79	>=15	PASS

Test Graphs

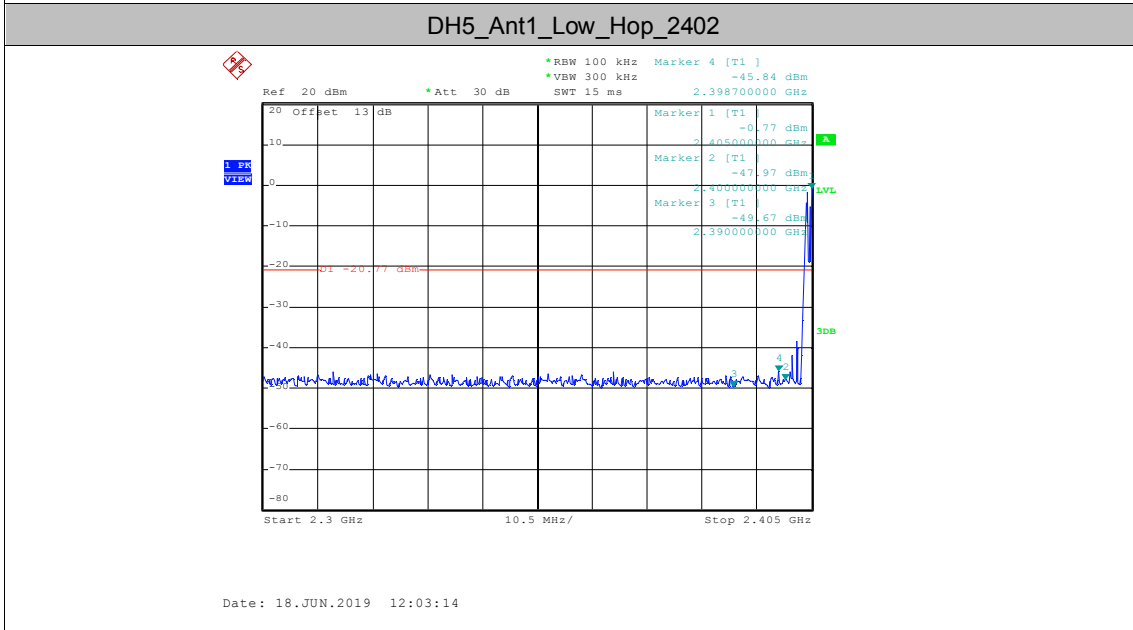
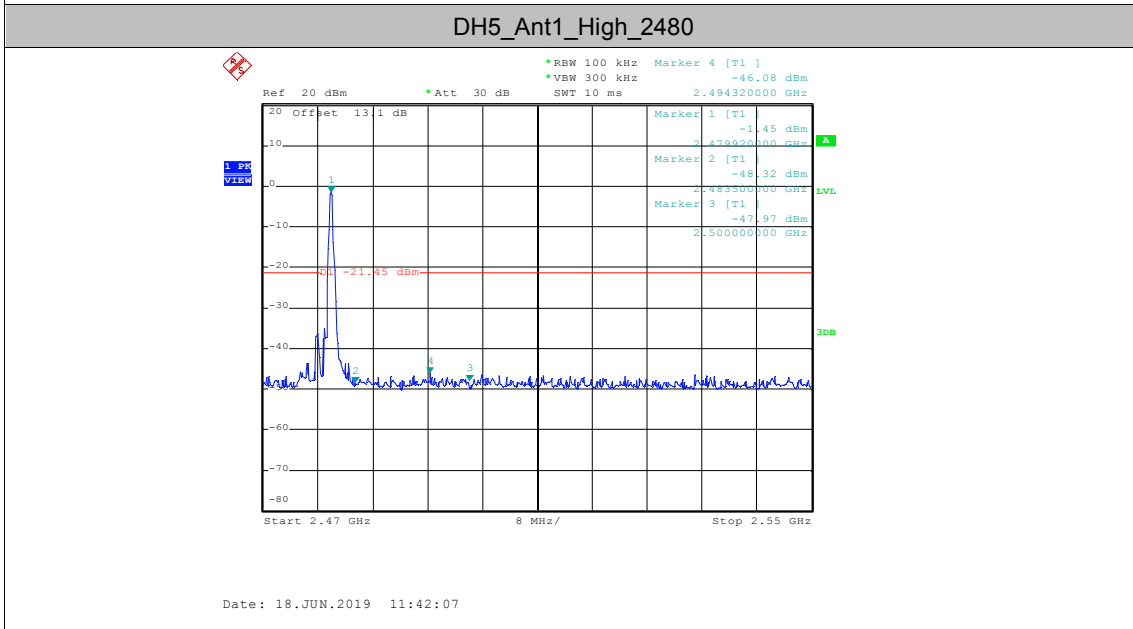
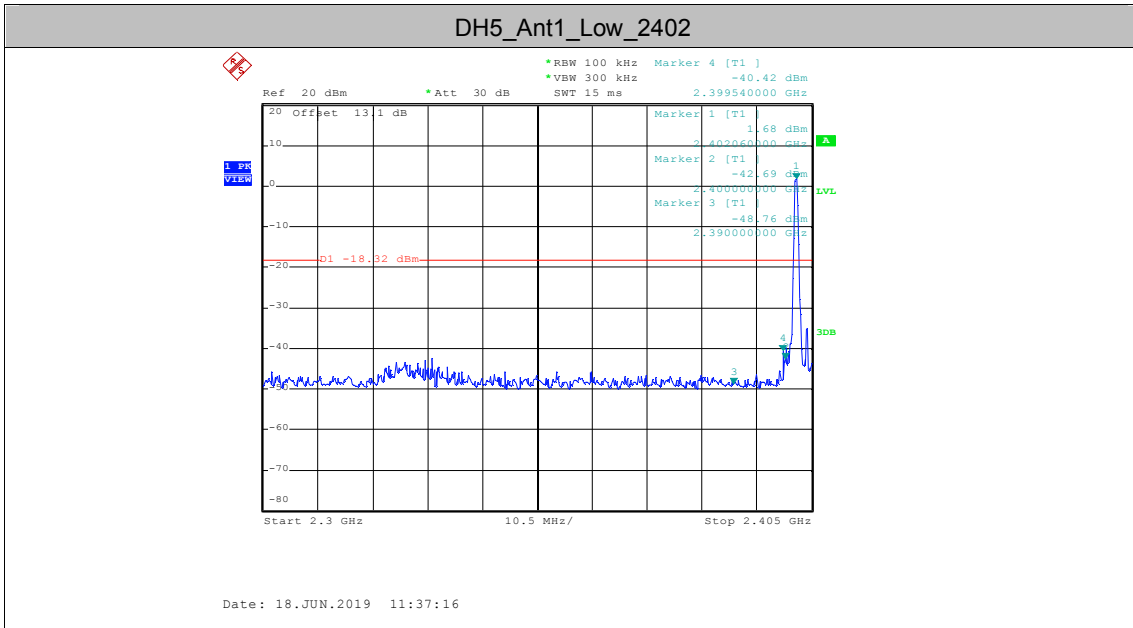


AppendixG:Band edge measurements

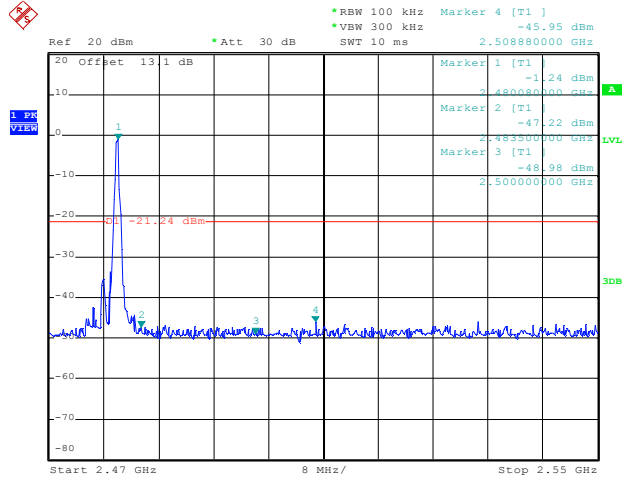
Test Result

TestMode	Antenna	ChName	Channel	RefLevel	Result	Limit	Verdict
DH5	Ant1	Low	2402	1.68	-40.42	<=-18.32	PASS
		High	2480	-1.45	-46.08	<=-21.45	PASS
		Low	Hop_2402	-0.77	-45.84	-20.77	PASS
		High	Hop_2480	-1.24	-45.95	-21.24	PASS
2DH5	Ant1	Low	2402	-0.25	-44.98	<=-20.25	PASS
		High	2480	-2.64	-46.07	<=-22.64	PASS
		Low	Hop_2402	-0.37	-45	-20.37	PASS
		High	Hop_2480	-2.68	-45.81	-22.68	PASS
3DH5	Ant1	Low	2402	-0.26	-45.92	<=-20.26	PASS
		High	2480	-2.57	-45.98	<=-22.57	PASS
		Low	Hop_2402	-0.39	-45.54	-20.39	PASS
		High	Hop_2480	-2.69	-44.83	-22.69	PASS

Test Graphs

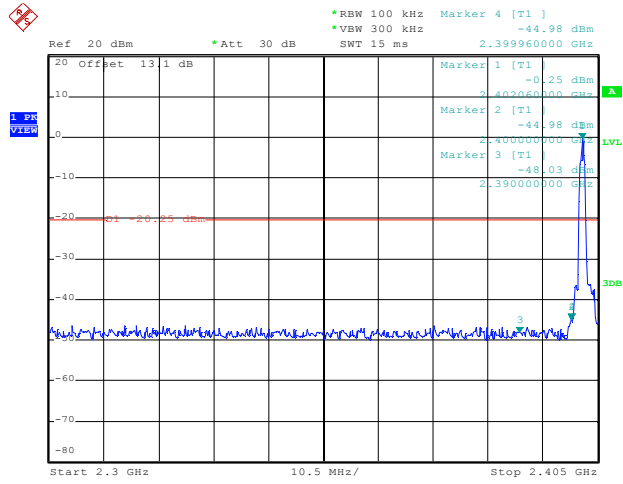


DH5_Ant1_High_Hop_2480



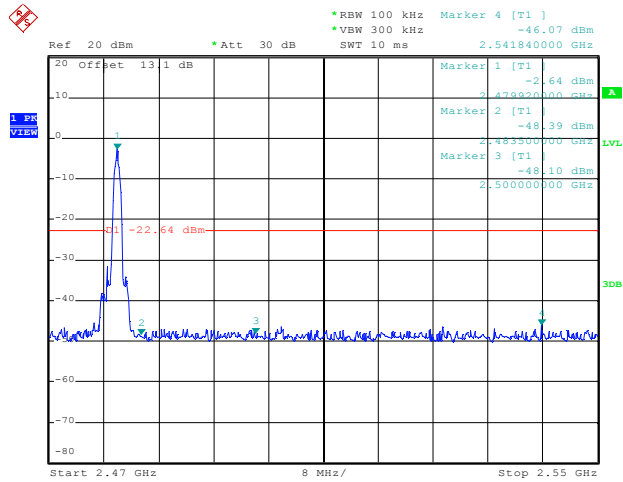
Date: 18.JUN.2019 12:17:01

2DH5_Ant1_Low_2402



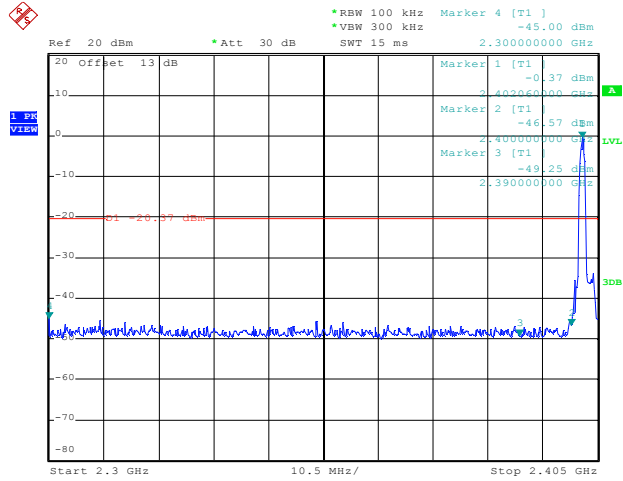
Date: 18.JUN.2019 11:45:22

2DH5_Ant1_High_2480



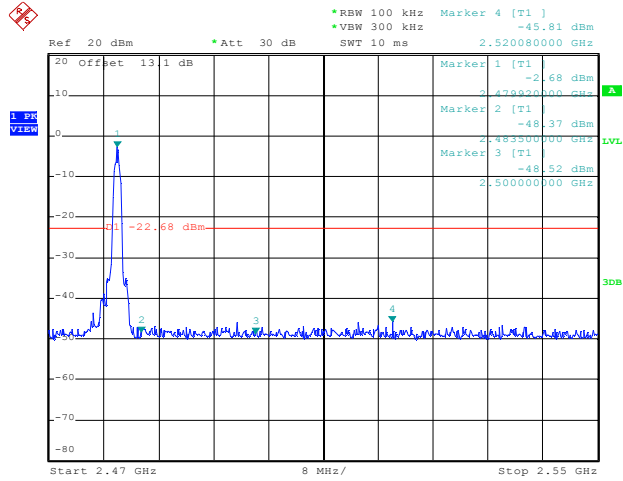
Date: 18.JUN.2019 11:50:13

2DH5_Ant1_Low_Hop_2402



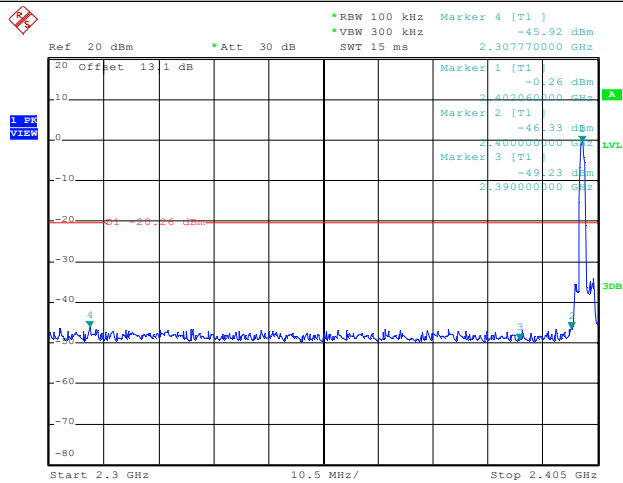
Date: 18.JUN.2019 12:18:29

2DH5_Ant1_High_Hop_2480



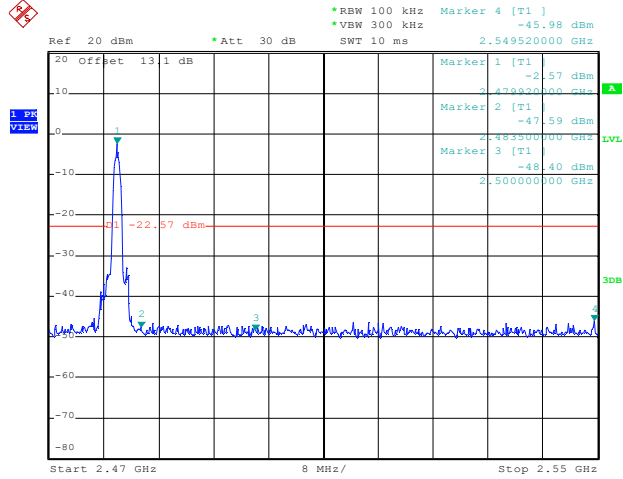
Date: 18.JUN.2019 12:23:50

3DH5_Ant1_Low_2402



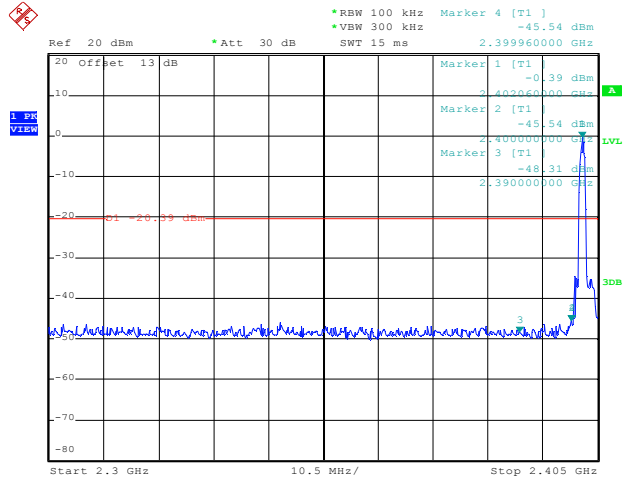
Date: 18.JUN.2019 11:52:56

3DH5_Ant1_High_2480



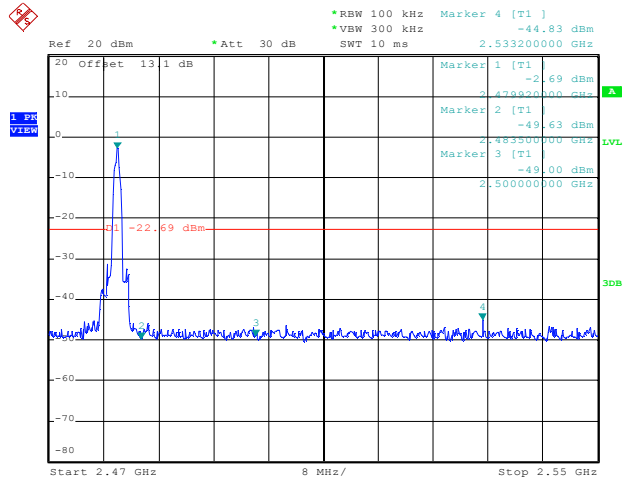
Date: 18.JUN.2019 11:59:46

3DH5_Ant1_Low_Hop_2402



Date: 18.JUN.2019 12:25:04

3DH5_Ant1_High_Hop_2480



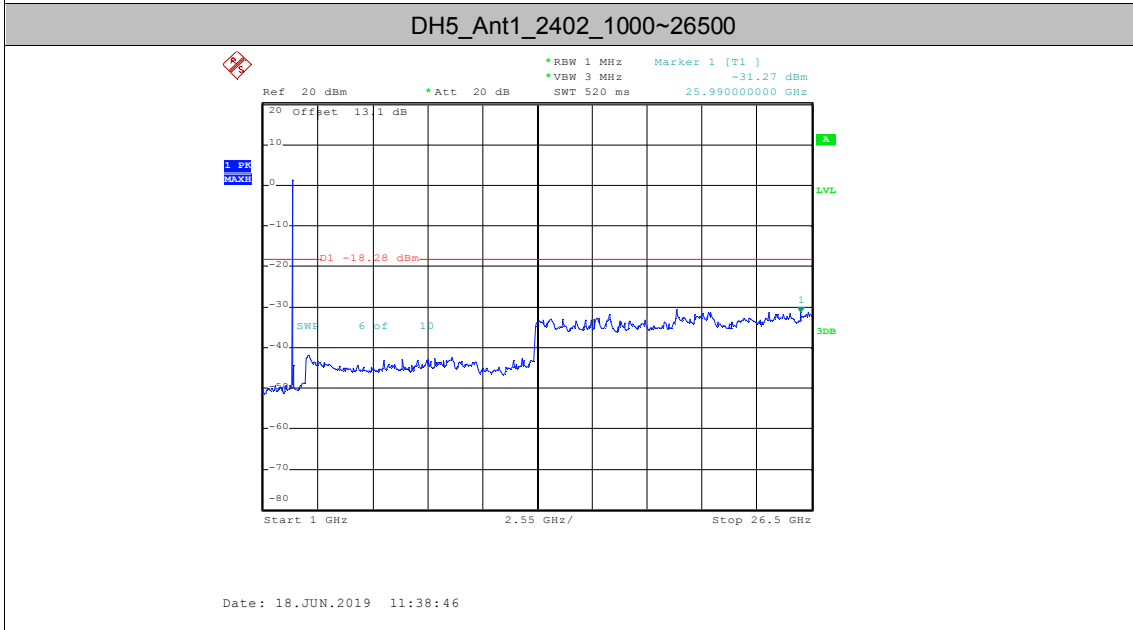
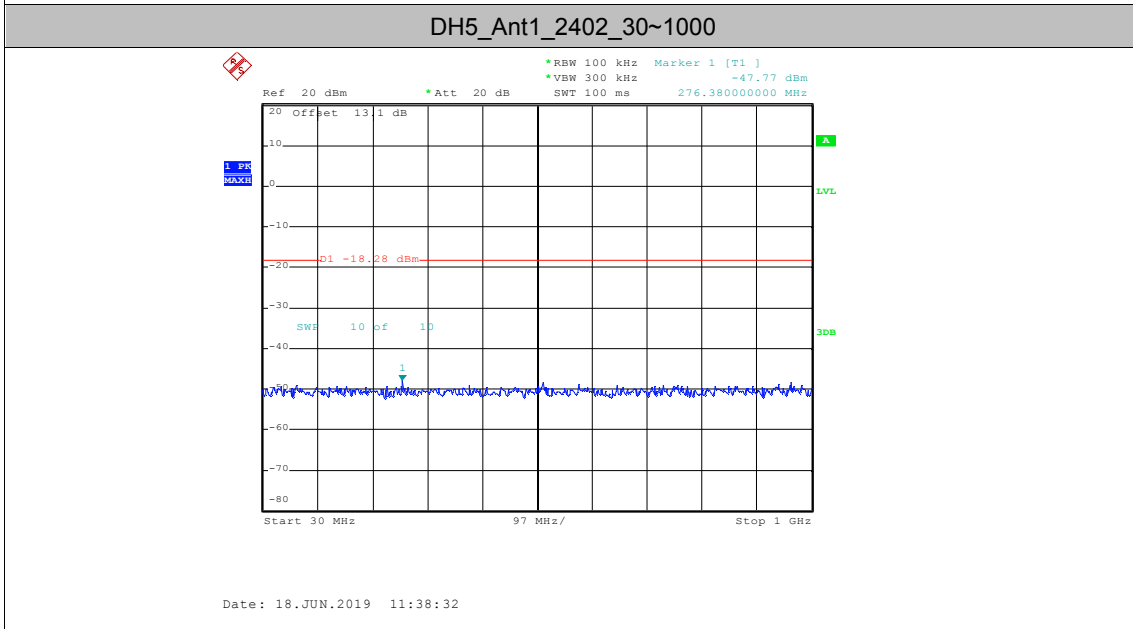
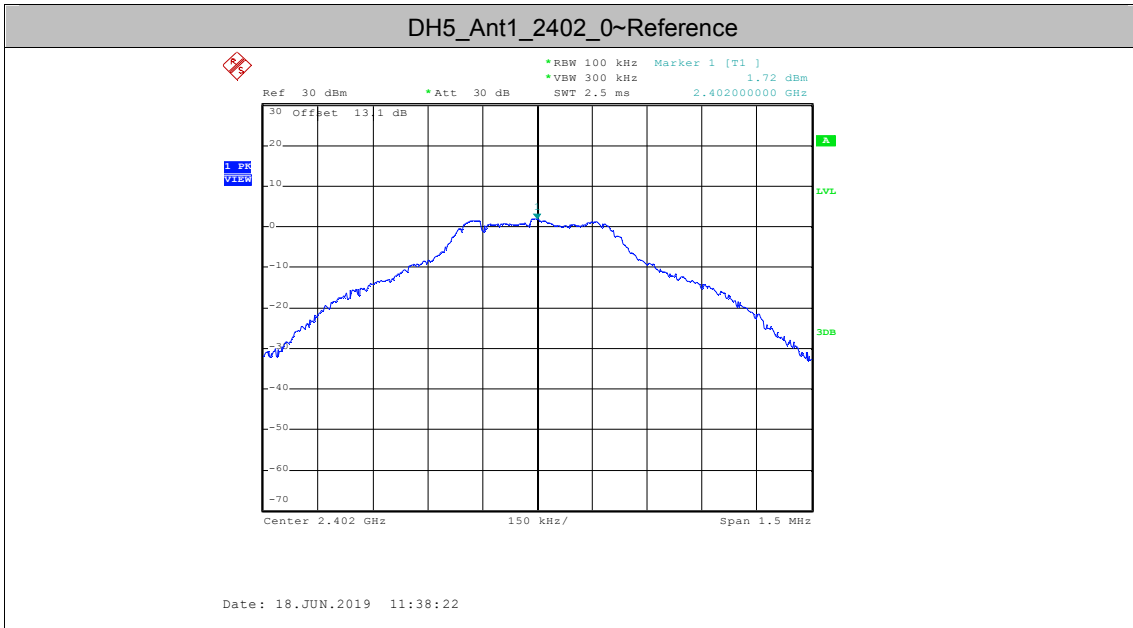
Date: 18.JUN.2019 12:31:10

AppendixH:ConductedSpuriousEmission

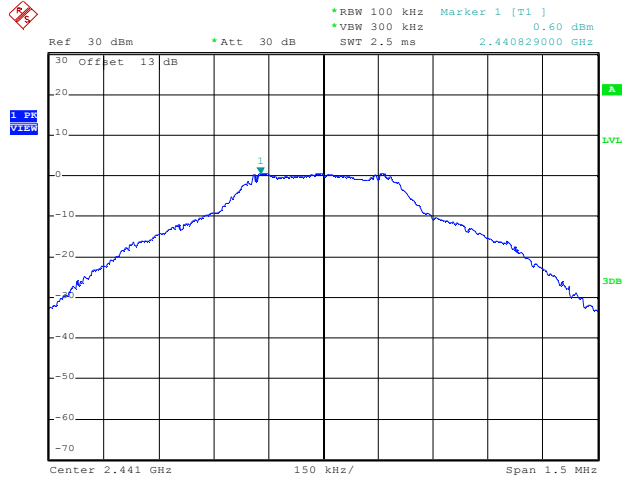
Test Result

TestMode	Antenna	Channel	FreqRange	RefLevel	Result	Limit	Verdict
DH5	Ant1	2402	Reference	1.72	1.72	---	PASS
			30~1000	30~1000	-47.77	<=-18.28	PASS
			1000~26500	1000~26500	-31.27	<=-18.28	PASS
		2441	Reference	0.60	0.60	---	PASS
			30~1000	30~1000	-47.19	<=-19.4	PASS
			1000~26500	1000~26500	-30.81	<=-19.4	PASS
		2480	Reference	-1.14	-1.14	---	PASS
			30~1000	30~1000	-47.57	<=-21.14	PASS
			1000~26500	1000~26500	-30.7	<=-21.14	PASS
2DH5	Ant1	2402	Reference	-0.27	-0.27	---	PASS
			30~1000	30~1000	-47.72	<=-20.27	PASS
			1000~26500	1000~26500	-30.82	<=-20.27	PASS
		2441	Reference	-0.81	-0.81	---	PASS
			30~1000	30~1000	-47.9	<=-20.81	PASS
			1000~26500	1000~26500	-31.13	<=-20.81	PASS
		2480	Reference	-2.67	-2.67	---	PASS
			30~1000	30~1000	-47.84	<=-22.67	PASS
			1000~26500	1000~26500	-30.93	<=-22.67	PASS
3DH5	Ant1	2402	Reference	-0.28	-0.28	---	PASS
			30~1000	30~1000	-48.04	<=-20.28	PASS
			1000~26500	1000~26500	-31	<=-20.28	PASS
		2441	Reference	-0.83	-0.83	---	PASS
			30~1000	30~1000	-47.93	<=-20.83	PASS
			1000~26500	1000~26500	-31.48	<=-20.83	PASS
		2480	Reference	-2.60	-2.60	---	PASS
			30~1000	30~1000	-47.49	<=-22.6	PASS
			1000~26500	1000~26500	-30.1	<=-22.6	PASS

Test Graphs

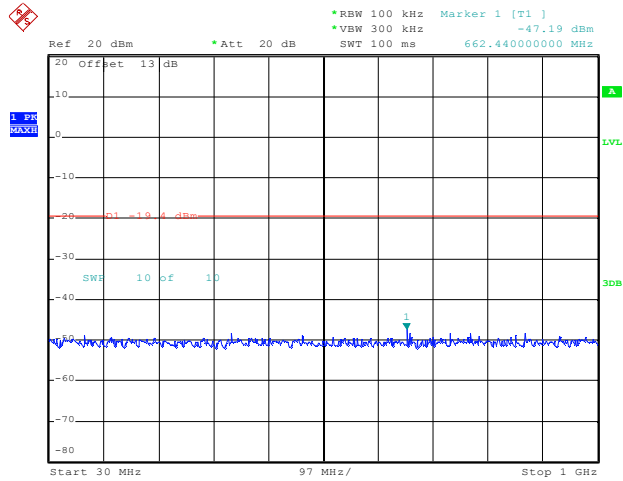


DH5_Ant1_2441_0~Reference



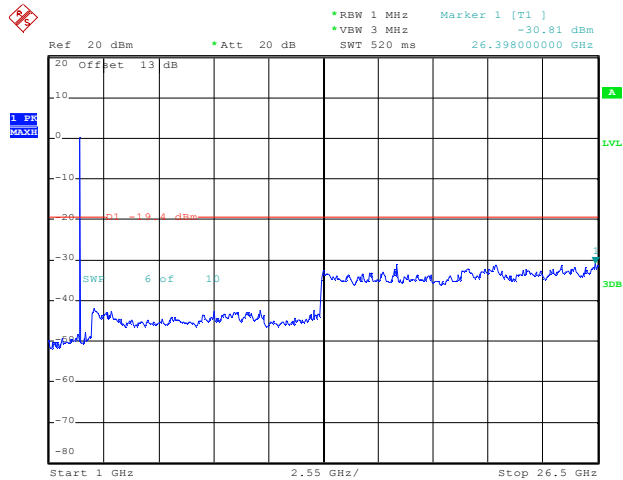
Date: 18.JUN.2019 11:40:33

DH5_Ant1_2441_30~1000



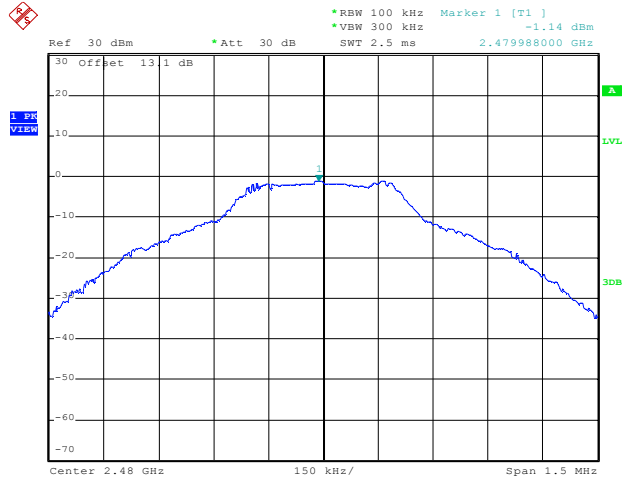
Date: 18.JUN.2019 11:40:43

DH5_Ant1_2441_1000~26500



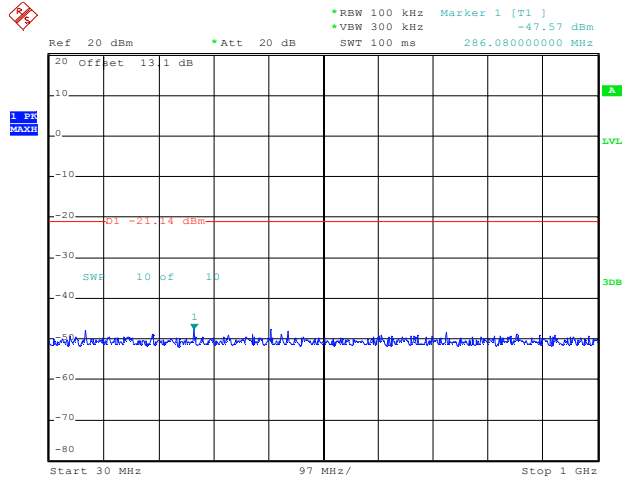
Date: 18.JUN.2019 11:40:57

DH5_Ant1_2480_0~Reference



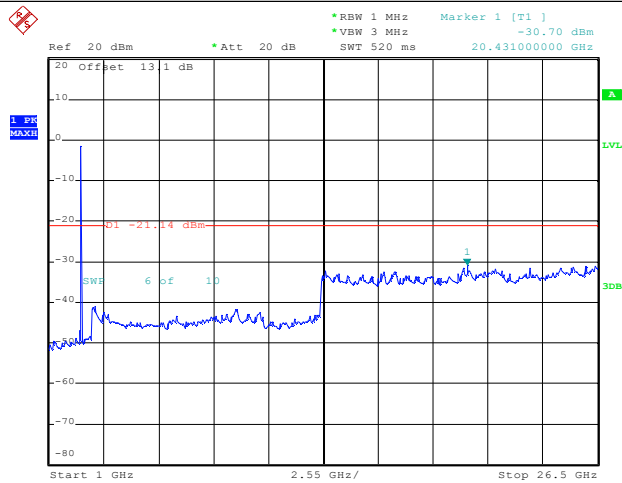
Date: 18.JUN.2019 11:43:14

DH5_Ant1_2480_30~1000



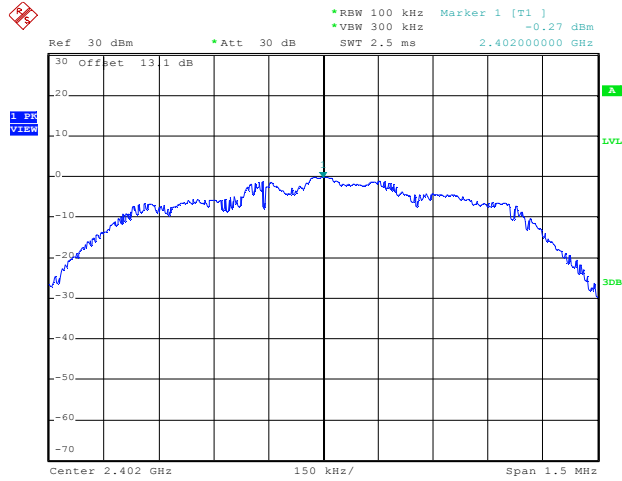
Date: 18.JUN.2019 11:43:23

DH5_Ant1_2480_1000~26500



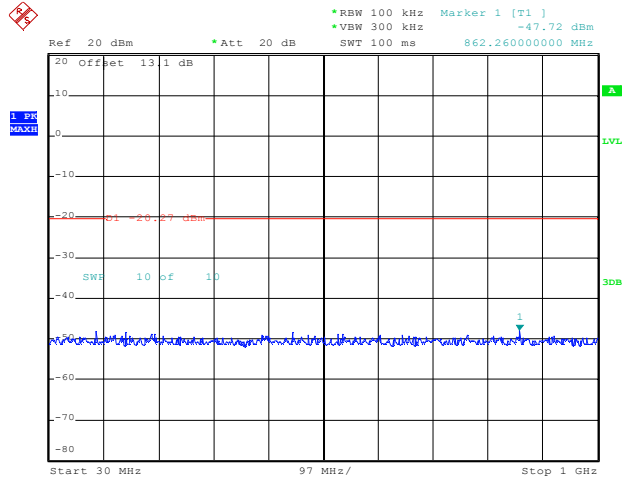
Date: 18.JUN.2019 11:43:38

2DH5_Ant1_2402_0~Reference



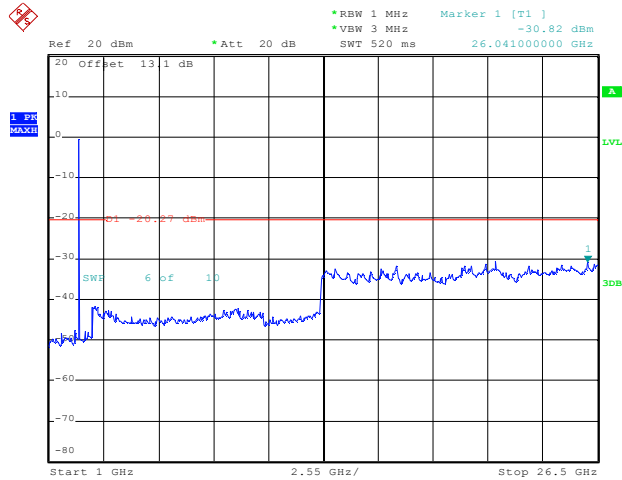
Date: 18.JUN.2019 11:46:27

2DH5_Ant1_2402_30~1000



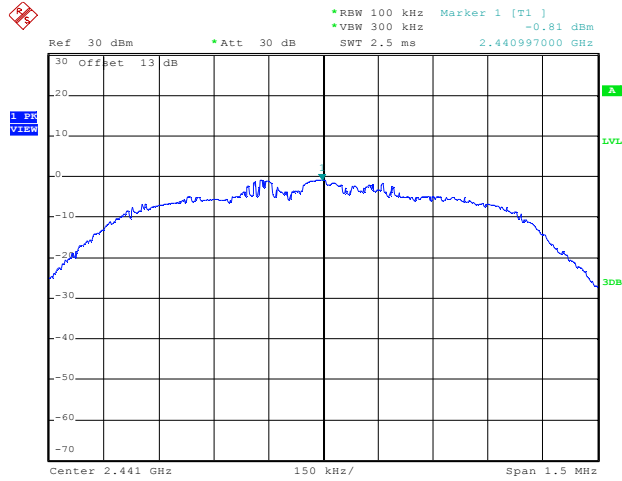
Date: 18.JUN.2019 11:46:37

2DH5_Ant1_2402_1000~26500



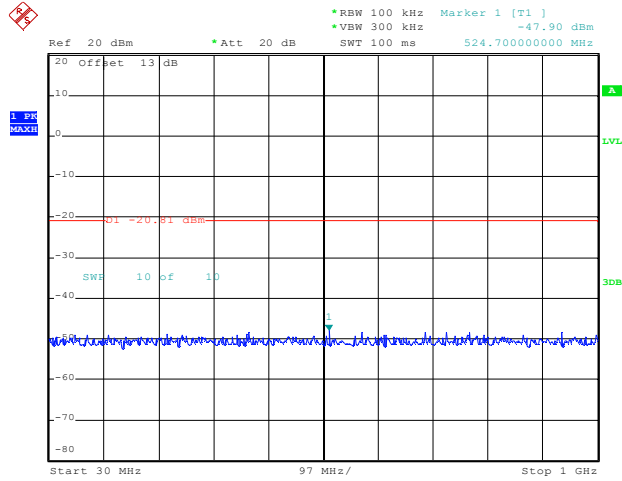
Date: 18.JUN.2019 11:46:51

2DH5_Ant1_2441_0~Reference



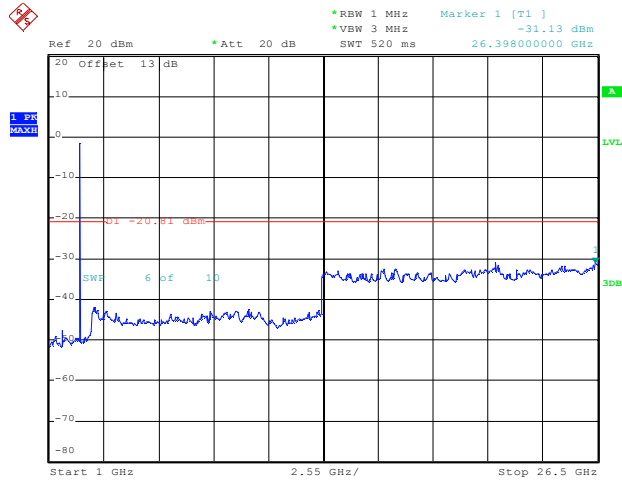
Date: 18.JUN.2019 11:48:39

2DH5_Ant1_2441_30~1000



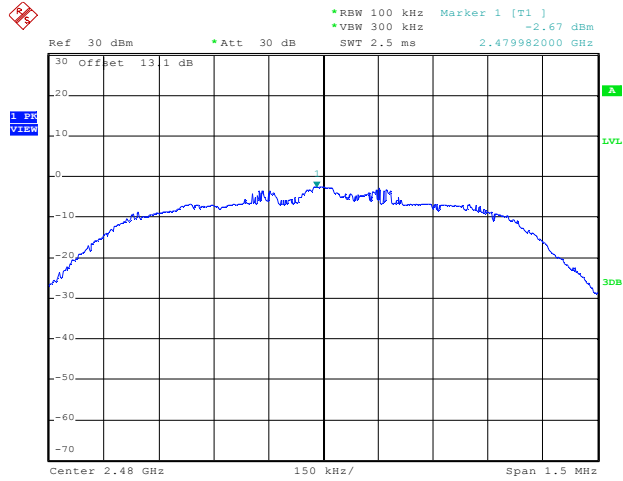
Date: 18.JUN.2019 11:48:49

2DH5_Ant1_2441_1000~26500



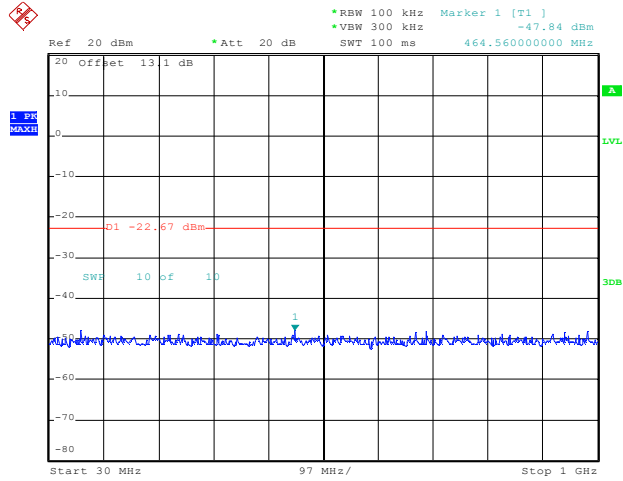
Date: 18.JUN.2019 11:49:03

2DH5_Ant1_2480_0~Reference



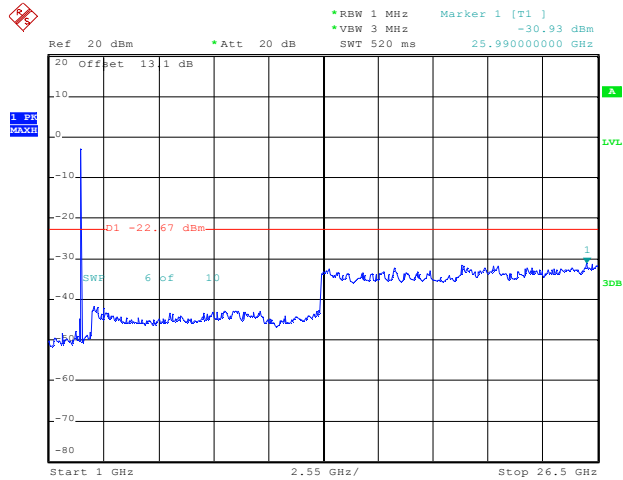
Date: 18.JUN.2019 11:51:19

2DH5_Ant1_2480_30~1000



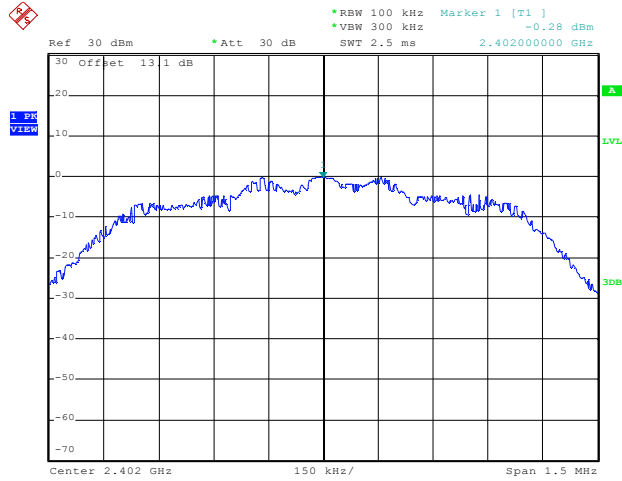
Date: 18.JUN.2019 11:51:29

2DH5_Ant1_2480_1000~26500



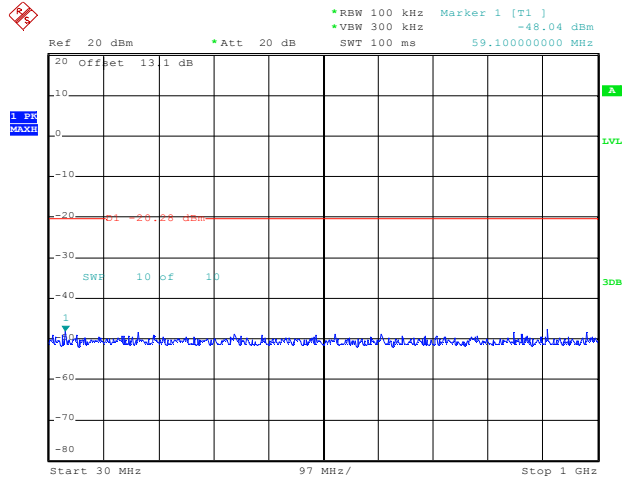
Date: 18.JUN.2019 11:51:44

3DH5_Ant1_2402_0~Reference



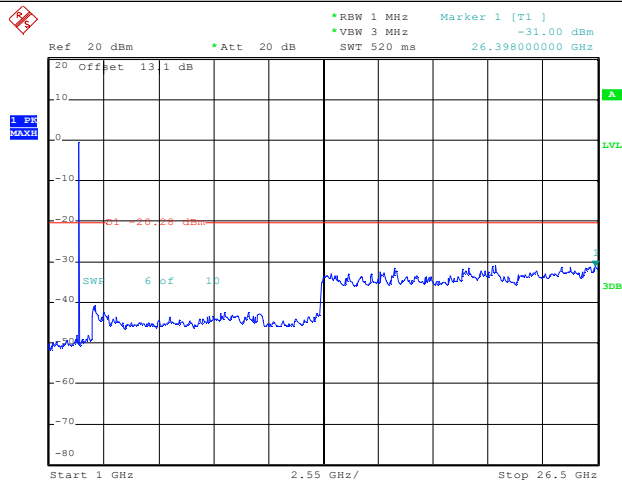
Date: 18.JUN.2019 11:54:01

3DH5_Ant1_2402_30~1000



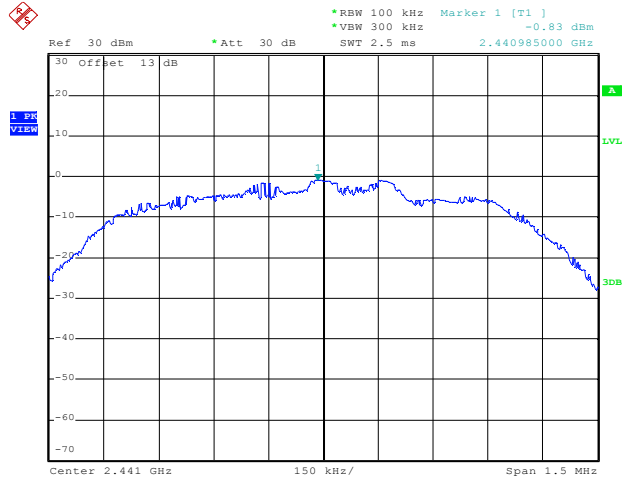
Date: 18.JUN.2019 11:54:11

3DH5_Ant1_2402_1000~26500



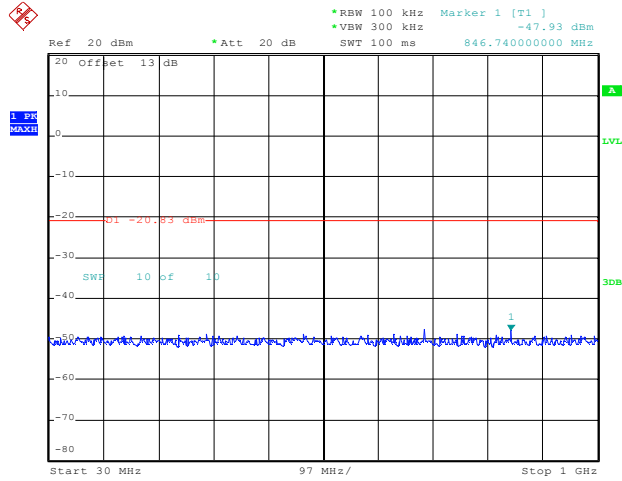
Date: 18.JUN.2019 11:54:26

3DH5_Ant1_2441_0~Reference



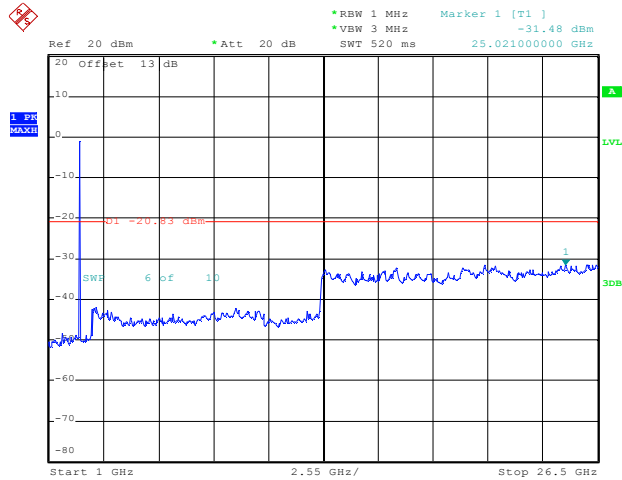
Date: 18.JUN.2019 11:56:14

3DH5_Ant1_2441_30~1000



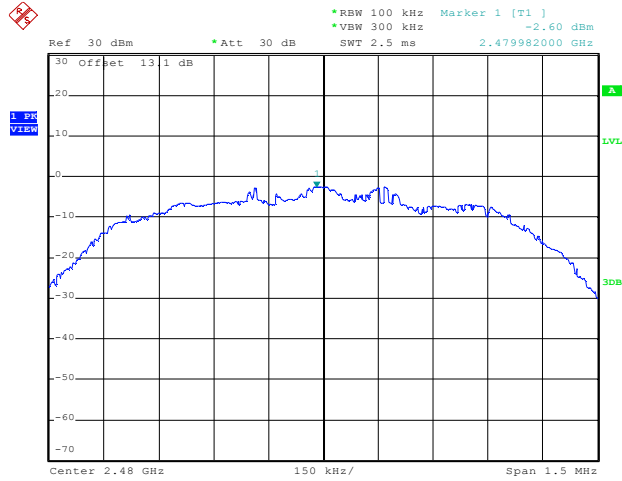
Date: 18.JUN.2019 11:56:24

3DH5_Ant1_2441_1000~26500



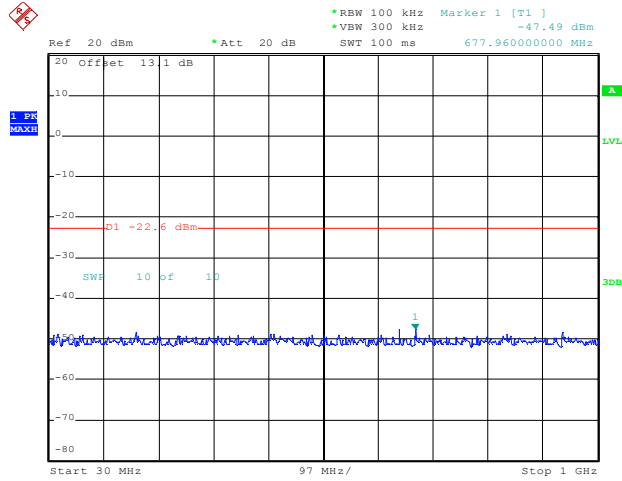
Date: 18.JUN.2019 11:56:39

3DH5_Ant1_2480_0~Reference



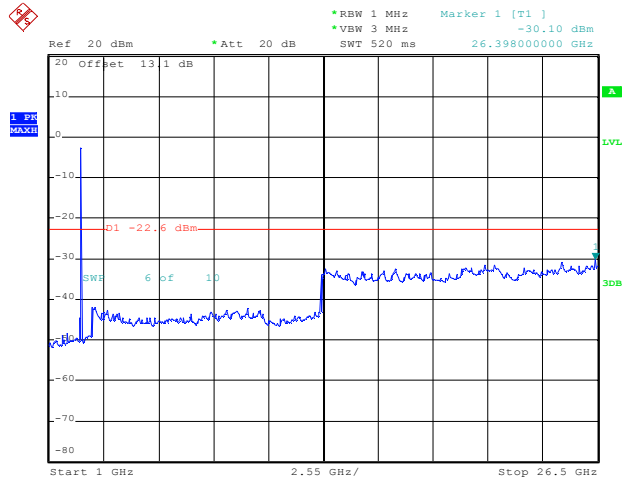
Date: 18.JUN.2019 12:00:53

3DH5_Ant1_2480_30~1000



Date: 18.JUN.2019 12:01:03

3DH5_Ant1_2480_1000~26500

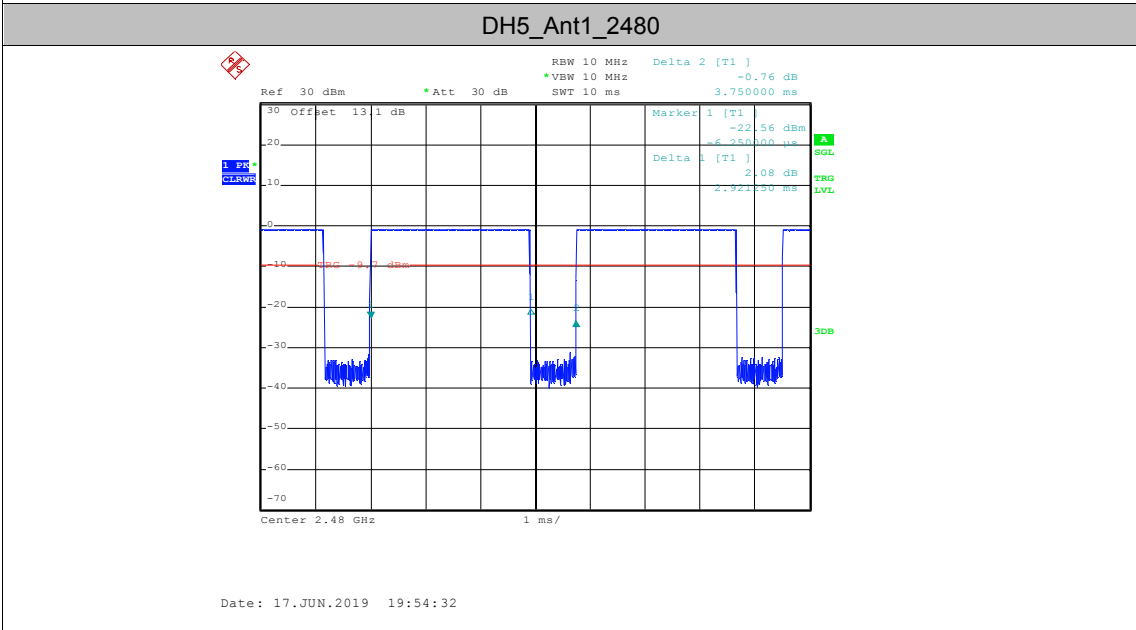
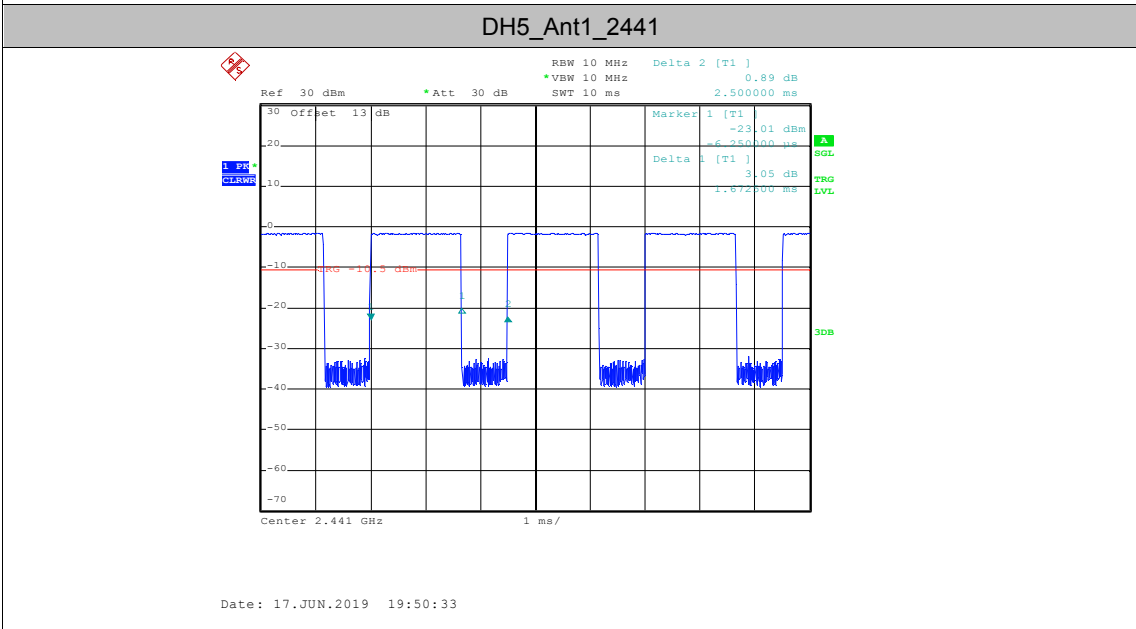
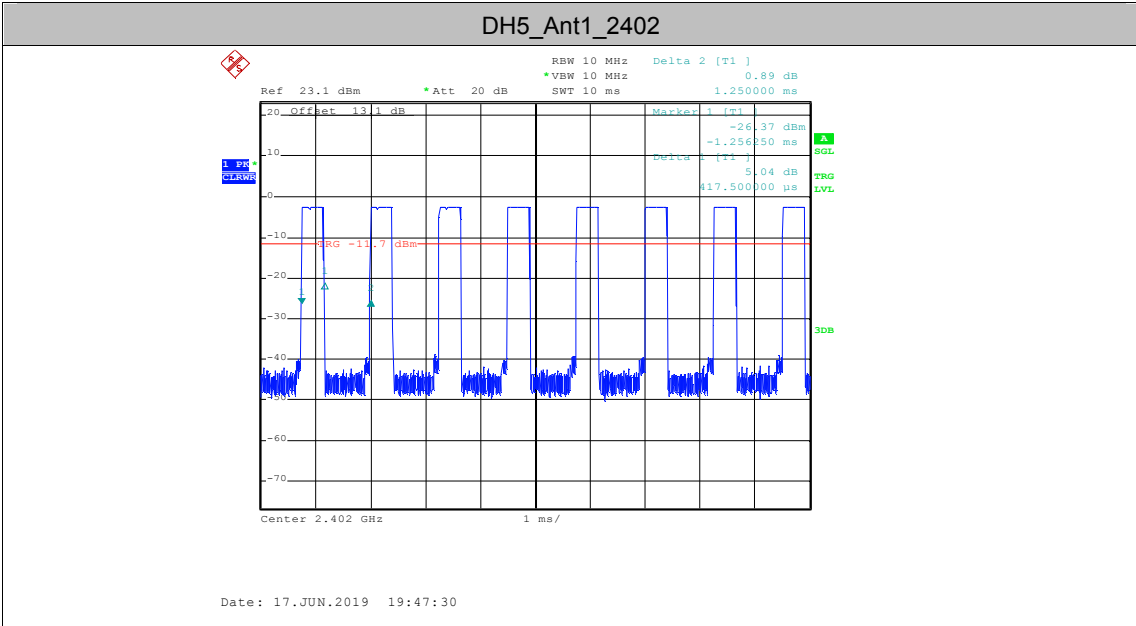


Date: 18.JUN.2019 12:01:17

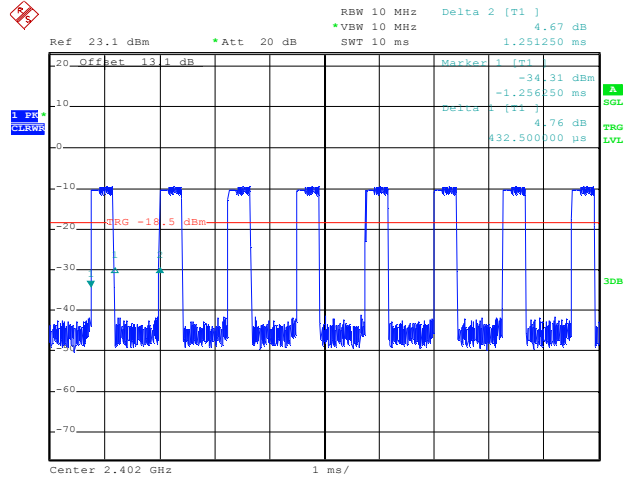
AppendixI: DutyCycle**Test Result**

TestMode	Antenna	Channel	TransmissionDuration [ms]	Transmission Period [ms]	Duty Cycle [%]
DH5	Ant1	2402	0.42	1.25	33.40
		2441	1.67	2.50	66.90
		2480	2.92	3.75	77.90
2DH5	Ant1	2402	0.43	1.25	34.57
		2441	1.68	2.50	67.30
		2480	2.93	3.75	78.13
3DH5	Ant1	2402	0.43	1.25	34.50
		2441	1.68	2.50	67.20
		2480	2.93	3.75	78.17

Test Graphs

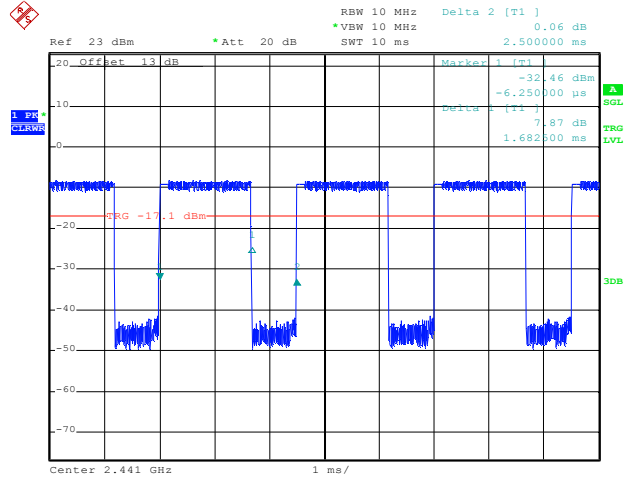


2DH5_Ant1_2402



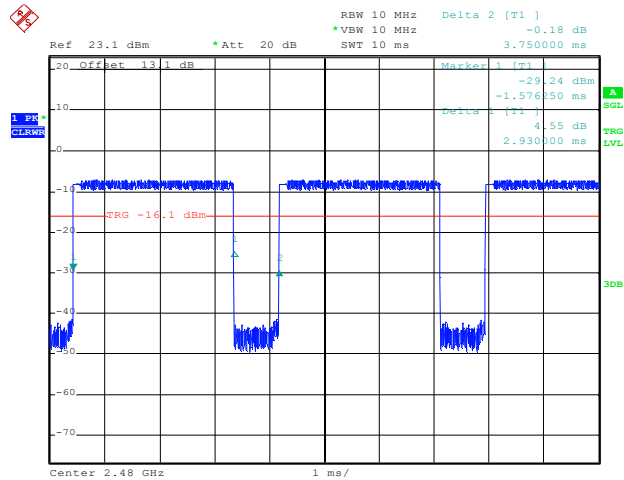
Date: 17.JUN.2019 20:07:37

2DH5_Ant1_2441



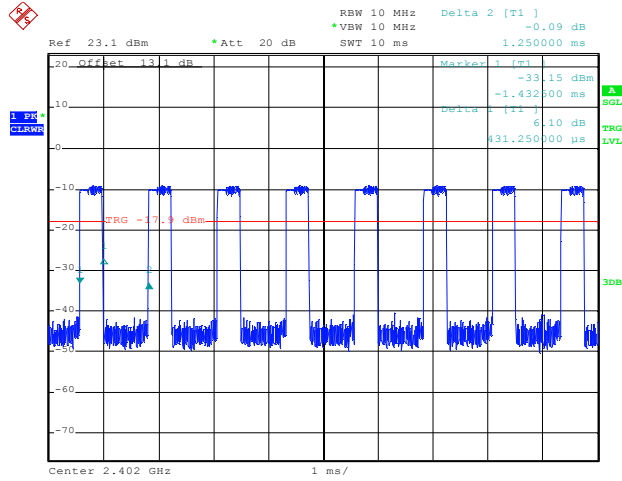
Date: 17.JUN.2019 20:09:23

2DH5_Ant1_2480



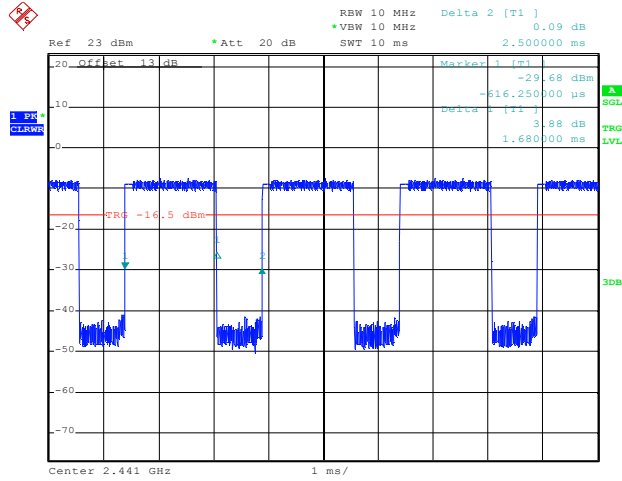
Date: 17.JUN.2019 20:11:15

3DH5_Ant1_2402



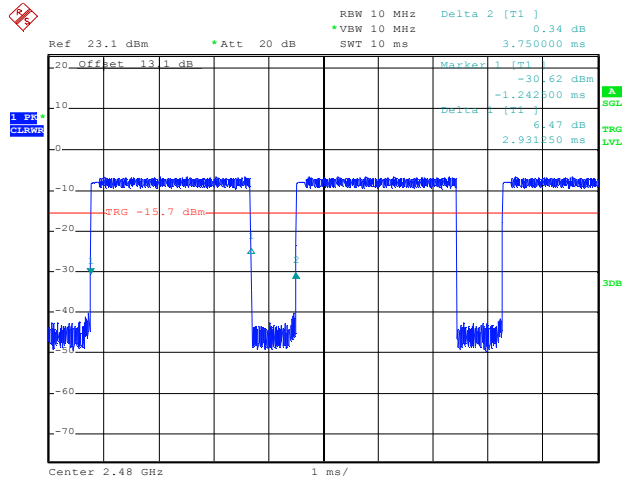
Date: 17.JUN.2019 20:12:42

3DH5_Ant1_2441



Date: 17.JUN.2019 20:13:50

3DH5_Ant1_2480



Date: 17.JUN.2019 20:17:24