

# Yealink

Certified for

Microsoft Teams

## BH72

### Bluetooth Headset

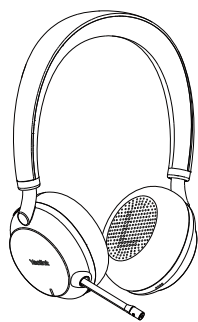


English / 简体中文

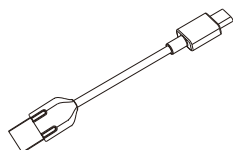
## Quick Start Guide

### V1.0

# 1 Package List



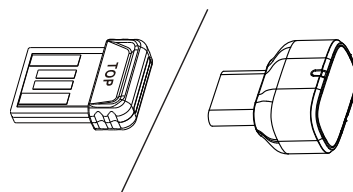
BH72



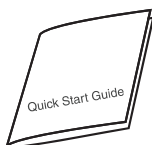
USB 2.0 Cable  
(USB-A to USB-C)



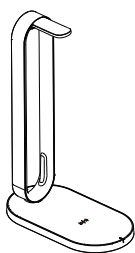
Zipper Bag



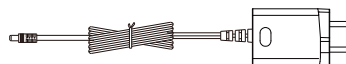
BT51-A (BT51-C)  
Dongle



Quick Start Guide



BHC76 Wireless  
Charging Stand

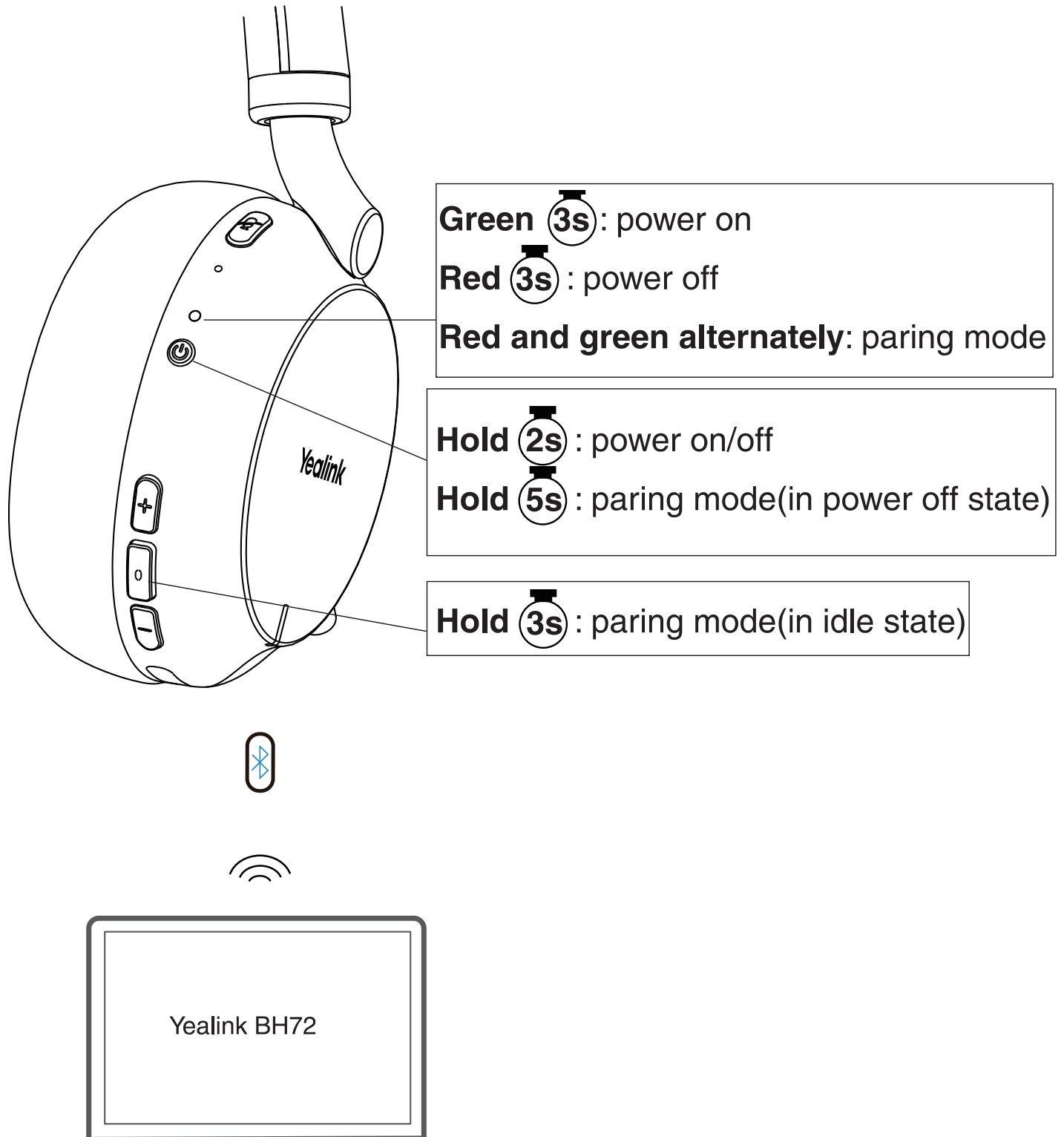


Power Adapter

Optional

**Note:** We recommend that you use the included accessories, and other accessories may have compatibility issues that prevent them from working properly.

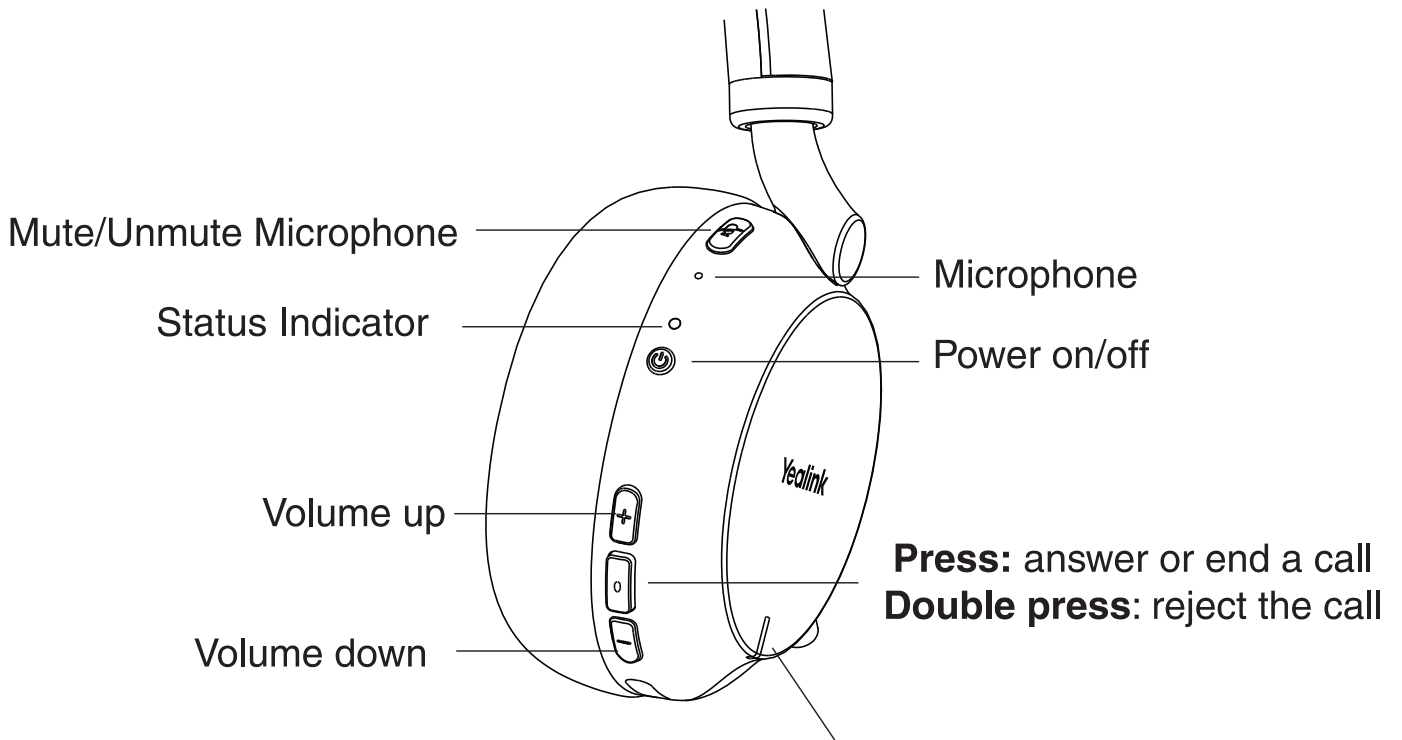
## 2 Power on/off and Paring



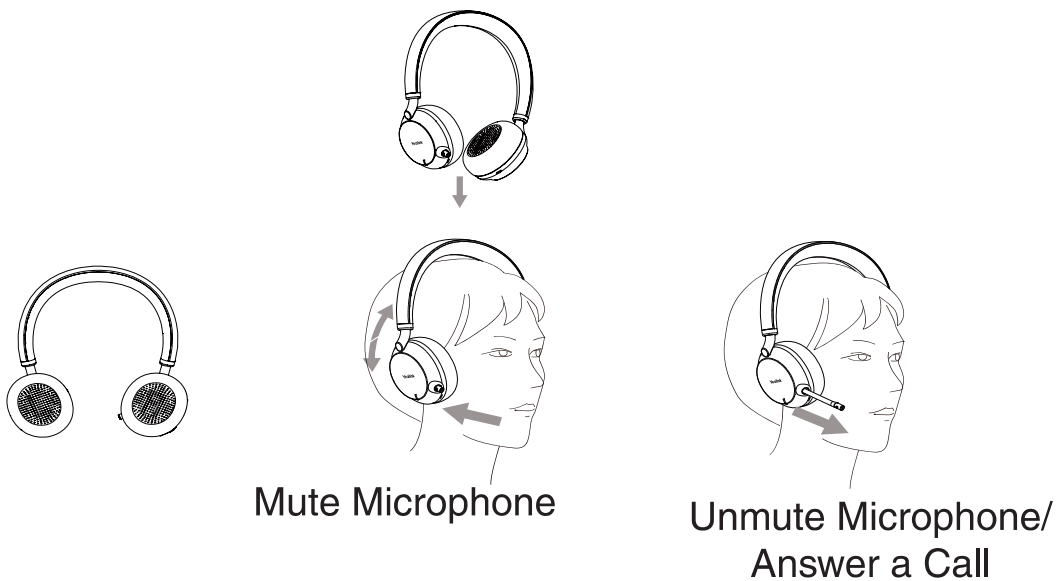
When the headset enters pairing mode, turn on the Bluetooth feature on your device and select Yealink BH72 from the device list to connect to the headset.

Note: If your desk phone/PC does not has built-in Bluetooth, you need to use the BT dongle.

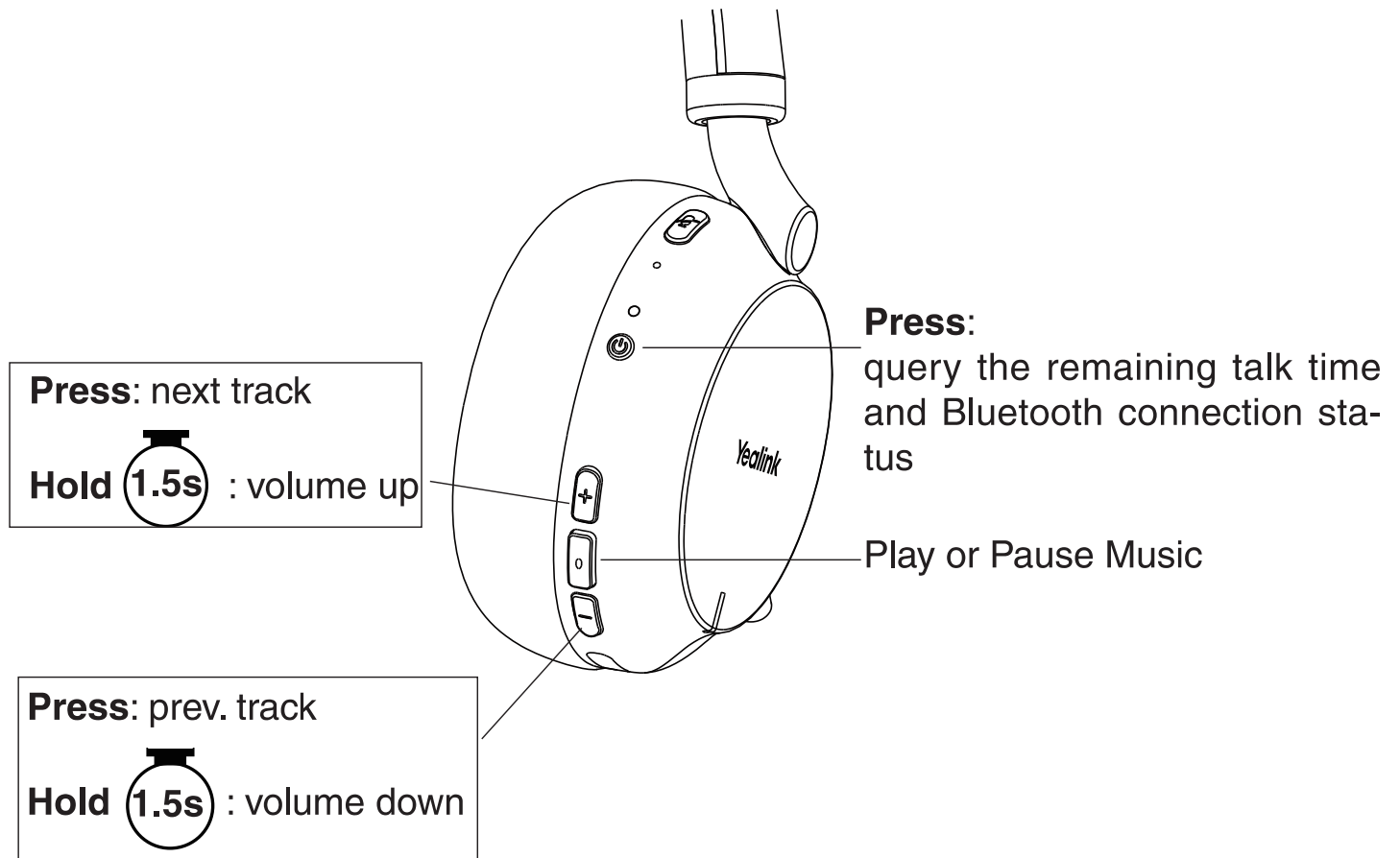
# 3 Call Control



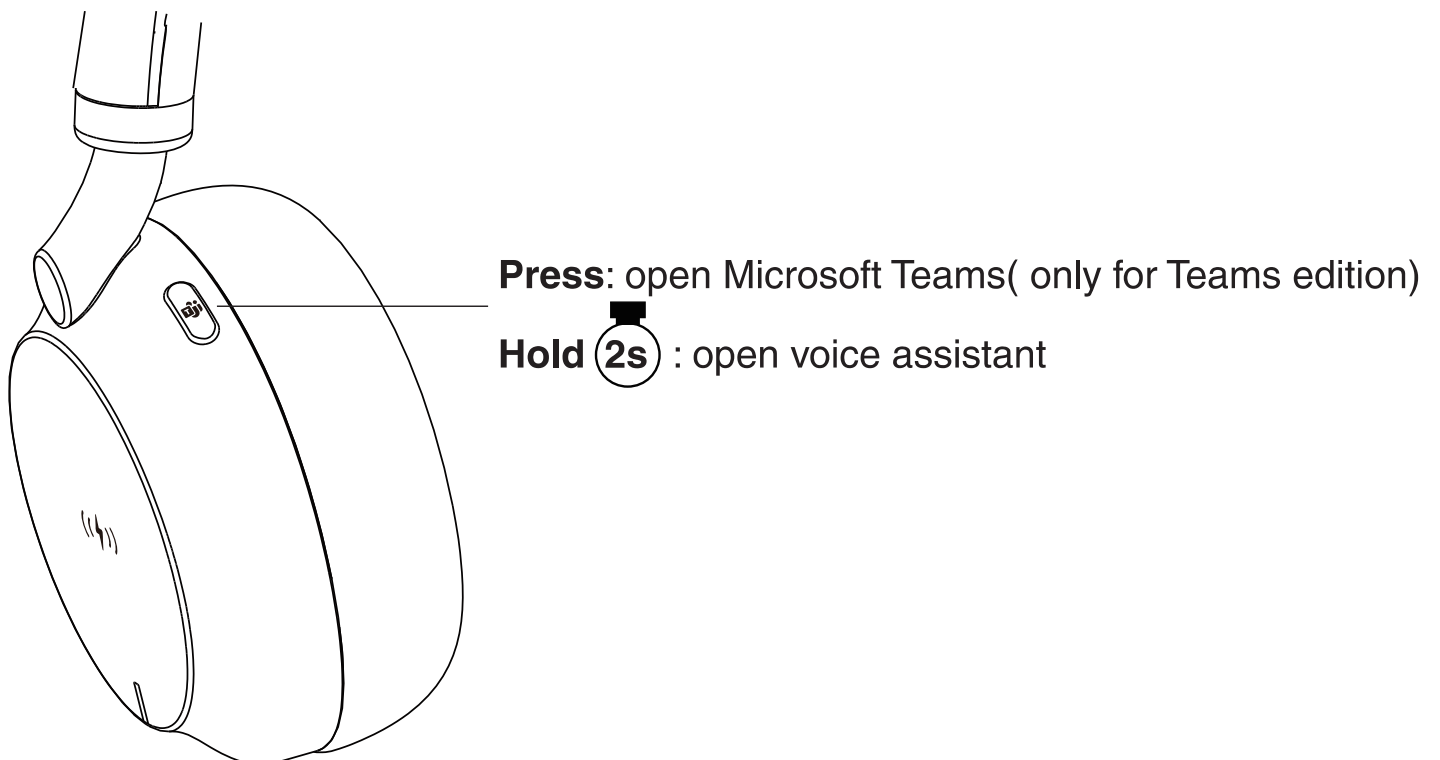
Busylight:  
**Flashing red:** receive an incoming call  
**Solid red:** In a call  
**Flashing purple:** try to connect with Teams(for Teams Edition)  
**Solid purple:** connect to Teams(for Teams Edition)



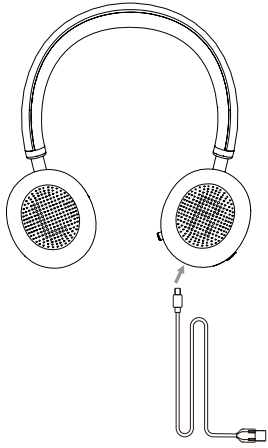
## 4 Music Control



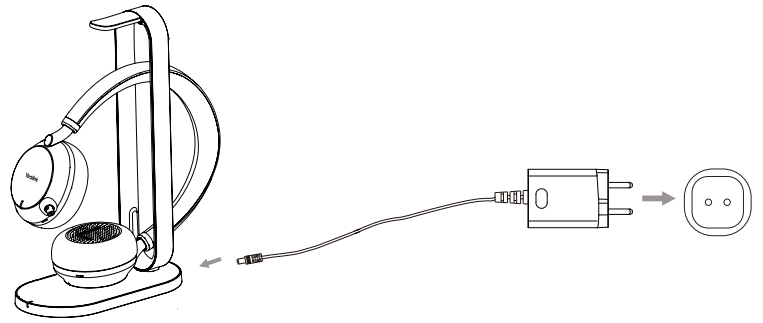
## 5 Customers Key



## 6 Charging



USB Charging

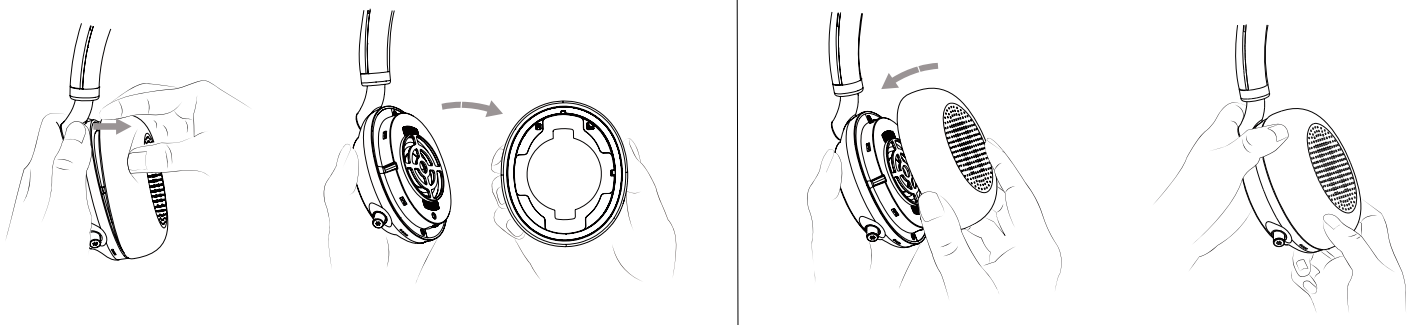


Wireless Charging (optional)

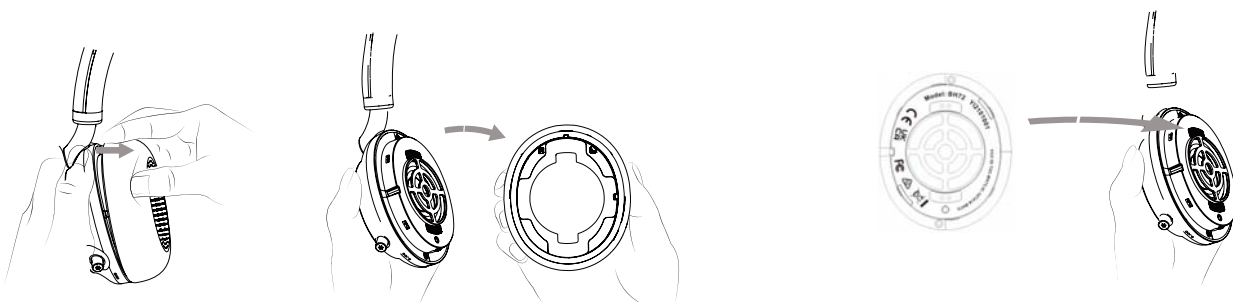
Note:

- Please align the «⚡» on the headset with the «⚡» on the wireless charging stand if you use BHC76 to charge.
- When the status indicator is solid red, the headset is charging, when the it is solid green that means the heaset is fully charged.

## 7 Replace Ear Cushions

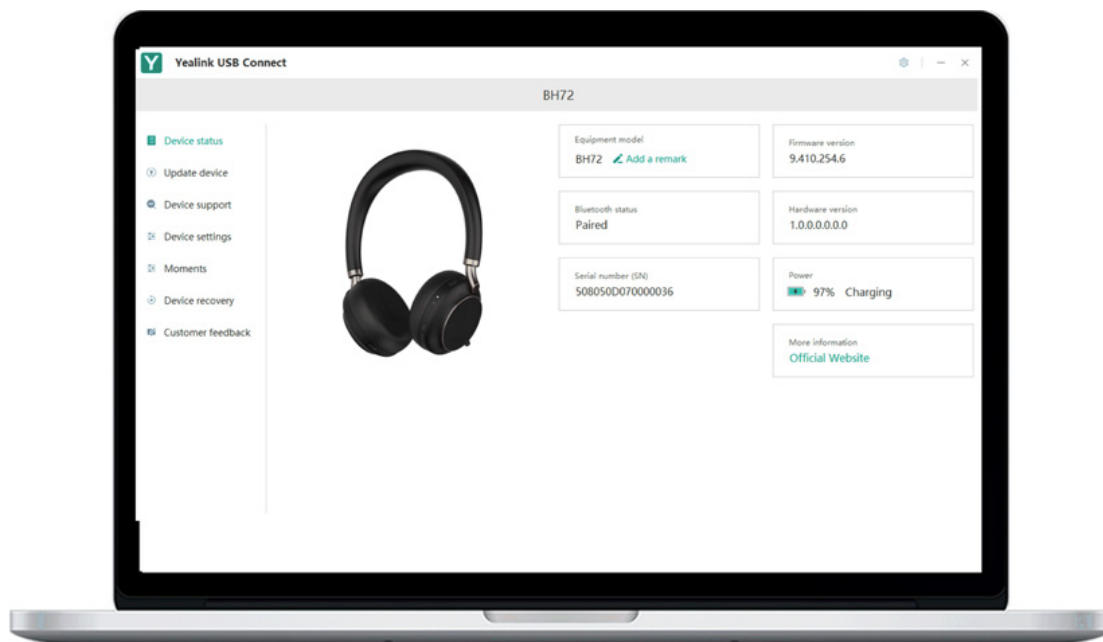


## 8 How to Find Label



# Software Management

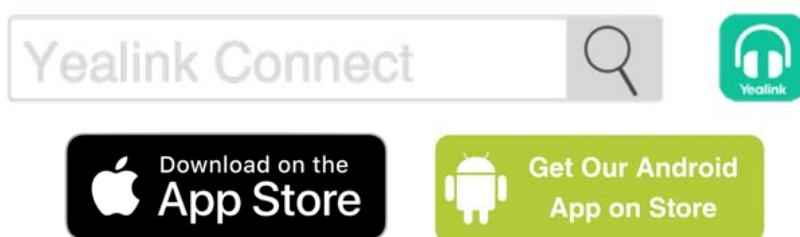
## Yealink USB Connect (PC)



Download it from the Yealink website <https://www.yealink.com/product/yuc>.

**Note:** It needs to be used with Yealink USB Connect of version 0.33.x.x or higher.

## Yealink Connect APP (Mobile)



Download the Yealink Connect from ISO App Store or Android App Store.

# Notes for BHC76 (optional)

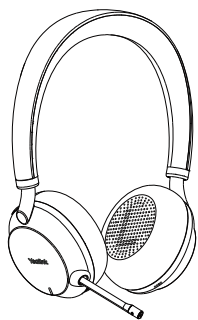
1. In order to get a more efficient charging experience, please use the provided power adapter.
2. Do not put metal debris or magnetic cards on the charging board to avoid abnormalities or damage to the charger.
3. In order to get a more efficient charging experience, please do not charge too far away from the charging iron.
4. If the receiving coil or the transmitting board is overheated and the charging stops (the charging indicator light keeps flashing), please remove the charging product, wait for it to cool down, and try charging again.
5. The indicator light keeps flashing, there are three possible situations:
  - Indicate that the position is not properly placed, and re-place the charging object. After the position is calibrated, until the indicator light is always on, the battery will be charged normally.
  - To ensure a certain degree of safety, the product has an overheating alarm. After the mobile phone or the charging object cools down, it will automatically eliminate the flicker and enter the normal charging state.
  - Put metal debris or magnetic card on the charging board, and remove the metal object or magnetic card.
6. After the device is fully charged, the indicator light will flicker about 15 seconds apart. You can check the charging device to confirm whether it is fully charged.

# Safety Guide for BHC76 (optional)

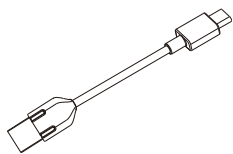
1. Do not disassemble this product by yourself or throw it into fire or water to avoid short circuit leakage or damage to the product.
2. Please do not use this product in high temperature, humidity or corrosive environment, to avoid damage to the circuit and lead to failure to charge or other failures.
3. Do not expose the product to corrosive liquids, otherwise it will cause serious damage.
4. Do not disassemble or modify this product for any reason to avoid secondary failure and burnout.
5. Do not place the product below  $-10^{\circ}\text{C}$  or above  $60^{\circ}\text{C}$ .
6. Do not knock, throw or vibrate this product strongly. Rough methods will damage the internal circuit board structure.



# 1 包装清单



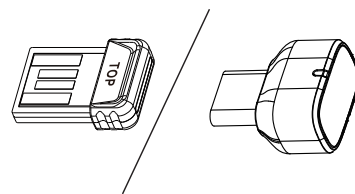
BH72



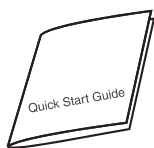
USB 2.0 线  
(USB-A 转 USB-C)



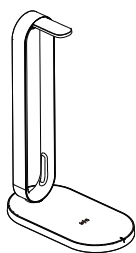
拉链袋



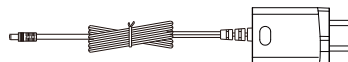
BT51-A (BT51-C)  
Dongle



快速入门指南



无线充电底座

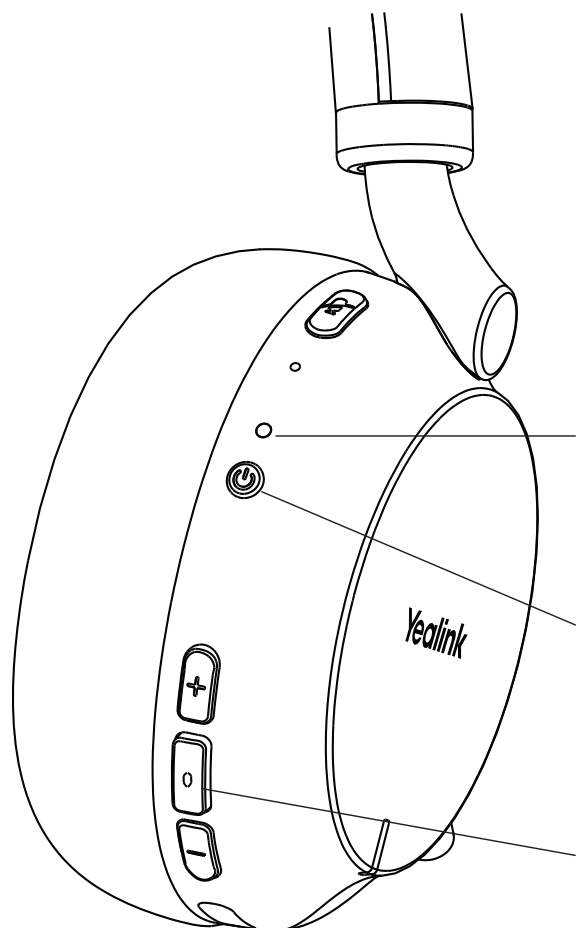


电源适配器

可选

说明：我们推荐使用自带的配件，使用其它配件可能存在兼容问题导致无法正常使用。

## 2 开 / 关机与配对



绿色常亮 3s : 正在开机

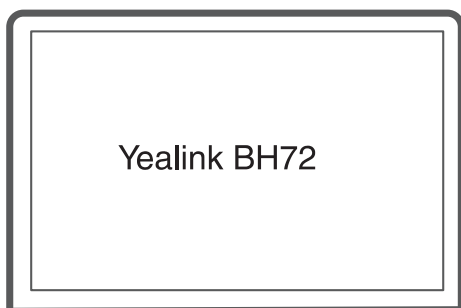
红色常亮 3s : 正在关机

红绿交替闪烁 : 配对状态

长按 2s : 开机 / 关机

长按 5s : 进入配对模式 (关机状态下)

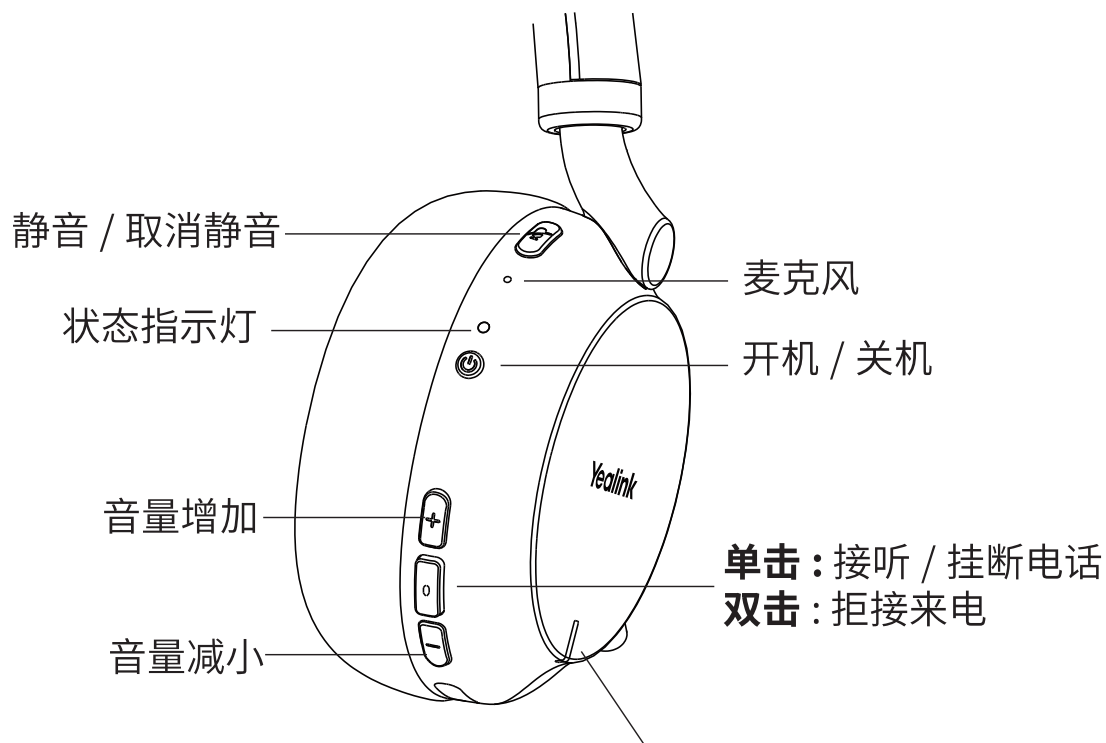
长按 3s : 进入配对模式 (空闲状态)



当耳机进入配对状态时，打开设备上的蓝牙功能，在列表中找到 Yealink BH72 并连接。

说明：如果你的电脑或者话机不具备蓝牙功能，你需要使用 BT dongle.

# 3 通话控制



忙碌指示灯 :

**红色闪烁** : 来电中

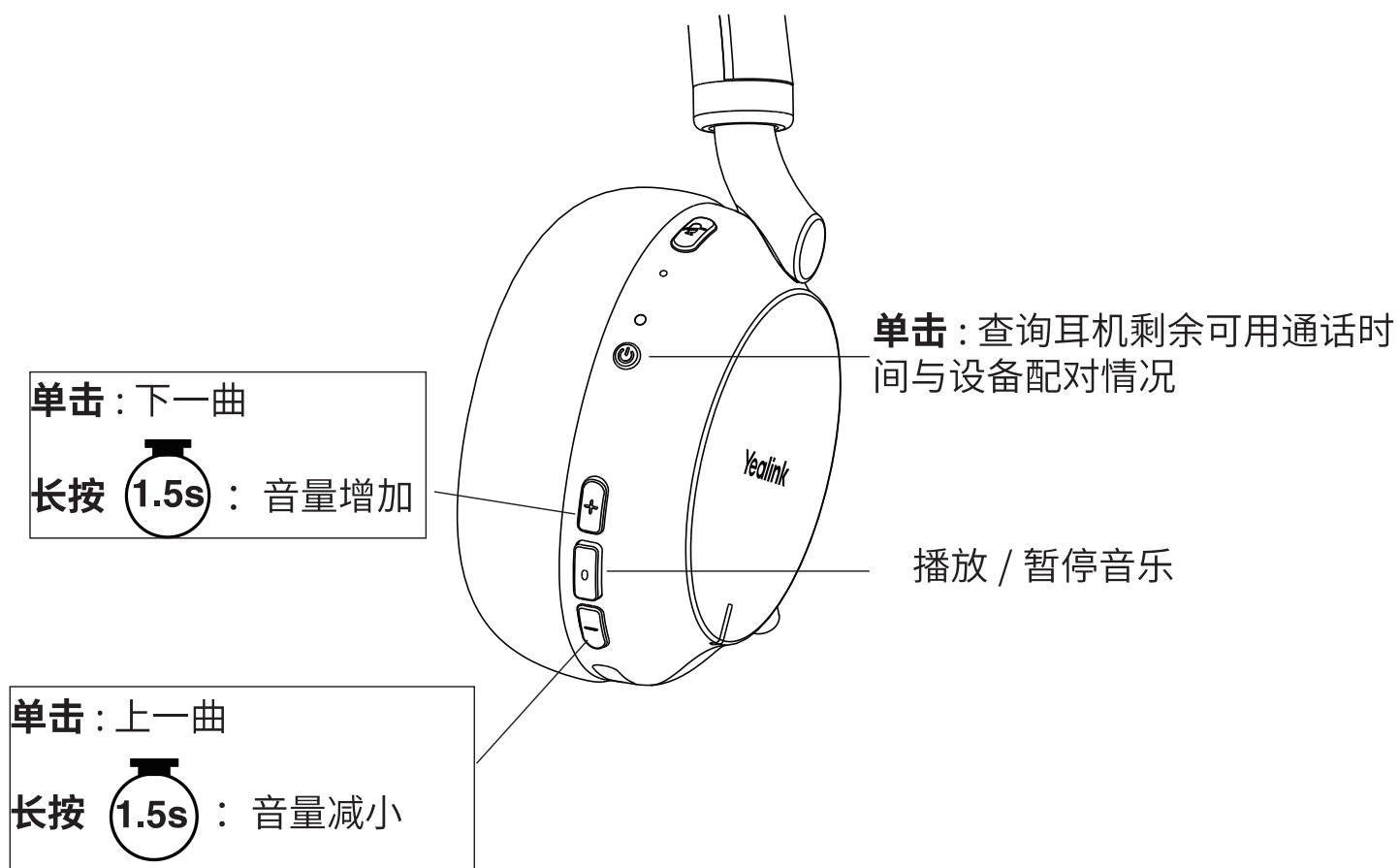
**红色常亮** : 通话中

**紫色闪烁** : 尝试与 Teams 建立联系 ( 只针对 Teams 版本 )

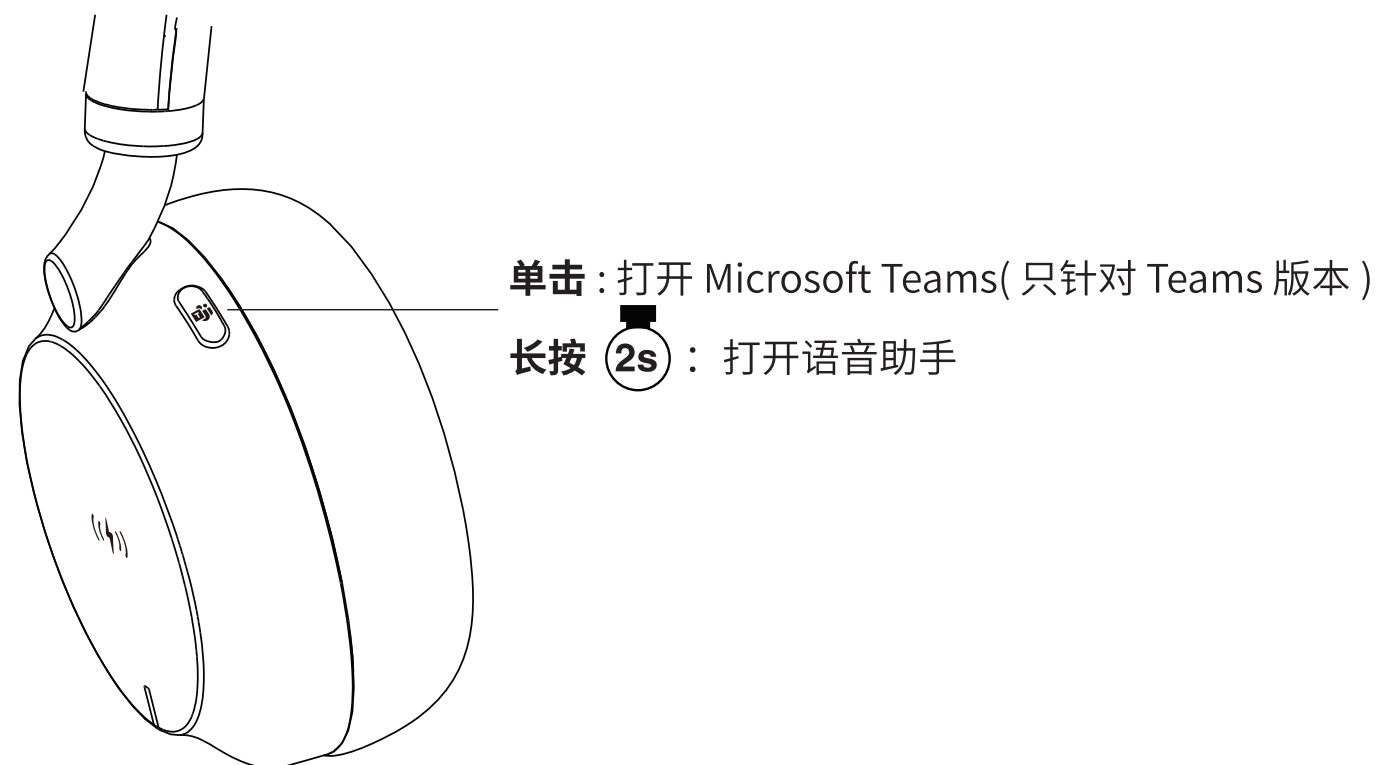
**紫色常亮** : 与 Teams 建立联系 ( 只针对 Teams 版本 )



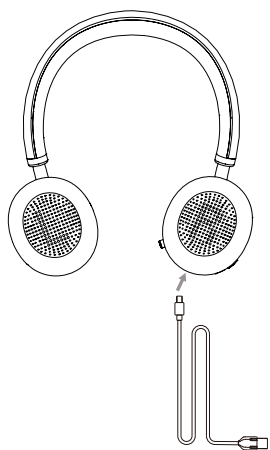
## 4 音乐控制



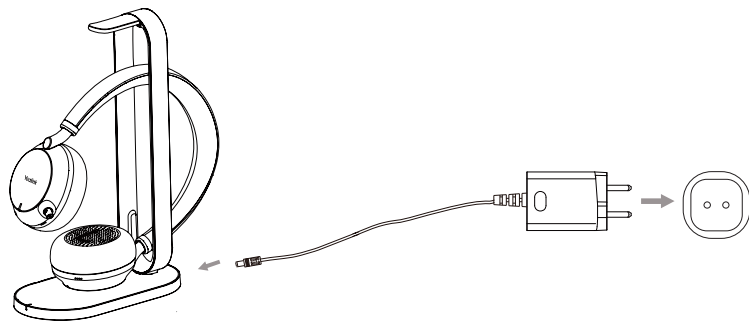
## 5 客户键



## 6 充电



USB 充电

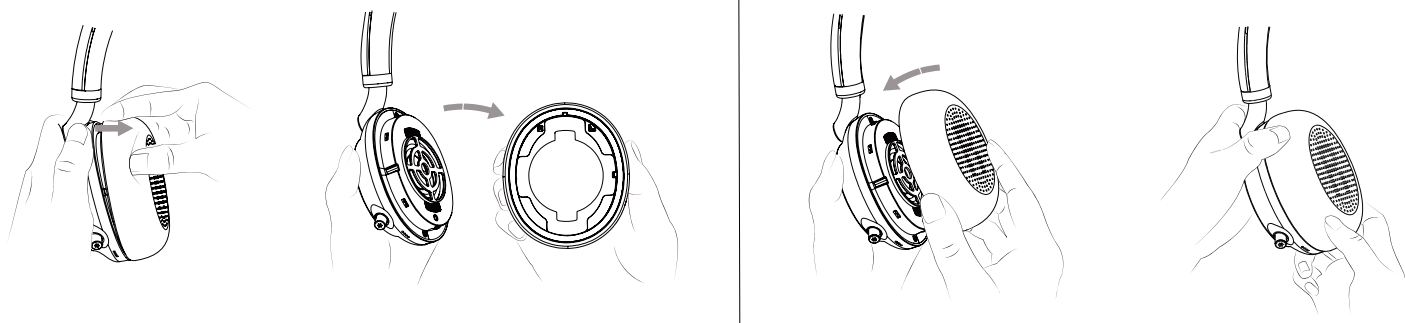


无线充电 (可选)

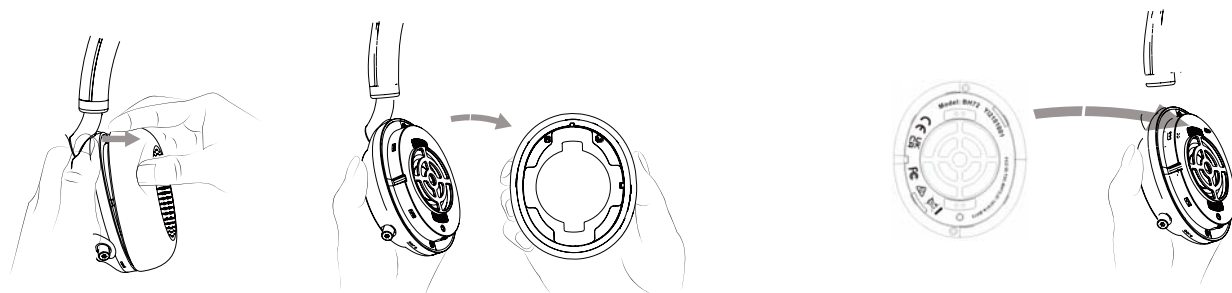
说明:

- 如果你使用无线充电底座充电, 请将耳机上的 (⚡) 图标对准无线充电底座上 (⚡) 的图标。
- 如果状态指示灯为红色, 表明耳机正在充电, 如果为绿色, 表明耳机充满电。

## 7 耳罩更换

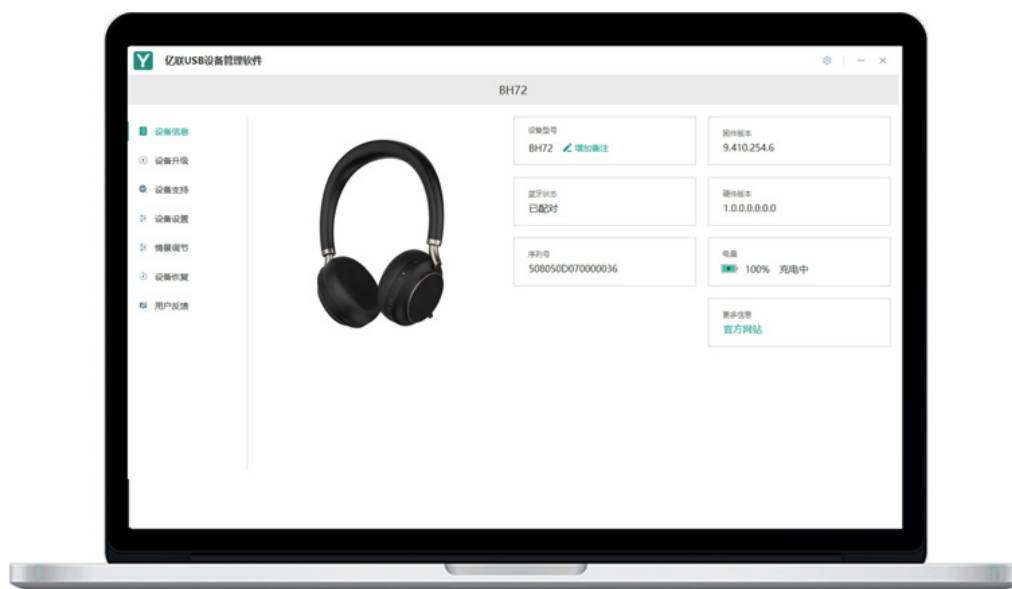


## 8 如何找到标签



# 管理软件

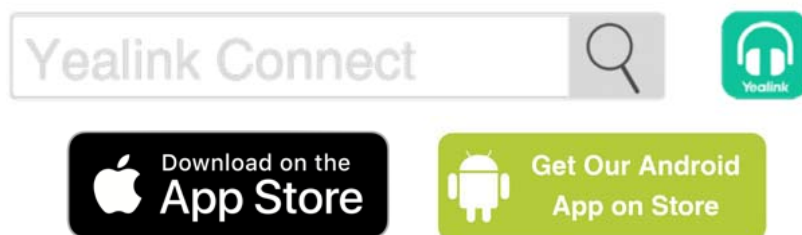
## USB 设备管理软件（电脑端）



请从 <https://www.yealink.com.cn/product/yuc> 下载。

说明：需要配套亿联 USB 设备管理软件 0.33.x.x 或更高版本使用。

## Yealink Connect APP（移动端）



请从手机应用商店搜索下载 Yealink Connect App。

# BHC76 说明

1. 为了让您得到更高效的充电体验，请使用提供的适配器。
2. 请勿在充电板上放金属杂物或磁卡，避免充电器异常或损坏。
3. 为了让您得到更高效的充电体验，请勿远离充电闪电标志充太远。
4. 使用过程中如遇到接收线圈或发射板过热导致停止充电（指示灯一直闪烁），请取下充电产品，待冷却后，重新尝试充电。
5. 指示灯一直闪烁，可能下面三种情况：
  - 位置没放置好，重新放置充电物，校准位置后直到指示灯常亮，正常充电。
  - 保证一定的安全，产品具有过热报警，待手机或充电物自身冷却后，会自动消除闪烁情况，进入正常充电状态。
  - 充电板上放金属杂物或磁卡，需排除取下金属物或磁卡。
6. 设备在充满电后，充电座指示灯状态取决于手机或其它充电物，比如 BH72/BH76 耳机，充满电后，充电座 15S 左右间隔闪烁指示灯亮灭，充满情况建议查看充电设备自身指示。

# BHC76 安全须知

1. 请勿将本产品自行拆卸或投入火中、水中，避免造成短路漏电或损坏产品。
2. 请勿在高温、潮湿或腐蚀性环境下使用本产品，避免损坏电路导致不能充电或其它故障。
3. 请勿将产品接触腐蚀性液体，否则会造成严重损坏。
4. 请勿以任何理由拆卸或改装本产品，避免造成二级故障及烧毁。
5. 请勿将产品置于小于  $-10^{\circ}\text{C}$  或者大于  $60^{\circ}\text{C}$ 。
6. 请勿敲打、扔掷或强烈震动本产品，粗暴方式会损坏内部电路板结构。

## Regulatory Notices


### Operating Ambient Temperatures

- Operating temperature: +32 to 104°F (0 to 40°C)
- Relative humidity: 5% to 90%, noncondensing
- Storage temperature: -22 to +160°F (-30 to +70°C)


### Warranty

Our product warranty is limited only to the unit itself, when used normally in accordance with the operating instructions and the system environment. We are not liable for damage or loss resulting from the use of this product, or for any claim from a third party. We are not liable for problems with Yealink device arising from the use of this product; we are not liable for financial damages, lost profits, claims from third parties, etc., arising from the use of this product.

### Explanation of the symbols

- DC symbol  
 is the DC voltage symbol.

- WEEE Warning symbol

 To avoid the potential effects on the environment and human health as a result of the presence of hazardous substances in electrical and electronic equipment, end users of electrical and electronic equipment should understand the meaning of the crossed-out wheeled bin symbol. Do not dispose of WEEE as unsorted municipal waste and have to collect such WEEE separately.

### Restriction of Hazardous Substances Directive (RoHS)

This device complies with the requirements of the EU RoHS Directive. Statements of compliance can be obtained by contacting [support@yealink.com](mailto:support@yealink.com).

### Safety Instructions

Save these instructions. Read these safety instructions before use!

#### General Requirements

- Before you install and use the device, read the safety instructions carefully and observe the situation during operation.
- During the process of storage, transportation, and operation, please always keep the device dry and clean, avoid collision and crash.
- Please attempt not to dismantle the device by yourself. In case of any discrepancy, please contact the appointed maintenance center for repair.
- Please refer to the relevant laws and statutes while using the device. Legal rights of others should be respected as well.

#### Environmental Requirements

- Place the device at a well-ventilated place. Do not expose the device under direct sunlight.
- Keep the device dry and free of dusts.
- Do not place the device on or near any inflammable or fire-vulnerable object, such as rubber-made materials.
- Keep the device away from any heat source or bare fire, such as a candle or an electric heater.

#### Operating Requirements

- Do not let a child operate the device without guidance.
- Do not let a child play with the device or any accessory in case of accidental swallowing.
- Please use the accessories provided or authorized by the manufacturer only.
- The power supply of the device shall meet the requirements of the input voltage of the device. Please use the provided surge protection power socket only.
- Before plugging or unplugging any cable, make sure that your hands are completely dry.
- Do not spill liquid of any kind on the product or use the equipment near water, for example, near a bathtub, wash-bowl, kitchen sink, wet basement or near a swimming pool.
- During a thunderstorm, stop using the device and disconnect it from the power supply. Unplug the power plug and the Asymmetric Digital Subscriber Line (ADSL) twisted pair (the radio frequency cable) to avoid lightning strike.
- If the device is left unused for a rather long time, disconnect it from the power supply and unplug the power plug.
- When there is smoke emitted from the device, or some abnormal noise or smell, disconnect the device from the power supply, and unplug the power plug immediately.
- Contact the specified maintenance center for repair.
- Do not insert any object into equipment slots that is not part of the product or auxiliary product.
- Before connecting a cable, connect the grounding cable of the device first. Do not disconnect the grounding cable until you disconnect all other cables.

#### Battery Requirements

- Do not immerse the battery into water, which could short-circuit and damage the battery.
- Do not expose the battery to an open flame or leave the battery where it could be subjected to extremely high temperatures, which could cause the battery to explode.



- Do power the handset off before removing the battery.
- Do not try to use the battery for the power supply of any device other than this handset.
- Do not open or mutilate the battery, released electrolyte is corrosive and may cause damage to your eyes or skin.
- Use only the rechargeable battery pack delivered with the handset or those rechargeable battery packs expressly recommended by Yealink.
- Defective or exhausted battery should never be disposed of as municipal waste. Return old battery to the battery supplier, a licensed battery dealer or a designated collection facility.

#### Cleaning Requirements

- Before cleaning the device, disconnect it from the power supply.
- Use a piece of soft, dry and anti-static cloth to clean the device.
- Keep the power plug clean and dry.

#### **Troubleshooting**

The unit cannot supply power to Yealink device.

There is a bad connection with the plug.

1. Clean the plug with a dry cloth.

2. Connect it to another wall outlet.

The usage environment is out of operating temperature range.

1. Use in the operating temperature range.

The cable between the unit and the Yealink device is connected incorrectly.

1. Connect the cable correctly.

You cannot connect the cable properly.

1. You may have connected a wrong Yealink device.

2. Use the correct power supply.

Some dust, etc., may be in the port.

1. Clean the port.

Contact your dealer or authorized service facility for any further questions.

#### **FCC Statement**

This device complies with part 15 of the FCC Rules. Operation is subject to the following two conditions: (1) this device may not cause harmful interference, and (2) this device must accept any interference received, including interference that may cause undesired operation.

Any Changes or modifications not expressly approved by the party responsible for compliance could void the user's authority to operate the equipment.

#### **IMPORTANT NOTE:**

Note: This equipment has been tested and found to comply with the limits for a Class B digital device, pursuant to part 15 of the FCC Rules. These limits are designed to provide reasonable protection against harmful interference in a residential installation. This equipment generates, uses and can radiate radio frequency energy and, if not installed and used in accordance with the instructions, may cause harmful interference to radio communications.

However, there is no guarantee that interference will not occur in a particular installation. If this equipment does cause harmful interference to radio or television reception, which can be determined by turning the equipment off and on, the user is encouraged to try to correct the interference by one or more of the following measures:

—Reorient or relocate the receiving antenna.

—Increase the separation between the equipment and receiver.

—Connect the equipment into an outlet on a circuit different from that to which the receiver is connected.

—Consult the dealer or an experienced radio/TV technician for help.

**IC Statement**

This device complies with Industry Canada's licence-exempt RSSs. Operation is subject to the following two conditions:

- (1) this device may not cause interference; and
- (2) this device must accept any interference, including interference that may cause undesired operation of the device. CAN ICES-3(B)

Le présent appareil est conforme aux CNR d'Industrie Canada applicables aux appareils radio exempts de licence. L'exploitation est autorisée aux deux conditions suivantes :

- (1) l'appareil ne doit pas produire de brouillage;
- (2) l'utilisateur de l'appareil doit accepter tout brouillage radioélectrique subi, même si le brouillage est susceptible d'en compromettre le fonctionnement. NMB-3(B)

**Radiation Exposure Statement**

This equipment complies with FCC and IC radiation exposure limits set forth for an uncontrolled environment.

Cet équipement est conforme aux limites d'exposition aux rayonnements FCC et IC définies pour un environnement non contrôlé.

**Contact Information**

YEALINK (XIAMEN ) NETWORK TECHNOLOGY CO.,LTD.

309, 3rd Floor, No.16, Yun Ding North Road, Huli District, Xiamen City, Fujian, P.R.C

YEALINK (EUROPE) NETWORK TECHNOLOGY B.V.

Strawinskylaan 3127, Atrium Building, 8th floor, 1077ZX Amsterdam, The Netherlands

YEALINK (USA) NETWORK TECHNOLOGY CO., LTD.

999 Peachtree Street Suite 2300, Fulton, Atlanta, GA, 30309, USA

Made in China

## About Yealink

Yealink (Stock Code: 300628) is a global brand that specializes in video conferencing, voice communications and collaboration solutions with best-in-class quality, innovative technology and user-friendly experience. As one of the best providers in more than 140 countries and regions, Yealink ranks No.1 in the global market share of SIP phone shipments (Global IP Desktop Phone Growth Excellence Leadership Award Report, Frost & Sullivan, 2019).

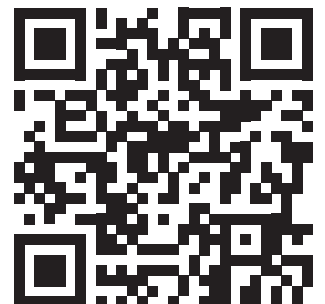
## Copyright

Copyright © 2021 YEALINK(XIAMEN) NETWORK TECHNOLOGY CO., LTD.

All rights reserved. No parts of this publication may be reproduced or transmitted in any form or by any means, electronic or mechanical, photocopying, recording, or otherwise, for any purpose, without the express written permission of Yealink(Xiamen) Network Technology CO., LTD.

## Technical Support

Visit Yealink WIKI (<http://support.yealink.com/>) for firmware downloads, product documents, FAQ, and more. For better service, we sincerely recommend you to use Yealink Ticketing system (<https://ticket.yealink.com>) to submit all your technical issues.



YEALINK(XIAMEN) NETWORK TECHNOLOGY CO.,LTD.  
Web: [www.yealink.com](http://www.yealink.com)

Copyright©2021 Yealink Inc. All rights reserved.