

# Yealink



## All-in-one Video Collaboration Bar MeetingBar A30



English | 简体中文 | Deutsch | Français | Español

**Quick Start Guide (V1.0)**

---

## Table of Contents

English.....	1
简体中文 .....	6
Deutsch.....	11
Français.....	16
Español.....	21

## Package Contents

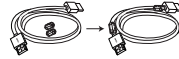
### • Standard accessories



MeetingBar A30



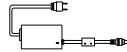
3m Ethernet Cable



1.8m HDMI Cable x2  
(for the display device)



Cable Ties x5



Power Adapter



Mounting Bracket and Accessories

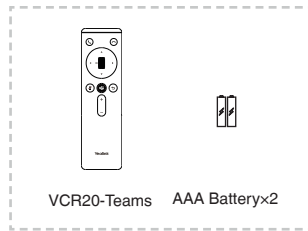


Silicone Pad x2



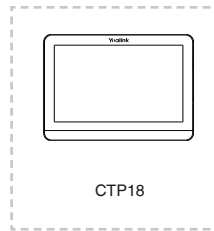
Quick Start Guide

### • Optional accessories



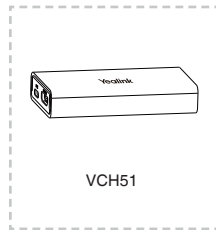
VCR20-Teams AAA Battery x2

Remote Control Package  
(Only Teams edition)



CTP18

Touch Panel Package



VCH51

VCH51 Sharing Kit



WPP20

Wireless Presentation Pod

#### Note:

- We recommend that you use the accessories provided or approved by Yealink. The unapproved third-party accessories may result in reduced performance.
- Use the Yealink original adapter (48V/0.7A) to charge the endpoint only. The use of the third-party adapter may cause the damage to the endpoint.
- Put the magnet rings on the HDMI cable to prevent electromagnetic interference.
- The device supports Yealink product CPW90 (Bluetooth wireless microphones) or some third-party Bluetooth microphones/headsets.

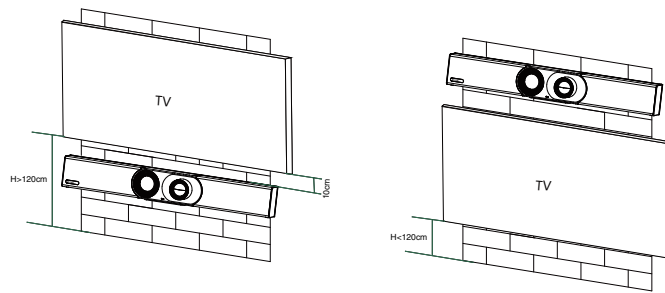
## Remove the Protective Shell



## Endpoint Installation

- Mount on a Wall

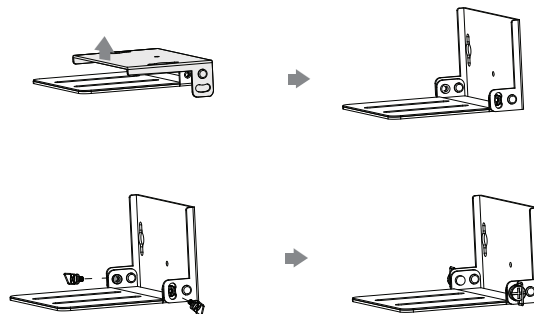
### A30 position



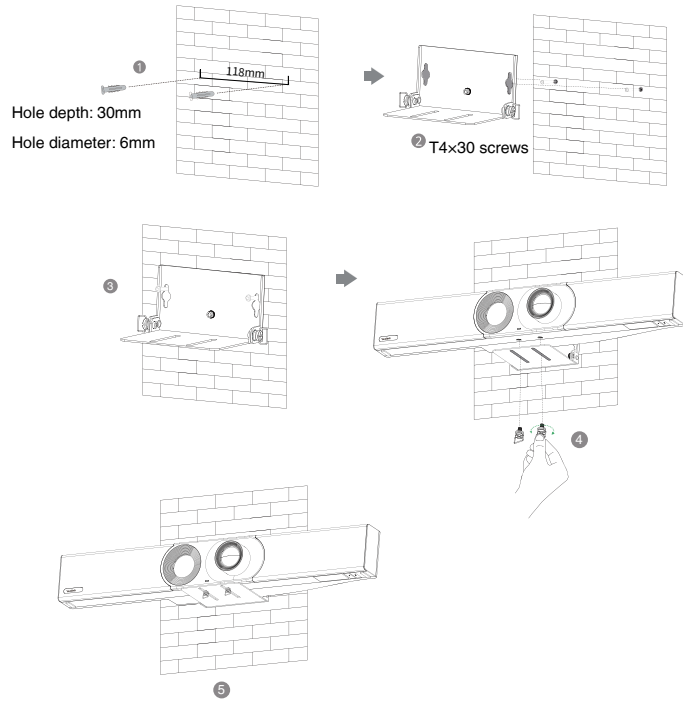
### Wall Mounting

Use the bracket to mount your endpoint on a wall. The mounting height affects your camera view. The recommended height is 1.1m above the ground.

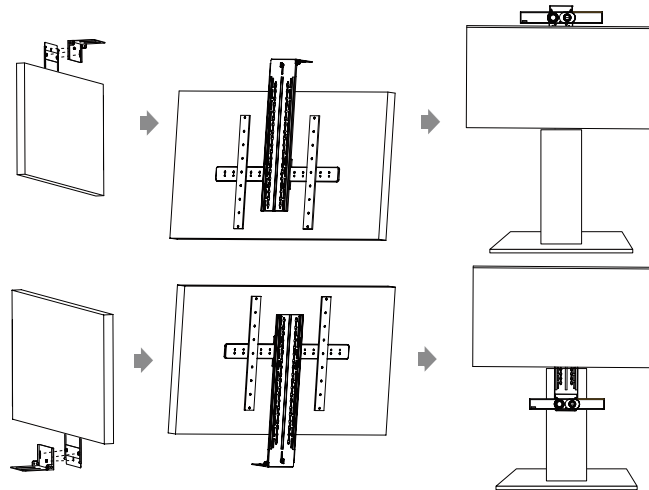
### Step1: Assemble the mounting bracket



**Step2: Mount the A30 to the wall**

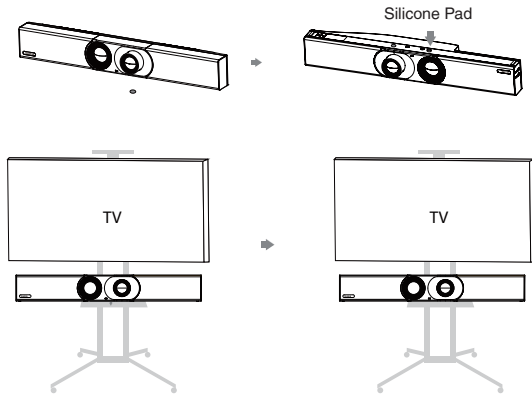


• **Using Yealink TV Mount Bracket**

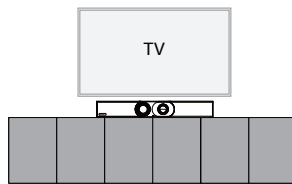


Note: The TV stand should be purchased separately.

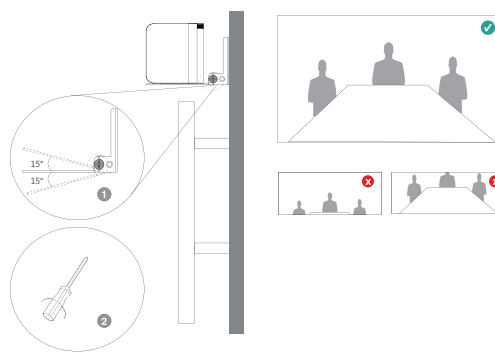
- Put on a TV stand cart platform



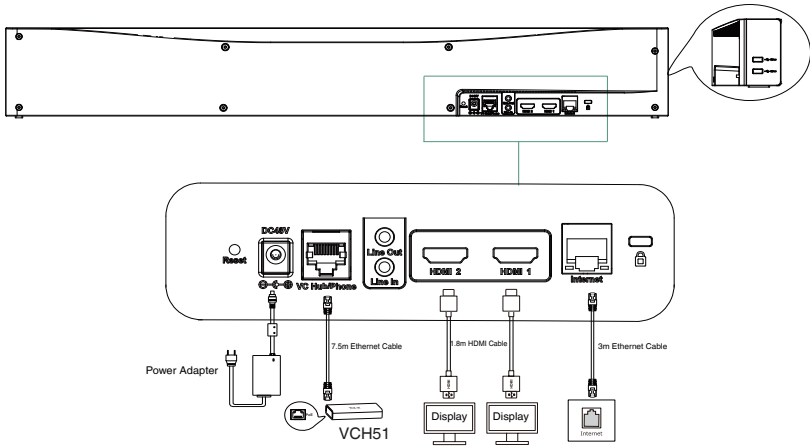
- Put on a desk



## Adjusting the Camera Tilt



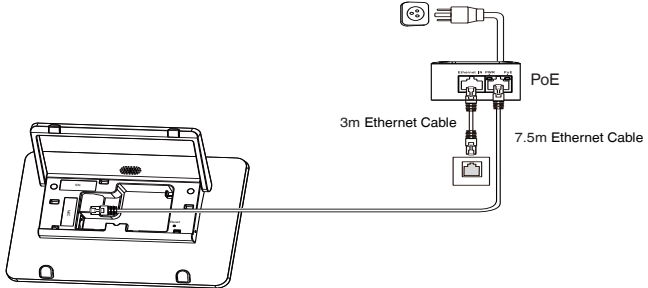
## Endpoint Connections



**Note:**

- If you connect a touch display device, you can operate the A30 either by remote control or touch control.
- If you connect a non-touch display device, you can use the remote control, mouse or CTP18.

## CTP18 Connection



**Pair the CTP18 with A30-Teams:**

Sign into the same Microsoft account on both CTP18 and the endpoint, then enter the PIN code according to the on-screen prompts, after that the system will be automatically paired with the CTP18.

**Pair the CTP18 with A30-Zoom:**

Enter the IP Address, then the system will be automatically paired with the CTP18.

## 包装清单

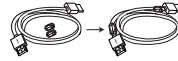
### · 标准配件



MeetingBar A30



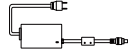
3米网线



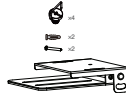
1.8米 HDMI 线 x2  
(用于接显示设备)



束线带 ×5



电源适配器



支架配件  
(用于安装主机)

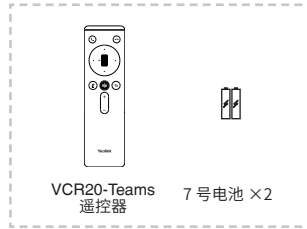


硅胶垫 x2



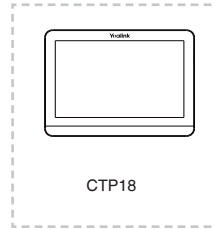
快速入门指南

### · 可选配件



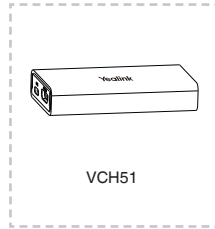
VCR20-Teams 遥控器  
7号电池 ×2

遥控器 (只适配 Teams)



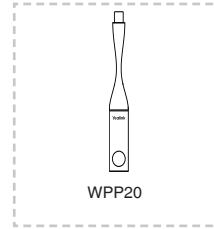
CTP18

触控平板



VCH51

有线投屏套件



WPP20

无线传屏器

#### 说明:

- 此为 A 级产品。在生活环境中，该产品可能会造成无线电干扰。在这种情况下，可能需要用户对干扰采取切实可行的措施。
- 我们推荐使用由亿联提供或经亿联认可的配件和线缆，使用未经认可的第三方配件和线缆可能会导致性能的下降。
- 使用 HDMI 线前，请套上磁环用于抗电磁干扰。
- 设备支持亿联产品 CPW90(蓝牙无线扩展麦)或部分第三方蓝牙耳机/耳机。



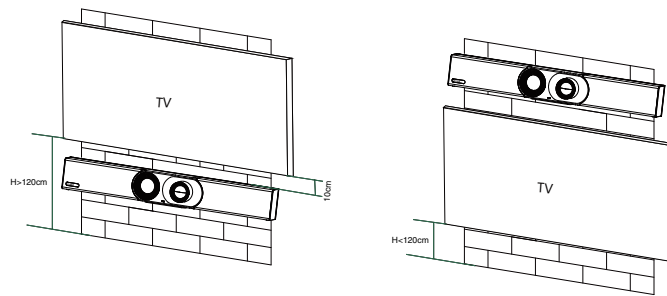
## 拆除镜头保护壳



## 安装终端

### · 墙装

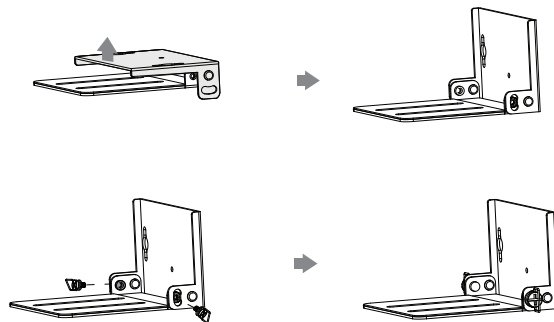
#### A30 位置



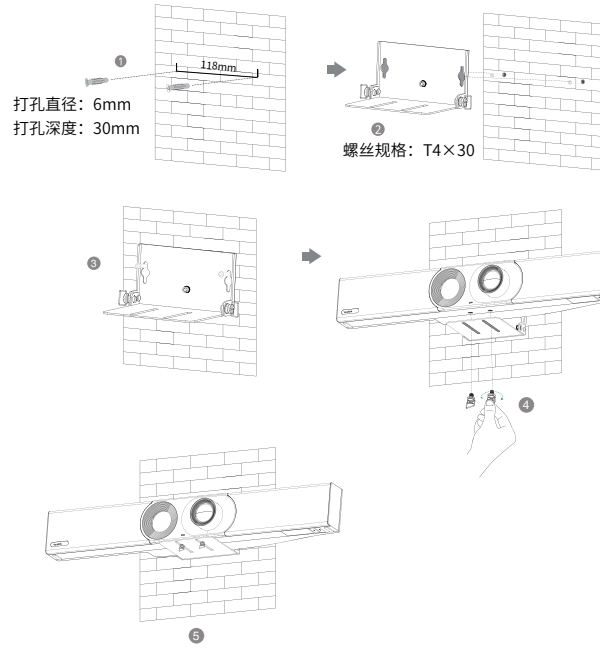
### 墙装

使用支架将终端安装在墙上。安装高度会影响摄像机的视野，建议终端安装的高度为离地面 1.1m。

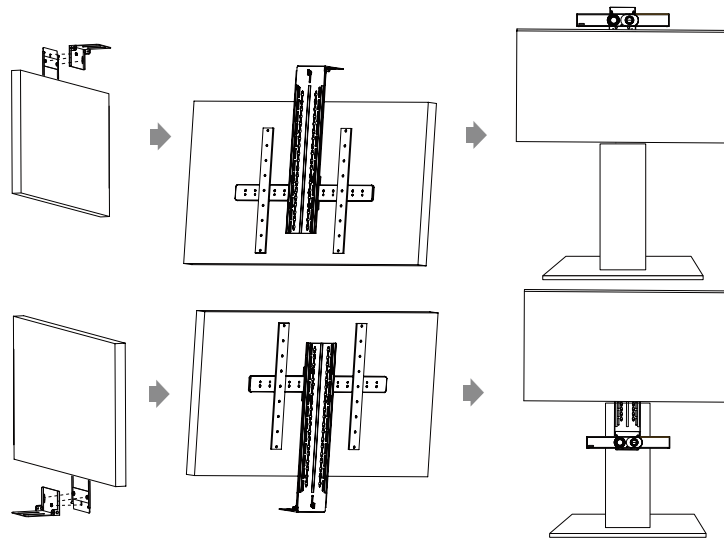
#### 步骤 1: 安装支架



步骤 2: 墙装

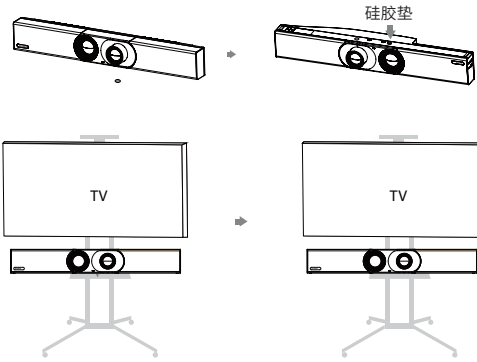


· 使用亿联专用电视挂架

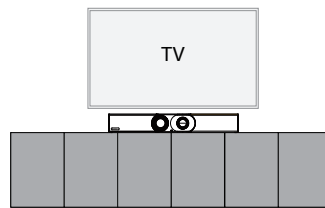


说明: 电视架需单独购买。

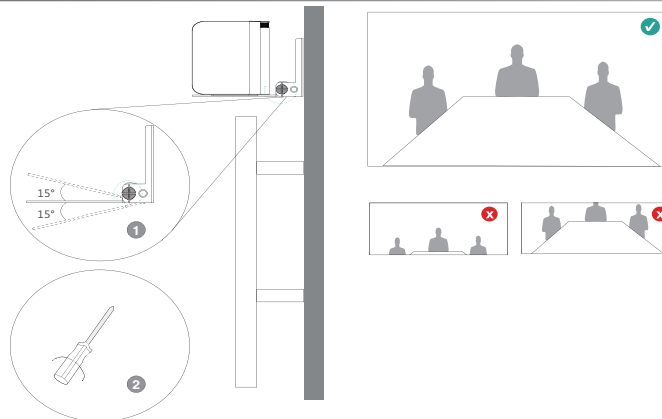
· 置于电视推车



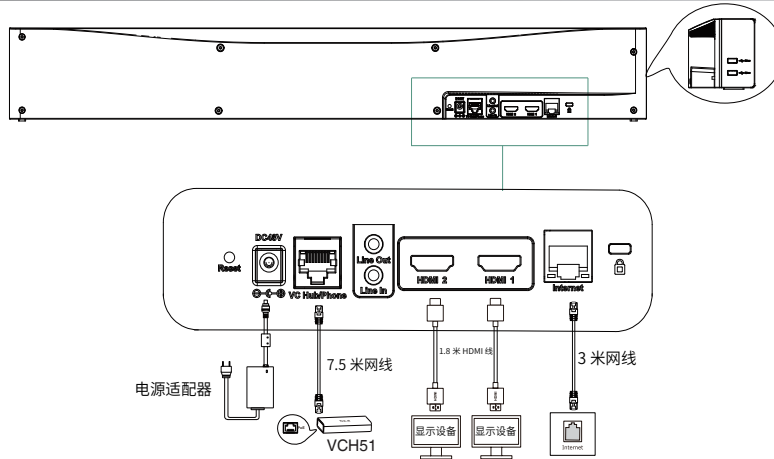
· 置于桌面



调整倾斜角度



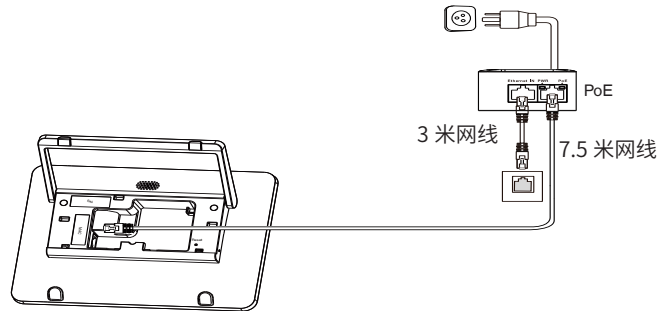
## 连接终端



### 说明:

- 如果你连接的是触控式显示设备,你可以使用遥控器或者触摸屏操作终端。
- 如果你连接的是非触控式显示设备,你可以使用遥控器,鼠标或 CTP18 操作终端。

## 连接 CTP18



### CTP18 与 A30-Teams 配对:

终端和 CTP18 登录相同的微软账号,根据终端显示器的界面提示内容,在 CTP18 上输入相应配对码后,系统将自动与终端进行配对。

### CTP18 与 A30-Zoom 配对:

在 CTP18 的登录界面,输入终端的 IP 地址,系统将自动与终端进行配对。

## Verpackungsinhalt

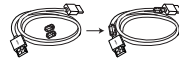
### • Standardzubehör



MeetingBar A30



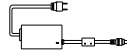
3M Ethernet-Kabel



1,8m HDMI-Kabelx2  
(für das Anzeigergerät)



Kabelbinder x 5



Netzgerät



Wandhalterung und Zubehör

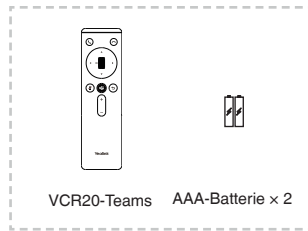


Silikonpadx2



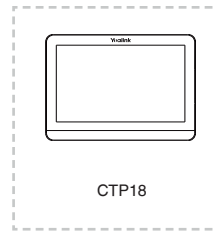
Kurzanleitung

### • Optionales Zubehör



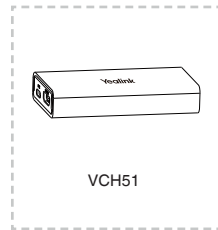
VCR20-Teams AAA-Batterie x 2

Fernbedienungspaket  
(Nur Teams-Edition)



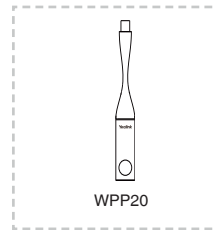
CTP18

Touchpanel-Paket



VCH51

VCH51 Freigabe-Set



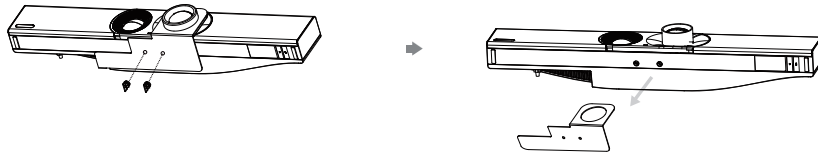
WPP20

Adapter für drahtlose Präsentationen

#### Hinweis:

- Wir empfehlen die Verwendung von Zubehör, das von Yealink entweder geliefert oder empfohlen wird. Der Gebrauch von Drittanbietern bereitgestellten Zubehörs, das von Yealink nicht freigegeben wurde, kann zu einer verminderten Leistungsfähigkeit führen.
- Verwenden Sie ausschließlich das Originalnetzteil von Yealink (48 V/0,7 A) zum Laden des Endpunkts. Die Verwendung eines Netzteils von einem Drittanbieter kann zur Beschädigung des Endpunkts führen.
- Setzen Sie die Magnetrings auf das HDMI-Kabel, um elektromagnetische Störungen zu vermeiden
- Das Gerät unterstützt das Yealink-Produkt CPW90 (drahtlose Bluetooth-Mikrofone) oder einige Bluetooth-Mikrofone/-Headsets von Drittanbietern.

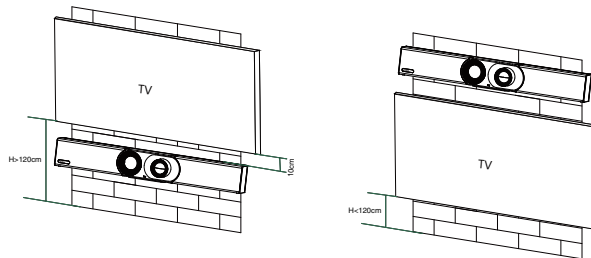
## Entfernen der Schutzhülle



## Endpunkt-Installation

- Wandmontage

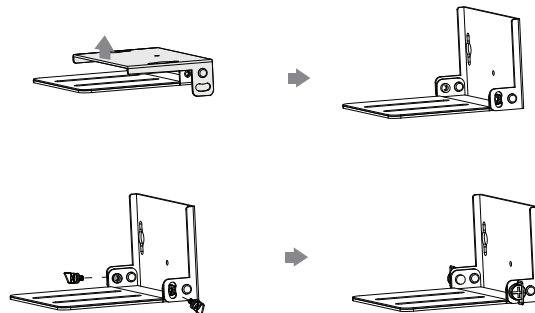
### A30-Position



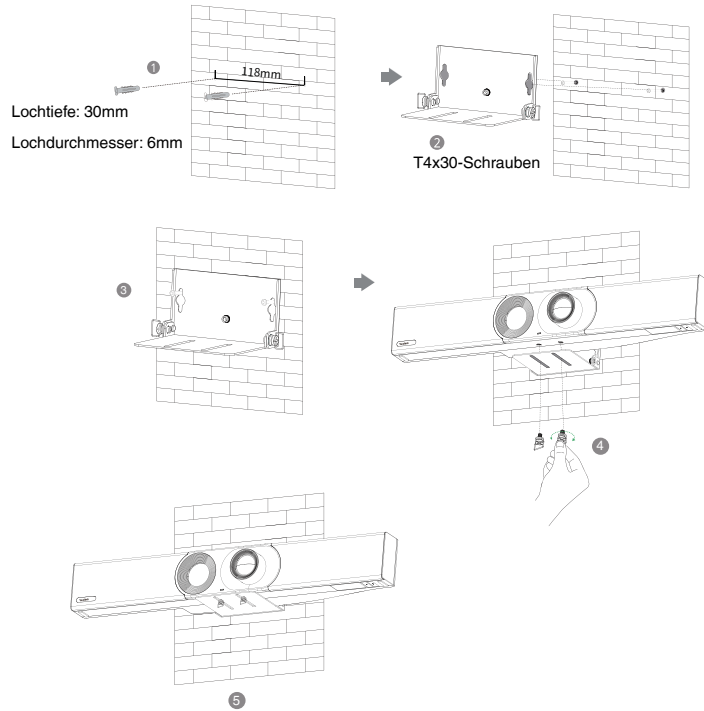
### Wandmontage

Verwenden Sie die Halterung, um Ihren Endpunkt an einer Wand zu montieren. Die Montagehöhe beeinflusst die Ansicht Ihrer Kamera. Es wird eine Höhe von 1,1 m über dem Boden empfohlen.

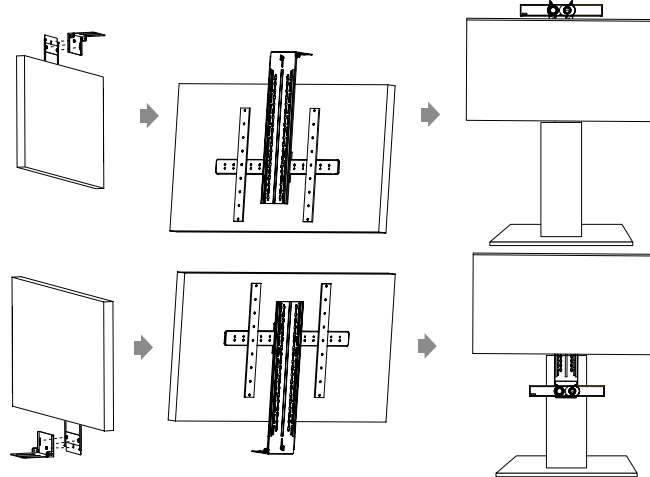
### Schritt 1: Setzen Sie die Montagehalterung zusammen



**Schritt 2: Montieren Sie das A30 an der Wand**

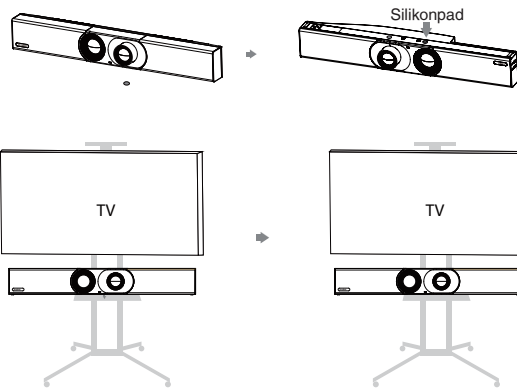


• mit der Yealink TV-Montagehalterung

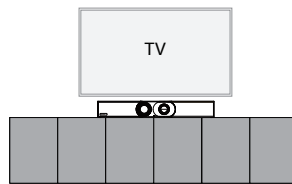


Hinweis: Der TV-Ständer sollte separat erworben werden.

- Auf eine Wagenplattform für einen TV-Ständer stellen



- Auf einen Schreibtisch stellen



## Einstellen der Kameraneigung

