

# Mobile Cloud Storage

## User Manual



## Content

Introduction .....	3
Package Content .....	3
Features .....	4
System Requirements .....	4
Mobile Cloud Storage app requirements.....	4
Specification.....	5
Getting to Know Mobile Cloud Storage .....	6
Recharging Battery.....	7
Connecting to a Computer.....	7
Disconnecting the Device from a Computer.....	7
Installing the Mobile Cloud Storage App .....	8
Connecting to Mobile Cloud Storage device .....	9
Using the Mobile Cloud Storage App.....	9
Viewing Photos .....	10
How to upload photo file from iPhone/iPad/iPod to Mobile Cloud Storage .....	11
How to download a photo from Mobile Cloud Storage device to your iPad/iPhone/iPod .....	13
How to review that you just uploaded a photo.....	14
Playing Music .....	15
Playing Videos .....	16
How to Upload Record Video from your iPad/iPhone/iPod to Mobile Cloud Storage device.....	17
Viewing Document.....	21
How to send the document by mail.....	22
Settings.....	24
Troubleshooting.....	25

## Introduction

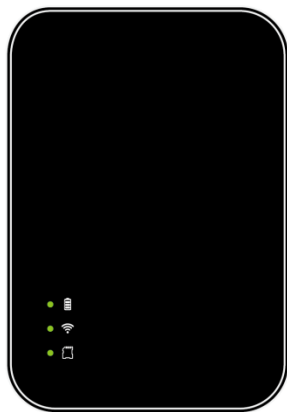
Congratulations on purchasing a Mobile Cloud Storage! The Mobile Cloud Storage is both a wireless and portable storage device. Using a wireless connection, data can be transferred to your iPhone, iPad, iPod Touch, Android phone. Mobile Cloud Storage can be easy to play and view your photo, music, video and document.

Up to 3 devices can stream different media files from Mobile Cloud Storage at the same time and mean you can share your favorite digital content with friends and family anywhere, anytime.

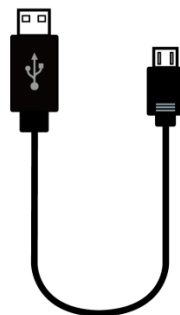
### Remark:

- Please charge your new Mobile Cloud Storage fully before using it for the first time.
- The maximum playback time will depend on how many users are simultaneously streaming content and the resolution of any videos being streamed.
- Wi-Fi data transfer rates may vary based on user environment, distance, and number of users.
- Please SD Card don't use it on lock mode.
- Please plug the SD Card first before using Mobile Cloud Storage and then open the power.
- Please don't take out the SD Card when you're using the Mobile Cloud Storage.

## Package Content



Mobile Cloud Storage device



Micro USB Cable

## Features

- Wirelessly stream a Photo/Music/Video/Document file to your iPad, iPhone or Android device
- Stream different digital content on 3 devices simultaneously
- Support Bridge Mode
- Support iOS/Android
- Support SD slot (SDHC and SDXC Class 6 above)
- Micro USB 2.0 connector for data transfers
- Support Photo upload/download
- Upload record video from your device's library
- Support send document as mail attachment
- Special Free App for Android/iOS devices
- Small-scale dimensions and lightweight
- Li-Battery supports 4hrs playback

## System Requirements

The Mobile Cloud Storage supports the following operating systems for transferring data with a USB cable :

- Microsoft Windows® XP
- Microsoft Windows Vista®
- Microsoft Windows® 7
- Mac® OSX 10.5 or later

Mobile Cloud Storage app requirements :

- iOS devices :  
Compatible with iPhone 3GS, iPhone 4, iPhone 4S, iPhone 5, iPod touch (3rd generation), iPod touch (4th generation), iPod touch (5th generation) and iPad.  
Requires iOS 4.3 or later.
- Android devices :  
Android 2.3.3 and above

# Specification

- Support video resolution to 720P
- Wireless Interface : WiFi b/g/n
- Battery Capacity: 1300mAh
- 3 LED Lights : Power LED / Wireless status LED / SD Card LED
- Dimension : 83.6 X 58 X 12.3 mm
- Weight : 57g
- SD Card format : FAT32

Media Format	iOS	Android
Music	MP3, M4A, AAC, and WAV	MP3, M4A, AAC,WAV, OGG and FLAC (android version 4.0.2 later),WMA
Video	MP4, M4V, MOV, AVI, 3GP	1. MP4 and 3GP 2. AVI, DIVX, MKV, MOV, MPEG, WMV, WEBM, RMVB
Image	JPG, PNG, JPEG, TIFF, TIF, GIF, BMP, BMPF, ICO	JPG,PNG
Document	TXT, XLS, PDF, PPT, DOC, RTF, KEYNOTE (iWork 09 or later), NUMBERS (iWork 09 or later), PAGES (iWork 09 or later), DOCX, PPTX.	TXT, RTF, *XLS,*PDF,*PPT,*DOC,*DOCX,*PPTX  (*Mostly document reader need to install additionally.)

# Getting to Know Mobile Cloud Storage



Function	Operation
Power Switch	<ul style="list-style-type: none"> <li>■ Switch ON for wireless connectivity</li> <li>■ Switch OFF for data transfer</li> </ul>
LED	<ul style="list-style-type: none"> <li>■ LED(Power)                             <ul style="list-style-type: none"> <li>-Solid Green : Power ON</li> <li>-Solid Red : Charging / Low battery</li> </ul> </li> <li>■ LED(SD Card)                             <ul style="list-style-type: none"> <li>-Flash Green : Reading SD Card</li> </ul> </li> <li>■ LED(Wifi)                             <ul style="list-style-type: none"> <li>-Flash Green: Wireless signal is initiating.</li> <li>-Flash Green (Solid): Wireless is connecting.</li> </ul> </li> </ul>
Micro USB Port	<ul style="list-style-type: none"> <li>■ Connect to your computer for fast and easy data transfers. Also used for charging with included USB cable</li> </ul>
Reset	<ul style="list-style-type: none"> <li>■ Press for 7 seconds to restore Mobile Cloud Storage setting to factory defaults.</li> <li>■ Press for 3 seconds to restart Mobile Cloud Storage device.</li> </ul>

SD Card Slot	■ Plug your SD Card (Support SDHC and SDXC)
--------------	---

## Recharging Battery

Please charge your new Mobile Cloud Storage fully before using it for the first time. You can charge the Mobile Cloud Storage through Micro USB port on your desktop or notebook. And charging state, you can depend on the power light to judge.

## Connecting to a Computer

- When connected to a computer, Mobile Cloud Storage acts like a normal hard disk drive which means it can store any file but will only stream files supported by Mobile Cloud Storage.
- Mobile Cloud Storage can operate in two different modes when connected to a computer depending on the power button position.

### 1. Power OFF (USB Data Transfer):

The Mobile Cloud Storage will act as a USB flash drive and can transfer data through the USB. This mode will charge the internal battery, however Mobile Cloud Storage's wireless function isn't available.

### 2. Power ON (USB Charge & Stream only):

Battery recharging and wireless data transfer functions can be used simultaneously. But data transfer from your computer isn't available in this mode. When you used to charge & stream two functions at the same time in this mode, please note the Mobile Cloud Storage isn't fully charge forever. If you want to be full charge it, please use the Power Off this mode.

## Disconnecting the Device from a Computer

### ■ For Window user:

Click on the USB icon located in the taskbar at the lower right-hand corner and select "Safely Remove Hardware". You may now safely disconnect the Mobile Cloud Storage.

### ■ For Mac user:

Drag and drop the drive icon into the trash. You may now safely remove the Mobile

Cloud Storage.

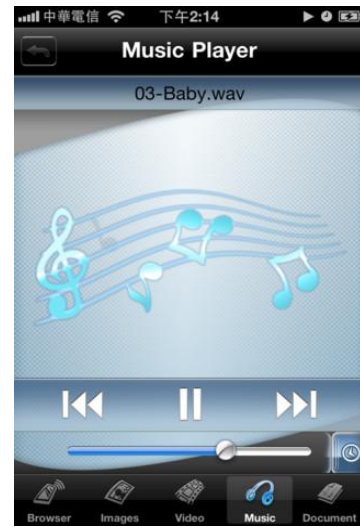
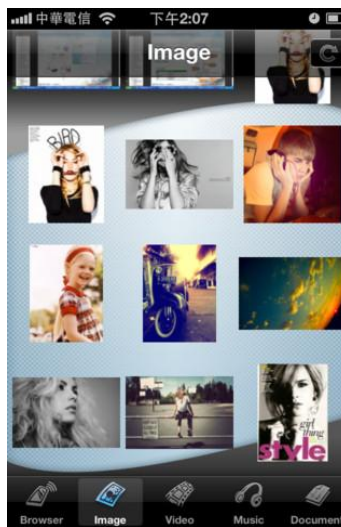
## Installing the Mobile Cloud Storage App

Developed specifically for iOS/Android devices, the Mobile Cloud Storage App is a free media application. The App organizes data into file types for easy viewing and playback of documents, photos, music and movies.



### Download Free App from App Store/Google Play. Search the “Mobile Cloud Storage”

This App works with "Mobile Cloud Storage" devices to stream photos, videos, music, and document from the device to iDevices (iPhone, iPod, iPad) or Android devices.





## Connecting to Mobile Cloud Storage device

Mobile Cloud Storage device is its own independent wireless network. When you want to use it, you must first connect to Mobile Cloud Storage's dedicated wireless network.

Please follow as below setup:

Step 1 → On the Mobile Cloud Storage device, switch the power button to the ON position and wait few seconds until wireless LED is flashing green light, indicating wireless connectivity has been activated.

Step 2 → On your iOS/Android device's settings, into Wireless & networks.

Step 3 → Under Wi-Fi networks, selecting "Wifi SD" and start connecting.

Step 4 → Full connectivity is indicated by the Wi-Fi icon in the status bar.

Step 5 → Press the Home button on your iOS/Android device and then tap the Mobile Cloud Storage App to open the application.

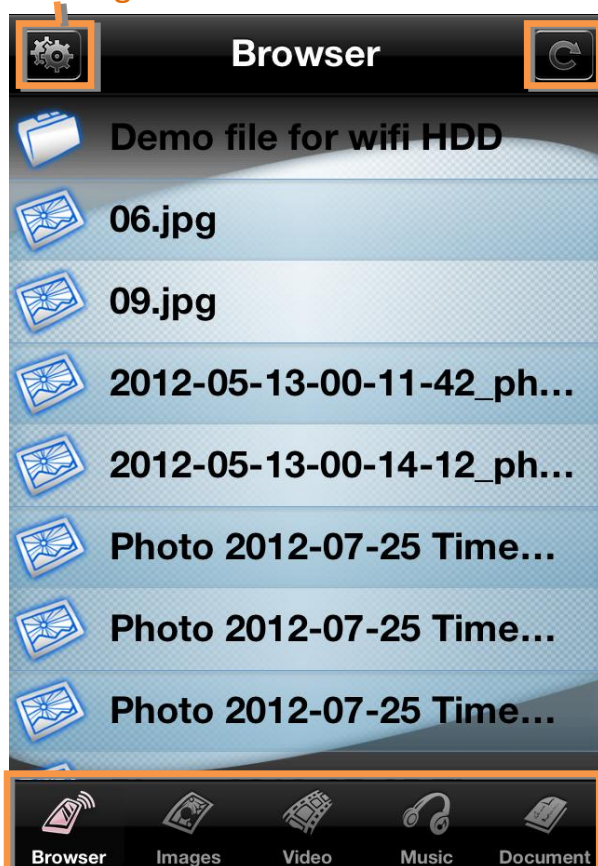
## Using the Mobile Cloud Storage App

When your iOS/Android device and Mobile Cloud Storage are connected wirelessly, you can browse content on Mobile Cloud Storage App. The following sections provide instructions on how to view and playback your digital content on the App.

Note: Please make sure your media format for Mobile Cloud Storage supported.

When you launch the app, you will see as below browser page...

### Setting Button

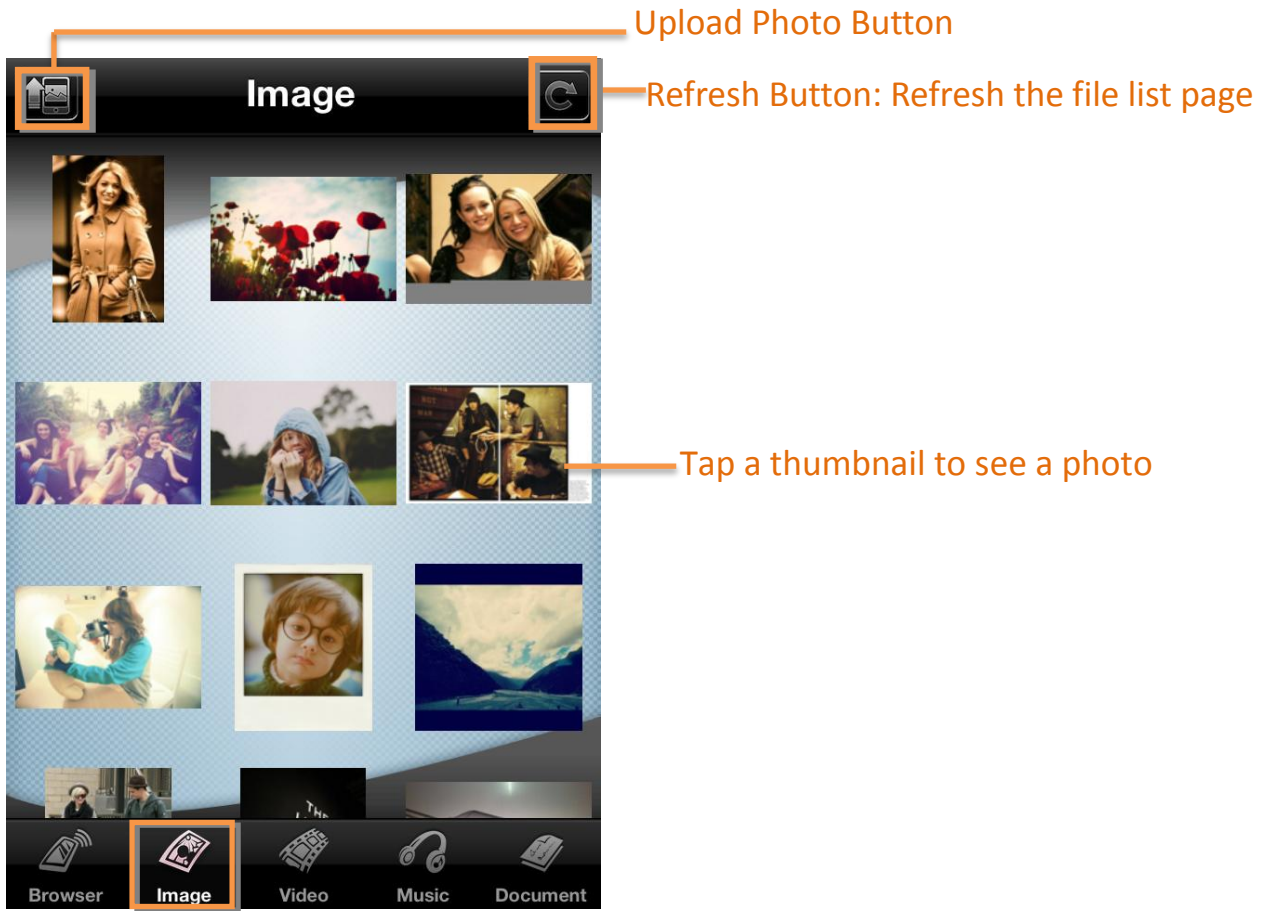


Refresh Button: Refresh the file list page.

Function Option

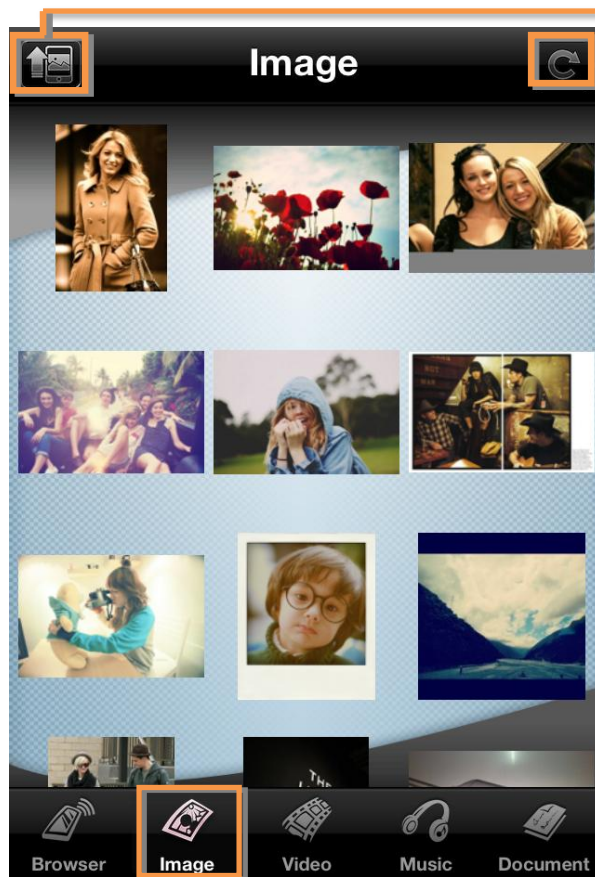
# Viewing Photos

Select the Image option, let you view photos in SD card.



# How to upload a photo from iPhone/iPad/iPod to Mobile Cloud Storage

Step 1 → Go to image option and tap upload button.



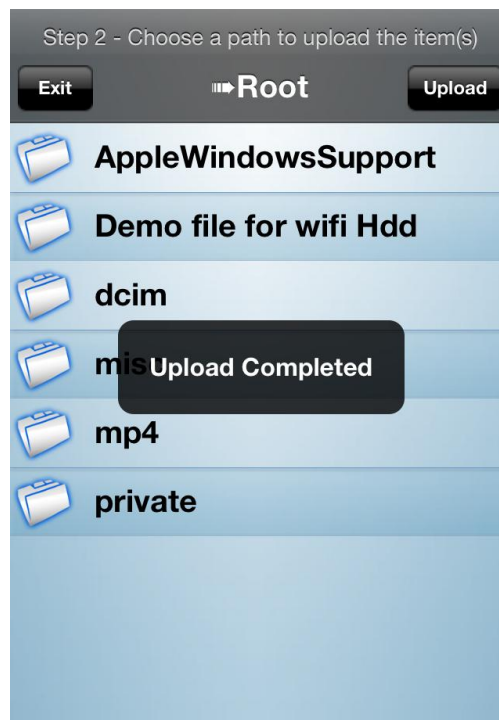
Upload Photo Button

Refresh Button: Refresh the file list page

Step 2 → You'll access your iPad/iPhone/iPod photo gallery and pick a photo for upload.



**Step 3** → Choose a path to upload the item  
Tap the “Upload” then it’ll pop up the “Upload Completed” message.  
It stands for upload successful.

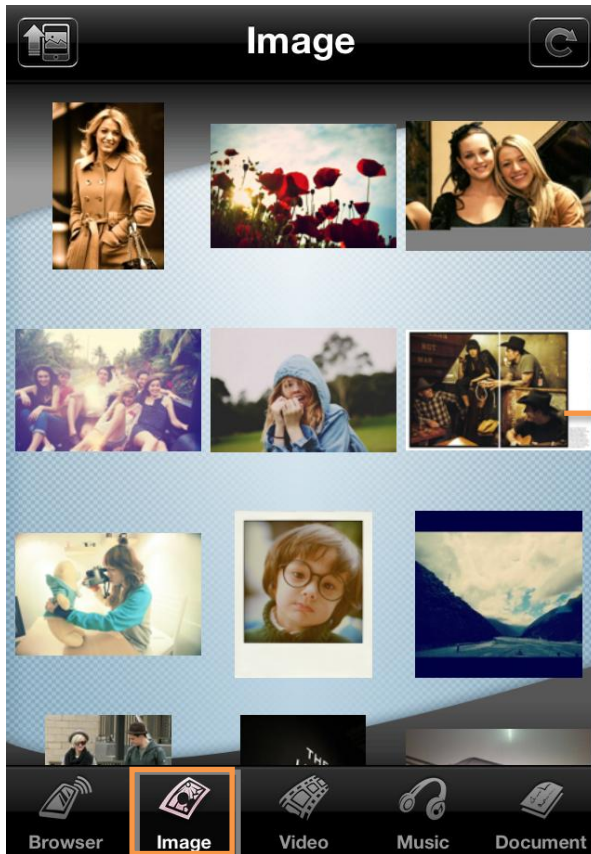


# How to download a photo from Mobile Cloud

## Storage device to your iPad/iPhone/iPod

Step 1 → Go to Image option and tap a thumbnail to see a photo.

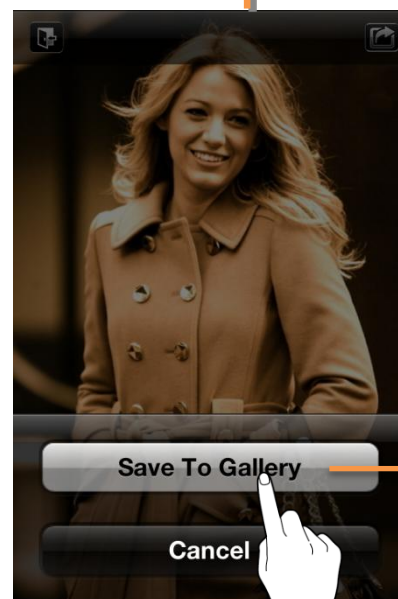
Step 2 → Tap download photo button.



Tap a thumbnail to see a photo



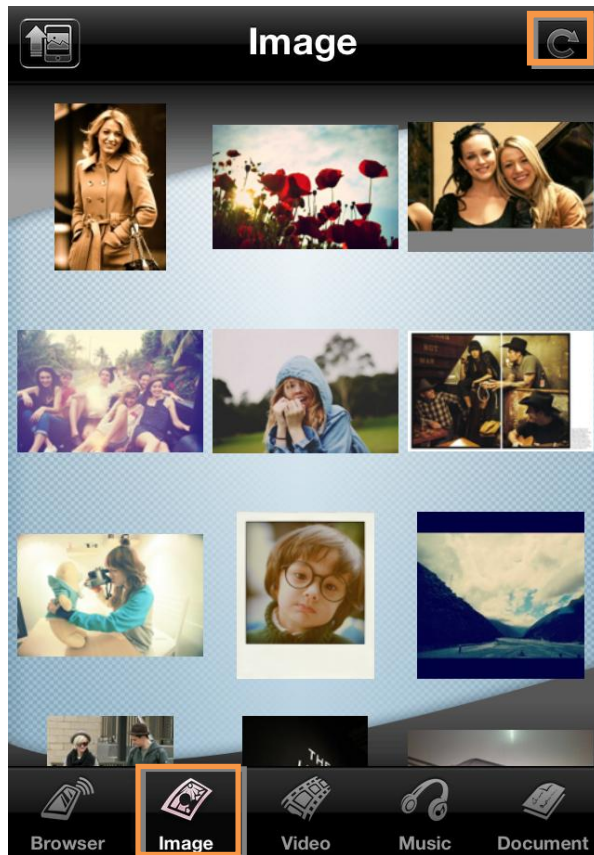
Download Photo Button



A photo will be saved to your iPad/iPhone/iPod gallery.

# How to review that you just uploaded a photo

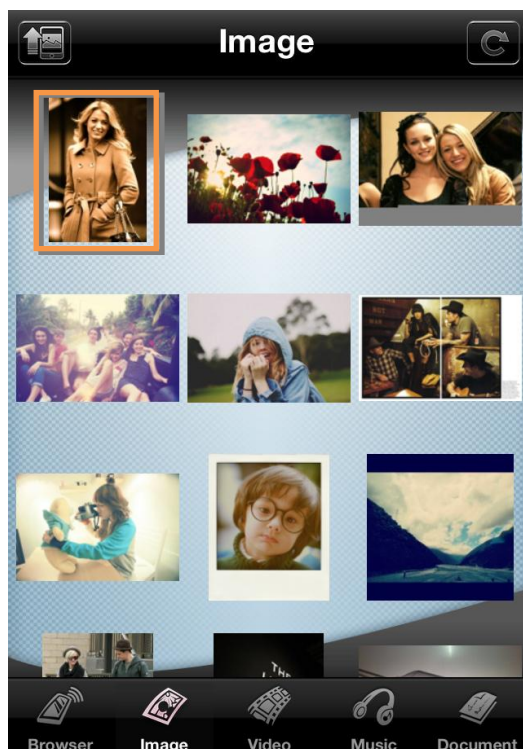
Step 1 → Go to image option and tap refresh button.



Refresh Button: Refresh the file list page

Step 2 → You'll review that just uploaded a photo.

Or you can go to browser option and tap refresh button. It'll display the photo uploaded date.



# Playing Music

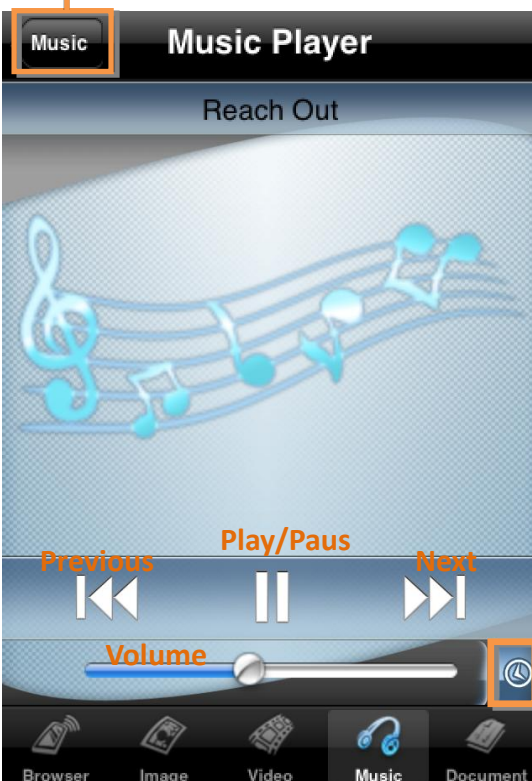
Select the Music options, you can view and listen to music in SD card.



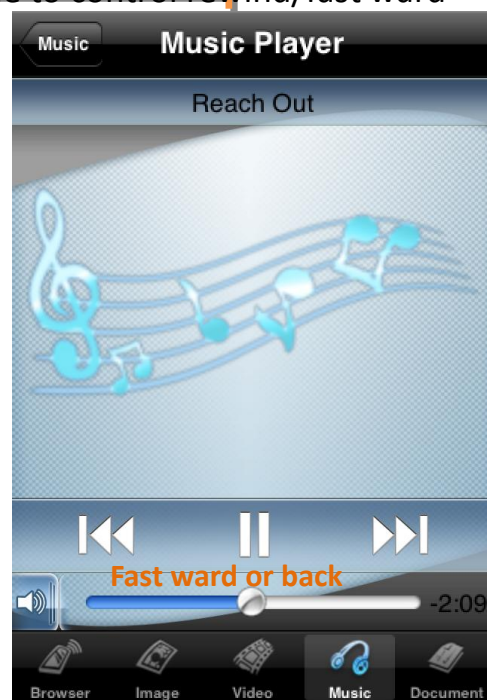
Refresh Button: Refresh the file list page

Tap the music to play  
It'll begin to play automatically.

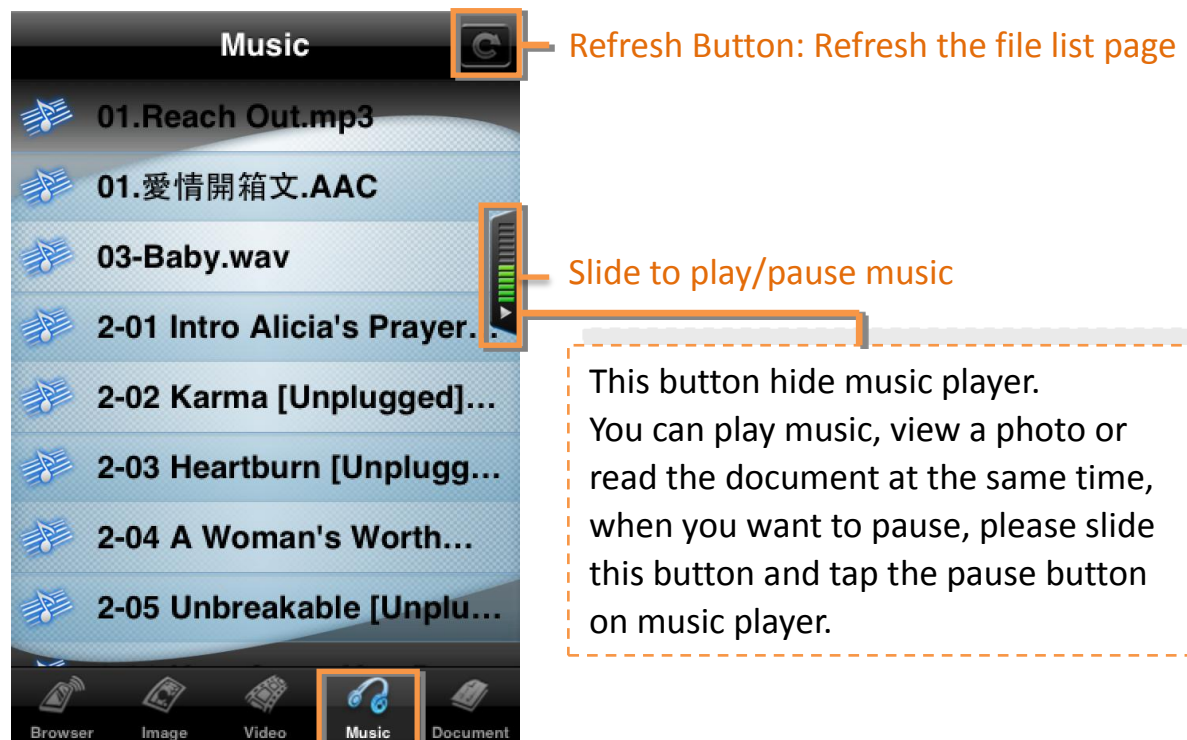
## Back Button



Slide to control rewind/fast ward

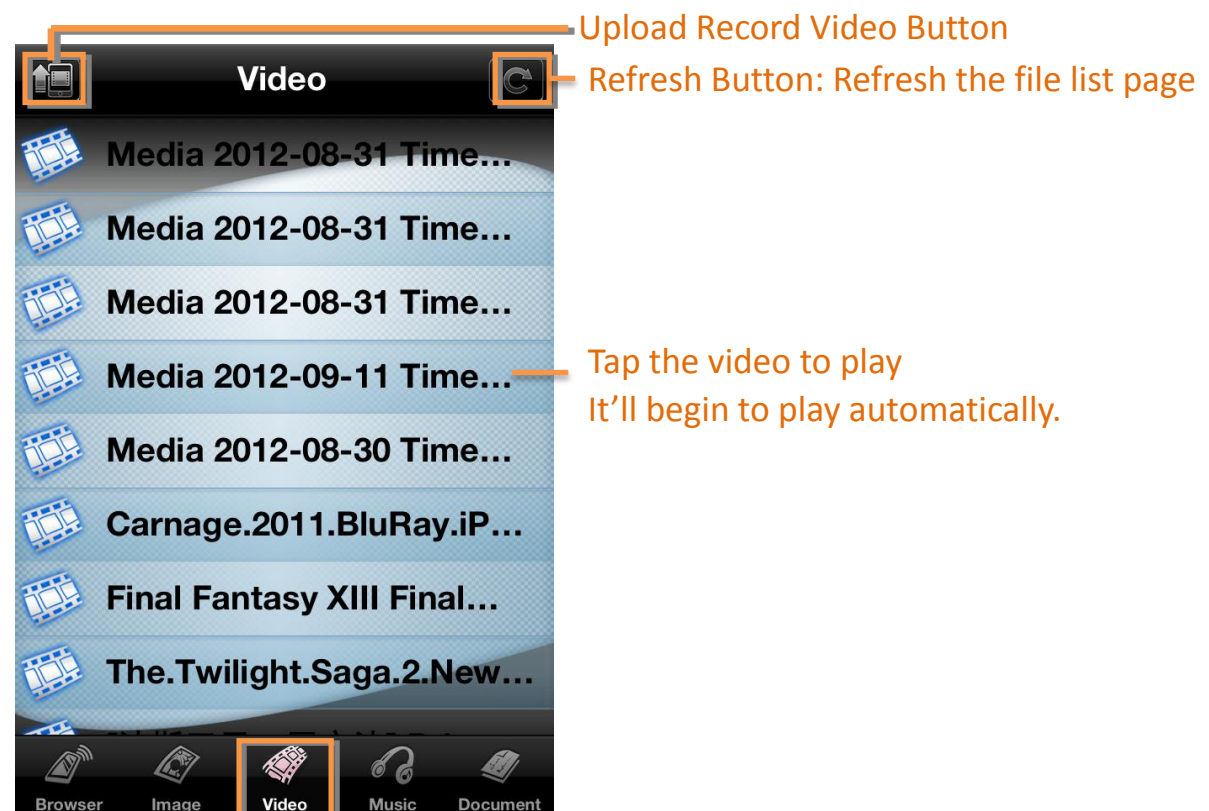


When you tap the back button to back the music list, music player will be hidden. It's like as below ....



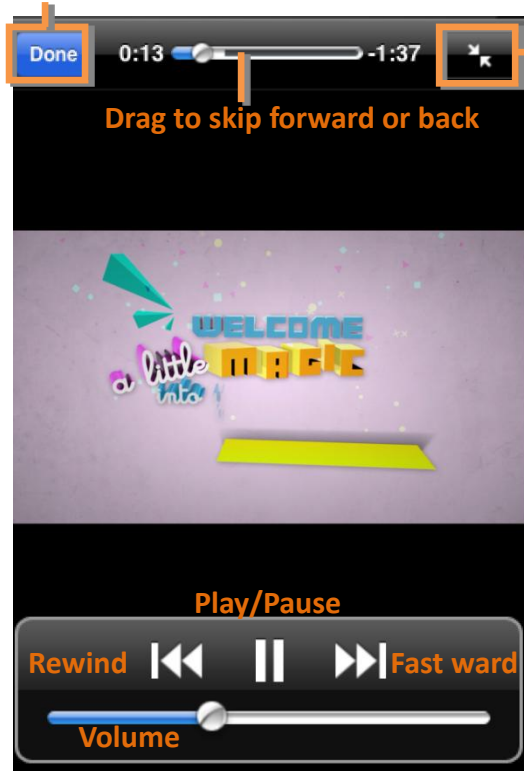
## Playing Videos

Select the Video option, you can view videos in SD card.





Back Button



Aspect Ratio

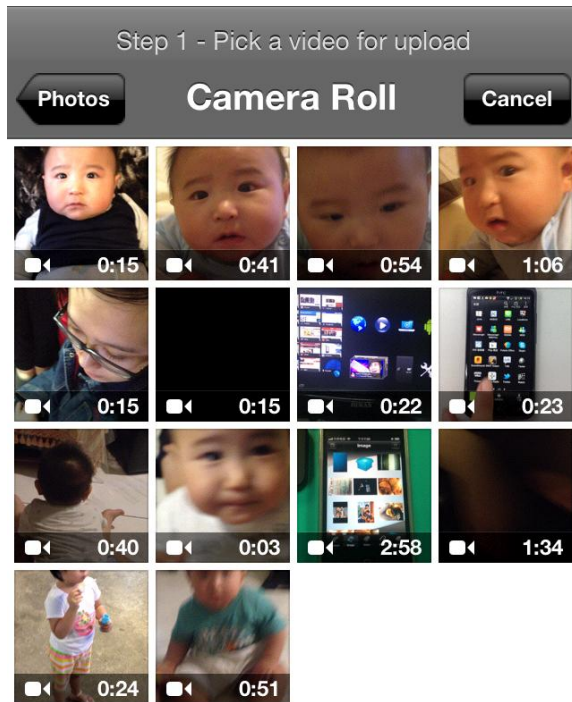
## How to Upload Record Video from your iPad/iPhone/iPod to Mobile Cloud Storage device

Step 1 → Go to Video option and tap the Upload button.

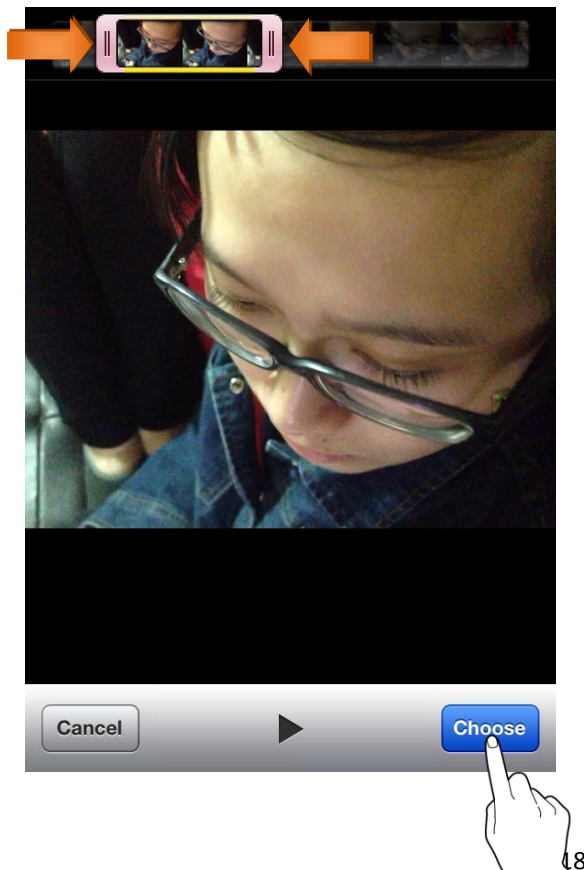


Upload Record Video Button

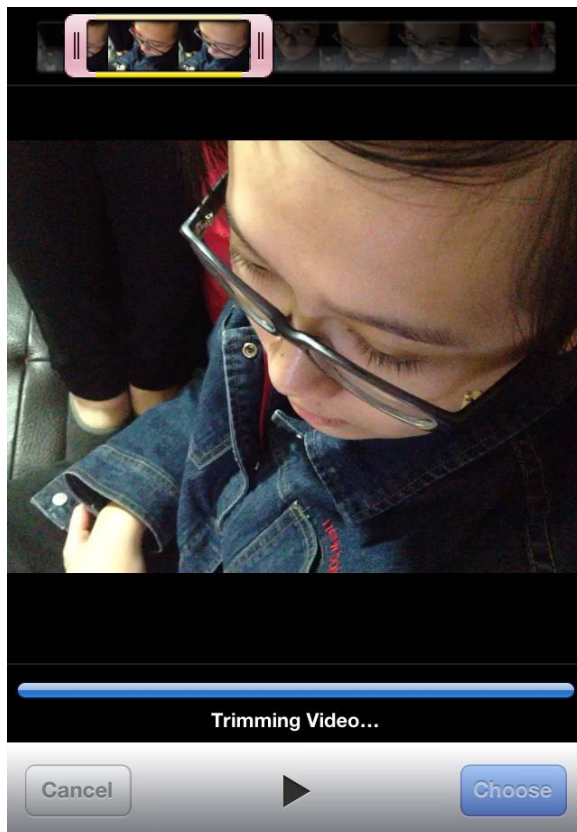
Step 2 → You'll access your iPad/iPhone/iPod video gallery and pick a video for upload.



Step 3 → You can trim the frames from the beginning and end of a video that you just recorded. Then tap Choose button.

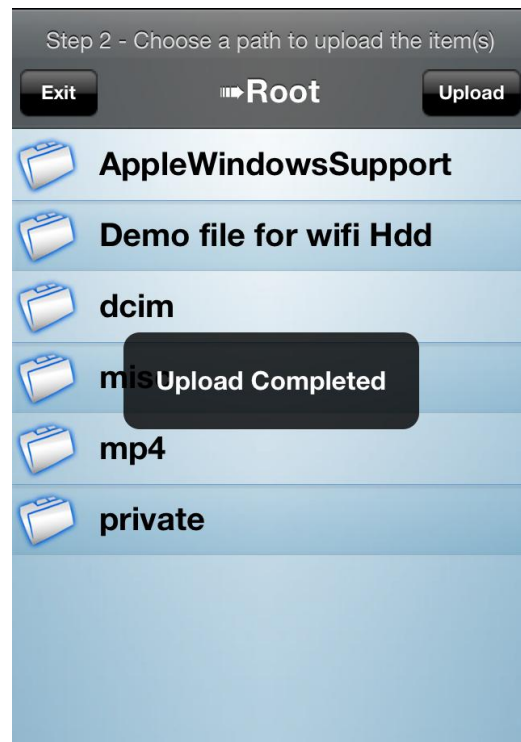
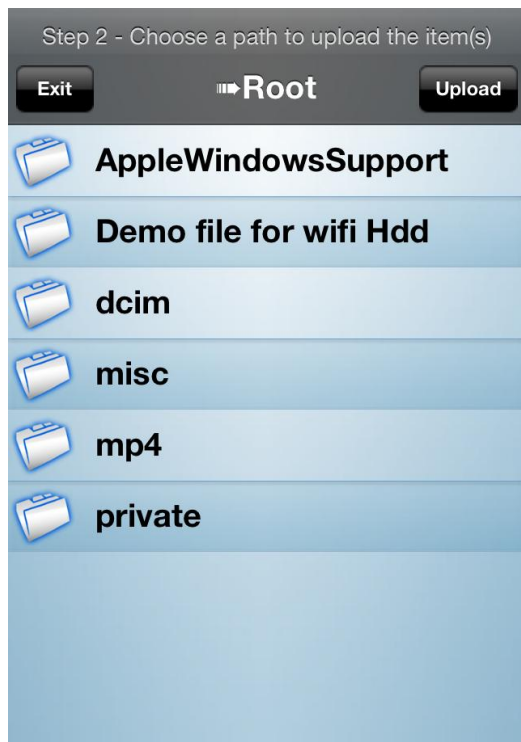


Step 3 → Trimming Video...



Step 4 → Choose a path to upload the item

Tap the "Upload" then it'll pop up the "Upload Completed" message. It stands for upload successful.



# How to review that you just uploaded record video

Step 1 → Go to Video option and tap refresh button.



Refresh Button: Refresh the file list page

Step 2 → You'll review that you just uploaded record video.  
For example, you uploaded record video at September 11, 2012  
It'll display the video uploaded date.



# Viewing Document

Go to document option, you can view documents in SD card.  
And selecting the document what you want to read, it will begin to view automatically.



Refresh Button: Refresh the file

Tap the document to view  
It'll begin to display automatically.

## Back Button



Send document as mail attachment


When viewing document, you can zoom in and out.


## How to send the document by mail

Step 1 → Please check whether you set your mail account or not.

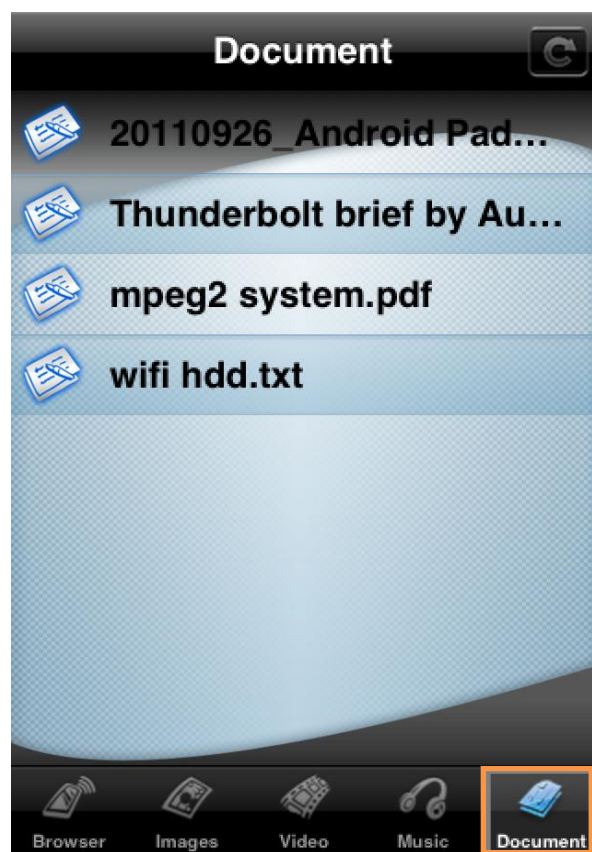
If not, the  icon will not display while viewing document.


Then you can't send the document by mail.

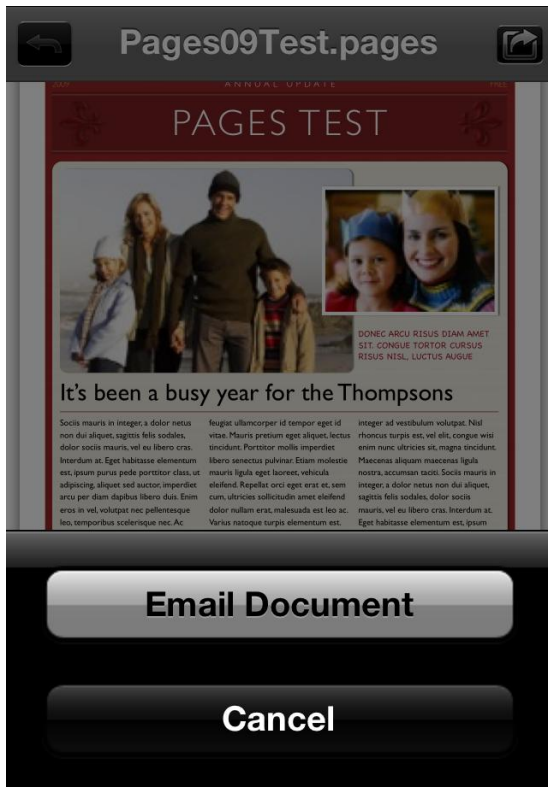
✳️**Setting the mail account:** Go to Settings  > Mail, Contacts,

Calendars , then tap **Add Account**.

Step 2 → Go to document option and tap your desired document to send.



Step 2 → Tap  and select “Email Document”



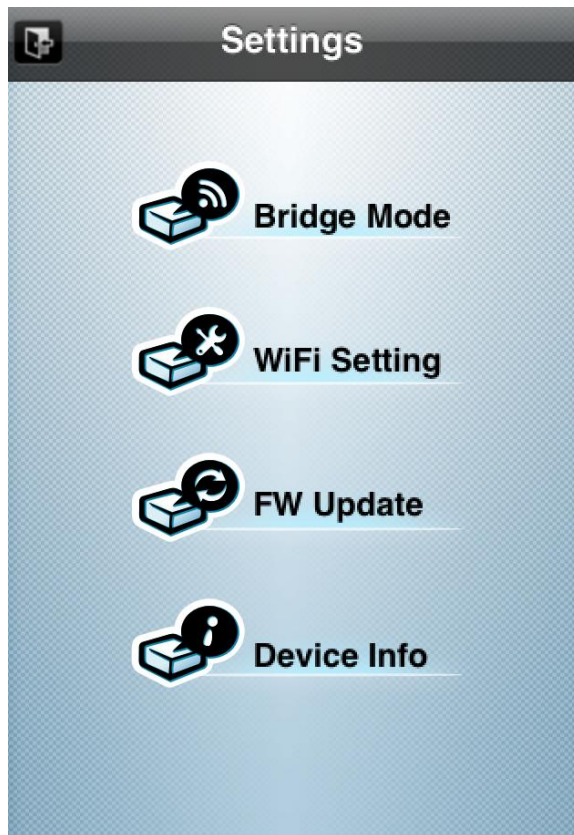
Step 3 → The document will be displayed as attachment in mail message.



The document is attached.

Sent from my iPhone

# Settings



- **Bridge Mode:** To enable Mobile Cloud Storage to connect to the Internet through an external wireless access point.  
Turn on Bridge Mode>choose your network>Enter Password (make sure to enter correct password)>Follow Mobile Cloud Storage screen instruction (Restart Mobile Cloud Storage device again)





- **WiFi Setting:** Change SSID and Set password of Mobile Cloud Storage  
(Password restriction to unsupported characters)
- **FW Update:** Use this function to keep your Mobile Cloud Storage device up-to-date with the latest firmware version.
- **Device Info :**
  - FW Version → Let you check your Mobile Cloud Storage version.
  - Bridge Mode → Make sure whether your bridge mode is connected or not.
  - Device Free Space → Security check for free space left

## Troubleshooting

1. Can't connect wirelessly to Mobile Cloud Storage device
  - Please make sure the Mobile Cloud Storage device is powered on and Wifi's LED is flash solid green light.
  - Be sure that you have selected the "WiFi SD" from your iOS/Android device's wireless network list. If you leave the Mobile Cloud Storage device's wireless range, your iOS/Android device will disconnect with Mobile Cloud Storage device and you must rejoin the network again.
2. Can't play a music/video file or view a photo/document.
  - Please make sure that the file format is supported by Mobile Cloud Storage.
3. Can't send a document as mail attachment
  - Please make sure whether you set mail account or not on your iOS/Android device.
4. Can't connect to my computer
  - Please make sure whether Mobile Cloud Storage is powered off.
5. Can't use the Bridge Mode.
  - Please make sure whether you follow the bridge mode instruction to do. Turn on the bridge mode>choose a network>enter password>restart the Mobile Cloud Storage>Connect the Mobile Cloud Storage device again
  - If you make sure to follow instruction, please check whether you enter correct password or not. Enter wrong password will not bridge your internet connection.
6. Can't read the content in SD Card.
  - You must plug SD Card first and then Mobile Cloud Storage device is powered on.

- Don't use the Mobile Cloud Storage device when your SD Card is locked.
7. I forgot your password and you don't connect to your Mobile Cloud Storage device.
- Please press and hold the reset button for 7 seconds. This will restore the Mobile Cloud Storage device to original factory settings. Data stored in your SD Card which will not be deleted.

## Federal Communication Commission

### Interference Statement

This equipment has been tested and found to comply with the limits for a Class B digital device, pursuant to Part 15 of the FCC Rules. These limits are designed to provide reasonable protection against harmful interference in a residential installation.

This equipment generates, uses and can radiate radio frequency energy and, if not installed and used in accordance with the instructions, may cause harmful interference to radio communications. However, there is no guarantee that interference will not occur in a particular installation. If this equipment does cause harmful interference to radio or television reception, which can be determined by turning the equipment off and on, the user is encouraged to try to correct the interference by one of the following measures:

- . Reorient or relocate the receiving antenna.
- . Increase the separation between the equipment and receiver.
- . Connect the equipment into an outlet on a circuit different from that to which the receiver is connected.
- . Consult the dealer or an experienced radio/TV technician for help.

This device complies with Part 15 of the FCC Rules. Operation is subject to the following two conditions:

(1) This device may not cause harmful interference, and (2) This device must accept any interference received, including interference that may cause undesired operation.

***FCC Caution:*** To assure continued compliance, any changes or modifications not expressly approved by the party responsible for compliance could void the user's authority to operate this equipment. (Example - use only shielded interface cables when connecting to computer or peripheral devices).

#### ***FCC Radiation Exposure Statement***

This equipment complies with FCC RF radiation exposure limits set forth for an uncontrolled environment. This equipment should be installed and operated with a minimum distance of 20 centimeters between the radiator and your body.

This transmitter must not be co-located or operating in conjunction with any other antenna or transmitter.

The antennas used for this transmitter must be installed to provide a separation distance of at least 20 cm from all persons and must not be co-located or operating in conjunction with any other antenna or transmitter.

## **NCC 警語**

### 第十二條

經型式認證合格之低功率射頻電機，非經許可，公司、商號或使用者均不得擅自變更頻率、加大功率或變更原設計之特性及功能。

### 第十四條

低功率射頻電機之使用不得影響飛航安全及干擾合法通信；經發現有干擾現象時，應立即停用，並改善至無干擾時方得繼續使用。

前項合法通信，指依電信法規定作業之無線電通信。

低功率射頻電機須忍受合法通信或工業、科學及醫療用電波輻射性電機設備之干擾。