



# PhotoKey

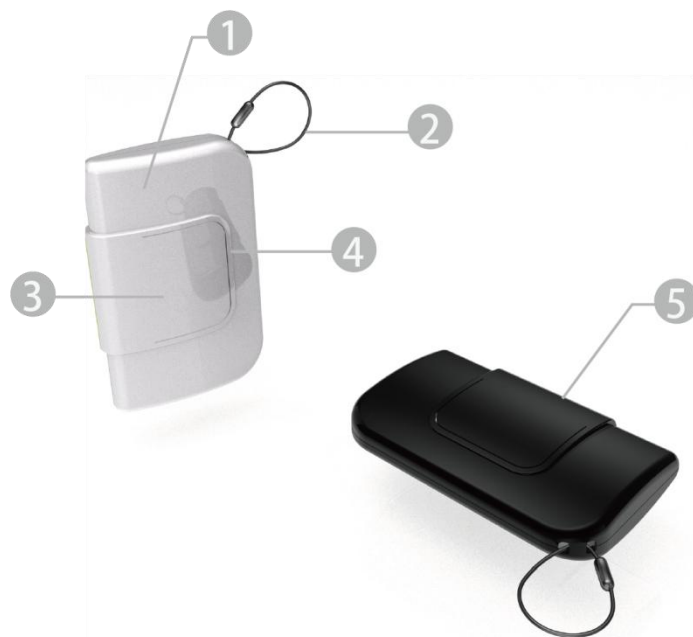
## Quick User Guide



Add: 12F, NO.81, Sec.1, Hsin Tai Wu Rd., Xizhi Dist., New Taipei City, Taiwan 221  
Tel: +886 2 86984245 Fax: +886 2 86984108



# PhotoKey



## Contents

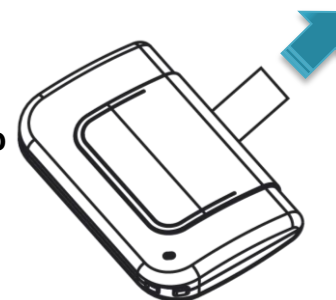
1. PhotoKey (Coin Battery CR2032 including)
2. Key Hanger

## Getting to know the PhotoKey

3. Action Button (For Pairing/Alarm/Capture)
4. Buzzer
5. Battery Holder

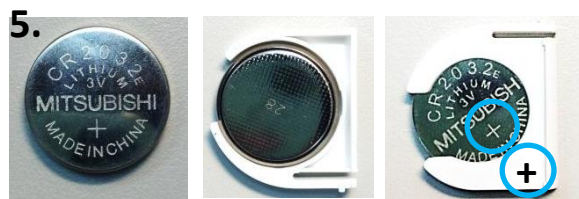
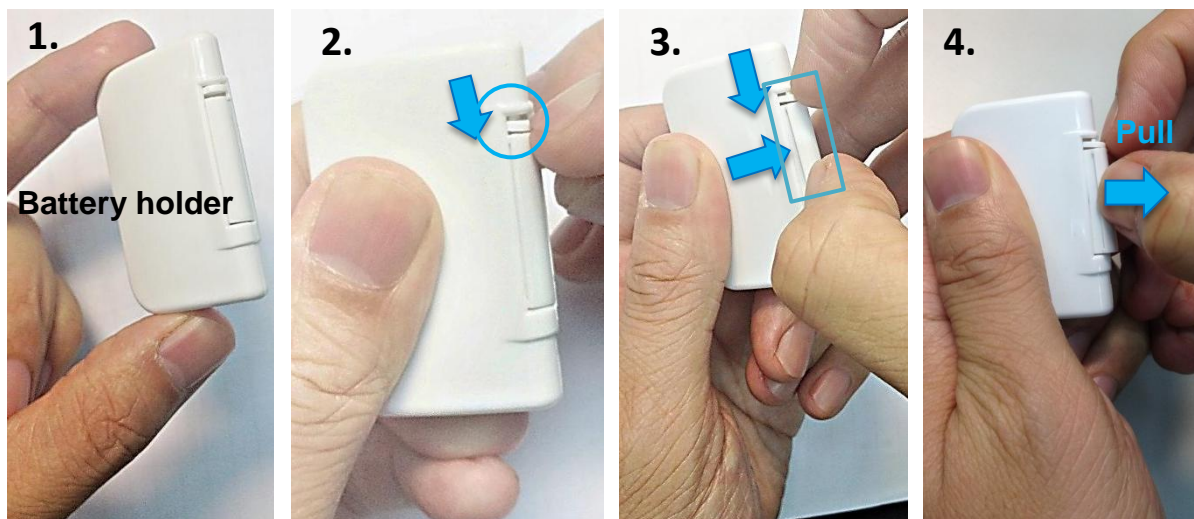
### **For first time using :**

**Please take out battery insulating strip from PhotoKey.**

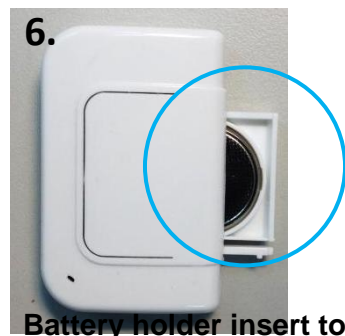




# How to replace battery



**Into the battery with + terminal facing down to battery holder.**



**Battery holder insert to front of PhotoKey**

## Warning:



Positive battery terminal have to face down in battery holder.  
Please follow instruction step 5.




Battery holder is reverse.  
Please follow instruction step 5 and 6.

Add: 12F, NO.81, Sec.1, Hsin Tai Wu Rd., Xizhi Dist., New Taipei City, Taiwan 221  
Tel: +886 2 86984245 Fax: +886 2 86984108



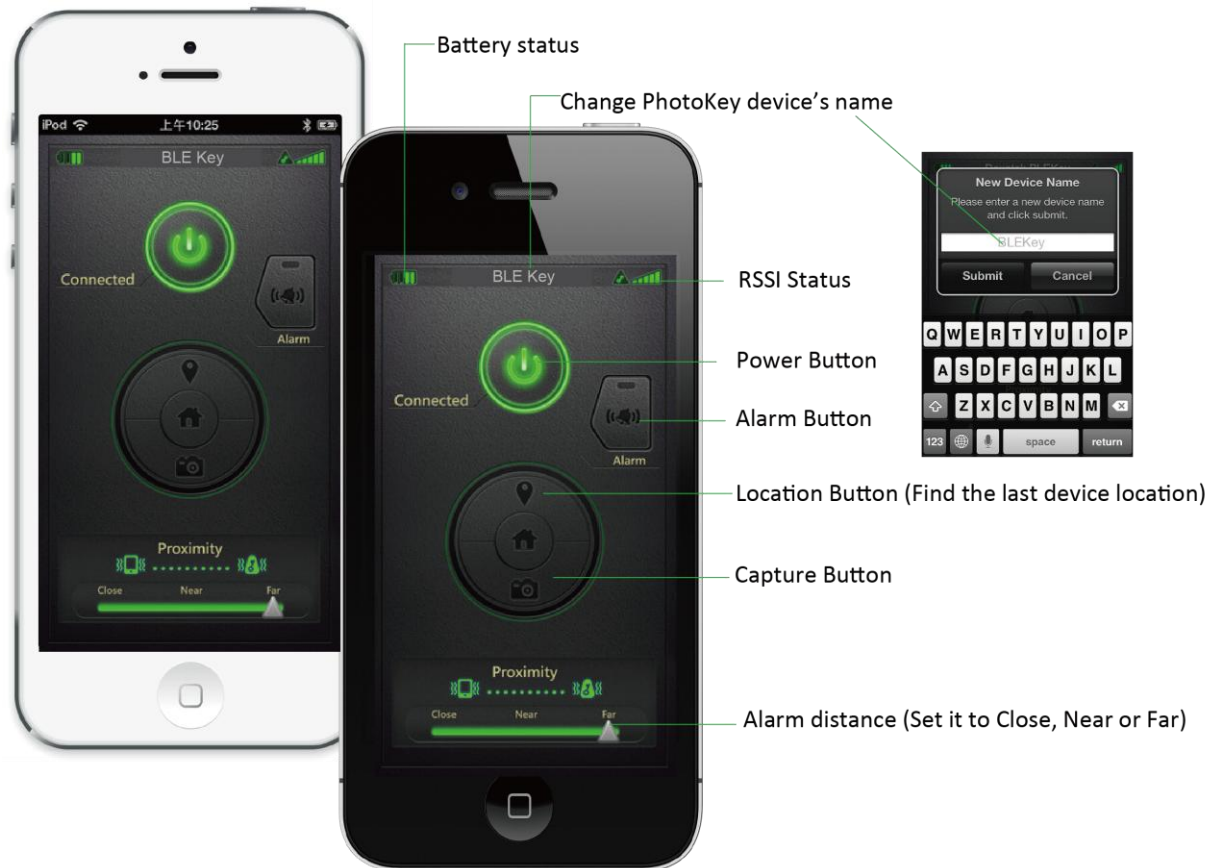
# How to pairing



7. Please download “KeyGuard”  App first from Apple Store.
8. Open the “KeyGuard” App on idevice.
9. App will pop up message and click setting then Bluetooth turned on. And access “KeyGuard” App again.
10. Press both power button and Action Button on PhotoKey until PhotoKey have a beep sound.
11. It will show “Connected” that stands for pairing successful.



# Operating KeyGuard App



## System Requirement

- iPhone 4S or above
- iPhone 5 or above
- iPad 3 or above
- iPad 4 or above
- iPad mini or above
- iPod touch 5 or above

**This App requires iDevices that support BlueTooth 4.0**



# How to work PhotoKey



Alarm Mode: Distance triggered alarm system that makes an alarm if your PhotoKey and iPhone get separated.

Distance Alert trigger

Attach the PhotoKey to your key chain. Keep the KeyGuard app to run in the background on your iPhone/iPad. Anytime the PhotoKey and your iPhone/iPad are separated beyond the protection distance setting (Close/Near/Far), the Distance Alert will be triggered and an alarm will sound on the PhotoKey and the KeyGuard App on the iPhone/iPad.

NOTE: Actual performance depends on user's environment



Alert message



Alarm distance (Set it to Close, Near or Far)

- Close : about 5 meters
- Near : about 20 meters
- Far : about up to 50 meters range

NOTE: Actual performance depends on user's environment

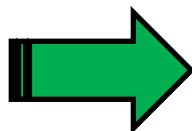


# How to work PhotoKey

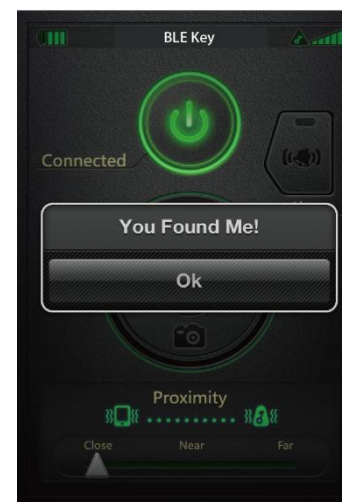


## Find Your iPhone or iPad

If you want to find your iPhone or iPad and please press Action button on PhotoKey.  
The KeyGuard App will be beeping about 10 seconds and show Alert message.



Alert message



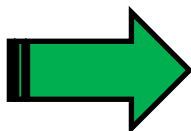


# How to work PhotoKey



## Find Your PhotoKey

If you want to find your PhotoKey and please press alarm button on KeyGurard App.  
Then your PhotoKey will beeping about 10 seconds.



Add: 12F, NO.81, Sec.1, Hsin Tai Wu Rd., Xizhi Dist., New Taipei City, Taiwan 221  
Tel: +886 2 86984245 Fax: +886 2 86984108



# How to work PhotoKey



## Last Location

You can find your last device's location. When your last device disconnect with keychain, you can press location icon. Then you'll get your device's location.



Location Button  
(Search the last device location)



Enable location function

Add: 12F, NO.81, Sec.1, Hsin Tai Wu Rd., Xizhi Dist., New Taipei City, Taiwan 221  
Tel: +886 2 86984245 Fax: +886 2 86984108



# How to work PhotoKey



## Capture

- Break through non-stop snapshot feature
- Fast remote control camera shooting
- One click control flip front and back camera



Add: 12F, NO.81, Sec.1, Hsin Tai Wu Rd., Xizhi Dist., New Taipei City, Taiwan 221  
Tel: +886 2 86984245 Fax: +886 2 86984108



# Federal Communication Commission Interference Statement

This equipment has been tested and found to comply with the limits for a Class B digital device, pursuant to Part 15 of the FCC Rules. These limits are designed to provide reasonable protection against harmful interference in a residential installation.

This equipment generates, uses and can radiate radio frequency energy and, if not installed and used in accordance with the instructions, may cause harmful interference to radio communications. However, there is no guarantee that interference will not occur in a particular installation. If this equipment does cause harmful interference to radio or television reception, which can be determined by turning the equipment off and on, the user is encouraged to try to correct the interference by one of the following measures:

- . Reorient or relocate the receiving antenna.
- . Increase the separation between the equipment and receiver.
- . Connect the equipment into an outlet on a circuit different from that to which the receiver is connected.
- . Consult the dealer or an experienced radio/TV technician for help.

This device complies with Part 15 of the FCC Rules. Operation is subject to the following two conditions:

(1) This device may not cause harmful interference, and (2) This device must accept any interference received, including interference that may cause undesired operation.

***FCC Caution:*** To assure continued compliance, any changes or modifications not expressly approved by the party responsible for compliance could void the user's authority to operate this equipment. (Example - use only shielded interface cables when connecting to computer or peripheral devices).

## ***FCC Radiation Exposure Statement***

This equipment complies with FCC RF radiation exposure limits set forth for an uncontrolled environment.

This transmitter must not be co-located or operating in conjunction with any other antenna or transmitter.