

**PTM 535U**Valid from: **31.08.2020**  
Creator: **D. Purkovic**

---

**General**

Current Step Code version und state is defined in:

„C21\_PTM535U\_Cover\_sheet\_manufacturing\_data.docx“

**Label for packaging**

The label should be based on labeling requirement document „Etikett für Verpackung\_KV0001x“.

**Specific guidelines on the content:**

Field 05, Product name:	PTM 535U
Field 06, Revision (Step Code):	See 'C21_PTM535U_Cover_sheet_manufacturing_data.docx'
Field 07, Order code:	S3051-A535
Field 08, State code:	See 'C21_PTM535U_Cover_sheet_manufacturing_data.docx'
Field 10, Quantity:	See 'C21_PTM535U_Cover_sheet_manufacturing_data.docx'

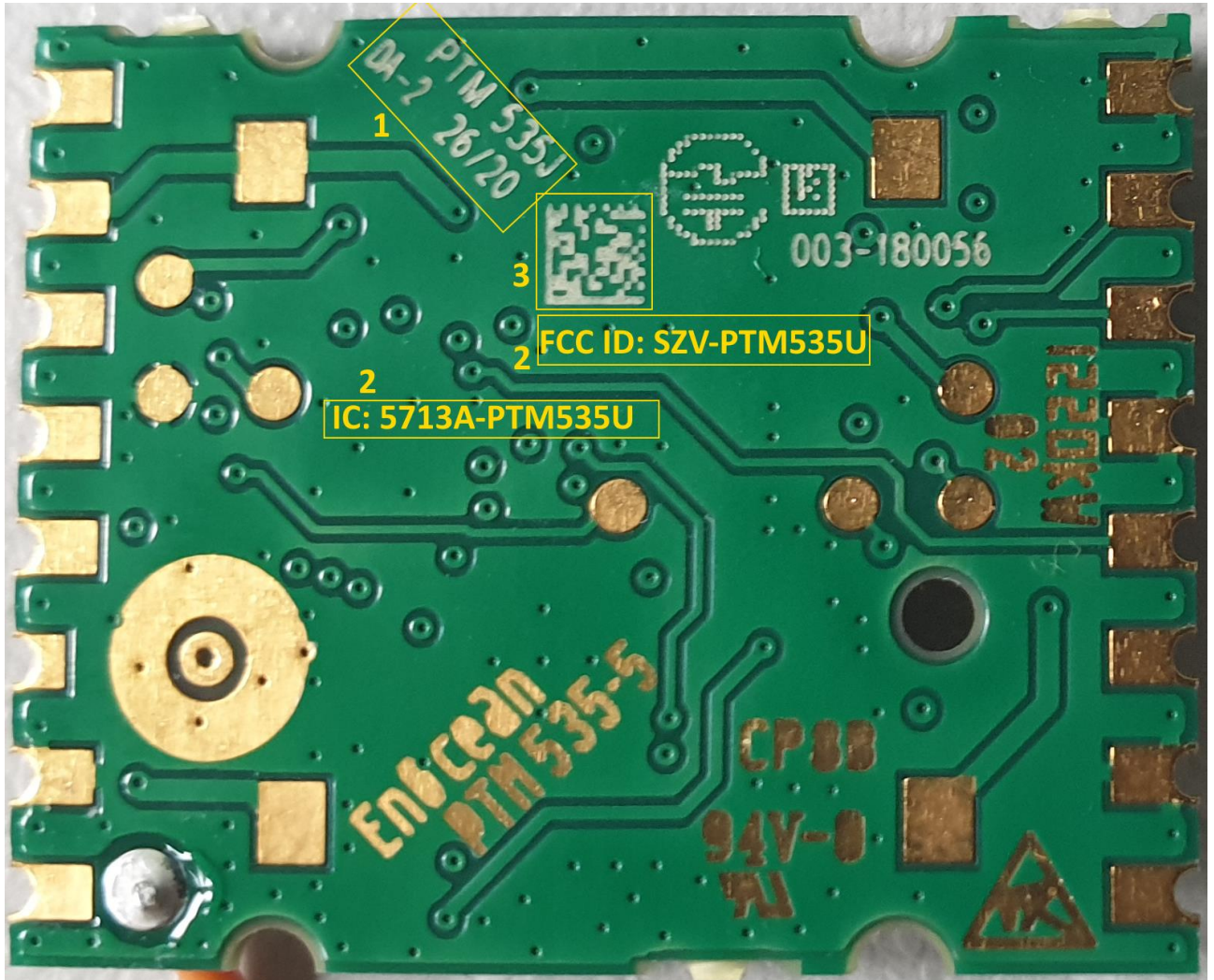
**Laser marking**

PCB assembler lasers bottom side of the PCB (in yellow reserved area) as shown in Figure 1 below:

**PTM 535U**

Valid from: **31.08.2020**

Creator: **D. Purkovic**



**Figure 1. Area for laser markings on the bottom side of the PCB**

**Table 1. Content of PCB markings**

Field	Content	Description
1	MODEL: PTM 535U <i>xy</i> A535- <i>z</i> <i>dc</i>	Step Code „ <i>xy</i> “ (z.B. DA) State Code „- <i>z</i> “ (z.B. -2); Date Code „ <i>dc</i> “ (z.B. 42/17)
2	FCC number and IC number	FCC certification number: "FCC ID: SZV-PTM535U" IC certification number: "IC: 5713A-PTM535U"
3	DMC	Data Matrix Code