

**PTM 215U**

Valid from: **03.02.2021**

Creator: **D. Draksas**

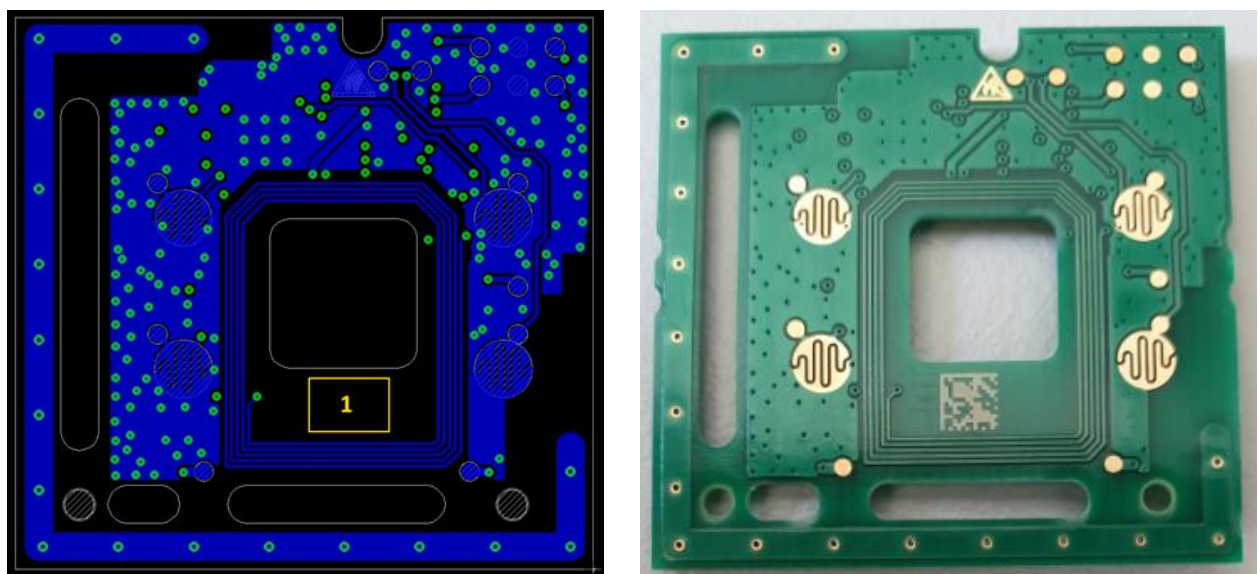
**1. General**

Current Step Code version und state is defined in:

"C71-PTM\_215U\_NEXT\_Cover\_sheet\_manufacturing\_data.docx"

**2. Laser marking**

PCB assembler lasers bottom side of the PCB (in yellow rectangle) as shown below:



**Figure 1. Area for the laser markings on the bottom side of the PCB**

Only DMC code should be lasered on the PCB, all the rest of the content will be part of the label placed on the plastic housing (Figure 2).

**Table 1. Content of the PCB markings**

Field	Content	Description
1	DMC	Data Matrix Code

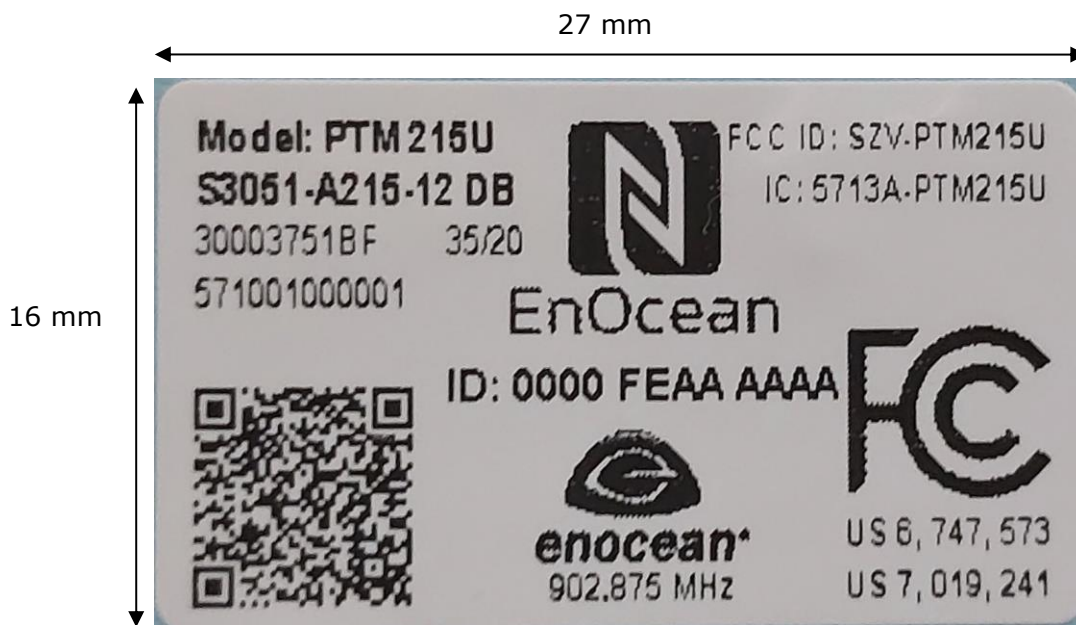
**PTM 215U**

Valid from: **03.02.2021**  
 Creator: **D. Draksas**

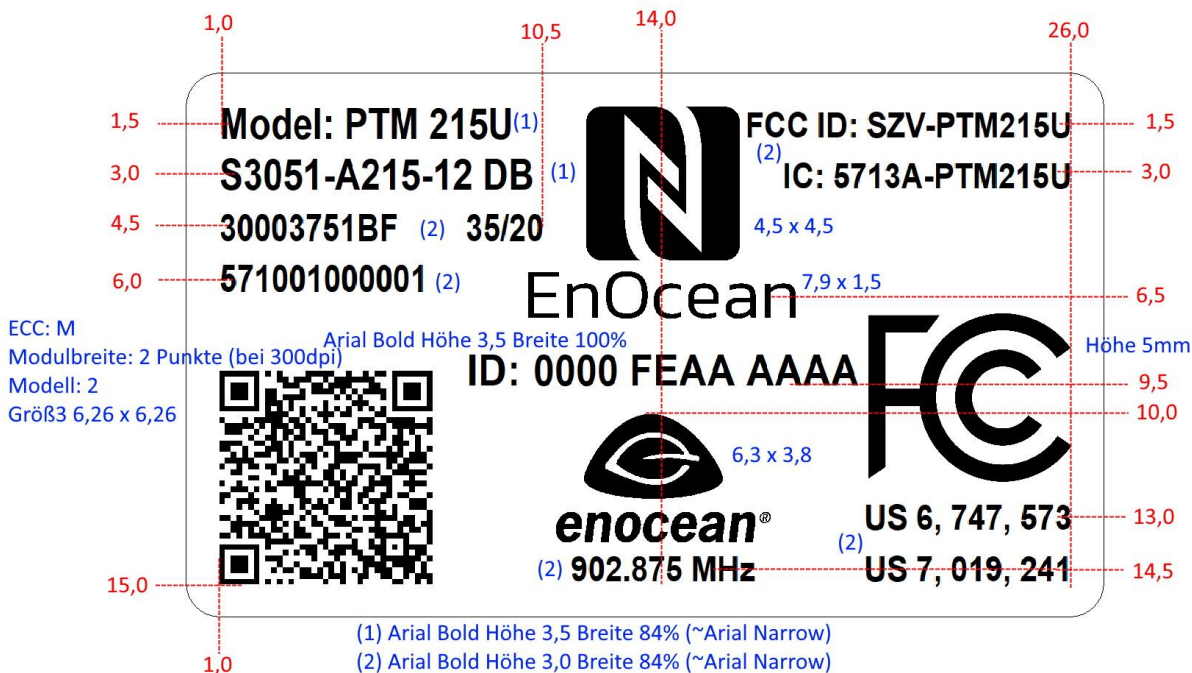
**3. Label on the PTM module housing**

Material des Klebeschild entsprechend „KV0001x- Absatz 5.1. Material und Beständigkeit“

Aufkleber 27x16 weiß PE, Katek Artikel-Nr.: 93100394BF



**Figure 2. PTM 215U label example.**



**Figure 3. Positions of the elements with the defined dimensions in mm.**

**PTM 215U**

Valid from: **03.02.2021**

Creator: **D. Draksas**

Label Position on the device



**PTM 215U**

Valid from: **03.02.2021**  
 Creator: **D. Draksas**

FCC ID & IC Number to be used:

**FCC ID: SZV-PTM215U**

**IC: 5713A-PTM215U**

**Format of the elements:**

**All the information in the label has to be written in the bold font!**

- (1) Arial Bold 3,5 Width 84% (this is like Arial Narrow)
- (2) Arial Bold 3,0 Width 84% (this is like Arial Narrow)
- FCC Mark; Height 5 mm
- ID font and size: Arial Bold 3,5 Width 100%



- EnOcean Alliance Logo: **enocean**<sup>®</sup> (from .jpg file, 6.3 mm x 3.8 mm)

- EnOcean name: **EnOcean** (from .jpg file, size 7.9 mm x 1.5 mm).

- QR-Code Version: 5 (37x37 pixel)
- QR-Code Type: **Model 2**
- Error Correction Level: M (15% error correction)
- Mode: Alphanumeric Mode
- Character Capacity: 122
- Free space around the code: 1 mm in all directions
- Size of the QR-Code: 6.26 mm x 6.26 mm

Label shown in Figure 3 among other information contains a QR code with the following data:

**Table 2. QR code content**

Identifier	Length of data	Value
30S	15 characters (12 data)	Static Source Address (hex), 0x0000 + <b>EnOcean Radio ID</b> e.g. 000001500100
+	1 character	Field Separator
13Z	35 characters (32 data)	Security AES key (16 Bytes), generated and specific for each device e.g. 12345678123456781234567812345678
+	1 character	Field Separator

Die in diesem Dokument enthaltenen Informationen sind Eigentum der EnOcean GmbH und als solche vertraulich zu behandeln. Ausnahmen bedürfen der Genehmigung durch autorisierte Mitarbeiter. Kopien dieses Dokumentes, die den anerkannten Verteilungssystemen entnommen wurden, sind unkontrollierte Dokumente, deren Anwendung jegliche Haftung ausschließt.



**PTM 215U**

Valid from: **03.02.2021**

Creator: **D. Draksas**

1P	14 characters (12 data)	Product ID (EnOcean Alliance), e.g. 000B00000055
+	1 character	Field Separator
30P	13 characters (10 data)	Ordering Code (EnOcean module), e.g. S3051-A215
+	1 character	Field Separator
2P	6 characters (4 data)	Step Code - Revision (EnOcean module), e.g. DC22
+	1 character	Field Separator
S	15 characters (2 + 12 data)	Manufacturer recognition, 01 + DMC/Serial Number, e.g. 123456789012
<b>Total: 103 characters</b>		

30S000001500100+13Z12345678123456781234567812345678  
+1P000B00000055+30PS3051-A215+2PDC22+S01123456789012

**Figure 4. QR code content example based on the above table**

**4. Label for packaging**

The label should be based on labeling requirement document:  
„Etikett für Verpackung\_KV0001x“.

Specific guidelines on the content:

**Table 3. Packaging label content**

Field 05 - Product name:	<b>PTM 215U</b>
Field 06 - Revision (Step Code):	Check Manufacturing cover sheet: "C71-PTM_215U_NEXT_Cover_sheet_manufacturing_data.docx"
Field 07 - Order code:	<b>S3051-A215</b>
Field 08 - State code:	Check Manufacturing cover sheet: "C71-PTM_215U_NEXT_Cover_sheet_manufacturing_data.docx"
Field 10 - Quantity:	Check Manufacturing cover sheet: "C71-PTM_215U_NEXT_Cover_sheet_manufacturing_data.docx"