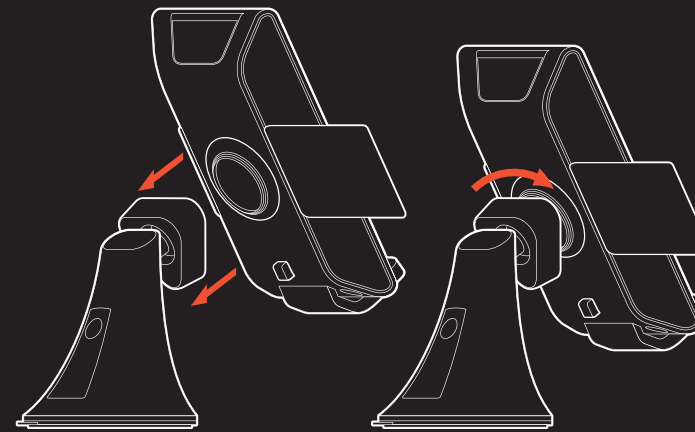


TYLT VU CAR Wireless Charger

BUILT TO TYLT



FCC Information

This equipment has been tested and found to comply with the limits for a Class B digital device, pursuant to Part 15 of the FCC Rules. These limits are designed to provide reasonable protection against harmful interference in a residential installation. This equipment generates, uses and can radiate radio frequency energy and, if not installed and used in accordance with the instructions, may cause harmful interference to radio communications. However, there is no guarantee that interference will not occur in a particular installation. If this equipment does cause harmful interference to radio or television reception, which can be determined by turning the equipment off and on, the user is encouraged to try to correct the interference by one or more of the following measures:

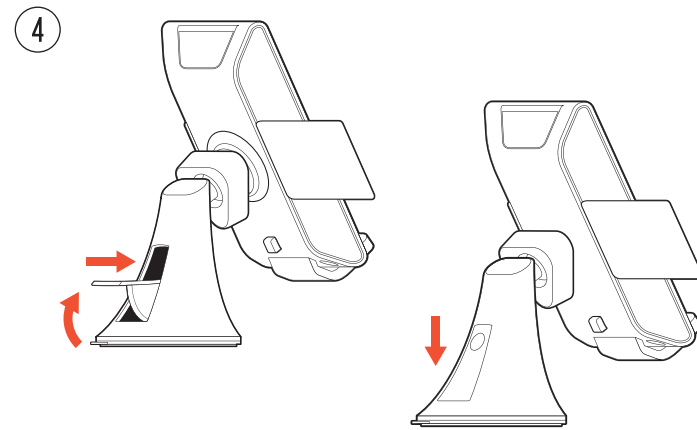
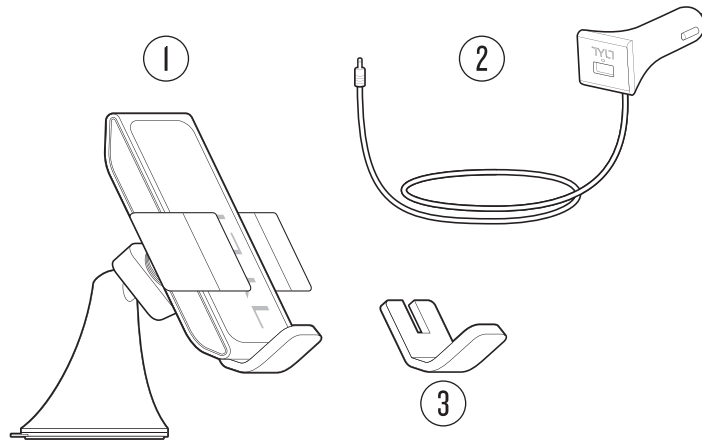
- Reorient or relocate the receiving antenna.
- Increase the separation between the equipment and receiver.
- Connect the equipment into an outlet on a circuit different from that to which the receiver is connected.

Consult the dealer or an experienced radio/TV technician for help. This device complies with Part 15 of the FCC Rules [and with RSS-210 of Industry Canada]. Operation is subject to the following two conditions:

1. This device may not cause harmful interference.
2. This device must accept any interference received, including interference that may cause undesired operation.

To comply with FCC and other RF exposure requirements, please maintain a distance of 20cm between the charger and your body when in use. This transmitter must not be co-located or operating in conjunction with any other antenna or transmitter. Changes or modifications made to this equipment not expressly approved by the manufacturer may void the FCC authorization to operate this equipment.

FCC ID: S2Q-T120



ENG PACKAGE CONTENTS

- 1 Vu Wireless Car Charger
- 2 Vu Power Adapter CLA w/ USB Output
- 3 1X Phone Rest Ledge

4 POSITIONING THE VU

Push in Release Lever Button to release suction cup. Position VU on chosen flat surface and gently press down on base while pushing the Release Lever to the closed position.

5 POWERING THE VU

Insert the included Power Adapter CLA into your vehicle's 12V Cigarette Lighter, then insert the Plug into the Vu Wireless Car Charger. A white LED will illuminate when CLA is powered. The additional USB output will charge an additional smartphone or tablet. **POWERING YOUR QI DEVICE** Place your Qi compatible device on the VU Pad surface to begin charging.

ADJUSTING THE VU

6.1 TENSION NUT - The Tension Nut can be loosened to adjust angle of the Vu Wireless Charger. Tighten when desired angle is achieved.

6.2 GRIPPING ARMS - Press down on the Gripping Arms Release Button to expand the gripping arms. Gently push arms inward toward the center to secure to your Qi compatible device.

6.3 REST LEDGE - To accommodate larger device sizes, the rest ledge can be repositioned. Press the Foot Release Button located on the rear of the Vu to release Phone Rest Ledge. The ledge can be pulled down, pushed up, or removed entirely.

SPECIFICATIONS - Input: 12V, .75A - Output: 5V, 1A

7 LED INDICATOR/TROUBLESHOOTING

While in Standby mode, the LED is OFF. Solid green LED indicates the VU is delivering full power. Under any type of error condition, the green LED will begin to blink. A fast blink indicates a fault. Remove the phone and place it back on the VU. If problem persists, unplug the power adapter from the power source and reconnect it. If the green LED is on but the device does not charge, there may be a metal object near the coils. Remove the device and check for foreign metal objects and place device back on the car mount. This is a safety feature and normal operation.

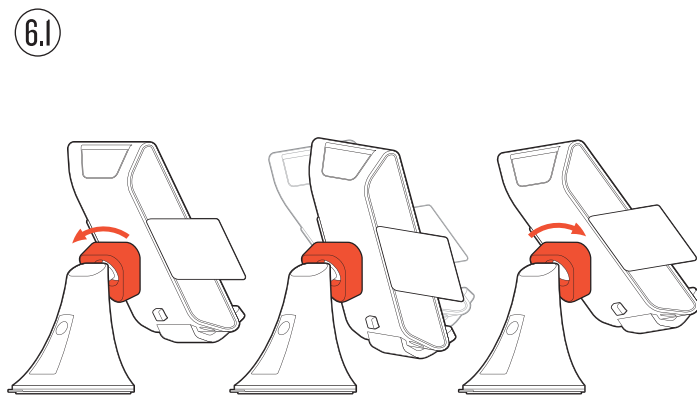
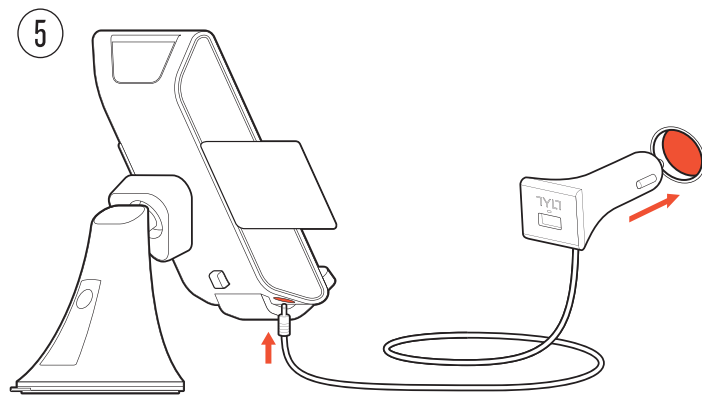
CARE AND MAINTENANCE

GENERAL: Keep Device Dry. Do NOT expose the device to liquids. If device gets wet, immediately unplug it and allow it to dry. Do not disassemble or attempt repair. Do not store the device in high or low temperatures.

SUCTION CUP: Place Suction Cup Base on dry, clean, flat surfaces. The sticky suction will adhere to

windshields and most dashboards. To remove, push in the Release Lever Button, then pull up on the Suction Cup Pull Tab. To clean the sticky suction cup, remove the base from the phone mount. Run the sticky suction cup under warm tap water. You may also use a mild soap and gently rub off debris. Remove any residue and let it air dry.

CAUTION
The Vu Wireless Car Charger is for charging wireless charging enabled and Qi™ Charging Standard compatible smartphones only. The charging unit should only be used at normal indoor room conditions. The Vu Wireless Car Charger may become hot during charging. Avoid direct contact with highly flammable materials.



FRA PACKAGE CONTENTS

- 1 Vu Wireless Car Charger
- 2 Vu Power Adapter CLA w/ USB Output
- 3 1X Phone Rest Ledge

4 POSITIONING THE VU

Push in Release Lever Button to release suction cup. Position VU on chosen flat surface and gently press down on base while pushing the Release Lever to the closed position.

5 POWERING THE VU

Insert the included Power Adapter CLA into your vehicle's 12V Cigarette Lighter, then insert the Plug into the Vu Wireless Car Charger. A white LED will illuminate when CLA is powered. The additional USB output will charge an additional smartphone or tablet. **POWERING YOUR QI DEVICE** Place your Qi compatible device on the VU Pad surface to begin charging.

ADJUSTING THE VU

6.1 TENSION NUT - The Tension Nut can be loosened to adjust angle of the Vu Wireless Charger. Tighten when desired angle is achieved.

6.2 GRIPPING ARMS - Press down on the Gripping Arms Release Button to expand the gripping arms. Gently push arms inward toward the center to secure to your Qi compatible device.

6.3 REST LEDGE - To accommodate larger device sizes, the rest ledge can be repositioned. Press the Foot Release Button located on the rear of the Vu to release Phone Rest Ledge. The ledge can be pulled down, pushed up, or removed entirely.

SPECIFICATIONS - Input: 12V, .75A - Output: 5V, 1A

7 LED INDICATOR/TROUBLESHOOTING

While in Standby mode, the LED is OFF. Solid green LED indicates the VU is delivering full power. Under any type of error condition, the green LED will begin to blink. A fast blink indicates a fault. Remove the phone and place it back on the VU. If problem persists, unplug the power adapter from the power source and reconnect it. If the green LED is on but the device does not charge, there may be a metal object near the coils. Remove the device and check for foreign metal objects and place device back on the car mount. This is a safety feature and normal operation.

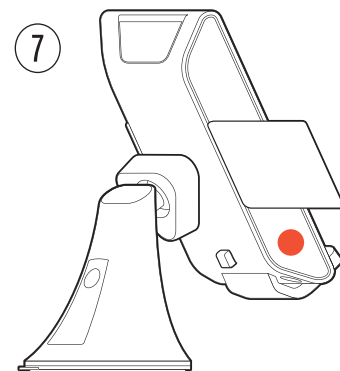
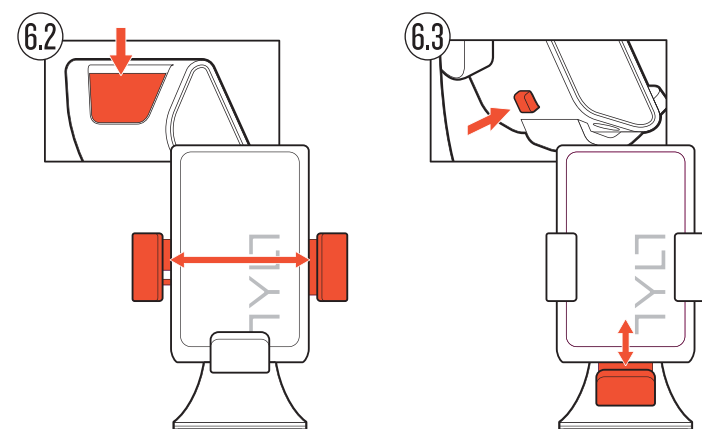
CARE AND MAINTENANCE

GENERAL: Keep Device Dry. Do NOT expose the device to liquids. If device gets wet, immediately unplug it and allow it to dry. Do not disassemble or attempt repair. Do not store the device in high or low temperatures.

SUCTION CUP: Place Suction Cup Base on dry, clean, flat surfaces. The sticky suction will adhere to

windshields and most dashboards. To remove, push in the Release Lever Button, then pull up on the Suction Cup Pull Tab. To clean the sticky suction cup, remove the base from the phone mount. Run the sticky suction cup under warm tap water. You may also use a mild soap and gently rub off debris. Remove any residue and let it air dry.

CAUTION
The Vu Wireless Car Charger is for charging wireless charging enabled and Qi™ Charging Standard compatible smartphones only. The charging unit should only be used at normal indoor room conditions. The Vu Wireless Car Charger may become hot during charging. Avoid direct contact with highly flammable materials.



For more information on the Qi, wireless charging, Qi™ Charging Standard and a list of compatible smartphones, please visit: www.TYLT.com/VU

©2014 TYLT. All rights reserved. TYLT® and the TYLT® logo are registered trademarks of Foreign Trade Corp. Other marks are the property of their respective owners. ICXXXX

ITA PACKAGE CONTENTS

- 1 Vu Wireless Car Charger
- 2 Vu Power Adapter CLA w/ USB Output
- 3 1X Phone Rest Ledge

4 POSITIONING THE VU

Push in Release Lever Button to release suction cup. Position VU on chosen flat surface and gently press down on base while pushing the Release Lever to the closed position.

5 POWERING THE VU

Insert the included Power Adapter CLA into your vehicle's 12V Cigarette Lighter, then insert the Plug into the Vu Wireless Car Charger. A white LED will illuminate when CLA is powered. The additional USB output will charge an additional smartphone or tablet. **POWERING YOUR QI DEVICE** Place your Qi compatible device on the VU Pad surface to begin charging.

ADJUSTING THE VU

6.1 TENSION NUT - The Tension Nut can be loosened to adjust angle of the Vu Wireless Charger. Tighten when desired angle is achieved.

6.2 GRIPPING ARMS - Press down on the Gripping Arms Release Button to expand the gripping arms. Gently push arms inward toward the center to secure to your Qi compatible device.

6.3 REST LEDGE - To accommodate larger device sizes, the rest ledge can be repositioned. Press the Foot Release Button located on the rear of the Vu to release Phone Rest Ledge. The ledge can be pulled down, pushed up, or removed entirely.

SPECIFICATIONS - Input: 12V, .75A - Output: 5V, 1A

7 LED INDICATOR/TROUBLESHOOTING

While in Standby mode, the LED is OFF. Solid green LED indicates the VU is delivering full power. Under any type of error condition, the green LED will begin to blink. A fast blink indicates a fault. Remove the phone and place it back on the VU. If problem persists, unplug the power adapter from the power source and reconnect it. If the green LED is on but the device does not charge, there may be a metal object near the coils. Remove the device and check for foreign metal objects and place device back on the car mount. This is a safety feature and normal operation.

CARE AND MAINTENANCE

GENERAL: Keep Device Dry. Do NOT expose the device to liquids. If device gets wet, immediately unplug it and allow it to dry. Do not disassemble or attempt repair. Do not store the device in high or low temperatures.

SUCTION CUP: Place Suction Cup Base on dry, clean, flat surfaces. The sticky suction will adhere to

windshields and most dashboards. To remove, push in the Release Lever Button, then pull up on the Suction Cup Pull Tab. To clean the sticky suction cup, remove the base from the phone mount. Run the sticky suction cup under warm tap water. You may also use a mild soap and gently rub off debris. Remove any residue and let it air dry.

CAUTION
The Vu Wireless Car Charger is for charging wireless charging enabled and Qi™ Charging Standard compatible smartphones only. The charging unit should only be used at normal indoor room conditions. The Vu Wireless Car Charger may become hot during charging. Avoid direct contact with highly flammable materials.