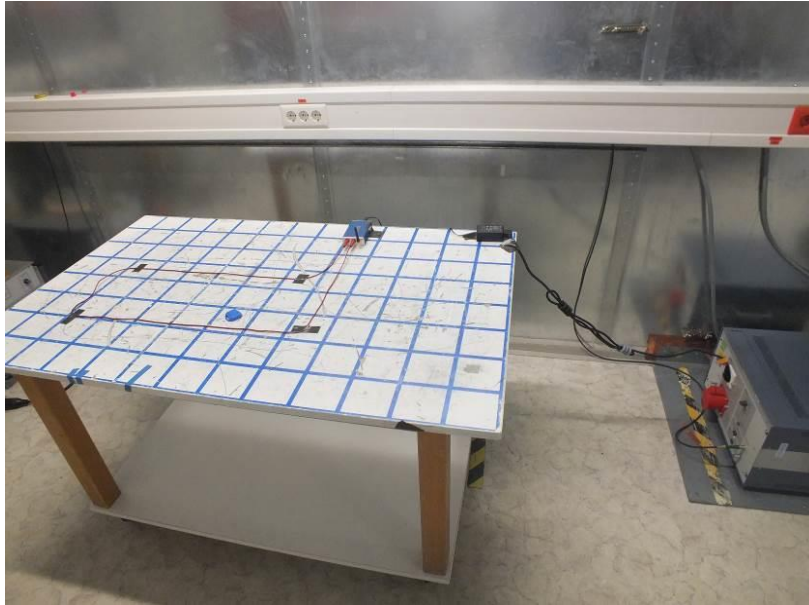


FCC ID: SZO-RR02
IC: 20465-RR02

Test setup pictures

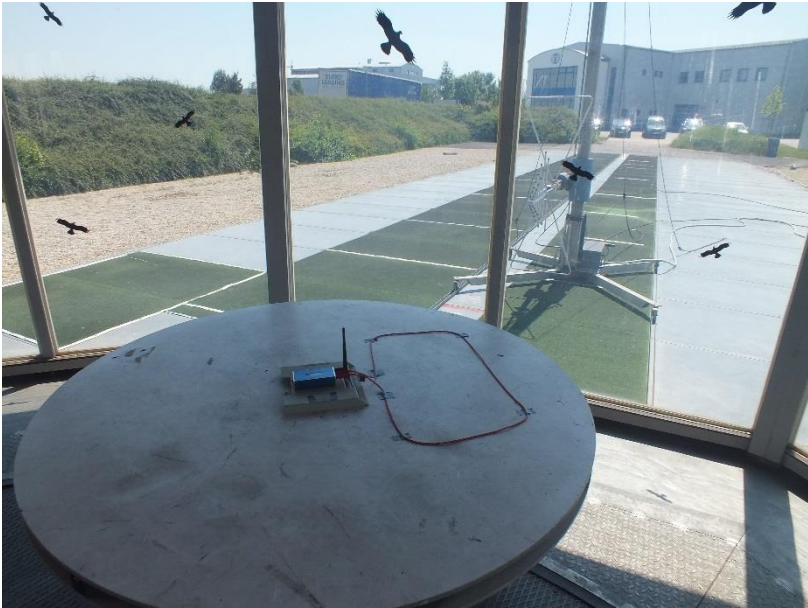
Conducted emission



Radiated emission 9kHz – 30 MHz



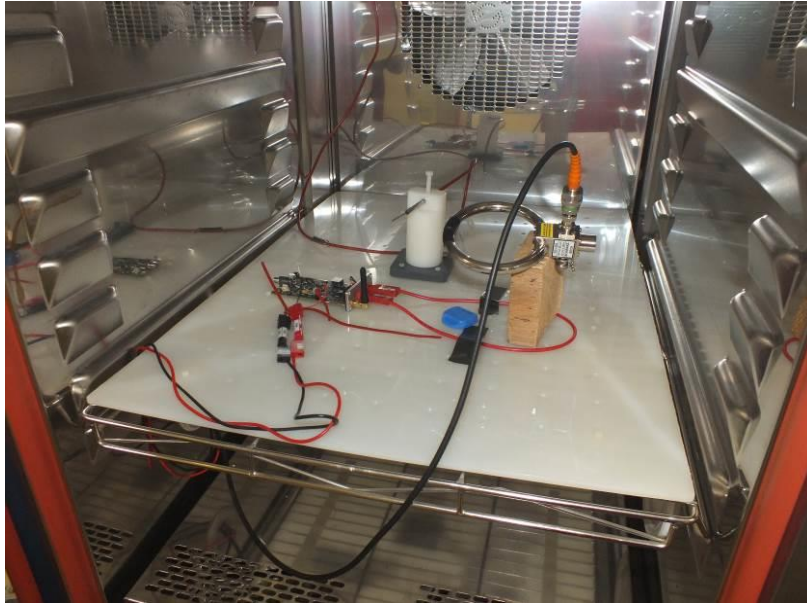
Radiated emission 30MHz – 1000 MHz



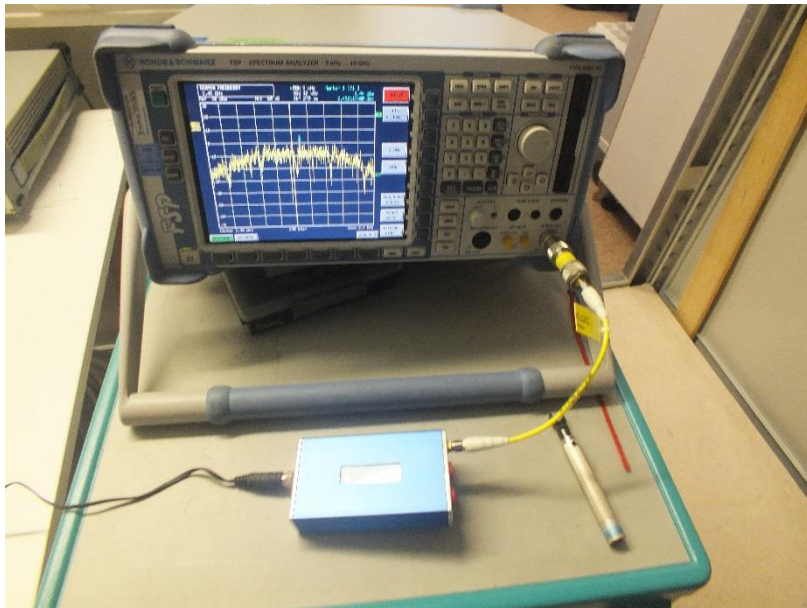
Radiated emission > 1000 MHz



Emission bandwidth (125kHz)



Emission bandwidth (2.4GHz), power spectral density



Peak conducted output power

