

ANTENNA GAIN/PATTERN TEST REPORT

FOR

Product Name: Bluetooth Stereo Headset Antenna

Antenna Type: Chip Antenna

Model Name: GSH300

Brand Name: GoerTek Electronics

Report No.: EF/2005/B0010-01

Issue Date: Nov. 30, 2005

Prepared for GoerTek Electronics
Chnangye Building, Hi-Tech Industrial
Park, Qingdao, Shandong 266061, China

Prepared by SGS Taiwan Ltd.
No. 134, Wu Kung Rd., Wuku Industrial
Zone, Taipei County, Taiwan.

Note: This report shall not be reproduced except in full, without the written approval of SGS Taiwan Ltd. This document may be altered or revised by SGS Taiwan Ltd. personnel only, and shall be noted in the revision section of the document.

The results shown in this test report refer only to the sample(s) tested unless otherwise stated. This test report cannot be reproduced, except in full, without prior written permission of the Company.

Table of Contents

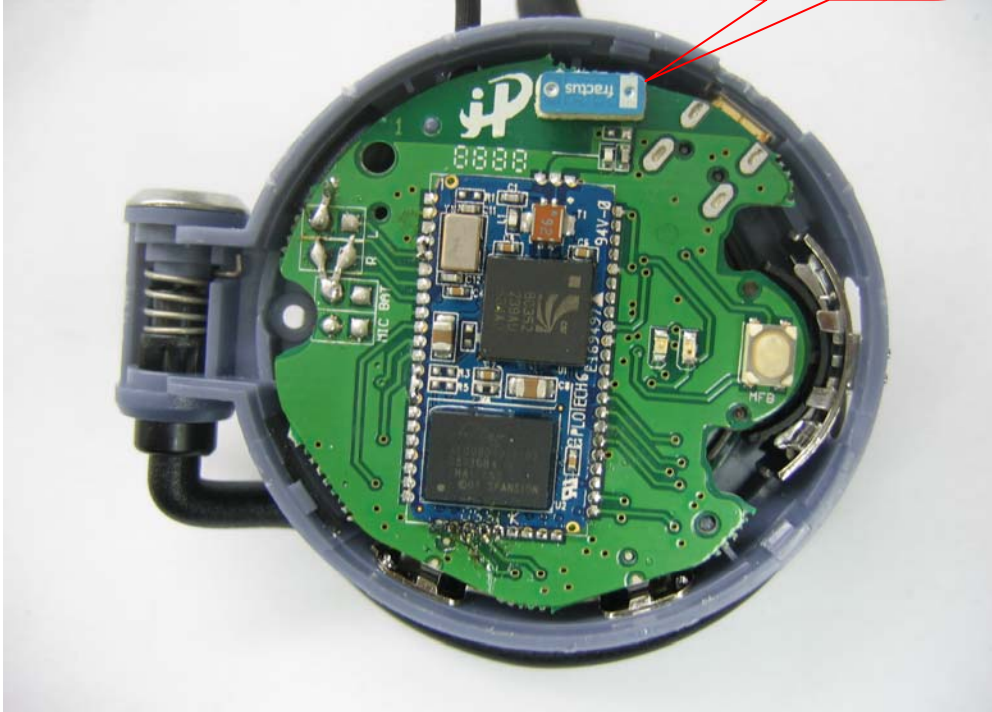
1. Antenna Photos	3
2. Antenna Gain	4
3. Antenna Pattern	4
4. Test Equipment Used.....	4

The results shown in this test report refer only to the sample(s) tested unless otherwise stated. This test report cannot be reproduced, except in full, without prior written permission of the Company.

1. Antenna Photos

Figure 1

Chip Antenna



The results shown in this test report refer only to the sample(s) tested unless otherwise stated. This test report cannot be reproduced, except in full, without prior written permission of the Company.

2. Antenna Gain

Frequency	= 2450 MHz
Antenna Gain	= 0.85dBi

3. Antenna Pattern

Figure 3. Radiation pattern of H-plane at co-polarization.

Figure 4. Radiation pattern of H-plane at cross-polarization

Figure 5. Radiation pattern of E1-plane at co-polarization

Figure 6. Radiation pattern of E1-plane at cross-polarization

Figure 7. Radiation pattern of E2-plane at co-polarization

Figure 8. Radiation pattern of E2-plane at cross-polarization

4. Test Equipment Used

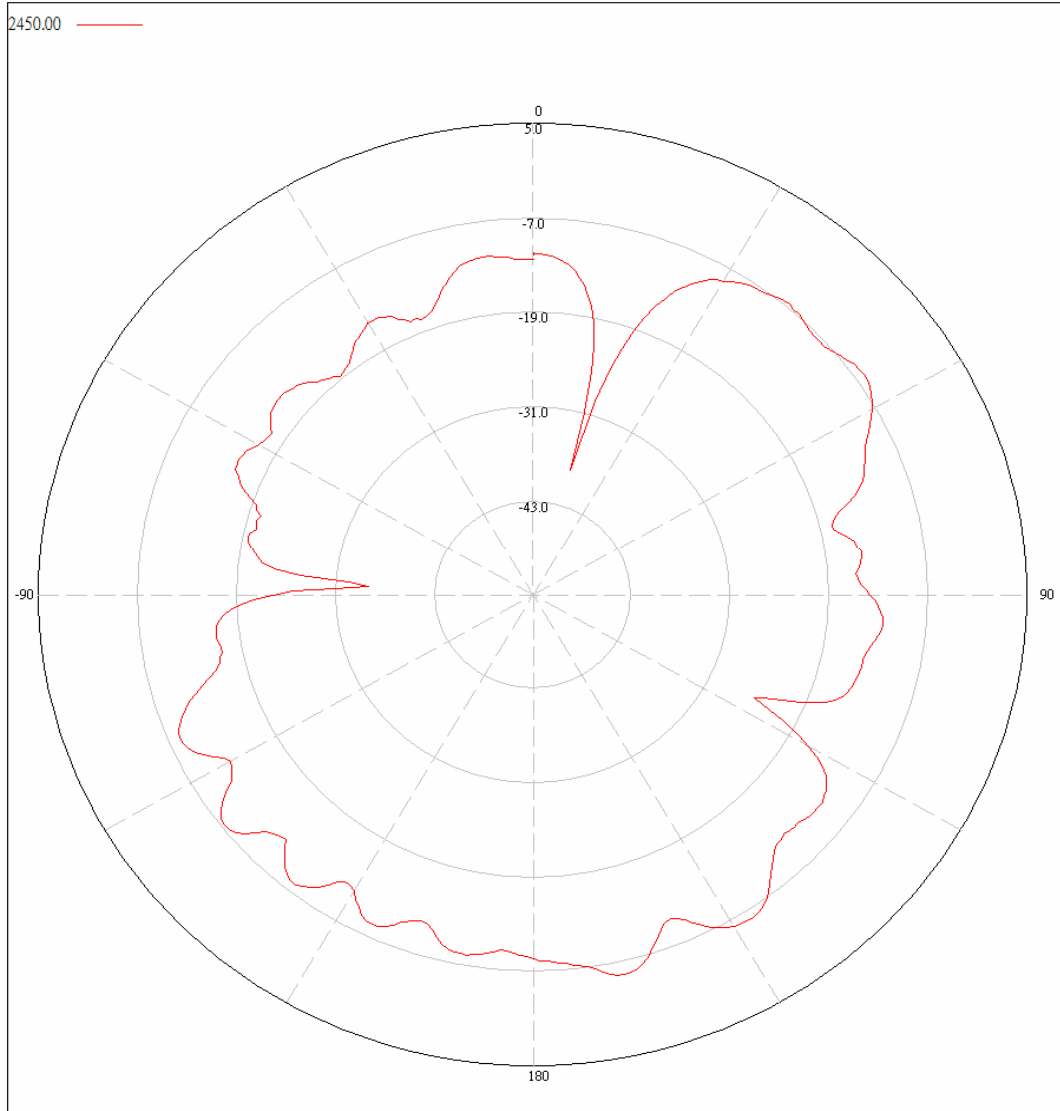
11m X6m X6m Full Anechoic Chamber Test Site					
EQUIPMENT TYPE	MFR	MODEL NUMBER	SERIAL NUMBER	LAST CAL.	CAL DUE.
Network Analyzer	Agilent	8714ET	US41442815	11/01/2005	10/31/2006
Full anechoic chamber	TDK	N/A	N/A	05/14/2005	05/13/2006

The results shown in this test report refer only to the sample(s) tested unless otherwise stated. This test report cannot be reproduced, except in full, without prior written permission of the Company.

Figure 3

SGS Taiwan Limited Network Analyzer Testing Report

DATE: 2006-02-21 15:40
 CLIENT:
 EUT: BT
 OPERATOR:
 FileName: c:\Documents and Settings\willis_chen\My Documents\antenna\歌爾GSH-300\H-H.csv



MEMO: memoa
 memob
 memoc

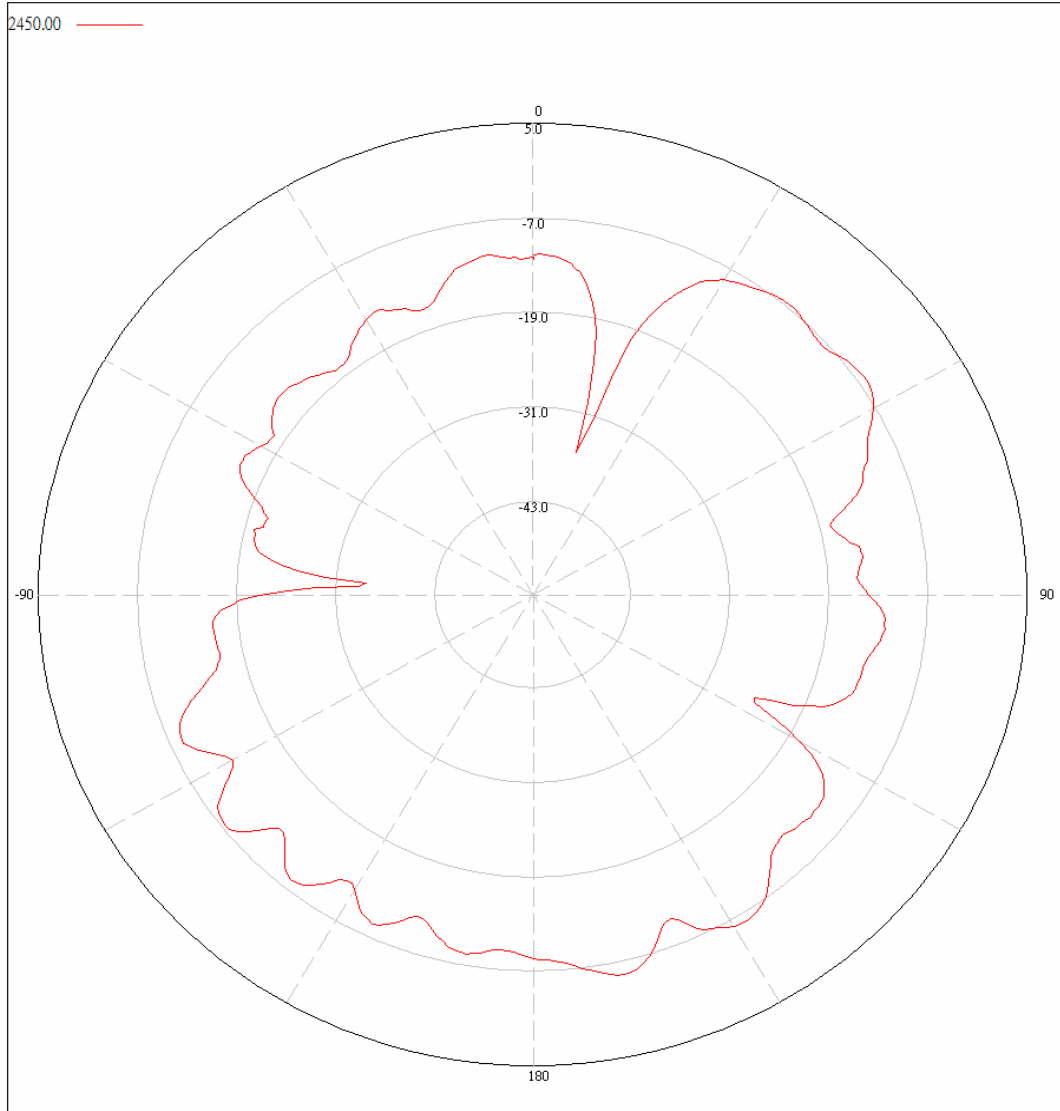
Frequency	2450.0	2600.0
Max.	-5.44	-16.10
Max. Angle	167.0	359.0
Avr.	-10.94	-17.40

The results shown in this test report refer only to the sample(s) tested unless otherwise stated. This test report cannot be reproduced, except in full, without prior written permission of the Company.

Figure 4

SGS Taiwan Limited Network Analyzer Testing Report

DATE: 2006-02-21 15:42
 CLIENT:
 EUT: BT
 OPERATOR:
 FileName: c:\Documents and Settings\willis_chen\My Documents\antenna\歌爾GSH-300\H-V.csv



MEMO: memoa
 memob
 memoc

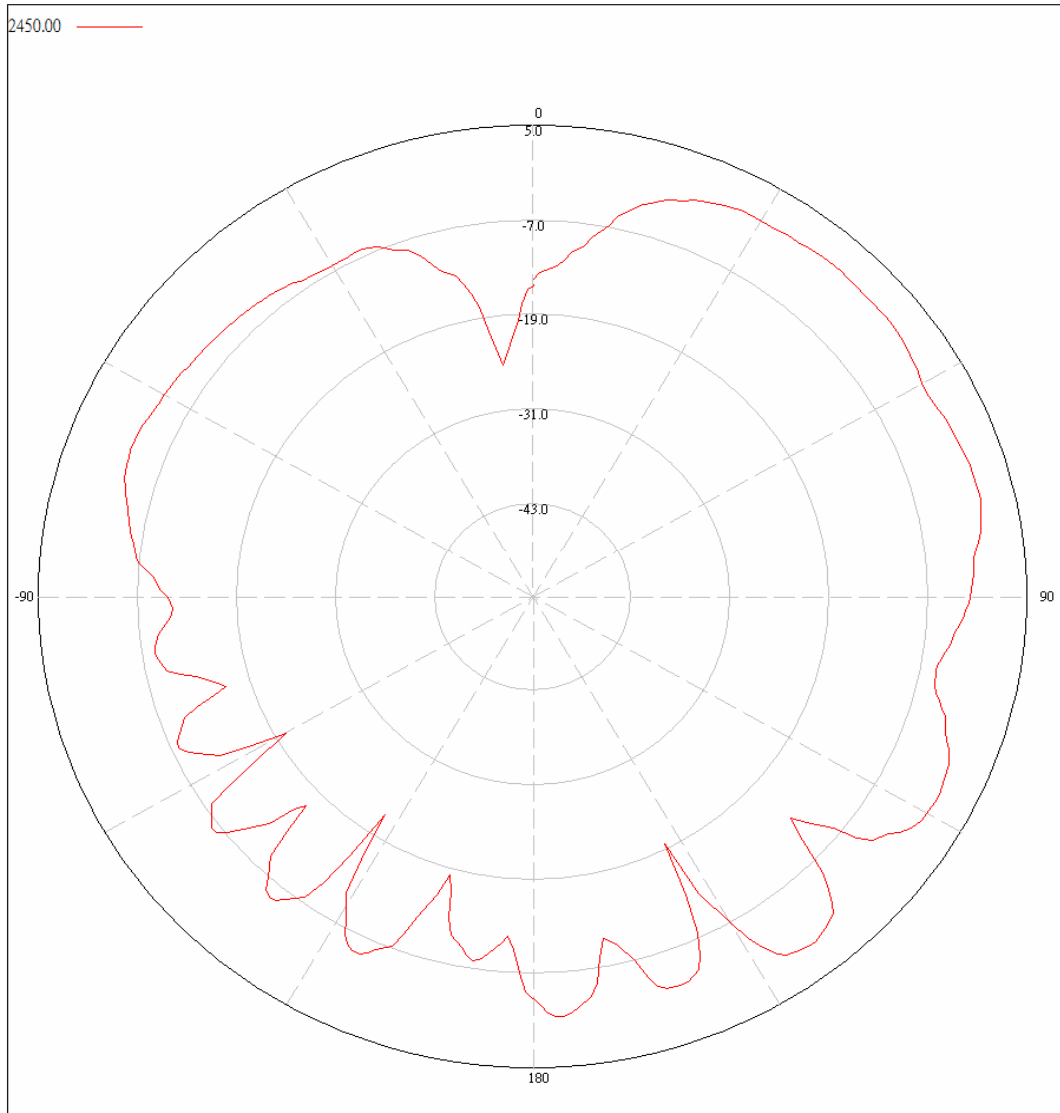
Frequency	2450.0	2600.0
Max.	-5.54	-6.20
Max. Angle	168.0	42.0
Avr.	-11.03	-10.81

The results shown in this test report refer only to the sample(s) tested unless otherwise stated. This test report cannot be reproduced, except in full, without prior written permission of the Company.

Figure 5

SGS Taiwan Limited Network Analyzer Testing Report

DATE: 2006-02-21 15:46
 CLIENT:
 EUT: BT
 OPERATOR:
 FileName: c:\Documents and Settings\willis_chen\My Documents\antenna\歌爾GSH-300\E1-H.csv



MEMO: memoa
 memob
 memoc

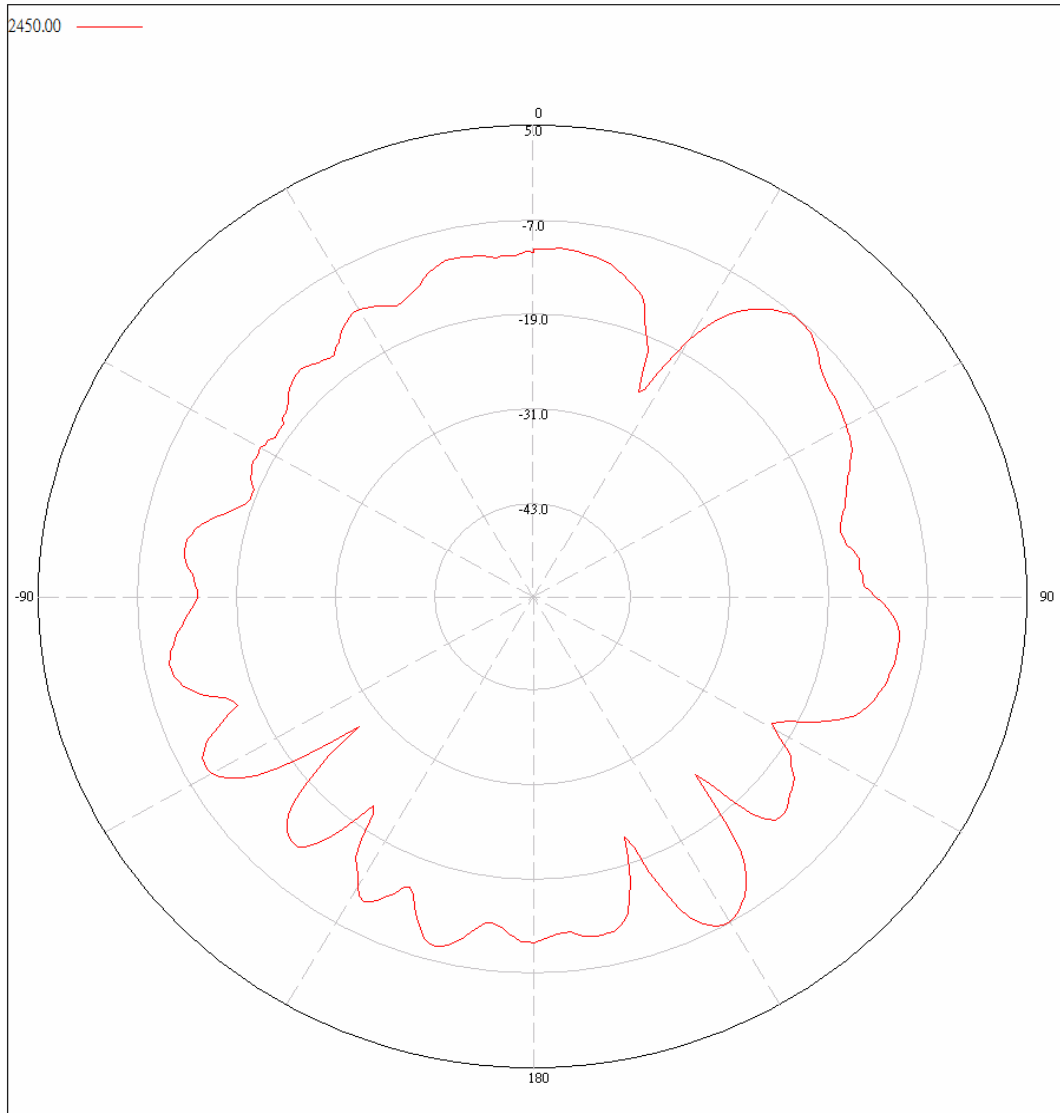
Frequency	2450.0	2600.0
Max.	0.85	0.06
Max. Angle	42.0	25.0
Avr.	-3.54	-4.73

The results shown in this test report refer only to the sample(s) tested unless otherwise stated. This test report cannot be reproduced, except in full, without prior written permission of the Company.

Figure 6

SGS Taiwan Limited Network Analyzer Testing Report

DATE: 2006-02-21 15:44
 CLIENT:
 EUT: BT
 OPERATOR:
 FileName: c:\Documents and Settings\willis_chen\My Documents\antenna\歌爾GSH-300\E1-V.csv



MEMO: memoa
 memob
 memoc

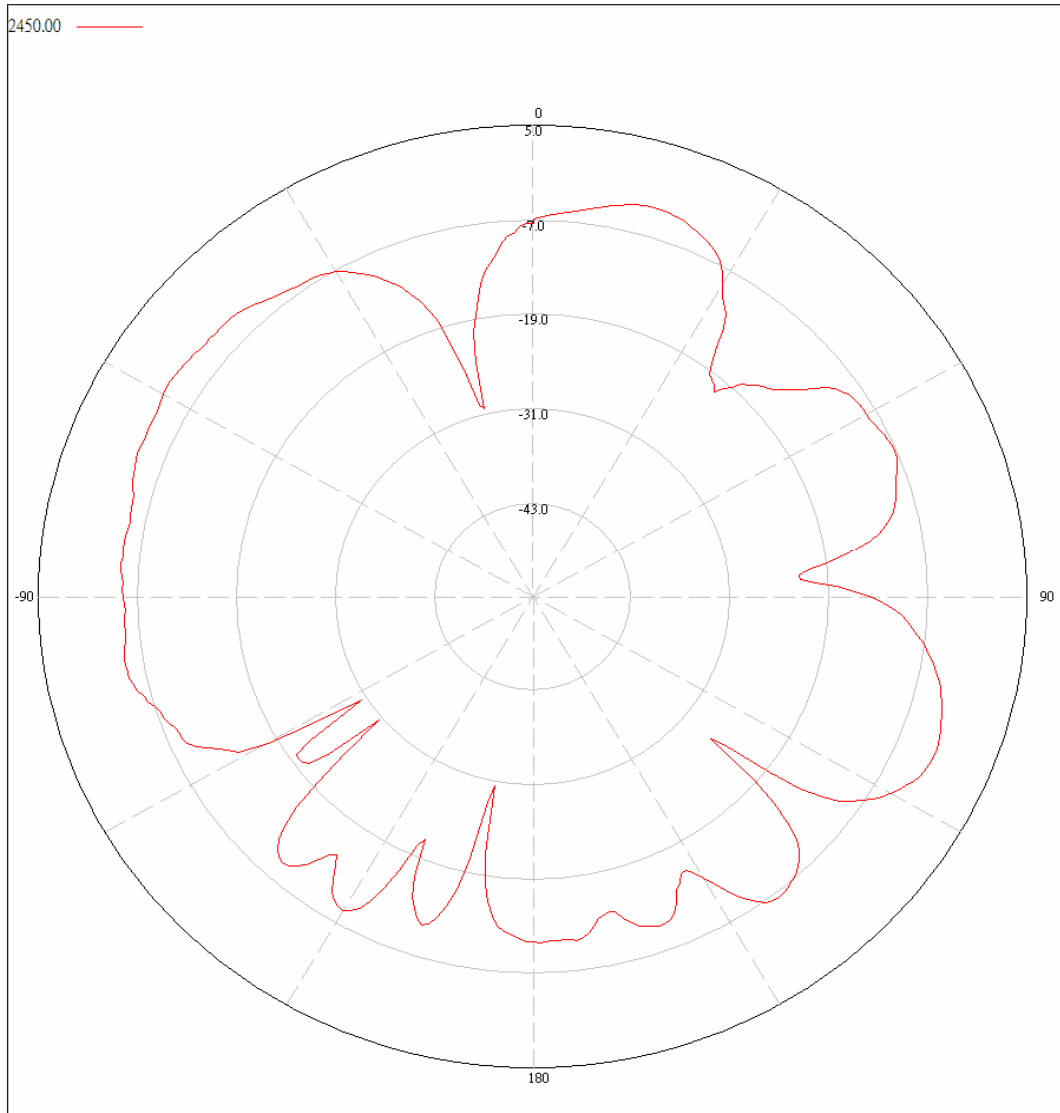
Frequency	2450.0	2600.0
Max.	-7.23	-8.86
Max. Angle	42.0	42.0
Avr.	-12.43	-18.27

The results shown in this test report refer only to the sample(s) tested unless otherwise stated. This test report cannot be reproduced, except in full, without prior written permission of the Company.

Figure 7

SGS Taiwan Limited Network Analyzer Testing Report

DATE: 2006-02-21 15:48
 CLIENT:
 EUT: BT
 OPERATOR:
 FileName: c:\Documents and Settings\willis_chen\My Documents\antenna\歌爾GSH-300\E2-H.csv



MEMO: memoa
 memob
 memoc

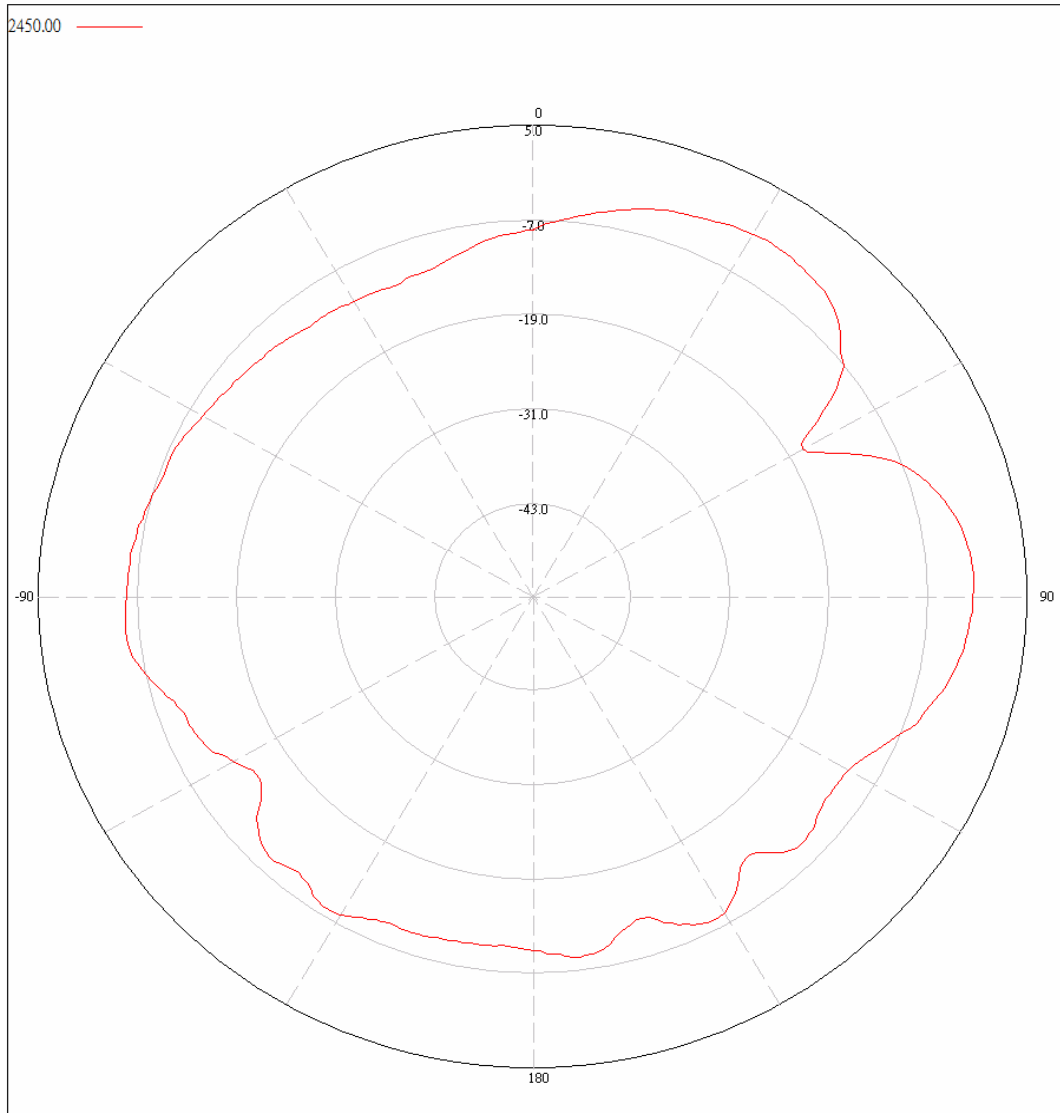
Frequency	2450.0	2600.0
Max.	-2.38	-5.70
Max. Angle	113.0	359.0
Avr.	-7.50	-7.12

The results shown in this test report refer only to the sample(s) tested unless otherwise stated. This test report cannot be reproduced, except in full, without prior written permission of the Company.

Figure 8

SGS Taiwan Limited Network Analyzer Testing Report

DATE: 2006-02-21 15:49
 CLIENT:
 EUT: BT
 OPERATOR:
 FileName: c:\Documents and Settings\willis_chen\My Documents\antenna\歌爾GSH-300\E2-V.csv



MEMO: memoa
 memob
 memoc

Frequency	2450.0	2600.0
Max.	-1.51	-7.34
Max. Angle	32.0	0.0
Avr.	-6.85	-8.76

The results shown in this test report refer only to the sample(s) tested unless otherwise stated. This test report cannot be reproduced, except in full, without prior written permission of the Company.