

GBH861

Bluetooth headset quickstart guide



1. Safety information

Note: Please read this information before you use the headset.

● Electronics Devices

To avoid electromagnetic interference, please turn off the headset in any place where posted notices instruct you to do so.

Note: Most modern electronic devices are susceptible to electromagnetic interference (EMI) if inadequately shielded, designed, or otherwise configured for electromagnetic compatibility.

● Aircraft

Turn off the headset when on board an aircraft. The use of this headset might interfere with the electrical system of an aircraft.

● Medical Instruments

If you use a medical device, such as a pacemaker, consult the manufacturer of your medical device to determine if it is adequately shielded from electromagnetic interference. Your physician can assist you in obtaining this information.

● Power Adapter

Only use the supplied power adapter with the headset.

● Placement

You are advised to put the headset in a safe place where it will not be bent or crushed when not in use otherwise it may bring harm to human body.

● Children

Keep the headset away from children. Some small or detachable parts might be swallowed and result in harm.

● Repair or Service

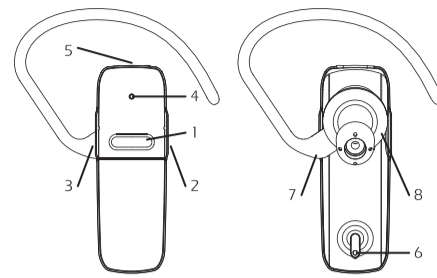
Any attempt to modify or remove of any part of the headset will void the warranty.

2. General Descriptions

GBH861 is a very slim Bluetooth mono headset, which has elegant and compact appearance, the special earbud 120° revolving suitable for left/right comfortable wearing. GBH861 adheres to the Bluetooth V2.0+EDR specifications and supports the Headset, Hands-free Bluetooth profiles.

3. Getting started

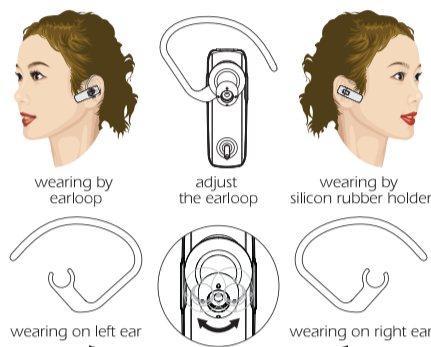
● 3.1 Identifying parts



- 1 - Multi-Function Button
- 2 - Volume Up Button
- 3 - Volume Down Button
- 4 - Indicator Light
- 5 - Charging interface
- 6 - Mic
- 7 - Earloop
- 8 - Receiver

● 3.2 Adjusting the headset for comfort

The lightweight GBH861 can be worn comfortably on either ear. Adjust the headset according to the following figures.



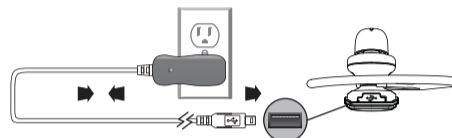
Note: You can adjust the earloop angle for comfort, but please be careful in not to break the clip.

● 3.3 Status LED

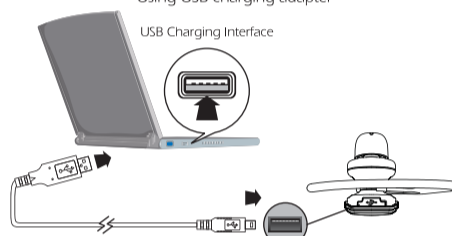
Headset state	LED color and status
Power on	Blue LED Steady for 1 s
Power off	Red LED Steady for 1 s
Pairing mode	Red LED and Blue LED flash alternately
Pairing success	Blue LED Steady for 2.5 s
Standby Mode	Blue LED flashes 0.2 s every 5 s
Ringing	Red and Blue LED Flash 0.2 s together every 1 s
Ongoing Call	Blue LED flashes 0.5 s every 2 s

● 3.4 Charging the built-in battery

GBH861 has a built-in battery, which must be charged fully before using the headset. Charging takes about 2 hours. You can charge the headset through the AC adapter (optional) or USB connector on computer.



Using USB charging adapter



Using USB cable

Note:

1. Please make sure the max. output voltage (including noise) of Adapter is $\leq 5.5V$ (including empty load and full load), otherwise the damage is not responsible.
2. If GBH861 is in low battery status, the indicator of Red LED flashes, now you should charge the headset timely.
3. GBH861 is reset when charging. Red LED is steady light when charging. When finish, Red LED is off.

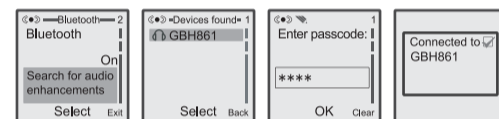
4. The function at a glance

In this guide, "Short press" refers to a time period of less than 1 second during which a functional button is being pressed. "Long press" refers to a time period of more than 3 second during which a functional button is being pressed. "Press and hold" refers to a time period of more than 5 second during which a functional button is being pressed. "MFB" button is the Multi-function button, "Vol+" button is the Volume up button and "Vol-" button is the Volume down button.

● 4.1 Phone operation Pairing the headset with a phone

Before you can use the headset to make calls, you must pair the headset with your phone. Pairing creates a secure link between your phone and the unique ID of the headset. You only have to pair devices once.

- (1) To put the headset in pairing mode, press and hold (over 5 seconds) the Multi-function button until the LED flash red/blue.
- (2) Scroll to the Bluetooth menu in you phone and search for active devices. (Refer to you phone's user manual for details)
- (3) When the search completes, a list of devices found is displayed. (The screen examples here are from a Nokia 6230)



- (4) Select "GBH861" and when prompted input the default passkey (0000). When successfully paired, the red/blue LED on the headset changes to flashing blue.

Note: You can pair the headset with up to eight Bluetooth devices. When you pair the device with a ninth device, the oldest-paired device is deleted.

● Phone functions at glance

Headset Function	Headset Status	Button
Power on	Power off	Long press multi-function button
Power off	Power on	Very long press multi-function button
Pairing	Power off	Very long press multi-function button
Answer the call	Incoming call	Short press multi-function button
Reject the call	Incoming call	Long press multi-function button
End the call	Ongoing call	Short press multi-function button
Volume +/- step by step	Ongoing call	Short press Volume+/Volume-
Transfer the voice between Mobile phone and headset	Ongoing call	Long press multi-function button
Voice dial	Connected	Long press multi-function button
Cancel voice dial	Dialing	Long press multi-function button
Last number redial	Connected	Double Short press multi-function button
Connecting actively	Standby	Short press multi-function button
Enter saving mode	Connected	10 minutes no using
Exit saving mode	Connected	Press any buttons

● 4.2 Make internet phone calls

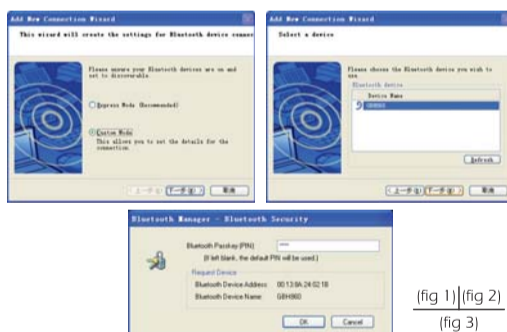
There are many internet phone services (VoIP) that let you make calls from your computer. You must add a new connection for this function.

- (1) To put the headset in pairing mode, press and hold (over 5 seconds) **Multi-function button** until the LED flashes red/blue.

- (2) Right-click the **Bluetooth Manager** icon in the system tray and click **Add New Connection** (fig 1).

- (3) Select the **Custom Mode** radio button and click **Next**, The wizard searches for device and the following screen appears, select the GBH861 and click **Next** (fig 2).

- (4) Type in the passkey (0000) and click **OK** (fig 3).



(fig 1)|(fig 2)
(fig 3)

- (5) Under Service Class, select headset and click **Next** (fig 4).



(fig 4-1)



(fig 4-2)

- (6) When you hear a signal tone on the headset, short-press **Multi-function button** (fig 5).



(fig 5)

- (7) Click **Next**.

- (8) A registration confirmation screen appears. Click **Finish** to complete the connection. The new connection is shown in the Bluetooth Settings window (fig 6).

- (9) Right-click the headset icon and click **Connect** (fig 7).

- (10) When you hear a single tone on the headset, short-press **Multi-function button**. Once connected the icon changes to a handshake (fig 8).



(fig 6) | (fig 7-1)
(fig 7-2) | (fig 8)

Now you can make an internet phone call by using GBH861.

Note: The headset only controls volume, Use the Skype interface for all call functions.

5. Specifications

Battery capacity	65 mAh
Talk time	up to 4 hours
Standby time	up to 110 hours
Weight	9 g
Size	51.9 * 18 * 28.3 mm

6. FCC RF Radiation Exposure Statement

Federal Communications Commission (FCC) Statement

● 15.21

You are cautioned that changes or modifications not expressly approved by the part responsible for compliance could void the user's authority to operate the equipment.

● 15.105 (b)

This equipment has been tested and found to comply with the limits for a Class B digital device, pursuant to part 15 of the FCC rules. These limits are designed to provide reasonable protection against harmful interference in a residential installation. This equipment generates, uses and can radiate radio frequency energy and, if not installed and used in accordance with the instructions, may cause harmful interference to radio communications. However, there is no guarantee that interference will not occur in a particular installation. If this equipment does cause harmful interference to radio or television reception, which can be determined by turning the equipment off and on, the user is encouraged to try to correct the interference by one or more of the following measures:

- Reorient or relocate the receiving antenna.
- Increase the separation between the equipment and receiver.
- Connect the equipment into an outlet on a circuit different from that to which the receiver is connected.
- Consult the dealer or an experienced radio/TV technician for help.

● Operation is subject to the following two conditions:

- (1) this device may not cause interference and
- (2) this device must accept any interference, including interference that may cause undesired operation of the device.

● FCC RF Radiation Exposure Statement:

This equipment complies with FCC radiation exposure limits set forth for an uncontrolled environment. End users must follow the specific operating instructions for satisfying RF exposure compliance. This transmitter must not be co-located or operating in conjunction with any other antenna or transmitter.

If you need further help, please contact us:

GoerTek Technology Co.,Ltd.
http://www.goersale.com
e-mail: service@goersale.com

Customer Service Hotline: 86-532-88999318

The copyright and brand name are owned by the register. All information in this manual is subject to change without prior notice. GoerTek has the authority to explain the above information. For more information, please visit GoerTek Website: <http://www.goersale.com>