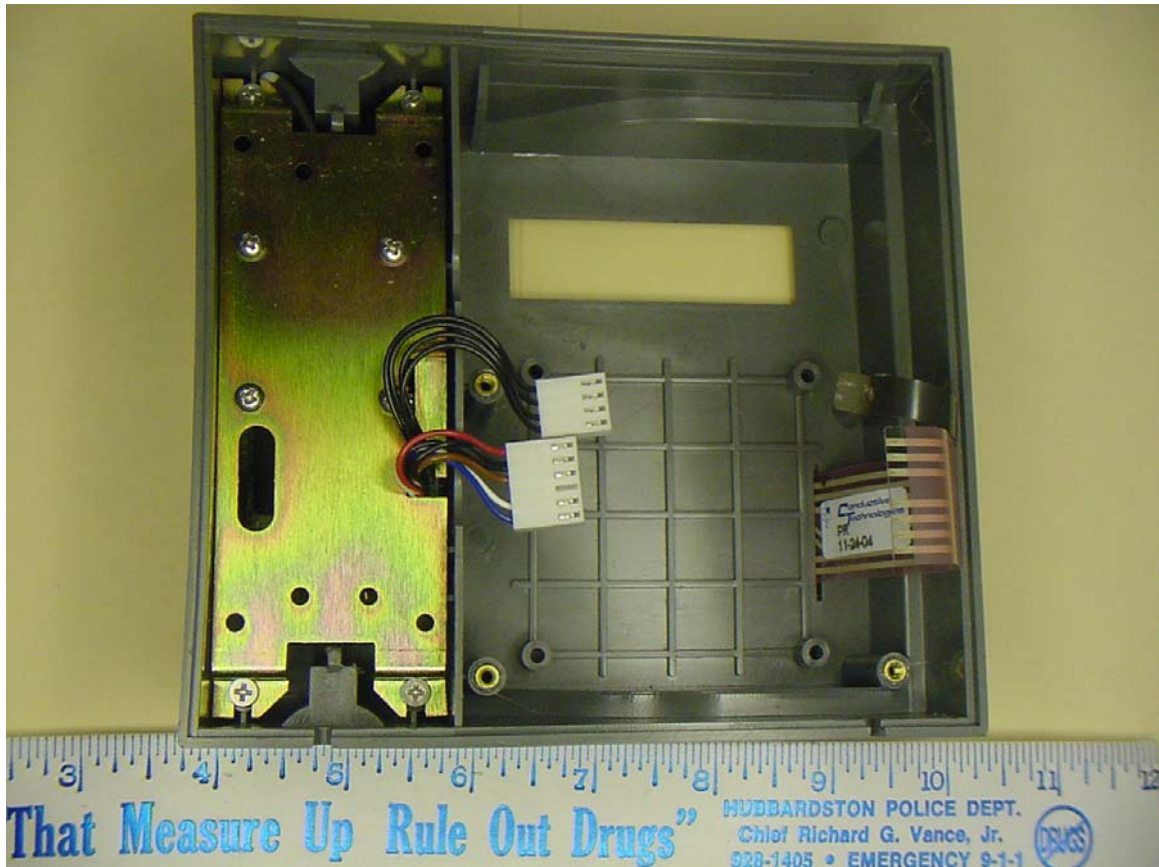
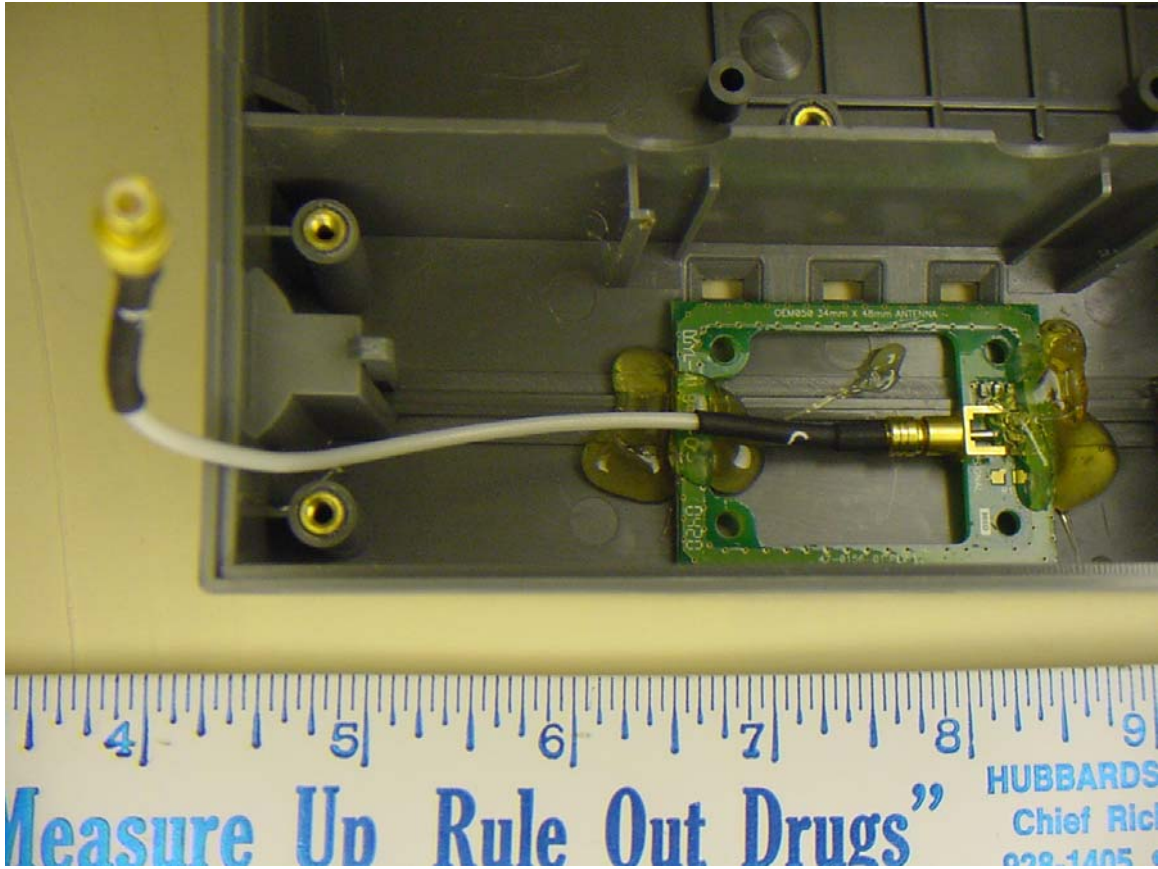




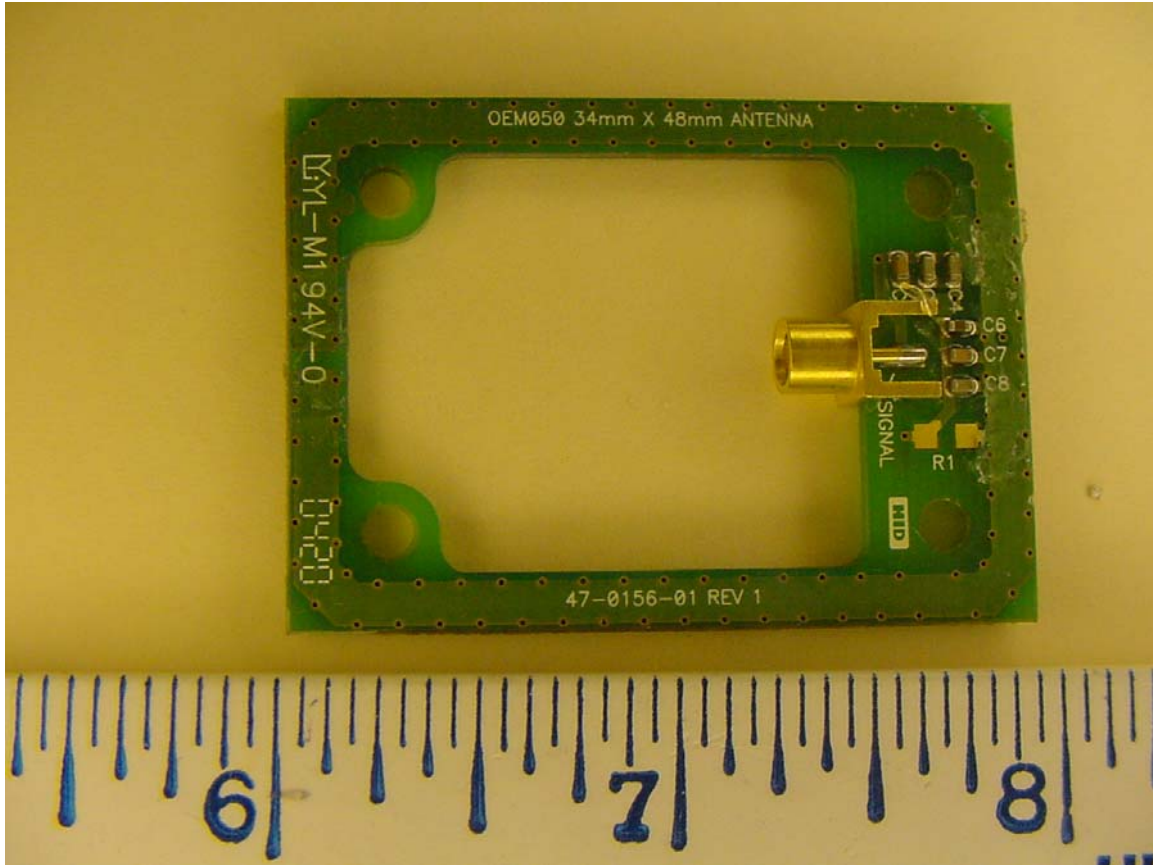
Inside box with rear cover removed. (EUT)



Inside of housing with main board removed. Keyboard cables can be seen going through the housing at the right. Prox card reader is on the left.

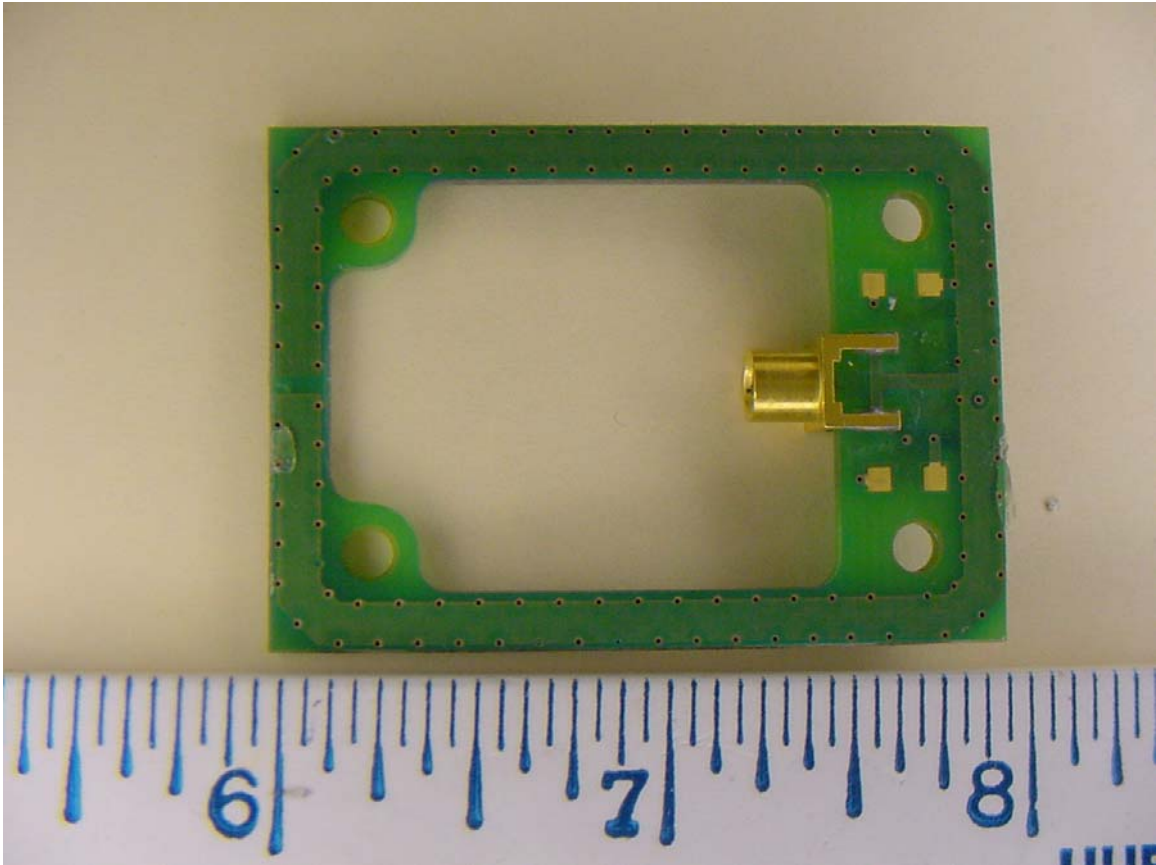


Inside of housing with radio module removed. Shows antenna board and associated cable.

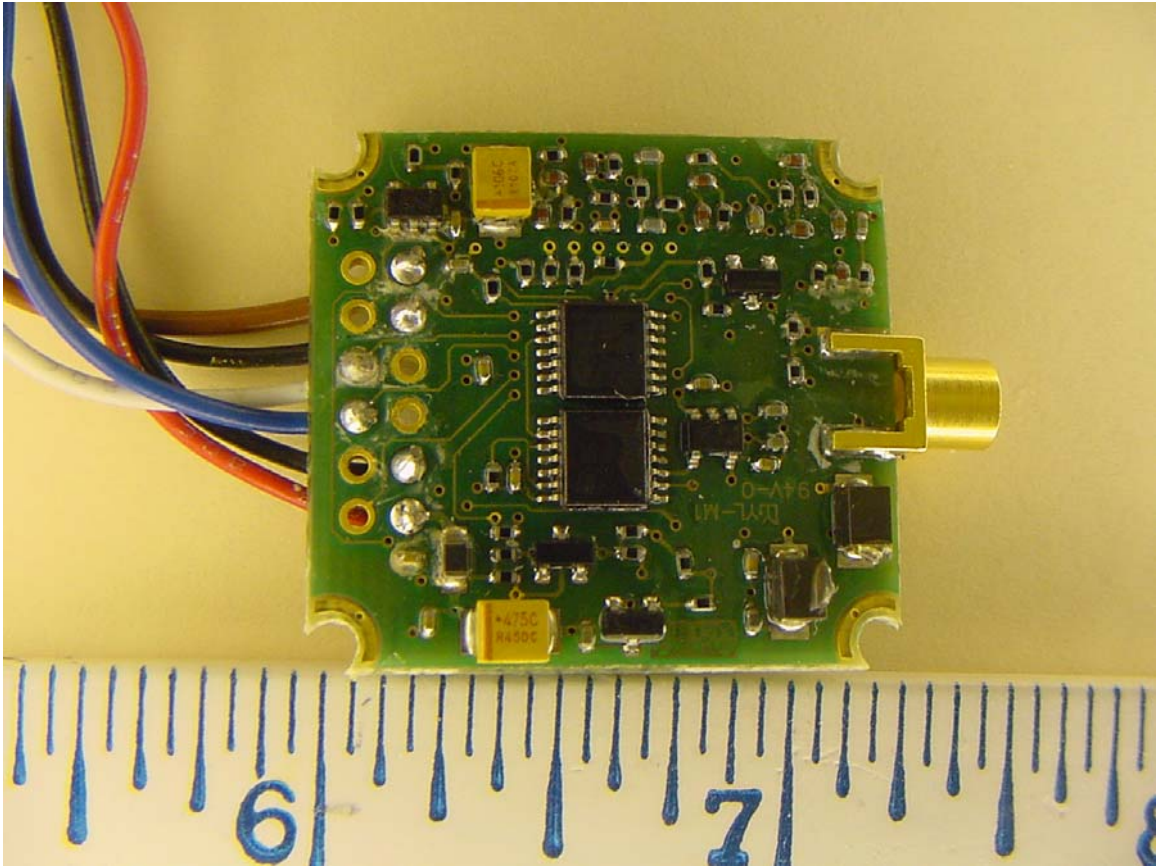


Antenna Top

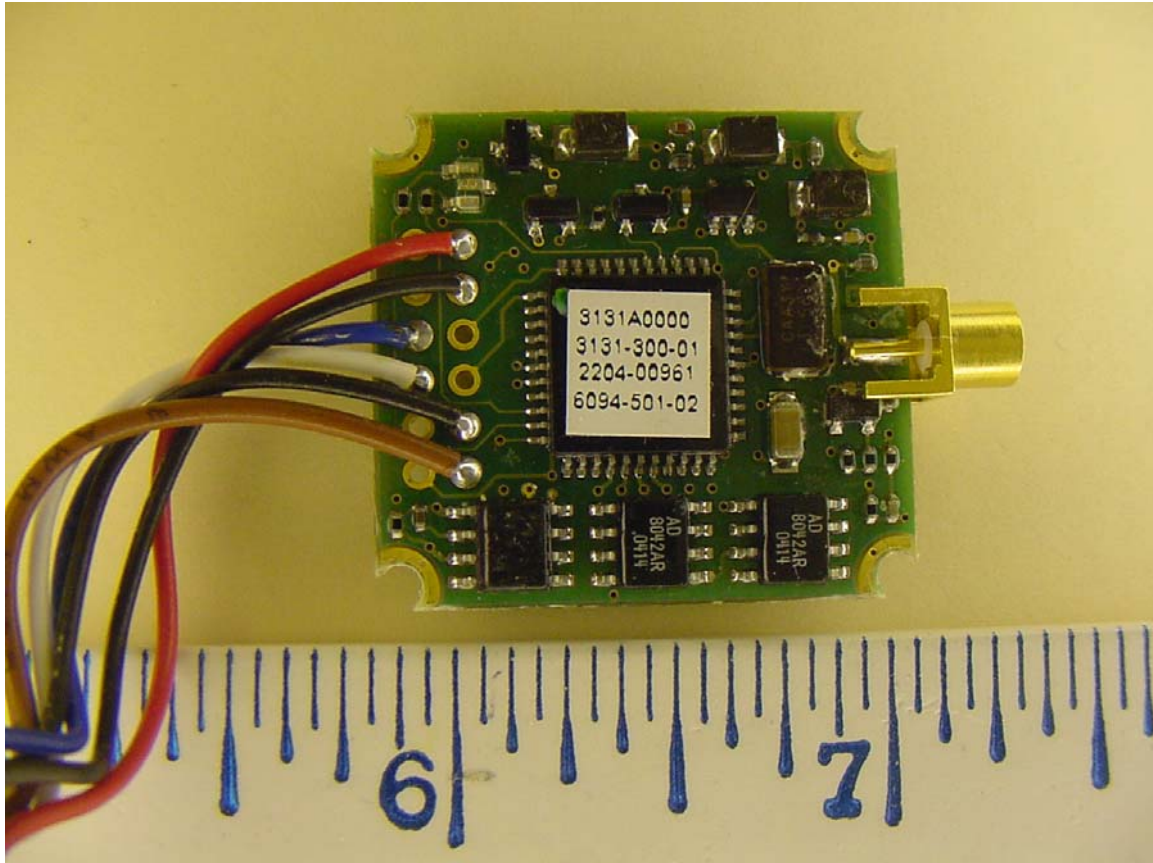




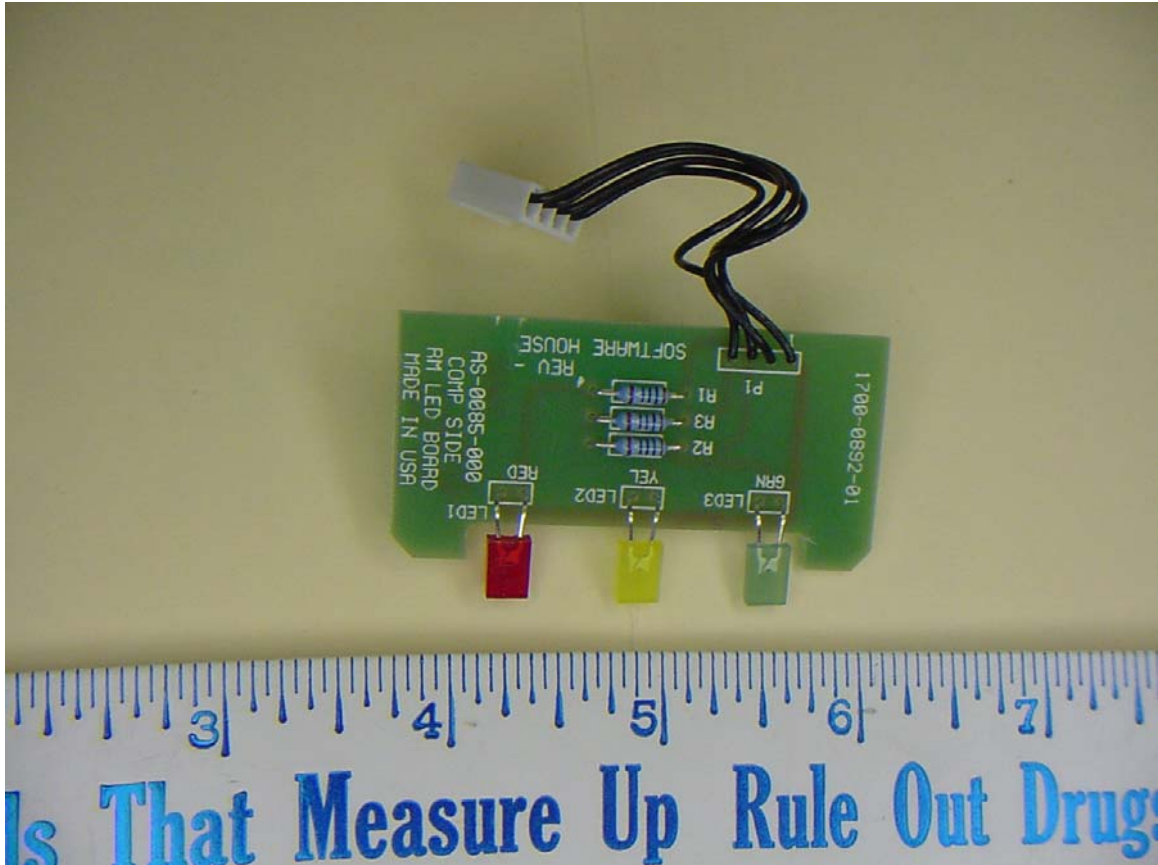
Antenna bottom



Rear of Radio board

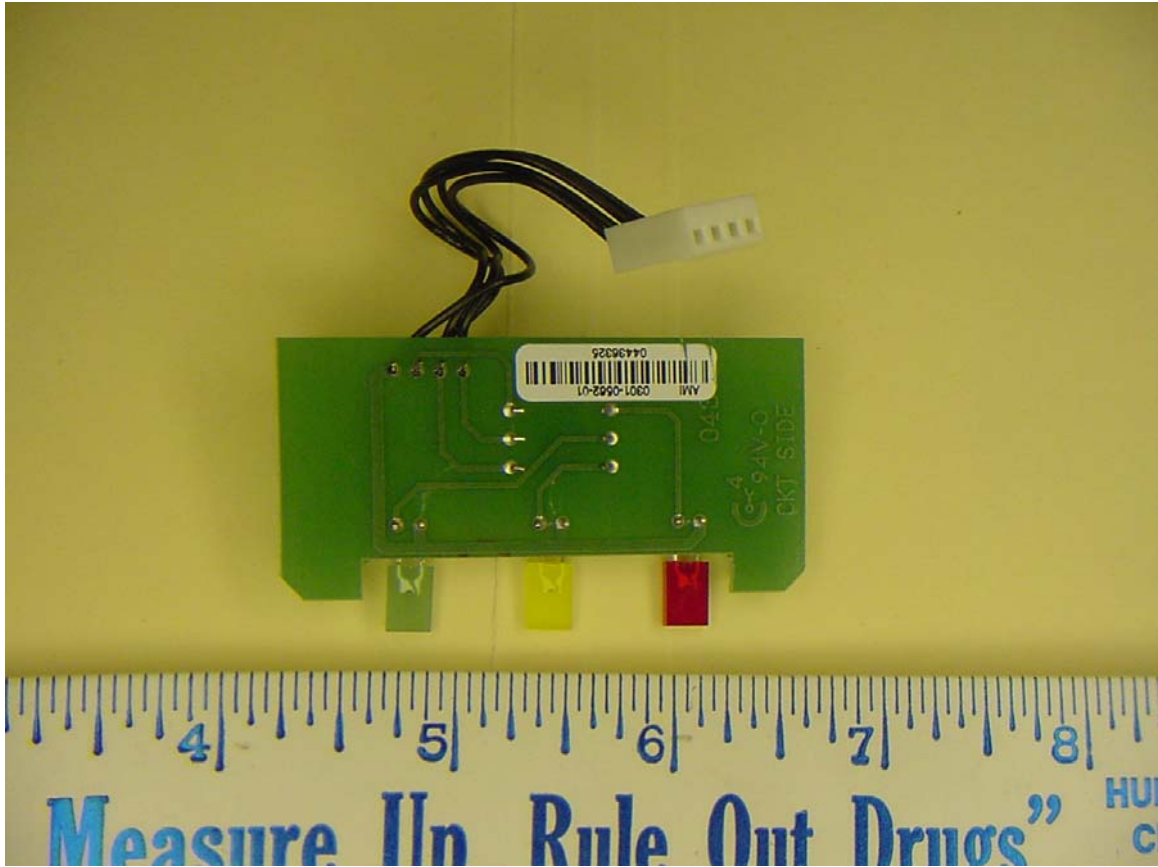


Front of radio board

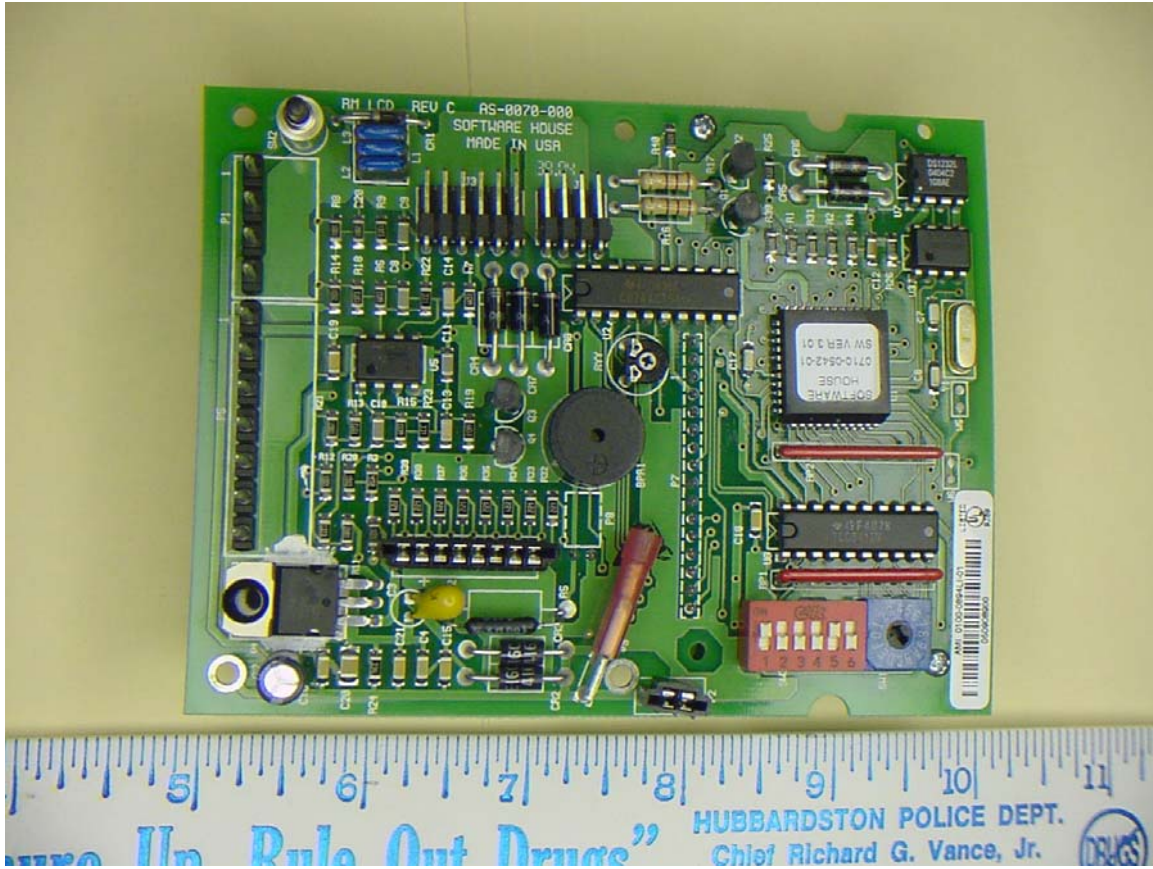


LED board component side.

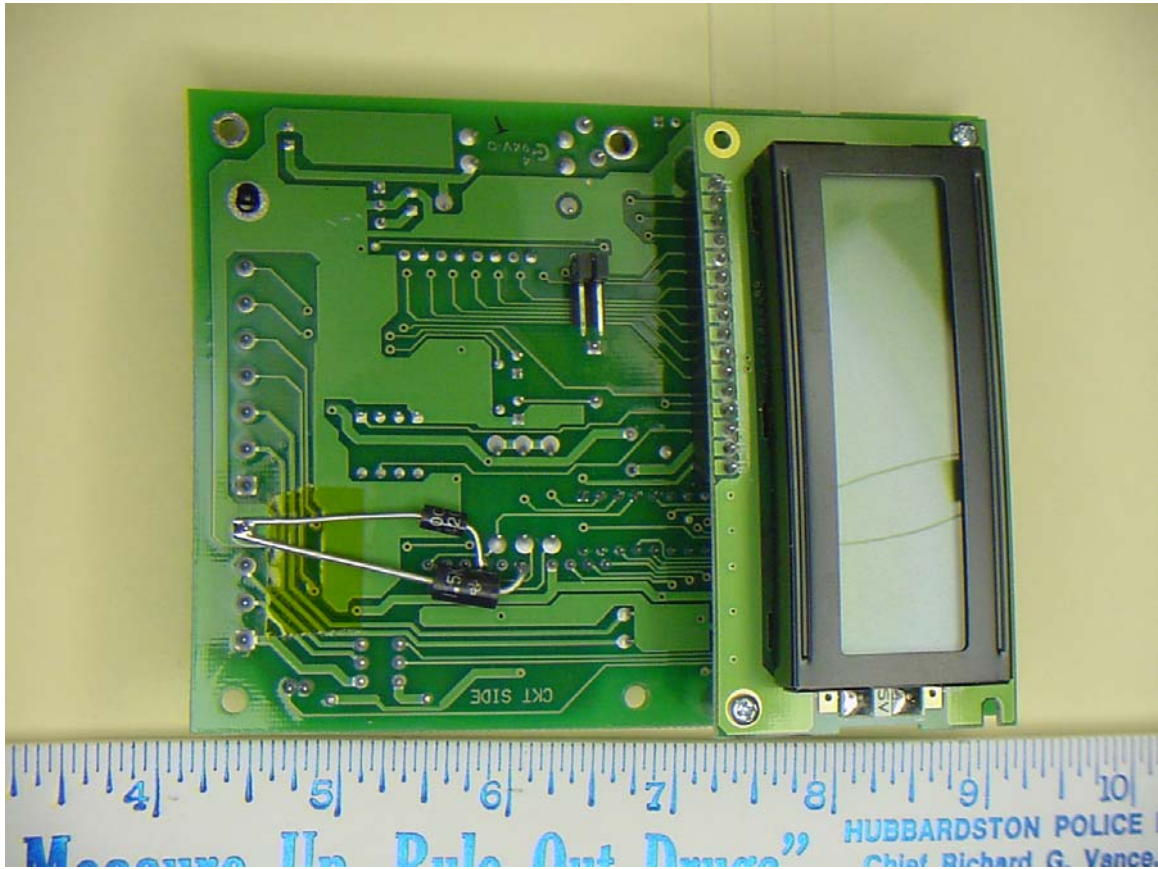




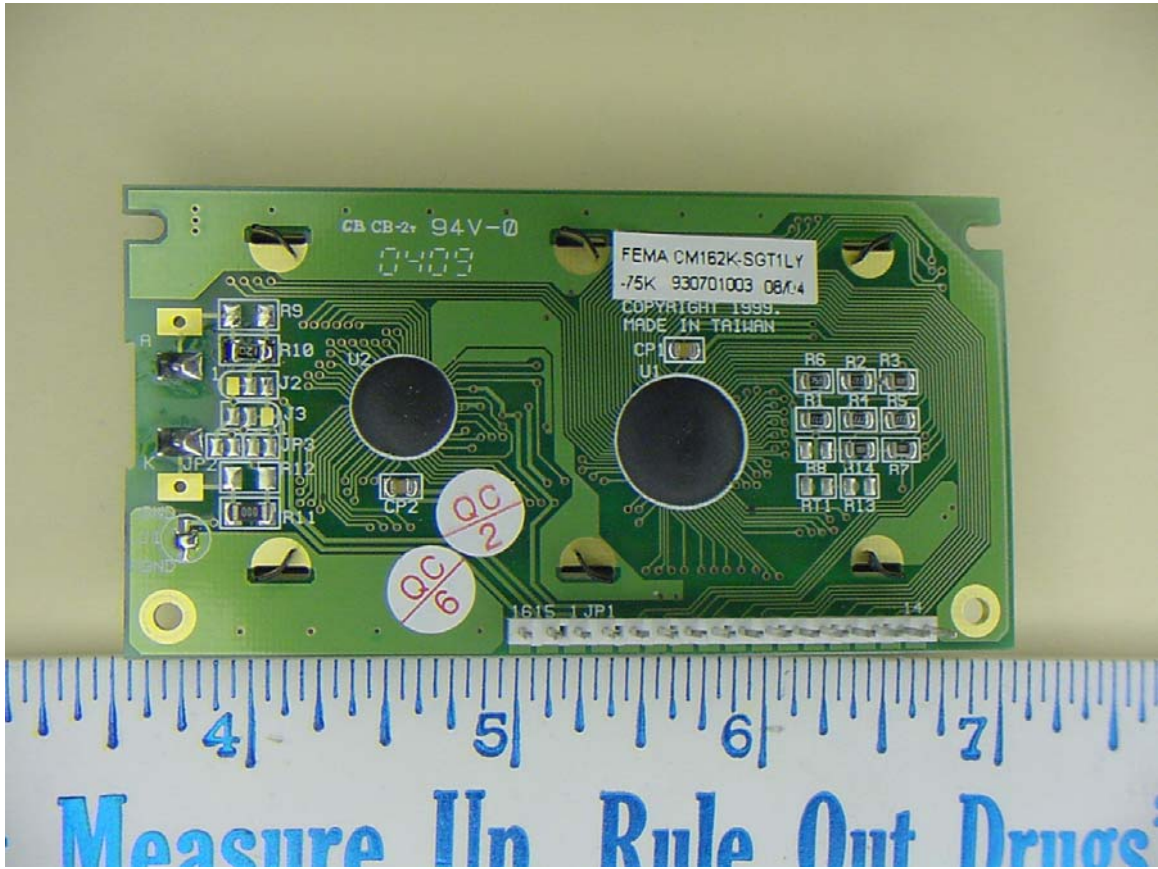
LED board circuit side.



Component side of Main Board



Solder side of Main Board with LCD attached.



Rear of LCD board