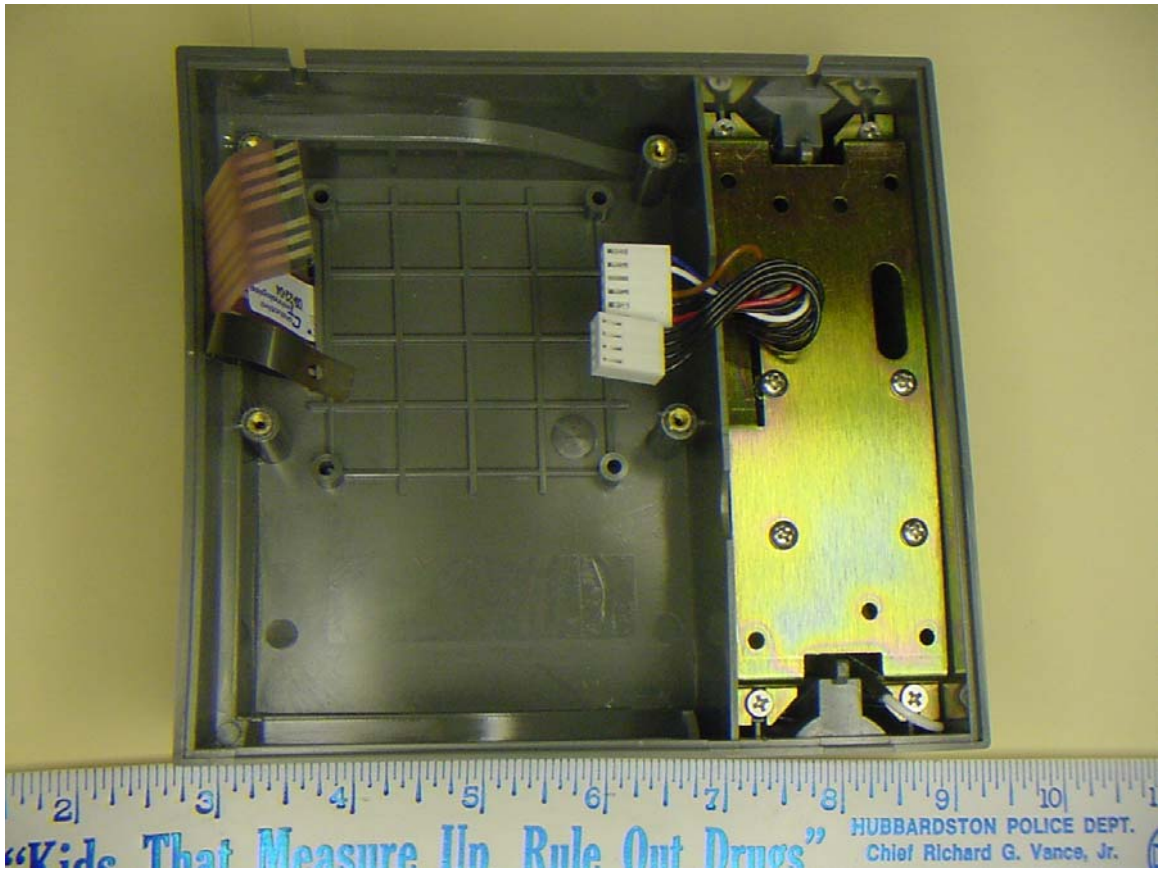
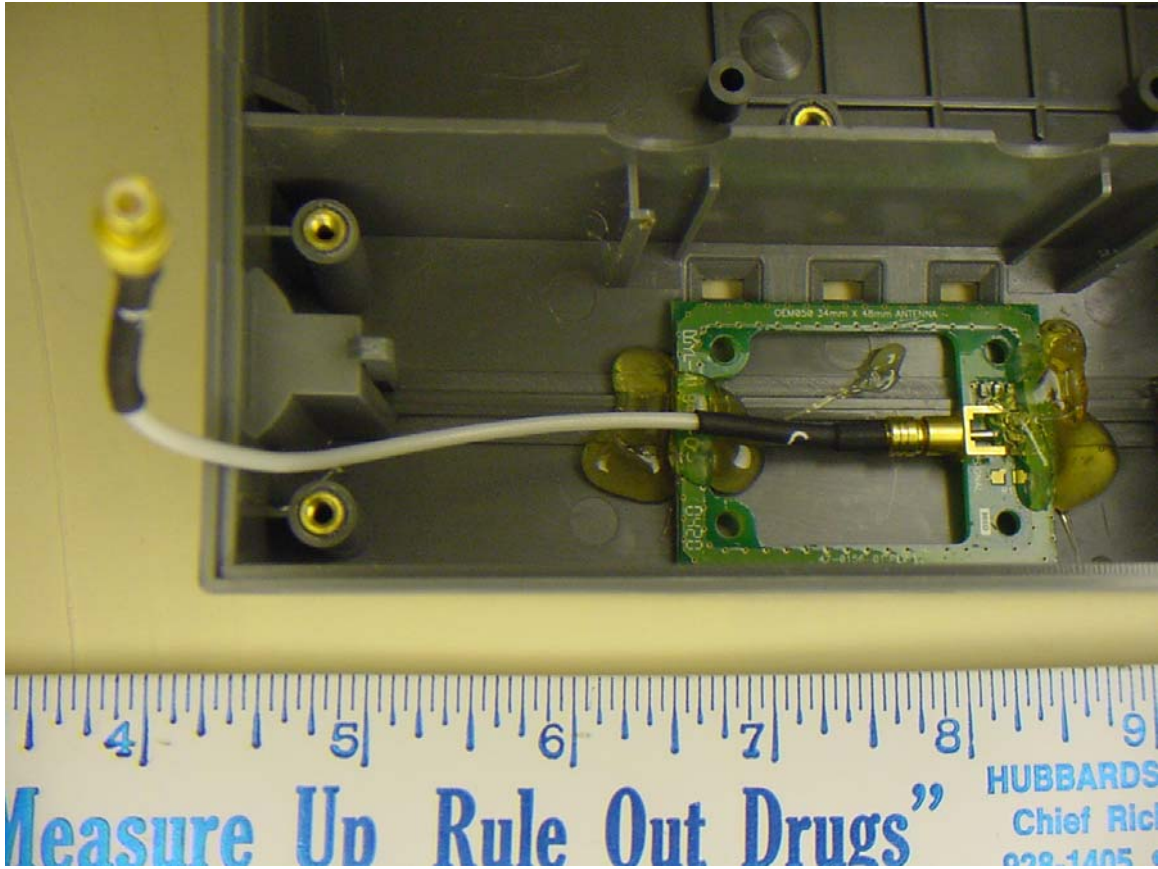


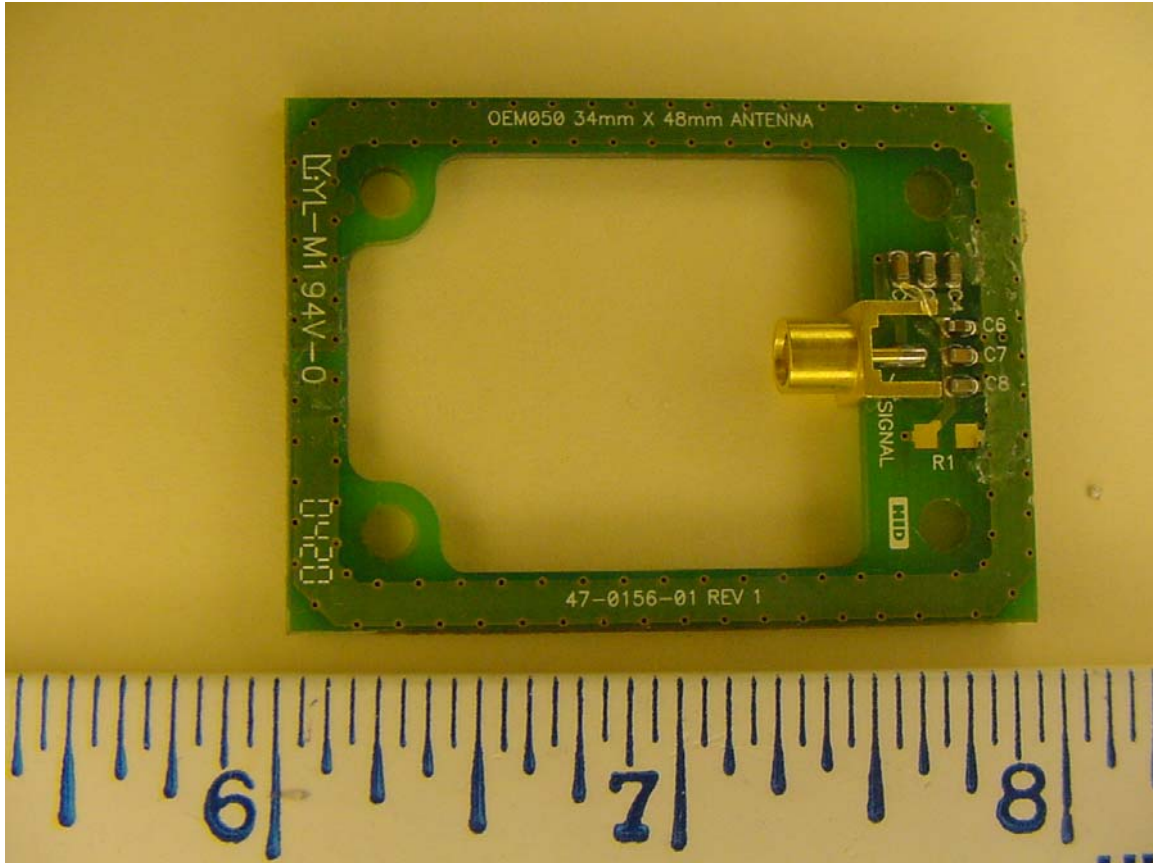
Inside box with rear cover removed. (EUT)



Inside housing with main board removed, radio is on the right. Keypad cables can be seen on the left.

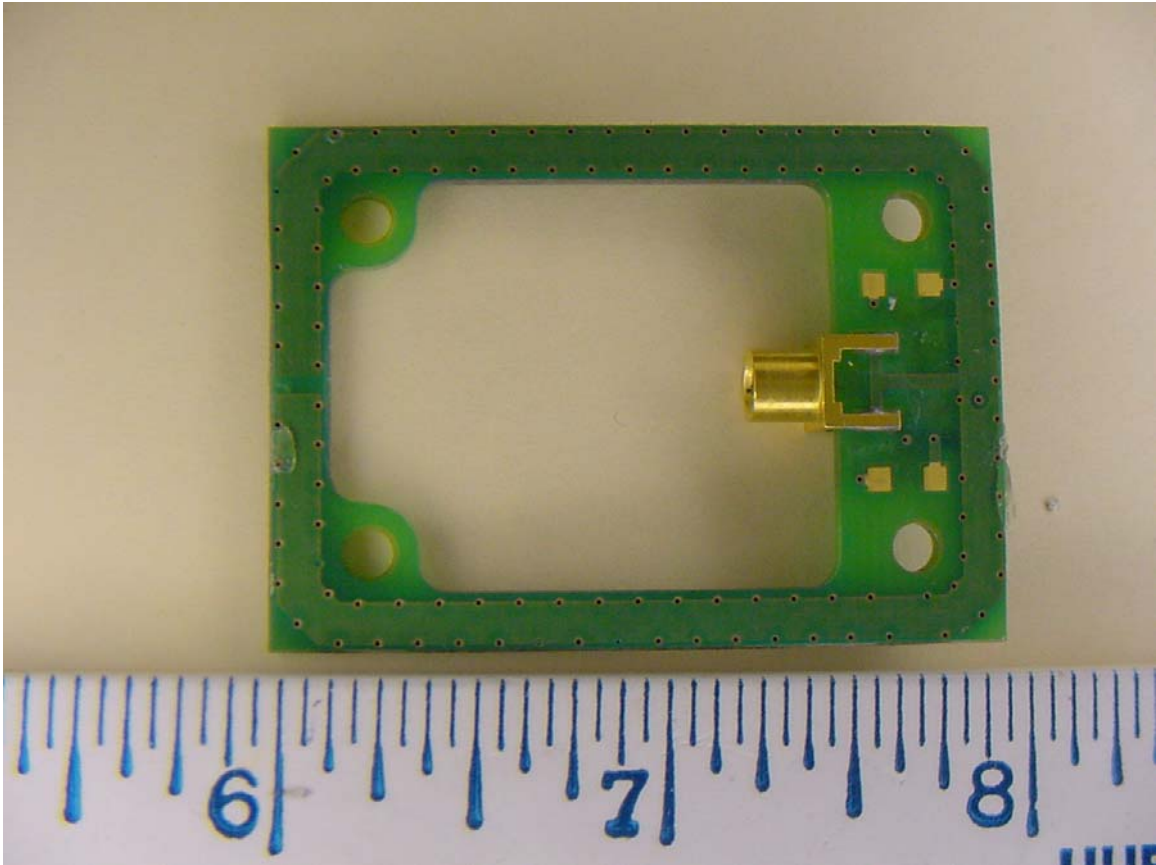


Inside of housing with radio module removed. Shows antenna board and associated cable.

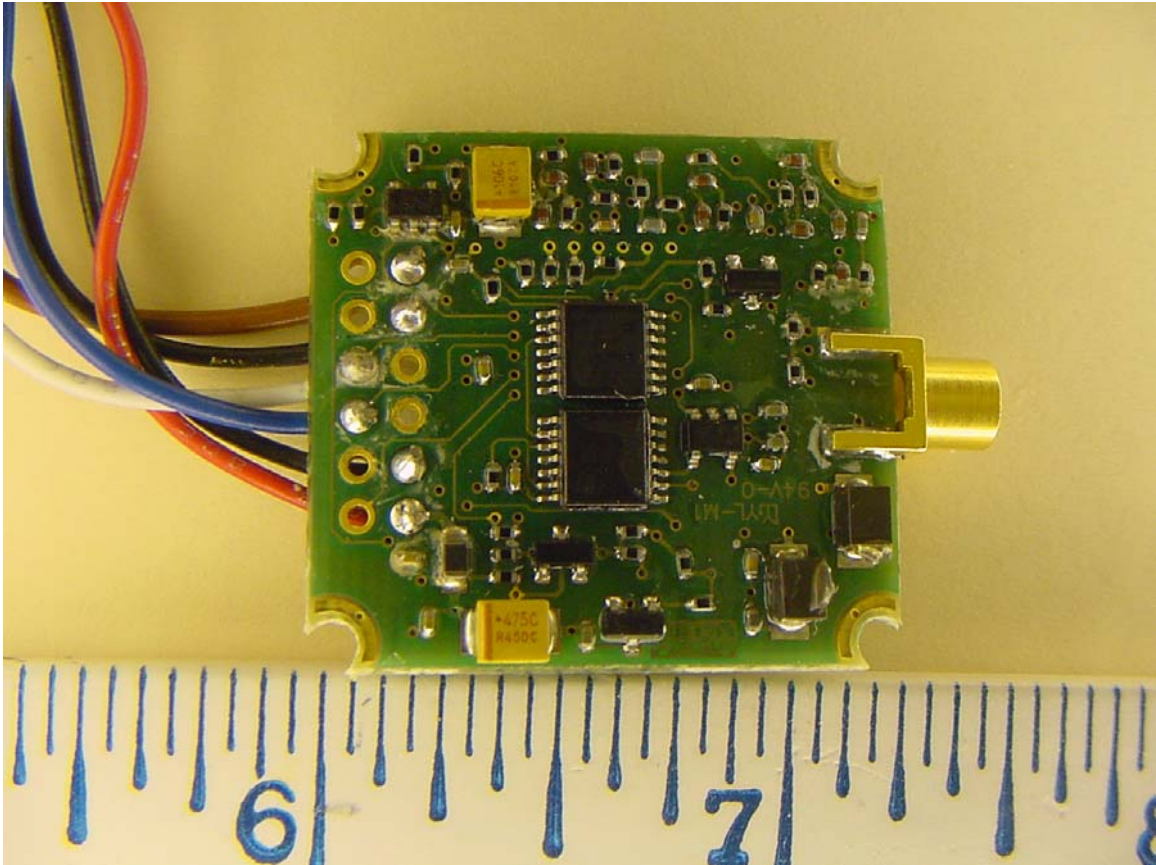


Antenna Top

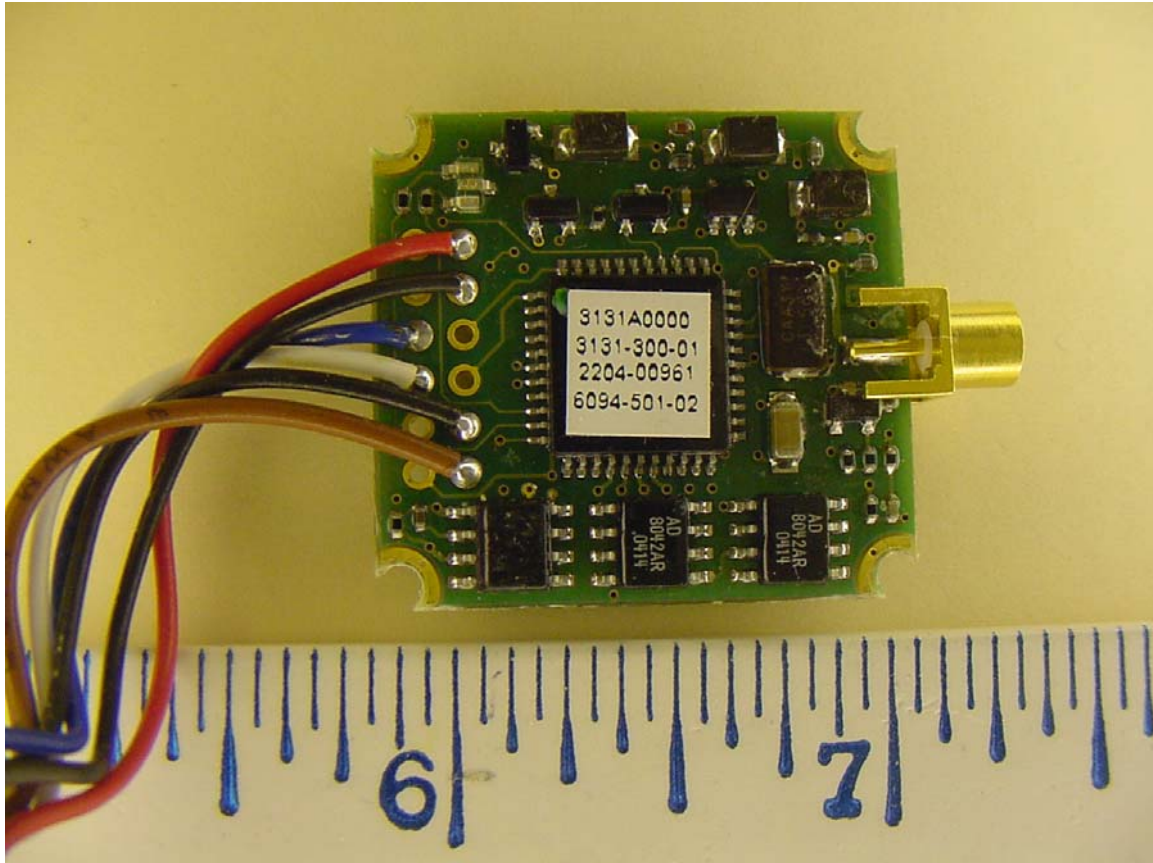




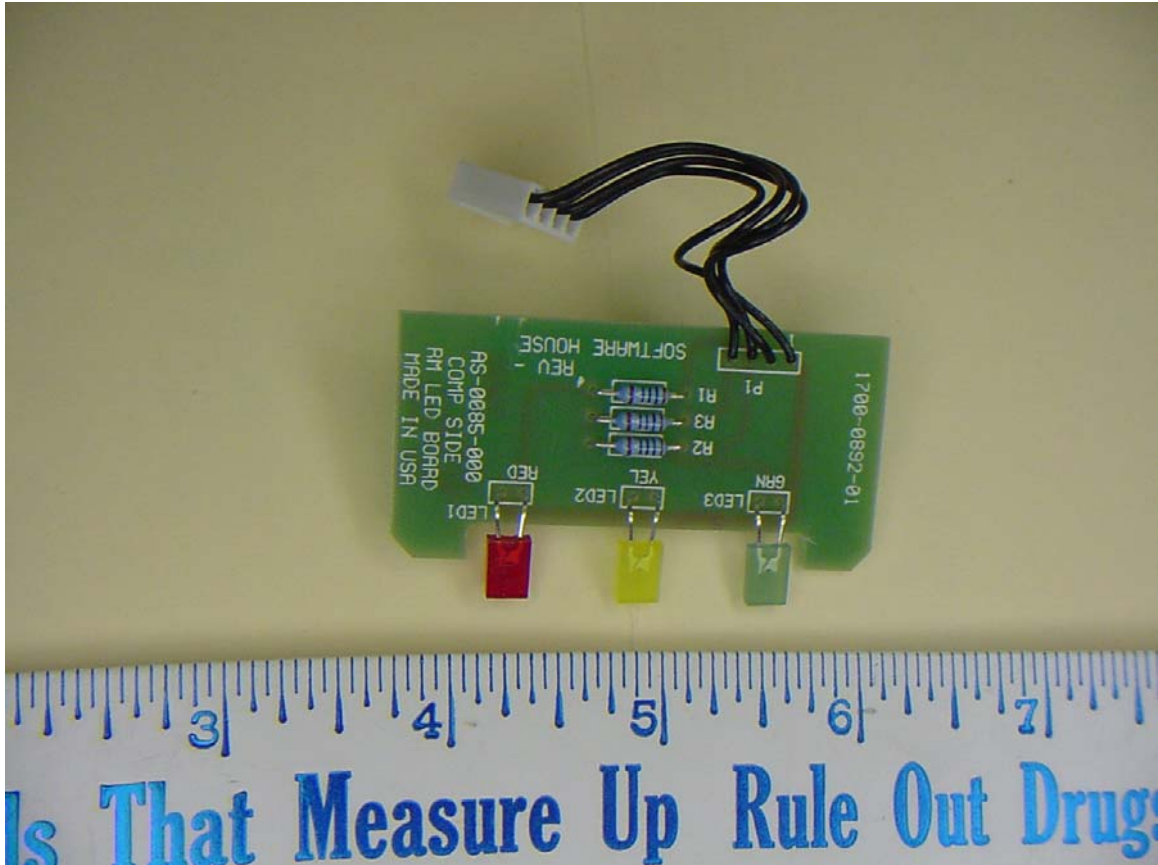
Antenna bottom



Rear of Radio board

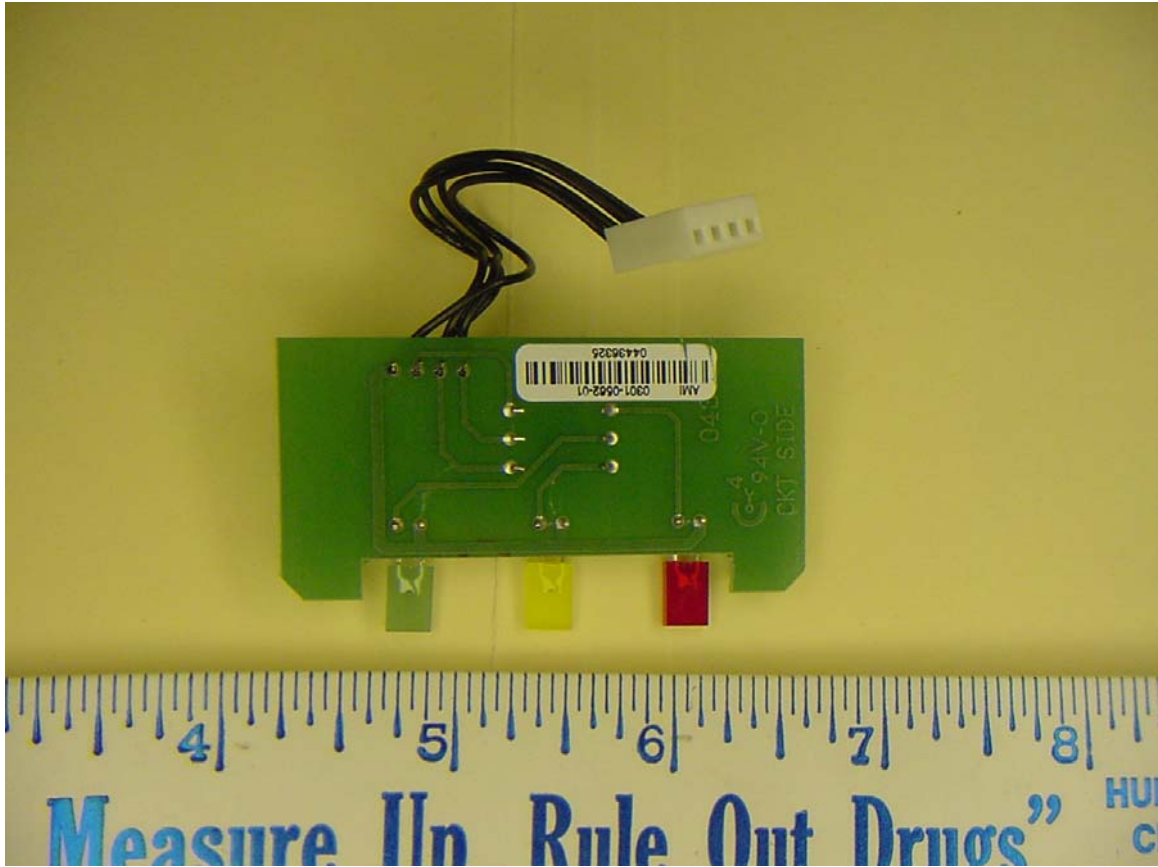


Front of radio board

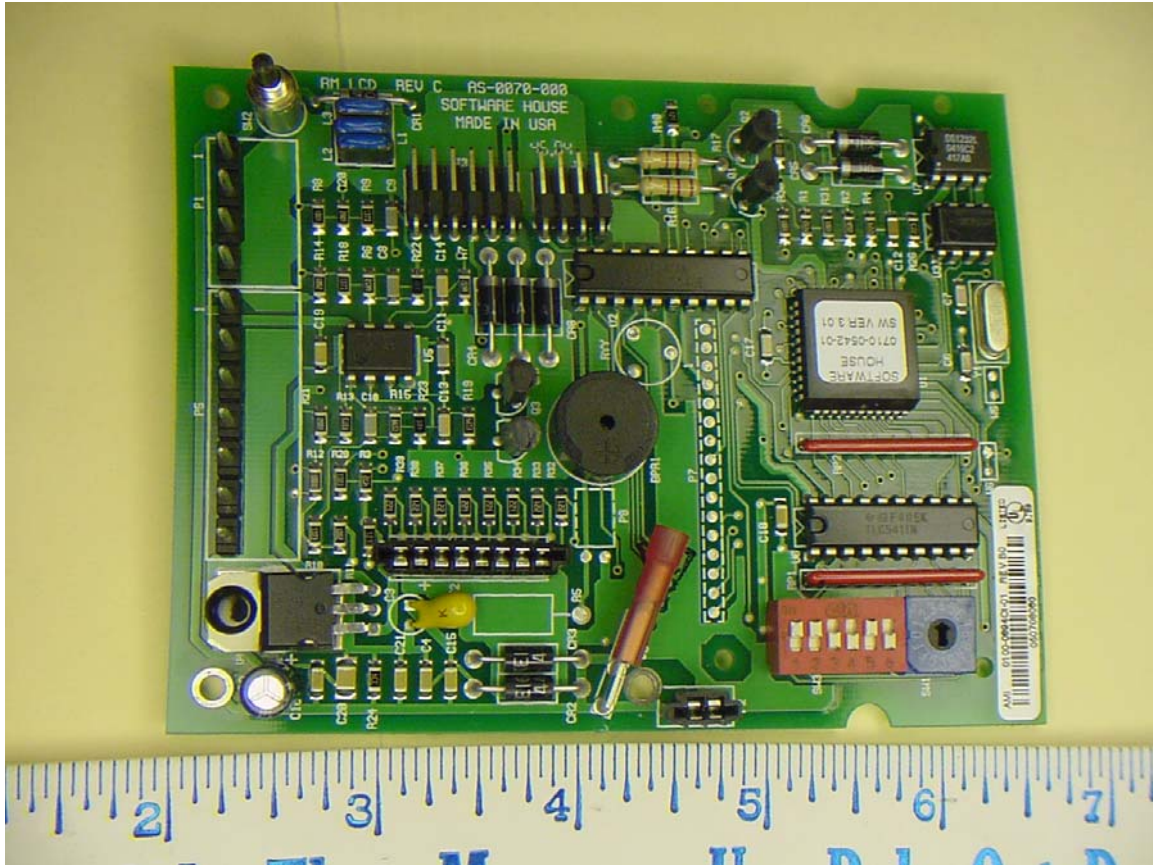


LED board component side.

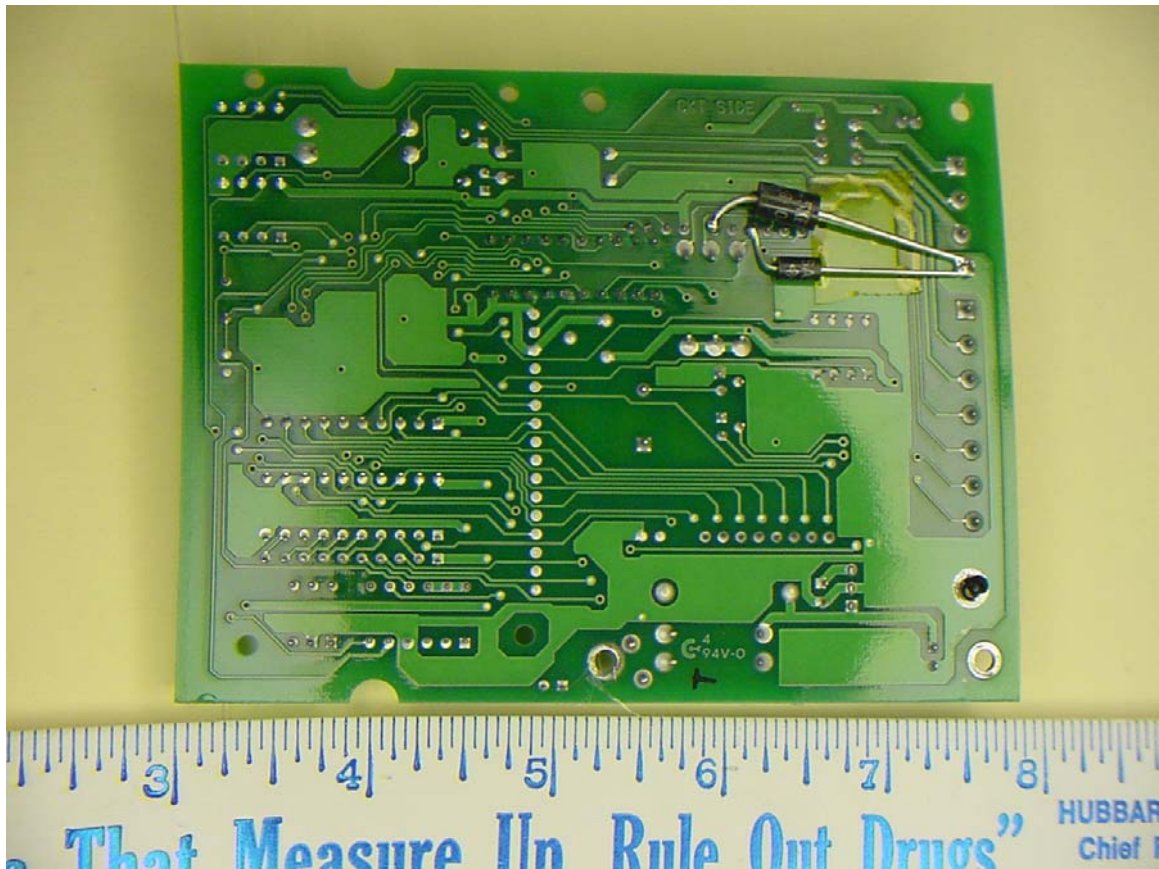




LED board circuit side.



Component side of Main Board



Solder side of Main Board.