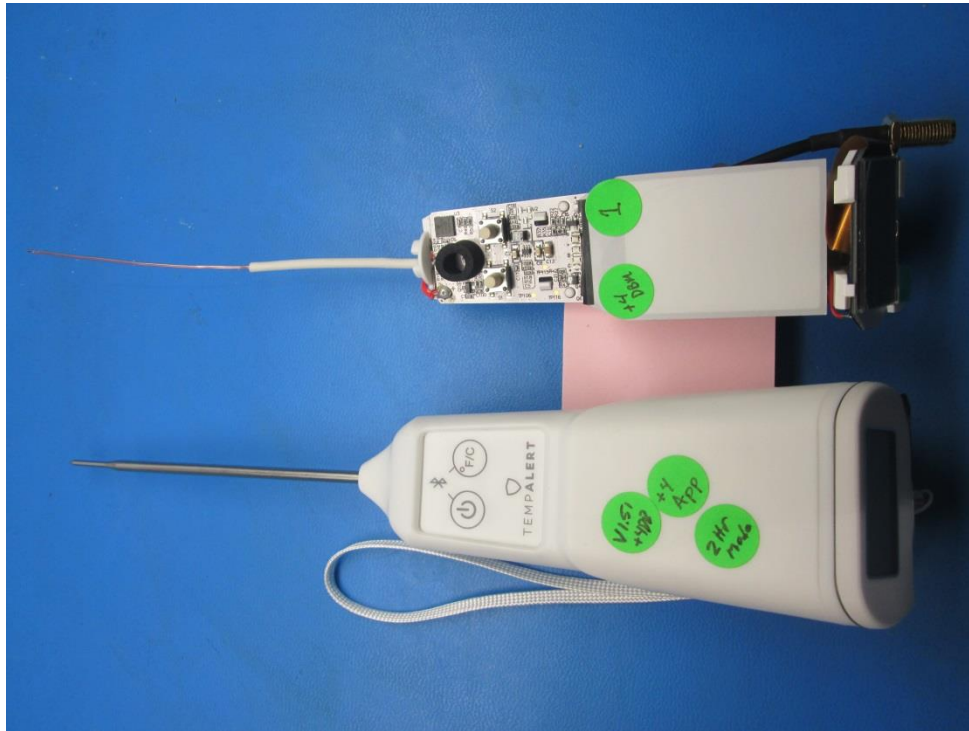


FCC ID: SZ9TMBFP150  
IC : 10940A-TMBFP150

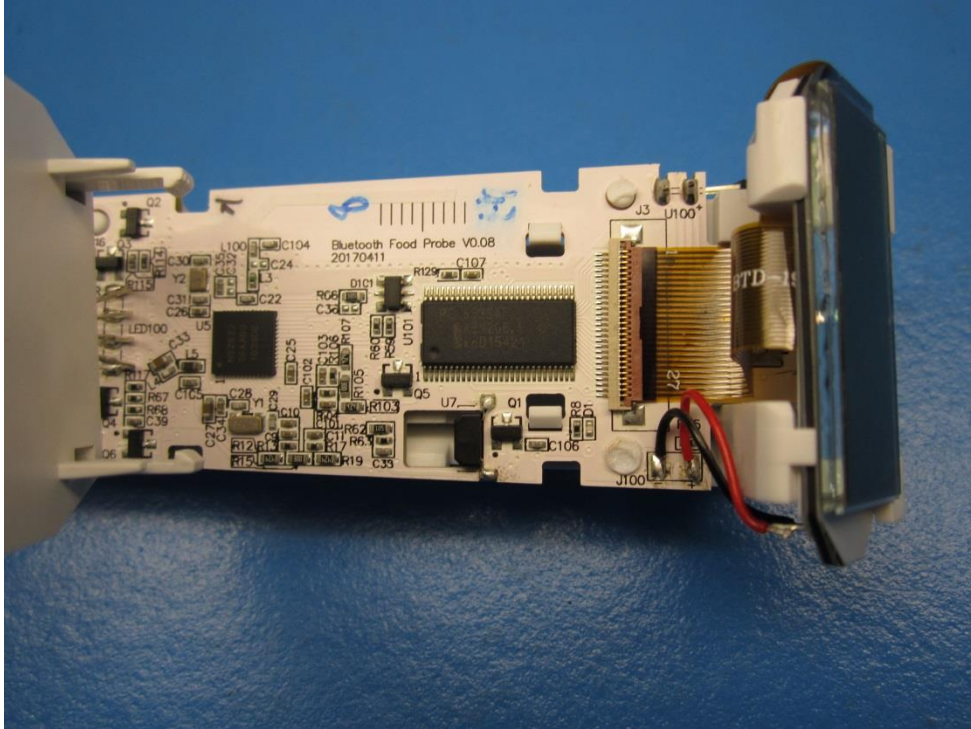


Bluetooth LE Kitchen Thermometer Covers Removed for View, RGB LED Panel Exposed

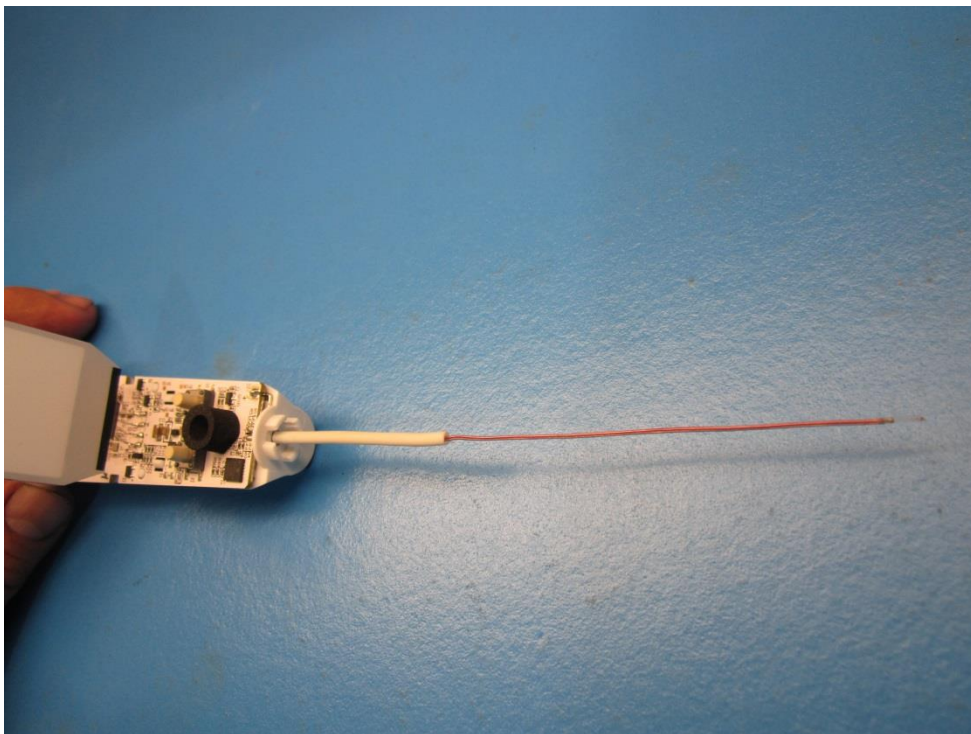


Bluetooth LE Kitchen Thermometer, Bottom View, SMA Coupler for Testing Only

FCC ID: SZ9TMBFP150  
IC : 10940A-TMBFP150

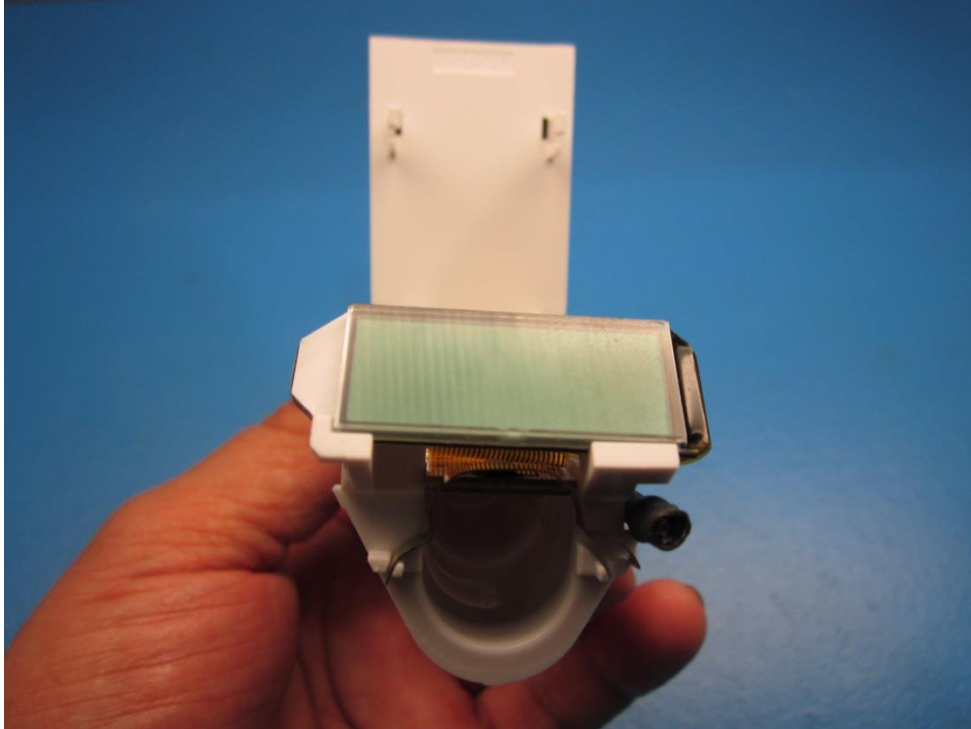


Bluetooth LE Kitchen Thermometer, Internal view, RGB LED Panel Raised



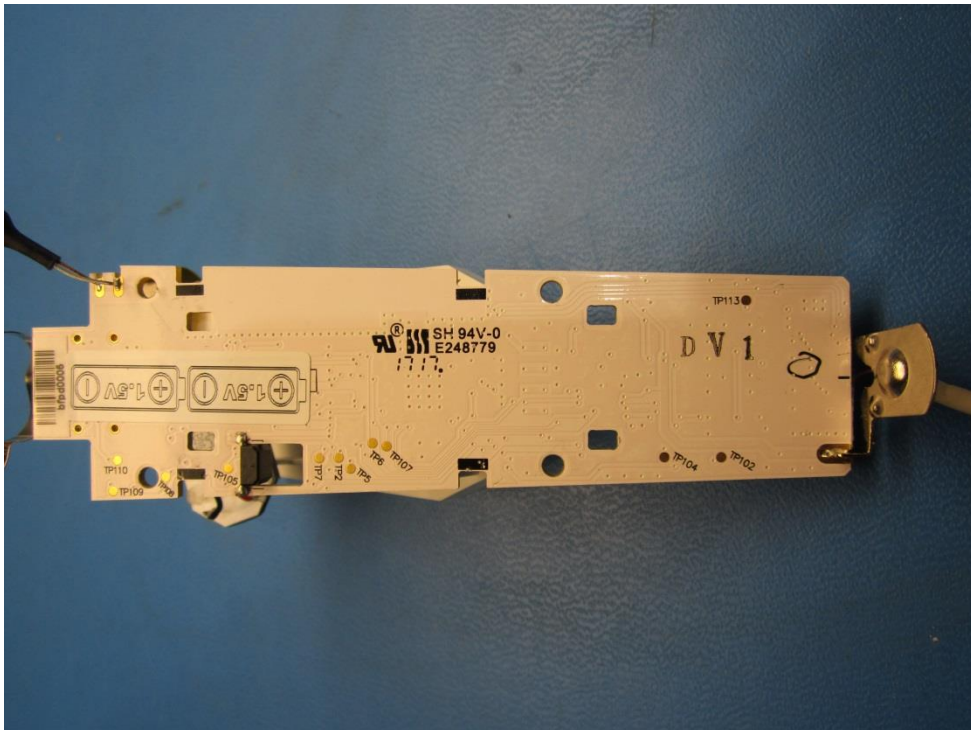
Bluetooth LE Kitchen Thermometer Front Internal View, Thermocouple Shield Removed

FCC ID: SZ9TMBFP150  
IC : 10940A-TMBFP150



Bluetooth LE Kitchen Thermometer, Internal End View (Battery Compartment)

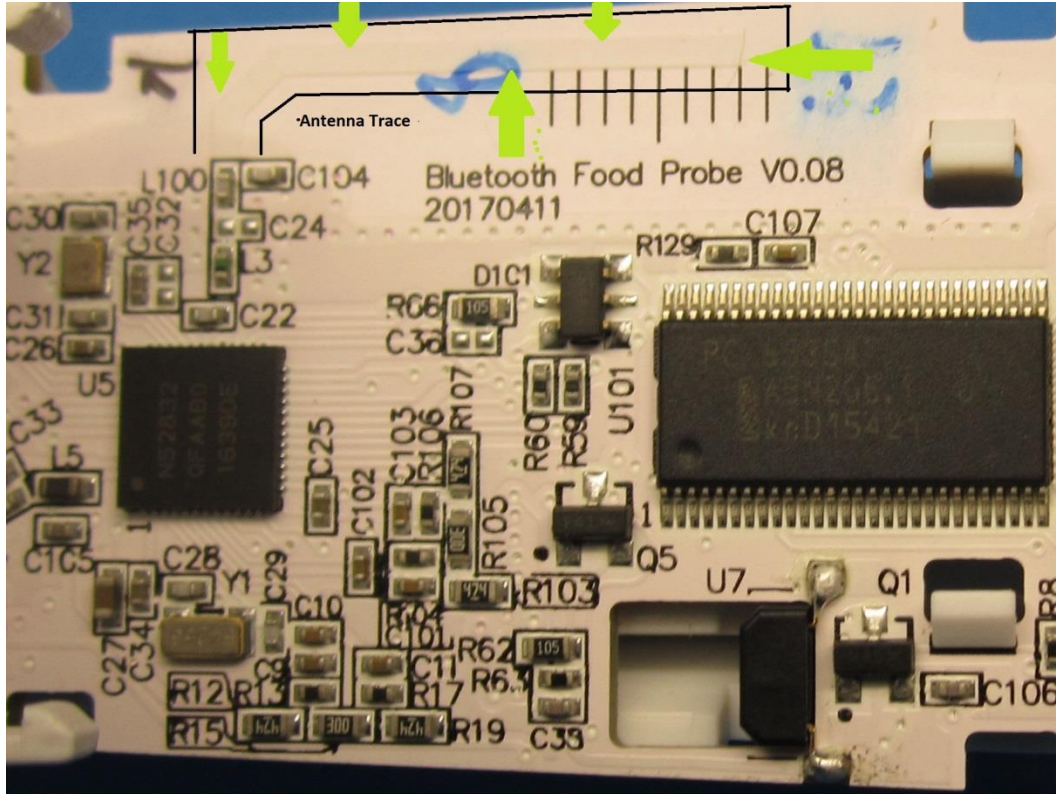
LCD Display connected, RGB LED Panel Raised



Bluetooth LE Kitchen Thermometer, Internal Bottom View



FCC ID: SZ9TMBFP150  
IC : 10940A-TMBFP150



Bluetooth LE Kitchen Thermometer, PCB Etched Antenna Trace (\*Note that entire board has conformal coating over traces and unused mounting holes)