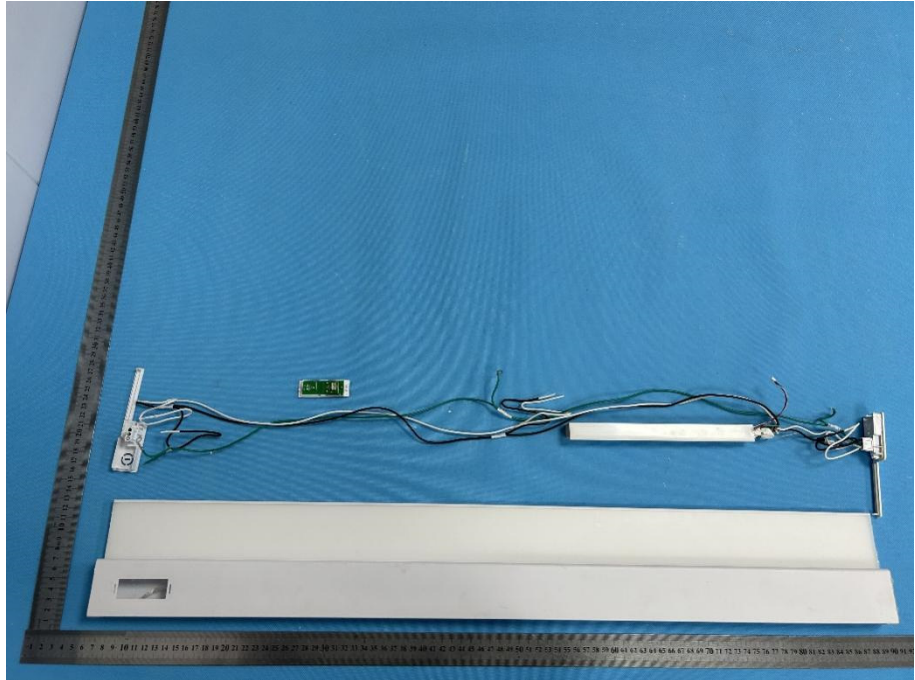
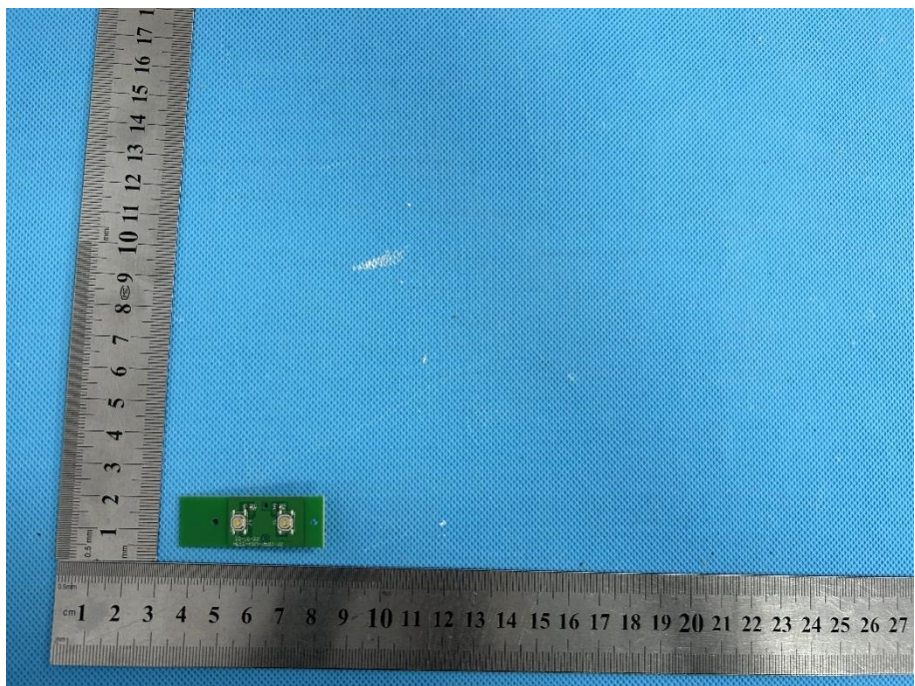


### EXHIBIT 3 - EUT INTERNAL PHOTOGRAPHS

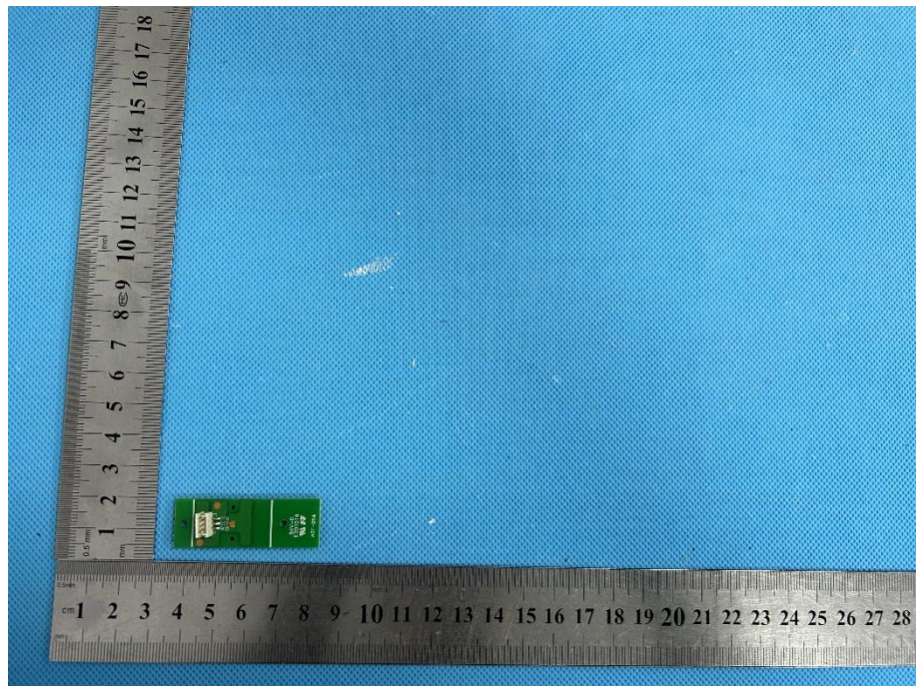
**EUT Housing and Board View 1**



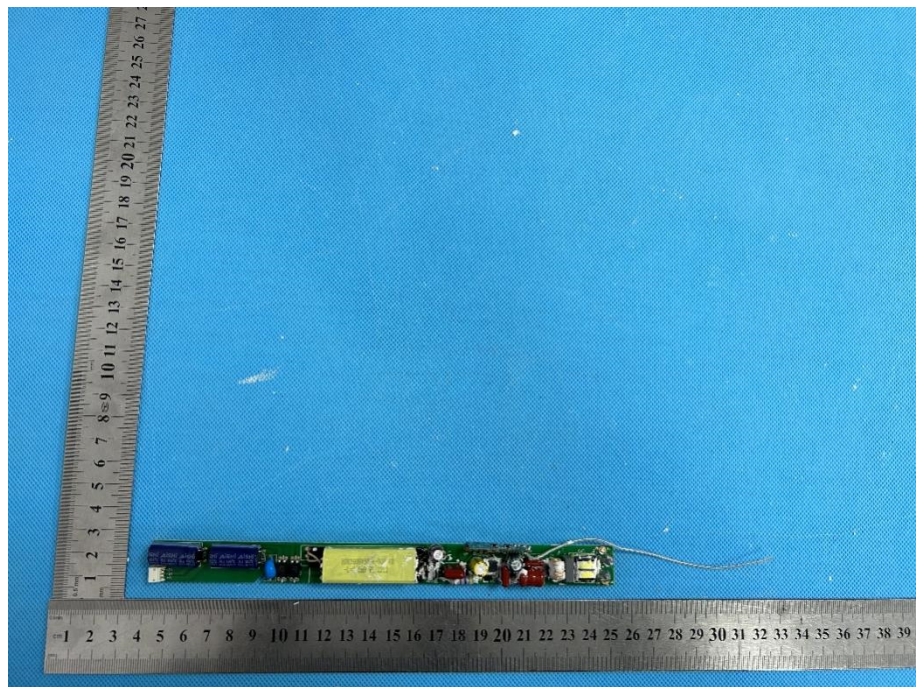
**Solder Board-Component View 1**



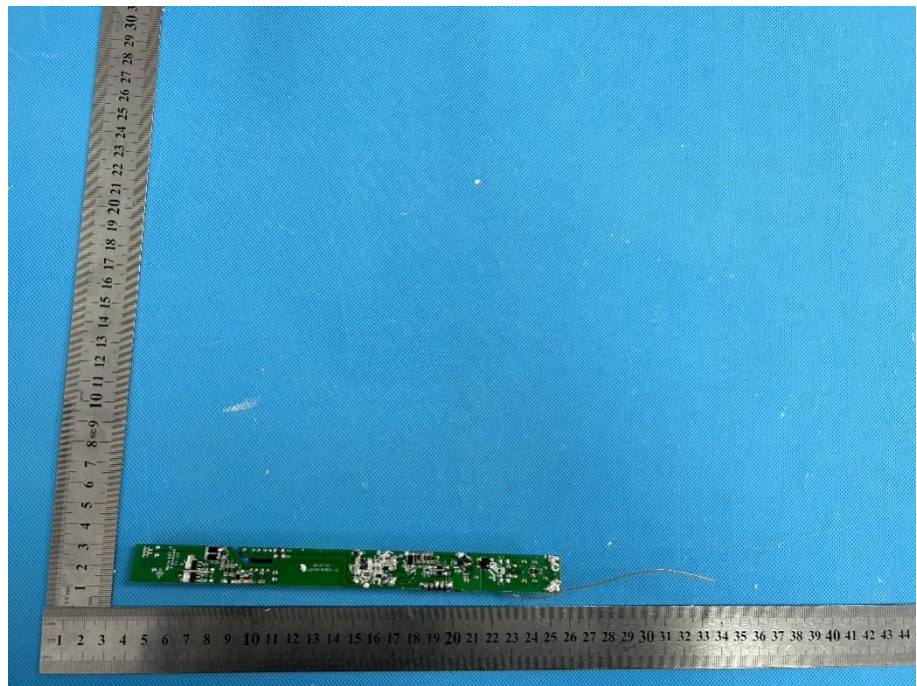
**Solder  
Board-Component  
View 2**



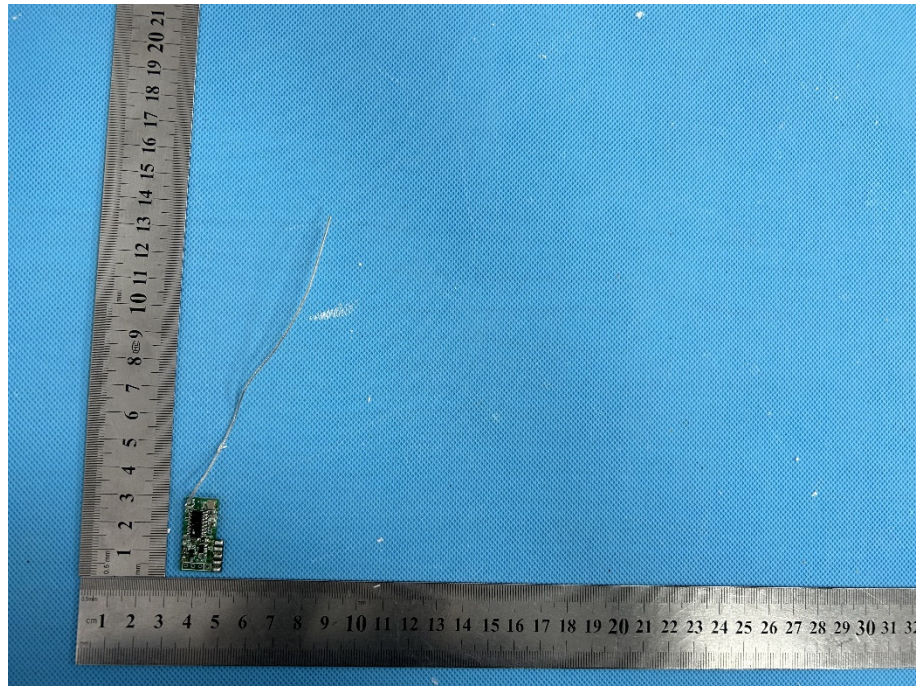
**Solder  
Board-Component  
View 3**

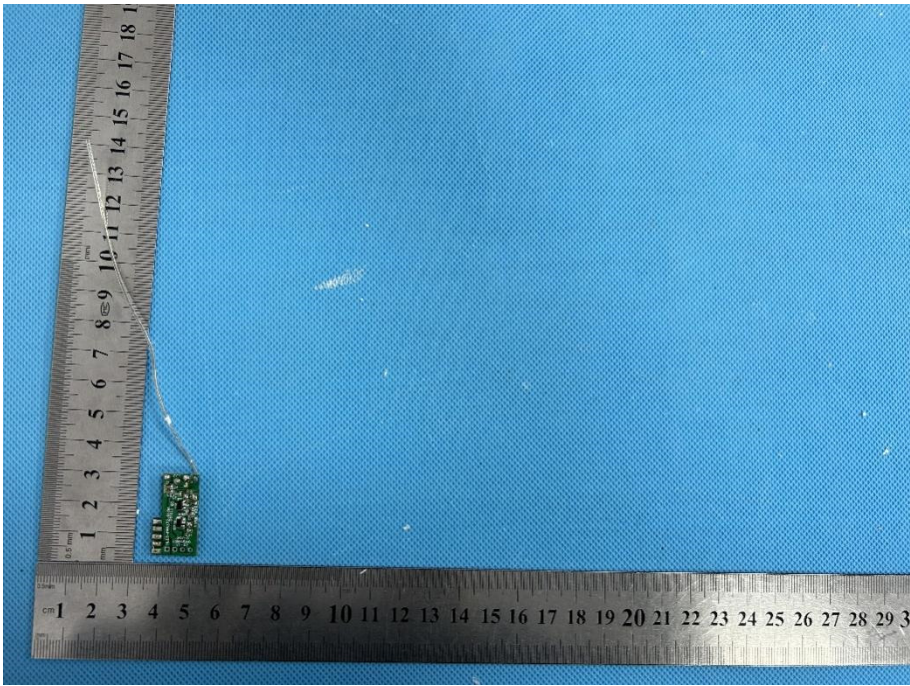
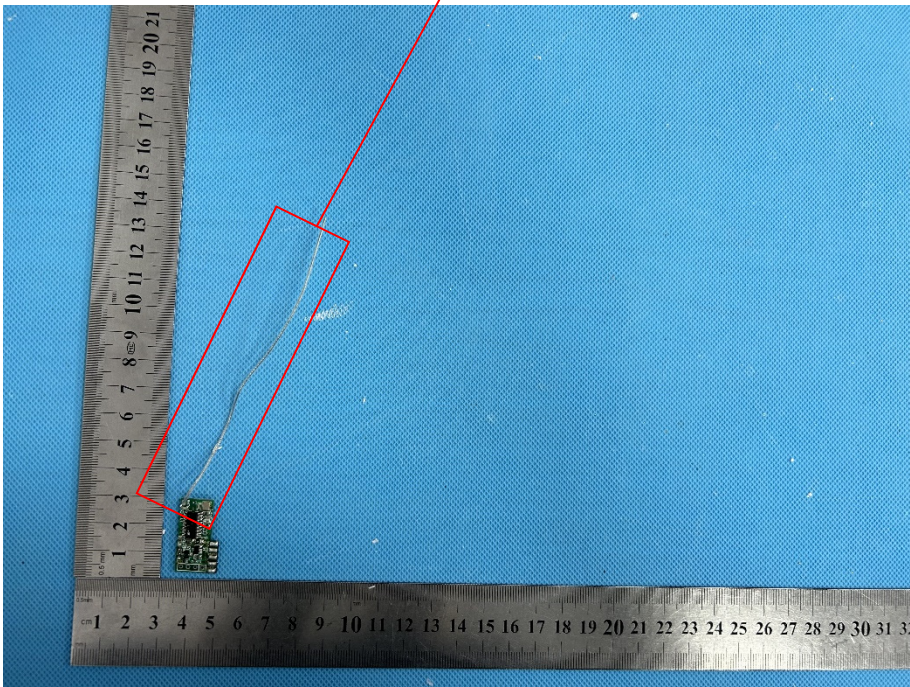


**Solder  
Board-Component  
View 4**



**Solder  
Board-Component  
View 5**



<p><b>Solder Board-Component View 6</b></p>	 <p>A photograph showing a small green PCB component with a thin antenna wire attached. The component is placed on a blue textured surface. Two metal rulers are used for scale: one vertical ruler on the left and one horizontal ruler at the bottom. The vertical ruler shows the component is approximately 2.5 cm high. The horizontal ruler shows the component is approximately 1.5 cm wide.</p>
<p><b>Antenna View</b></p>	 <p>A photograph showing the same PCB component and antenna wire as in the previous view. A red rectangular box highlights the antenna wire. A red line extends from the top-right corner of this box to a red-bordered text box containing the text "2.4GHz Antenna". The rulers and blue background are also visible.</p>