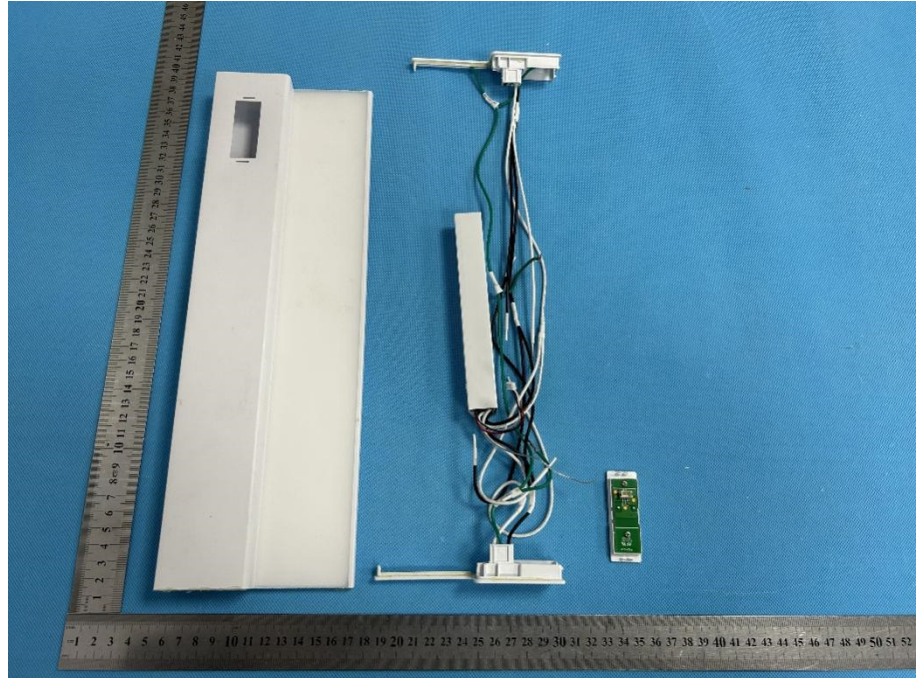


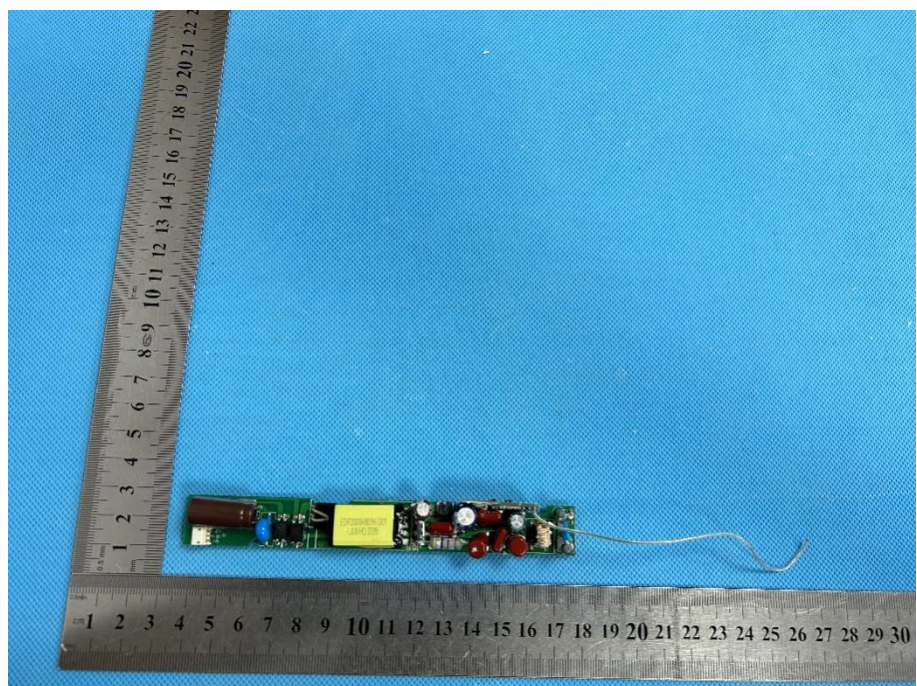
EXHIBIT 3 - EUT INTERNAL PHOTOGRAPHS

UCL18FP/5CCTCAG3

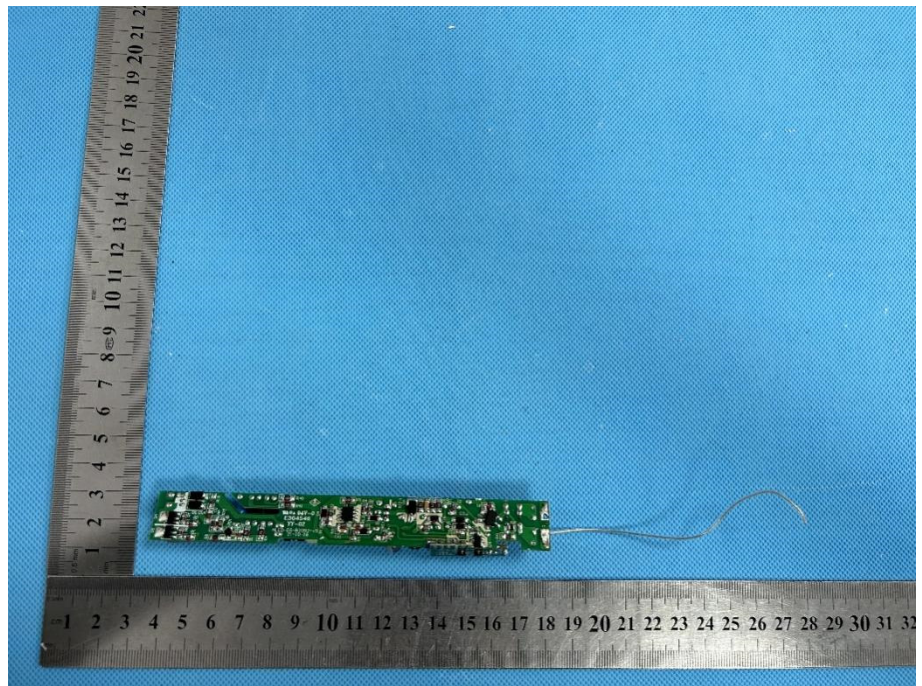
EUT Housing and Board View 1



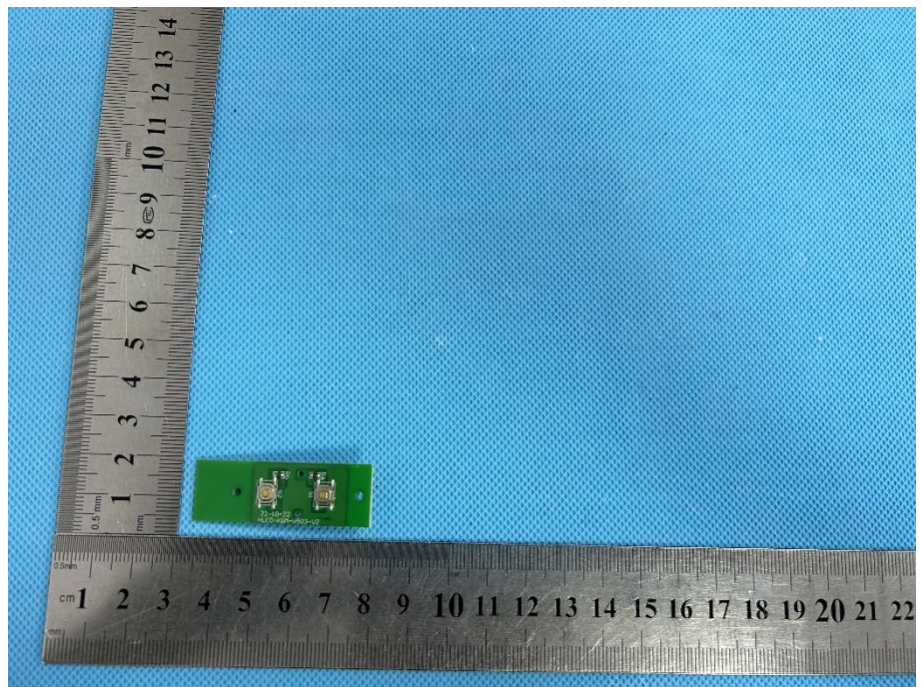
Solder Board-Component View 1

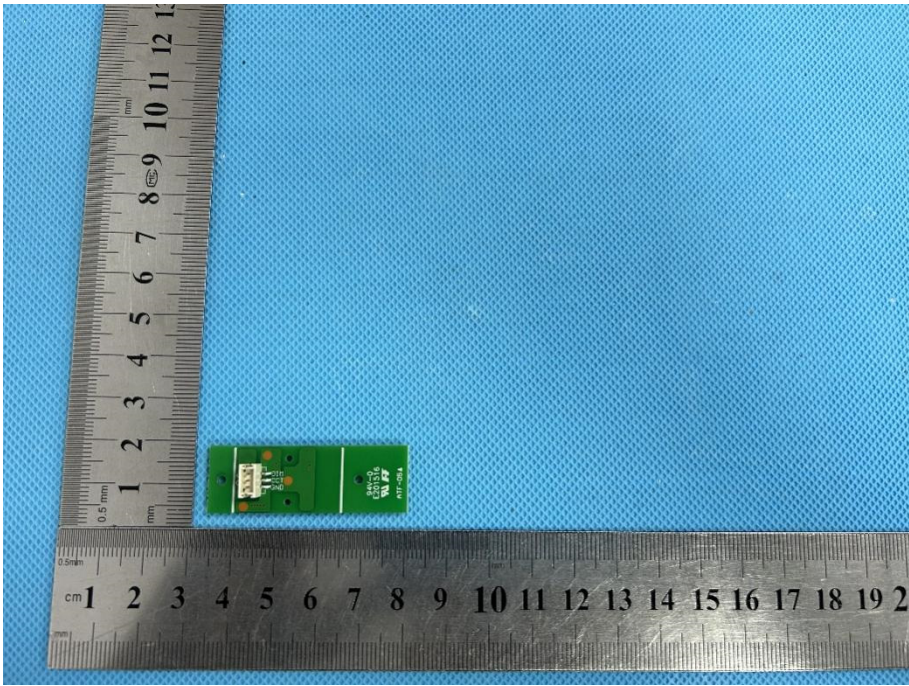
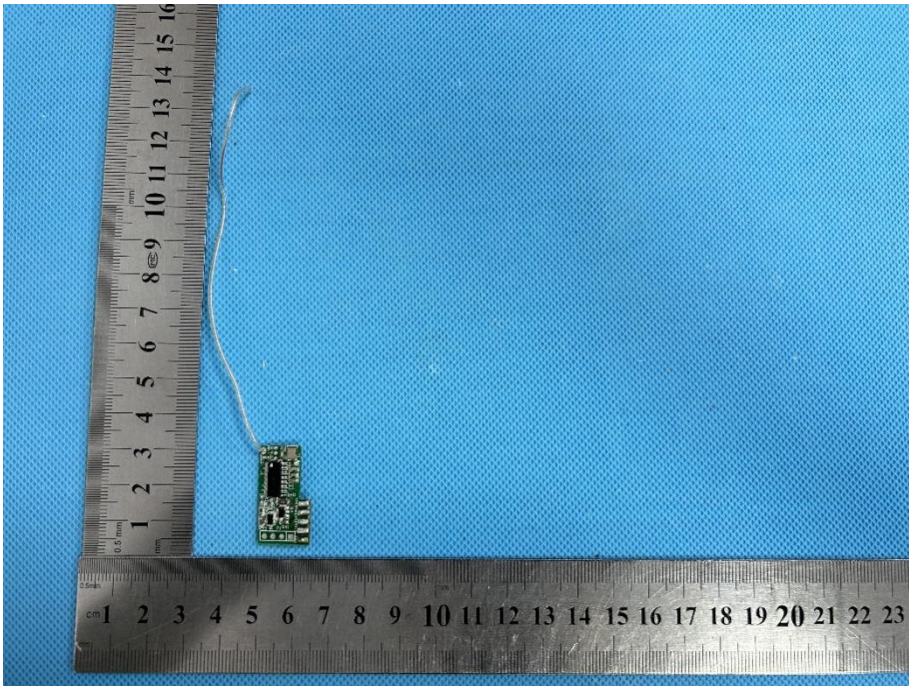


**Solder
Board-Component
View 2**

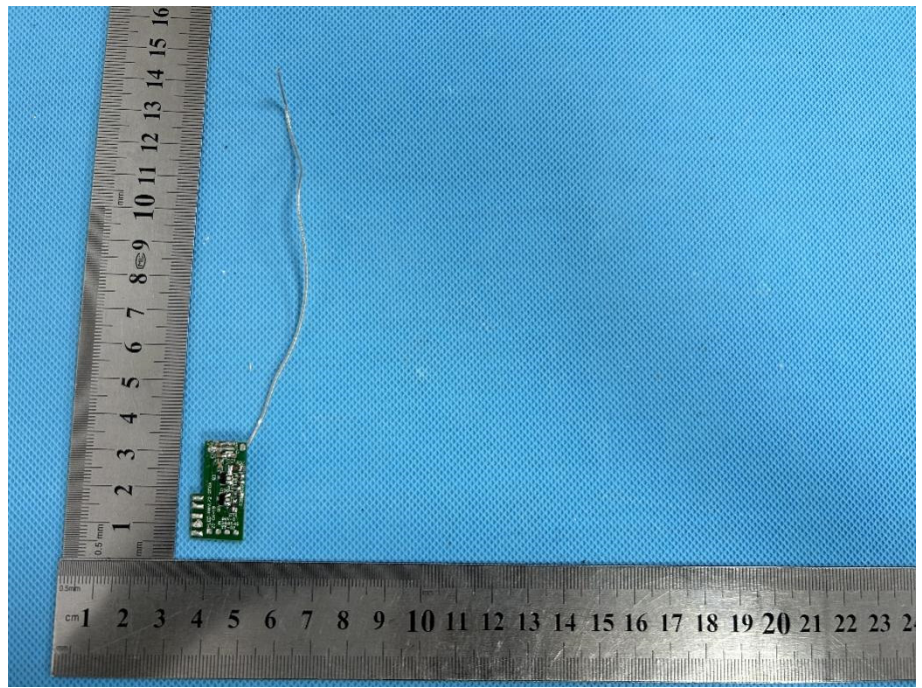


**Solder
Board-Component
View 3**



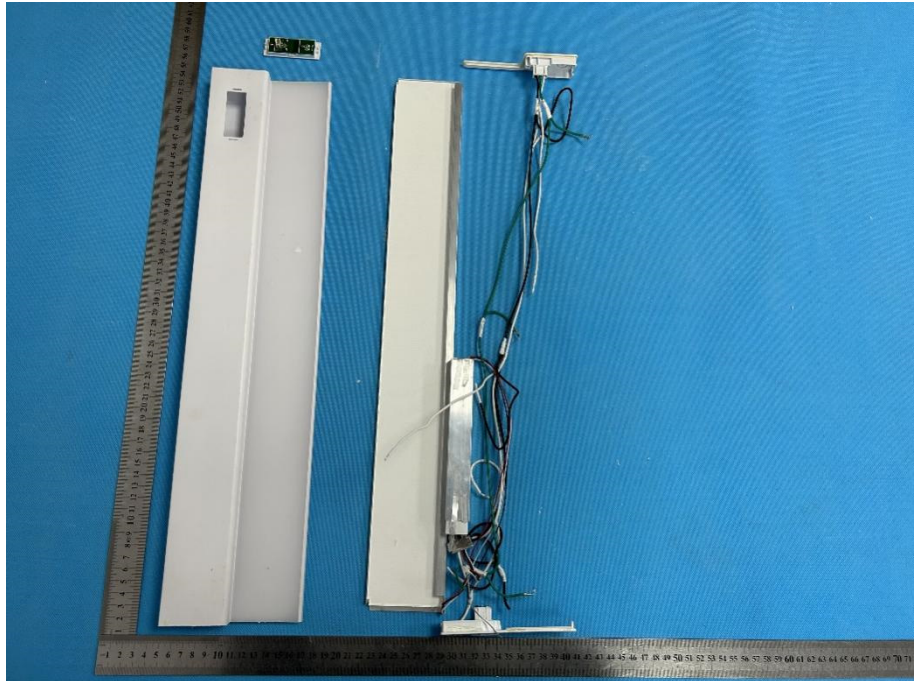
<p>Solder Board-Component View 4</p>	 A photograph of a small green printed circuit board (PCB) component. The component is rectangular and has a white connector on the left side. It is placed on a blue textured surface. Two metal rulers are used for scale: one vertical ruler on the left showing millimeter markings from 1 to 12, and one horizontal ruler at the bottom showing centimeter markings from 1 to 20. The component is positioned between the 4 and 6 cm marks on the horizontal ruler.
<p>Solder Board-Component View 5</p>	 A photograph of the same green PCB component from a different angle. The component is oriented vertically. A thin, light-colored wire is attached to the top of the component. Two metal rulers are used for scale: one vertical ruler on the left showing millimeter markings from 1 to 16, and one horizontal ruler at the bottom showing centimeter markings from 1 to 23. The component is positioned between the 4 and 6 cm marks on the horizontal ruler.

**Solder
Board-Component
View 6**

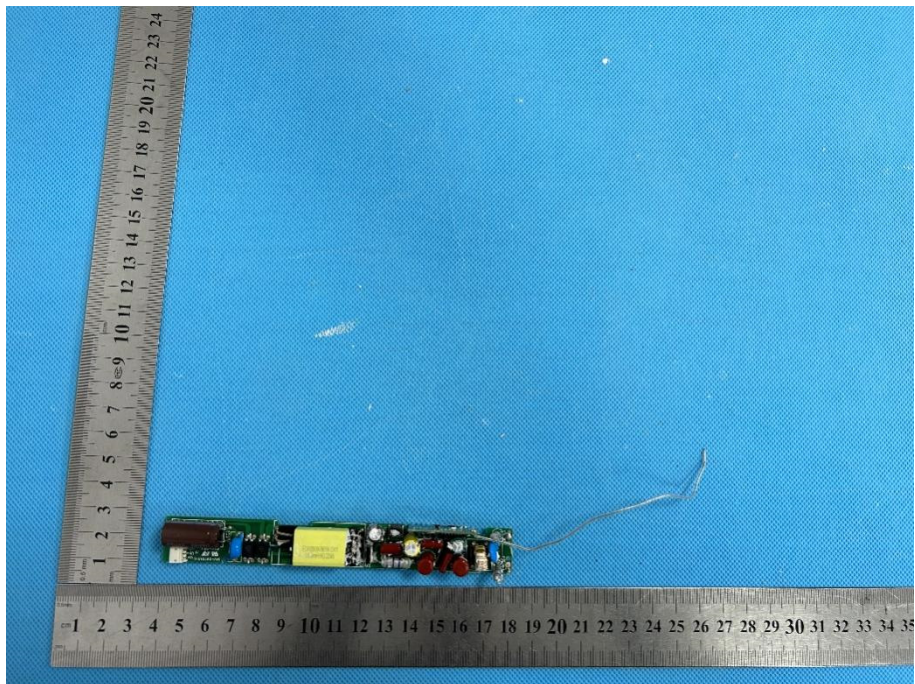


UCL24FP/5CCTCAG3

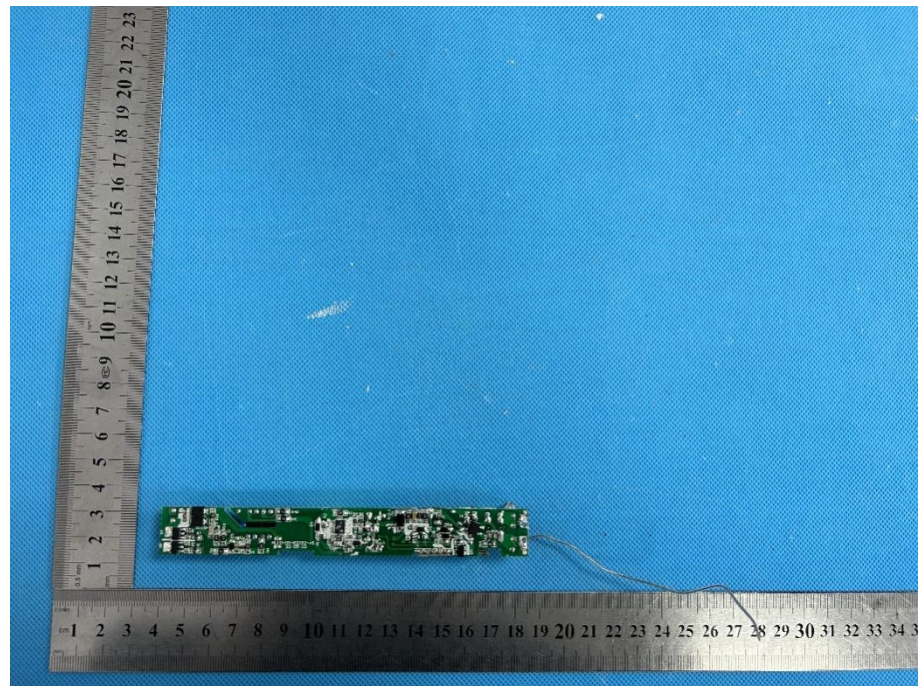
EUT Housing and Board View 1



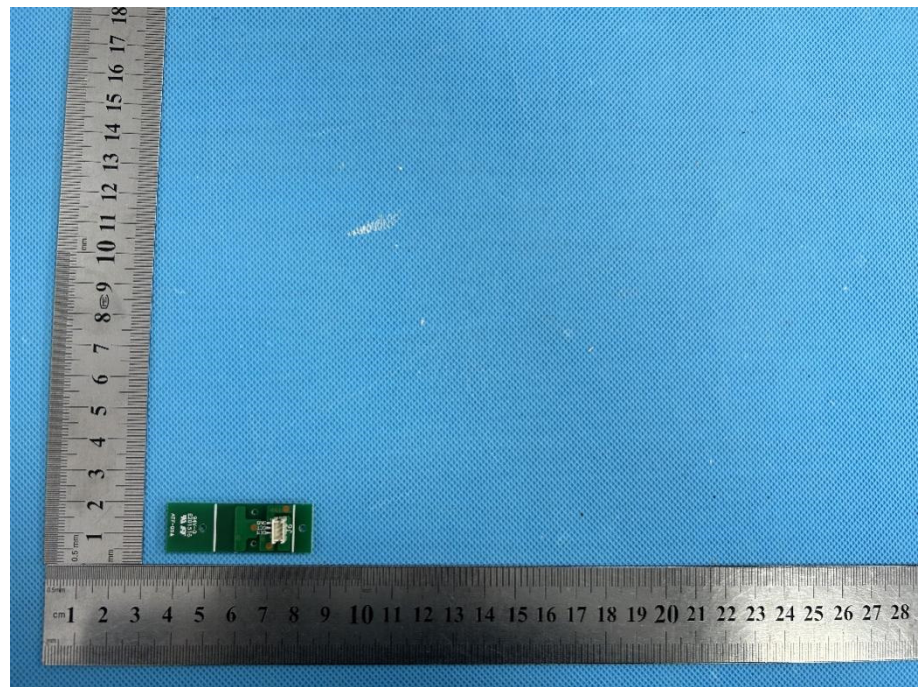
Solder Board-Component View 1



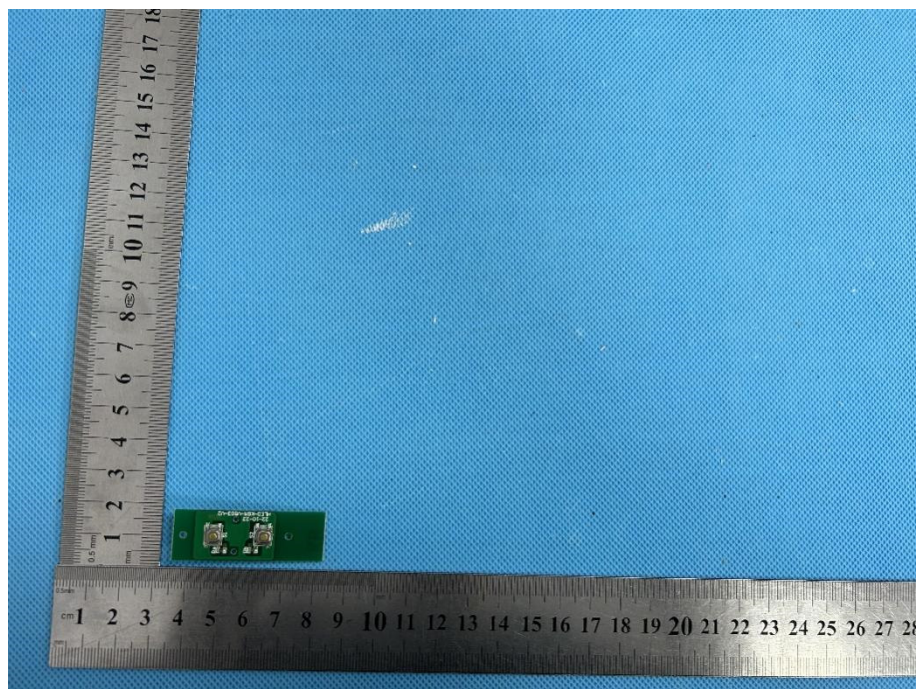
**Solder
Board-Component
View 2**



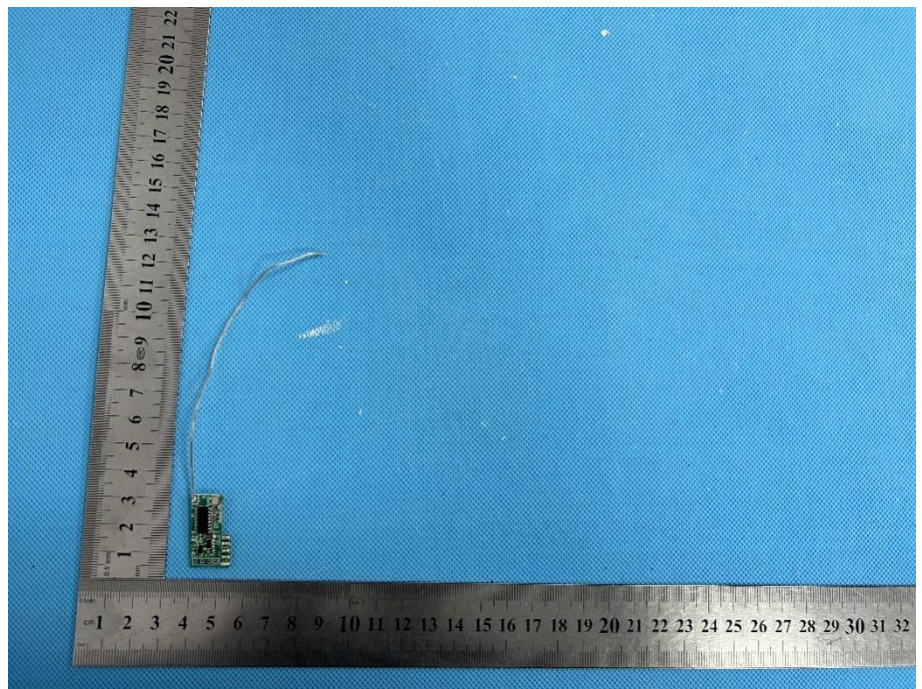
**Solder
Board-Component
View 3**

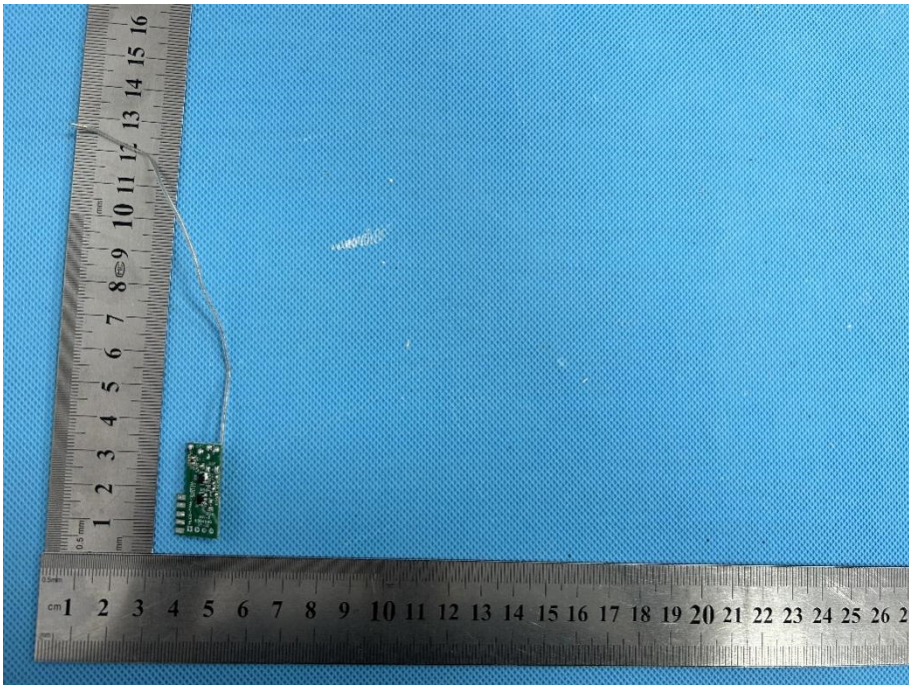
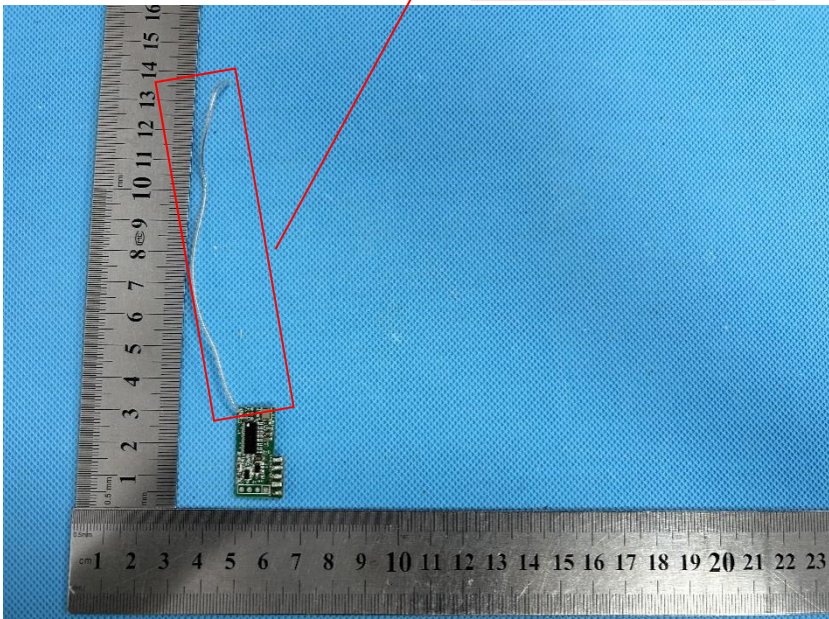


**Solder
Board-Component
View 4**



**Solder
Board-Component
View 5**



<p>Solder Board-Component View 6</p>	 <p>A photograph showing a small green printed circuit board (PCB) component with a thin wire attached. The component is placed on a blue textured surface. A metal ruler is positioned vertically to the left of the component, showing measurements in centimeters and millimeters. The ruler is also placed horizontally below the component, showing measurements in centimeters. The component is located approximately between the 4.5 cm and 5.5 cm marks on the vertical ruler.</p>
<p>Antenna View</p>	 <p>A photograph showing the same green PCB component and wire as in the previous view. A red rectangular box highlights the wire and its connection to the component. A red line points from this box to a label that reads "2.4GHz Antenna". The component and wire are placed on a blue textured surface. A metal ruler is positioned vertically to the left and horizontally below the component, showing measurements in centimeters and millimeters. The component is located approximately between the 4.5 cm and 5.5 cm marks on the vertical ruler.</p>