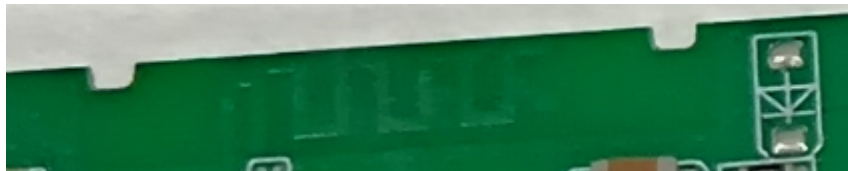
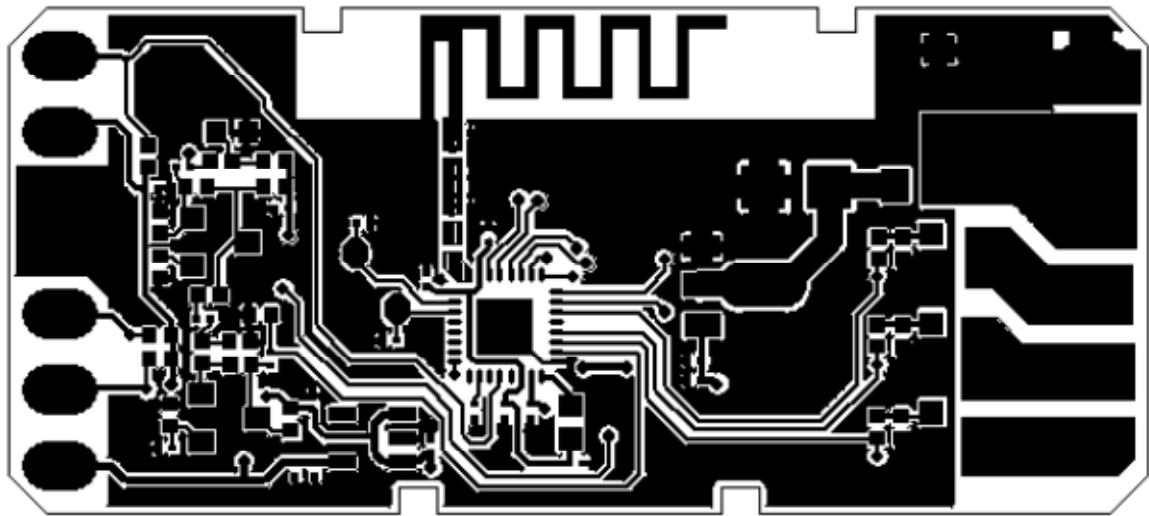
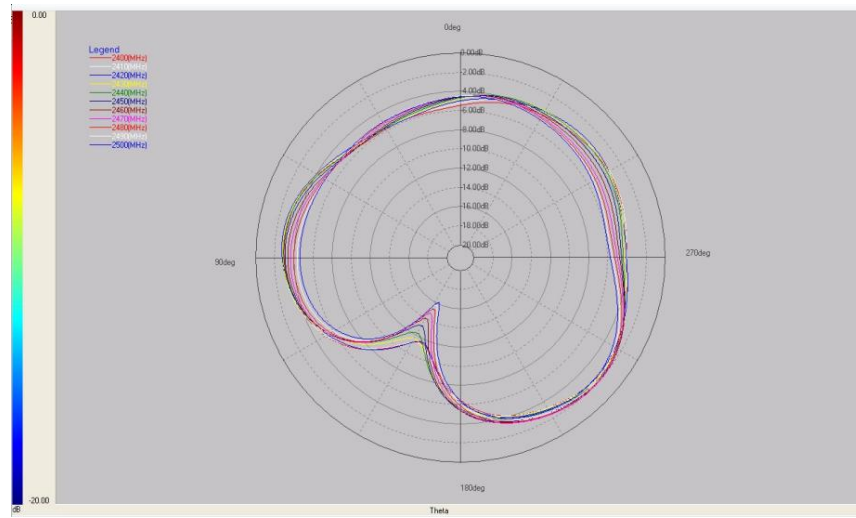


1. Antenna Specification

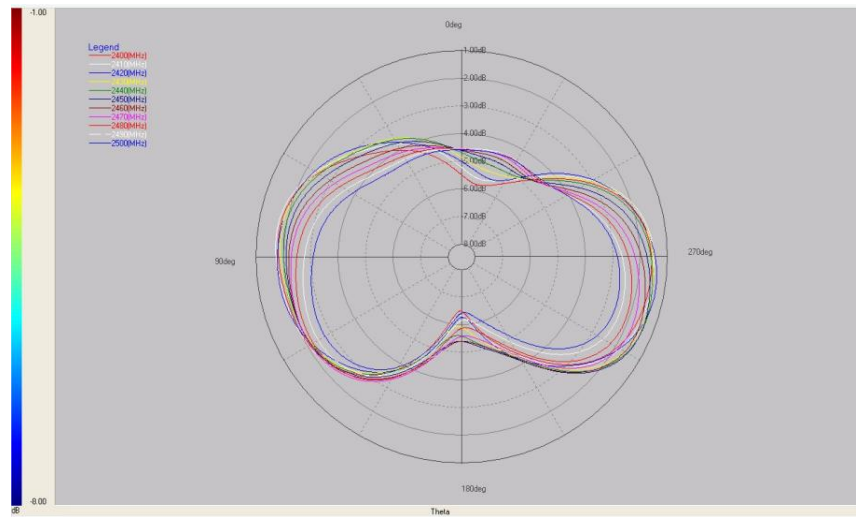
| Item | Specification |
|-------------------------|---|
| Working Frequency Range | 2.4-2.5GHz |
| Max PK Gain | 2400MHz:-1.3dBi 2450MHz:-1.3dBi 2500MHz:-1.3dBi |
| VSWR | 2.0 Max |
| Polarization | Linear |
| Type | PCB |
| Impedance | 50 Ω |



Phi=0



Phi=90



Theta=90

