

## Quick Guide for App Setup

### Getting Started:

- 1 Download the Feit Electric app on your smart device.



Feit Electric app



Only supports  
2.4GHz Wi-Fi  
networks

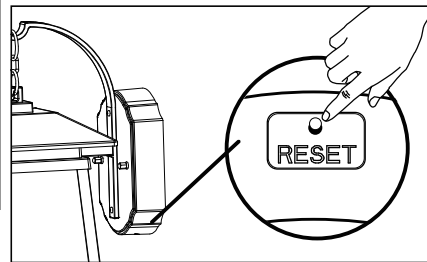


**NOTE:** Be sure to connect to a 2.4 Ghz network that covers your installation location.

- 2 After hardwiring to power, turn on your Smart Coach Lantern. The Smart Coach Lantern must be blinking rapidly to pair. If not already blinking, push the reset button at the bottom of the back plate three times. The Coach Lantern will blink rapidly to indicate a successful reset and will initiate pairing mode.



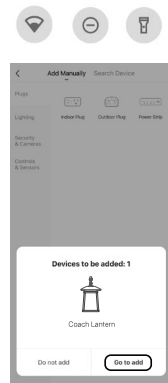
**NOTE:** An alternative method to enabling pairing mode with the fixture is by flipping the wall switch On and Off three times.



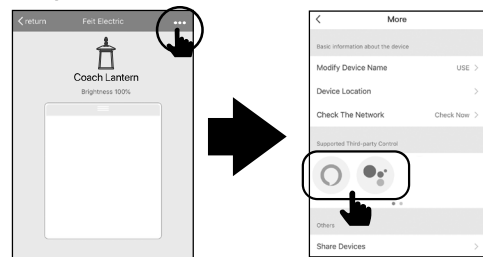
- 3 Open the Feit Electric app to complete the set up.

Tap **Add Device** or the **+** sign. The device name(s) will pop up on the Feit app. Tap on **Go to add**, then select the device to add.

You will be prompted to enter your Wi-Fi network name and password.



- 4 (Optional) Connect to Google Assistant or Alexa using the in-app guide.



Tap **...** menu icon

Choose **Alexa** or **Google Assistant**

### Operation without connecting Smart Wi-Fi

If you power on and operate the Coach Lantern without connecting to Wi-Fi it will blink rapidly for 3 minutes then turn on and stay a Warm White light.

Works with a light switch.

#### LIMITED WARRANTY

This product is warranted to be free from defects in workmanship and materials for up to 3 years from date of purchase. If the product fails within the warranty period, please contact Feit Electric at [feit.com/help](http://feit.com/help) for help. REPLACEMENT OR REFUND IS YOUR SOLE REMEDY. EXCEPT TO THE EXTENT PROHIBITED BY APPLICABLE LAW, ANY IMPLIED WARRANTIES ARE LIMITED IN DURATION TO THE DURATION OF THIS WARRANTY. LIABILITY FOR INCIDENTAL OR CONSEQUENTIAL DAMAGES IS HEREBY EXPRESSLY EXCLUDED. Some states and provinces do not allow the exclusion of incidental or consequential damages, so the above limitation or exclusion may not apply to you. This warranty gives you specific legal rights, and you may also have other rights which vary from state to state or province to province.



For 24/7 customer support, visit [feit.com/help](http://feit.com/help)

#### CAUTION

**WARNING:** Risk of fire. Use only on 120 volt 60Hz circuits. Before installing your lighting fixture, thoroughly review enclosed installation manual. If you do not have sufficient electrical wiring experience, please refer to a do-it-yourself wiring handbook or have your fixture installed by a qualified licensed electrician. Do not use with standard dimmers. All electrical connections must be in accordance with Local and National Electrical Code (NEC) Standards. CONSULT A QUALIFIED ELECTRICIAN TO ENSURE CORRECT BRANCH CIRCUIT CONDUCTOR.

#### Supplier's Declaration of Conformity:

47 CFR § 2.1077 Compliance Information

#### Responsible Party:

Feit Electric Company  
4901 Gregg Road;  
Pico Rivera, CA 90660, USA  
562-463-2852

#### Unique Identifier:

LAN13/RGBW, ITM. / ART. 1613106

This device complies with part 15 of the FCC Rules. Operation is subject to the following two conditions: (1) This device may not cause harmful interference, and (2) this device must accept any interference received, including interference that may cause undesired operation. Note: This equipment has been tested and found to comply with the limits for a Class B digital device, pursuant to part 15 of the FCC Rules. These limits are designed to provide reasonable protection against harmful interference in a residential installation. This equipment generates, uses and can radiate radio frequency energy and, if not installed and used in accordance with the instructions, may cause harmful interference to radio communications. However, there is no guarantee that interference will not occur in a particular installation. If this equipment does cause harmful interference to radio or television reception, which can be determined by turning the equipment off and on, the user is encouraged to try to correct the interference by one or more of the following measures: Reorient or relocate the receiving antenna. Increase the separation between the equipment and receiver. Connect the equipment into an outlet on a circuit different from that to which the receiver is connected. Consult the dealer or an experienced radio/TV technician for help. Any changes or modifications not expressly approved by the manufacturer could void the user's authority to operate the equipment. Feit Electric Company, 4901 Gregg Road, Pico Rivera, CA 90660. [www.feit.com](http://www.feit.com). CAN ICES-005 (B)

## Need Help?

Thank you for your purchase.

Questions, comments or feedback?

We'd love to hear from you.

Visit [feit.com/help](http://feit.com/help) for support or connect with us:



@FeitElectric



@FeitElectricInc



feitelectriclighting



## MODEL: LAN13/RGBW

ITM. / ART. 1613106

# 13 INCH SMART COACH LANTERN

SELECTABLE WHITE + MILLIONS OF COLORS

## IMPORTANT, RETAIN FOR FUTURE REFERENCE: READ CAREFULLY

#### RF exposure statement

This equipment complies with the FCC RF radiation exposure limits set forth for an uncontrolled environment. This equipment should be installed and operated with a minimum distance of 20cm between the radiator and any part of your body. This equipment meets the exemption from the routine evaluation limits in section 2.5 of RSS-102. It should be installed and operated with a minimum distance of 20cm between the radiator and any part of your body.

Cet équipement est conforme à l'exemption des limites d'évaluation habituelle de la section 2.5 de la norme RSS-102. Il doit être installé et utilisé à une distance minimale de 20 cm entre le radiateur et toute partie de votre corps.

#### IC WARNING

This device contains licence-exempt transmitter(s) that comply with Innovation, Science and Economic Development Canada's licence-exempt RSS(s). Operation is subject to the following two conditions:

- (1) This device may not cause interference.
- (2) This device must accept any interference, including interference that may cause undesired operation of the device.

L'émetteur/récepteur exempt de licence contenu dans le présent appareil est conforme aux CNR d'Innovation, Sciences et Développement économique Canada applicables aux appareils radio exempts de licence. L'exploitation est autorisée aux deux conditions suivantes:

1. L'appareil ne doit pas produire de brouillage;
2. L'appareil doit accepter tout brouillage radioélectrique subi, même si le brouillage est susceptible d'en compromettre le fonctionnement.



Only supports  
2.4GHz Wi-Fi  
Networks



Works with  
Feit Electric app



SCAN ME  
for a "HOW TO" video





## WARNING:

This product may represent a possible shock or fire hazard if improperly installed or attached in any way. Product should be installed in accordance with the owner's manual, current electrical codes and/or the current National Electric Code (NEC).

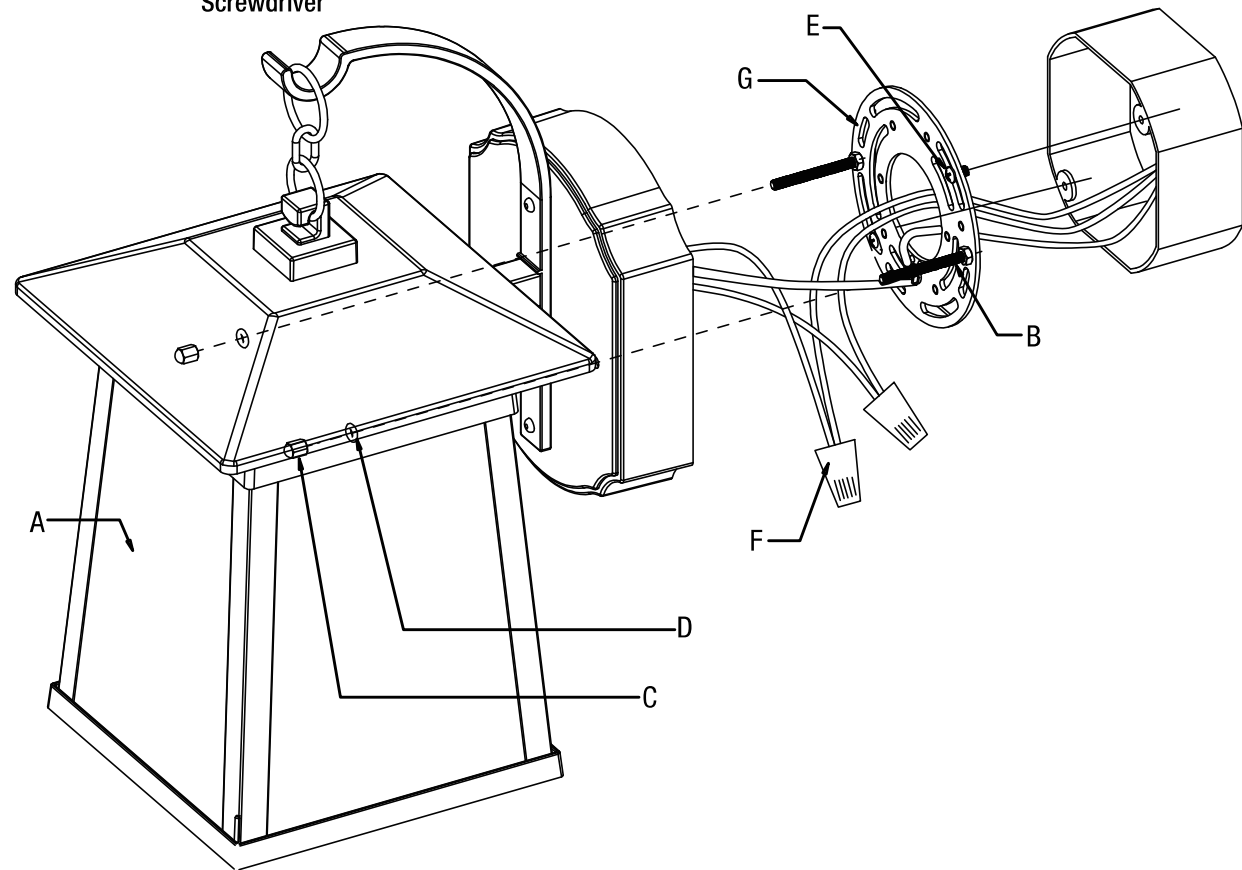
**RISK OF ELECTRIC SHOCK:**  
TURN OFF THE MAIN POWER AT THE  
CIRCUIT BREAKER BEFORE INSTALLING.

## PRE-ASSEMBLY

### TOOLS REQUIRED (Not included)

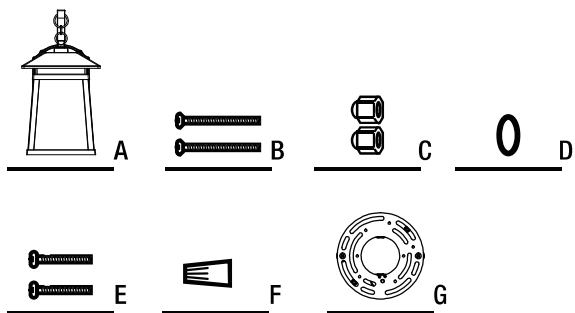


Phillips  
Screwdriver



### HARDWARE INCLUDED

NOTE: Hardware not shown to actual size.



Part	Description	Quantity
A	13 in. Lantern	1
B	Fixture Mounting Screws	2
C	Decorative Nuts	2
D	Rubber Washers	2
E	Junction Box Mounting Screws	2
F	Wire Nuts	3
G	Mounting Plate	1

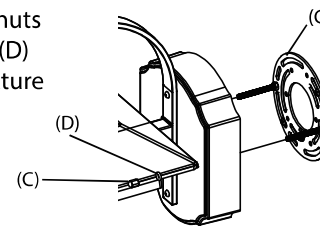
## INSTALLATION INSTRUCTIONS

### 1 TURN POWER OFF

Turn power off at circuit breaker or remove the correct fuse.

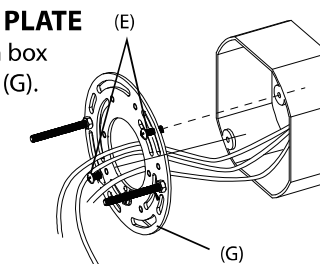
### 2 REMOVE THE MOUNTING PLATE

Unscrew the decorative nuts (C), remove the washers (D) and save them for the fixture mounting. Remove the mounting plate (G).

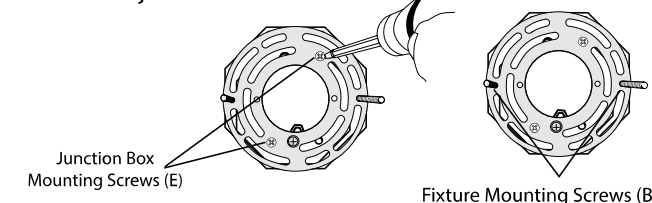


### 3 INSTALL MOUNTING PLATE

Feed wires from junction box through mounting plate (G).



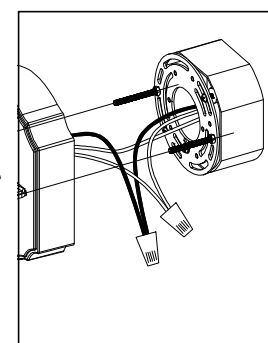
Secure the mounting plate to the junction box by inserting the two junction box mounting screws (E) through the slots in the mounting plate that best align to the junction box.



NOTE: Make sure fixture mounting screws (B) are level.

### 4 CONNECT WIRES

Connect the green/yellow fixture wire and the green or bare copper house wire to the the green GND (Ground) screw on the Mounting Plate (G). Use the wire nuts (F) provided to connect the white fixture wire to the neutral supply wire and connect the black fixture wire to the live wire.

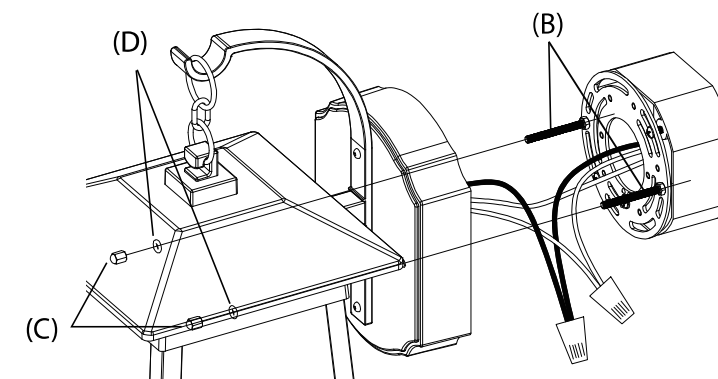


### 5 MOUNT FIXTURE

Insert fixture mounting screws (B) through holes on the fixture back plate. Add rubber washers (D) and secure fixture to mounting plate by tightening decorative nuts (C).

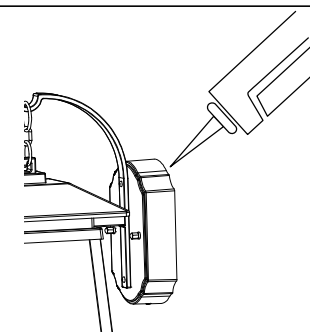
NOTE: The Fixture Mounting Screws (B) should extend about 1/4 inch from the fixture body. Adjust the screw length in the bracket as necessary.

NOTE: Hand tighten decorative nuts (C). Do not use any tools as over tightening may occur causing damage to back plate.



### 6 SEAL THE FIXTURE

Caulk between the fixture back plate and the wall surface to prevent water penetration. Use a silicone sealant (not included).



### 7 TURN POWER ON

Turn power on at circuit breaker or replace the fuse.

## SAVE THESE INSTRUCTIONS

### IMPORTANT WIRING INFORMATION

Always follow the recommended wire strip lengths and wiring combinations when connecting wires.

Hold stripped ends next to each other and align frayed strands (do not twist wires).

Push wires firmly into wire nut. Using your fingers, twist wire nut clockwise until tight. Check for tightness by pulling wires.

