

APPENDIX D

Test Procedure

1) Getting Started

- i. Power-up the laptop.
- ii. Connect DM port (on Module) to COM port (on PC), And Confirm Power.
- iii. Execute MaxPwrOnV1.1 Tool.
- iv. Set Port(1 port) and Baud rate(115200).
- v. Connect spectrum analyzer to Antenna of Module.
- vi. Select CDMA2000 1x or Zero IF according to Adaptive phone.
- vii. Input Measurement channel.
- viii. Click the Max power on button
- ix. Confirm CDMA waveform at Measurement channel

2) How to Power On/Off the Transmit Power

- i. To turn on the transmit power, click the 'Max Power On' button.
- ii. To turn off the transmit power, click the 'Tx Off' button.

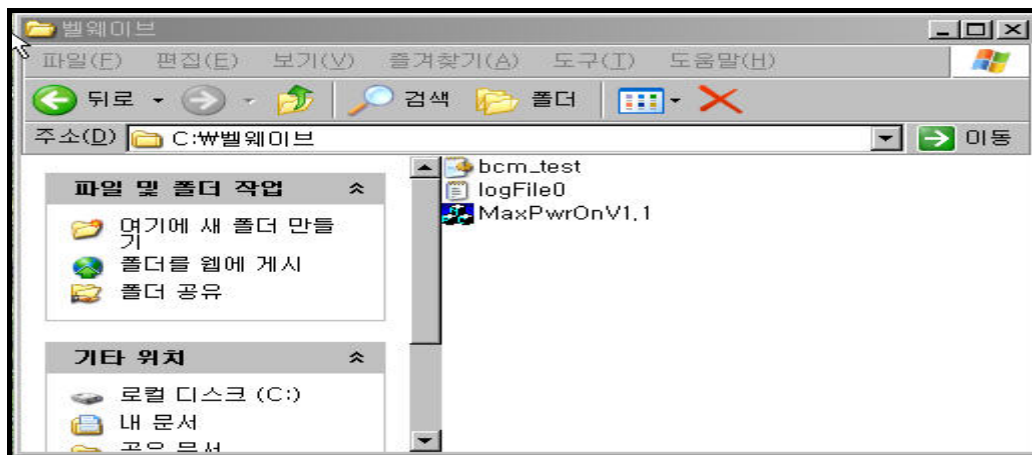
3) How to change Channels

To change the Tx channels (1013, 363,777), Put Tx channel number into the blank below of Test channel.

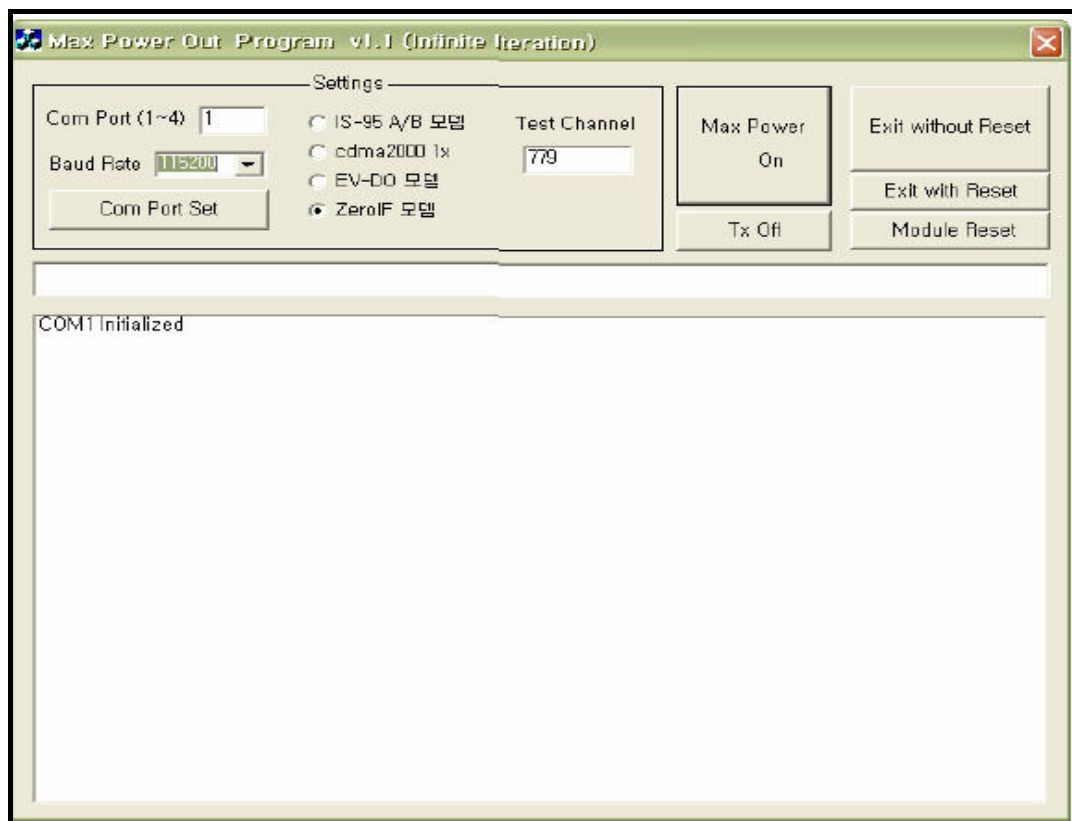
4) How to change Transmit Power Level

In the test procedure, Tx power level was set for 24.3dBm

View of Cm Test Program



View of 'MaxPwrOnV1.1'



Main view of Program